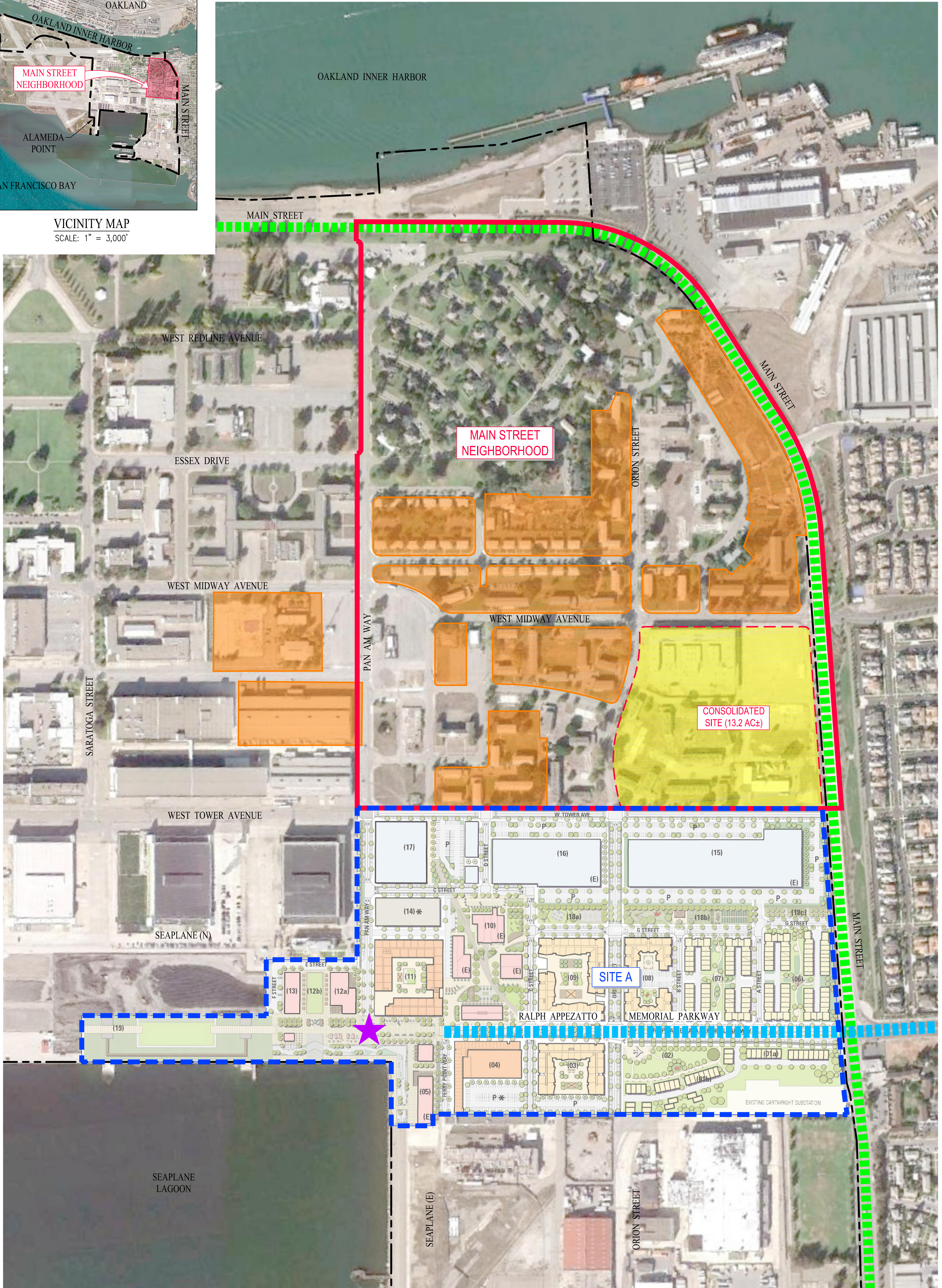




VICINITY MAP
SCALE: 1" = 3,000'

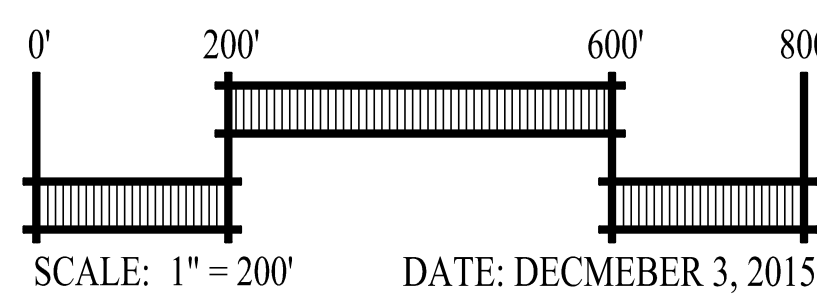
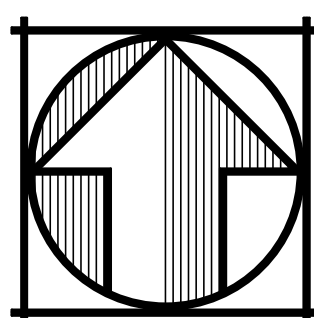


LEGEND

- MAIN STREET NEIGHBORHOOD BOUNDARY
- SITE A BOUNDARY
- EXISTING LEASEHOLD (ALAMEDA POINT COLLABORATIVE, INC.)
- PROPOSED CONSOLIDATED SITE
- TRANSIT CORRIDOR
- EXISTING INFRASTRUCTURE CORRIDOR
- RETAIL AMENITIES

ALAMEDA POINT MAIN STREET NEIGHBORHOOD AND SITE A MAIN STREET NEIGHBORHOOD

CITY OF ALAMEDA ALAMEDA COUNTY CALIFORNIA



cbg Carlson, Barbee & Gibson, Inc.
CIVIL ENGINEERS • SURVEYORS • PLANNERS

2633 CAMINO RAMON, SUITE 350
SAN RAMON, CALIFORNIA 94583

(925) 866-0322
www.cbang.com