

# Oakland Alameda Access Project

Providing Access and Connections

February 2024

Exhibit 1 6-D  
Transportation Commission  
8-28-24

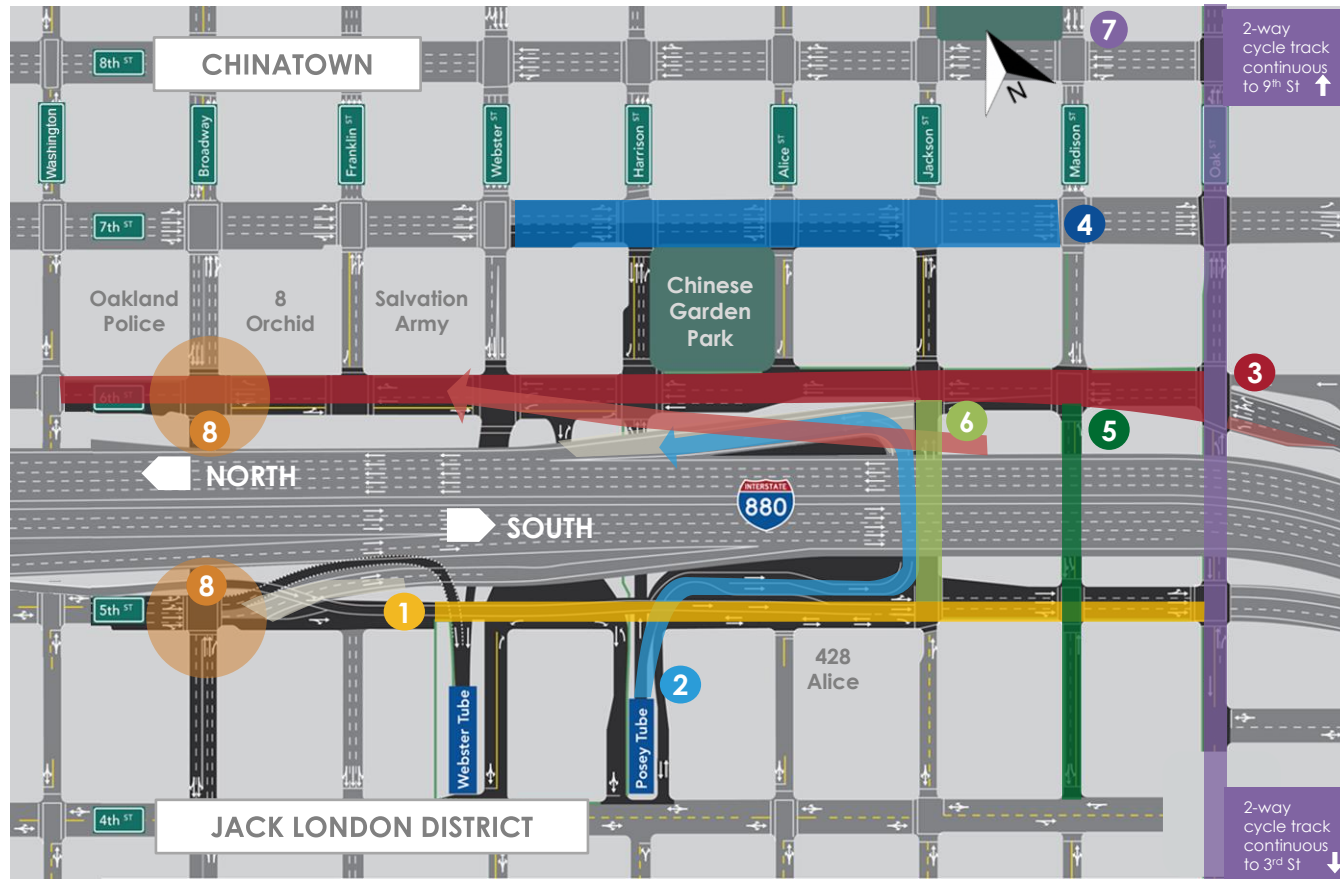


# Project Purpose and Need

- Improve multimodal safety and reduce conflicts between regional and local traffic
- Enhance bicycle and pedestrian accessibility and connectivity within the project study area
- Improve mobility and accessibility for travelers between I-880, SR-260, City of Oakland downtown neighborhoods, and the City of Alameda
- Reduce freeway-bound regional traffic and congestion on local roadways and in area neighborhoods



# Major Roadway Improvements



- 1 **Realign** WB I-980 Jackson St off-ramp and reconstruct 5<sup>th</sup> St
- 2 **Construct** right-turn from Posey Tube onto Horseshoe to NB Jackson St on-ramp
- 3 **Widen** NB I-880 Oak off-ramp, **remove** NB I-880 Broadway off-ramp, **reconstruct** 6<sup>th</sup> St for multi-modal access (Oak St to Washington St)
- 4 **Restripe** 7<sup>th</sup> St and improve intersections
- 5 **Restripe** Madison for 2-way travel between 4<sup>th</sup> to 6<sup>th</sup> St
- 6 **Restripe** Jackson for 1-way between 5<sup>th</sup> to 6<sup>th</sup>
- 7 **Restripe** Oak St for multimodal access (2-way cycle track from 3<sup>rd</sup> to 9<sup>th</sup> St)
- 8 **Reconfigure** intersections at Broadway and 6<sup>th</sup> and 5<sup>th</sup> St

# Project Design – Selected Areas

6<sup>TH</sup> STREET LOOKING WEST TOWARD JACKSON STREET



Removal of the northbound I-880 off-ramp

Class IV Cycle Track

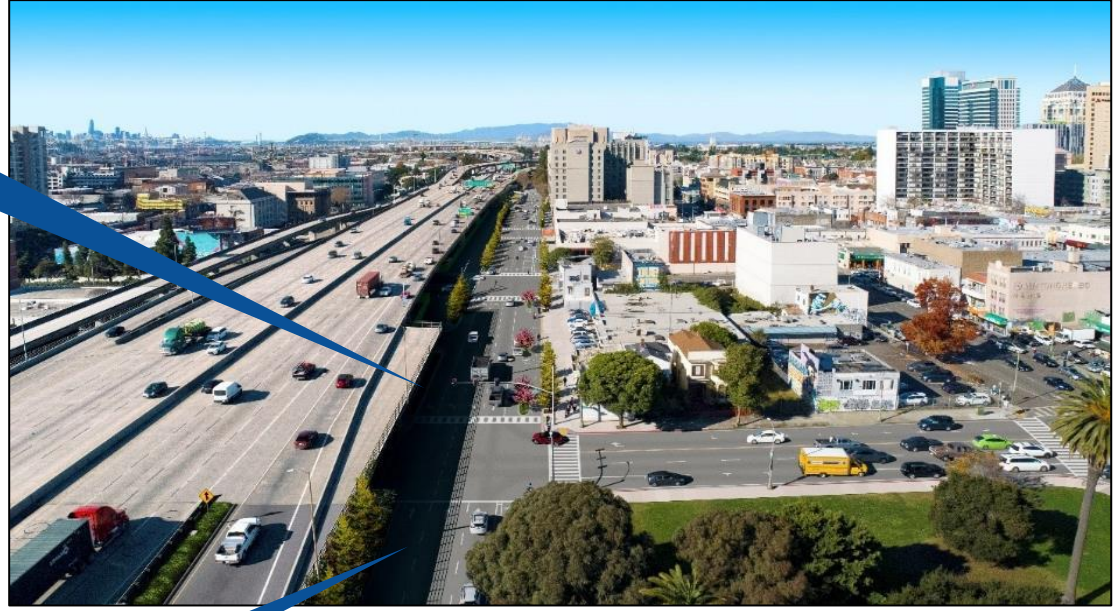
Removal of the northbound I-880 Broadway off-ramp

Relocation of westbound I-980 Jackson Street off-ramp to the west along 5<sup>th</sup> Street



Horseshoe connector under I-880

Reconstruction of east wall to construct right-turn from Posey Tube onto northbound I-880 Jackson Street on-ramp



Extension of 6<sup>th</sup> Street

CORNER OF 5<sup>TH</sup> STREET AND JACKSON STREET LOOKING WEST



# Types of Bicycle Facility

This project will add over 1.9 miles of new bike facilities and 0.7 miles of new sidewalks in Oakland!

**Class I**  
Shared-Use Path



0.5 mile

**Class II**  
Bike Lane (incl. protected lane)



0.4 mile

**Class III**  
Bike Lane (incl. sharrow, Bike Blvd.)



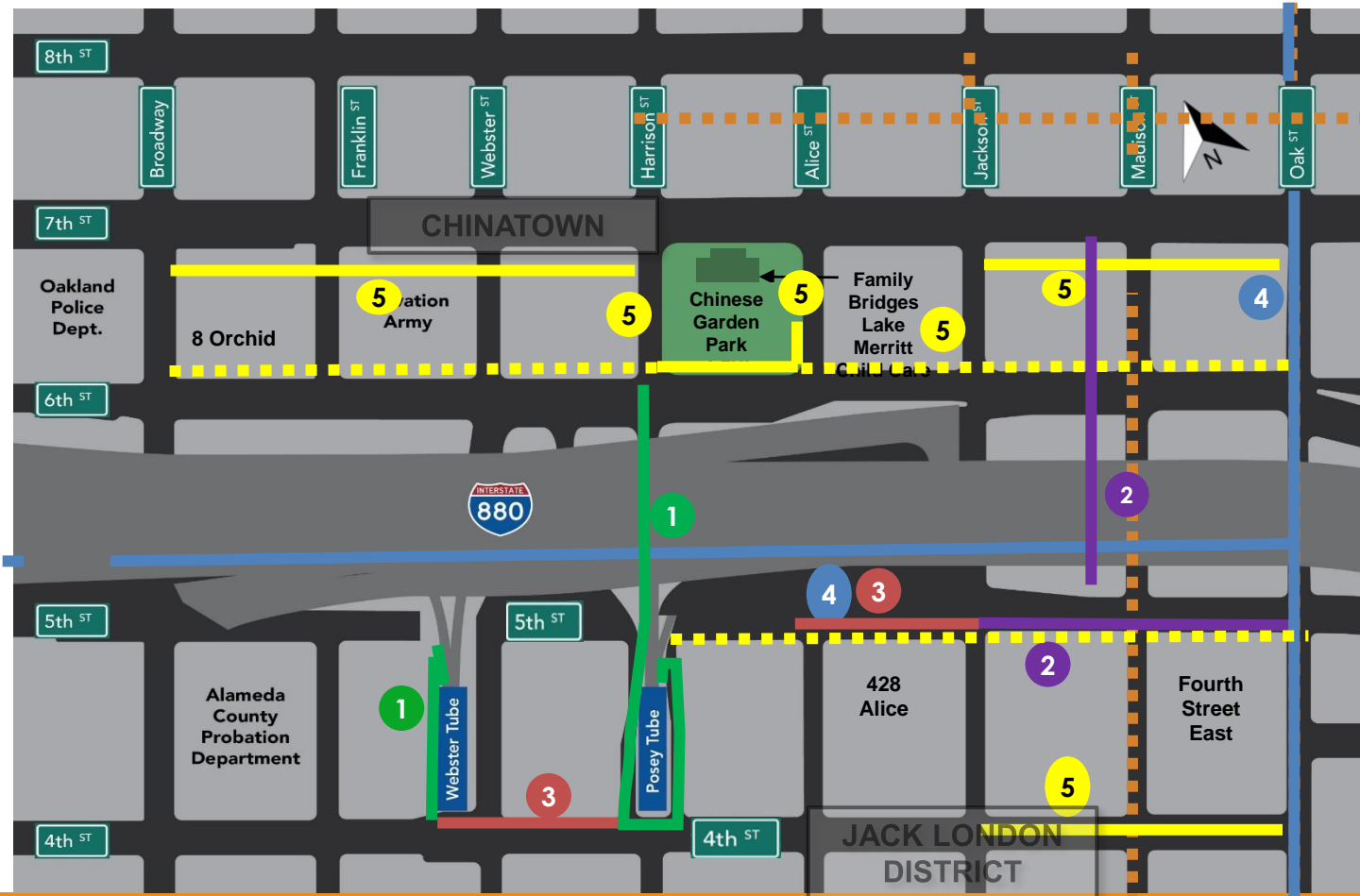
0.2 mile

**Class IV**  
Cycle Track



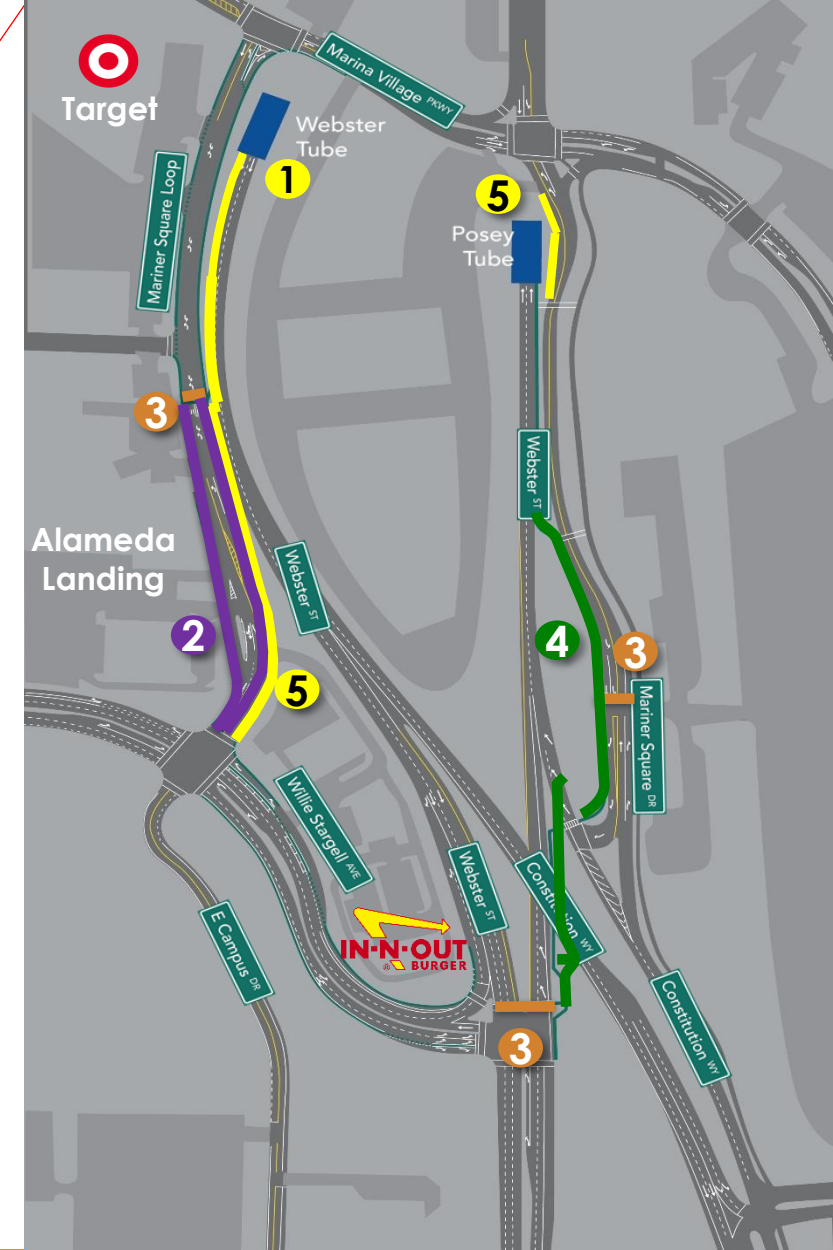
0.8 mile

# Bike/Ped Safety and Access Improvements in Oakland

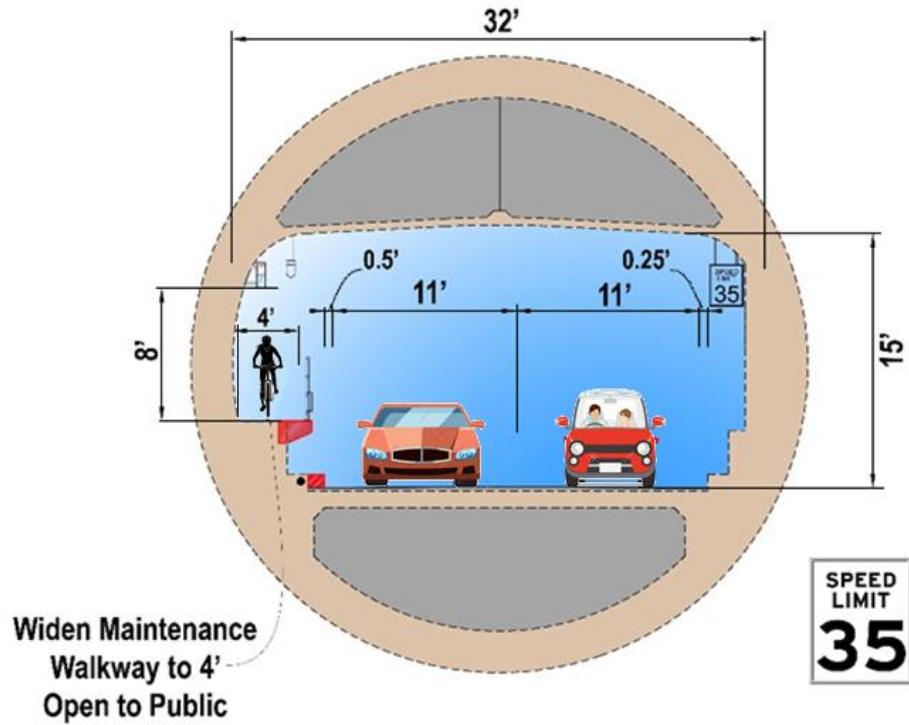


# Bike/Ped Safety and Access Improvements in Alameda

- 1 Widen and open **walkway** through Webster Tube and along Webster Street connecting to Mariner Square Loop (0.8 miles)
- 2 New **Class II** bike lane on Mariner Square Loop (0.3 miles)
- 3 Add crosswalks to connect ped/bike paths
- 4 **New Class I path**: Realign and widen path to 8 feet (0.3 miles)
- 5 **Sidewalk extension** on Mariner Square Loop and Mariner Square Drive (0.3 miles)

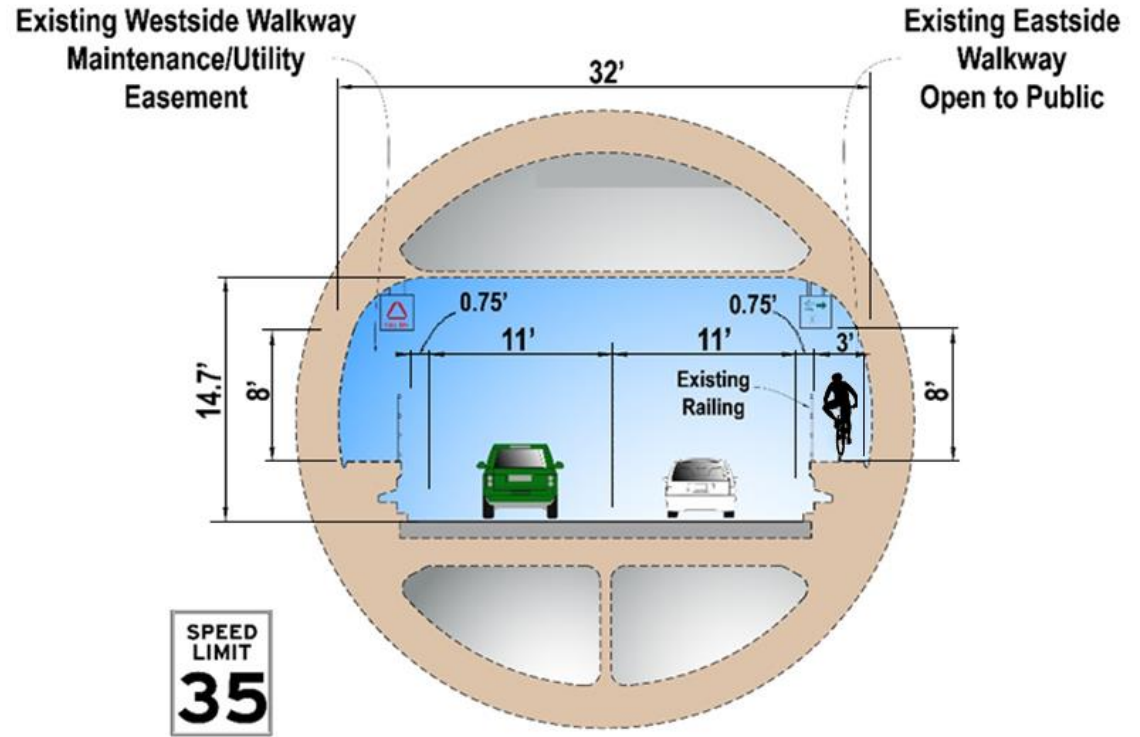


# Tube Improvements



Webster Tube Cross-Section

Section D - Looking North Towards Oakland



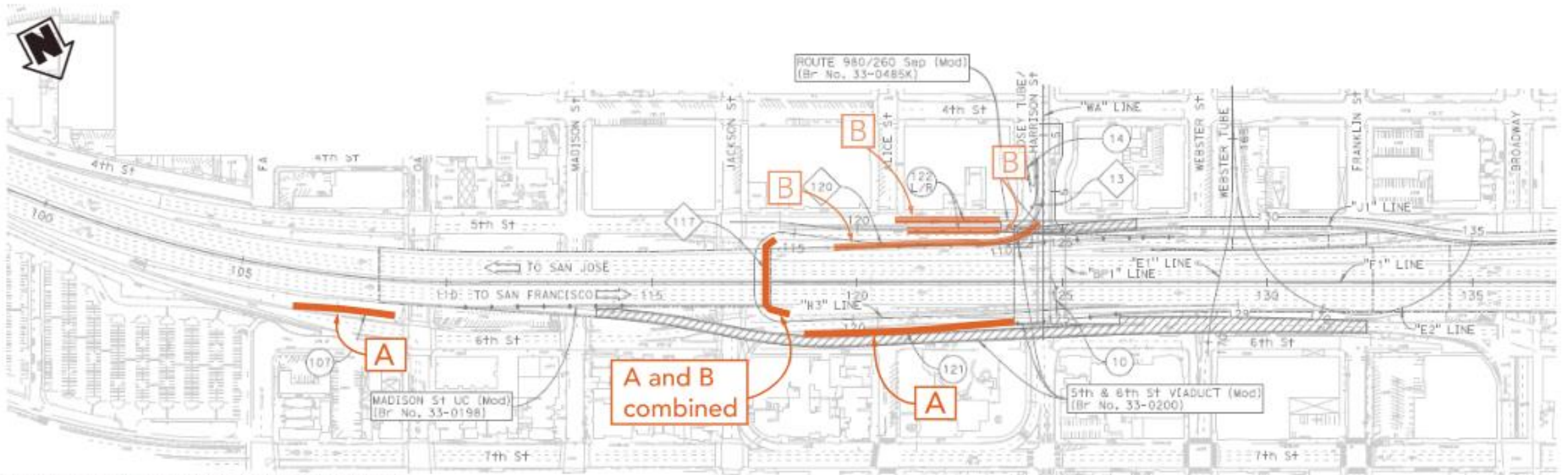
Posey Tube Cross-Section

Section D - Looking North Towards Oakland



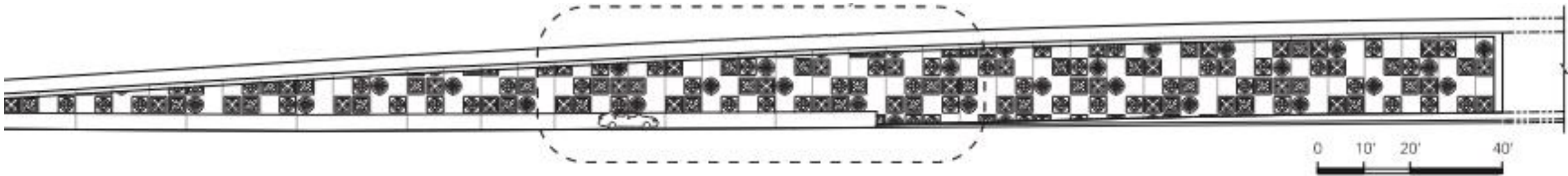
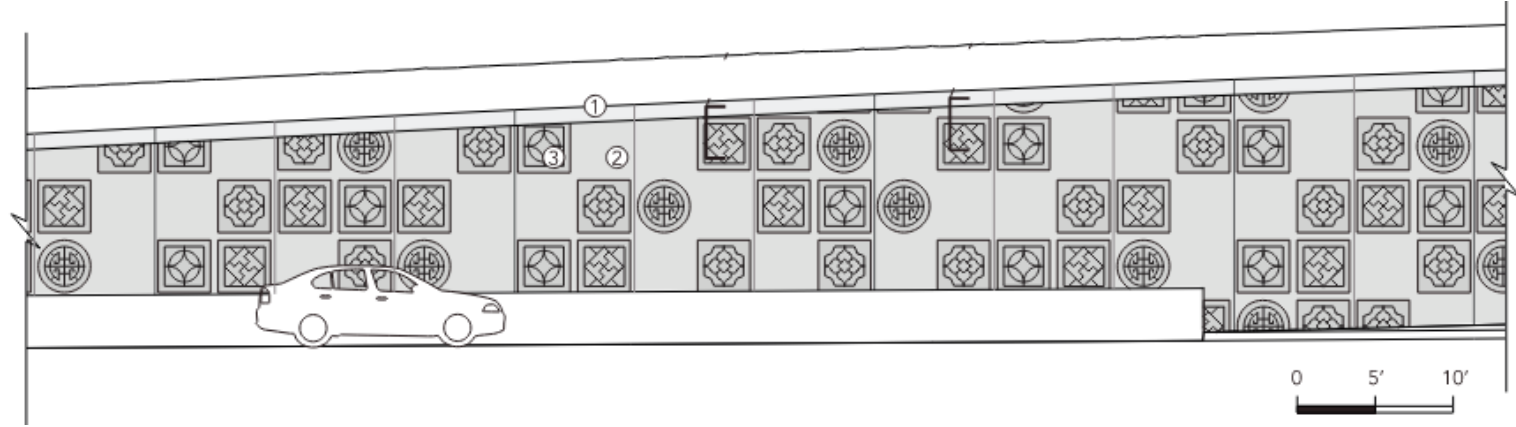
# Aesthetics-Key Map

- Incorporating Standards for Treatment of Historic Properties including Posey Tube
- Adhering to Built Environment Treatment Plan
- Compliance with Section 106 of the National Historic Preservation Act

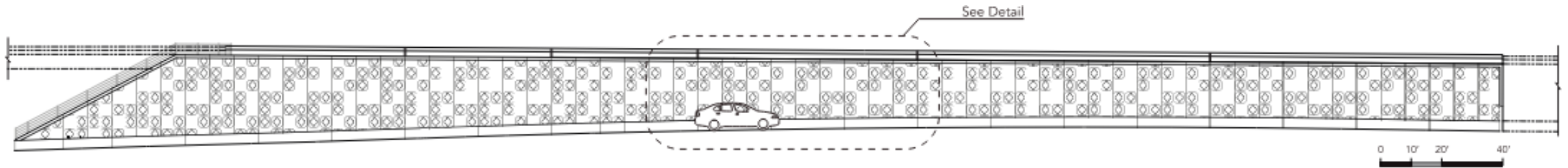
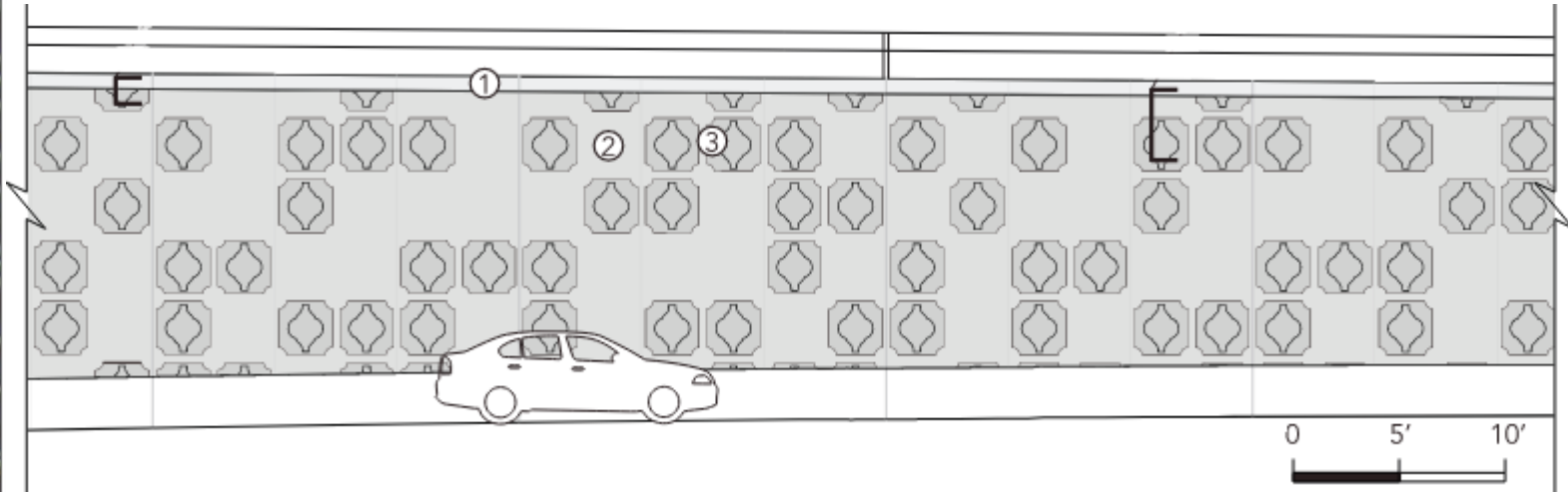


Structure and Aesthetic Treatment Concept Key Map

# Aesthetics-Concept A (north of I-880)



# Aesthetics-Concept B (south of I-880)



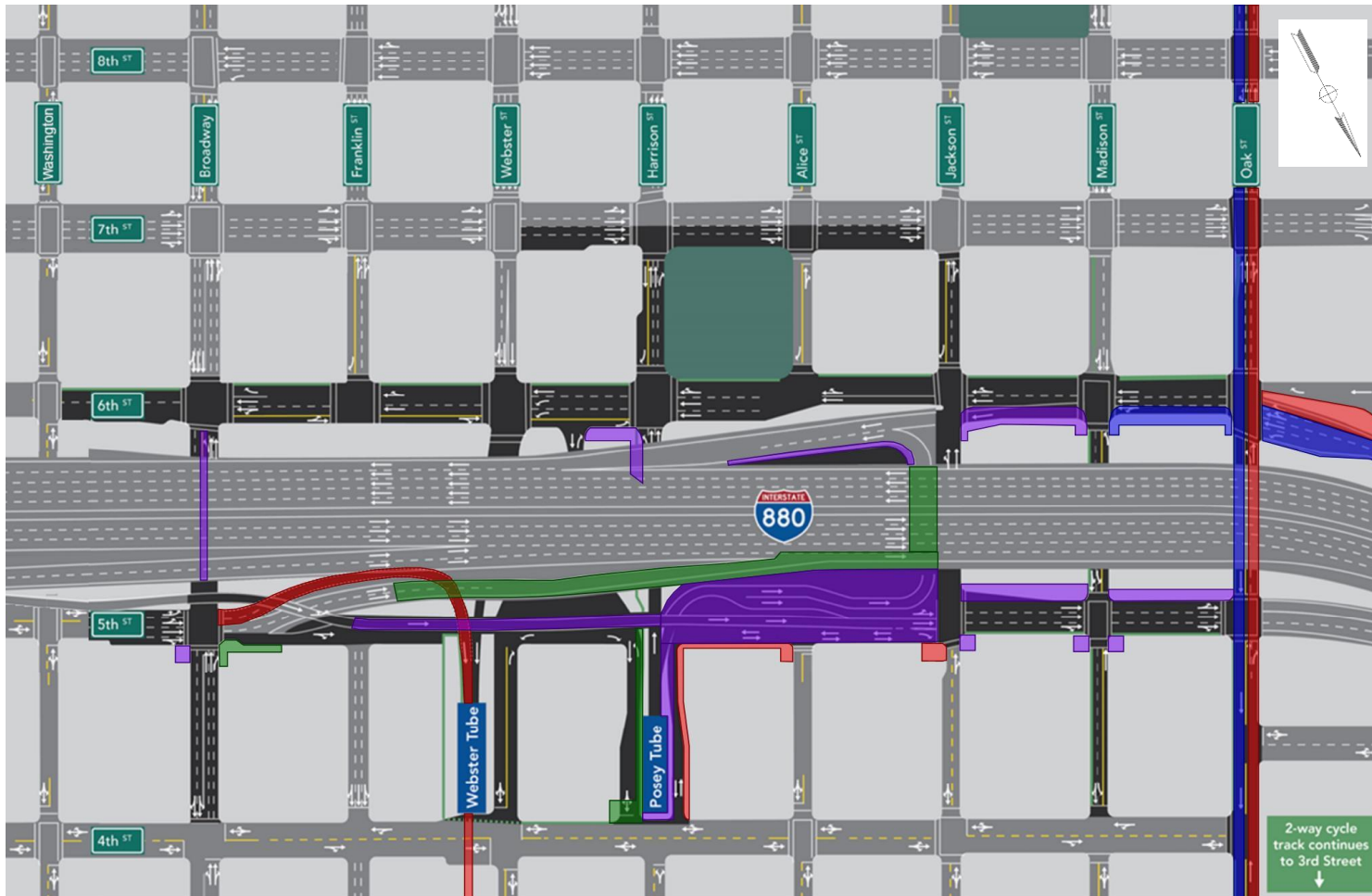
# Construction Schedule

	2025				2026				2027				2028			
	Winter	Spring	Summer	Fall	Winter	Spring	Summer	Fall	Winter	Spring	Summer	Fall	Winter	Spring	Summer	Fall
Stage 1		[Green shaded area]														
Stage 2									[Blue shaded area]							



# Construction – Stage 1

## Duration (1.5 YEARS)



### STAGE 1A ~ 2 MONTHS

- OAK STREET OFF RAMP
- OAK STREET AND 5TH STREET
- MARINER SQUARE LOOP
- WEBSTER TUBE IMPROVEMENTS

### STAGE 1B ~ 2 MONTHS

- OAK STREET OFF RAMP
- OAK STREET AND 6TH STREET
- 980-260 GRADE SEP Mod DEMOLITION
- MARINER SQUARE LOOP

### STAGE 1C ~ 8 MONTHS

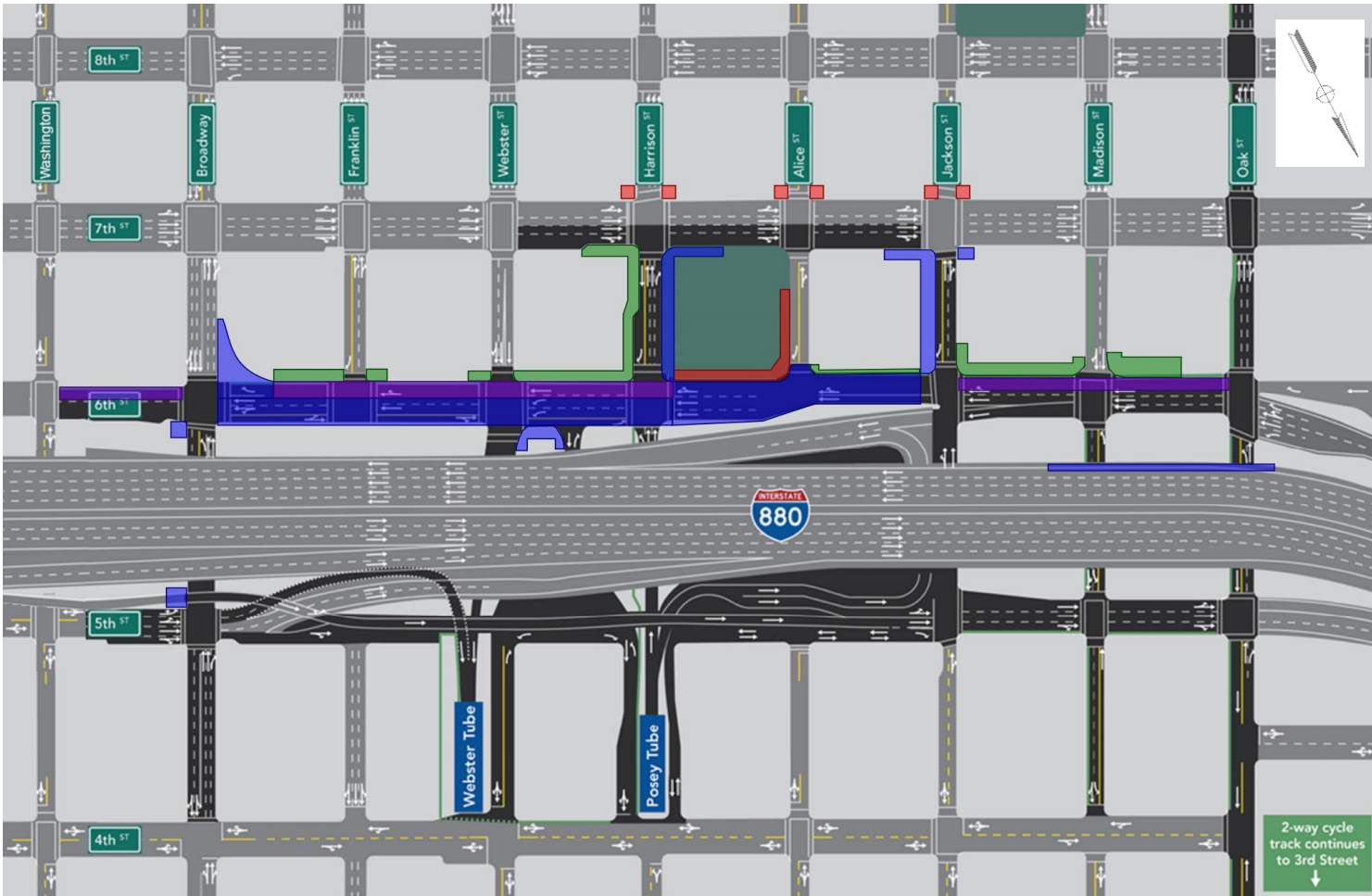
- DEMOLISH BROADWAY OFF RAMP VIADUCT
- JACKSON STREET HORSESHOE
- 980-260 GRADE SEP Mod IMPROVEMENTS
- 5TH STREET AND HARRISON STREET
- POSEY TUBE IMPROVEMENTS

### STAGE 1D ~ 6 MONTHS

- JACKSON STREET HORSESHOE
- 5TH STREET AND HARRISON STREET
- 980-260 GRADE SEP Mod IMPROVEMENTS
- POSEY TUBE IMPROVEMENTS
- BROADWAY IMPROVEMENTS

# Construction – Stage 2

## Duration (1 YEAR)



### STAGE 2A ~ 3 MONTHS

- DEMOLISH BROADWAY OFF RAMP
- ALICE STREET AND 6TH STREET
- 7TH STREET ADA IMPROVEMENTS

### STAGE 2B ~ 4 MONTHS

- NB 880 OUTSIDE BARRIER
- JACKSON AND ALICE STREET
- 6TH AND HARRISON STREET
- WEBSTER STREET
- BROADWAY IMPROVEMENTS

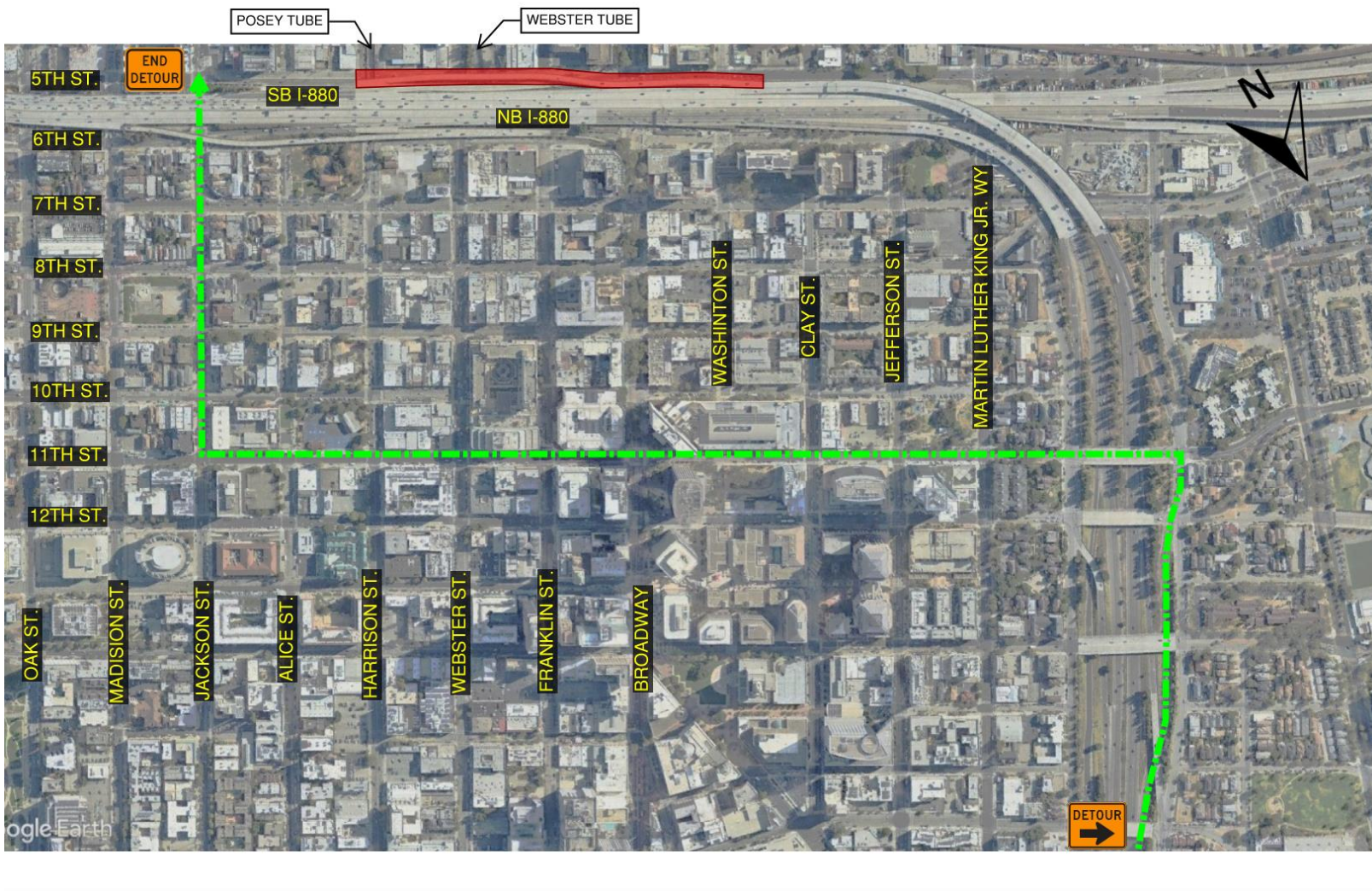
### STAGE 2C ~ 2 MONTHS

- 6TH AND WEBSTER STREET
- HARRISON STREET IMPROVEMENTS

### STAGE 2D ~ 3 MONTHS

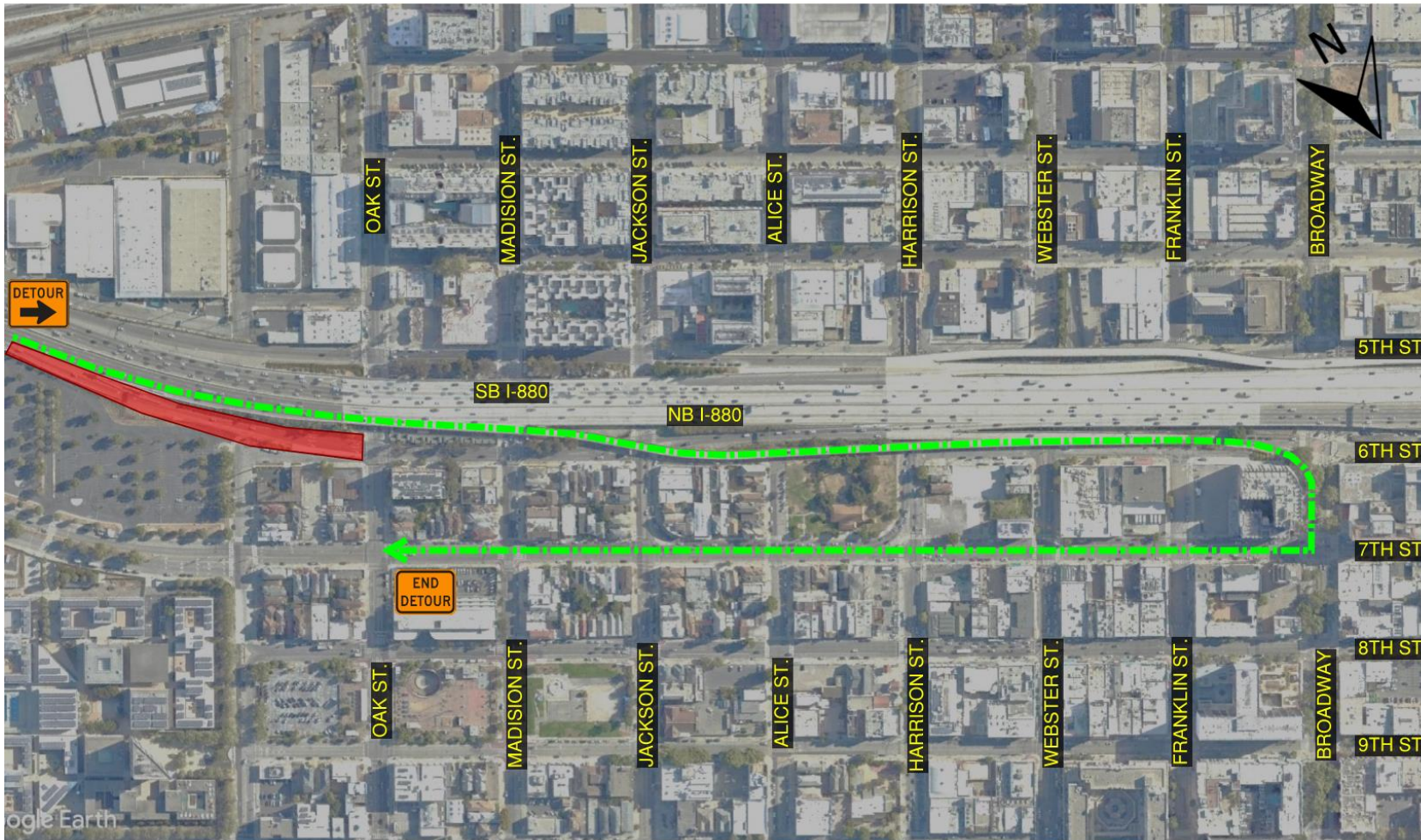
- 6TH AND 7TH STREET
- MADISON AND JACKSON STREET
- ALICE AND HARRISON STREET
- WEBSTER AND FRANKLIN STREET
- BROADWAY IMPROVEMENTS

# I-980 Jackson Street Off Ramp Detour



- Approximately 1 year to Demolish existing structure, realign and construct new structure
- Detour will re-route drivers via 11th Street to Jackson Street

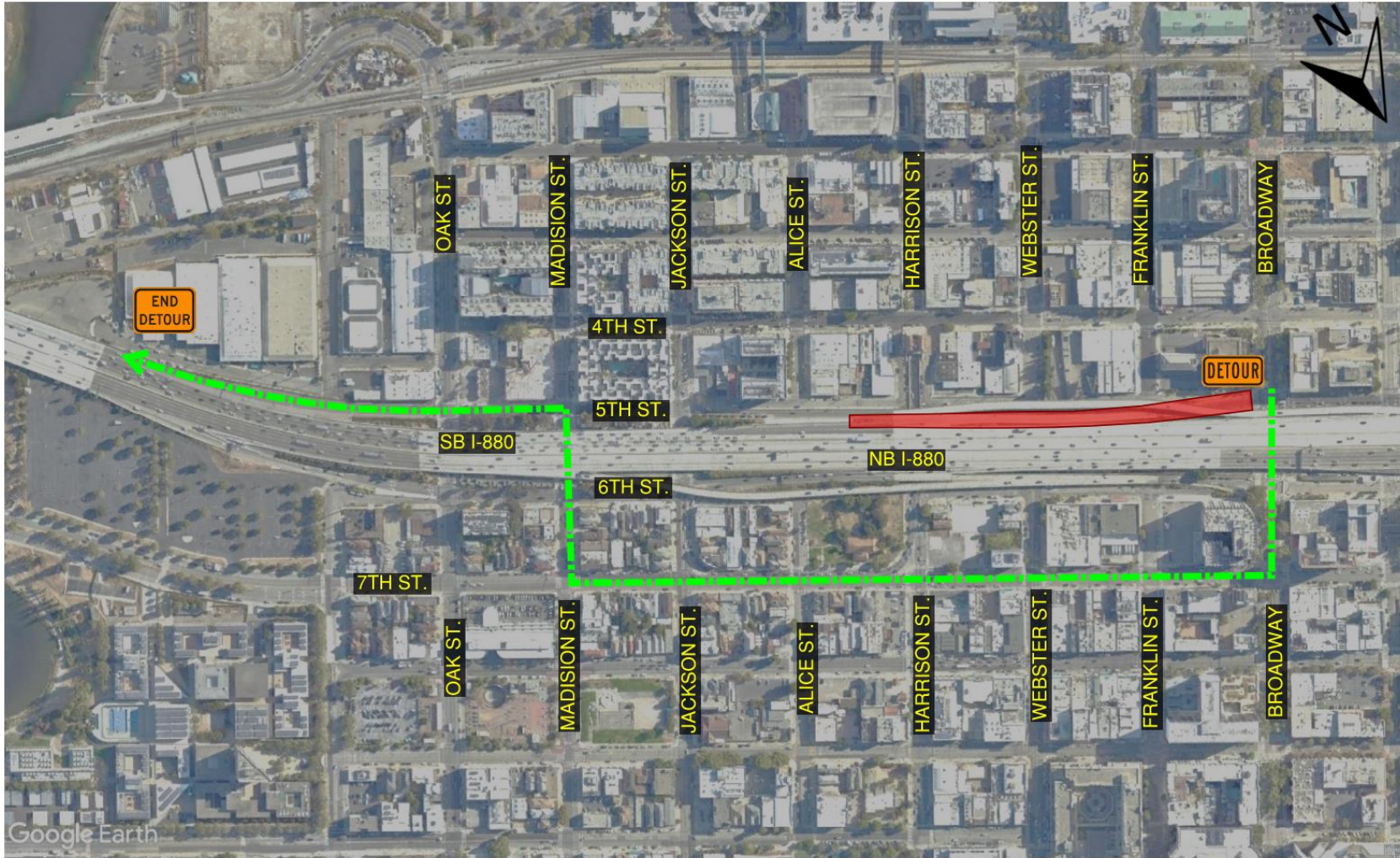
# Oak Street Off-Ramp Detour



- Nighttime and Weekend closures for ramp improvements
- Detour will re-route drivers via Broadway Exit and loop back on 7th Street



# SB I-880 On-Ramp Detour



- Approximately 6 months to demolish and reconstruct retaining wall along SB I-880
- Detour will re-route drivers via 7th Street to Madison Street to 5th Street

# Posey Tube Detour



- Nighttime and Weekend closures for structure demolition and traffic control set up
- Detour will re-route drivers via Lincoln Ave to Park Street to NB I-880 and exiting on Oak Street

# Webster Tube Detour



- Nighttime closures for traffic control set up
- Detour will re-route drivers via SB I-880 to 23rd Street to Park Street to Lincoln Ave

# Maintaining Pedestrian and Bike Mobility



- Temporary Pedestrian Paths during construction will provide protected walkways around the construction work zones



- When existing Class I, II and IV bike facilities are impacted by construction activities Class III bike routes will be provided

# Project Schedule

Project Milestone	Schedule By Phase
Scoping	Summer 2009 - Spring 2011
Preliminary Engineering/Environmental	Fall 2017 to Early 2022
Final Design	February 2022 to Fall 2024
Project Advertisement/Bidding Process	Early 2022 to Fall 2024
Construction	Spring 2025 to Summer 2028

\*Design has achieved 95% milestone and is progressing to 100%



# Questions



# Thank you!

