

EXHIBIT 1

Oakland Alameda Access Project

Providing Access and Connections

February 2024

Exhibit 1 6-D
Transportation Commission
8-28-24

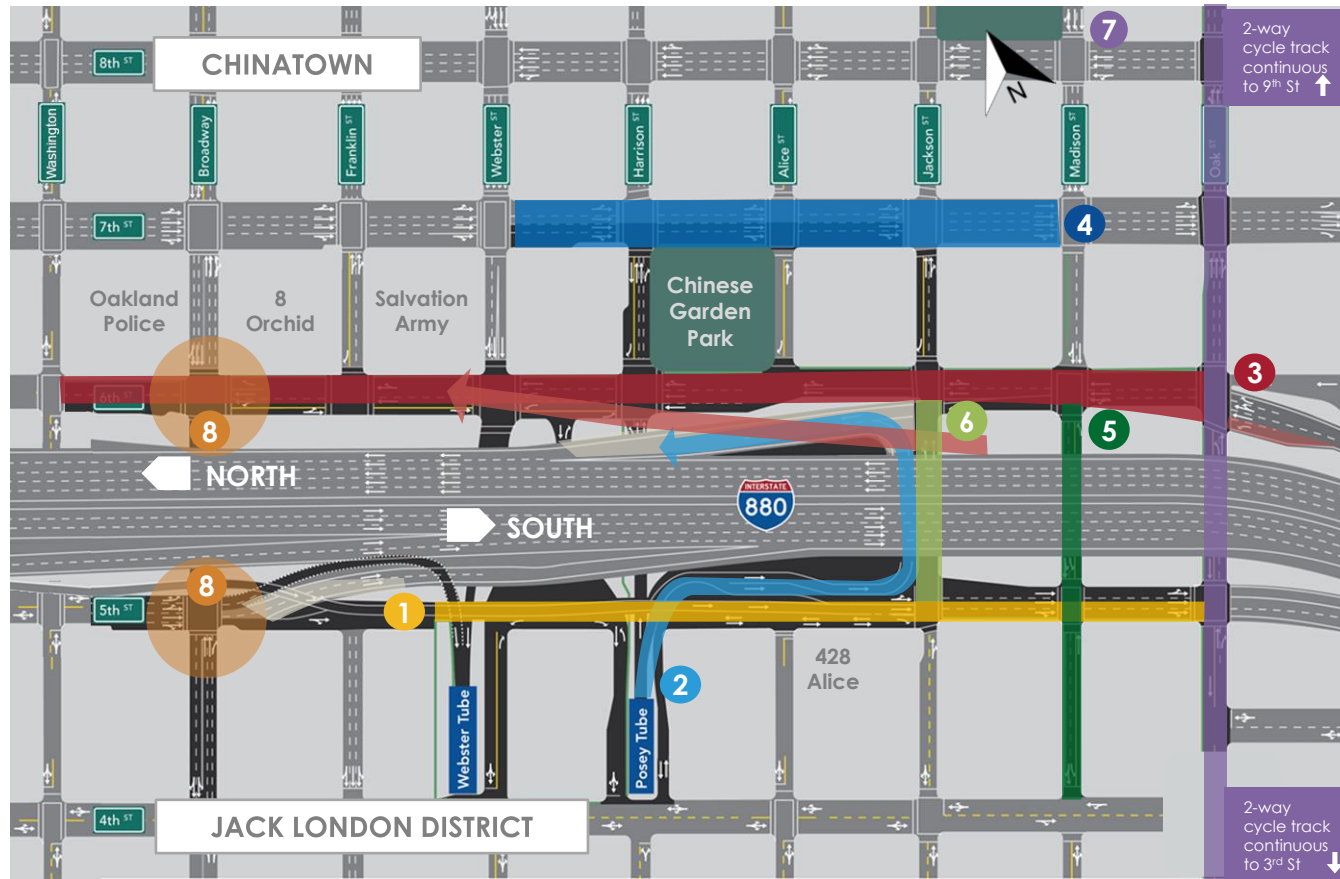


Project Purpose and Need

- Improve multimodal safety and reduce conflicts between regional and local traffic
- Enhance bicycle and pedestrian accessibility and connectivity within the project study area
- Improve mobility and accessibility for travelers between I-880, SR-260, City of Oakland downtown neighborhoods, and the City of Alameda
- Reduce freeway-bound regional traffic and congestion on local roadways and in area neighborhoods



Major Roadway Improvements



- 1 **Realign** WB I-980 Jackson St off-ramp and reconstruct 5th St
- 2 **Construct** right-turn from Posey Tube onto Horseshoe to NB Jackson St on-ramp
- 3 **Widen** NB I-880 Oak off-ramp, **remove** NB I-880 Broadway off-ramp, **reconstruct** 6th St for multi-modal access (Oak St to Washington St)
- 4 **Restripe** 7th St and improve intersections
- 5 **Restripe** Madison for 2-way travel between 4th to 6th St
- 6 **Restripe** Jackson for 1-way between 5th to 6th
- 7 **Restripe** Oak St for multimodal access (2-way cycle track from 3rd to 9th St)
- 8 **Reconfigure** intersections at Broadway and 6th and 5th St

Project Design – Selected Areas

6TH STREET LOOKING WEST TOWARD JACKSON STREET



Removal of the northbound I-880 off-ramp

Class IV Cycle Track

Removal of the northbound I-880 Broadway off-ramp

Relocation of westbound I-980 Jackson Street off-ramp to the west along 5th Street



Horseshoe connector under I-880

Reconstruction of east wall to construct right-turn from Posey Tube onto northbound I-880 Jackson Street on-ramp



Extension of 6th Street

CORNER OF 5TH STREET AND JACKSON STREET LOOKING WEST



Types of Bicycle Facility

This project will add over 1.9 miles of new bike facilities and 0.7 miles of new sidewalks in Oakland!

Class I
Shared-Use Path



0.5 mile

Class II
Bike Lane (incl. protected lane)



0.4 mile

Class III
Bike Lane (incl. sharrow, Bike Blvd.)



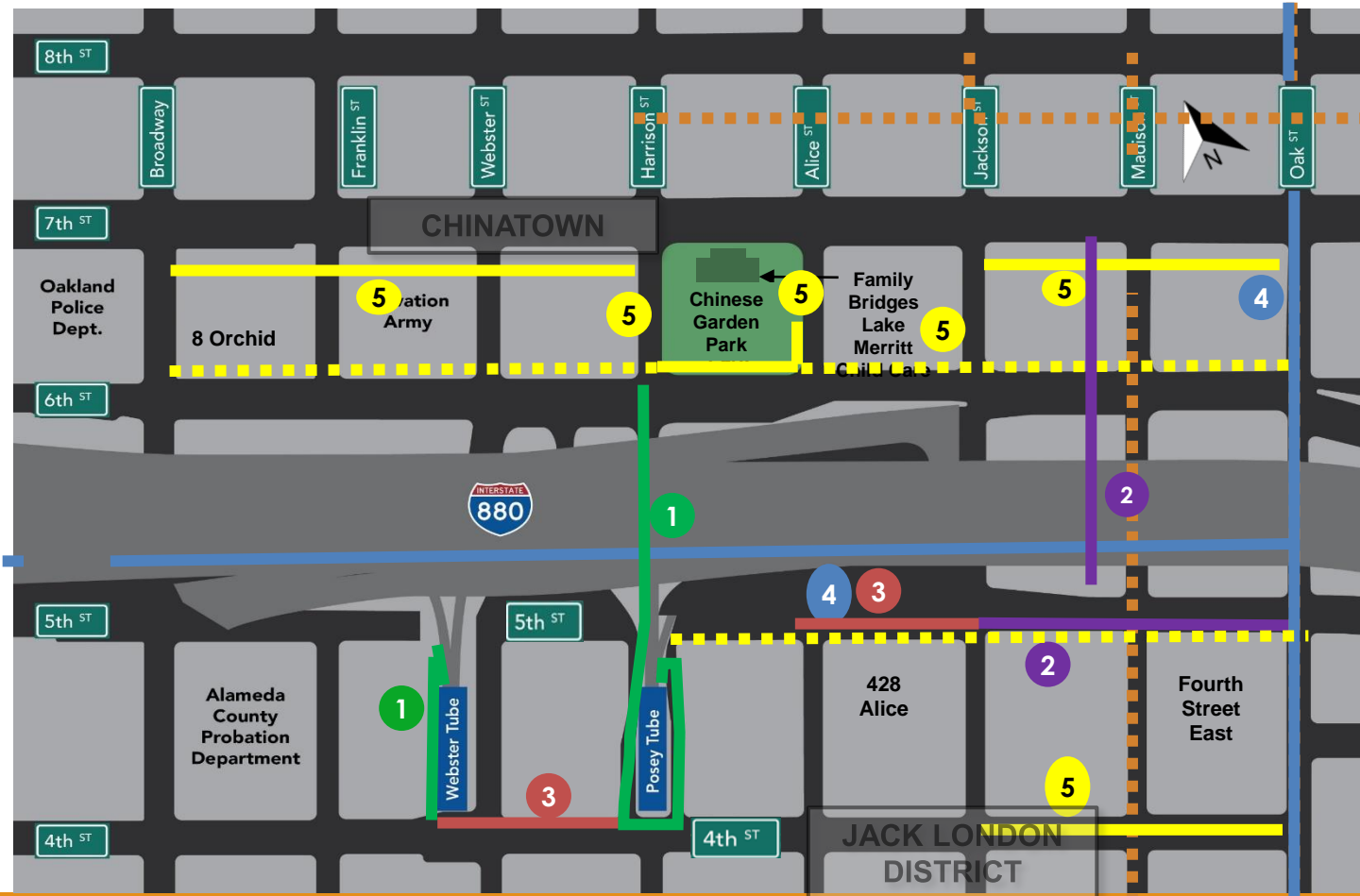
0.2 mile

Class IV
Cycle Track



0.8 mile

Bike/Ped Safety and Access Improvements in Oakland

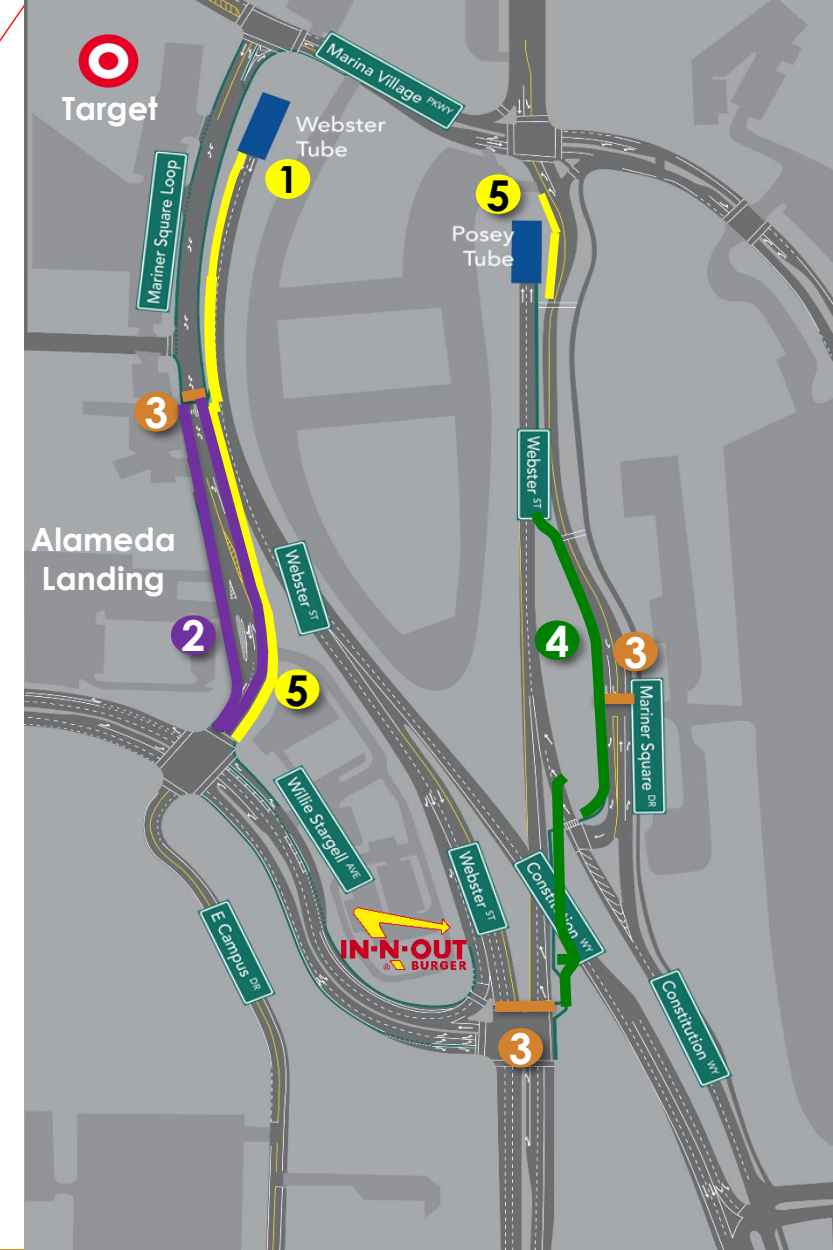


- Existing sidewalk
- Existing bike facility
- 1 Class I – 0.5 miles
- 2 Class II – 0.4 miles
- 3 Class III – 0.2 miles
- 4 Class IV – 0.8 miles
- 5 New sidewalk – 0.7 miles

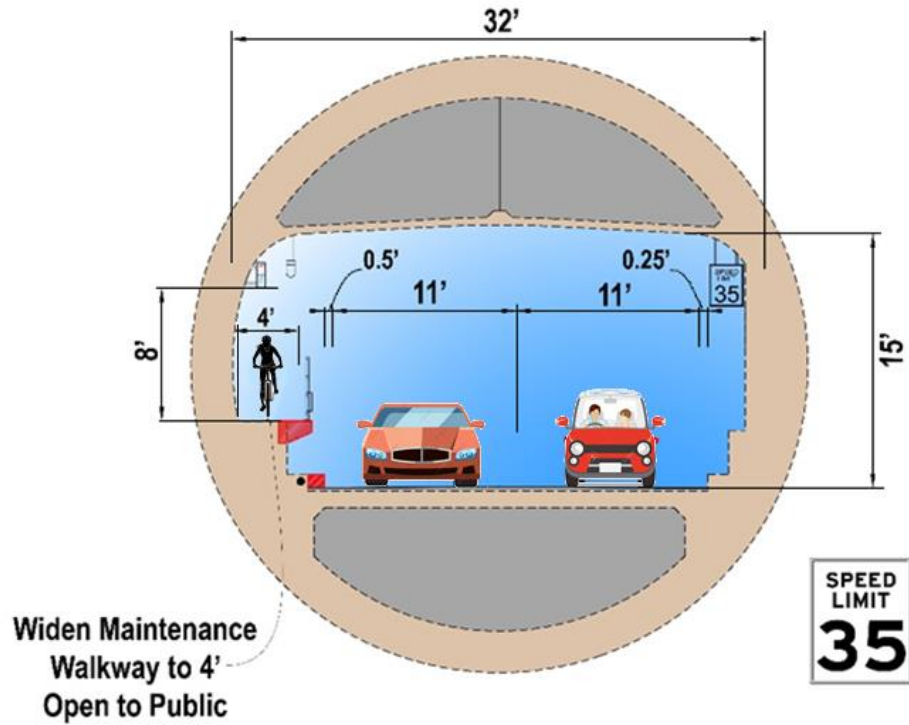


Bike/Ped Safety and Access Improvements in Alameda

- 1 Widen and open **walkway** through Webster Tube and along Webster Street connecting to Mariner Square Loop (0.8 miles)
- 2 New **Class II** bike lane on Mariner Square Loop (0.3 miles)
- 3 Add crosswalks to connect ped/bike paths
- 4 **New Class I path**: Realign and widen path to 8 feet (0.3 miles)
- 5 **Sidewalk extension** on Mariner Square Loop and Mariner Square Drive (0.3 miles)

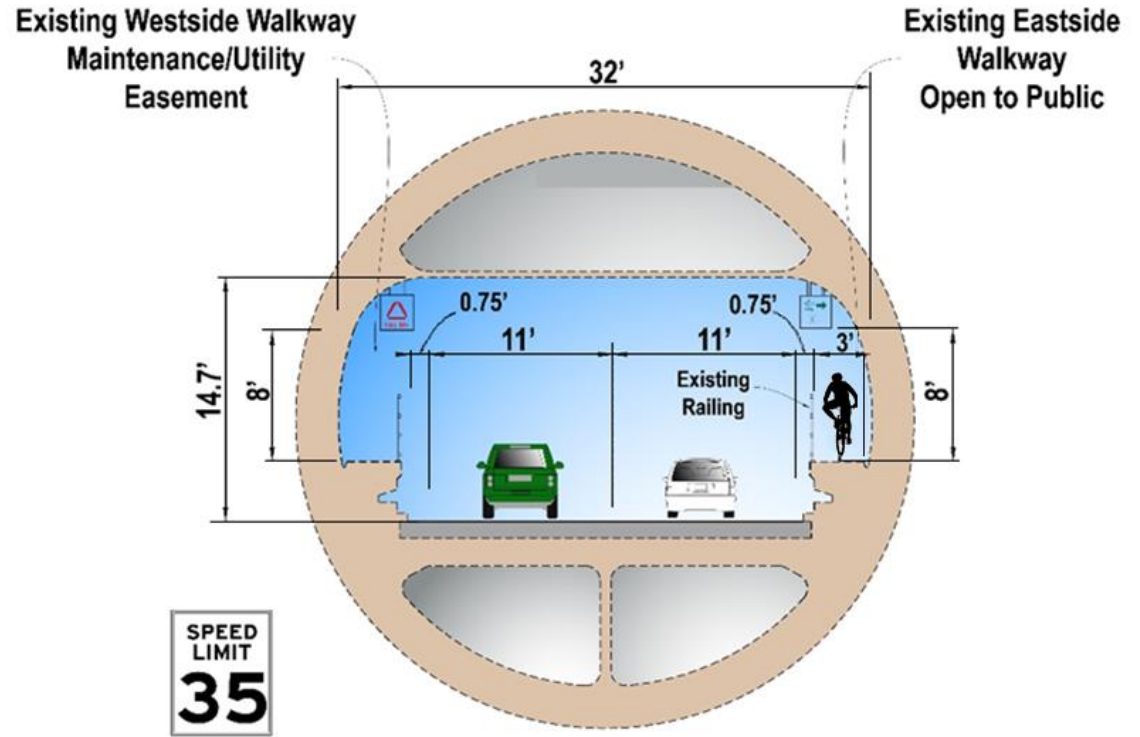


Tube Improvements



Webster Tube Cross-Section

Section D - Looking North Towards Oakland

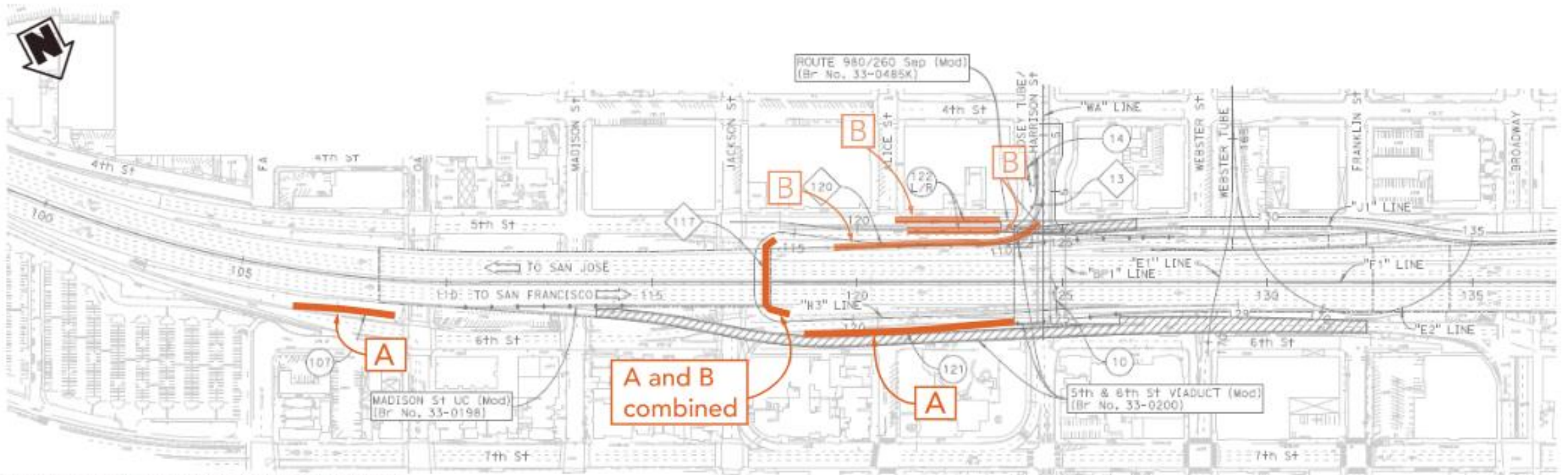


Posey Tube Cross-Section

Section D - Looking North Towards Oakland

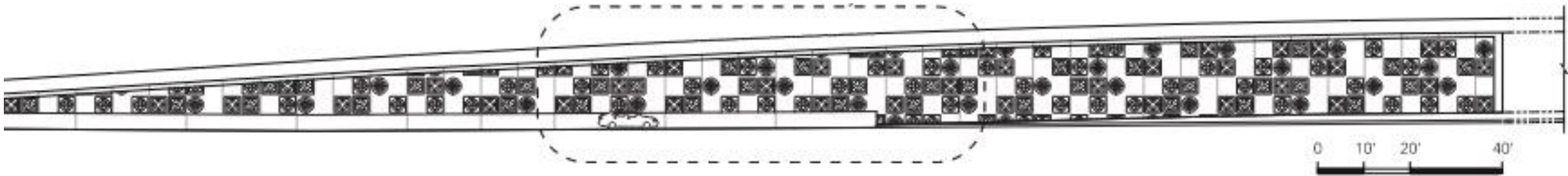
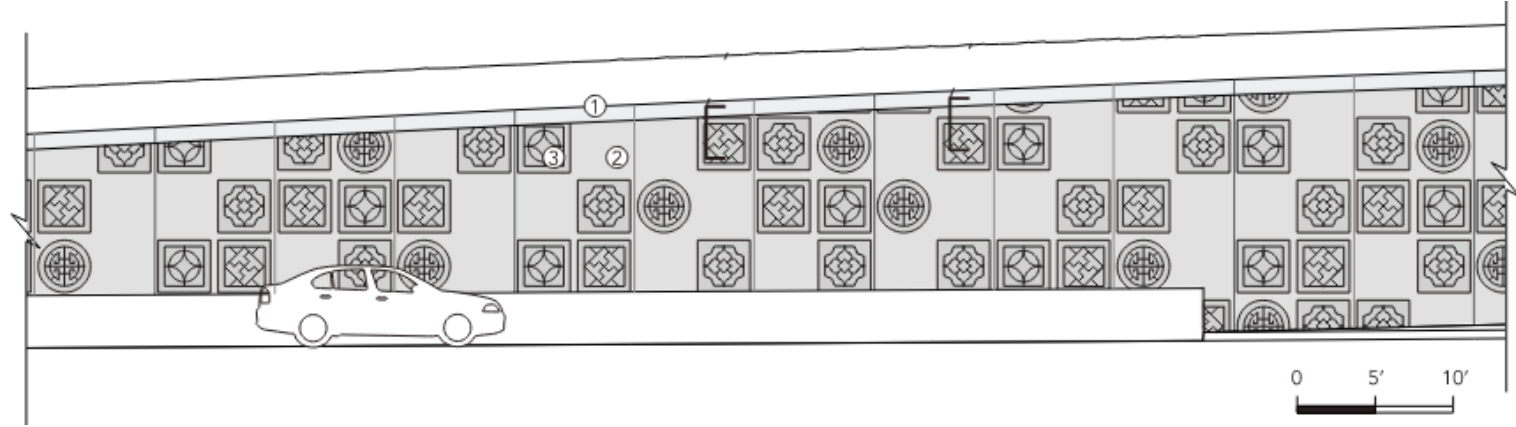
Aesthetics-Key Map

- Incorporating Standards for Treatment of Historic Properties including Posey Tube
- Adhering to Built Environment Treatment Plan
- Compliance with Section 106 of the National Historic Preservation Act

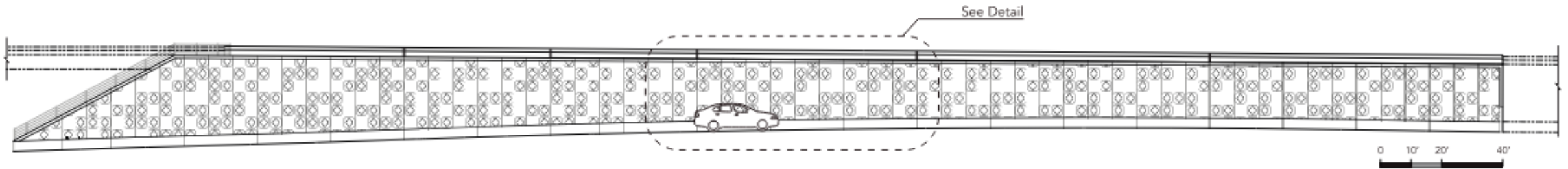
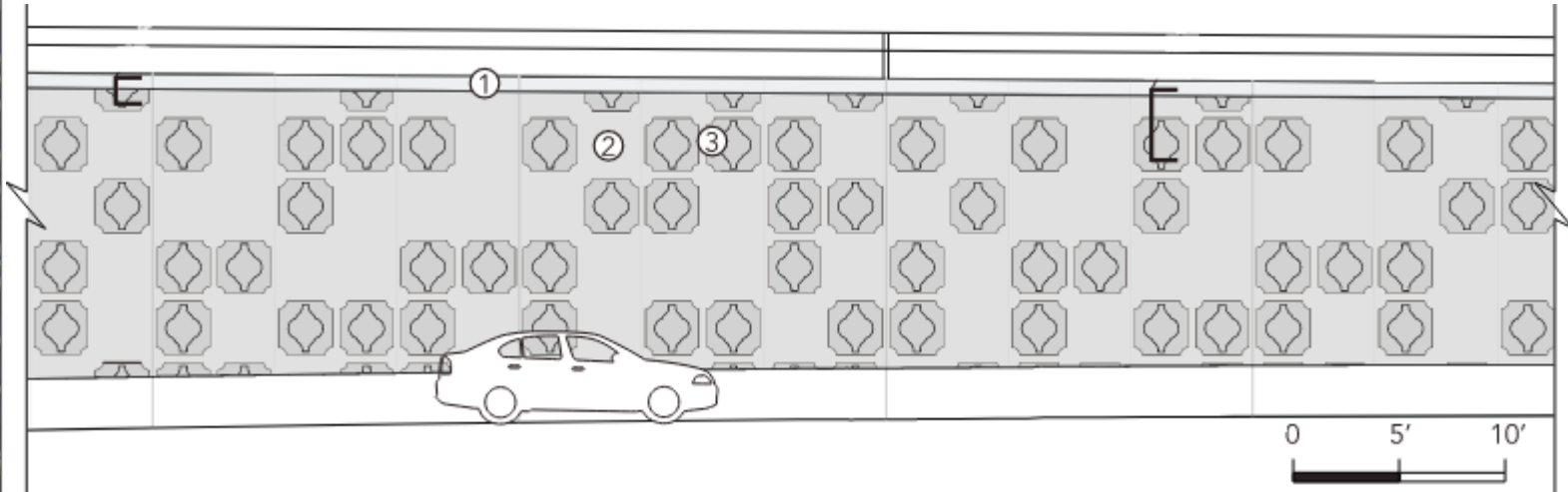


Structure and Aesthetic Treatment Concept Key Map

Aesthetics-Concept A (north of I-880)



Aesthetics-Concept B (south of I-880)



Construction Schedule

	2025				2026				2027				2028			
	Winter	Spring	Summer	Fall	Winter	Spring	Summer	Fall	Winter	Spring	Summer	Fall	Winter	Spring	Summer	Fall
Stage 1		[Green shaded area]														
Stage 2									[Blue shaded area]							



Construction – Stage 1

Duration (1.5 YEARS)



STAGE 1A ~ 2 MONTHS

- OAK STREET OFF RAMP
- OAK STREET AND 5TH STREET
- MARINER SQUARE LOOP
- WEBSTER TUBE IMPROVEMENTS

STAGE 1B ~ 2 MONTHS

- OAK STREET OFF RAMP
- OAK STREET AND 6TH STREET
- 980-260 GRADE SEP Mod DEMOLITION
- MARINER SQUARE LOOP

STAGE 1C ~ 8 MONTHS

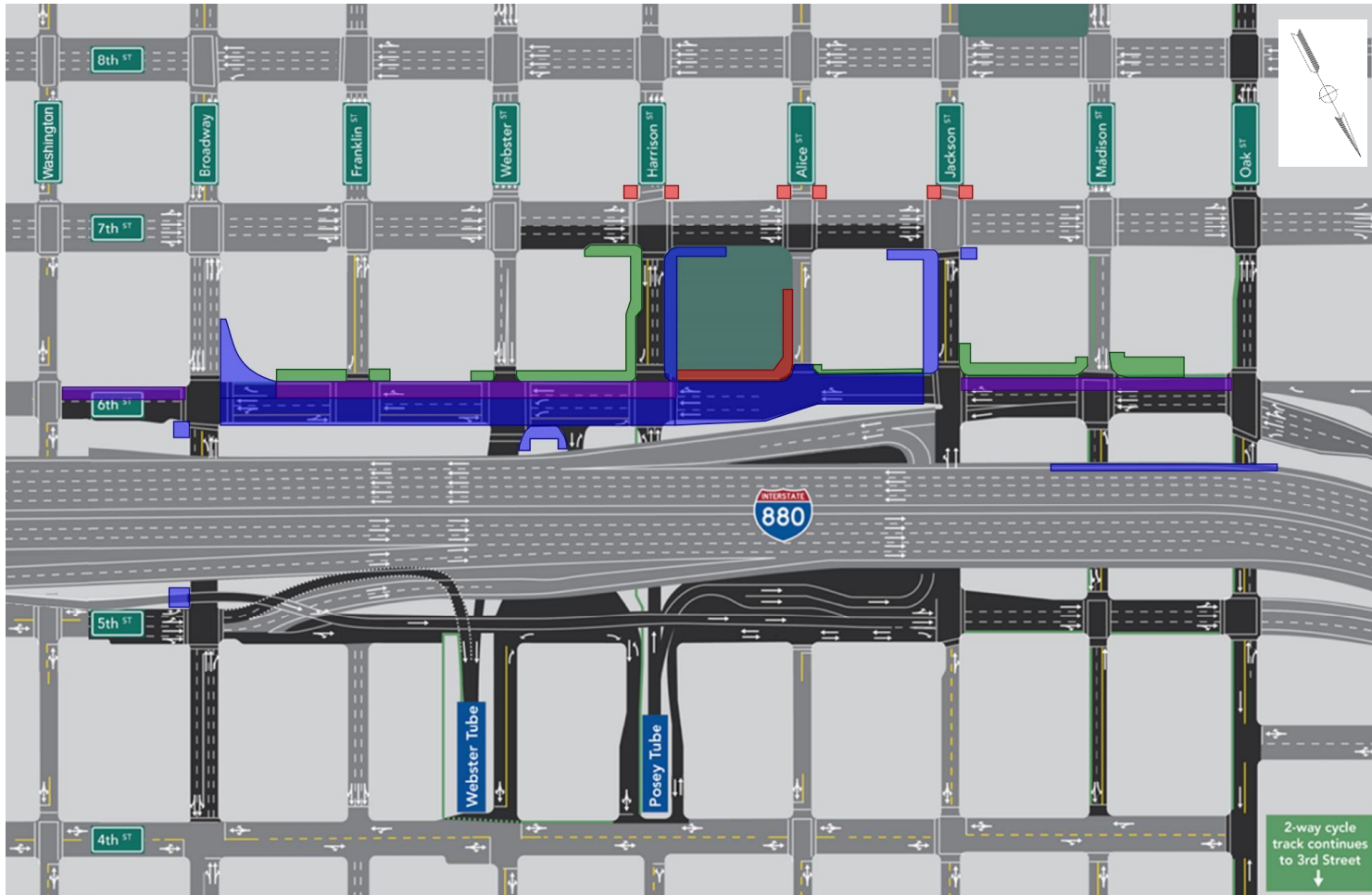
- DEMOLISH BROADWAY OFF RAMP VIADUCT
- JACKSON STREET HORSESHOE
- 980-260 GRADE SEP Mod IMPROVEMENTS
- 5TH STREET AND HARRISON STREET
- POSEY TUBE IMPROVEMENTS

STAGE 1D ~ 6 MONTHS

- JACKSON STREET HORSESHOE
- 5TH STREET AND HARRISON STREET
- 980-260 GRADE SEP Mod IMPROVEMENTS
- POSEY TUBE IMPROVEMENTS
- BROADWAY IMPROVEMENTS

Construction – Stage 2

Duration (1 YEAR)



STAGE 2A ~ 3 MONTHS

- DEMOLISH BROADWAY OFF RAMP
- ALICE STREET AND 6TH STREET
- 7TH STREET ADA IMPROVEMENTS

STAGE 2B ~ 4 MONTHS

- NB 880 OUTSIDE BARRIER
- JACKSON AND ALICE STREET
- 6TH AND HARRISON STREET
- WEBSTER STREET
- BROADWAY IMPROVEMENTS

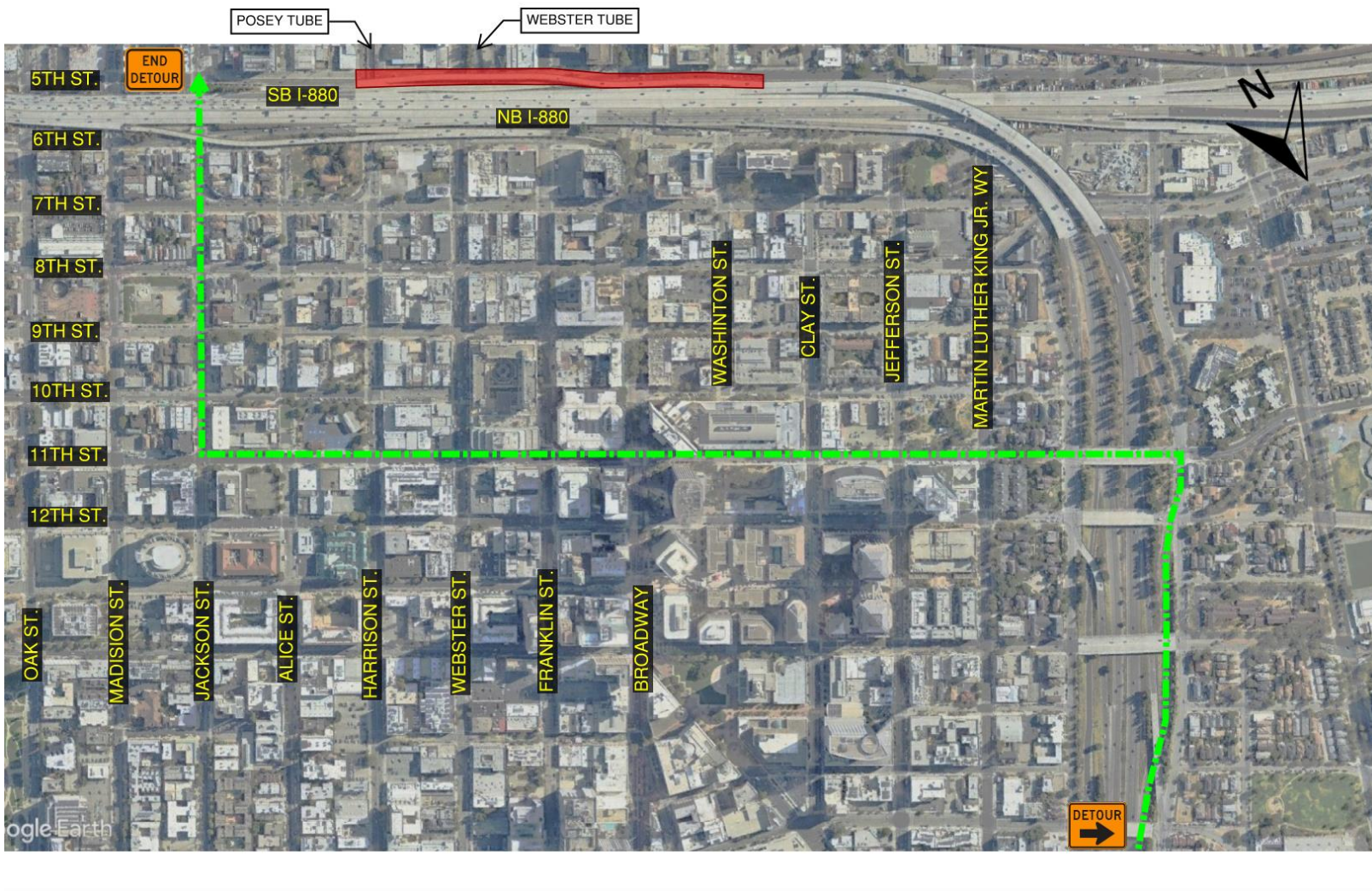
STAGE 2C ~ 2 MONTHS

- 6TH AND WEBSTER STREET
- HARRISON STREET IMPROVEMENTS

STAGE 2D ~ 3 MONTHS

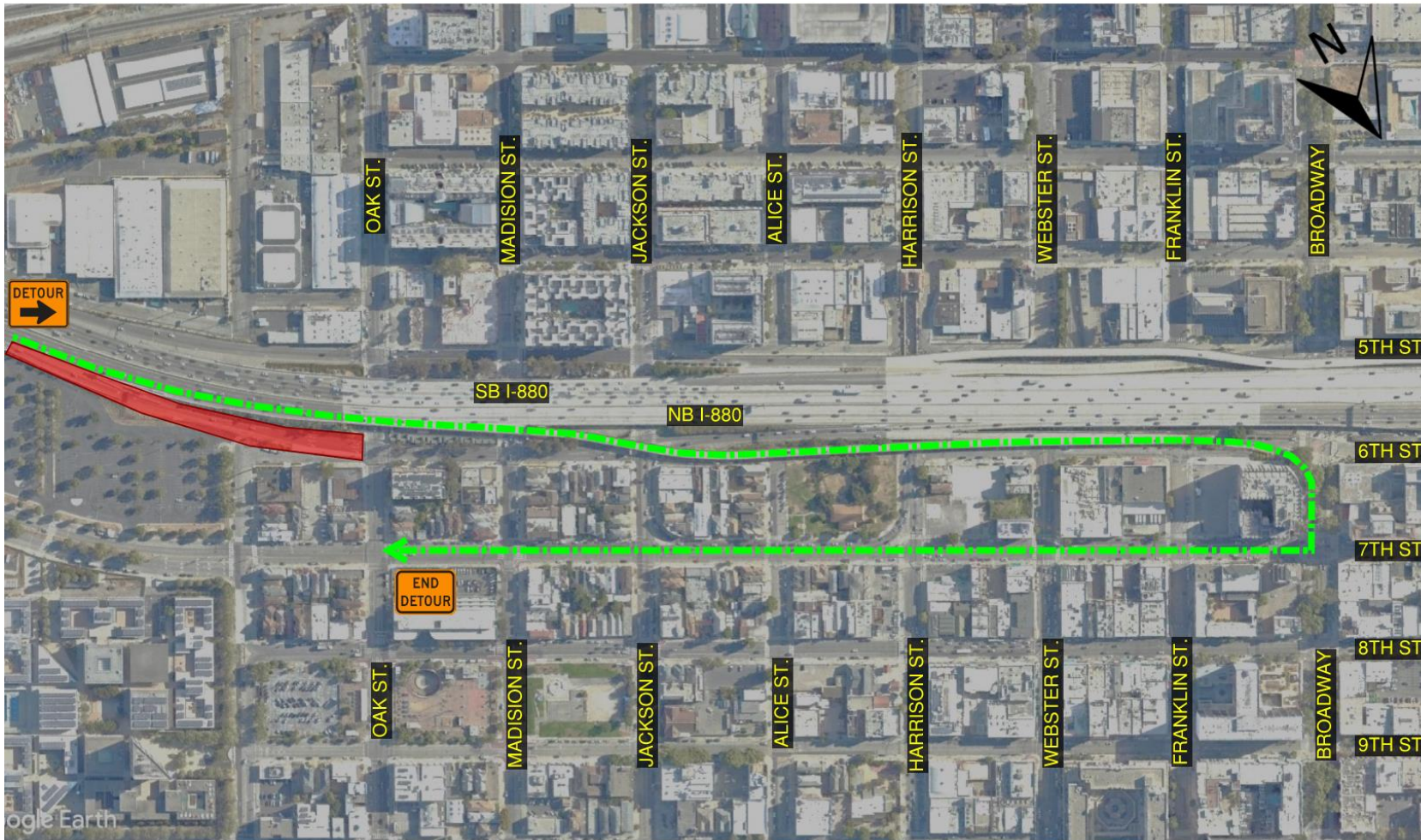
- 6TH AND 7TH STREET
- MADISON AND JACKSON STREET
- ALICE AND HARRISON STREET
- WEBSTER AND FRANKLIN STREET
- BROADWAY IMPROVEMENTS

I-980 Jackson Street Off Ramp Detour



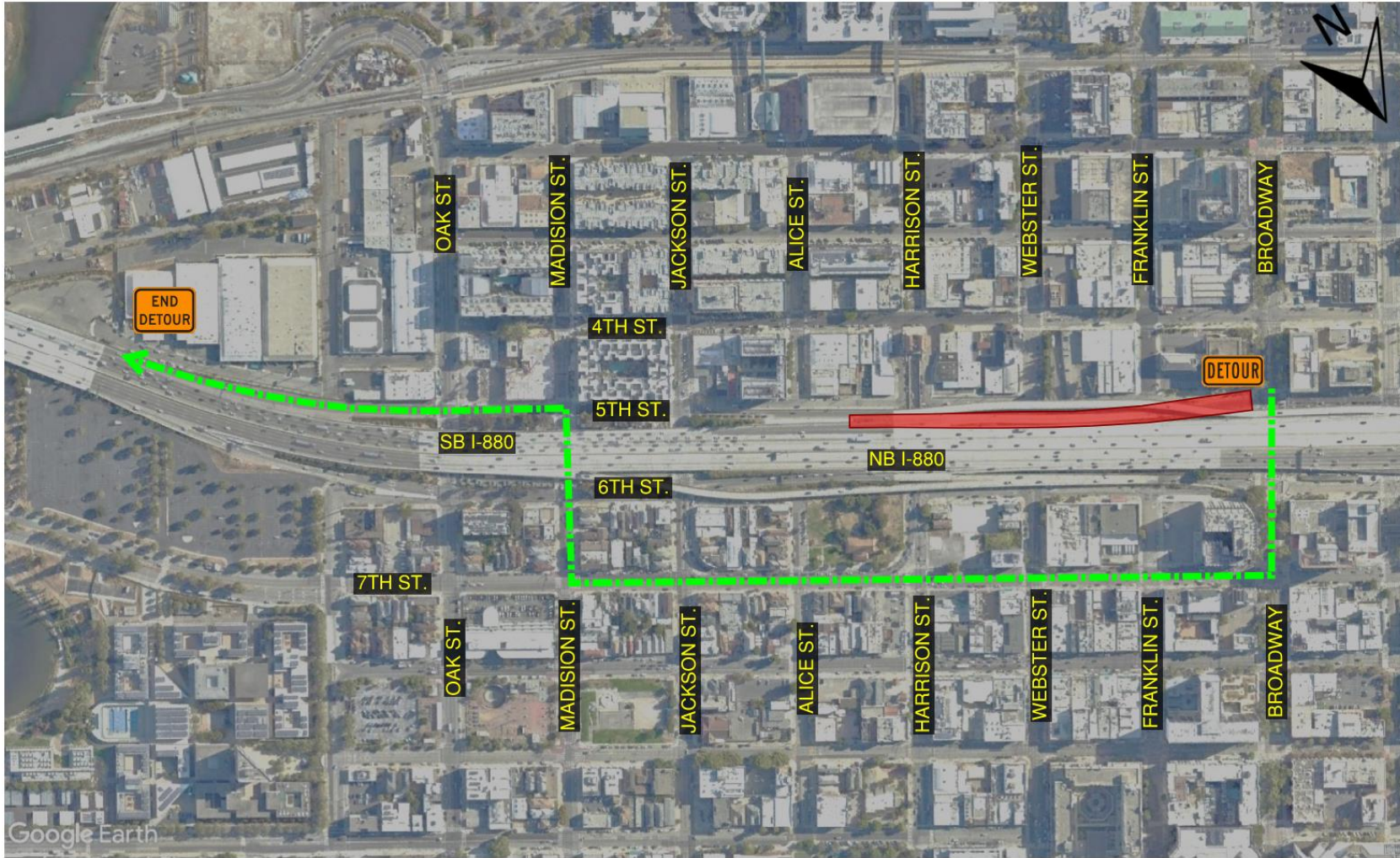
- Approximately 1 year to Demolish existing structure, realign and construct new structure
- Detour will re-route drivers via 11th Street to Jackson Street

Oak Street Off-Ramp Detour



- Nighttime and Weekend closures for ramp improvements
- Detour will re-route drivers via Broadway Exit and loop back on 7th Street

SB I-880 On-Ramp Detour



- Approximately 6 months to demolish and reconstruct retaining wall along SB I-880
- Detour will re-route drivers via 7th Street to Madison Street to 5th Street

Posey Tube Detour



- Nighttime and Weekend closures for structure demolition and traffic control set up
- Detour will re-route drivers via Lincoln Ave to Park Street to NB I-880 and exiting on Oak Street

Webster Tube Detour



- Nighttime closures for traffic control set up
- Detour will re-route drivers via SB I-880 to 23rd Street to Park Street to Lincoln Ave

Maintaining Pedestrian and Bike Mobility



- Temporary Pedestrian Paths during construction will provide protected walkways around the construction work zones



- When existing Class I, II and IV bike facilities are impacted by construction activities Class III bike routes will be provided

Project Schedule

Project Milestone	Schedule By Phase
Scoping	Summer 2009 - Spring 2011
Preliminary Engineering/Environmental	Fall 2017 to Early 2022
Final Design	February 2022 to Fall 2024
Project Advertisement/Bidding Process	Early 2022 to Fall 2024
Construction	Spring 2025 to Summer 2028

*Design has achieved 95% milestone and is progressing to 100%



Questions



Thank you!

