

# Annual Report on Transportation

January 2021

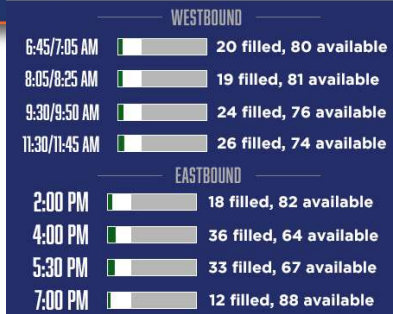


## Quick Facts: Transit

- **AC Transit:**
  - Ridership is 40% of pre-COVID
  - Received \$114 million in federal CARES Act
- **WETA:**
  - Ridership is 10% of pre-COVID
  - Received \$19 million

### HOW FULL ARE THE ALAMEDA/OAKLAND FERRIES?

Average daily ridership data for the week of December 21, 2020



Only peak directional trips are listed. Capacity based on smallest potential vessel used for each trip.

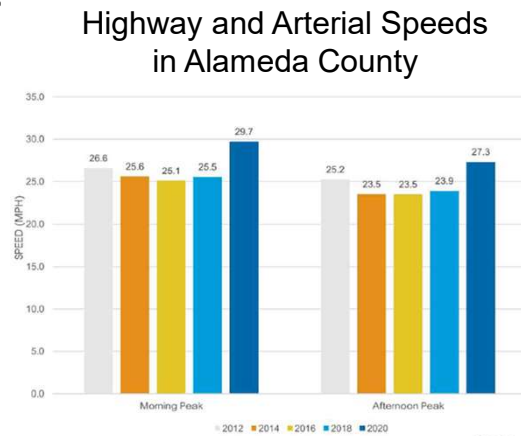


**San Francisco Bay Ferry**  
A SERVICE OF WETA



# Quick Facts: Roadways

- Alameda County Roadways:
  - Speeds are up, especially for freeways in the mornings
  - Delay is down
  - Vehicle miles traveled also are lower but not by much



3

# Quick Facts (cont.)

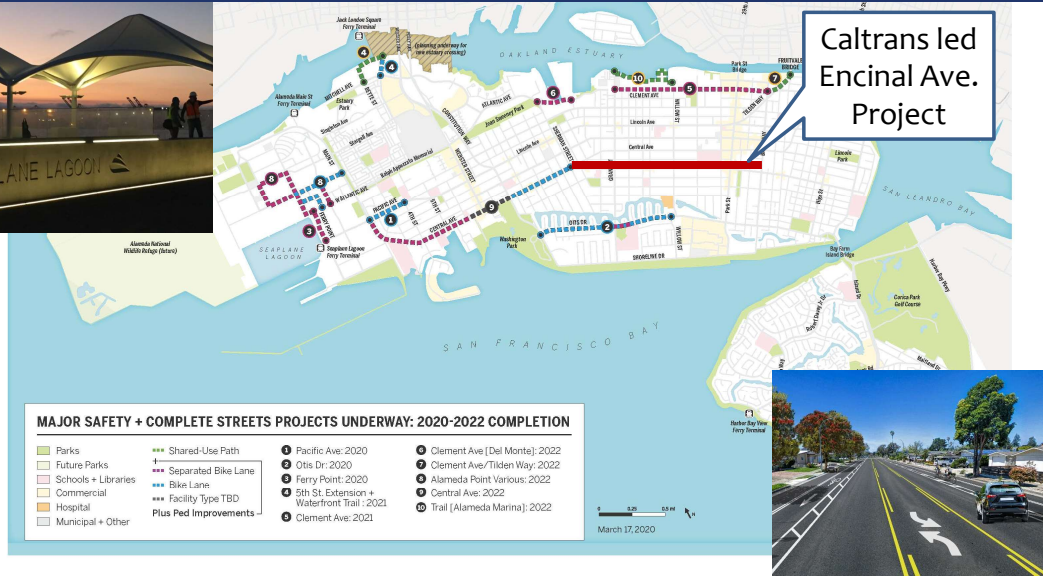
- 1.2 miles of bikeways (2020)
- Alameda Loop Shuttle and car share reduced usage
- Electric Vehicles in Alameda with rebates = 1,421
- Emergency Alert sign-ups = 12,000 (up from 1,400 in 2019)
- Measure B/BB/VRF revenues total over \$5 million annually



Traffic Fatalities and Severe Injuries			
	Average 2009-2018	2019	2020
All modes			
Killed	1.9	1	4
Severely injured	10	6	5
All injuries	222	273	167

4

# Status: Key Projects



# Status: Key Projects (cont.)

In 2020, completed between Alameda Point and Jean Sweeney Park



## Status: Key Projects (cont.)

- **Resurfacing** focus on central Alameda – Grand Street to receive federal OBAG grant
- **Paratransit** 2020 meal delivery and wellness checks; 2021 potential TNC on-demand door-to-door concierge service
- **Adaptation** project webpages:  
[www.alamedaca.gov/ShorelineWebsterPoseyTubes](http://www.alamedaca.gov/ShorelineWebsterPoseyTubes)  
[www.alamedaca.gov/ShorelineDoolittleDr](http://www.alamedaca.gov/ShorelineDoolittleDr)  
[www.alamedaca.gov/ShorelineVeteransCt](http://www.alamedaca.gov/ShorelineVeteransCt)



Street Selection Process



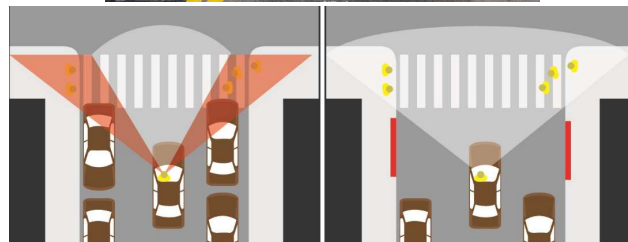
## Status: Key Projects (cont.)

- **Commercial/Slow Streets (COVID)**
  - To support businesses
    - Restriped Park Street/Webster Street
    - Closed Alameda Avenue near Park Street
  - To allow for more walking and bicycling
    - 4.5 miles of residential streets are closed to through traffic and more will be added in 2021
  - Council extended through October 2021
  - Webpages:  
[www.alamedaca.gov/CommercialStreets](http://www.alamedaca.gov/CommercialStreets)  
[www.SlowStreetsAlameda.org](http://www.SlowStreetsAlameda.org)



## Status: Key Projects (cont.)

- Vision Zero Projects
  - Post-collision visits and communications
  - Intersection Safety (8 corridors in 2021)
  - COVID-19 Get Around Safe Pledge:  
[www.alamedapledge.org](http://www.alamedapledge.org)



9

Source: SFMTA

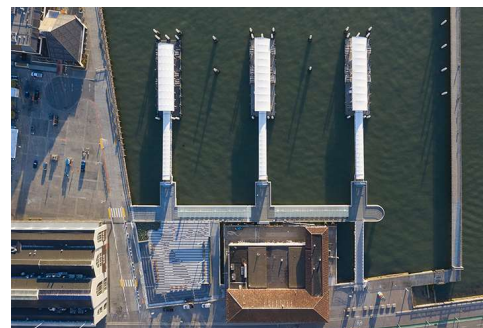


## Status: Transit

- AC Transit
  - Service Recovery Plan
    - Outreach: Early/Mid 2021
    - Decision-making: Fall 2021
    - Implementation: December 2021
- WETA
  - Service openings and frequency on a month-by-month basis
  - Main Street Terminal Refurbishment



SERVICE RECOVERY UPDATE



# Status: Planning Efforts



- Vision Zero: Draft Plan in early 2021  
[www.AlamedaCA.gov/VisionZero](http://www.AlamedaCA.gov/VisionZero)
- ATP: Draft Plan in mid 2021  
[www.ActiveAlameda.org](http://www.ActiveAlameda.org)
- West End Bicycle and Pedestrian Bridge – seek funding for studies
- Smart City Master Plan (1 year effort)
- Roundabouts Analysis



## Annual Report on Transportation

January 2021

Gail Payne – [gpayne@alamedaca.gov](mailto:gpayne@alamedaca.gov)

