

# Rebuilding the Existing Supportive Housing at Alameda Point Site Plan

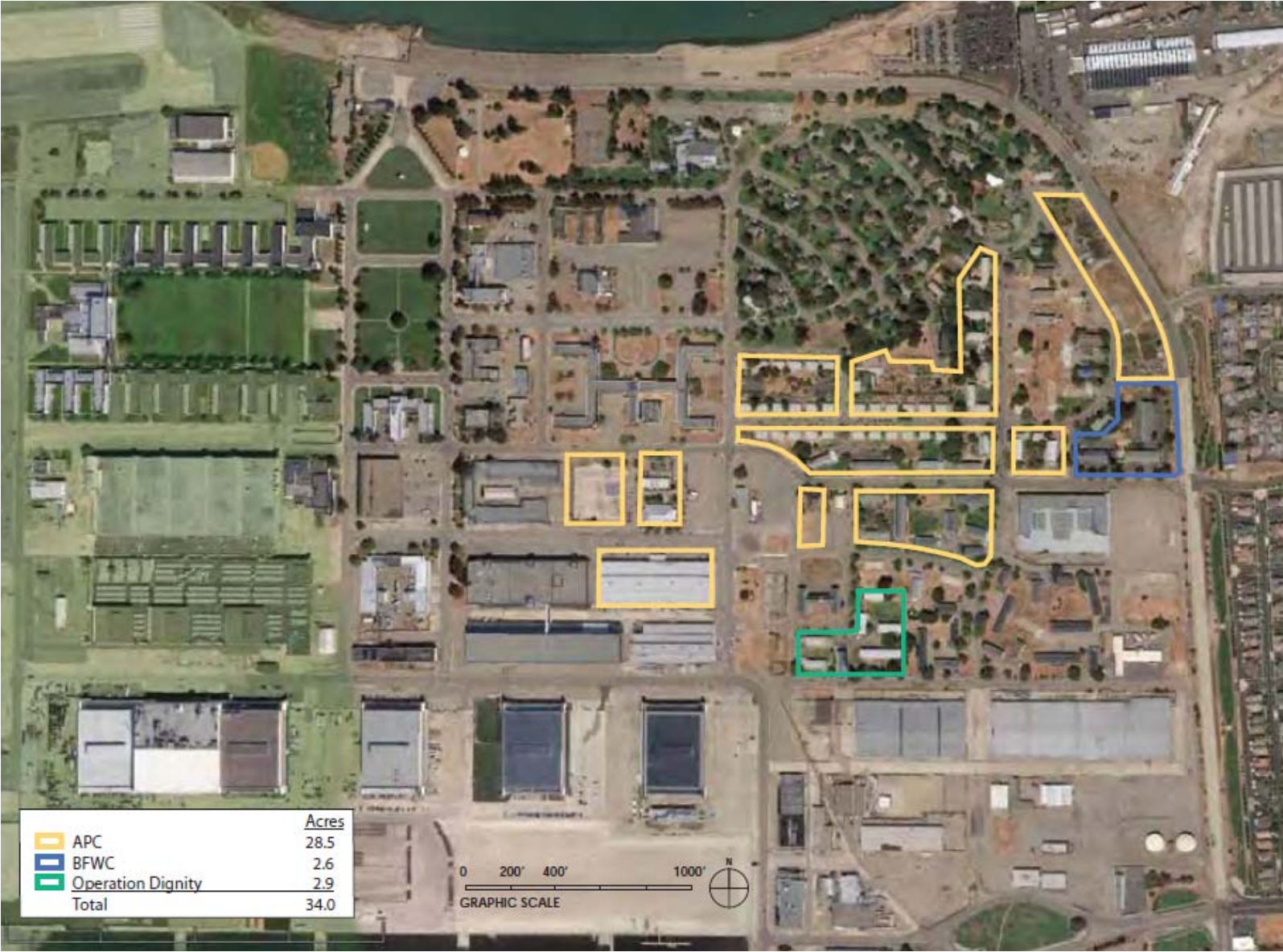


Planning Board Workshop #1

April 24, 2017



# Existing Supportive Housing at Alameda Point



# The Collaborating Partners

## Alameda Point Collaborative

- Provides housing to 350 formerly homeless residents, including 200 children and youth at Alameda Point
- Services include: life and job skills training, mental health counseling, workforce development programs

## Building Futures With Women and Children

- Provides 52 permanent homes at Bessie Coleman Court at Alameda Point
- Services include: domestic violence support groups, mental health counseling

## Operation Dignity

- Provides transitional and permanent housing to Veterans at Alameda Point
- Services include: employment search support, veteran peer support, assistance accessing VA benefits, connections to physical and mental healthcare.

## MidPen Housing Corporation

- Proven development track record having developed over 8,000 homes
- Professionally manage 95 properties with over 6,700 units providing affordable homes for 16,300 Northern California residents.

# Community & Site Planning Outreach Video



# Community Feedback

## *Housing Types*

- Variety of housing types to meet needs for family size, security, and accessibility
- Townhomes desired to allow for neighborhood interaction
- Ground floor entries and patios

## *Indoor Amenities*

- Multi-purpose community spaces
- Fitness Center
- Performance Spaces
- Teen Center and Senior Center

## *Outdoor Amenities*

- Picnic benches and outdoor seating
- Play Areas
- Basketball Court
- Community Gardens
- Dog park
- Street trees

## *Circulation*

- Street lighting
- Traffic calming measures
- Priority for people and bikes



# A Shared Vision: Collaborating Partners' Objectives

- Provide **high quality affordable housing** and **enriched supportive services** for formerly homeless families, veterans, and survivors of domestic violence.
- **Energize the Main Street Neighborhood**, replacing the current vacant and dilapidated structures with a **vibrant and active community**.
- Create **safe spaces for residents** who may have suffered from past traumas, while also providing **opportunities to connect to the Main Street Neighborhood**.



# High Quality Housing







# Dynamic Open Spaces



# Cultivating Community



# Enhancing the Urban Agriculture Character of the Main Street Neighborhood



# Site Context



# Proposed Site Plan

## LEGEND

-  3 STORY APARTMENTS - ALAMEDA POINT COLLABORATIVE
-  3 STORY APARTMENTS - OPERATION DIGNITY
-  3 STORY APARTMENTS - BUILDING FUTURES WITH WOMEN AND CHILDREN
-  2 STORY TOWNHOMES - ALAMEDA POINT COLLABORATIVE
-  SUPPORTIVE SERVICES SPACES
-  2 STORY BARN / COMMUNITY CENTER
-  PLAY AREA



# Schedule & Next Steps

- Tonight: Receive Planning Board's feedback regarding proposed site plan and additional information required for Development Plan review.
- May-July, 2017: Incorporate Planning Board's feedback in Development Plan
- July, 2017: Second Planning Board Workshop
- October, 2017: Planning Board Approval of Development Plan
- November/December, 2017: City Council Approval of Disposition and Development Agreement (DDA) and Development Plan

Questions?

