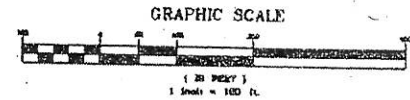


VICINITY MAP
NO SCALE

BOUNDARIES OF MAINTENANCE ASSESSMENT DISTRICT NO.1

CITY OF ALAMEDA, COUNTY OF ALAMEDA, STATE OF CALIFORNIA
DATE: MAY 2002 SCALE 1"=100'
BELLUCCI & ASSOCIATES, INC.
CONCORD



LEGEND

— BOUNDARY LINE OF PROPOSED MAINTENANCE ASSESSMENT DISTRICT NO.1

FOR THE PARTICULARS AND LINES OF DIMENSIONS OF THE ASSESSOR'S PARCEL NUMBERS REFERENCES IS MADE TO MARINA COVE TRACT MAP NO 7170 ON FILE WITH THE CITY ENGINEER, CITY OF ALAMEDA

FILED IN THE OFFICE OF THE CITY CLERK OF THE CITY OF ALAMEDA, STATE OF CALIFORNIA, THIS _____ DAY OF _____, 200__.

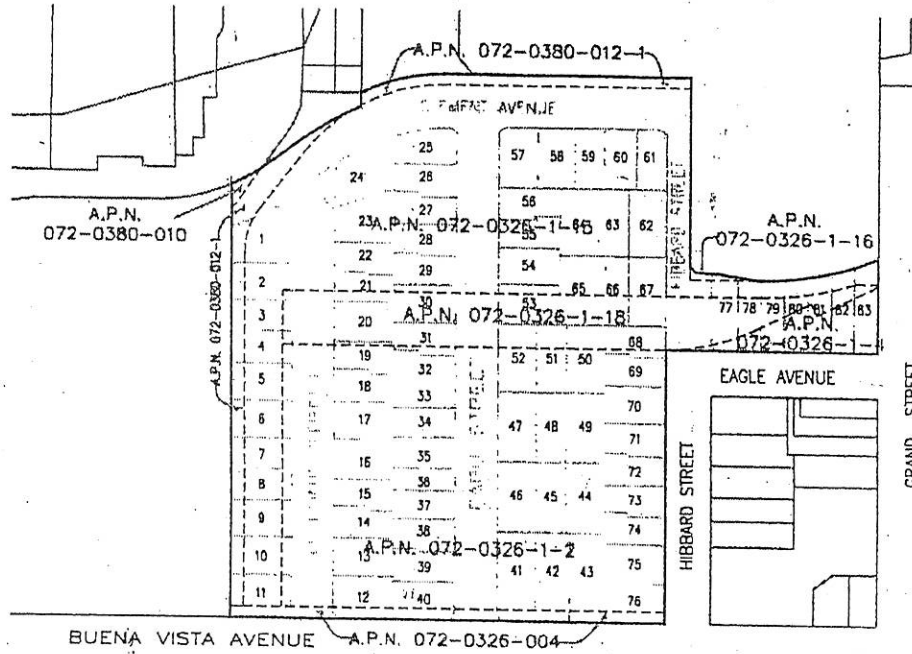
LARA WEISGER, CITY CLERK

I HEREBY CERTIFY THAT THE WITHIN MAP SHOWING PROPOSED BOUNDARIES OF CITY OF ALAMEDA MAINTENANCE ASSESSMENT DISTRICT NO. 1 (MARINA COVE TRACT 7170), COUNTY OF ALAMEDA, STATE OF CALIFORNIA, WAS APPROVED BY THE CITY COUNCIL OF THE CITY OF ALAMEDA AT A REGULAR MEETING THEREOF HELD ON THE DAY OF _____, 200__ BY ITS RESOLUTION NO. _____

LARA WEISGER, CITY CLERK

FILED THIS _____ DAY OF _____, 200__ AT THE HOUR OF _____ O'CLOCK _____ M., IN BOOK _____ OF MAPS OF ASSESSMENT AND COMMUNITY FACILITIES DISTRICTS AT PAGE _____ IN THE OFFICE OF THE COUNTY RECORDER IN THE COUNTY OF ALAMEDA, STATE OF CALIFORNIA.

COUNTY RECORDER
COUNTY OF ALAMEDA
STATE OF CALIFORNIA



TRACT 7170