

VICINITY MAP

1/4" = 1'-0"

3

PROJECT NAME: Holiday Inn Express, Alameda  
 PROJECT LOCATION: 1825 Park Street Alameda, CA 94501  
 ASSESSORS PARCEL #: 071-0198-009  
 ZONING DISTRICT: G-NP  
 OCCUPANCY / USE: R1 - RESIDENTIAL - hotels (transient)  
 CONSTRUCTION TYPE: V-A  
 NO. OF STORIES: 4 STORIES  
 HEIGHT: 50' MAX. REQUIREMENT  
 TOP OF ROOF = 45'-6"  
 TOP OF PARAPET = 49'-6"  
 TOP OF TOWER = 54'-6"  
 FRONT SETBACK: 0'  
 SIDE/REAR SETBACKS: 3'-0"  
 FIRE SPRINKLERS: YES  
 FIRE ALARM: YES

PROJECT DATA

12" = 1'-0"

2

HOTEL SUMMARY:

LEVEL	GROSS AREA	RM COUNT
GROUND	10,031 SF	-
LEVEL 2	14,242 SF	32
LEVEL 3	14,242 SF	32
LEVEL 4	14,242 SF	32
TOTAL:	52,757 SF	96

AUTO PARKING SUMMARY:

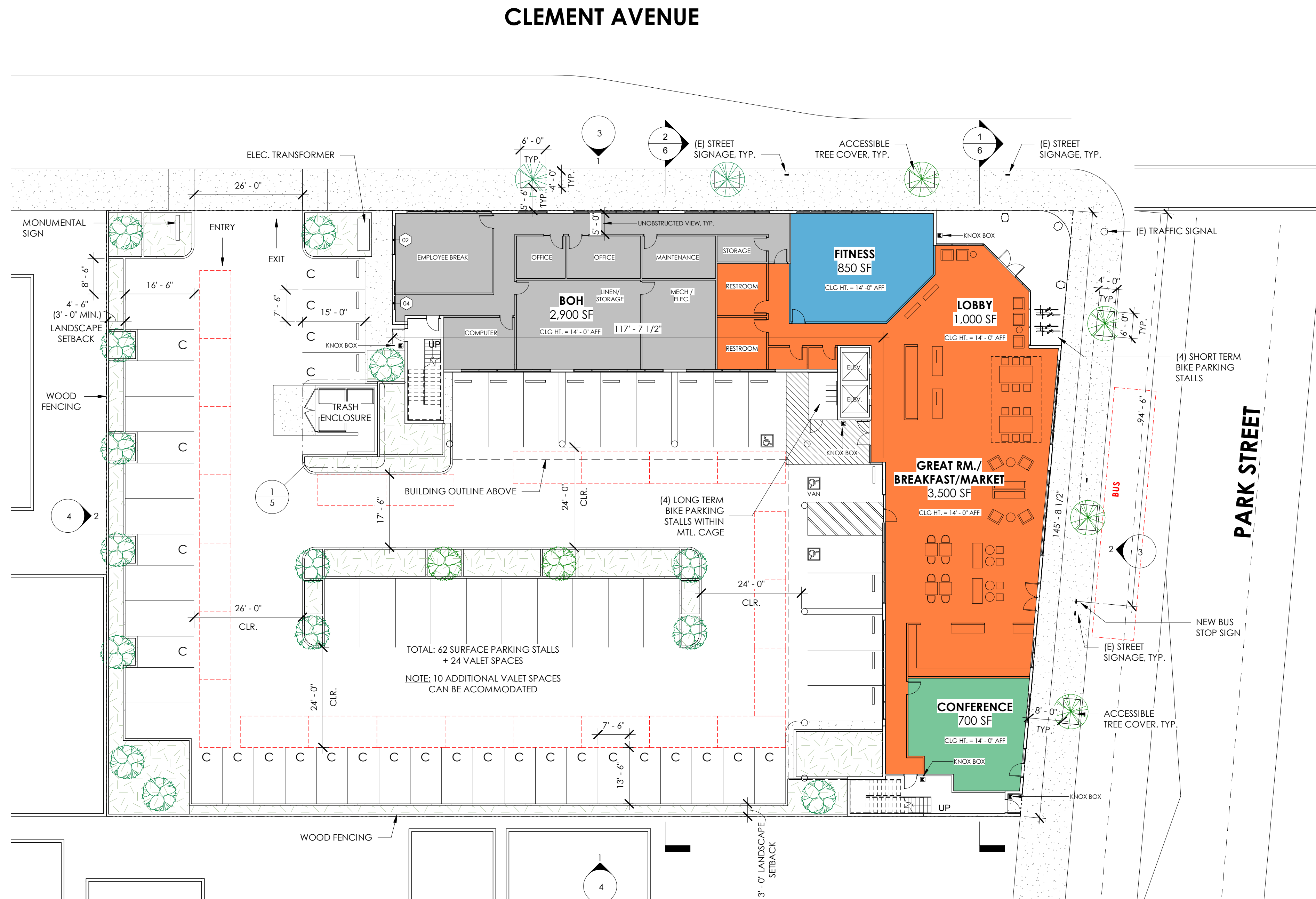
REQUIRED:	= 96 (1 STALLS PER ROOM)
PROPOSED	= 62 (0.65 STALLS PER ROOM) 34 STANDARD, 3 ACCESSIBLE, 25 COMPACT SPACES + 24 VALET SPACES

BIKE PARKING SUMMARY:

REQUIRED (SHORT TERM):	= 2% OF MAX DAILY ATTENDANCE = 4 (192 GUESTS)
REQUIRED (LONG TERM):	= 1 PER 25 ROOMS (2 MIN.) = 4 (96 RM'S)
PROPOSED	= LONG TERM MTL. CAGE ENCLOSURE TO ACCOMMODATE 4 BIKES PARK STREET BIKE RACK TO ACCOMMODATE 4 BIKES

PROGRAM DATA

1/4" = 1'-0"



NOTE: SEE CIVIL AND LANDSCAPE DRAWINGS FOR ADDITIONAL INFO.

PROPOSED SITE PLAN / GROUND FLOOR PLAN



1/16" = 1'-0"

1



# Holiday Inn Express Alameda

1825 Park Street Alameda, CA 94501

1