



CITY OF ALAMEDA EMERGENCY OPERATIONS CENTER

1809 GRAND STREET, ALAMEDA CA.

BRW PROJECT NO. 213091.00
03/5/2014



OWNER

CITY OF ALAMEDA
CITYHALL, 2263 SANTA CLARA AVENUE
ALAMEDA, CA. 94501

ROBERT HAUN, PROJECT MANAGER
(510) 747-7979

ARCHITECT

BROWN REYNOLDS WATFORD ARCHITECTS, INC.
1620 MONTGOMERY ST. SUITE 320
SAN FRANCISCO, CA 94111

CHRIS FORD, PRINCIPAL
(415) 749-2670

CIVIL ENGINEER

SANDIS
1721 BROADWAY, STE 201
OAKLAND, CA. 94612

JEFF SETERA, PRINCIPAL
(510) 590-3402

LANDSCAPE ARCHITECT

PGA DESIGN
444 17 STREET
OAKLAND, CA. 94612

CHRIS PATILLO, PRINCIPAL
(510) 550-8855

CODE INFORMATION

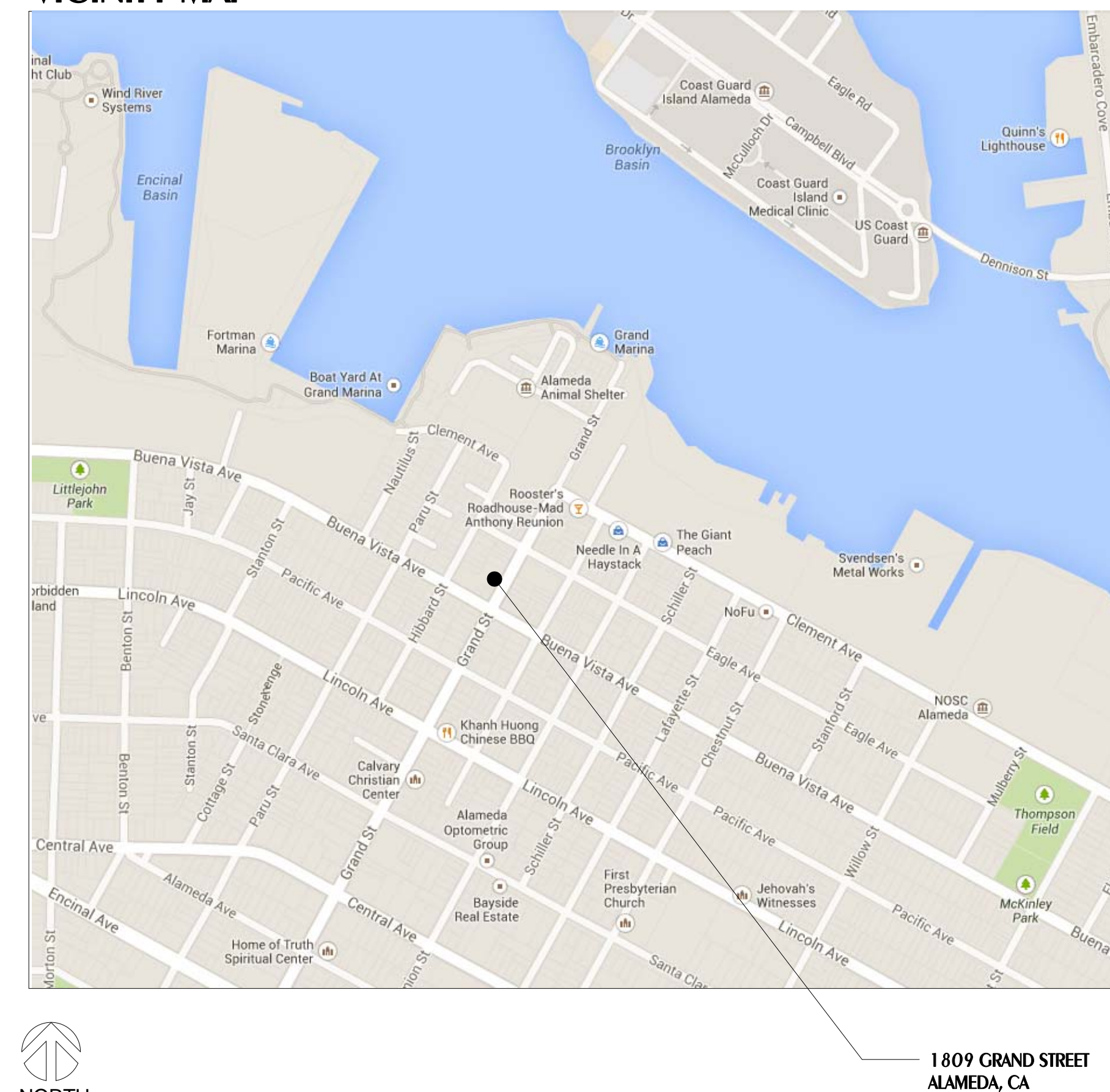
BUILDING	2013 CALIFORNIA BUILDING CODE
MECHANICAL	2013 CALIFORNIA MECHANICAL CODE
PLUMBING	2013 CALIFORNIA PLUMBING CODE
ELECTRICAL	2013 CALIFORNIA ELECTRIC CODE
FIRE	2013 INTERNATIONAL FIRE CODE
GREEN	2013 CALIFORNIA GREEN BUILDING CODE

SCOPE OF WORK: NEW BUILDING, PARKING, AND LANDSCAPING
 NUMBER OF FLOORS: TWO
 CONSTRUCTION TYPE: TYPE V-B
 OCCUPANCY CLASSIFICATION: A-3
 SPRINKLERED: YES
 GROSS AREA: 4,440 SF
 BUILDING HEIGHT: 30' - 0"

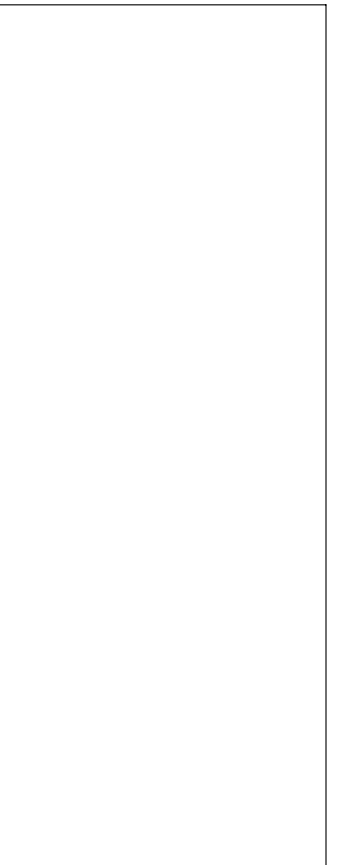
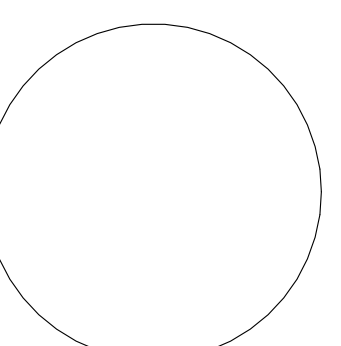
INDEX OF DRAWINGS

A1.0	SITE PLAN
A1.1	FLOOR PLANS
A2.1	ELEVATIONS
A2.2	ELEVATIONS
A2.3	FACADE DETAILS
L1.0	LANDSCAPE PLANS AND DETAILS

VICINITY MAP



SCHEMATIC DESIGN

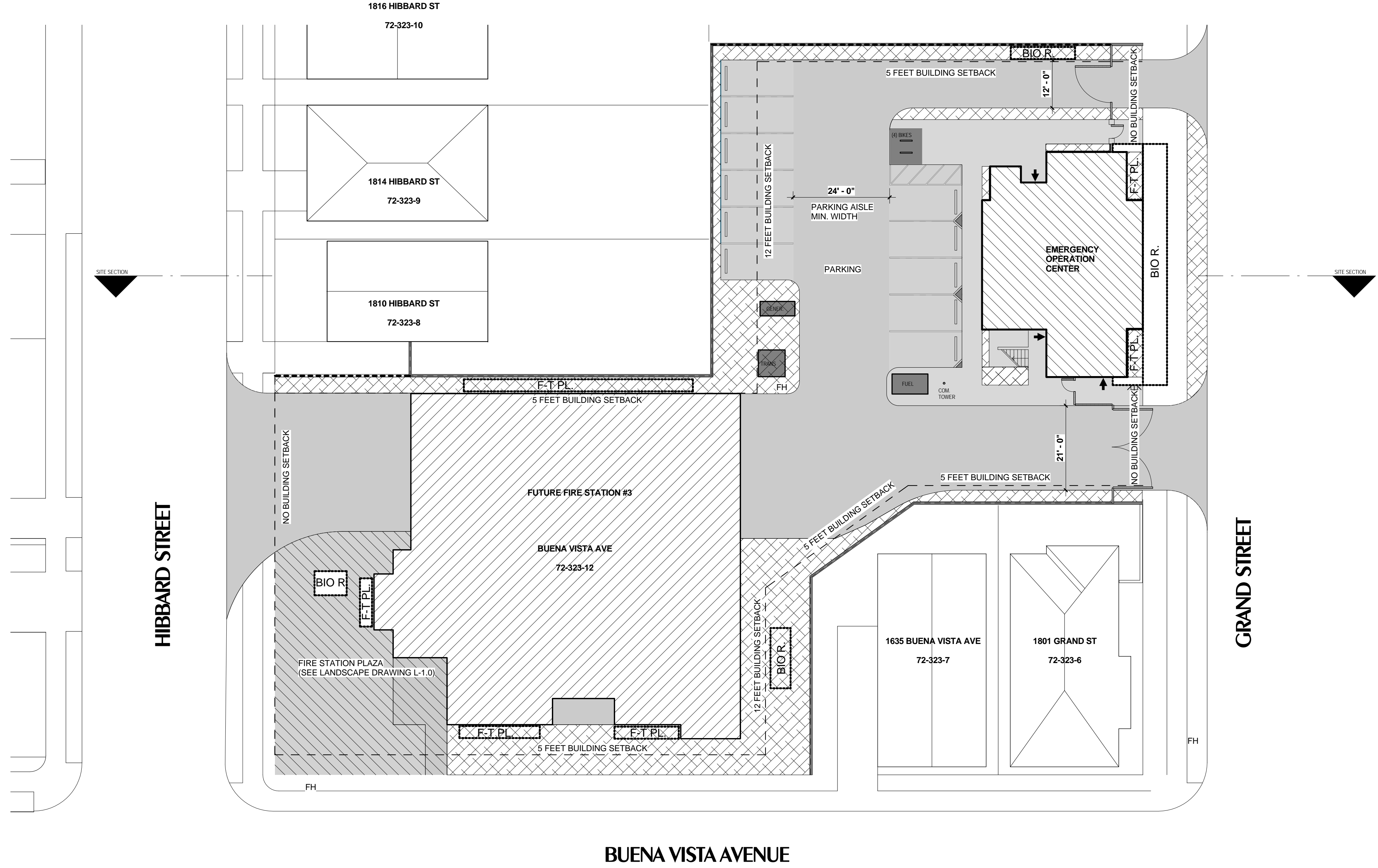
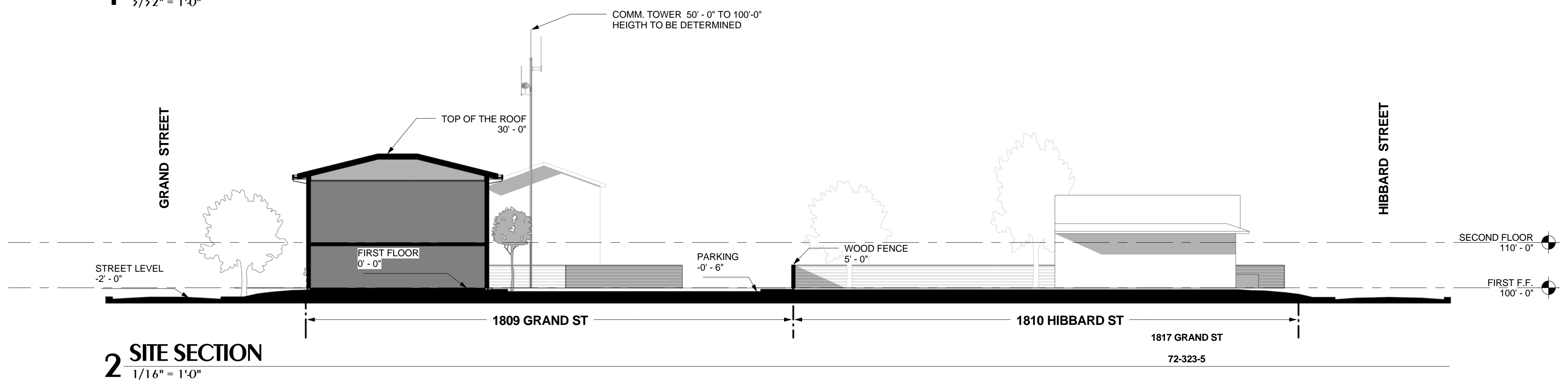
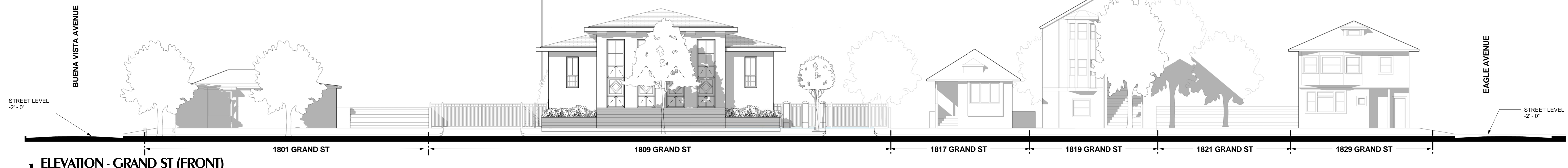


COPYRIGHT © 2014
 BROWN REYNOLDS WATFORD ARCHITECTS, INC.
 DATE 03/5/2014
 DRAWN BY RFU
 CHECKED BY YJK
 BRW PROJECT NUMBER 213091.00

CITY OF ALAMEDA
 EMERGENCY OPERATIONS CENTER
 1809 GRAND STREET, ALAMEDA CA.

A0.1

TITLE SHEET AND DRAWING INDEX



PROJECT DESCRIPTION

THE NEW CITY OF ALAMEDA EMERGENCY OPERATION CENTER (EOC) WILL SERVE AS THE PRIMARY SUPPORT FACILITY FOR THE OPERATIONS MANAGEMENT AND RESPONSE COORDINATION FOR ALL MAJOR PUBLIC SAFETY INCIDENTS. LOCATED IN THE STRATEGIC CENTER OF THE ISLAND, THE FACILITY WILL ACCOMMODATE THE COLLABORATION BETWEEN THE CITY OF ALAMEDA EMERGENCY SERVICE PERSONNEL INCLUDING FIRE, POLICE, PUBLIC WORKS, CITY MANAGER'S OFFICE AND OTHER CITY DEPARTMENTS AS NEEDED. THE TWO STORY STRUCTURE INCLUDES A PRIMARY MEETING SPACE THAT HAS BEEN DESIGNED AS A LARGE GATHERING SPACE FOR UP TO 50 EMERGENCY RESPONSE PERSONNEL, SUPPORTING THIS PRIMARY SPACE WILL BE A DISASTER PREPAREDNESS OFFICE, A SECONDARY COMMUNICATIONS AND CONFERENCE ROOM, AN INDEPENDENT COMMUNICATIONS/EQUIPMENT ROOM, AND RESTROOMS WITH SHOWERS. THE TWO-STORY FACILITY WILL BE FULLY ADA ACCESSIBLE WITH AN ELEVATOR SERVING THE UPPER FLOOR AND WILL HAVE DEDICATED OFF-STREET PARKING. THE BUILDING DESIGN WILL COMPLY WITH THE STRINGENT EARTHQUAKE RESISTANCE CODE REQUIREMENTS FOR AN ESSENTIAL SERVICE FACILITY AND WILL BE SERVED BY DIESEL POWERED GENERATOR TO MAINTAIN CONTINUAL OPERATION. THE TOTAL INDOOR AREA IS 3,610 SQUARE FEET OF INTERIOR AREA.

ZONING

30-4.10 C-M, COMMERCIAL-MANUFACTURING DISTRICT

ADJACENT ZONES

M-1, R-3, R-4-PD

LOT AREA

LOT # 72-323-12
TOTAL AREA 25,085 SF (0.58 AC)
TOTAL PERIMETER 792 LF

STRUCTURE FOOTPRINT

EOC FOOTPRINT 1,990 SF
FS #3 FOOTPRINT 6,745 SF

FLOOR AREA OF EOC AND FS #3

EOC 3,640 SF
FS #3 8,860 SF

SETBACKS AND LIMITS

FRONT 1: NO SETBACK
FRONT 2: NO SETBACK
REAR: 12'-0"
SIDES: 5'-0"
FLOOR TO AREA RATIO: NO RESTRICTION
HEIGHT LIMIT: 100'-0"

AVERAGE LOT SLOPE

FLAT

LAND USE

EXISTING: PARKING / STORAGE
NEW: PUBLIC SAFETY OPERATIONS

PARKING

EXISTING: NONE
NEW: BASED ON PUBLIC SAFETY OPERATIONS

SITE AREA CALCULATION

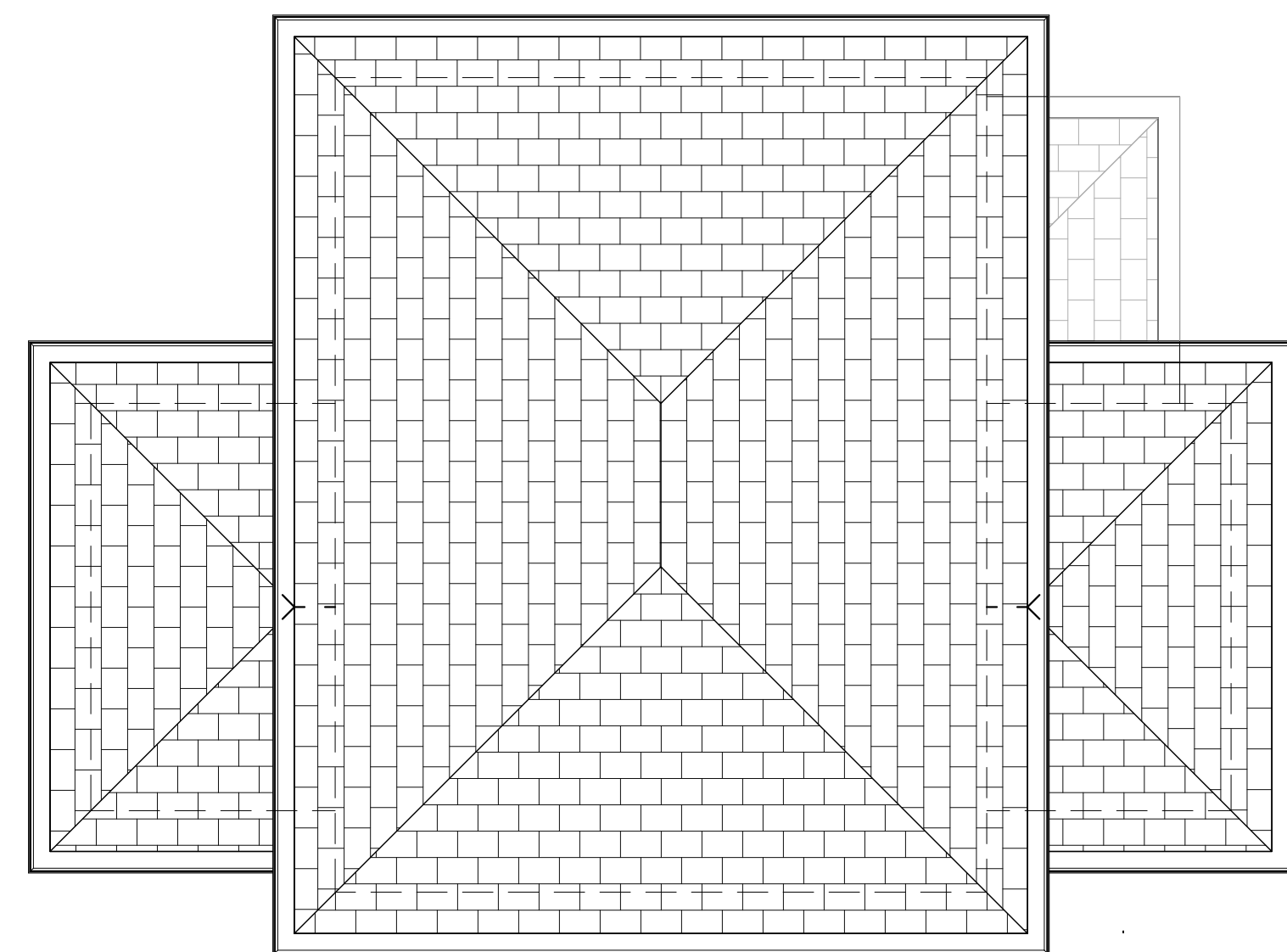
BUILDING FOOTPRINT	1,990 SF
BUILDING FOOTPRINT STATION 3	6,745 SF
HARDSCAPE	12,080 SF
LANDSCAPE - BIO R. & PLANTERS	710 SF
LANDSCAPE	3,670 SF

SYMBOL LEGEND

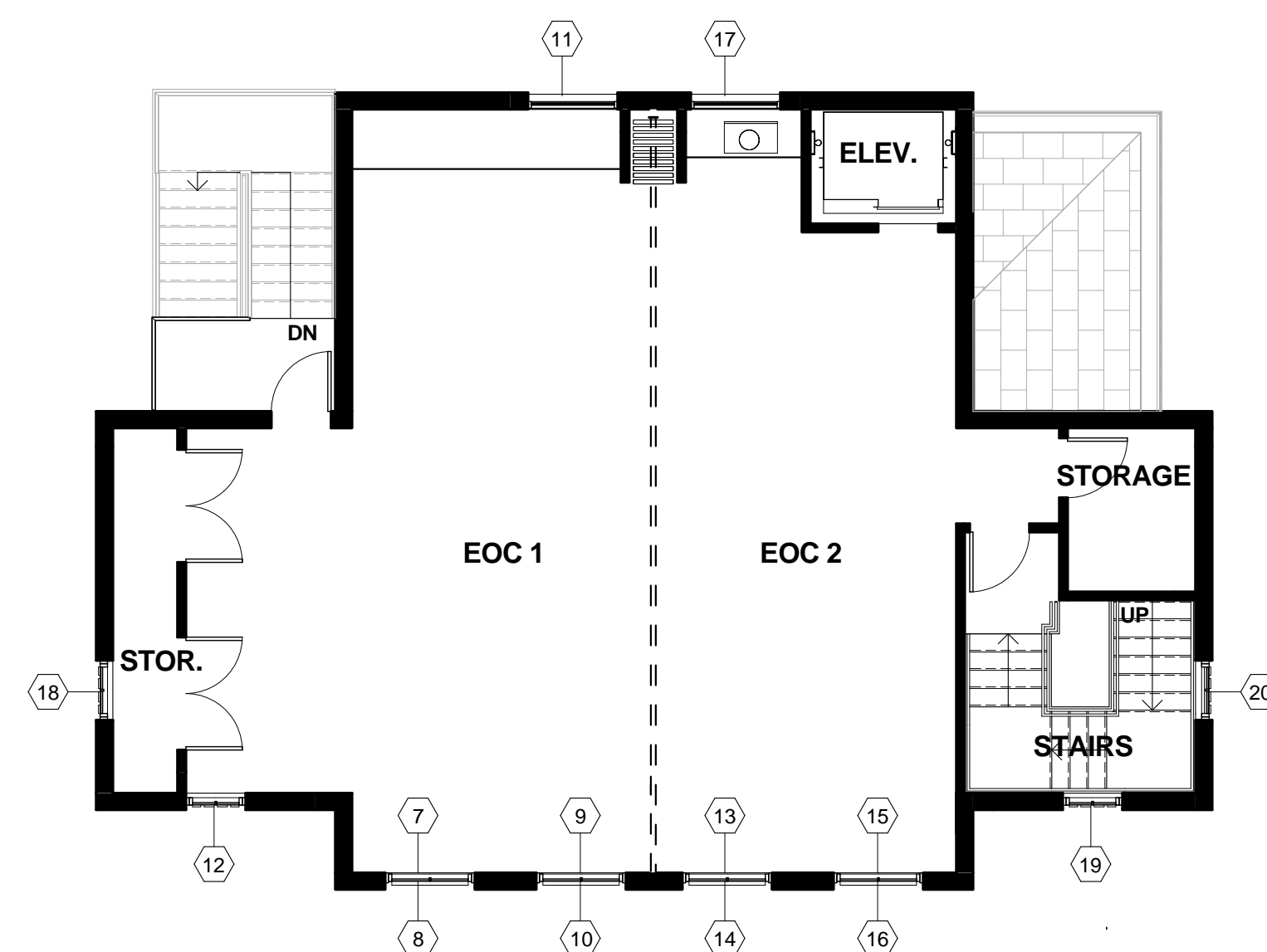
- NORTH ARROWS
- PLAN TRUE
- PROPERTY LINE
- FIRE HYDRANT
- BUILDING SETBACK LINE/EASEMENT
- BUILDING ACCESS
- NEW DEVELOPMENT - EMERGENCY OPERATING CENTER
- FUTURE DEVELOPMENT - FIRE STATION #3
- FUTURE DEVELOPMENT - FIRE STATION PLAZA
- WOODEN FENCE
- NEW WOODEN FENCE
- NEW WROUGHT IRON FENCE AND GATES
- CONCRETE PAVING
- CONCRETE SIDEWALK
- LANDSCAPE - SEE L1.0 SHEET
- BIO RETENTION - SEE L1.0 SHEET
- FLOW-THROUGH PLANTER - SEE L1.0 SHEET

COPYRIGHT © 2017
BROWN REYNOLDS WARFORD ARCHITECTS, INC.
DATE 07/07/2014
DRAWN BY RPU
CHECKED BY VUK
BRW PROJECT NUMBER 217091.00

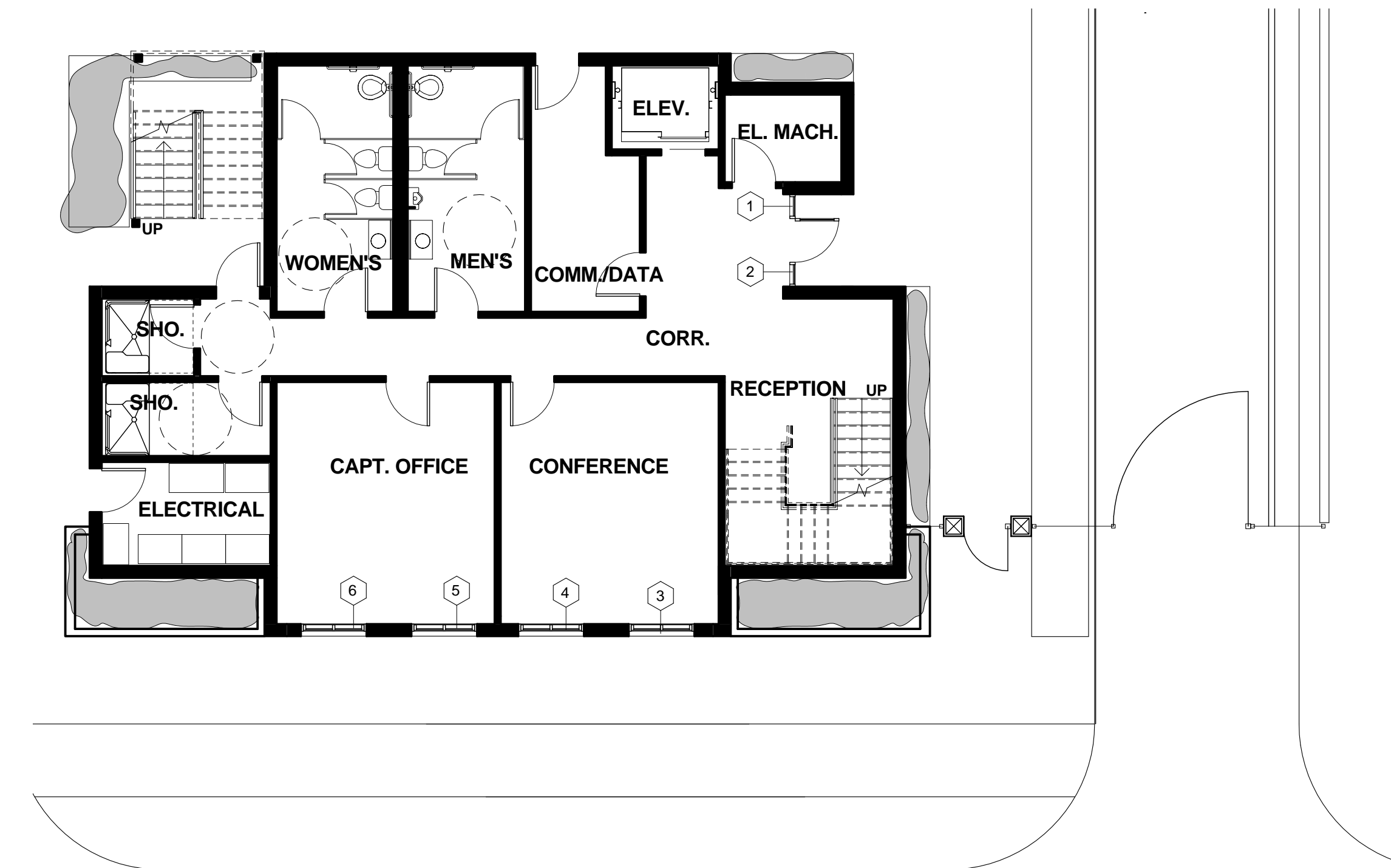
CITY OF ALAMEDA
EMERGENCY OPERATIONS CENTER
PROJECT NO. 023114
1809 GRAND STREET, ALAMEDA, CA



3 ROOF PLAN
 1/8" = 1'-0"
 0 4' 8' 16'




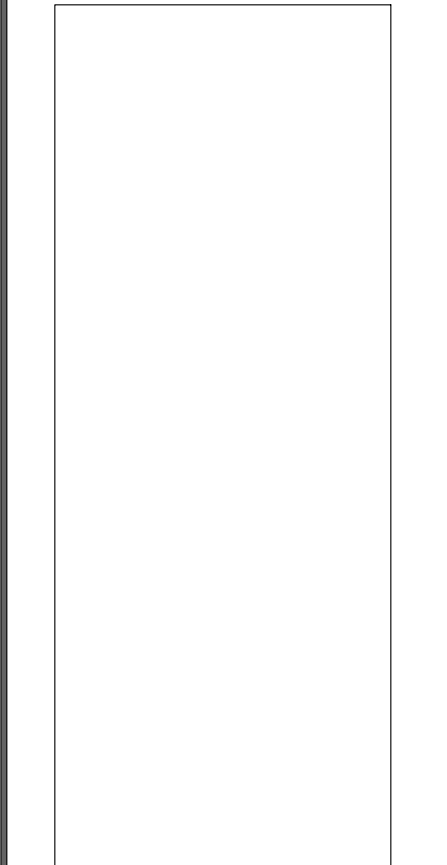
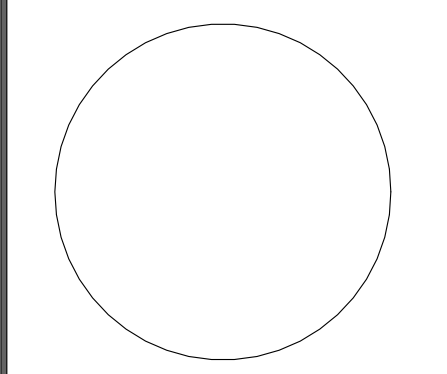
2 SECOND FLOOR
 1/8" = 1'-0"
 0 4' 8' 16'



1 FIRST FLOOR
 1/8" = 1'-0"
 0 4' 8' 16'

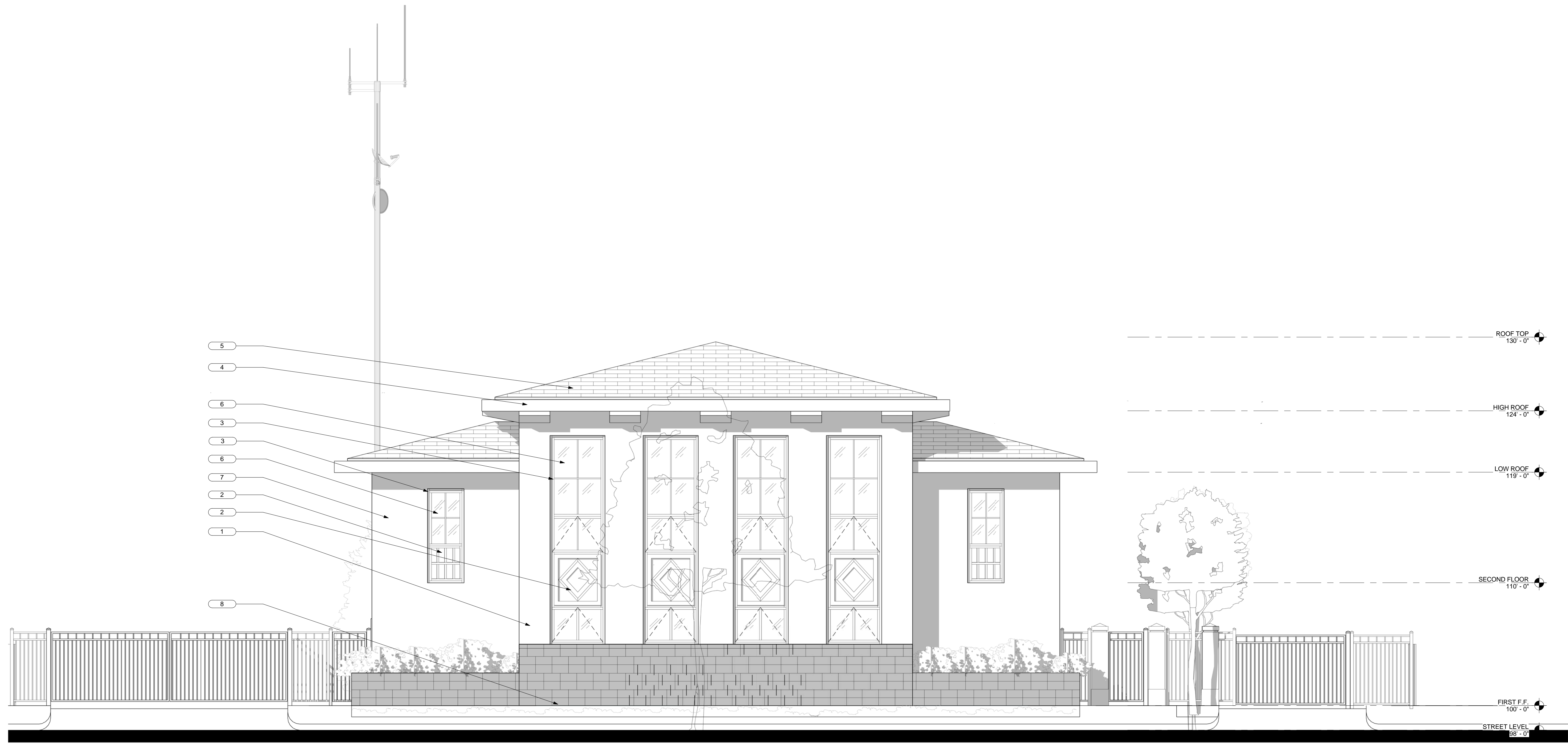
COPYRIGHT © 2014
 BROWN REYNOLDS WATFORD ARCHITECTS, INC.
 DATE 07/17/2014
 DRAWN BY RPU
 CHECKED BY VUK
 BRW PROJECT NUMBER 213091.00

CITY OF ALAMEDA
 EMERGENCY OPERATIONS CENTER
 PROJECT NO. 023114
 1809 GRAND STREET, ALAMEDA, CA




COPYRIGHT © 2014
 BROWN REYNOLDS WATFORD ARCHITECTS, INC.
 DATE 07/7/2014
 DRAWN BY RPU
 CHECKED BY VUK
 BRW PROJECT NUMBER 213091.00

CITY OF ALAMEDA
 EMERGENCY OPERATIONS CENTER
 PROJECT NO. 023114
 1809 GRAND STREET, ALAMEDA, CA



1 ELEVATION - GRAND ST (FRONT)
 1/4" = 1'-0"

MATERIAL KEYNOTES

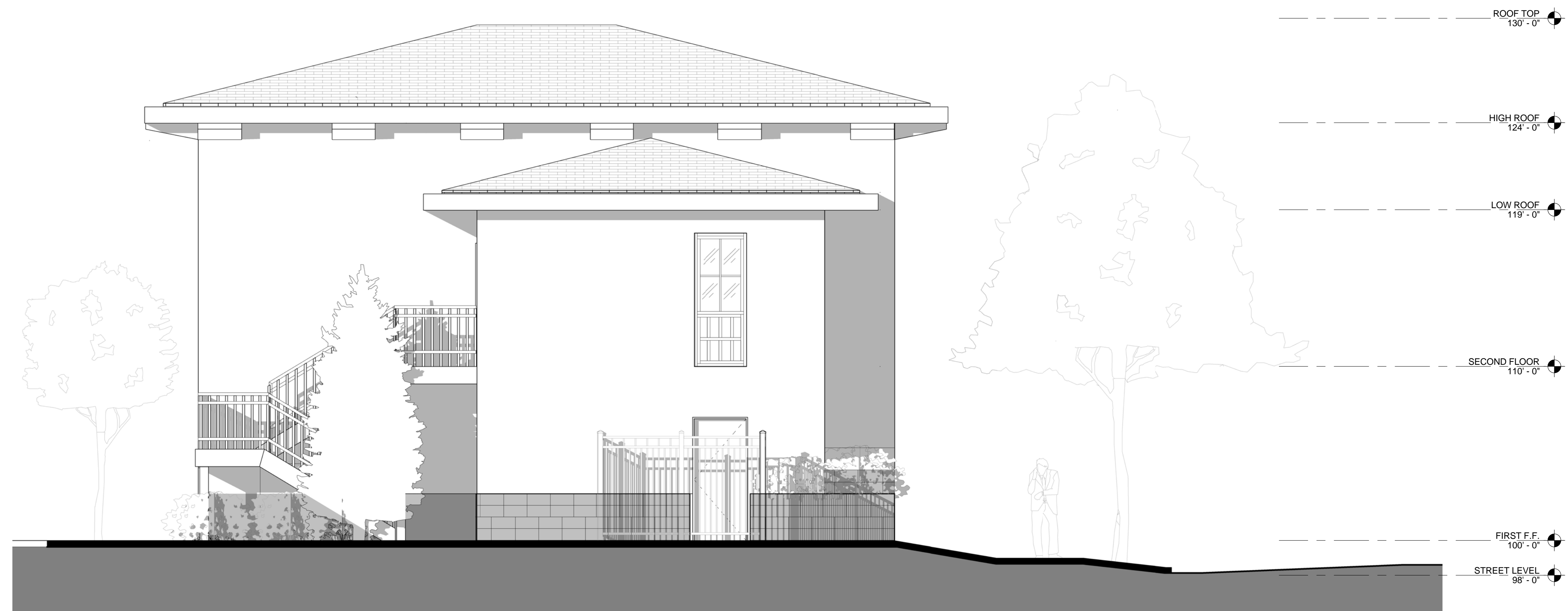
- 1 PLASTER FACADE PAINTED WITH COLOR #1
- 2 FORMED METAL PANEL
- 3 ALUMINUM FRAMING COLOR #3 WITH SATIN FINISH
- 4 FORMED STEEL CORNICE AND DENTAL
- 5 CONCRETE ROOF TILES
- 6 WINDOW/DOOR GLAZING
- 7 PLASTER FACADE PAINTED WITH COLOR #2
- 8 QUARRY STONE BASE TILE/BUSH HAMMER FINISH AND ROCK PITCHED FINISH



2 ELEVATION (RIGHT)
 1/4" = 1'-0"




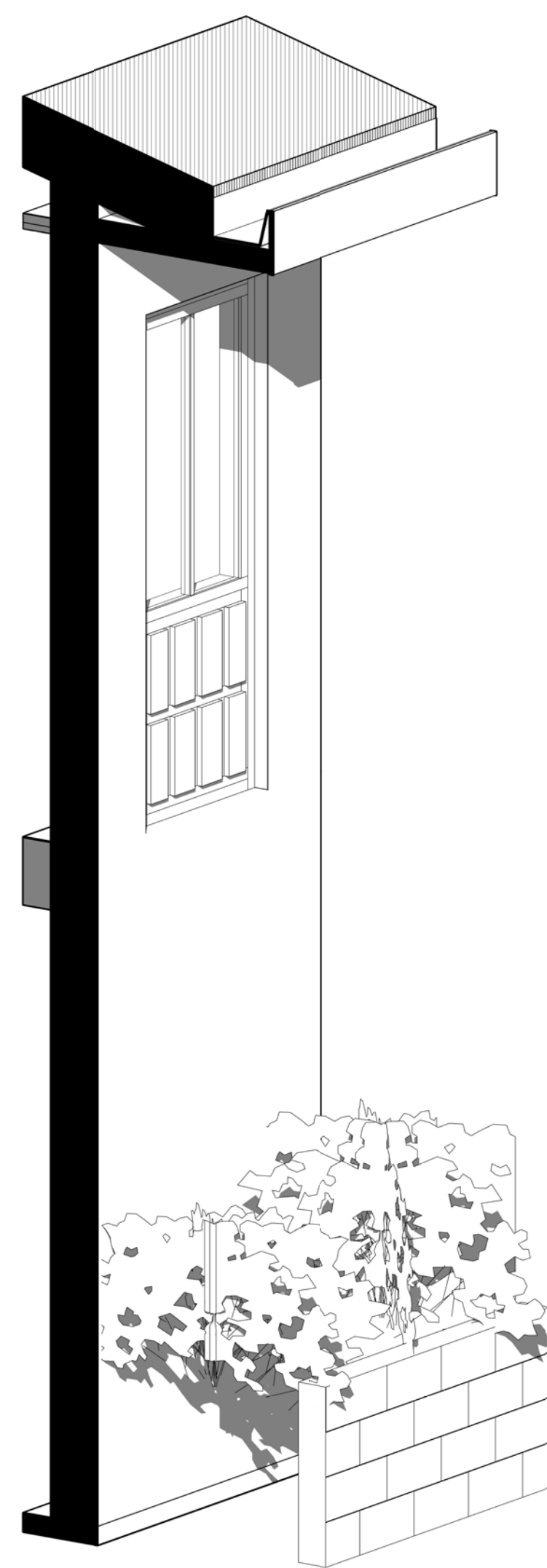
1 ELEVATION (BACK)
1/4" = 1'-0"



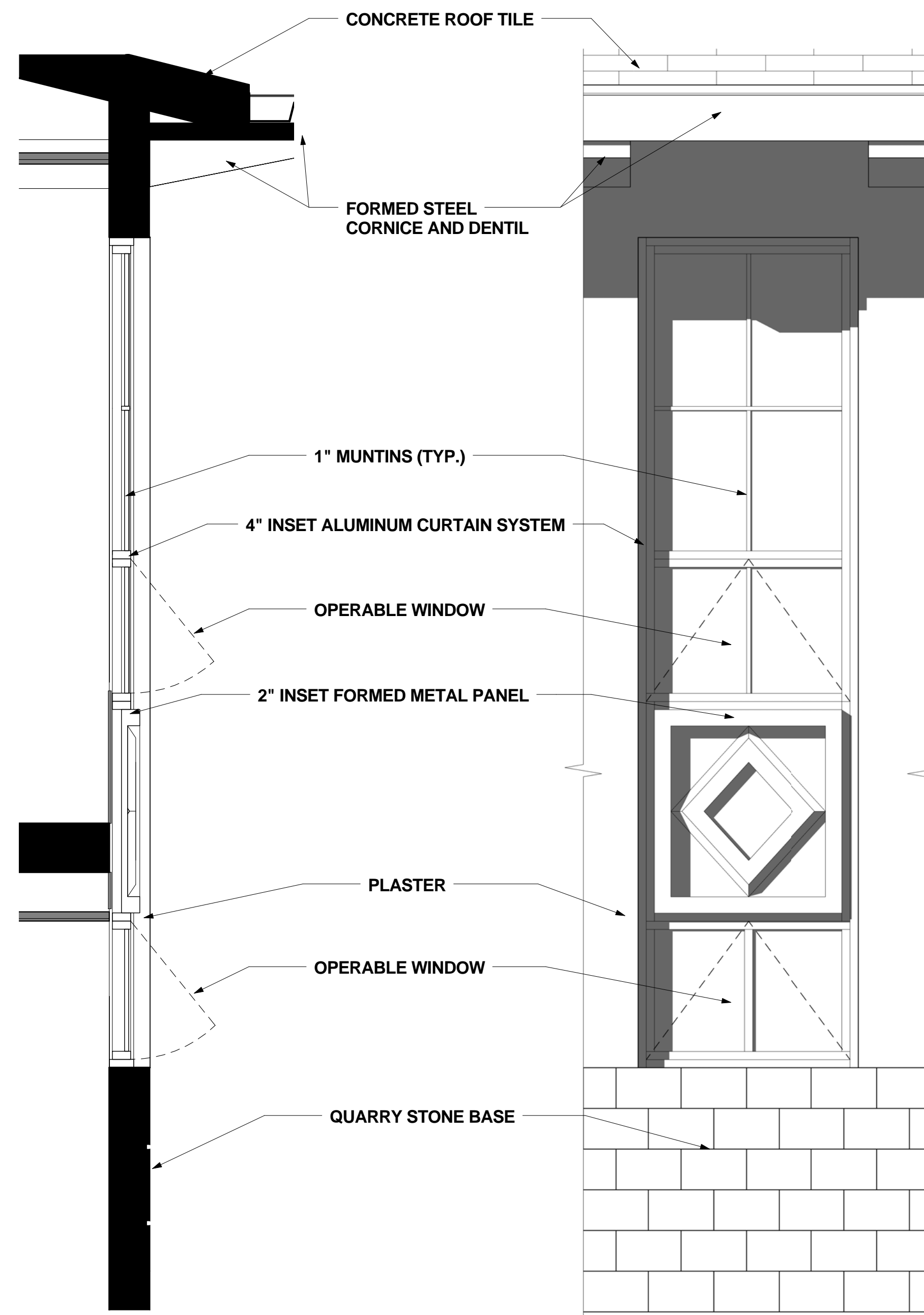
2 ELEVATION (LEFT)
1/4" = 1'-0"

COPYRIGHT © 2014
BROWN REYNOLDS WAIFORD ARCHITECTS, INC.
DATE 07/17/2014
DRAWN BY RPU
CHECKED BY VUK
BRW PROJECT NUMBER 213091.00

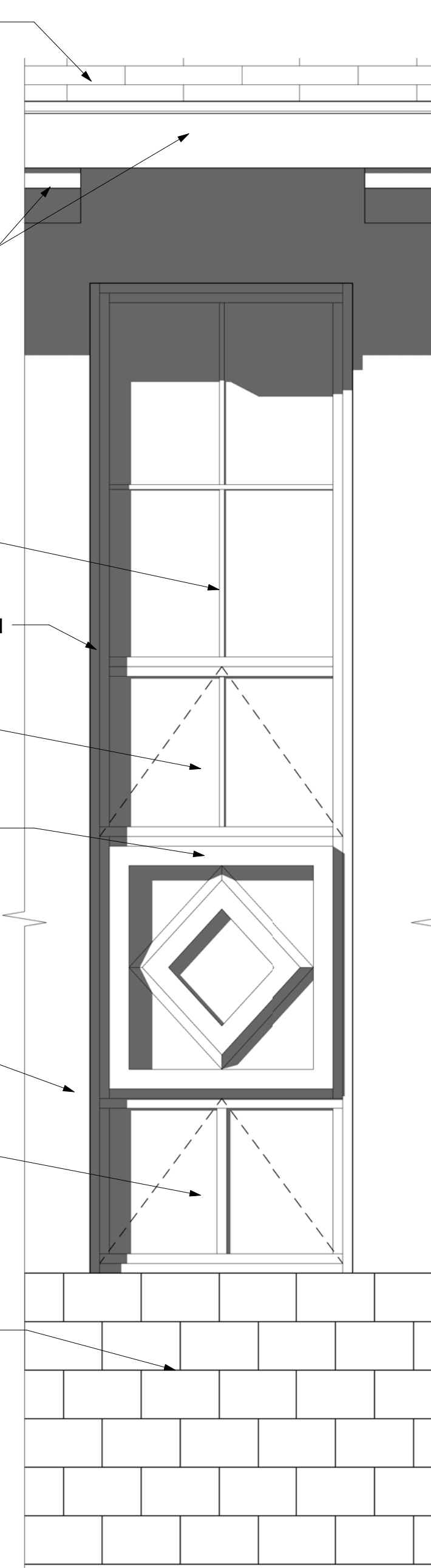
CITY OF ALAMEDA
EMERGENCY OPERATIONS CENTER
PROJECT NO. 0231114
1809 GRAND STREET, ALAMEDA, CA




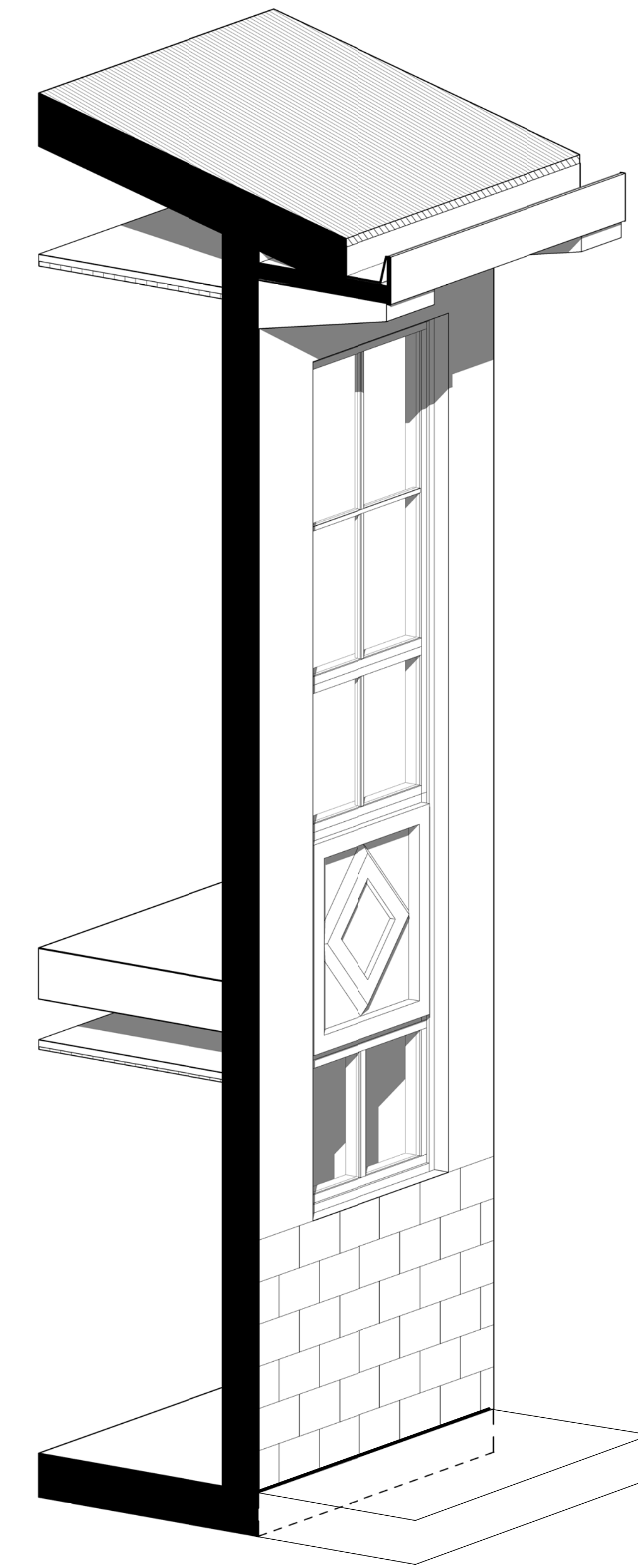
4 3-D FACADE DETAIL-WINDOW



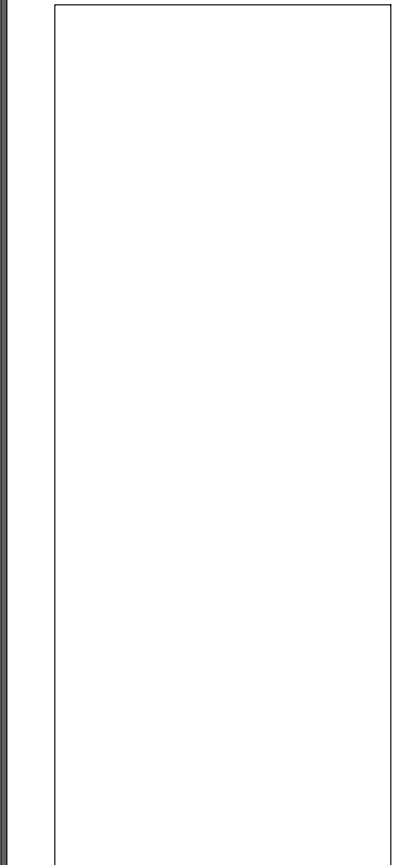
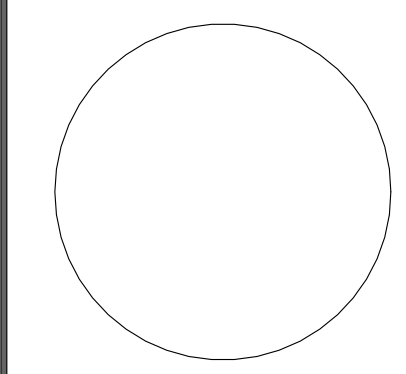
3 ENLARGED MAIN FACADE SECTION
1/2" = 1'-0"



2 ENLARGED ELEVATION
1/2" = 1'-0"

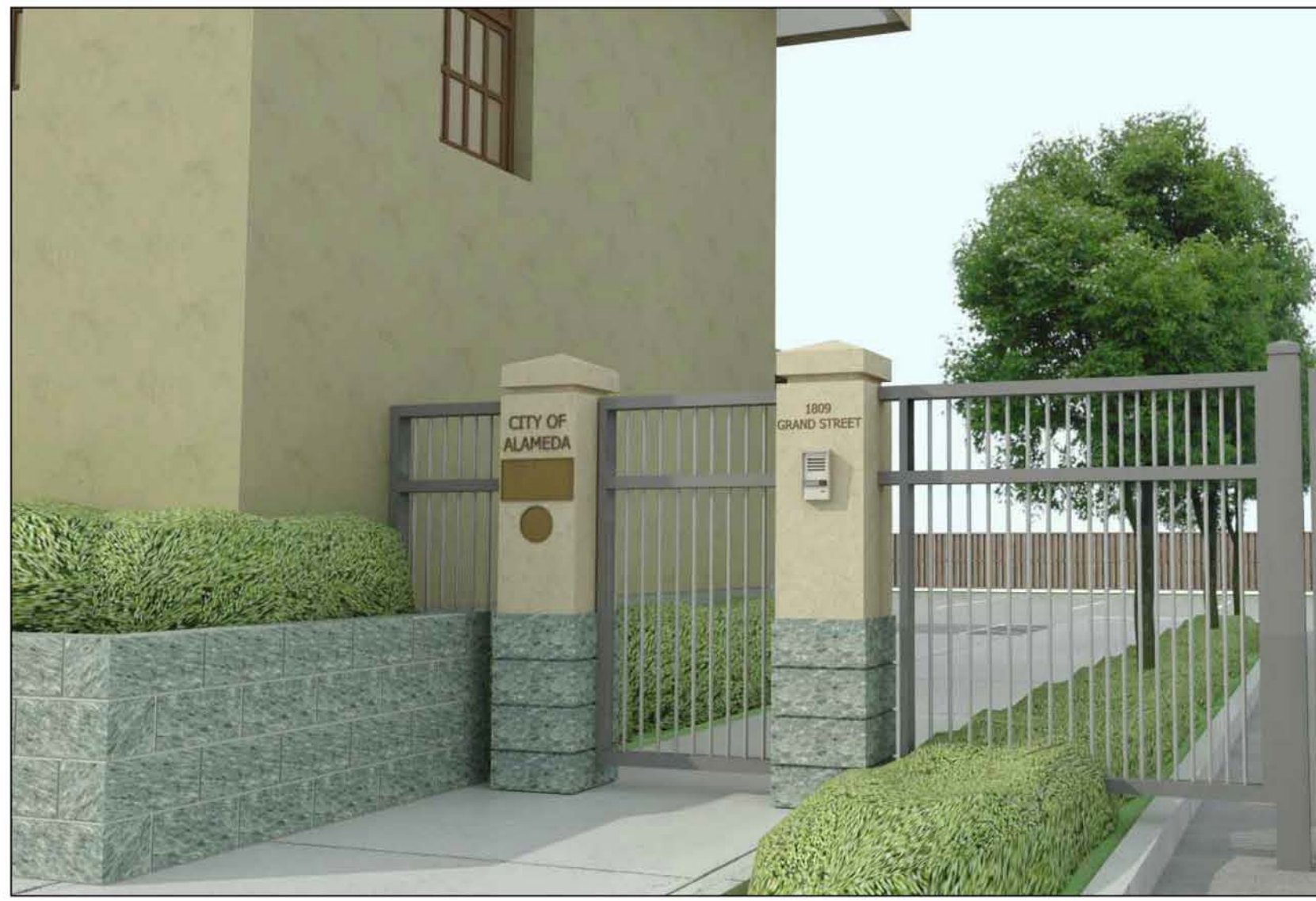


1 3-D FACADE DETAIL



COPYRIGHT © 2014
BROWN REYNOLDS WAITFORD ARCHITECTS, INC.
DATE 07/17/2014
DRAWN BY RPU
CHECKED BY VUK
BRW PROJECT NUMBER 213091.00

CITY OF ALAMEDA
EMERGENCY OPERATIONS CENTER
PROJECT NO. 023114
1809 GRAND STREET, ALAMEDA, CA



EOC PEDESTRIAN GATE



WOOD FENCE TO REPLACE (E) CHAIN LINK FENCE



SEAT WALL EXAMPLE

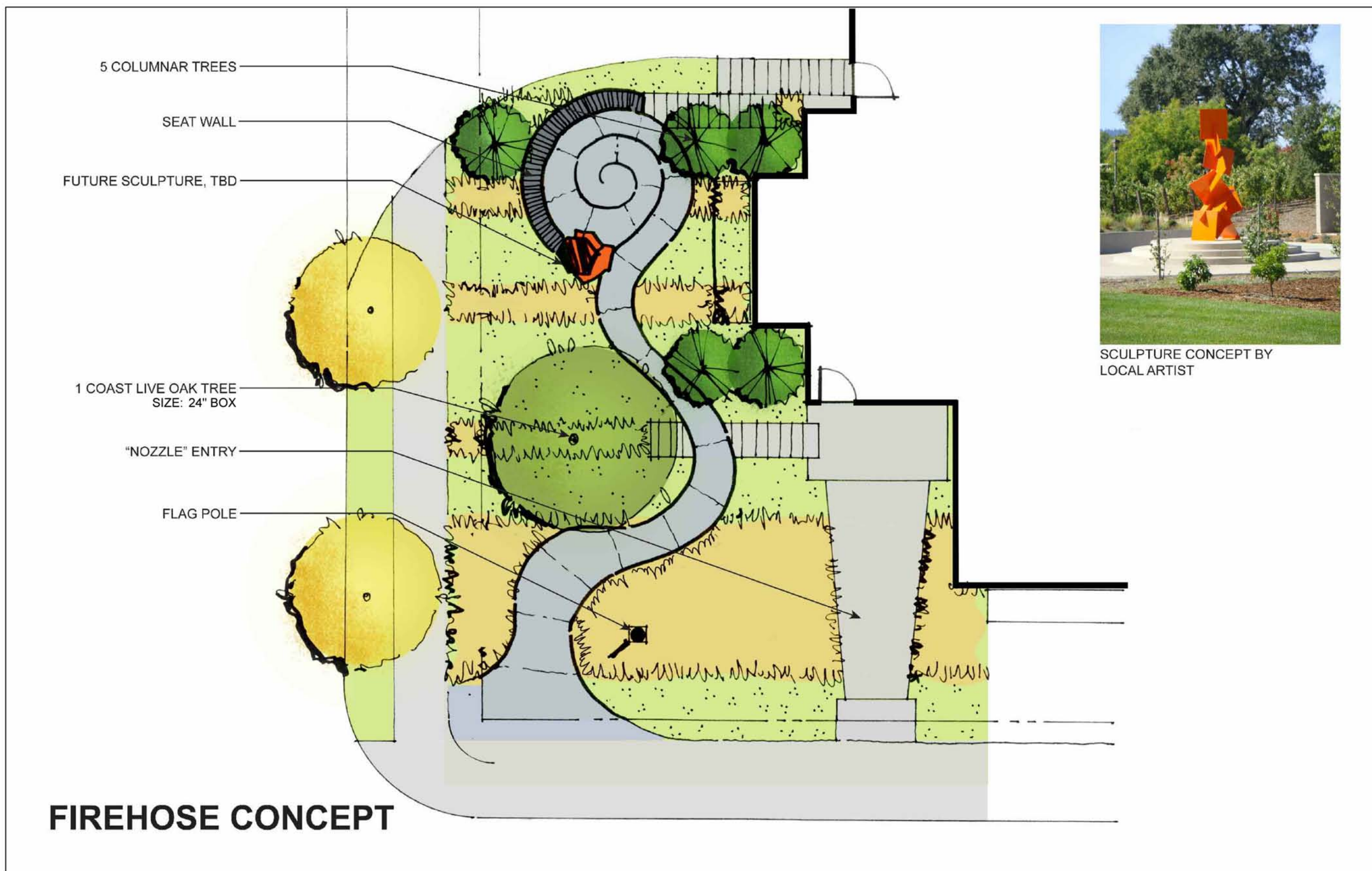


1 PLANTING PLAN
SCALE: 1/16" = 1'-0"



PRELIMINARY PLANT LIST

SYMBOL	BOTANICAL NAME	COMMON NAME
TREES		
	ACER RUBRUM 'OCTOBER GLORY'	OCTOBER GLORY RED MAPLE
	CARPINUS BETULUS 'FASTIGIATA'	COLUMNAR HORNBEEAM
	PISTACIA CHINENSIS 'KEITH DAVEY'	KEITH DAVEY PISTACHIO
	QUERCUS AGRIFOLIA	COAST LIVE OAK
	TRISTANIOPSIS LAURINA	WATER GUM
	ULMUS AMERICANA 'JEFFERSON'	AMERICAN ELM
SHRUBS, GROUNDCOVERS AND GRASSES		
	AGAPANTHUS 'PETER PAN'	AGAPANTHUS
	ARCTOSTAPHYLOS DENSIFLORA 'HOWARD MCMINN'	MANZANITA 'HOWARD MCMINN'
	ARCTOSTAPHYLOS HOOKERI 'WAYSIDE'	WAYSIDE MANZANITA
	MIX OF ASPIDISTRA ELATIOR AND TRACHELOSPERMUM JASMINOIDES	CAST IRON PLANT AND STAR JASMINE
	COLEONEMA PULCHRUM	BREATH OF HEAVEN
	MIX OF CONVULVULUS CNEORUM AND DIETES GRANDIFLORA 'VARIEGATA'	MIX OF BUSH MORNING GLORY AND STRIPED FORTNIGHT LILY
	GALVEZIA SPECIOSA 'FIRECRACKER'	ISLAND BUSH SNAPDRAGON
	NANDINA DOMESTICA 'GULF STREAM'	GULF STREAM HEAVENLY BAMBOO
	BIO R - MIX OF BIOFILTRATION PLANTS	
	F-T PL - MIX OF BIOFILTRATION PLANTS	



2 FIREHOSE CONCEPT
SCALE: N.T.S.



SCULPTURE CONCEPT BY LOCAL ARTIST



ACER RUBRUM 'OCTOBER GLORY'



CARPINUS BETULUS 'FASTIGIATA'



QUERCUS AGRIFOLIA



PISTACIA CHINENSIS 'KEITH DAVEY'



TRISTANIOPSIS LAURINA



ULMUS AMERICANA 'JEFFERSON'



BIOFILTRATION PLANTS EXAMPLE



AGAPANTHUS 'PETER PAN'



ARCTOSTAPHYLOS DENSIFLORA 'HOWARD MCMINN'



ARCTOSTAPHYLOS HOOKERI 'WAYSIDE'



ASPIDISTRA ELATIOR



COLEONEMA PULCHRUM



CONVOLVULUS CNEORUM



DIETES GRANDIFLORA 'VARIEGATA'



GALVEZIA SPECIOSA 'FIRECRACKER'



NANDINA DOMESTICA 'GULF STREAM'



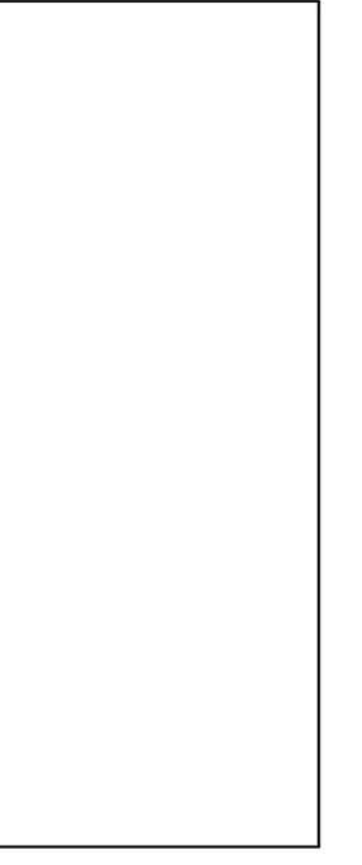
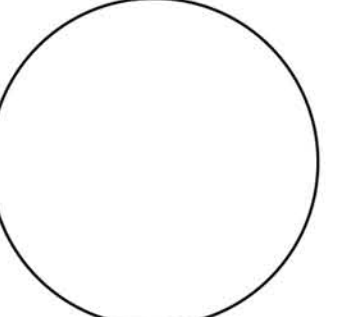
TRACHELOSPERMUM JASMINOIDES



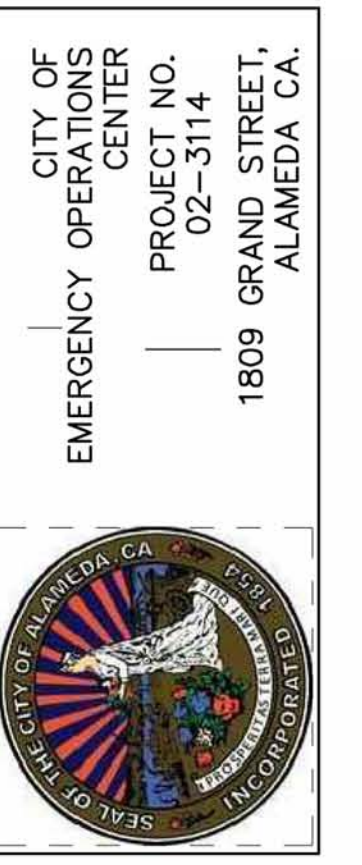
TRACHELOSPERMUM JASMINOIDES



PGA design
LANDSCAPE ARCHITECT
444 17th Street
Oakland CA 94612
T 510 465 1284
F 510 465 1256



2014
COPYRIGHT © 2014
PGA design, INC.
DATE 03/07/2014
DRAWN BY KF
CHECKED BY CP
DATE 03/07/2014
PROJECT NO. 02-3114
1809 GRAND STREET, ALAMEDA, CA.
BRW PROJECT 213091.00



L1.0

CONCEPTUAL PLANTING PLAN