



# ALAMEDA LANDING FRAMEWORK PLAN





## **ALAMEDA LANDING WATERFRONT**

*Alameda Landing will provide more than a half mile of public waterfront and open space along the Estuary.*



## **ALAMEDA LANDING WATERFRONT**

*The Fifth Street Corridor and Plaza will have a visual connection with Jack London Square and Downtown Oakland.*



## FIFTH STREET PLAZA

*The Fifth Street Plaza will be a vibrant community gathering place on the water, and the launch point for Alameda Landing's water shuttle.*



## TURNING BASIN PARK

*The Turning Basin Park will provide a neighborhood-scaled open space with dramatic views of the San Francisco skyline, Bay Bridge and Port of Oakland.*



## **ALAMEDA LANDING PROMENADE**

*The Alameda Landing Promenade will be 100 feet in width and more than 1,000 feet long featuring a series of waterfront-oriented activities.*



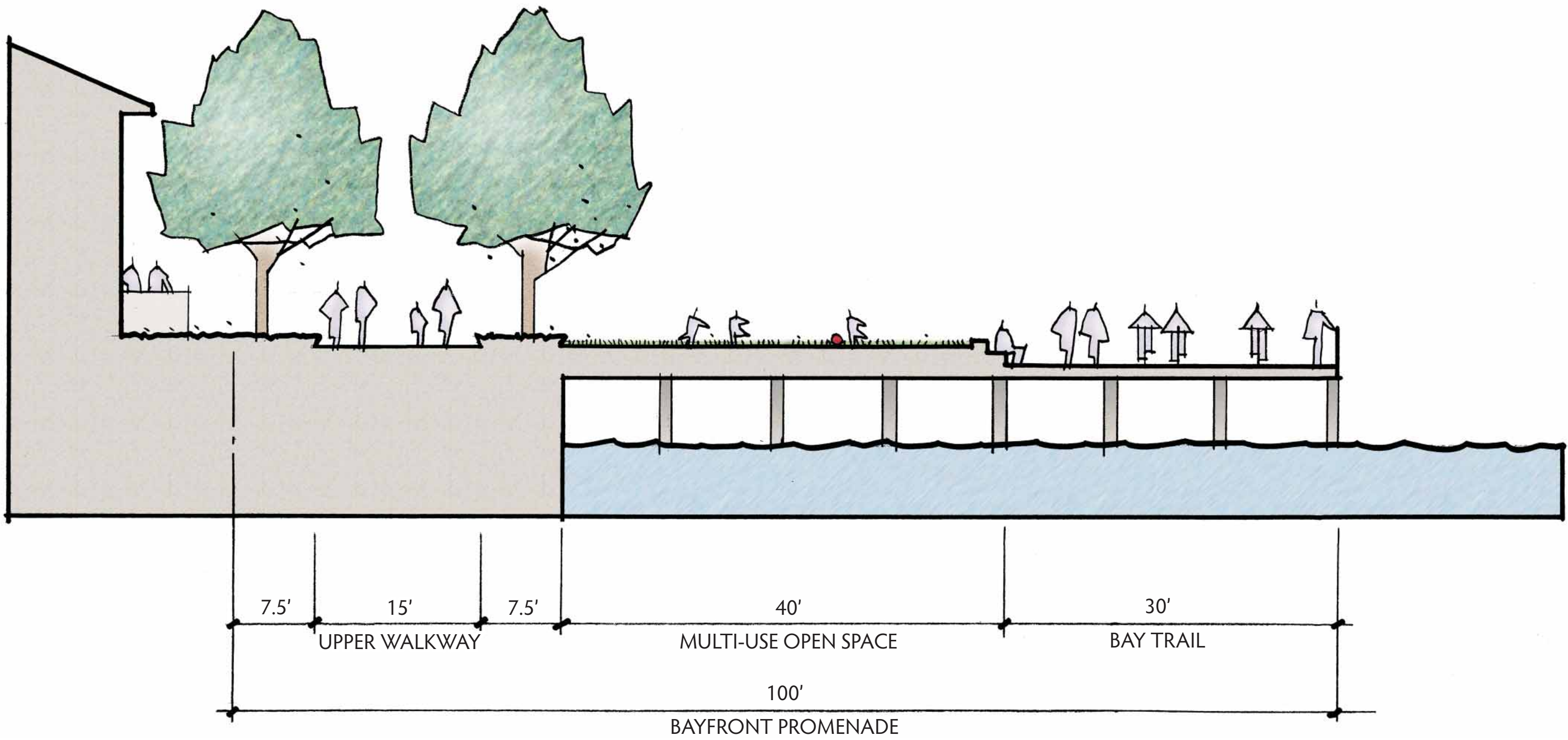
**LEGEND**

- Apartments
- Condominiums
- Hotel
- Restaurant/Retail
- Ground Level Retail / Restaurant/ Work Space

BLOCK	Commercial			Residential			On-Site Residential Parking	Assignment of Commercial Parking
	Retail (sq ft)	Office/Work (sq ft)	Hotel (sq ft)	Hotel keys	DU	Bedrooms		
11	3,500	5,500	0	0	20	46-58	38	20
12	5,500	0	0	0	0	0	0	48
13	4,500	0	0	0	0	0	0	39
14	1,500	4,500	0	0	24	44-55	41	14
15	0	0	85,000	124	0	0	0	62
<b>TOTAL</b>	<b>15,000</b>	<b>10,000</b>	<b>85,000</b>	<b>124</b>	<b>44</b>	<b>92-113</b>	<b>79</b>	<b>183</b>

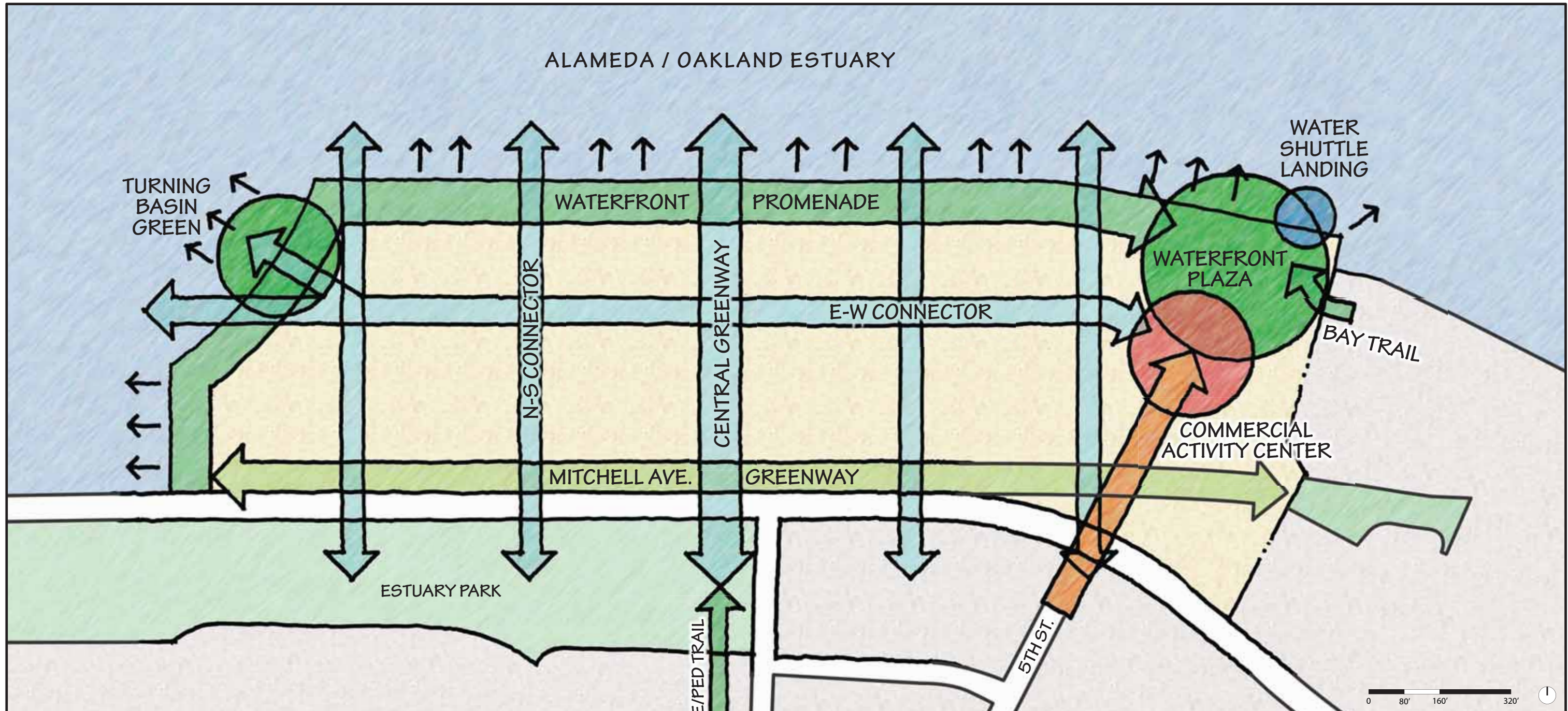


**5TH STREET CORRIDOR CONCEPT**

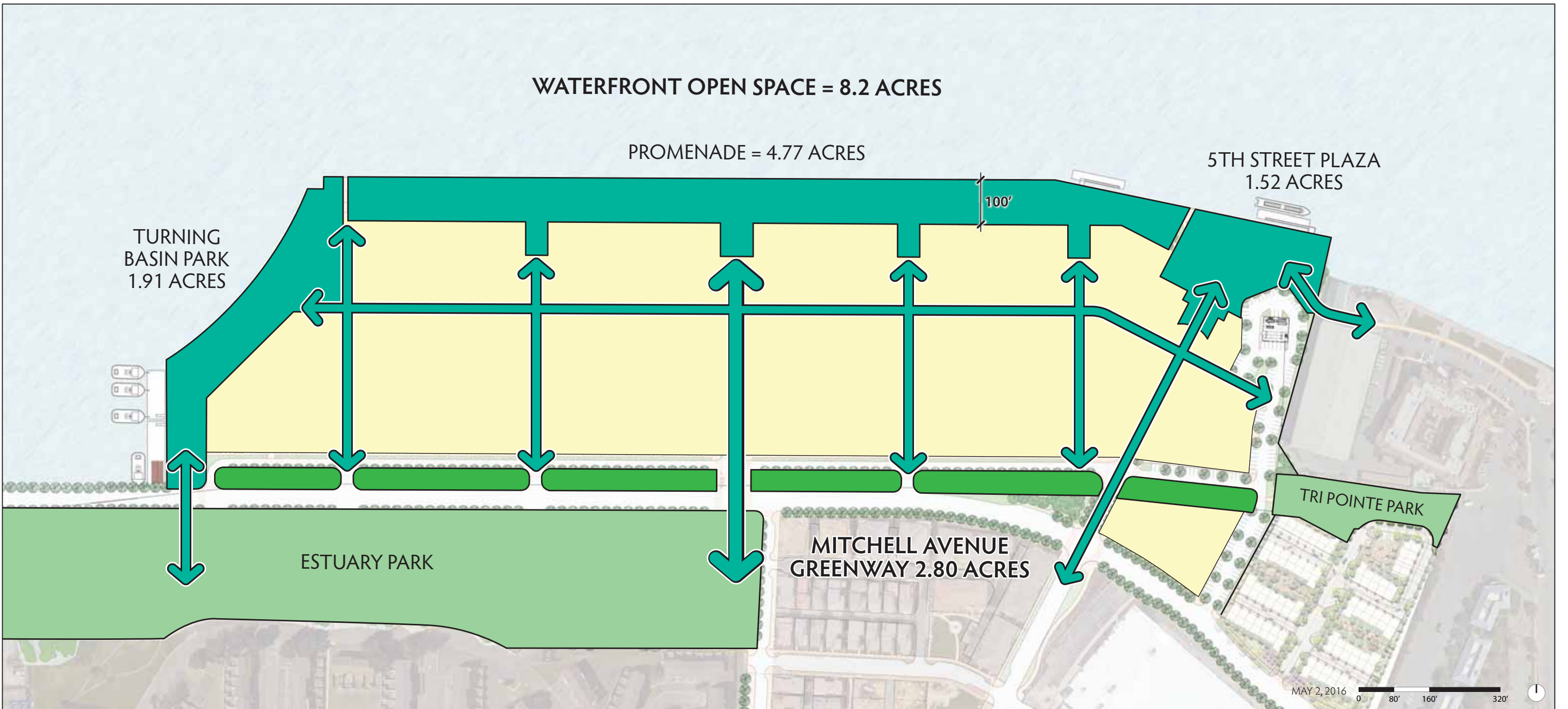


**WATERFRONT PROMENADE TYPICAL CROSS-SECTION**



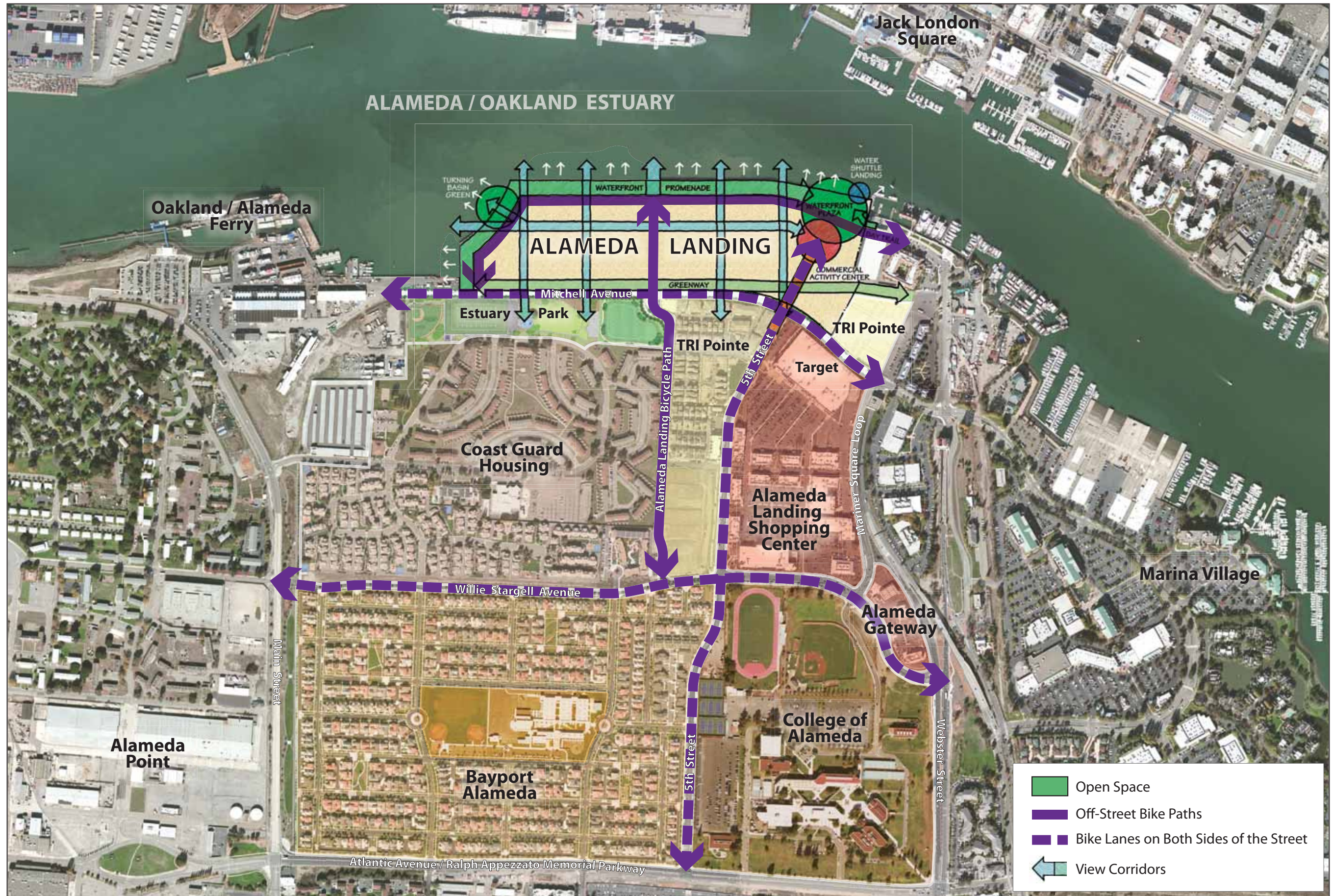


**FRAMEWORK PLAN: CONCEPT DIAGRAM**



**FRAMEWORK PLAN: OPEN SPACE DIAGRAM**

NOTE: TOTAL OPEN SPACE 11.0 ACRES, NOT INCLUDING OPEN SPACE LINKAGES SHOWN AS ARROWS



# BICYCLE CIRCULATION PLAN