

Dish Wireless
Alternative Site Analysis
SFSFO00958A

Proposed Site Address:

916 Union St

Alameda, CA 94501

APN: 71-272-13-00



RECEIVED

By CITY OF ALAMEDA at 12:14 pm, Sep 28, 2022

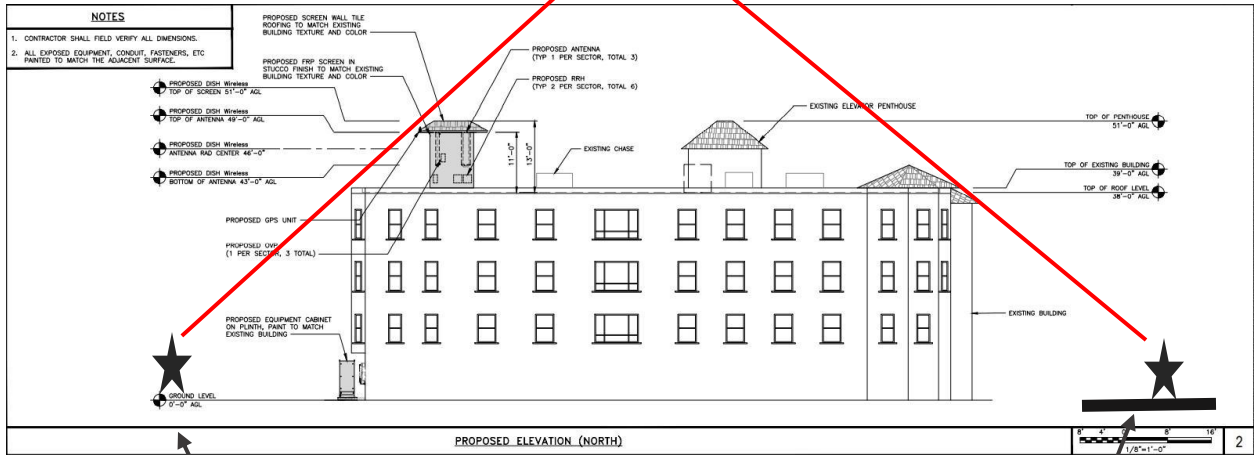


Note: This ring was chosen to serve the community residential area. This is a new network and is serving the greater neighborhood for service. It will help with all forms of coverage capacity including entertainment, emergency response and cellular capabilities.

This location ring was identified to fill in one of the coverage gaps for the new network Dish wireless is proposing. There are rings around the whole city of Alameda, with this being one of them. We start the search process by identifying all commercial properties in the ring and pursuing those. Unfortunately, this ring offers no city owned property or commercial properties for Dish to propose a telecom site. There are also no Co-Location opportunities available. That being said, there were very few candidates available at all in this highly dense residential area. It's surrounded by 4 schools and R1 properties and not viable for Dish's rooftop needs. The pitched roofs make a telecom facility impossible. The roof must be flat and have enough space to put the equipment. We also must have enough height for the antennas to transmit. This rules out almost all properties within the search ring. All Commercial buildings were either not feasible due to location, height or lease issues.

1. **2070 Clinton Ave, Alameda, CA 94501**

2020 Clinton is a hospital that was the intended candidate originally as the Sprint Decom was the area Dish was to take over. The hospital came back and said that they are ending all telecom leases and not taking on any new ones. We had to then defer to the current candidate.



Backyard

Union St

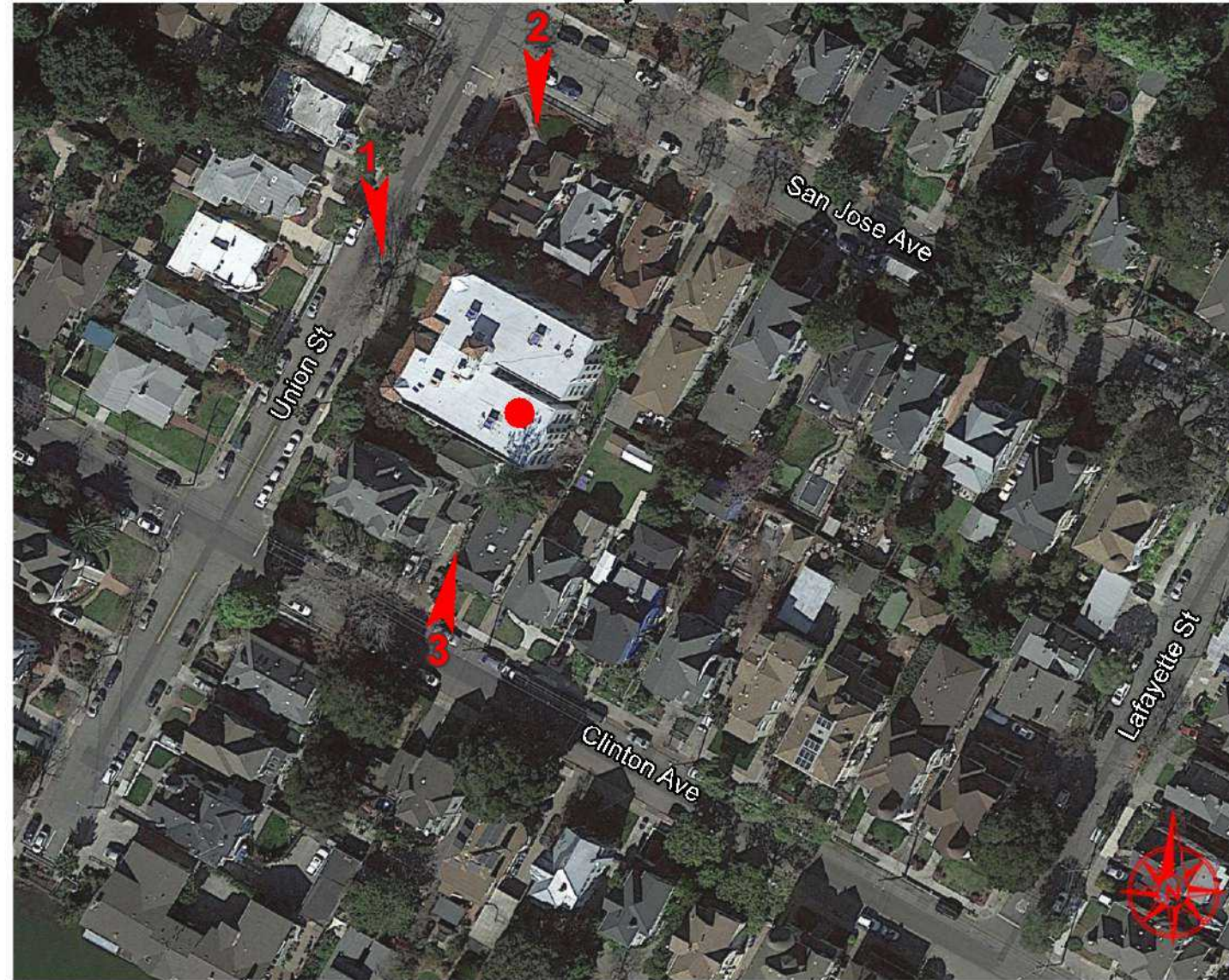
RECEIVED

By CITY OF ALAMEDA at 12:14 pm, Sep 28, 2022

PHOTO SIMULATION

ROOFTOP MOUNTED PANEL ANTENNAS:

916 UNION STREET, ALAMEDA, CA 94501



SHEET INDEX

PAGE NO.	PAGE TITLE
1	COVER
2	VIEW 1
3	VIEW 2
4	VIEW 3

PROJECT DESCRIPTION

DISH WIRELESS PROPOSES A NEW
SITE INSTALLATION

● LOCATION OF DISH WIRELESS ANTENNAS

COVER

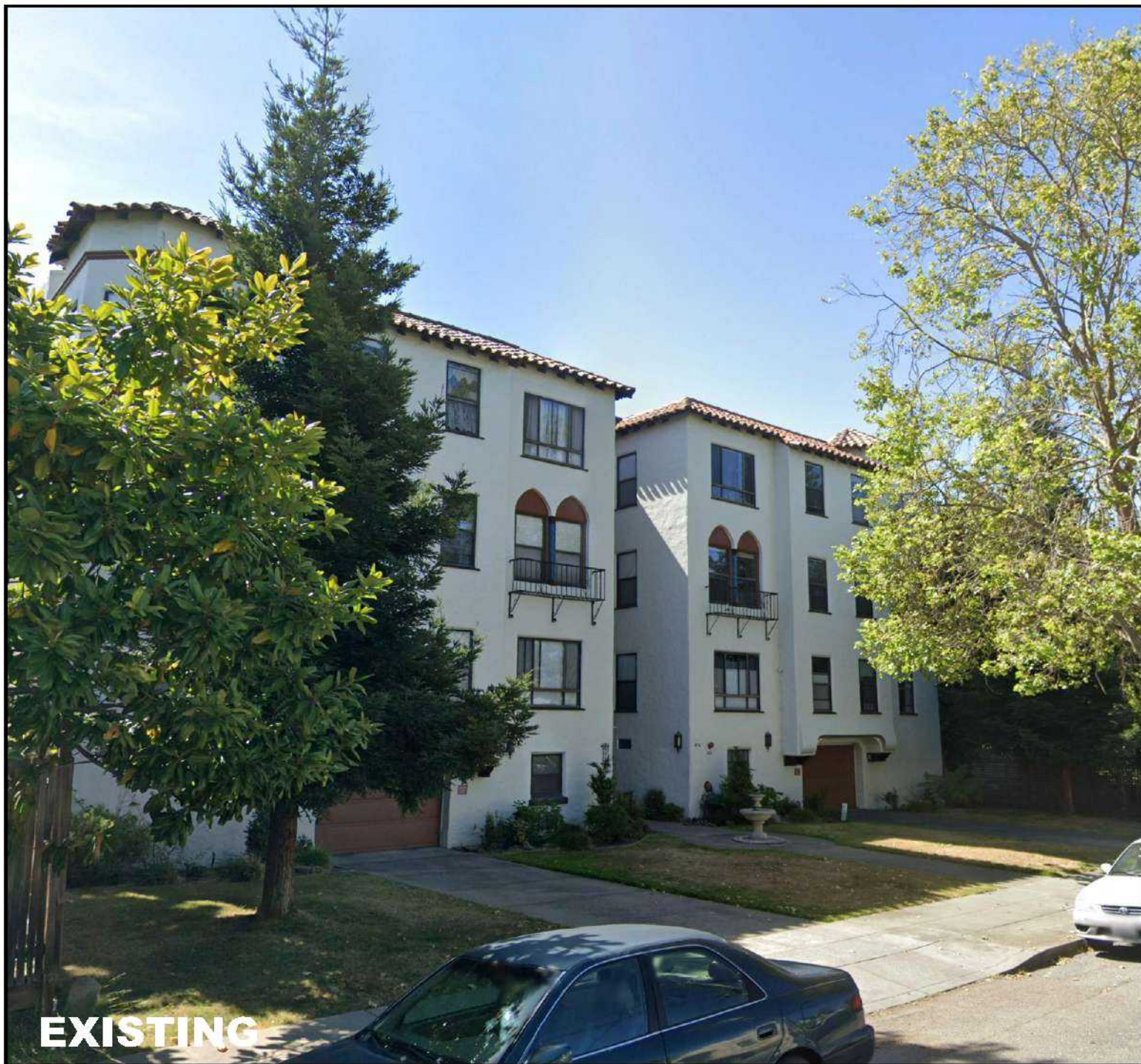
09.07.22



PROJECT INFORMATION

SITE ID: SFSFO00958A

SITE ADDRESS: 916 UNION STREET, ALAMEDA, CA 94501



VIEW 1 | NORTH VIEW FROM UNION ST

09.07.22



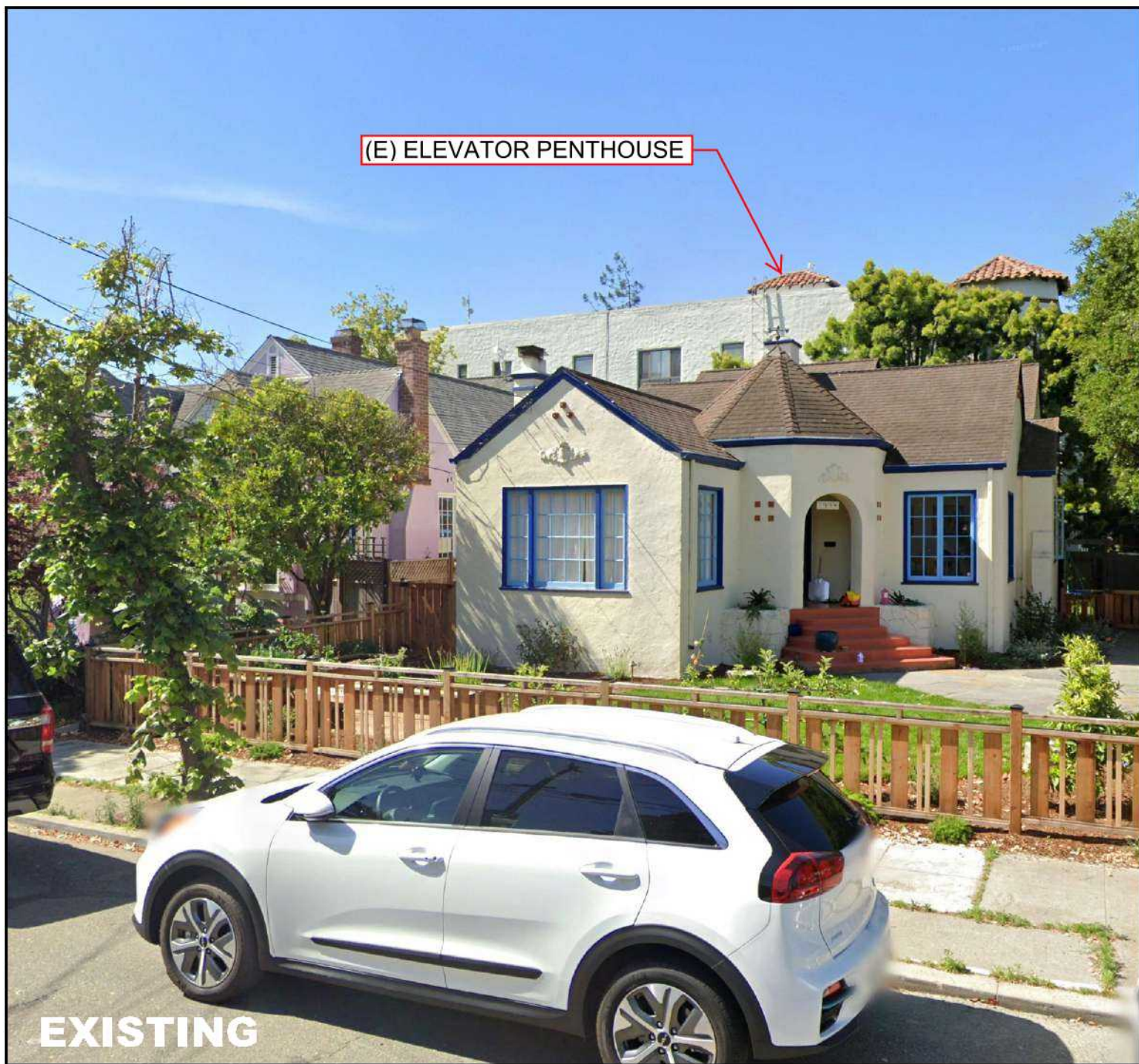
PROJECT INFORMATION

SITE ID: SFSFO00958A

SITE ADDRESS: 916 UNION STREET, ALAMEDA, CA 94501

RECEIVED

By CITY OF ALAMEDA at 12:14 pm, Sep 28, 2022



VIEW 2 | NORTH VIEW FROM SAN JOSE AVE

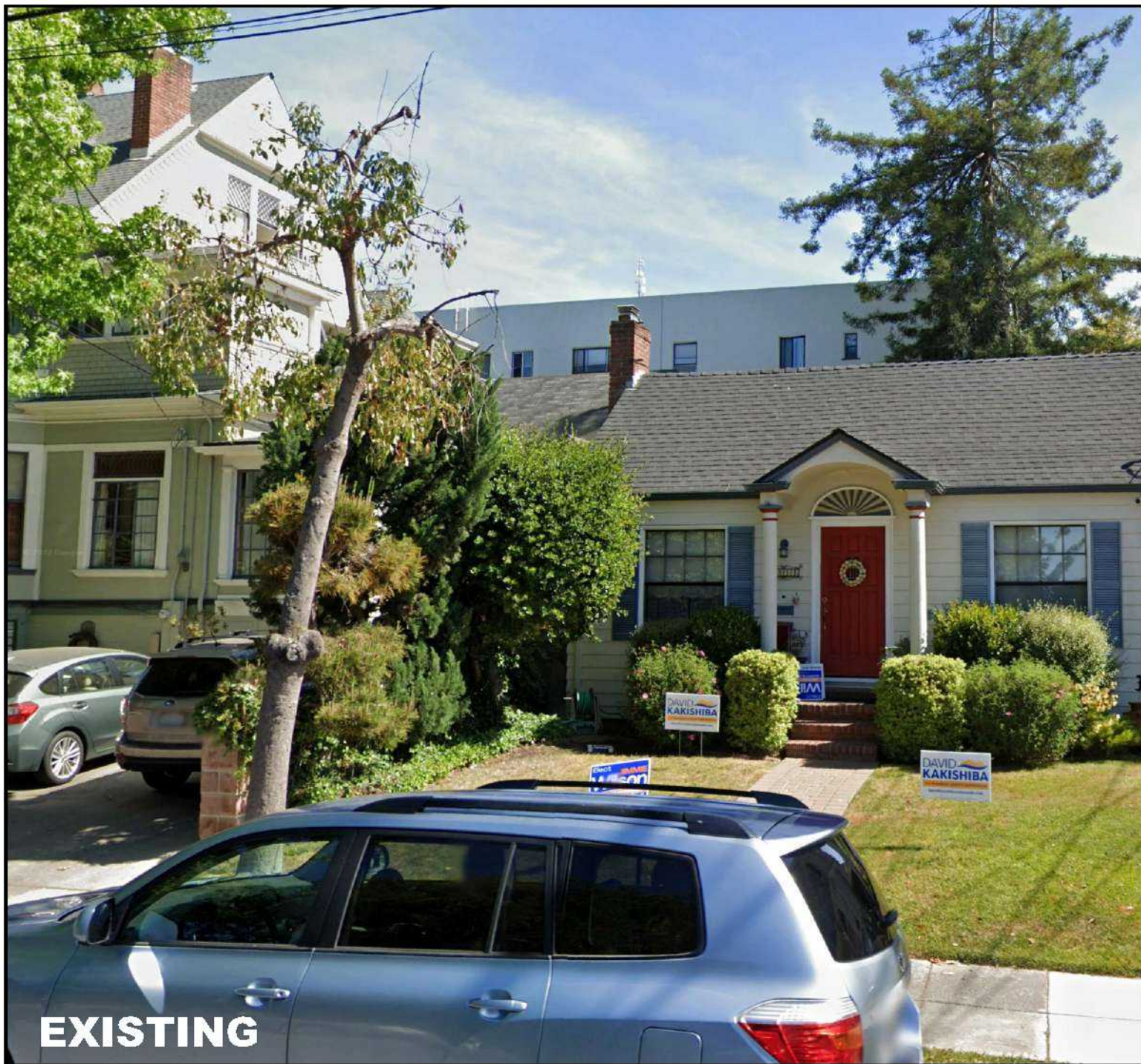
09.07.22



PROJECT INFORMATION

SITE ID: SFSFO00958A

SITE ADDRESS: 916 UNION STREET, ALAMEDA, CA 94501



(N) TILE ROOFING TO MATCH EXISTING

(N) ANTENNAS, RRH AND OVP BEHIND (N) FRP SCREEN

NOTE:
NEW FRP SCREEN AND TILE ROOFING TO MATCH EXISTING BUILDING COLOR AND TEXTURE.

VIEW 3 | SOUTH VIEW FROM CLINTON AVE

09.07.22



PROJECT INFORMATION

SITE ID: SFSFO00958A
SITE ADDRESS: 916 UNION STREET, ALAMEDA, CA 94501

Radio Frequency - Electromagnetic Energy (RF-EME) Report

Site No. SFSFO00958A

916 Union Street
Alameda, California 94501
37° 45' 56.07" N, -122° 15' 27.44" W NAD83

EBI Project No. 6222003325
September 28, 2022



Prepared for:
Dish Wireless

Prepared by:
 **EBI Consulting**
environmental | engineering | due diligence

RECEIVED

By CITY OF ALAMEDA at 12:15 pm, Sep 28, 2022

TABLE OF CONTENTS

EXECUTIVE SUMMARY	1
1.0 INTRODUCTION	2
2.0 SITE DESCRIPTION	2
3.0 WORST-CASE PREDICTIVE MODELING	3
4.0 MITIGATION/SITE CONTROL OPTIONS	4
5.0 SUMMARY AND CONCLUSIONS	5
6.0 LIMITATIONS	5

APPENDICES

APPENDIX A CERTIFICATIONS

APPENDIX B RADIO FREQUENCY ELECTROMAGNETIC ENERGY SAFETY / SIGNAGE PLANS

APPENDIX C FEDERAL COMMUNICATIONS COMMISSION (FCC) REQUIREMENTS

REFERENCE DOCUMENTS (NOT ATTACHED)

CDs: SFSFO00958A_100% ZDs_08.23.22

RFDS: RFDS-SFSFO00958A-PRELIMINARY-20220224-v.2_20220224131311.PDF

EXECUTIVE SUMMARY

Purpose of Report

EnviroBusiness Inc. (dba EBI Consulting) has been contracted by Dish Wireless to conduct radio frequency electromagnetic (RF-EME) modeling for Dish Wireless Site SFSFO00958A located at 916 Union Street in Alameda, California to determine RF-EME exposure levels from proposed Dish Wireless communications equipment at this site. As described in greater detail in Appendix C of this report, the Federal Communications Commission (FCC) has developed Maximum Permissible Exposure (MPE) Limits for the general public and for occupational activities. This report summarizes the results of RF-EME modeling in relation to relevant FCC RF-EME compliance standards for limiting human exposure to RF-EME fields.

Statement of Compliance

A site is considered out of compliance with FCC regulations if there are areas that exceed the FCC exposure limits and there are no RF hazard mitigation measures in place. Any carrier which has an installation that contributes more than 5% of the applicable MPE must participate in mitigating these RF hazards.

As presented in the sections below, based on worst-case predictive modeling, the worst-case emitted power density may exceed the FCC's general public limit within approximately 28 feet of DISH's proposed antennas at the main roof level. Modeling also indicates that the worst-case emitted power density may exceed the FCC's occupational limit within approximately 5 feet of DISH's proposed antennas at the main roof level. Additionally, there are areas where workers who may be elevated above the rooftop or ground may be exposed to power densities greater than the occupational limits. Therefore, workers should be informed about the presence and locations of antennas and their associated fields.

At the nearest walking/working surfaces to the Dish Wireless antennas, the maximum power density generated by the DISH antennas is approximately **816.83** percent of the FCC's general public limit (**163.37** percent of the FCC's occupational limit).

The composite exposure level from all carriers on this site is approximately **816.83** percent of the FCC's general public limit (**163.37** percent of the FCC's occupational limit) at the nearest walking/working surface to each antenna.

Recommended control measures are outlined in Section 4.0 and within the Site Safety Plan (attached); Dish Wireless should also provide procedures to shut down and lockout/tagout this wireless equipment in accordance with their own standard operating protocol. Non-telecom workers who will be working in areas of exceedance are required to contact Dish Wireless since only DISH has the ability to lockout/tagout the facility, or to authorize others to do so.

1.0 INTRODUCTION

Radio frequency waves are electromagnetic waves from the portion of the electromagnetic spectrum at frequencies lower than visible light and microwaves. The wavelengths of radio waves range from thousands of meters to around 30 centimeters. These wavelengths correspond to frequencies as low as 3 cycles per second (or hertz [Hz]) to as high as one gigahertz (one billion cycles per second).

Personal Communication (PCS) facilities used by Dish Wireless in this area will potentially operate within a frequency range of 600 to 5000 MHz. Facilities typically consist of: 1) electronic transceivers (the radios or cabinets) connected to wired telephone lines; and 2) antennas that send the wireless signals created by the transceivers to be received by individual subscriber units (PCS telephones). Transceivers are typically connected to antennas by coaxial cables.

Because of the short wavelength of PCS services, the antennas require line-of-site paths for good propagation, and are typically installed a distance above ground level. Antennas are constructed to concentrate energy towards the horizon, with as little energy as possible scattered towards the ground or the sky. This design, combined with the low power of PCS facilities, generally results in no possibility for exposure to approach Maximum Permissible Exposure (MPE) levels, with the exception of in areas in the immediate vicinity of the antennas.

MPE limits do not represent levels where a health risk exists, since they are designed to provide a substantial margin of safety. These limits apply for continuous exposures and are intended to provide a prudent margin of safety for all persons, regardless of age, gender, size or health.

2.0 SITE DESCRIPTION

This project site includes the following proposed wireless telecommunication antennas on a rooftop located at 916 Union Street in Alameda, California.

Ant #	Operator	Antenna Make	Antenna Model	Frequency (MHz)	Azimuth (deg.)	Mechanical Downtilt (deg.)	Horizontal Beamwidth (Degrees)	Aperture (feet)	Total Power Input (Watts)	Gain (dBd)*	Total ERP (Watts)	Total EIRP (Watts)
1	Dish	JMA	MX08FRO665-21 07DT 600	600	30	0	60	6.0	120	11.25	1426.20	2338.97
1	Dish	JMA	MX08FRO665-21 03DT 2007	2007	30	0	66	6.0	160	16.15	5876.52	9637.49
1	Dish	JMA	MX08FRO665-21 03DT 2100	2100	30	0	65	6.0	160	16.75	6747.14	11065.32
2	Dish	JMA	MX08FRO665-21 02DT 600	600	150	0	62	6.0	120	11.35	1459.42	2393.45
2	Dish	JMA	MX08FRO665-21 02DT 2007	2007	150	0	62	6.0	160	15.75	5359.45	8789.49
2	Dish	JMA	MX08FRO665-21 02DT 2100	2100	150	0	65	6.0	160	16.75	6747.14	11065.32
3	Dish	JMA	MX08FRO665-21 02DT 600	600	250	0	62	6.0	120	11.35	1459.42	2393.45
3	Dish	JMA	MX08FRO665-21 02DT 2007	2007	250	0	62	6.0	160	15.75	5359.45	8789.49
3	Dish	JMA	MX08FRO665-21 02DT 2100	2100	250	0	65	6.0	160	16.75	6747.14	11065.32

* Note there is 1 Dish Wireless antenna per sector at this site. For clarity, the different frequencies for each antenna are entered on separate lines.

Ant #	NAME	X	Y	Antenna Radiation Centerline	Z-Height Main Roof	Z-Height Penthouse	Z-Height Adjacent Building	Z-Height Adjacent Building	Z-Height Ground
1	Dish	3.2	13.1	46.0	8.0	-5.0	18.0	30.0	46.0
2	Dish	0.2	16.8	46.0	8.0	-5.0	18.0	30.0	46.0
3	Dish	3.9	19.1	46.0	8.0	-5.0	18.0	30.0	46.0

* Note the Z-Height represents the distance from the antenna centerline in feet.

The above tables contain an inventory of proposed Dish Wireless antennas and other carrier antennas if sufficient information was available to model them. Note that EBI uses an assumed set of antenna specifications and powers for unknown and other carrier antennas for modeling purposes. The FCC guidelines incorporate two separate tiers of exposure limits that are based upon occupational/controlled exposure limits (for workers) and general population/uncontrolled exposure limits for members of the general public that may be exposed to antenna fields. While access to this site is considered uncontrolled, the analysis has considered exposures with respect to both controlled and uncontrolled limits as an untrained worker may access adjacent rooftop locations. Additional information regarding controlled/uncontrolled exposure limits is provided in Appendix C. Appendix B presents a site safety plan that provides a plan view of the rooftop with antenna locations.

3.0 WORST-CASE PREDICTIVE MODELING

EBI has performed theoretical MPE modeling using RoofMaster™ software to estimate the worst-case power density at the site's nearby broadcast levels resulting from operation of the antennas. RoofMaster™ is a widely-used predictive modeling program that has been developed by Waterford Consultants to predict RF power density values for rooftop and tower telecommunications sites produced by vertical collinear antennas that are typically used in the cellular, PCS, paging and other communications services. Using the computational methods set forth in Federal Communications Commission (FCC) Office of Engineering & Technology (OET) Bulletin 65, "Evaluating Compliance with FCC Guidelines for Human Exposure to Radiofrequency Electromagnetic Fields" (OET-65), RoofMaster™ calculates predicted power density in a scalable grid based on the contributions of all RF sources characterized in the study scenario. At each grid location, the cumulative power density is expressed as a percentage of the FCC limits. Manufacturer antenna pattern data is utilized in these calculations. RoofMaster™ models consist of the Far Field model as specified in OET-65 and an implementation of the OET-65 Cylindrical Model (Sula9). The models utilize several operational specifications for different types of antennas to produce a plot of spatially-averaged power densities that can be expressed as a percentage of the applicable exposure limit.

For this report, EBI utilized antenna and power data provided by Dish Wireless and compared the resultant worst-case MPE levels to the FCC's occupational/controlled exposure limits outlined in OET Bulletin 65. The assumptions used in the modeling are based upon information provided by Dish Wireless and information gathered from other sources. Elevations of walking/working surfaces were estimated based on elevations provided and available aerial imagery. Sector orientation assignments were made assuming coverage is directed to areas of site. Changes to antenna mount heights or placement will impact site compliance. The parameters used for modeling are summarized in the Site Description antenna inventory table in Section 2.0.

There are no other wireless carriers with equipment installed at this site.

Based on worst-case predictive modeling, the worst-case emitted power density may exceed the FCC's general public limit within approximately 28 feet of Dish Wireless's Sector A antennas and 18 feet of the Sector B and C antennas on the main roof level. Modeling also indicates that the worst-case emitted power density may exceed the FCC's occupational limit within approximately 5 feet of Dish Wireless's Sector A antennas and 4 feet of the Sector B and C antennas on the main roof level. At the nearest walking/working surfaces to the Dish Wireless antennas, the maximum power density generated by the Dish Wireless antennas is approximately 816.83 percent of the FCC's general public limit (163.37 percent of the FCC's occupational limit). The composite exposure level from all carriers on this site is approximately 816.83 percent of the FCC's general public limit (163.37 percent of the FCC's occupational limit) at the nearest walking/working surface to each antenna.

At interior locations on the top floor of the building, these maximum exposure levels will be significantly attenuated due to the blocking effect created by intervening roof materials¹. The amount of attenuation depends upon the type(s) of roofing materials and height of the nearest walking surface relative to the antenna centerline.

The Site Safety Plan also presents areas where Dish Wireless antennas contribute greater than 5% of the applicable MPE limit for a site. A site is considered out of compliance with FCC regulations if there are areas that exceed the FCC exposure limits and there are no RF hazard mitigation measures in place. Any carrier which has an installation that contributes more than 5% of the applicable MPE must participate in mitigating these RF hazards.

The inputs used in the modeling are summarized in the Site Description antenna inventory table in Section 2.0. A graphical representation of the RoofMaster™ modeling results is presented in Appendix B. Microwave dish antennas are designed for point-to-point operations at the elevations of the installed equipment rather than ground level coverage. The maximum power density generated by all carrier antennas, including microwaves and panel antennas, is included in the modeling results presented within this report.

4.0 MITIGATION/SITE CONTROL OPTIONS

EBI's modeling indicates that there are areas in front of the Dish Wireless antennas that exceed the FCC standards for general public and occupational exposure. In order to alert people accessing the rooftop, a Guidelines sign and an NOC Information are recommended for installation at each access point to the rooftop. Additionally, yellow Caution signs are recommended for installation on the barriers in front of the Dish Wireless antennas on the main roof level and on the back of the antennas inside the RF screening. These signs must be placed in a conspicuous manner so that they are visible to any person approaching the barriers from any direction.

Barriers are recommended for installation when possible to block access to the areas in front of the antennas that exceed the FCC general public and/or occupational limits. Barriers may consist of rope, chain, or fencing. Painted stripes should only be used as a last resort. Barriers are recommended in front of the antennas on the main roof level. A 7-foot barrier and a 6-foot by 18-foot by 6-foot barrier in front of the Sector A antenna, a 9-foot barrier in front of the Sector B antenna, and a 15-foot by 13-foot by 11-foot by 11-foot barrier in front of the Sector C antenna.

These protocols and recommended control measures have been summarized and included with a graphic representation of the antennas and associated signage and control areas in a RF-EME Site Safety Plan, which is included as Appendix B. Individuals and workers accessing the rooftop should be provided with a copy of the attached Site Safety Plan, made aware of the posted signage and installation of the recommended barriers, and signify their understanding of the Site Safety Plan.

To reduce the risk of exposure, EBI recommends that access to areas associated with the active antenna installation be restricted and secured where possible.

Implementation of the signage and installation of the recommended barriers recommended in the Site Safety Plan and in this report will bring this site into compliance with the FCC's rules and regulations.

¹Based upon wireless signal attenuation factors cited in various industry publications. One example can be found at CAS Data Loggers, "The Basics of Signal Attenuation, July 12, 2012, Table 1-2, Obstacle Attenuation.

5.0 SUMMARY AND CONCLUSIONS

EBI has prepared a Radiofrequency – Electromagnetic Energy (RF-EME) Compliance Report for telecommunications equipment installed by Dish Wireless Site Number SFSFO00958A located at 916 Union Street in Alameda, California to determine worst-case predicted RF-EME exposure levels from wireless communications equipment installed at this site. This report summarizes the results of RF-EME modeling in relation to relevant Federal Communications Commission (FCC) RF-EME compliance standards for limiting human exposure to RF-EME fields.

As presented in the sections above, based on the FCC criteria, the worst-case emitted power density may exceed the FCC's general public limit within approximately 28 feet of Dish Wireless's proposed antennas at the main roof level. Modeling also indicates that the worst-case emitted power density may exceed the FCC's occupational limit within approximately 5 feet of Dish Wireless's proposed antennas at the main roof level.

Workers should be informed about the presence and locations of antennas and their associated fields. Recommended control measures are outlined in Section 4.0 and within the Site Safety Plan (attached); Dish Wireless should also provide procedures to shut down and lockout/tagout this wireless equipment in accordance with their own standard operating protocol. Non-telecom workers who will be working in areas of exceedance are required to contact Dish Wireless since only Dish Wireless has the ability to lockout/tagout the facility, or to authorize others to do so.

6.0 LIMITATIONS

This report was prepared for the use of Dish Wireless. It was performed in accordance with generally accepted practices of other consultants undertaking similar studies at the same time and in the same locale under like circumstances. The conclusions provided by EBI are based solely on the information provided by the client. The observations in this report are valid on the date of the investigation. Any additional information that becomes available concerning the site should be provided to EBI so that our conclusions may be revised and modified, if necessary. This report has been prepared in accordance with Standard Conditions for Engagement and authorized proposal, both of which are integral parts of this report. No other warranty, expressed or implied, is made.

Appendix A

Certifications

Preparer Certification

I, Erik Johnson, state that:

- I am an employee of EnviroBusiness Inc. (d/b/a EBI Consulting), which provides RF-EME safety and compliance services to the wireless communications industry.
- I have successfully completed RF-EME safety training, and I am aware of the potential hazards from RF-EME and would be classified "occupational" under the FCC regulations.
- I am fully aware of and familiar with the Rules and Regulations of both the Federal Communications Commissions (FCC) and the Occupational Safety and Health Administration (OSHA) with regard to Human Exposure to Radio Frequency Radiation.
- I have reviewed the data provided by the client and incorporated it into this Site Compliance Report such that the information contained in this report is true and accurate to the best of my knowledge.

A rectangular box containing a handwritten signature in black ink. The signature appears to be "Erik Johnson" written in a cursive style.

Reviewed and Approved by:



sealed 28sep2022

Michael McGuire
Electrical Engineer
mike@h2dc.com

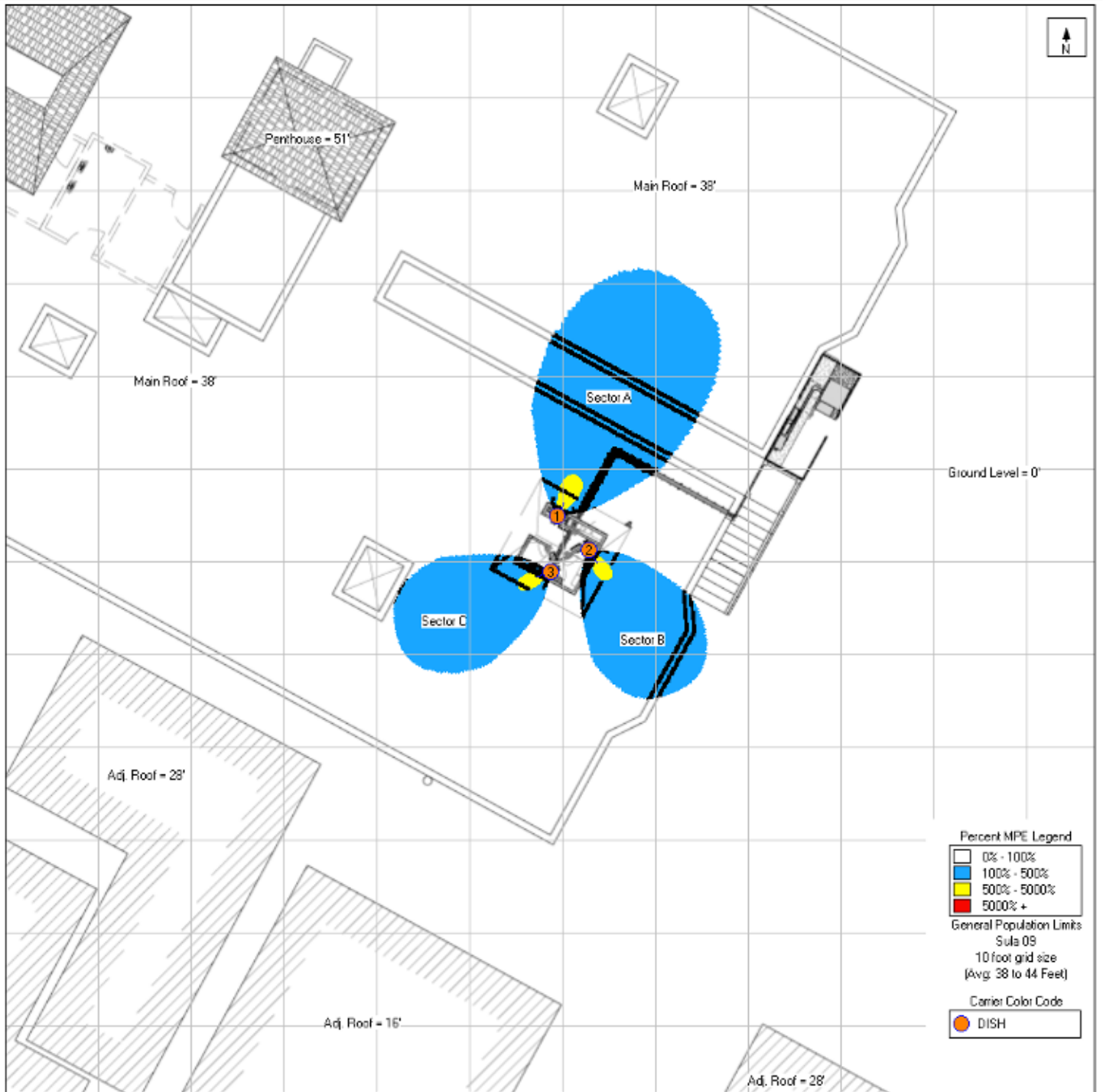
Note that EBI's scope of work is limited to an evaluation of the Radio Frequency – Electromagnetic Energy (RF-EME) field generated by the antennas and broadcast equipment noted in this report. The engineering and design of the building and related structures, as well as the impact of the antennas and broadcast equipment on the structural integrity of the building, are specifically excluded from EBI's scope of work.

Appendix B

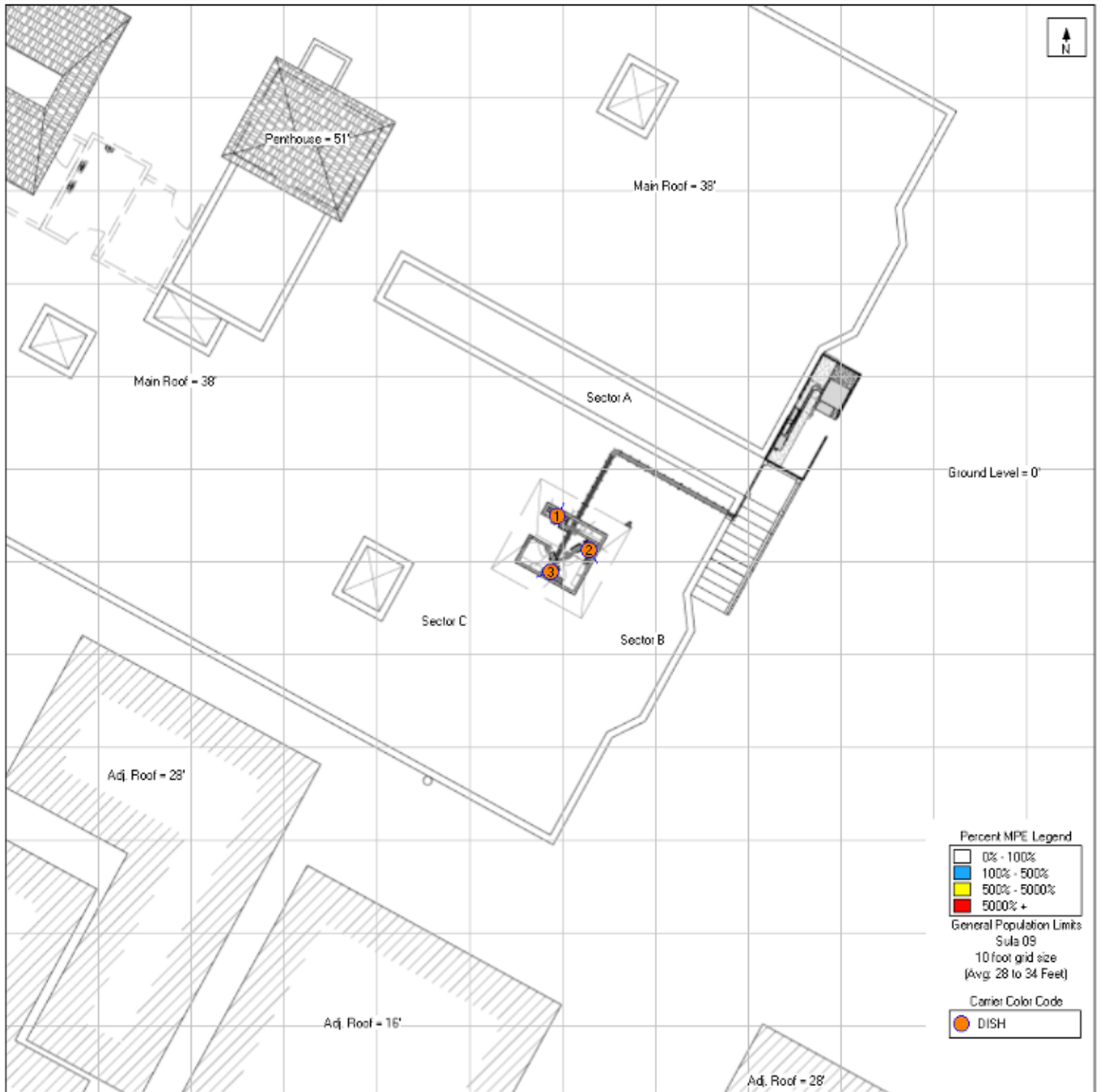
Radio Frequency Electromagnetic Energy

Safety Information and Signage Plans

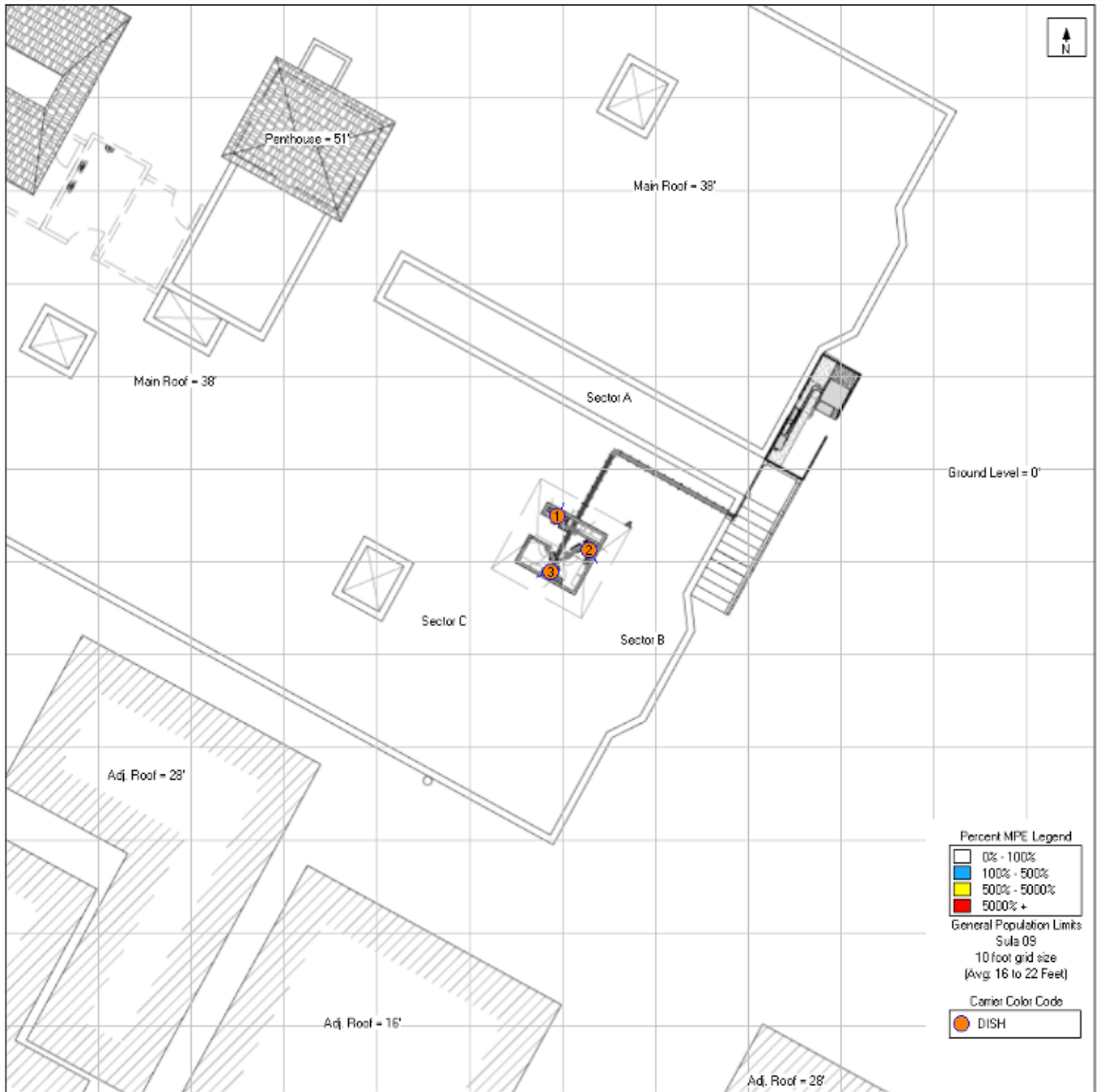
Nearest Walking Surface (Main Roof Level) Simulation



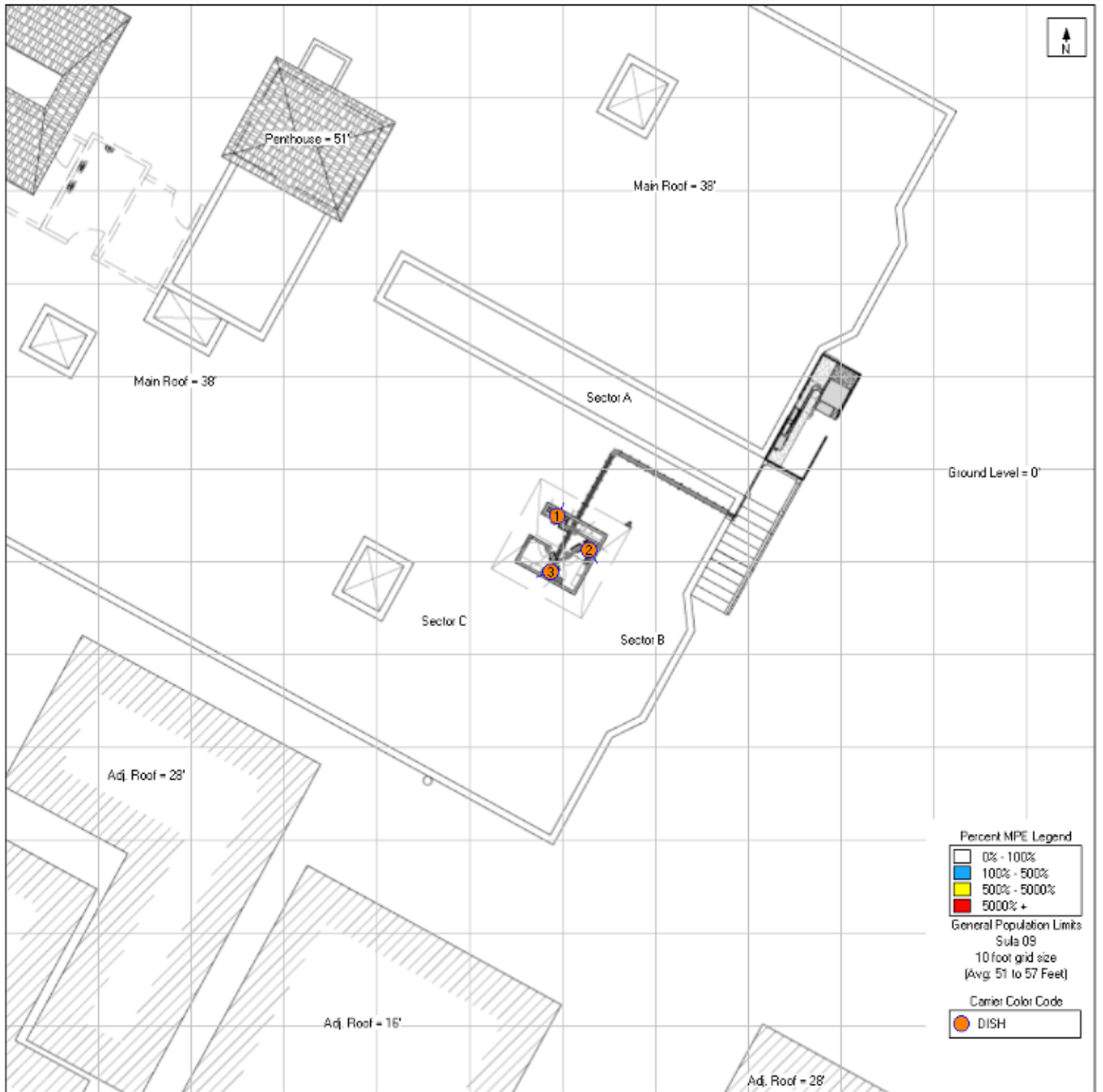
Top Floor and Adjacent Roof Level Simulation



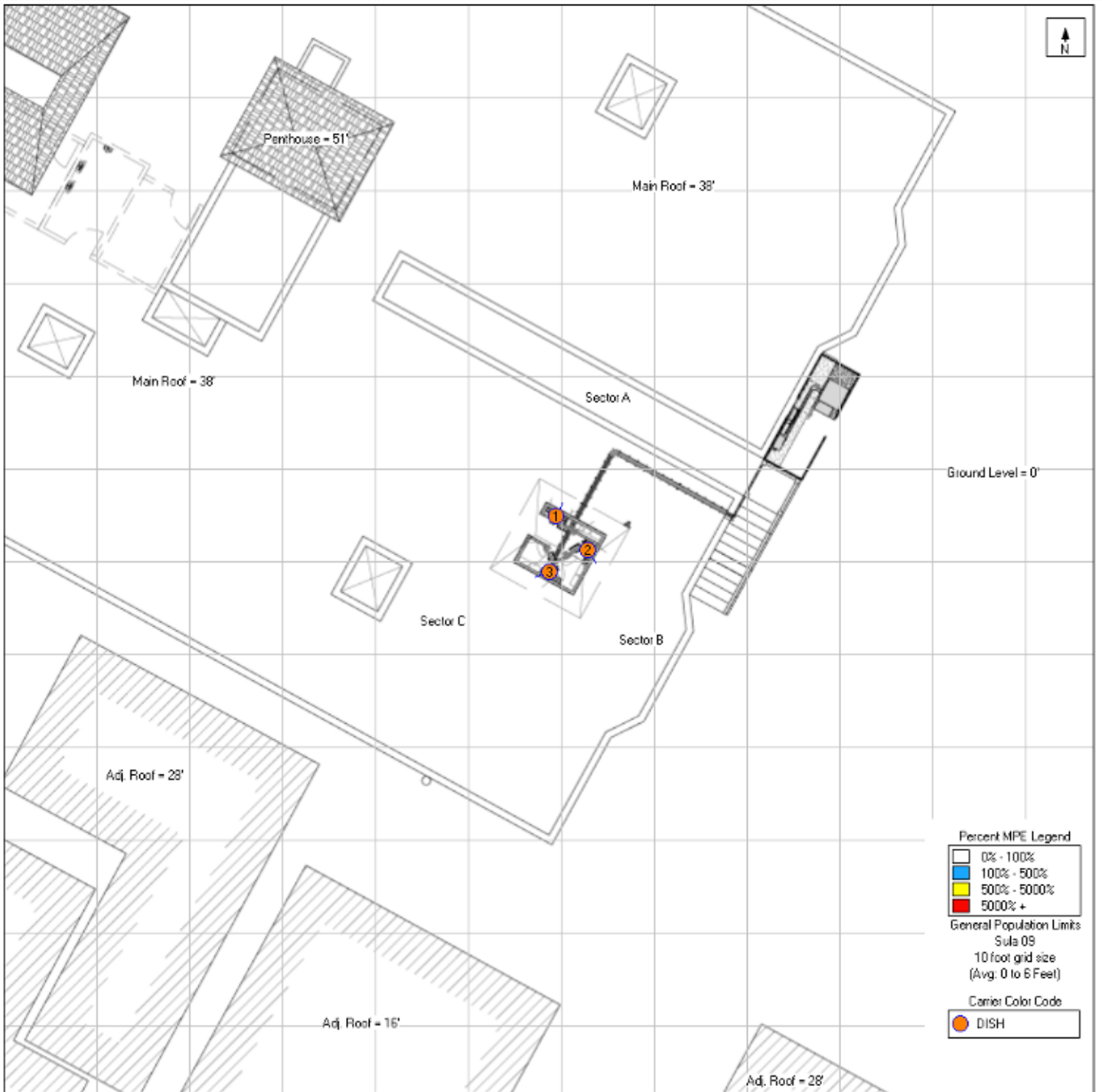
Lower Adjacent Roof Level Simulation



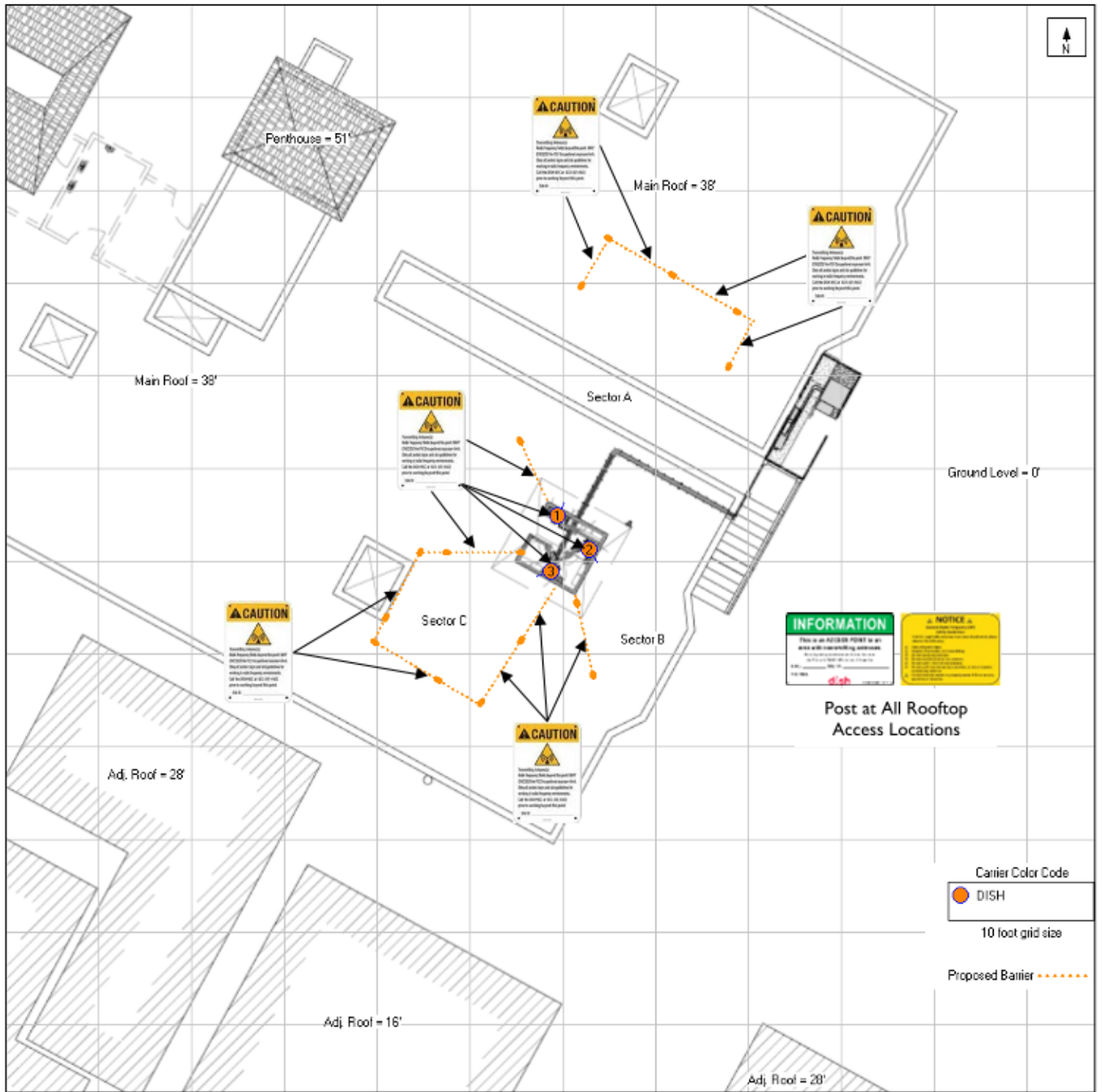
Penthouse Roof Level Simulation












Ground Level Simulation



Dish Wireless Safety (Signage) Plan



Final Compliance Configuration							
	GUIDELINES	NOTICE	CAUTION	WARNING	NOC INFO	BARRIER/MARKER	
Access Point(s)	0	0	0	0	0	0	dimensions
Alpha	0	0	6	0	0	0	7' & 6'x18'x6'
Beta	0	0	2	0	0	0	9'
Gamma	0	0	6	0	0	0	15'x13'x11'x11'

Sign	Posting Instructions	Required Signage / Mitigation
	<p>NOC Information</p> <p>Information signs are used to provide contact information for any questions or concerns for personnel accessing the site.</p>	Securely post at the main rooftop access door and every point of access to the site in a manner conspicuous to all individuals entering thereon as indicated in the signage plan.
	<p>Guidelines</p> <p>Informational sign used to notify workers that there are active antennas installed and provide guidelines for working in RF environments.</p>	Securely post at the main rooftop access door and every point of access to the site in a manner conspicuous to all individuals entering thereon as indicated in the signage plan.
	<p>Notice</p> <p>Used to notify individuals they are entering an area where the power density emitted from transmitting antennas may exceed the FCC's MPE limit for the general public or occupational exposures.</p>	N/A
	<p>Caution</p> <p>Used to notify individuals that they are entering a hot spot where either the general public or occupational FCC's MPE limit is or could be exceeded.</p>	Post every 8 feet on approaching sides of the barriers in front of the antennas in all Sectors. Mount on the back of the antennas in all Sectors.
	<p>Warning</p> <p>Used to notify individuals that they are entering a hot zone where the occupational FCC's MPE limit has been exceeded by 10x.</p>	N/A

Appendix C

Federal Communications Commission (FCC) Requirements

The FCC has established Maximum Permissible Exposure (MPE) limits for human exposure to Radiofrequency Electromagnetic (RF-EME) energy fields, based on exposure limits recommended by the National Council on Radiation Protection and Measurements (NCRP) and, over a wide range of frequencies, the exposure limits developed by the Institute of Electrical and Electronics Engineers, Inc. (IEEE) and adopted by the American National Standards Institute (ANSI) to replace the 1982 ANSI guidelines. Limits for localized absorption are based on recommendations of both ANSI/IEEE and NCRP.

The FCC guidelines incorporate two separate tiers of exposure limits that are based upon occupational/controlled exposure limits (for workers) and general public/uncontrolled exposure limits for members of the general public.

Occupational/controlled exposure limits apply to situations in which persons are exposed as a consequence of their employment and in which those persons who are exposed have been made fully aware of the potential for exposure and can exercise control over their exposure. Occupational/controlled exposure limits also apply where exposure is of a transient nature as a result of incidental passage through a location where exposure levels may be above general public/uncontrolled limits (see below), as long as the exposed person has been made fully aware of the potential for exposure and can exercise control over his or her exposure by leaving the area or by some other appropriate means.

General public/uncontrolled exposure limits apply to situations in which the general public may be exposed or in which persons who are exposed as a consequence of their employment may not be made fully aware of the potential for exposure or cannot exercise control over their exposure. Therefore, members of the general public would always be considered under this category when exposure is not employment-related, for example, in the case of a telecommunications tower that exposes persons in a nearby residential area.

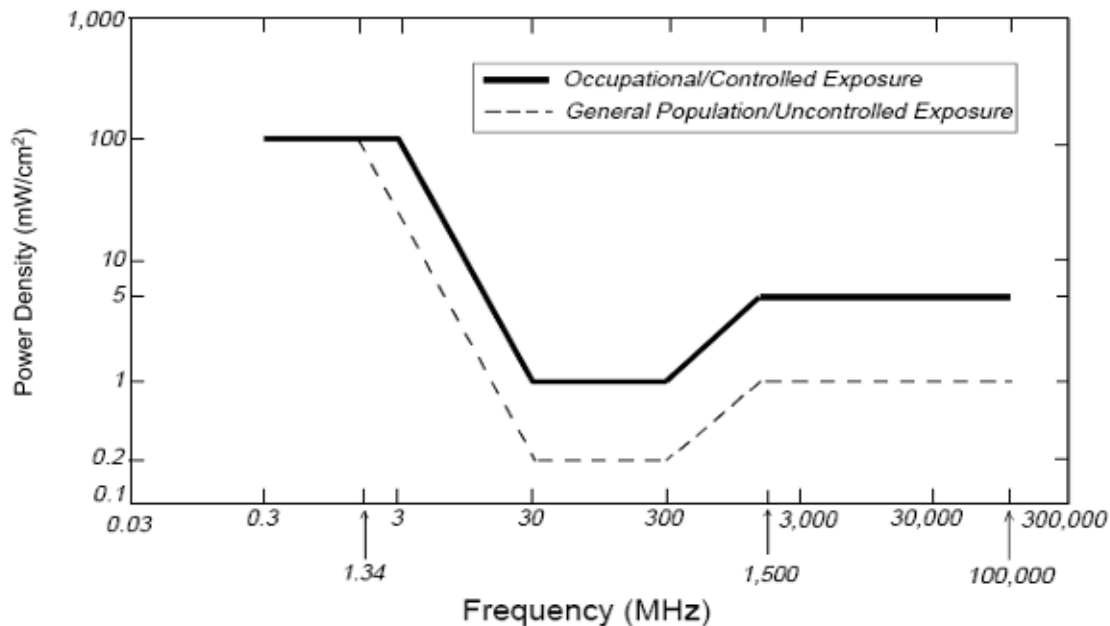
Table I and Figure I (below), which are included within the FCC's OET Bulletin 65, summarize the MPE limits for RF emissions. These limits are designed to provide a substantial margin of safety. They vary by frequency to take into account the different types of equipment that may be in operation at a particular facility and are "time-averaged" limits to reflect different durations resulting from controlled and uncontrolled exposures.

The FCC's MPEs are measured in terms of power (mW) over a unit surface area (cm²). Known as the power density, the FCC has established an occupational MPE of 5 milliwatts per square centimeter (mW/cm²) and an uncontrolled MPE of 1 mW/cm² for equipment operating in the 1900 MHz frequency range. For the Dish Wireless equipment operating at 600 MHz or 850 MHz, the FCC's occupational MPE is 2.83 mW/cm² and an uncontrolled MPE of 0.57 mW/cm². For the Dish Wireless equipment operating at 1900 MHz, the FCC's occupational MPE is 5.0 mW/cm² and an uncontrolled MPE limit of 1.0 mW/cm². These limits are considered protective of these populations.

Table 1: Limits for Maximum Permissible Exposure (MPE)				
(A) Limits for Occupational/Controlled Exposure				
Frequency Range (MHz)	Electric Field Strength (E) (V/m)	Magnetic Field Strength (H) (A/m)	Power Density (S) (mW/cm ²)	Averaging Time [E] ² , [H] ² , or S (minutes)
0.3-3.0	614	1.63	(100)*	6
3.0-30	1842/f	4.89/f	(900/f ²)*	6
30-300	61.4	0.163	1.0	6
300-1,500	--	--	f/300	6
1,500-100,000	--	--	5	6
(B) Limits for General Public/Uncontrolled Exposure				
Frequency Range (MHz)	Electric Field Strength (E) (V/m)	Magnetic Field Strength (H) (A/m)	Power Density (S) (mW/cm ²)	Averaging Time [E] ² , [H] ² , or S (minutes)
0.3-1.34	614	1.63	(100)*	30
1.34-30	824/f	2.19/f	(180/f ²)*	30
30-300	27.5	0.073	0.2	30
300-1,500	--	--	f/1,500	30
1,500-100,000	--	--	1.0	30

f = Frequency in (MHz)
 * Plane-wave equivalent power density

Figure 1. FCC Limits for Maximum Permissible Exposure (MPE)
 Plane-wave Equivalent Power Density



Based on the above, the most restrictive thresholds for exposures of unlimited duration to RF energy for several personal wireless services are summarized below:

Personal Wireless Service	Approximate Frequency	Occupational MPE	Public MPE
Microwave (Point-to-Point)	5,000 - 80,000 MHz	5.00 mW/cm ²	1.00 mW/cm ²
Broadband Radio (BRS)	2,600 MHz	5.00 mW/cm ²	1.00 mW/cm ²
Wireless Communication (WCS)	2,300 MHz	5.00 mW/cm ²	1.00 mW/cm ²
Advanced Wireless (AWS)	2,100 MHz	5.00 mW/cm ²	1.00 mW/cm ²
Personal Communication (PCS)	1,950 MHz	5.00 mW/cm ²	1.00 mW/cm ²
Cellular Telephone	870 MHz	2.90 mW/cm ²	0.58 mW/cm ²
Specialized Mobile Radio (SMR)	855 MHz	2.85 mW/cm ²	0.57 mW/cm ²
Long Term Evolution (LTE)	700 MHz	2.33 mW/cm ²	0.47 mW/cm ²
Most Restrictive Frequency Range	30-300 MHz	1.00 mW/cm ²	0.20 mW/cm ²

MPE limits are designed to provide a substantial margin of safety. These limits apply for continuous exposures and are intended to provide a prudent margin of safety for all persons, regardless of age, gender, size, or health.

Personal Communication (PCS) facilities used by Dish Wireless in this area will potentially operate within a frequency range of 600 to 2100 MHz. Facilities typically consist of: 1) electronic transceivers (the radios or cabinets) connected to wired telephone lines; and 2) antennas that send the wireless signals created by the transceivers to be received by individual subscriber units (PCS telephones). Transceivers are typically connected to antennas by coaxial cables.

Because of the short wavelength of PCS services, the antennas require line-of-site paths for good propagation, and are typically installed above ground level. Antennas are constructed to concentrate energy towards the horizon, with as little energy as possible scattered towards the ground or the sky. This design, combined with the low power of PCS facilities, generally results in no possibility for exposure to approach Maximum Permissible Exposure (MPE) levels, with the exception of areas directly in front of the antennas.

FCC Compliance Requirement

A site is considered out of compliance with FCC regulations if there are areas that exceed the FCC exposure limits and there are no RF hazard mitigation measures in place. Any carrier which has an installation that contributes more than 5% of the applicable MPE must participate in mitigating these RF hazards.

916 UNION STREET FRONT FACADE



916 UNION STREET FRONT FACADE



916 UNION STREET FRONT FACADE



916 UNION STREET VIEW
FROM CLINTON AVENUE



916 UNION STREET VIEW
FROM CLINTON AVENUE



916 UNION STREET VIEW FROM SAN JOSE AVENUE



916 UNION STREET VIEW FROM SAN JOSE AVENUE



916 UNION STREET VIEW FROM UNION STREET AT ADJACENT
2-STORY APARTMENT

