



# Alameda Point Study Session

May 2025



Pacific Fusion was  
founded in 2023.

We are working to power  
the world with affordable  
clean energy.



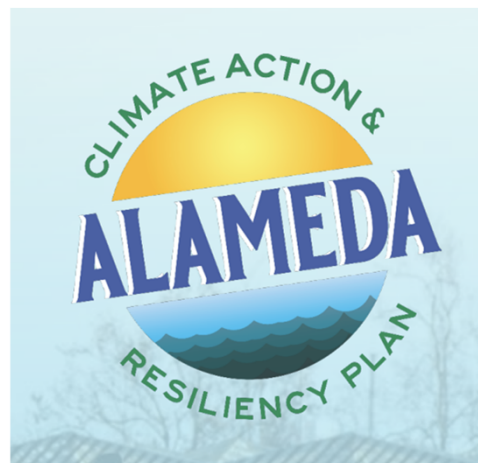
Pacific Fusion



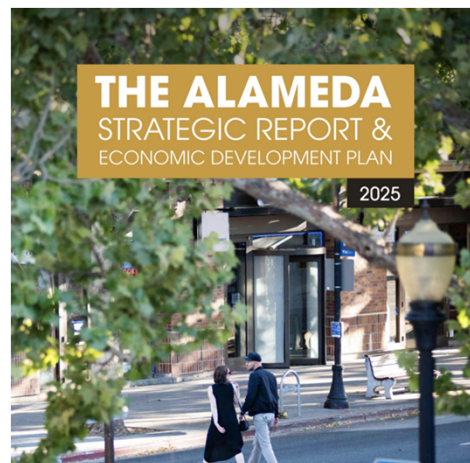
# Why we want to be in Alameda.

We admire Alameda's commitment to action regarding climate change & economic growth, especially as outlined in the following:

## Climate Action & Resiliency Plan



## Economic Development Strategic Plan



We'd love to keep building in the Bay Area.



Pacific Fusion

Our company's mission and this project align with the priorities outlined in *Alameda's Climate Action & Resiliency Plan*

---

Goal 1:

Carbon neutrality

---

Goal 2:

Community resilience

---

Goal 3:

Community education and activation

---

Goal 4:

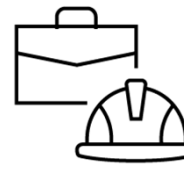
City leadership



# What this project would bring to Alameda:



\$1 billion investment



250 permanent jobs + hundreds more jobs to the region



Environmental improvements on Alameda Point



Puts Alameda at the forefront of global fusion innovation



Education/STEM partnerships







Fusion is what  
powers the sun  
and our stars.

It is closer than  
ever to powering  
our planet.



Pacific Fusion

---

## Safe

Cannot melt down.  
No long-lived radioactive waste.

---

## Clean

No carbon emissions.

---

## On-demand

Provides dispatchable firm power.

---

## Nearly free fuel

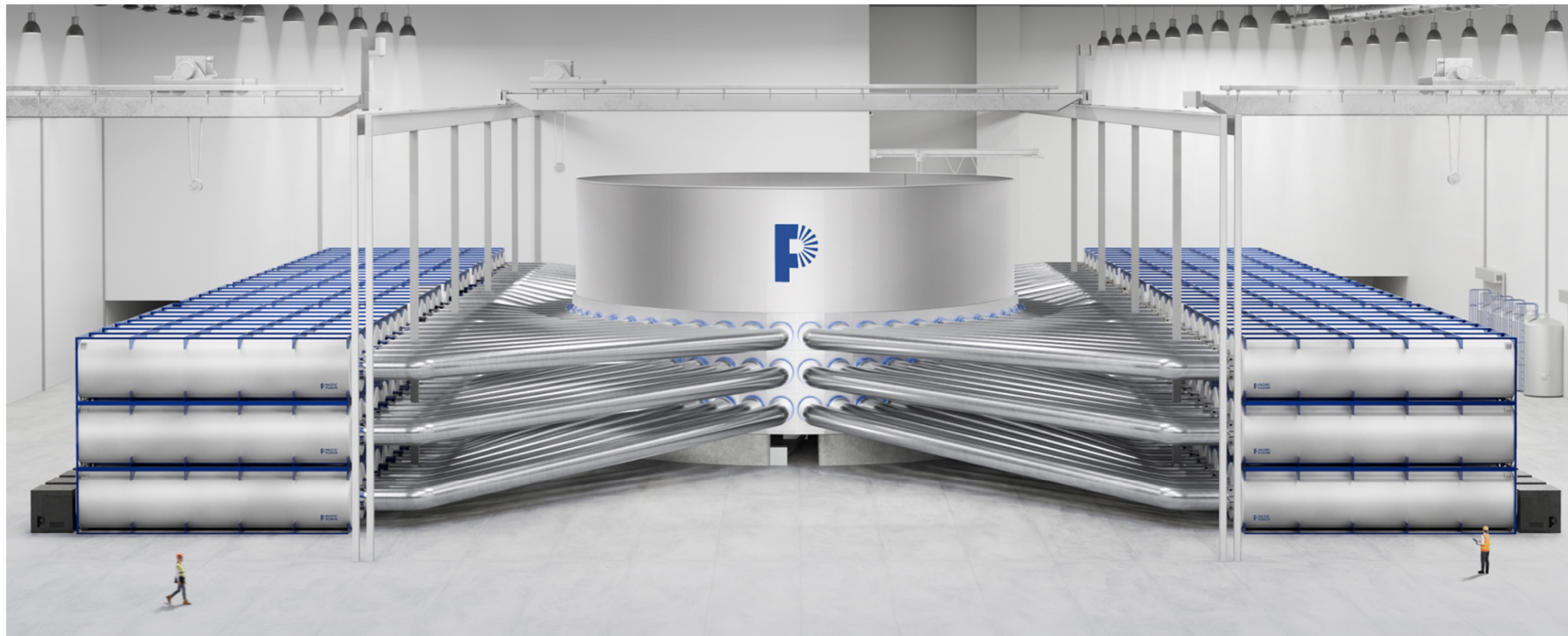
Fuel is widely available.

Astronomical energy density—millions of  
times higher than chemical reactions.



# The Demonstration System we hope to build in Alameda is a research facility, like the NIF.

It is not a power plant. It will not have noise or vibration impacts on the community.



Pacific Fusion



# Safety is our top priority.

Pacific Fusion will comply with all requirements set forth by the Radiologic Health Branch in California's Department of Public Health, which ensures radiological materials are regulated, shielded, and monitored for safe operations.

**This is comparable to hospitals and other research facilities.**



Pacific Fusion



**Hospitals safely use radiological materials for cancer treatment.**

Major medical centers routinely employ high-activity gamma emitters to destroy cancer cells.



**Universities safely use radiological materials for research.**

Universities use radioisotopes in devices such as tritium-filled neutron generators for materials testing and bacterial sterilization studies.



# Your Design Team

**Pacific Fusion**



Courtney Richardson



Alex Doniach

**Hines**



Mario Tjia



Shawn Hardy



Mark Pojar



Matthew Breitel



Matt Stokes



David Robinson



Jenny Lui

**HPA - Architectural**



Teresa Goodwin



Jun Lee



Hannah Lehman

**BKF - Civil Engineers**



Chris Mills



Mike Witt

**Green Design - Landscape Arch.**



Barbara Hatch



Kienan Herman

**Vox Populi**



Becca Perata

**Meyers+ - Mech., Elec., Plumb.**



Susie See



Wayne Gaw



Anne Billig



Jonathan Larson



Ethan Gould



Adam Kyle

**Thornton Tomasetti - Structural**



Theresa Curtis



Mark Koenigs





# This project will be a catalyst for future development of Alameda Point

We are coordinating community engagement events & study sessions. The Development Team will incorporate community feedback into the project design.

## Current schedule:

- 5/1: Townhall
- 5/12: Planning Board Study Session
- 5/31: Family Fusion Day

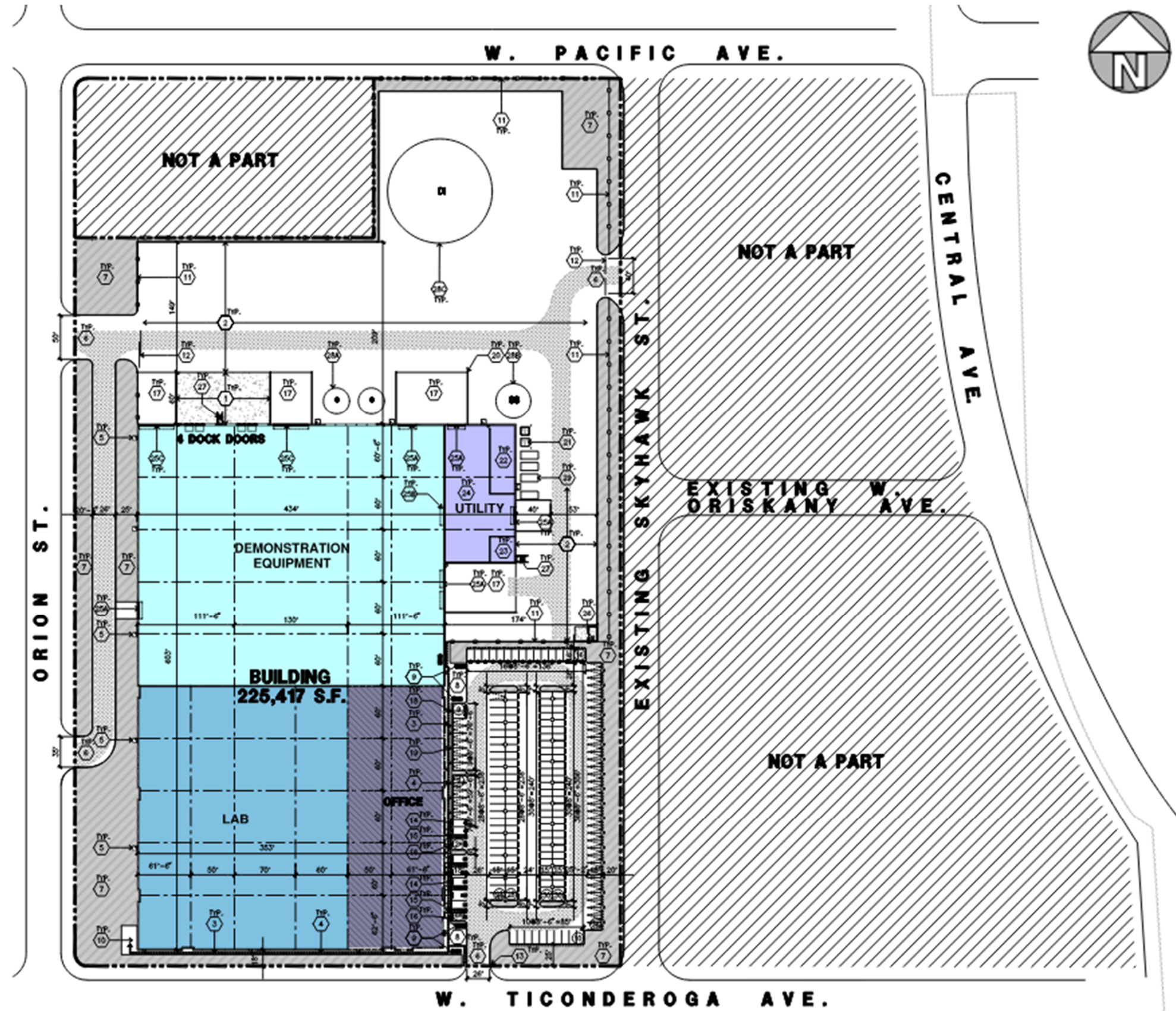




# Program

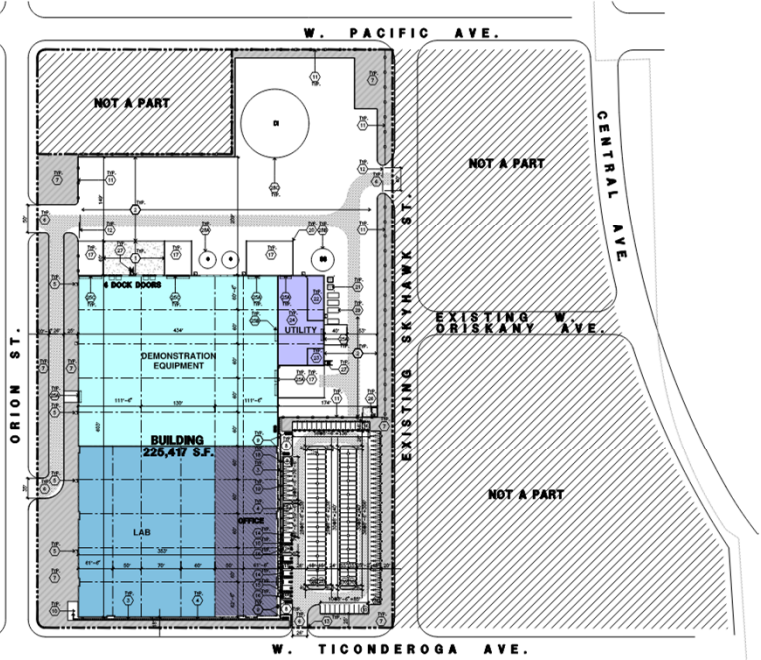
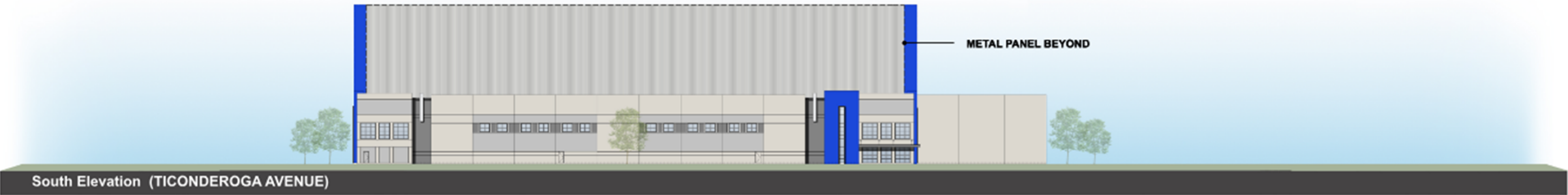
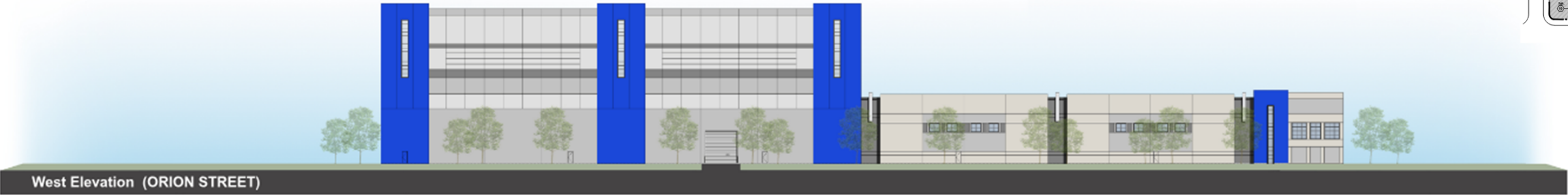
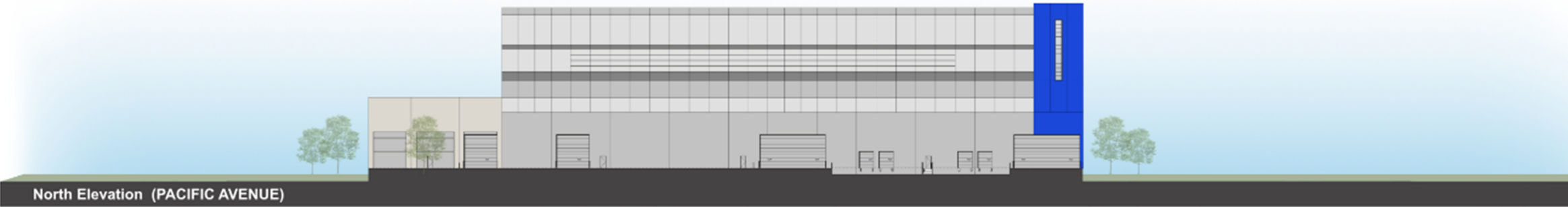
The proposed project will include the following uses, across approximately 13.2 acres:

- ~34,500 square feet of office and operational support space
- ~72,800 square feet of lab and testing space
- ~105,500 square feet of high-bay industrial R&D space where the Pulser is located and operated
- ~12,600 square feet of central utility space, including the electrical room and fire pump





# Building Elevations





# Inspiration



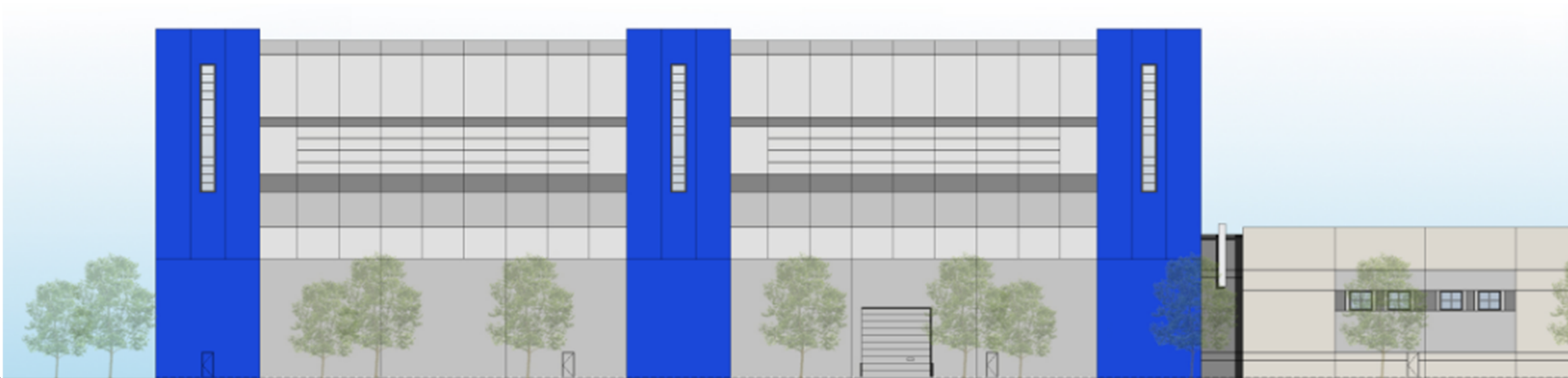
## East Elevation - Office



# Inspiration

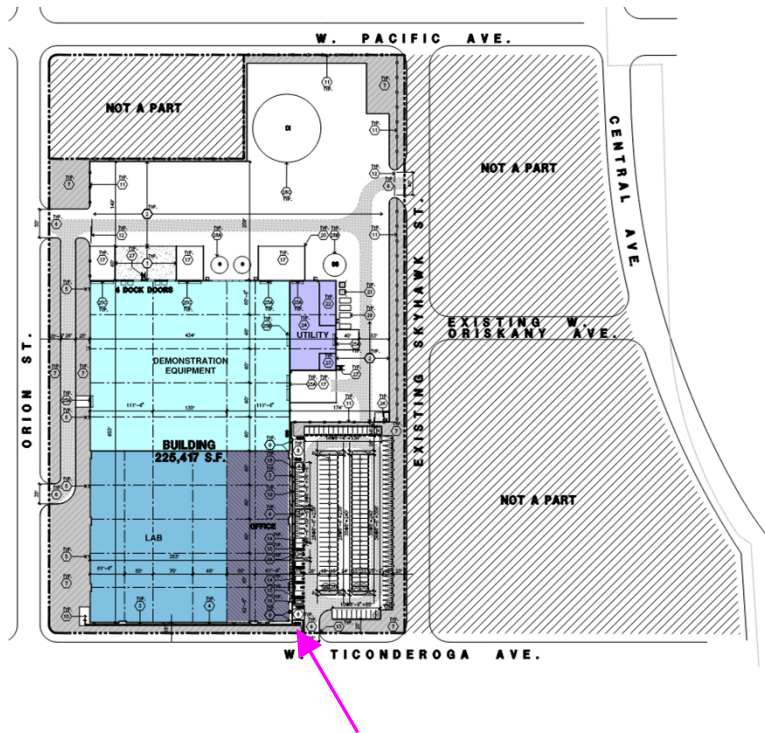


## West Elevation - Demonstration



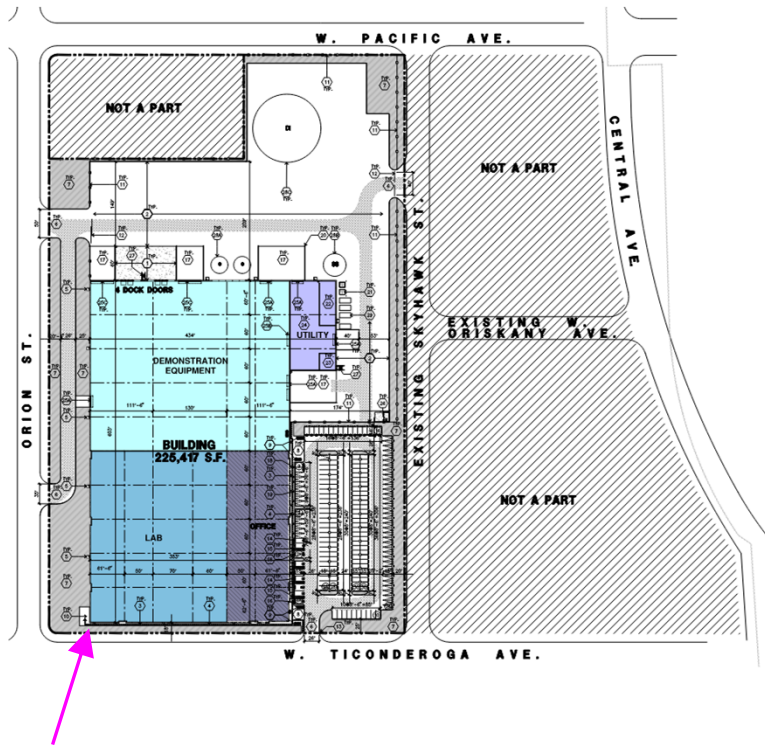


# Rendering South East Corner at Office Entrance





# Rendering South West Corner

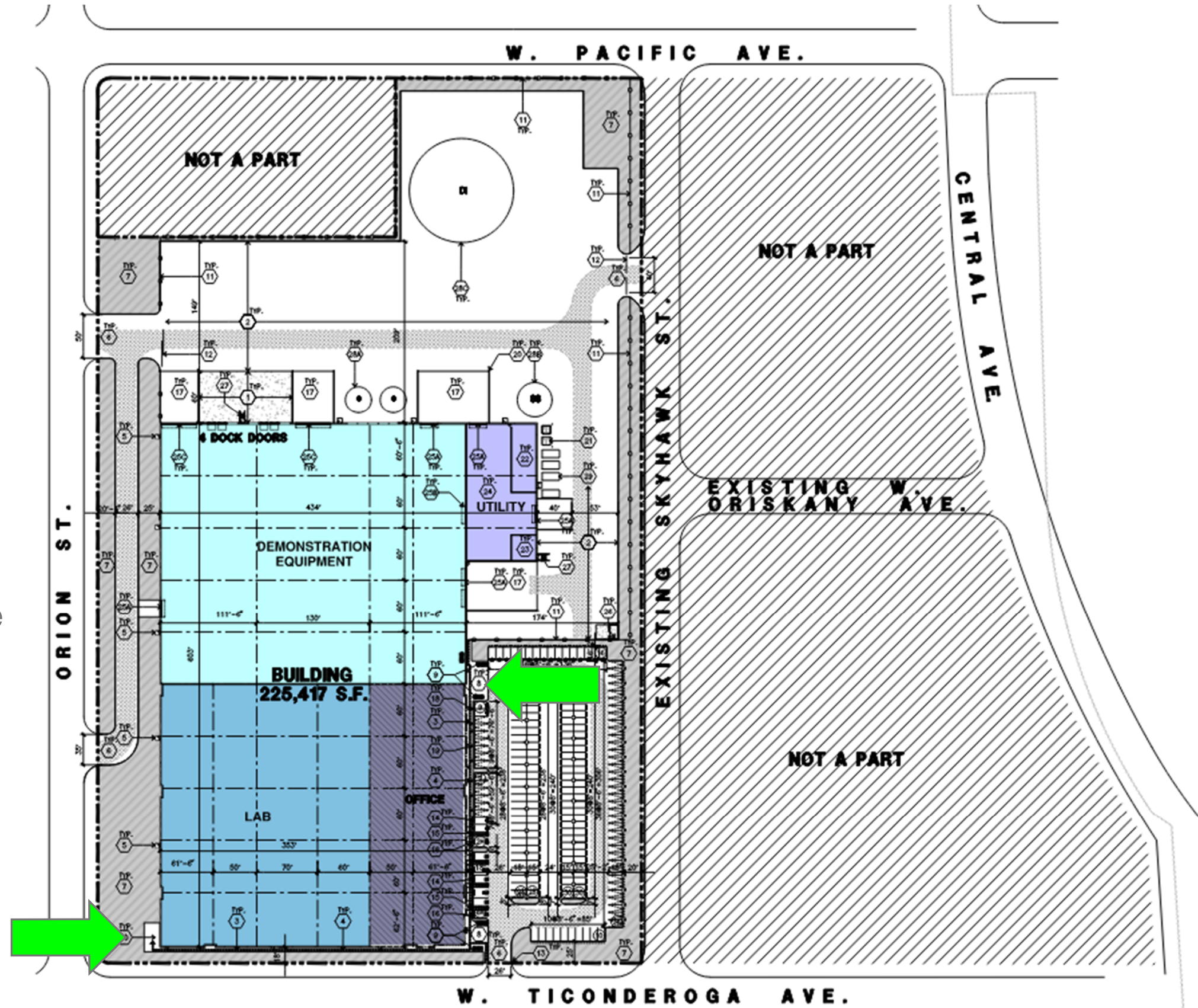




# Design Evolution in Progress

The following items are in progress:

- Sizing, location and design of exterior break area amenity spaces
- Confirm required parking, potential to add more auto parking onsite along fire lane on the west
- Confirm materiality and constructability, potential to replace high bay wall facade system with metal panel





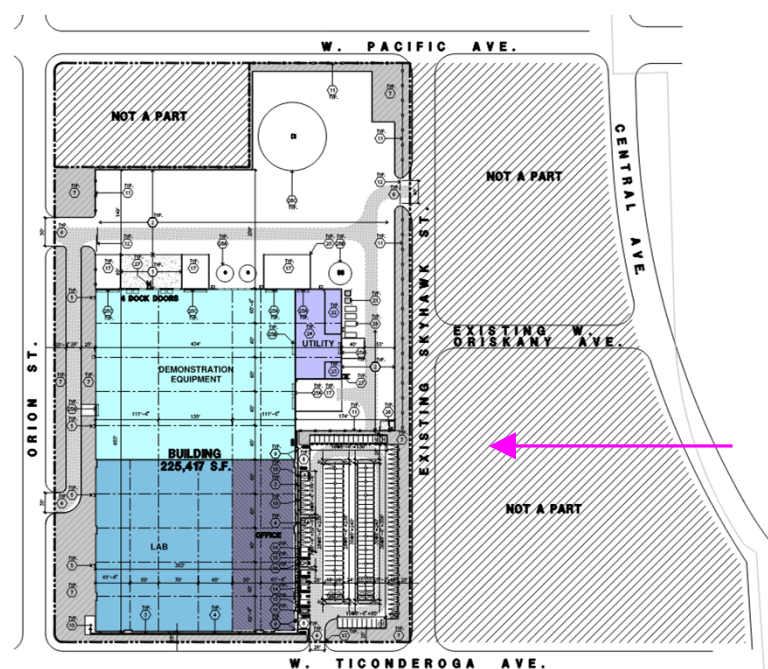
Thank you



Pacific Fusion



# Appendix: Aerial Rendering



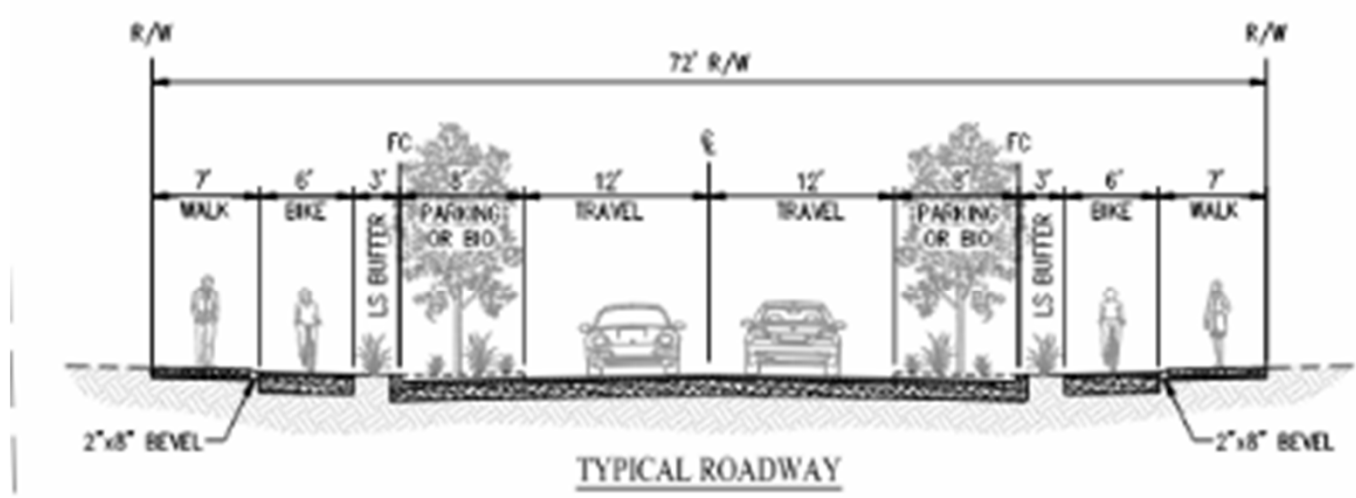
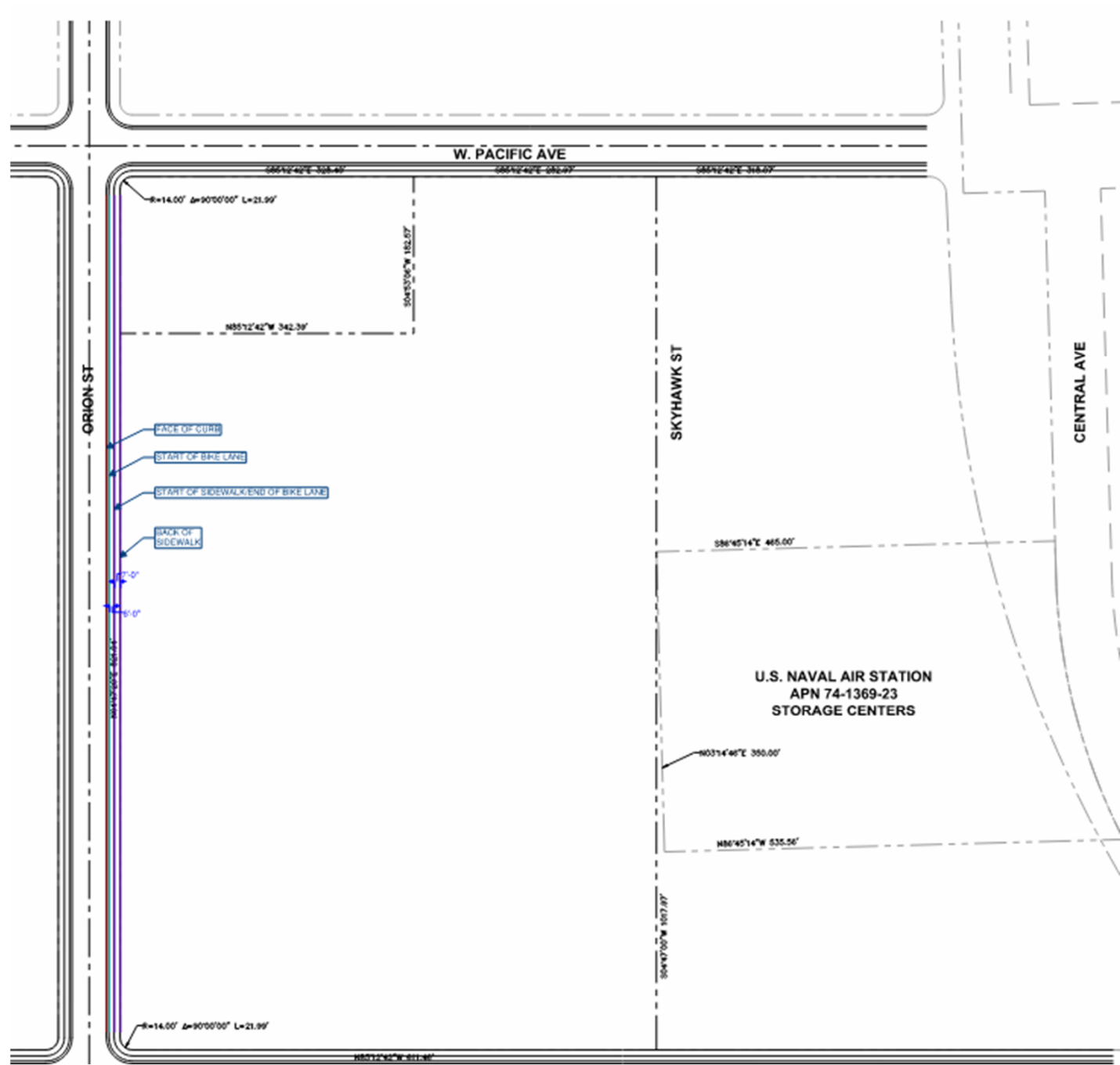


# Appendix: Ultimate Circulation





# Appendix: Typical Roadway



PACIFIC AVE, ORION ST AND TICONDEROGA AVE

