

# Alameda High School Kofman Stage Upgrades

---

Measure B

## Project Status:

- Dressing rooms complete
- Lighting and AV infrastructure complete

## Next Steps:

- Fire curtain under fabrication

## Challenges:

- Existing conditions required fire curtain redesign
- Long lead times for fire curtain, and hoists for fire curtain and main curtain



**Estimated Completion Date: Mid-November 2025**

**Soft Opening for School use only: December 2025**

**Open for Permitting: June 2026**

# Alameda High School Kofman Stage Upgrades

Measure B



Completed large dressing room



Completed standard dressing room



Completed new accessible toilet room

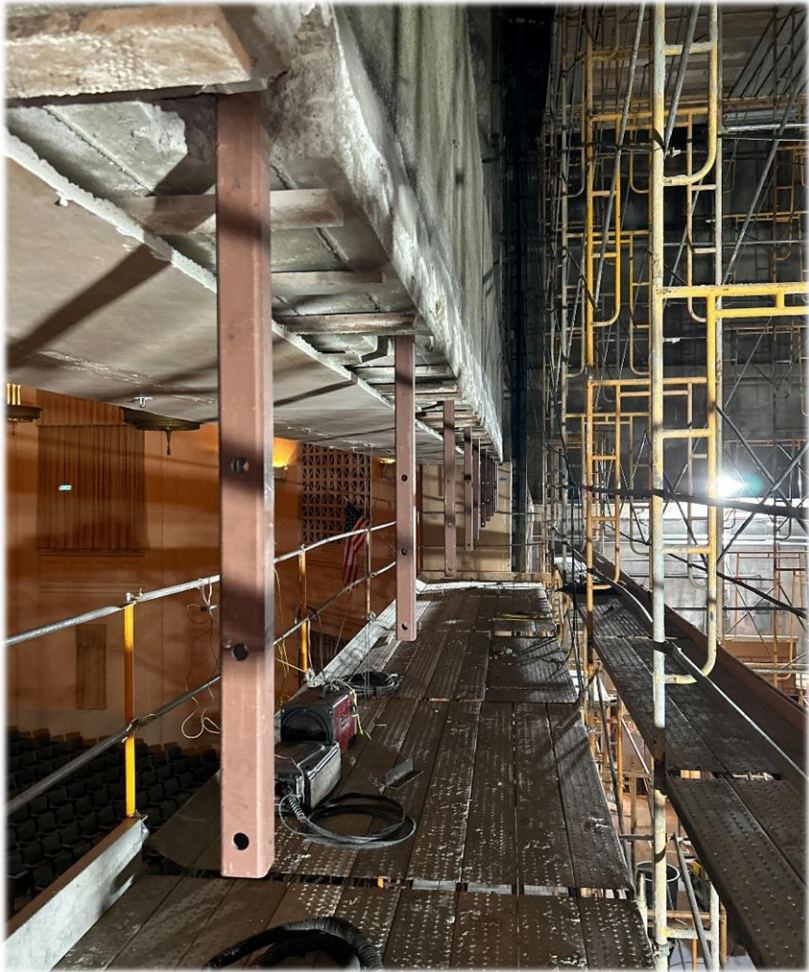


# Alameda High School Kofman Stage Upgrades

Measure B



View of scaffolding at stage



Fire curtain overlap wall extension above stage

# Alameda High School Swim Center

---

Measure B

## Project Status:

- Under ACEHD oversight, (Impacted Soil Delineation, Dewatering, etc.)
- Construction activities resumed after cleanup delay

## Next Steps:

- Under ACEHD oversight, develop a cleanup plan and execute it

## Challenges:

- Impacted soil found during demolition
- Testing and Soils Management Plan development to dispose of impacted soil
- ACEHD oversight: turnaround time and number of deliverables requested
- Schedule and cost impacts to date

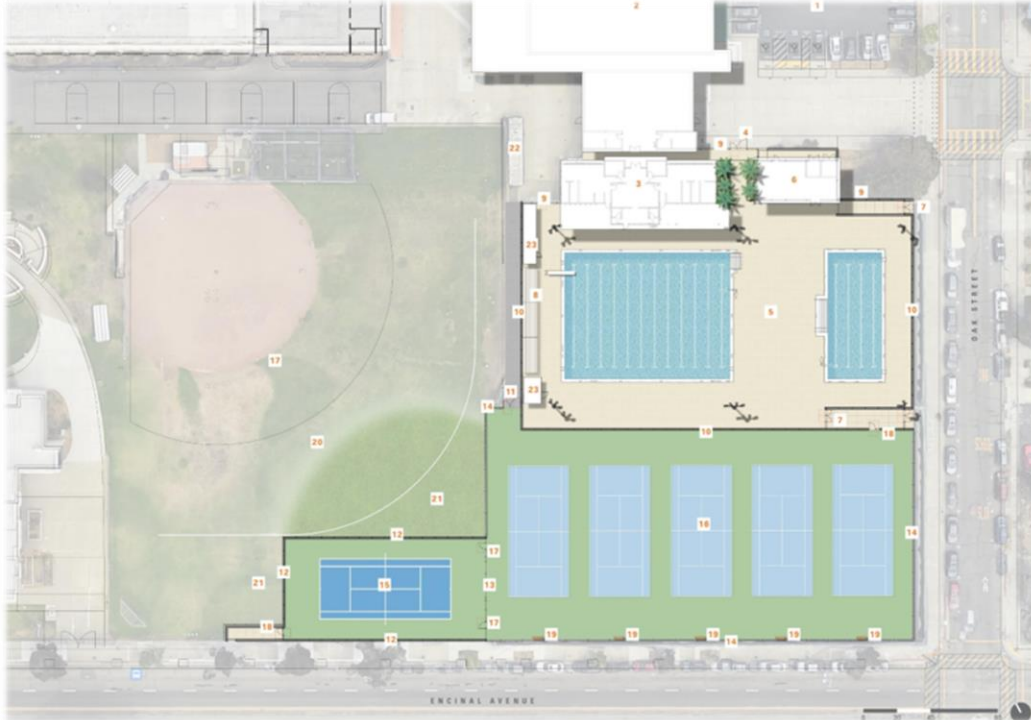


**Estimated Completion Date: June 2026**



# Alameda High School Swim Center

Measure B



Schematic Design



Current State of the Site

# Encinal Jr/Sr High School Stadium and Field Renovation

---

Measure B

## Project Status:

- Fencing complete
- Soccer/football field complete
- Lights, sound system, score board complete

## Next Steps:

- Synthetic Field Turf installation

## Challenges:

- Delayed project start due to Bay Conservation & Development Commission (BCDC)
- Coordination with City on Storm Drain relocation
- Site being by the bay = Dewatering impacts



**Estimated Completion Date: Mid-November 2025**

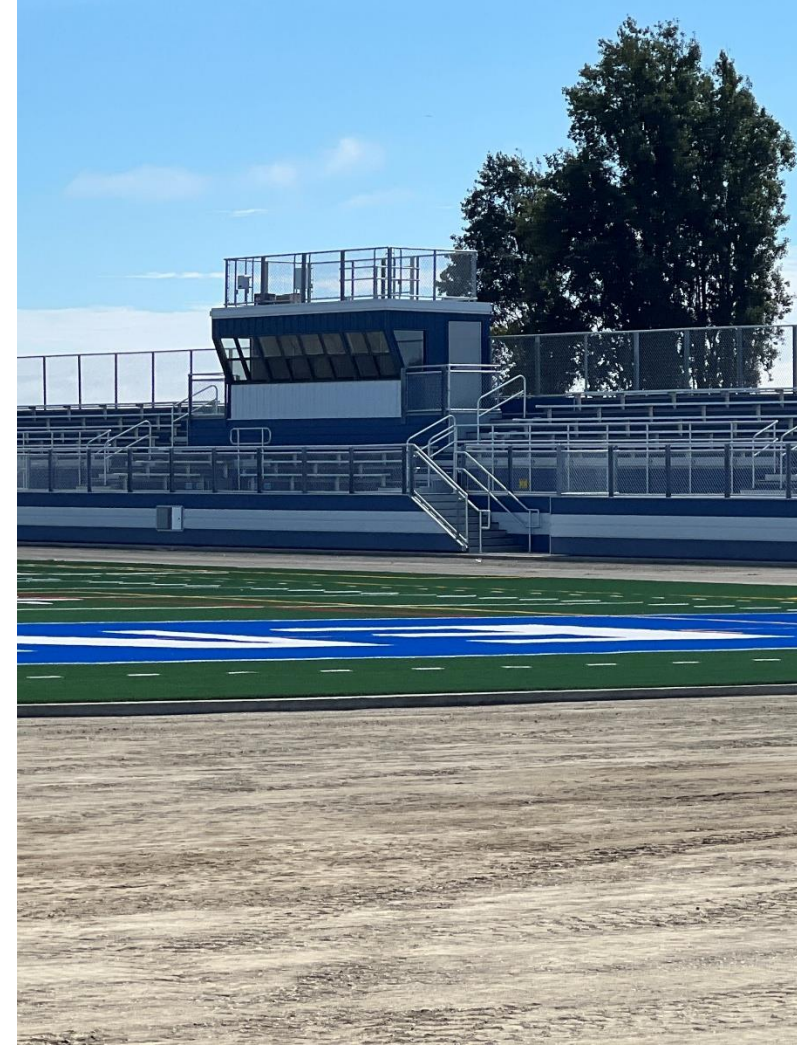
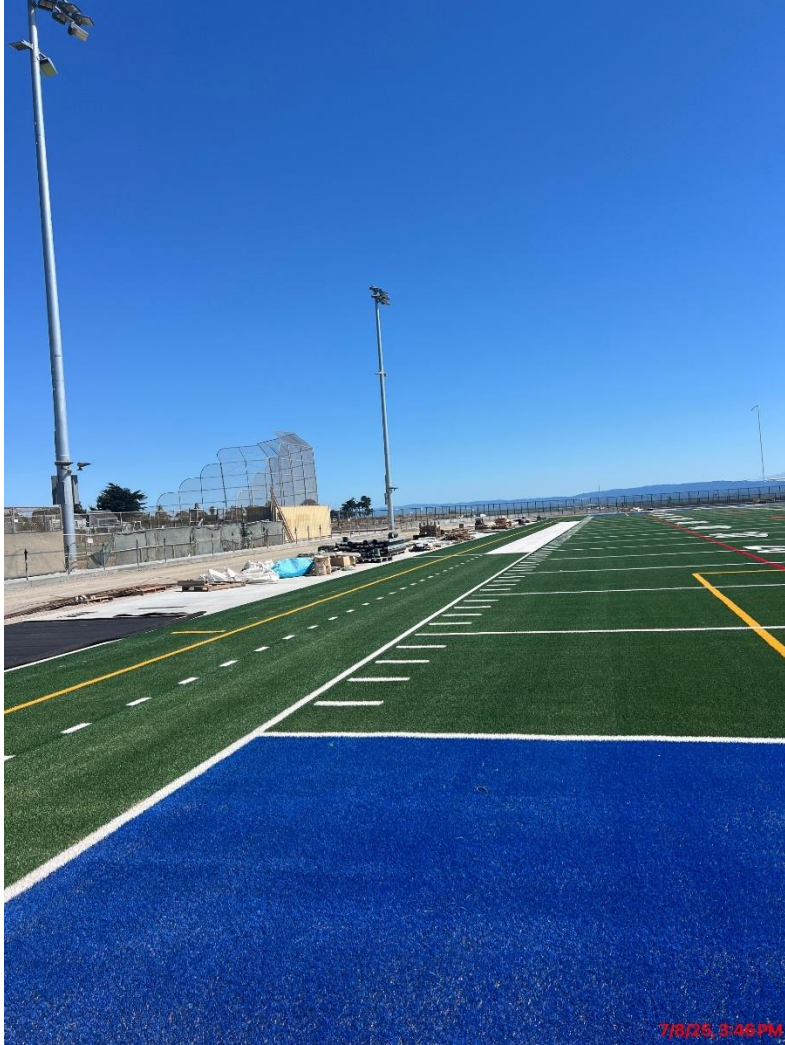
**Soft Opening for School use only: December 2025**

**Open for Permitting: June 2026**



# Encinal Jr/Sr High School Stadium and Field Renovation

Measure B



# Wood Middle School New Construction

---

Measure B

## Project Status:

- Building 100 (Admin/Media Center) and Building 300 (Gym) : Framing walls, electrical rough-in
- Building 400 (Classrooms): Steel structure

## Challenges:

- Responding to neighbor questions and complaints
- DTSC review
- City's Grand Street improvement projects starting

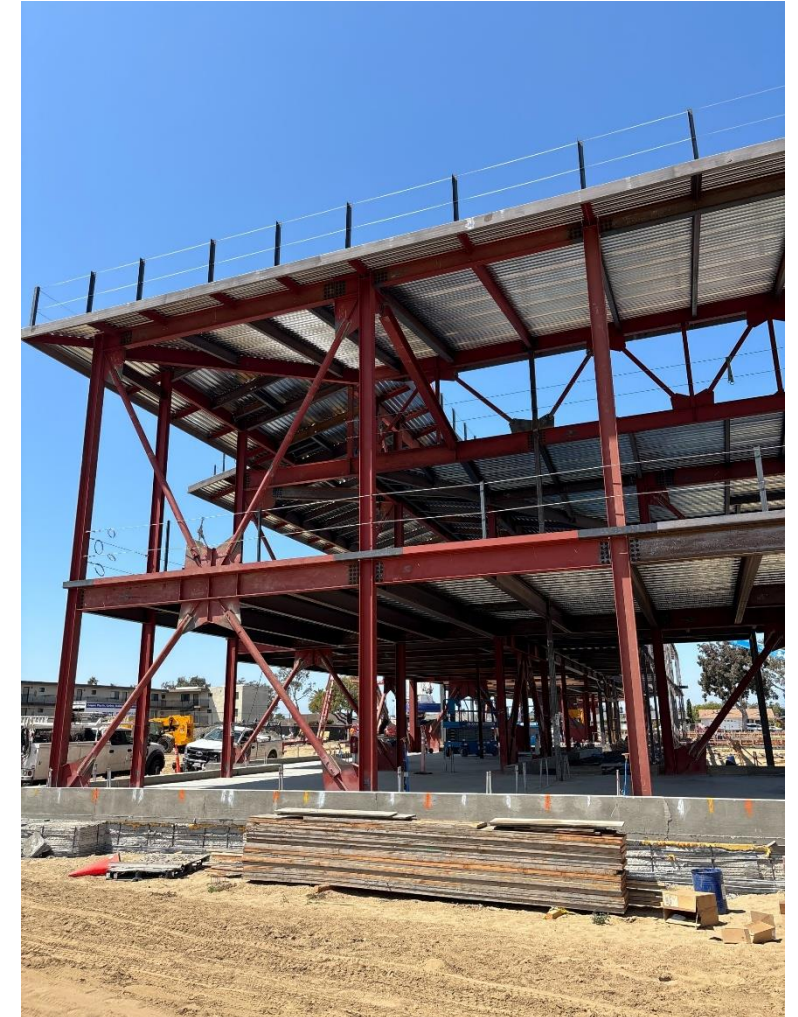


**Estimated Completion Date: Summer 2026**



# Wood Middle School New Construction - Classrooms

Measure B



# Otis Elementary School New Construction

---

Measure B

## Project Status:

- DSA reviewing design
- Coordinating with City of Alameda
- Contractor performing Preliminary Services

## Next Steps:

- Planning for the move

## Challenges:

- City Storm Drain Relocation Coordination
- Potential prolonged approval process from Department of Toxic Substances Control (DTSC)
- Potential neighborhood complaints during pile driving



**Estimated Completion Date: Summer 2028**

**Otis move to the Temp Campus: June 2026**



# Otis Elementary School New Construction

Measure B



Conceptual rendering: Campus Entry



Conceptual rendering: Ariel View



# Encinal Jr/Sr High School New Gymnasium

---

Measure B

## Project Status:

- Board recently approved Schematic Design

## Next Steps:

- Submit to Division of the State Architect (DSA) this fall

## Challenges:

- Potential extensive dewatering during excavation



**Estimated Completion Date: Fall 2027**

# Encinal Jr/Sr High School New Gymnasium

Measure B



Conceptual Rendering: Gym Interior



Conceptual Rendering: View from the Stadium



Rendering: Weight Room w/ View to Stadium