

# TENTATIVE MAP

## TRACT 8337 - OAKLAND INNER HARBOR

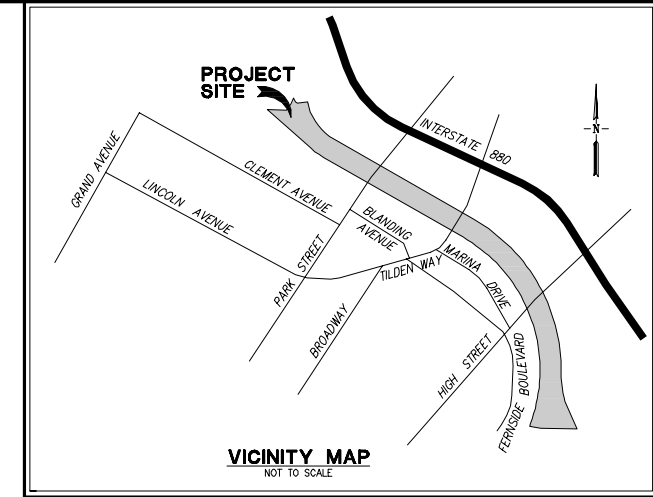
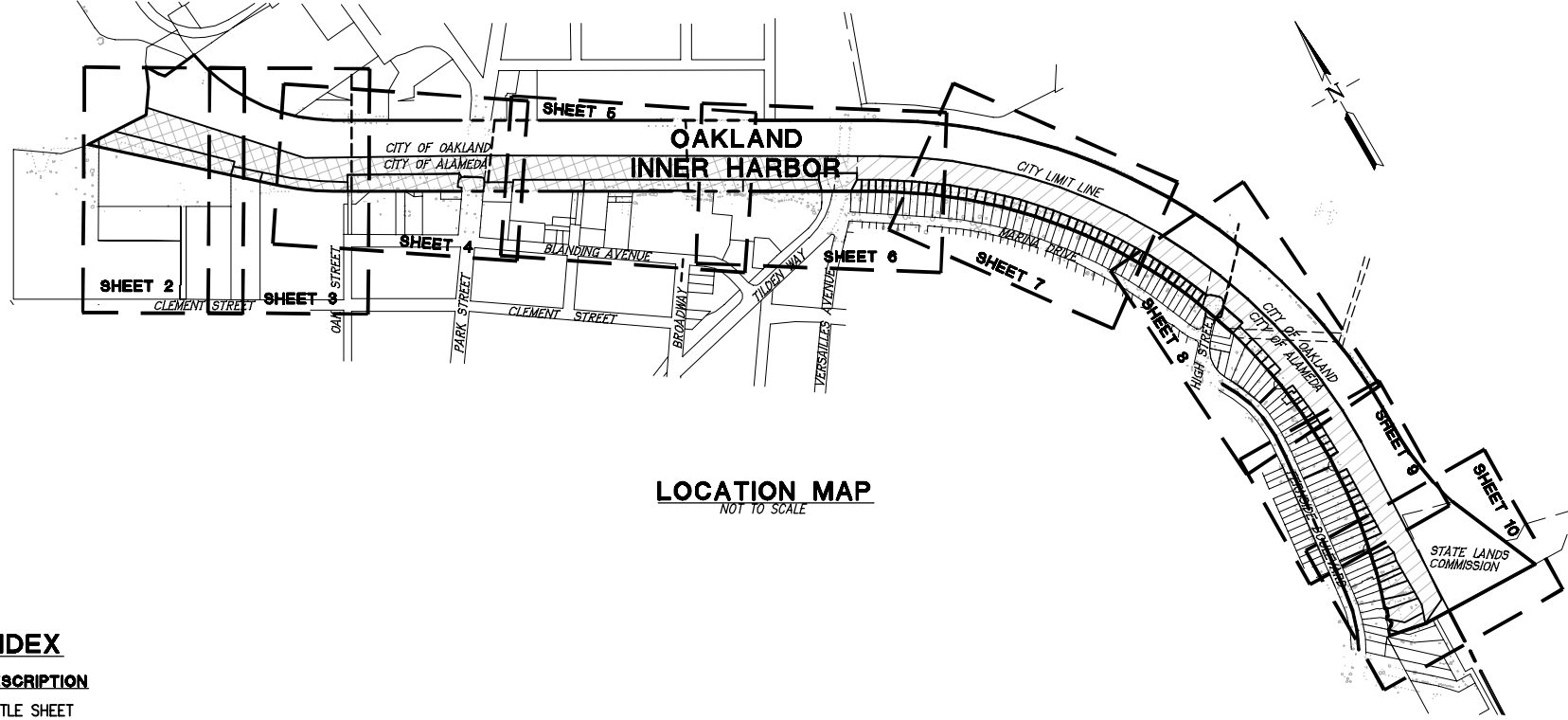
CITY OF ALAMEDA, ALAMEDA COUNTY, CALIFORNIA  
FOR: CITY OF ALAMEDA

### LEGEND

PROPOSED	DESCRIPTION	EXISTING
	TRACT BOUNDARY	
	LOT LINE	
	CITY LIMIT LINE	
	ESTUARY ZONING	

### ABBREVIATIONS

APN	ASSESSOR'S PARCEL NUMBER
OR	OFFICIAL RECORDS
SF	SQUARE FEET



### GENERAL NOTES

1. OWNER: U. S. ARMY CORPS OF ENGINEERS  
1455 MARKET STREET, 16TH FLOOR  
SAN FRANCISCO, CA 94103  
(415) 503-6988
2. SUBDIVIDER: CITY OF ALAMEDA  
2263 SANTA CLARA AVENUE, ROOM 280  
ALAMEDA, CA 94501  
(510) 747-4763  
CONTACT: MR. ANDRICO PENICK
3. CIVIL ENGINEER: RUGGERI-JENSEN-AZAR  
4690 CHABOT DRIVE, SUITE 200  
PLEASANTON, CA 94588  
(925) 227-9100  
CONTACT: MR. EDDIE SIEU
4. ASSESSOR'S PARCEL NUMBER: NOT APPLICABLE
5. PROPERTY DESCRIPTION: OAKLAND INNER HARBOR AS SHOWN ON THE RECORD OF SURVEY (R/S NO. 1245) FILED IN BOOK 18 OF RECORD OF SURVEYS AT PAGE 63, RECORDS OF ALAMEDA COUNTY.
6. CURRENT USE: WATER ORIENTED USES
7. PROPOSED USE(S): NO CHANGES IN USE(S) ARE PROPOSED
8. EXISTING ZONING: ESTUARY PORTION AND PORTION UNDEFINED
9. PROPOSED ZONING: ESTUARY OVER AREA WITH UNDEFINED ZONING
10. GROSS SITE AREA: 41.2± ACRES
11. TOTAL NUMBER OF PROPOSED LOTS: 99
12. TOPOGRAPHIC INFORMATION SHOWN HEREON IS BASED ON AERIAL TOPOGRAPHIC SURVEY PREPARED SEPTEMBER 2015.
13. NO IMPROVEMENTS, STREET UTILITIES, LANDSCAPING OR GRADING IS PROPOSED WITH THIS SUBDIVISION.
14. NO PUBLIC AREAS ARE PROPOSED FOR DEDICATION.
15. THE BOUNDARY INFORMATION SHOWN HEREIN IS PRELIMINARY AND IS ONLY BASED ON RECORD INFORMATION WITHOUT THE BENEFIT OF A FIELD SURVEY. A FINAL MAP WILL BE PREPARED IN SUBSTANTIAL CONFORMANCE TO THE APPROVED TENTATIVE MAP AND THE REQUIREMENTS OF THE SUBDIVISION MAP ACT AND WILL BE BASED ON A FIELD SURVEY CONFORMING TO THE REQUIREMENTS OF THE LAND SURVEYORS ACT. THE FINAL MAP WHEN FILED FOR RECORD WITH THE ALAMEDA COUNTY RECORDER WILL LEGALLY CREATE THE LOTS SHOWN WITHIN THE FINAL MAP.

### SHEET INDEX

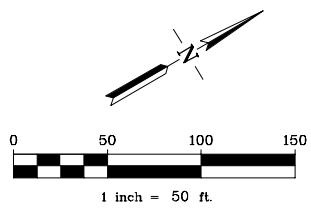
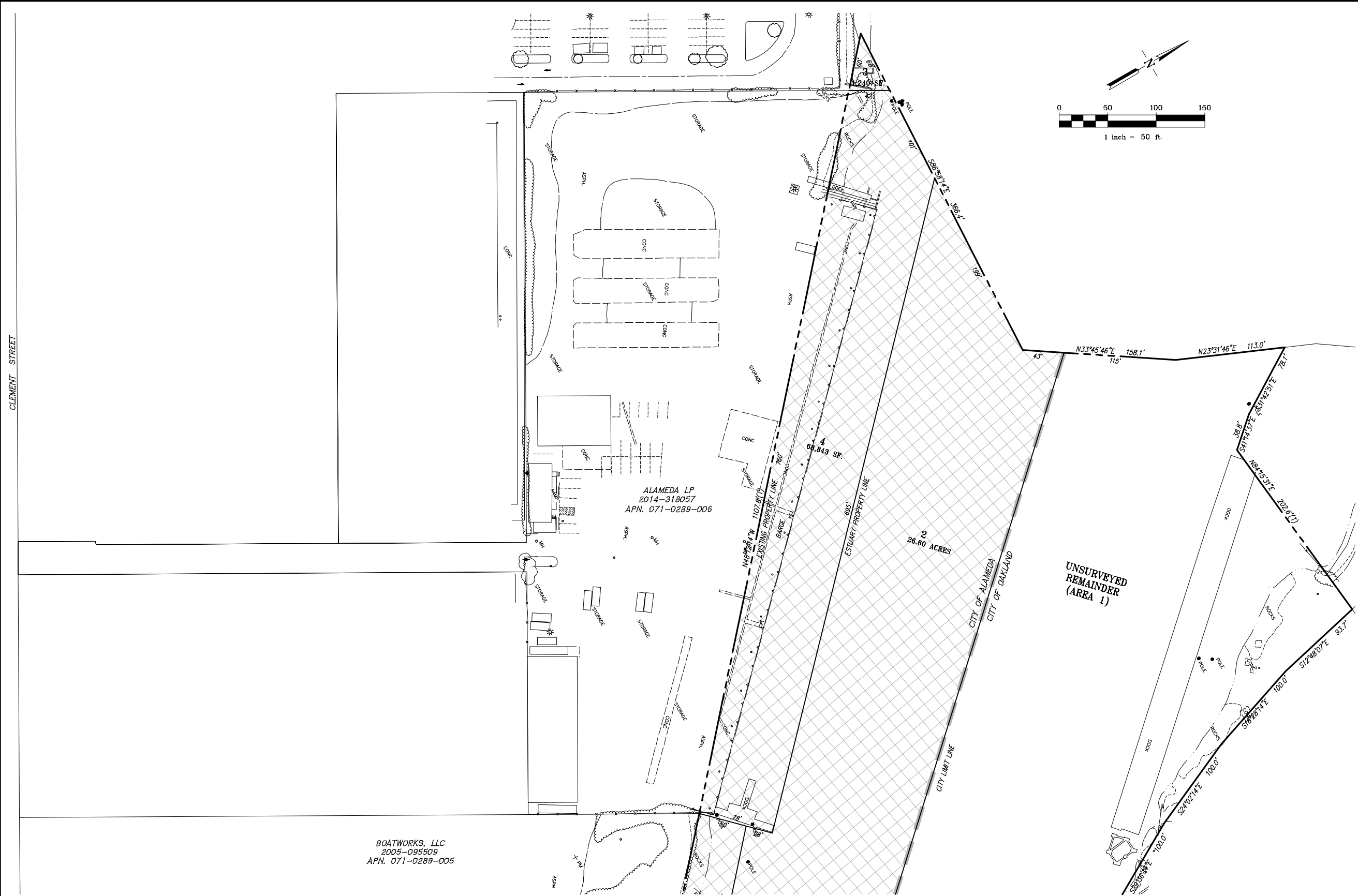
SHEET NO.	DESCRIPTION
1	TITLE SHEET
2	LOTING PLAN
3	LOTING PLAN
4	LOTING PLAN
5	LOTING PLAN
6	LOTING PLAN
7	LOTING PLAN
8	LOTING PLAN
9	LOTING PLAN
10	LOTING PLAN

G:\WORK\151094\151094\FILES\02-PLANNING\TEMP-MAP\151094-1 TITLE SHEETS\08/09/2016 2:29:58 PM JOHN KNEZOVICH



**RUGGERI-JENSEN-AZAR**  
ENGINEERS • PLANNERS • SURVEYORS  
4690 CHABOT DRIVE, SUITE 200 • PLEASANTON, CA 94588  
PHONE: (925) 227-9100 FAX: (925) 227-9300

G:\14282015\151094\CAD FILES\02-PLANNING\TEXT-MAP\151094-2 LOTTING PLAN.DWG 9/8/2016 3:28:35 PM JOHN ANEZONICH



BOATWORKS, LLC  
2005-095509  
APN. 071-0289-005

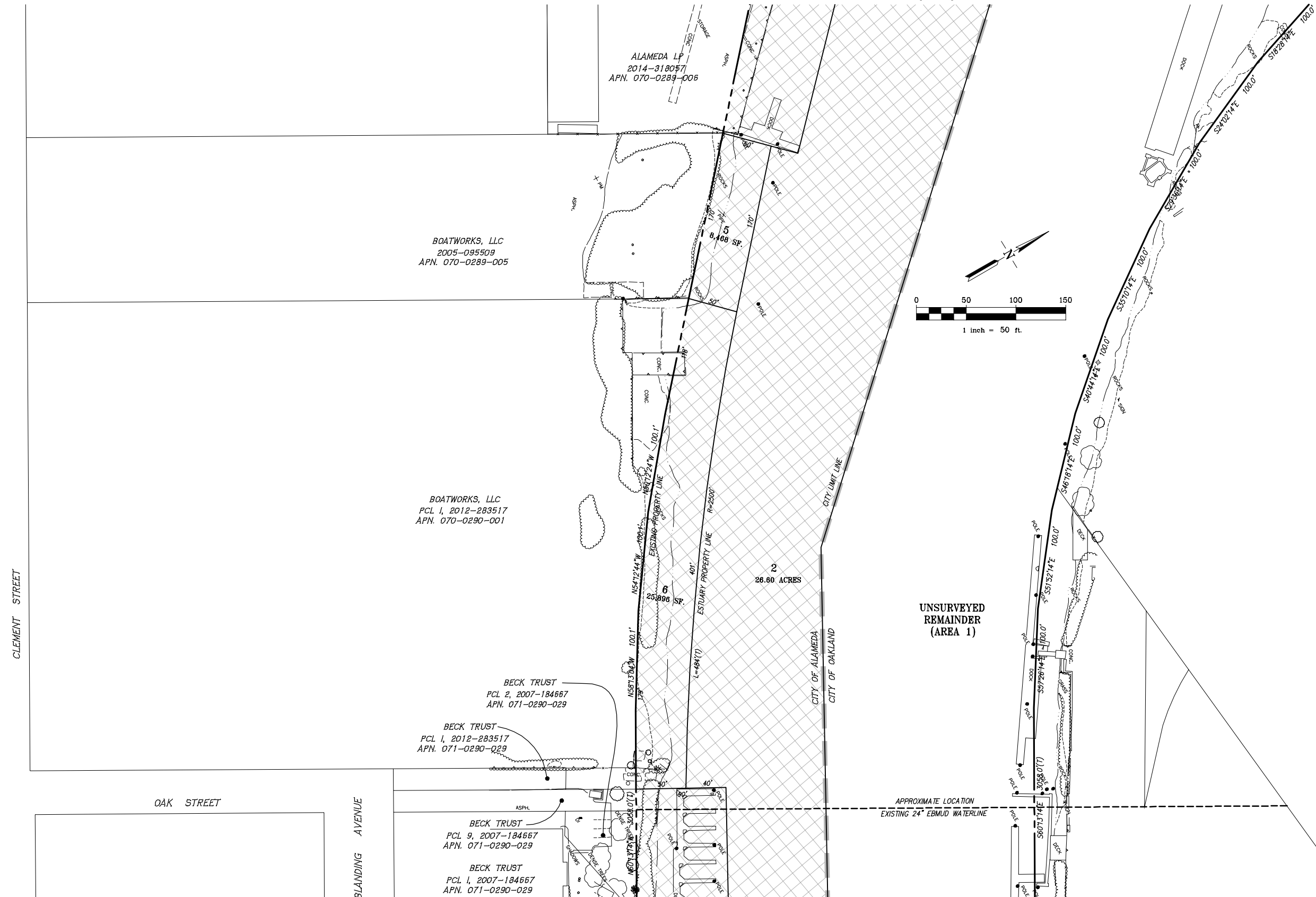
ALAMEDA LP  
2014-318057  
APN. 071-0289-006

SEE SHEET 3

**LOTING PLAN**  
**TRACT 8337 - OAKLAND INNER HARBOR**  
 CITY OF ALAMEDA, ALAMEDA COUNTY, CALIFORNIA  
 FOR: THE CITY OF ALAMEDA

**RJA**  
**RUGGERI-JENSEN-AZAR**  
 ENGINEERS • PLANNERS • SURVEYORS  
 4690 CHABOT DRIVE, SUITE 200 • PLEASANTON, CA 94588  
 PHONE: (925) 227-9100 FAX: (925) 227-9300

SEE SHEET 2



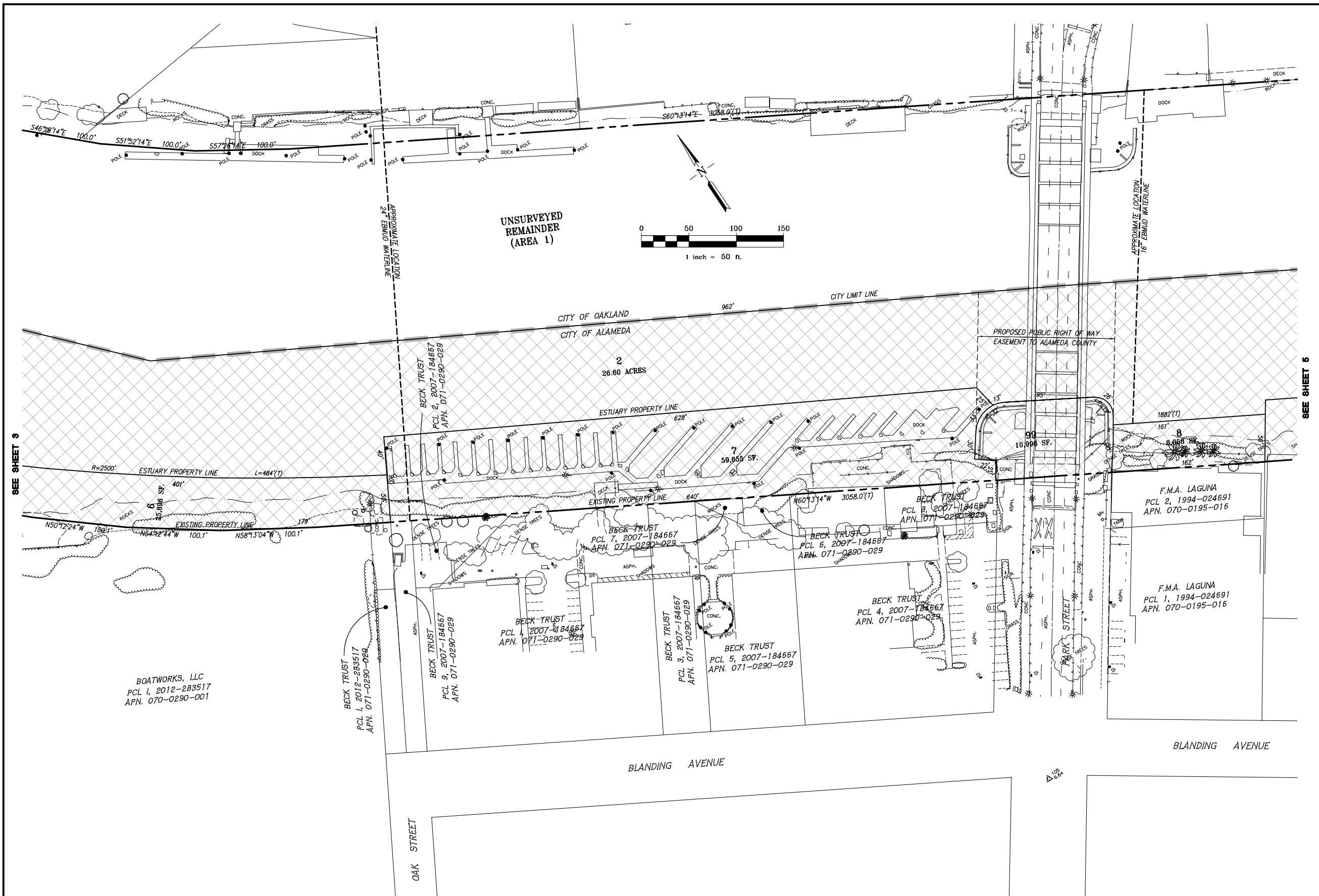
UNSURVEYED  
REMAINDER  
(AREA 1)

SEE SHEET 4

**LOTING PLAN**  
**TRACT 8337 - OAKLAND INNER HARBOR**  
 CITY OF ALAMEDA, ALAMEDA COUNTY, CALIFORNIA  
 FOR: THE CITY OF ALAMEDA

**RJA**  
**RUGGERI-JENSEN-AZAR**  
 ENGINEERS • PLANNERS • SURVEYORS  
 4690 CHABOT DRIVE, SUITE 200 • PLEASANTON, CA 94588  
 PHONE: (925) 227-9100 FAX: (925) 227-9300

C:\\_B2015\151094\CAD FILES\02-PLANNING\TEXT-MAP\151094-3 LOTING PLAN.DWG 9/8/2016 3:16:35 PM \_LDW\_KNEZDICH



G:\182015\151094\CAD FILES\102-PLANNING\TEXT-MAP\151094-4 LOTTING PLAN.DWG 9/8/2016 3:18:55 PM JOHN ANEZONICH

BOATWORKS, LLC  
 PCL 1, 2012-283517  
 APN. 070-0290-001

BECK TRUST  
 PCL 1, 2012-283517  
 APN. 071-0290-029

BECK TRUST  
 PCL 1, 2007-184667  
 APN. 071-0290-029

BECK TRUST  
 PCL 1, 2007-184667  
 APN. 071-0290-029

BECK TRUST  
 PCL 3, 2007-184667  
 APN. 071-0290-029

BECK TRUST  
 PCL 5, 2007-184667  
 APN. 071-0290-029

BECK TRUST  
 PCL 6, 2007-184667  
 APN. 071-0290-029

BECK TRUST  
 PCL 4, 2007-184667  
 APN. 071-0290-029

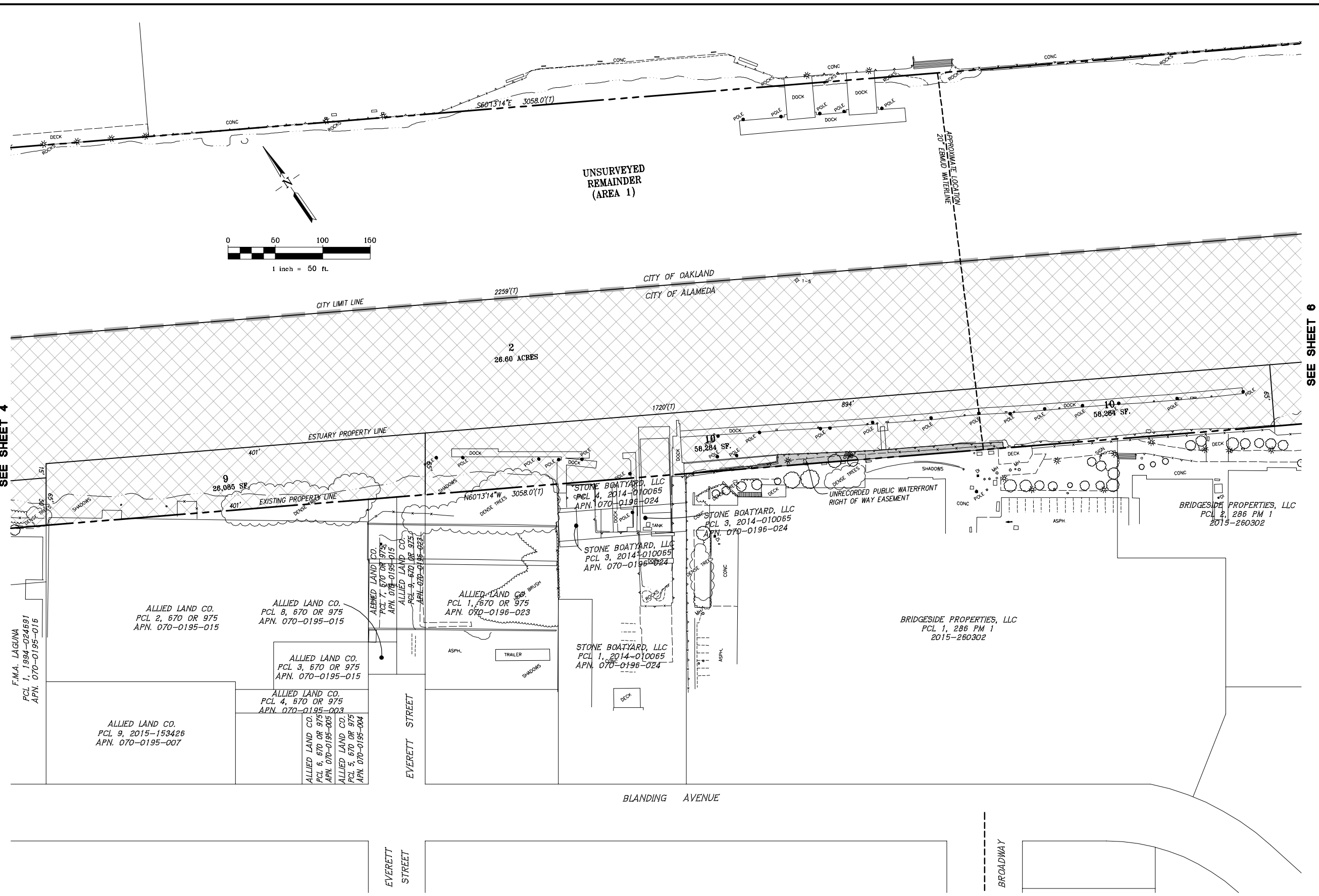
BECK TRUST  
 PCL 8, 2007-184667  
 APN. 071-0290-029

F.M.A. LAGUNA  
 PCL 2, 1994-024691  
 APN. 070-0195-016

F.M.A. LAGUNA  
 PCL 1, 1994-024691  
 APN. 070-0195-016

**LOTTING PLAN**  
**TRACT 8337 - OAKLAND INNER HARBOR**  
 CITY OF ALAMEDA, ALAMEDA COUNTY, CALIFORNIA  
 FOR: THE CITY OF ALAMEDA

**RJA**  
**RUGGERI-JENSEN-AZAR**  
 ENGINEERS • PLANNERS • SURVEYORS  
 4690 CHABOT DRIVE, SUITE 200 • PLEASANTON, CA 94588  
 PHONE: (925) 227-9100 FAX: (925) 227-9300



SEE SHEET 4

SEE SHEET 6

G:\2020\05\151024\CAD FILES\02-PLANNING\TEXT-MAP\151024-5 LOTTING PLAN.DWG: 9/8/2016 3:21:27 PM JOHN ANZICHICH

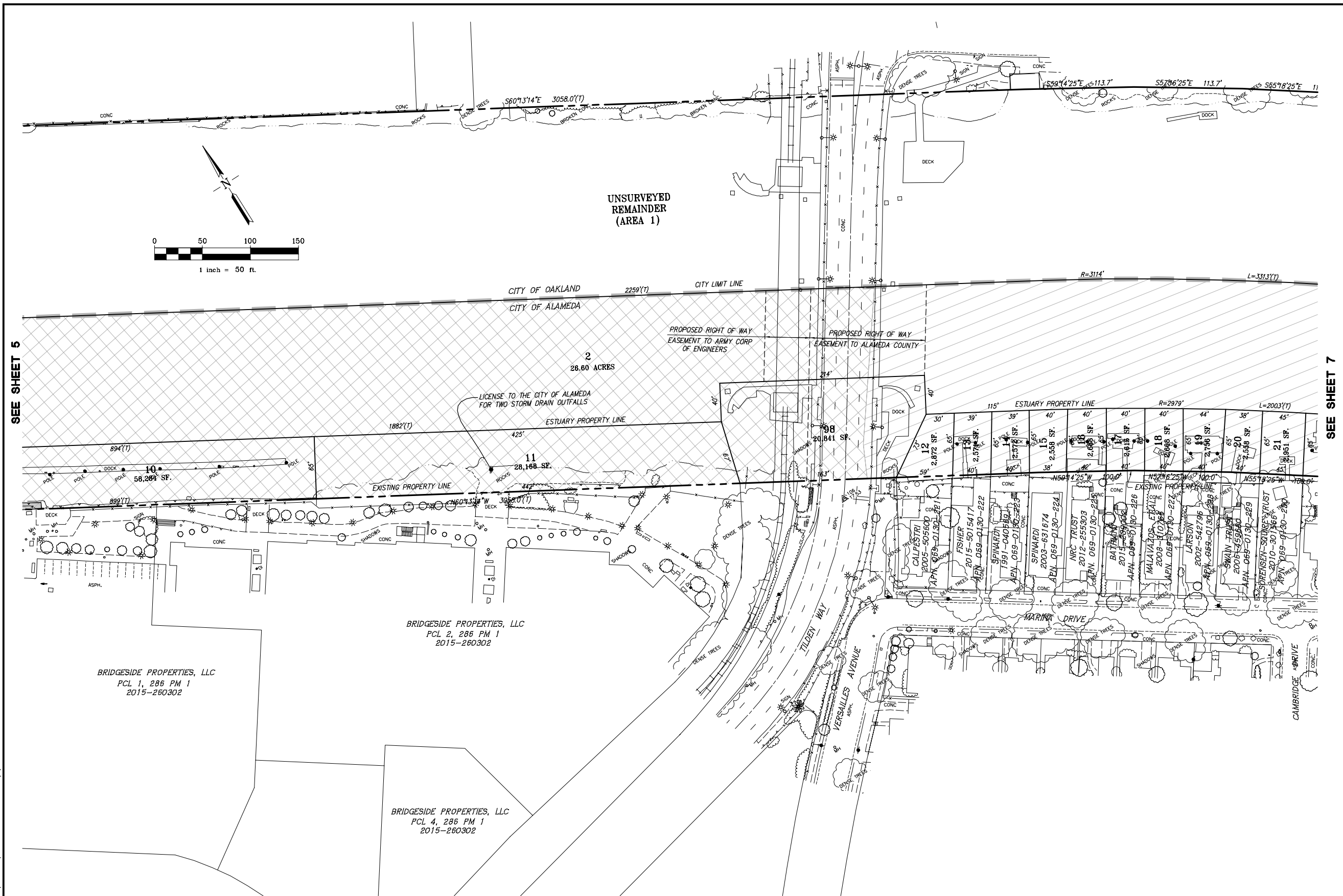
**LOTTING PLAN**  
**TRACT 8337 - OAKLAND INNER HARBOR**  
 CITY OF ALAMEDA, ALAMEDA COUNTY, CALIFORNIA  
 FOR: THE CITY OF ALAMEDA

**RJA**  
**RUGGERI-JENSEN-AZAR**  
 ENGINEERS • PLANNERS • SURVEYORS  
 4690 CHABOT DRIVE, SUITE 200 • PLEASANTON, CA 94588  
 PHONE: (925) 227-9100 FAX: (925) 227-9300

SEE SHEET 5

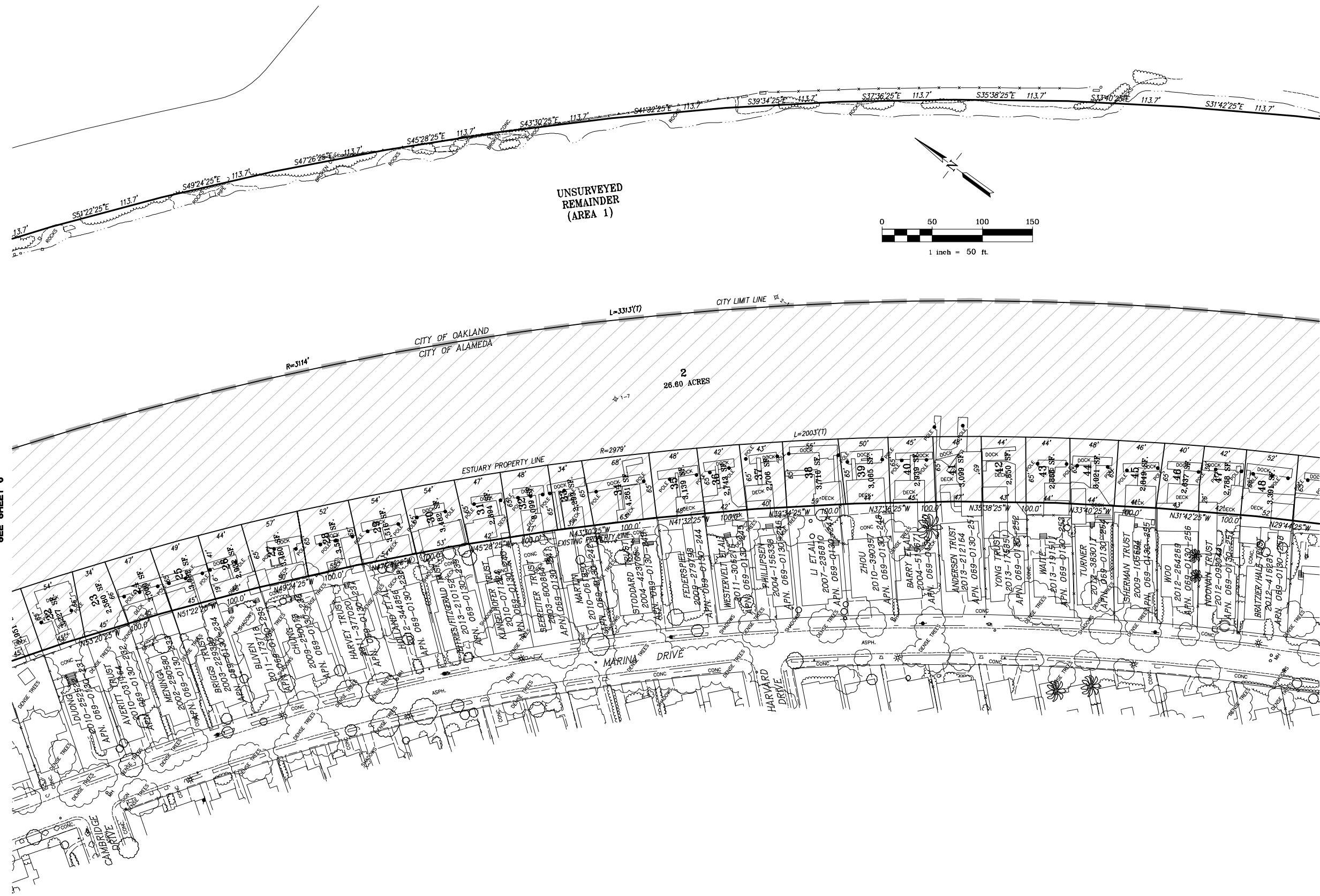
SEE SHEET 7

G:\1602015\15109A\CAD FILES\02-PLANNING\TEXT-MAP\15109A-4 LOTTING PLAN.DWG, 9/8/2016, 3:22:31 PM, JOHN KNEZICH



**LOTTING PLAN**  
**TRACT 8337 - OAKLAND INNER HARBOR**  
 CITY OF ALAMEDA, ALAMEDA COUNTY, CALIFORNIA  
 FOR: THE CITY OF ALAMEDA

**RJA**  
**RUGGERI-JENSEN-AZAR**  
 ENGINEERS • PLANNERS • SURVEYORS  
 4690 CHABOT DRIVE, SUITE 200 • PLEASANTON, CA 94588  
 PHONE: (925) 227-9100 FAX: (925) 227-9300



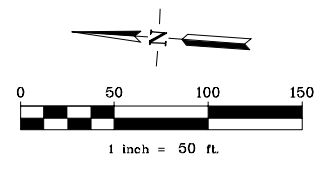
SEE SHEET 6

SEE SHEET 8

**LOTING PLAN**  
**TRACT 8337 - OAKLAND INNER HARBOR**  
 CITY OF ALAMEDA, ALAMEDA COUNTY, CALIFORNIA  
 FOR: THE CITY OF ALAMEDA

**RJA**  
**RUGGERI-JENSEN-AZAR**  
 ENGINEERS • PLANNERS • SURVEYORS  
 4690 CHABOT DRIVE, SUITE 200 • PLEASANTON, CA 94588  
 PHONE: (925) 227-9100 FAX: (925) 227-9300

G:\J2015\151094\CAD FILES\102-PLANNING\TEXT-MAP\151094-7 LOTTING PLAN.DWG 8/8/2016 3:26:27 PM JOHN WNEZDICH



SEE SHEET 7

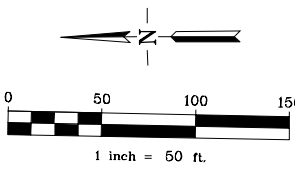
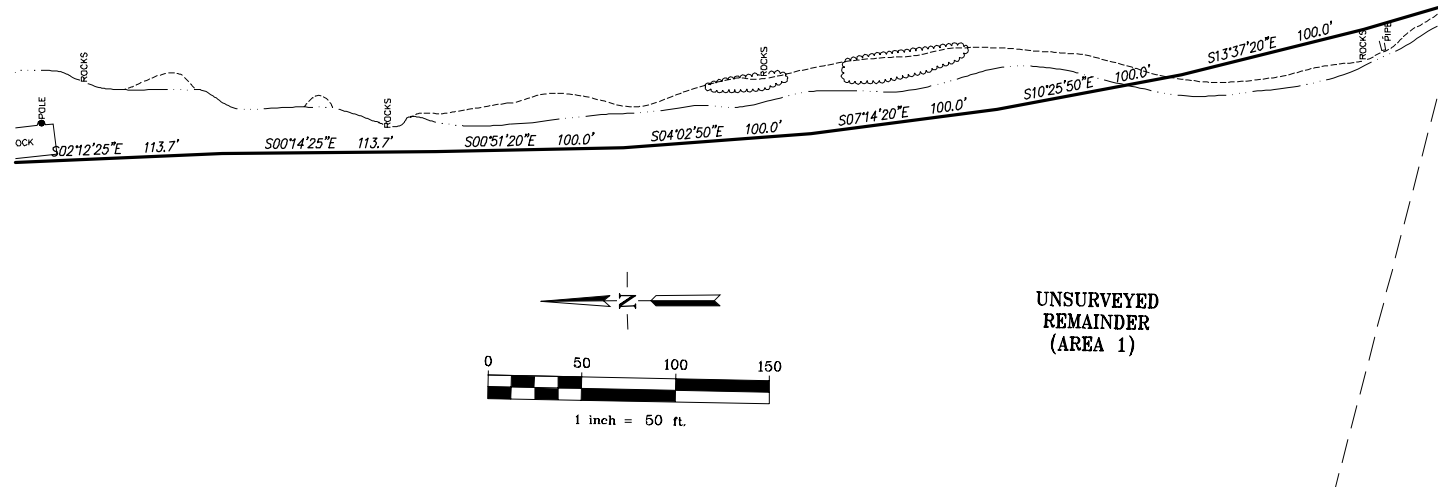
SEE SHEET 9

**LOTING PLAN**  
**TRACT 8337 - OAKLAND INNER HARBOR**  
 CITY OF ALAMEDA, ALAMEDA COUNTY, CALIFORNIA  
 FOR: THE CITY OF ALAMEDA

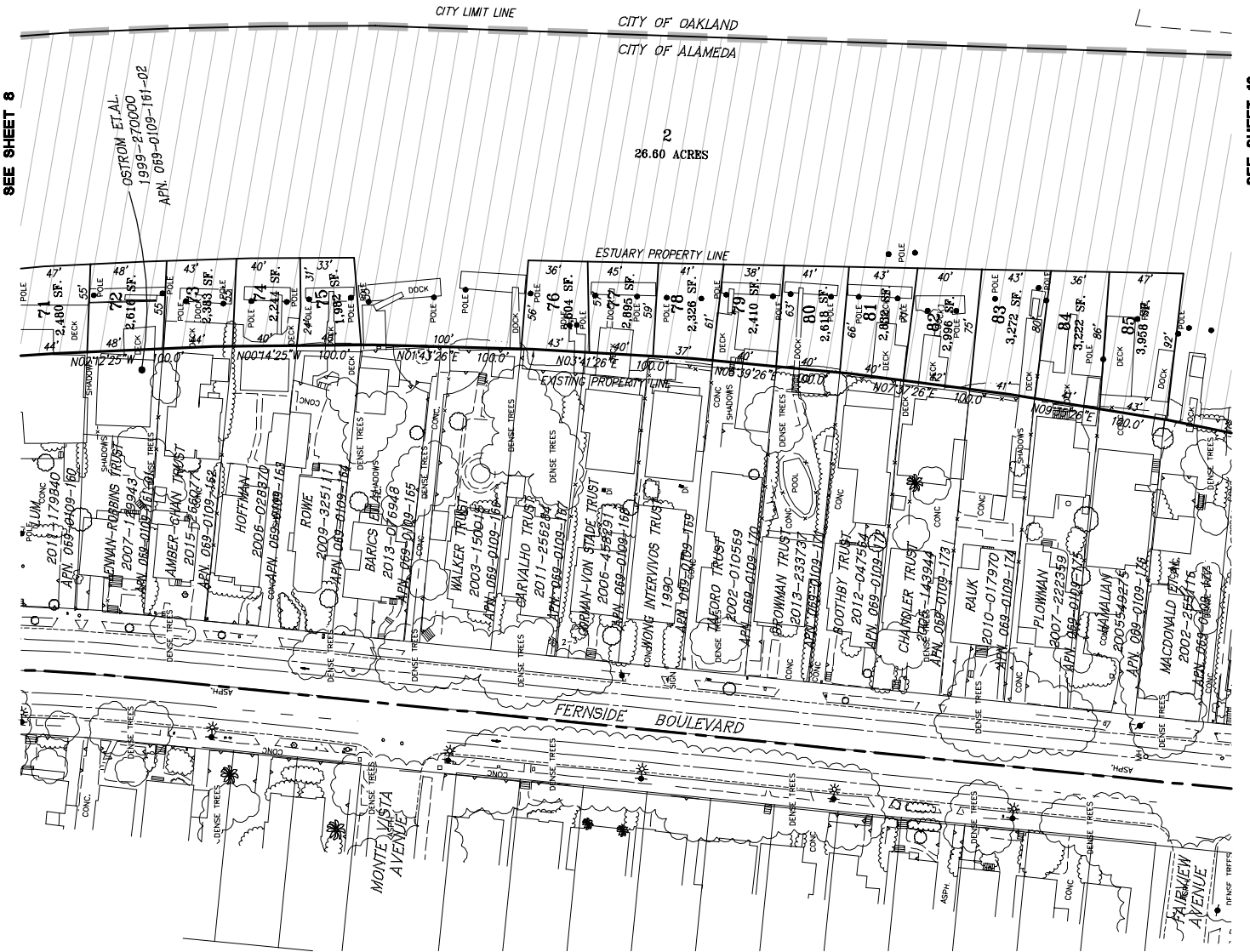
**RJA**  
**RUGGERI-JENSEN-AZAR**  
 ENGINEERS • PLANNERS • SURVEYORS  
 4690 CHABOT DRIVE, SUITE 200 • PLEASANTON, CA 94588  
 PHONE: (925) 227-9100 FAX: (925) 227-9300

G:\15094\151094\CAD FILES\102-PLANNING\TEXT-MAP\151094-8 LOTTING PLAN.DWG 9/8/2016 3:25:25 PM JOHN WIEZDOCH





UNSURVEYED  
REMAINDER  
(AREA 1)



SEE SHEET 8

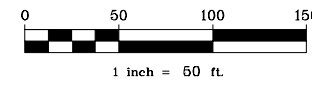
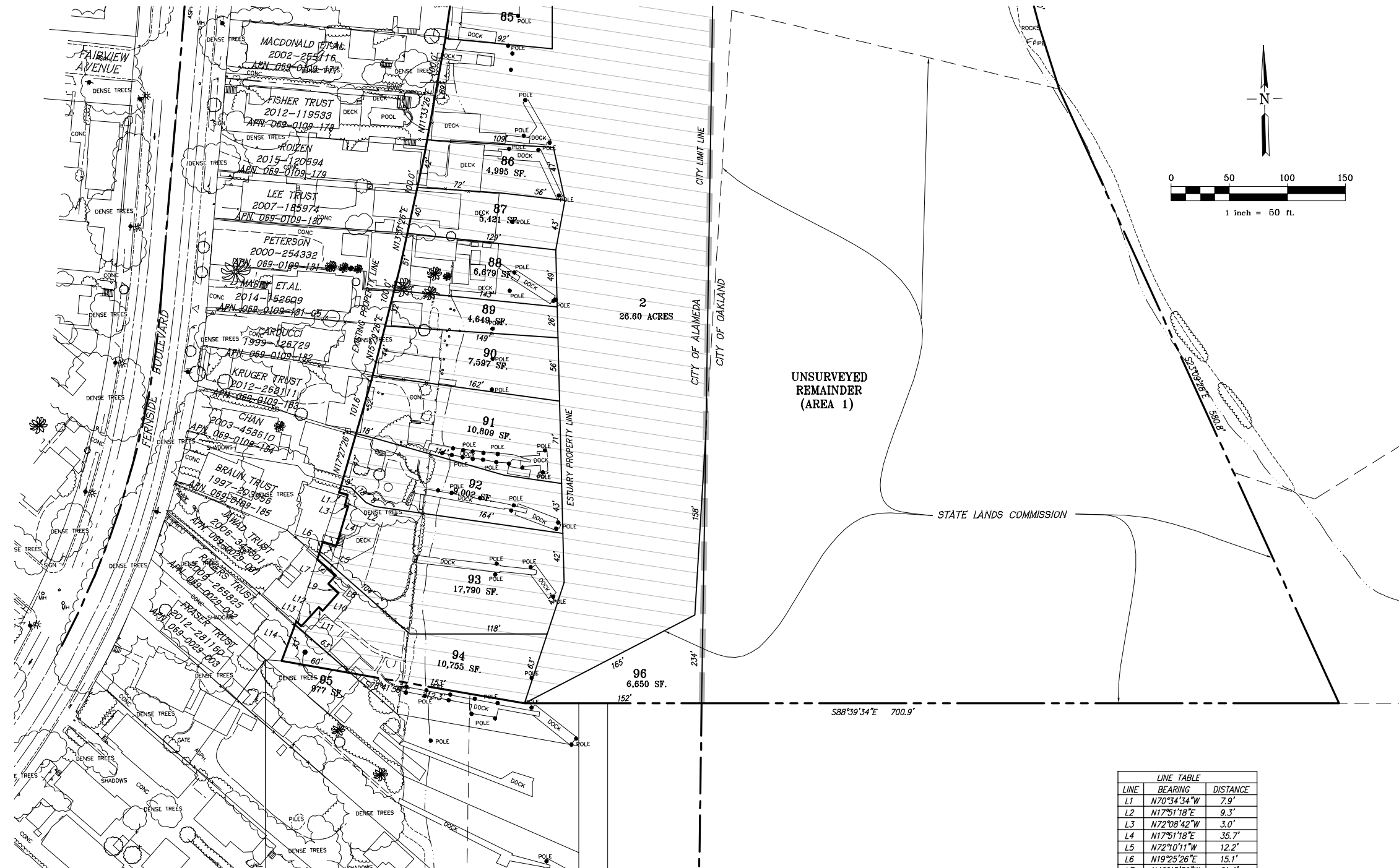
SEE SHEET 10

**LOTTING PLAN**  
**TRACT 8337 - OAKLAND INNER HARBOR**  
 CITY OF ALAMEDA, ALAMEDA COUNTY, CALIFORNIA  
 FOR: THE CITY OF ALAMEDA

G:\MAPS\151094\CAD FILES\02-PLANNING\TEXT-MAP\151094-9 LOTTING PLAN.DWG 9/8/2016 3:27:29 PM JOHN KNEZOVICH

**RJA**  
**RUGGERI-JENSEN-AZAR**  
 ENGINEERS • PLANNERS • SURVEYORS  
 4690 CHABOT DRIVE, SUITE 200 PLEASANTON, CA 94588  
 PHONE: (925) 227-9100 FAX: (925) 227-9300

SEE SHEET 9



LINE TABLE		
LINE	BEARING	DISTANCE
L1	N70°34'34"W	7.9'
L2	N17°51'18"E	9.3'
L3	N72°08'42"W	3.0'
L4	N17°51'18"E	35.7'
L5	N72°10'11"W	12.2'
L6	N19°25'26"E	15.1'
L7	N46°45'59"W	21.4'
L8	N43°14'01"E	9.5'
L9	N46°45'59"W	11.9'
L10	N43°14'01"E	20.5'
L11	N46°45'59"W	4.9'
L12	N43°14'01"E	22.1'
L13	N44°58'02"W	6.2'
L14	N21°23'26"E	35.7'

**LOTING PLAN**  
**TRACT 8337 - OAKLAND INNER HARBOR**  
 CITY OF ALAMEDA, ALAMEDA COUNTY, CALIFORNIA  
 FOR: THE CITY OF ALAMEDA

**RJA**  
**RUGGERI-JENSEN-AZAR**  
 ENGINEERS • PLANNERS • SURVEYORS  
 4690 CHABOT DRIVE, SUITE 200 • PLEASANTON, CA 94588  
 PHONE: (925) 227-9100 FAX: (925) 227-9300

G:\LAB2015\151094\CAD FILES\02-PLANNING\TEXT-MAP\151094-10 LOTTING PLAN.DWG 9/8/2016 3:29:23 PM JOHN KNEZOVICH