

AA1 – Entry Statement

Concept Rendering





Entry statement comprised of large Alameda Point Identity sign and flag pole on right hand side of entry drive and smaller, Welcome sign with changable banner hardware and flag pole on left hand side of entry.

Alameda Point sign constructed from horizontal marine grade plywood panels OR true corrugated metal panels fixed to vertical steel posts.

"Welcome" letters cut from aluminum laminate or sealed marine grade plywood and painted. City of Alameda logo all digitally printed onto aluminum laminate or marine grade plywood panel. Both to be pin mounted off from sign panel face.

ALAMEDA POINT letters constructed from marine grade plywood, painted and pin mounted off from horizontal panels.

Left side Welcome sign and graphic elements constructed in similar fashion.

Commercial grade flagpoles installed on both sides, quantity and position as shown, 35' tall.

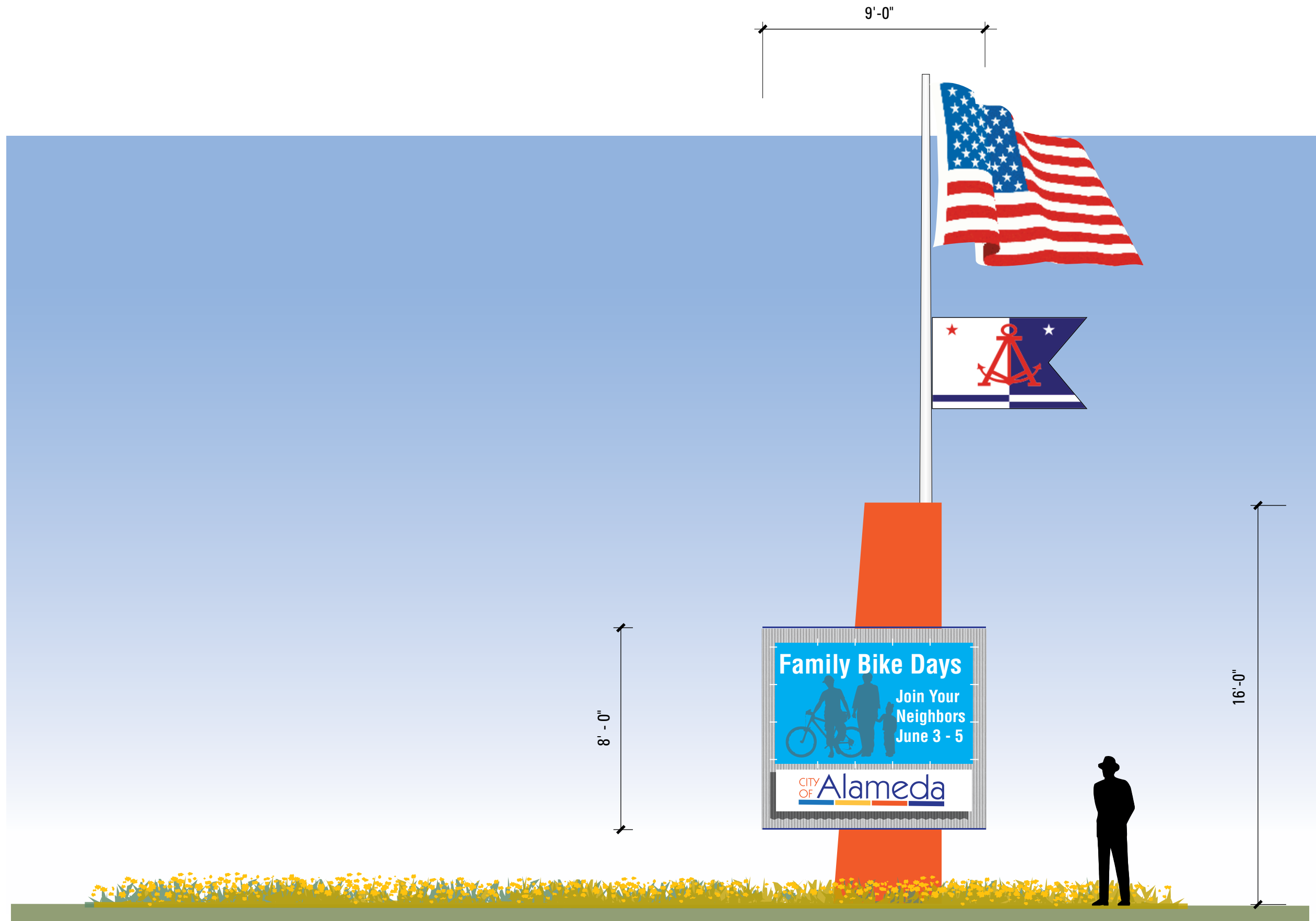
Qty. 1 set as shown

28'-0"



Right Elevation, Scale: 1/4" = 1'-0"





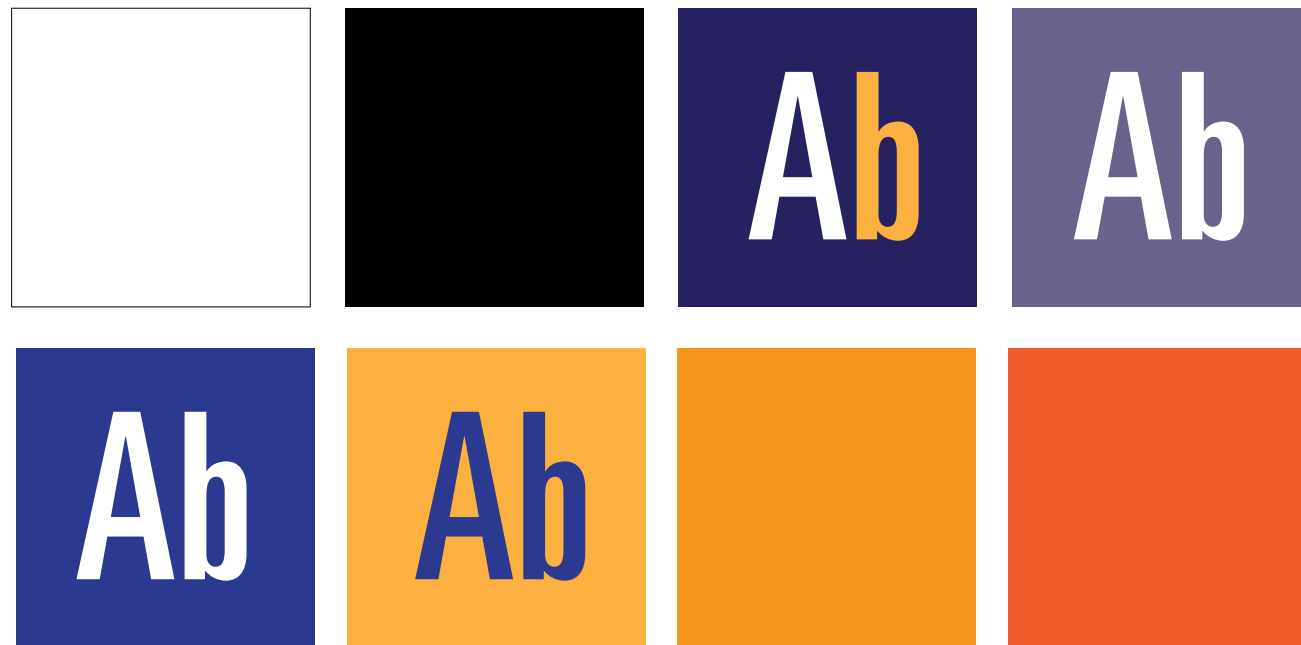
Left Elevation, Scale: 1/4" = 1'-0"



AD1 – Boundary Marker

Vertical wood sign panel with painted or digitally printed surface graphics. Mounted to painted 6x6 wood posts. Anchored in landscaping around project perimeter.

Qty: 2



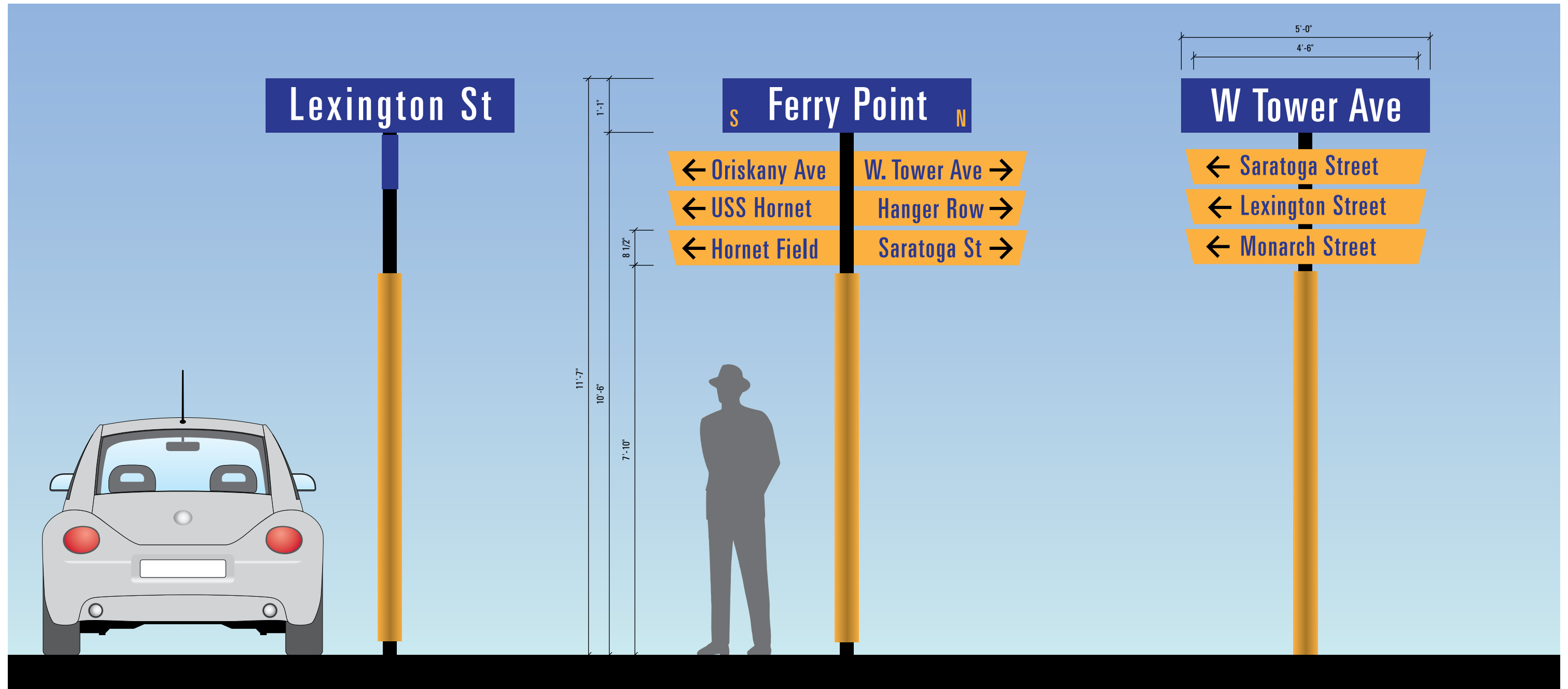
Base version without directions.
Scale: 3/4" = 1'-0"



AD3 – Street Name and Vehicular Directional

Street signs are constructed from stock 6" round aluminum tubes assembled and painted. Flat sign panels constructed from aluminum panels with paint finish and reflective vinyl copy.

Qty. 6-10, as needed



Base version without directions.
Scale: 1/2" = 1'-0"

Version with destinations in multiple directions.
Scale: 1/2" = 1'-0"

Version with multiple destinations in one directions.
Scale: 1/2" = 1'-0"



AD4 – USS Hornet Entry Approach Signage



Front Elevation
Scale: 3/4" = 1'-0"

Aluminum laminate or sealed marine grade plywood cut to 4'x 6'. Paint finish with reflective vinyl graphics.
Sign mounted to existing fence structure at optimal viewing height.

