

SPECIFICATIONS

ZONE NO.	LIMIT OF WORK	DESCRIPTION OF WORK
1	LINCOLN (ST CHARLES TO SHERMAN)	TREE MAINTENANCE MEDIAN MAINTENANCE REFUSE CONTAINER MAINTENANCE
2	WEBSTER (CENTRAL TO LINCOLN)	TREE MAINTENANCE REFUSE CONTAINER MAINTENANCE
3	WEBSTER (LINCOLN TO ATLANTIC)	TREE MAINTENANCE REFUSE CONTAINER MAINTENANCE
4	11TH ST (SAN JOSE TO ESTURAT) LINCOLN (OAK TO EVRETT) SANTA CLARA (OAK TO BROADWAY) CENTRAL (OAK TO EVERETT)	TREE MAINTENANCE REFUSE CONTAINER MAINTENANCE

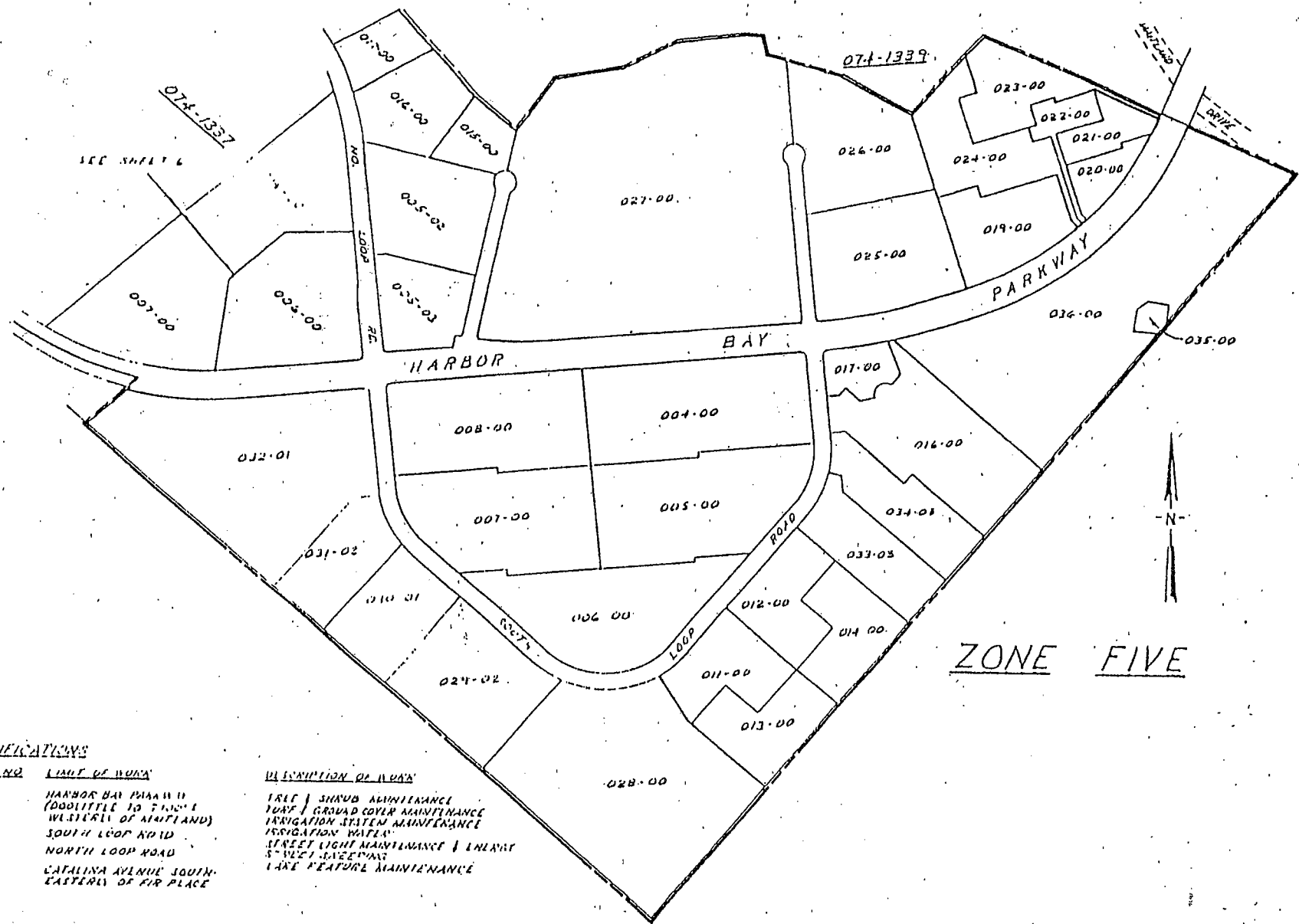
LEGEND

- 012-0376 INDICATES ASSESSOR'S BOOK / PAGE NO.
- 015-03 INDICATES ASSESSOR'S PARCEL NO.
- INDICATES DISTRICT / ZONE BOUNDARY

FOR A DETAILED DESCRIPTION OF THE LINES AND DIMENSIONS OF ANY LOTS OR PARCELS SHOWN HEREON, REFER TO THE ASSESSOR'S MAPS OF ALAMEDA COUNTY.

BENCH MARK		REFERENCES		CITY OF ALAMEDA ENGINEERING DEPARTMENT	
				DIAGRAM OF ISLAND CITY LANDSCAPING & LIGHTING DISTRICT	
				5/23/95 8884 51	





ZONE FIVE


EXPLANATIONS

5
 HARBOR BAY PLANT II
 (DOOR LITTLE TO FINISH
 WEST SIDE OF MAINLAND)
 SOUTH LOOP ROAD
 NORTH LOOP ROAD
 CATALINA AVENUE SOUTH
 EASTERN OF FIRE PLACE

DESCRIPTION OF WORK

TREE & SHRUB MAINTENANCE
 TURF & GRASS COVER MAINTENANCE
 IRRIGATION SYSTEM MAINTENANCE
 IRRIGATION WATER
 STREET LIGHT MAINTENANCE & ENERGY
 STREET SWEEEPING
 LAKE FEATURE MAINTENANCE

REVISION MARK	REFERENCES



CITY OF ALAMEDA
CALIFORNIA
ENGINEERING DEPARTMENT

APPROVED BY
James D. Anderson
CITY ENGINEER

DATE: 5/23/85

SCALE: 1" = 300'

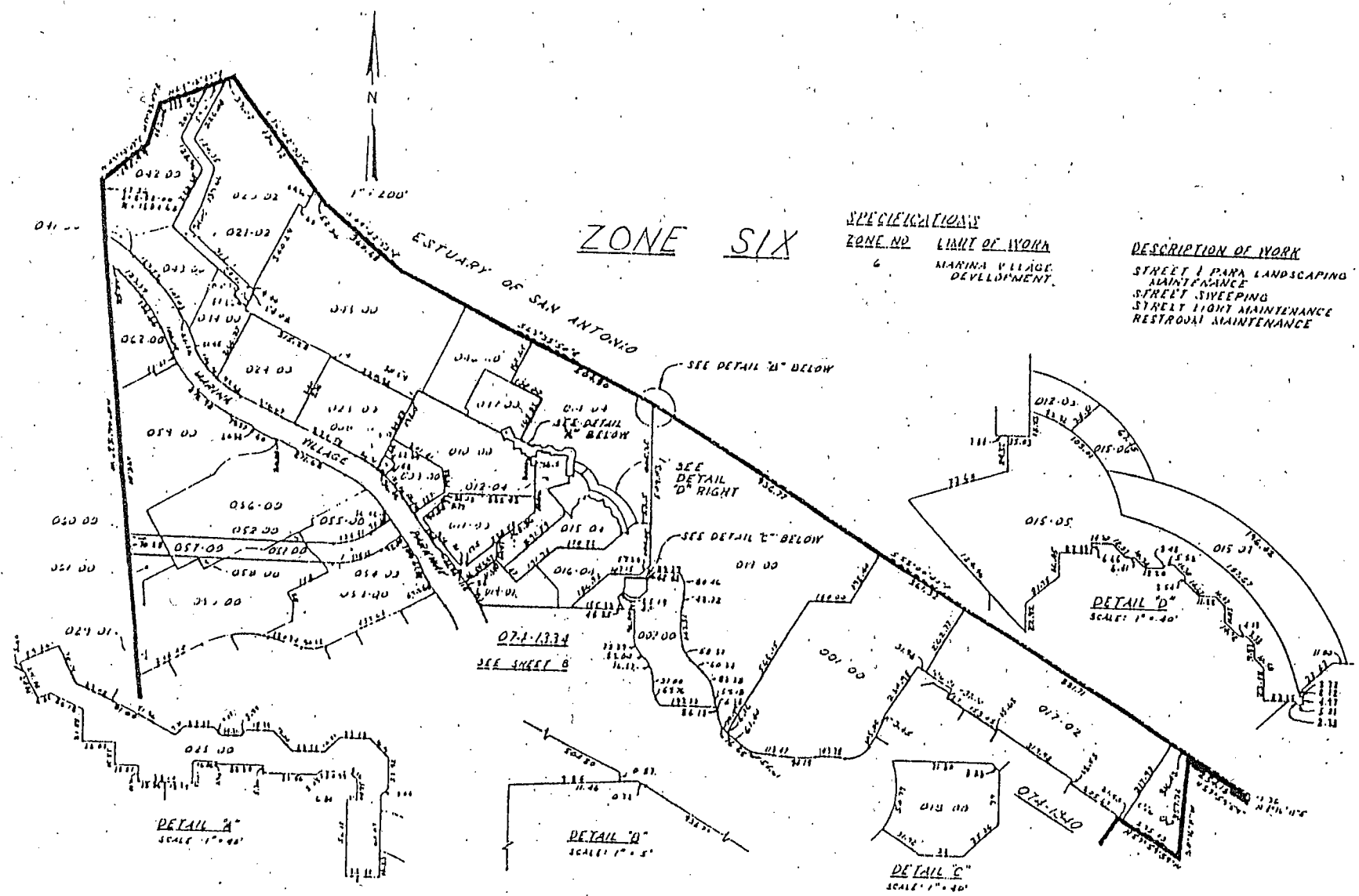
**DIAGRAM OF
ISLAND CITY LANDSCAPING
& LIGHTING DISTRICT - 2**

PROJECT NO. 8894

DATE: 5-11-85

SCALE: 1" = 300'

8894 51



ZONE SIX

SPECIFICATIONS
 ZONE NO 6
 MARINA VILLAGE DEVELOPMENT

DESCRIPTION OF WORK
 STREET & PARK LANDSCAPING
 MAINTENANCE
 STREET SWEEPING
 STREET LIGHT MAINTENANCE
 RESTROOM MAINTENANCE

DETAIL A
 SCALE 1" = 40'

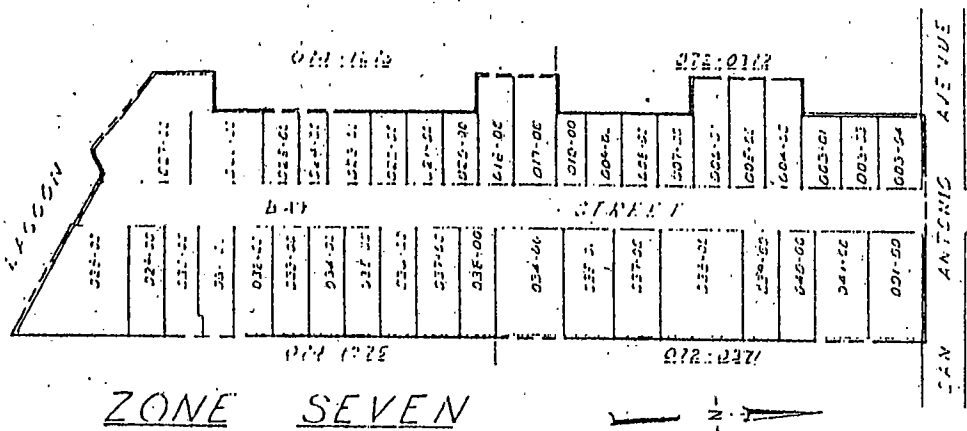
DETAIL B
 SCALE 1" = 5'

DETAIL C
 SCALE 1" = 40'

DETAIL D
 SCALE 1" = 40'



BENCH MARK	REFERENCE	DATE	BY	CHECKED	APPROVED
CITY OF ALAMEDA ENGINEERING DEPARTMENT DIAGRAM OF ISLAND CITY LANDSCAPING & LIGHTING DISTRICT 84-2					
APPROVED BY: <i>Janet R. Gordon</i> DIST. ENGINEER					DATE: <i>5/23/95</i> TIME: <i>1:11</i>
PROJECT NO: <i>8884</i>					SHEET NO: <i>51</i>



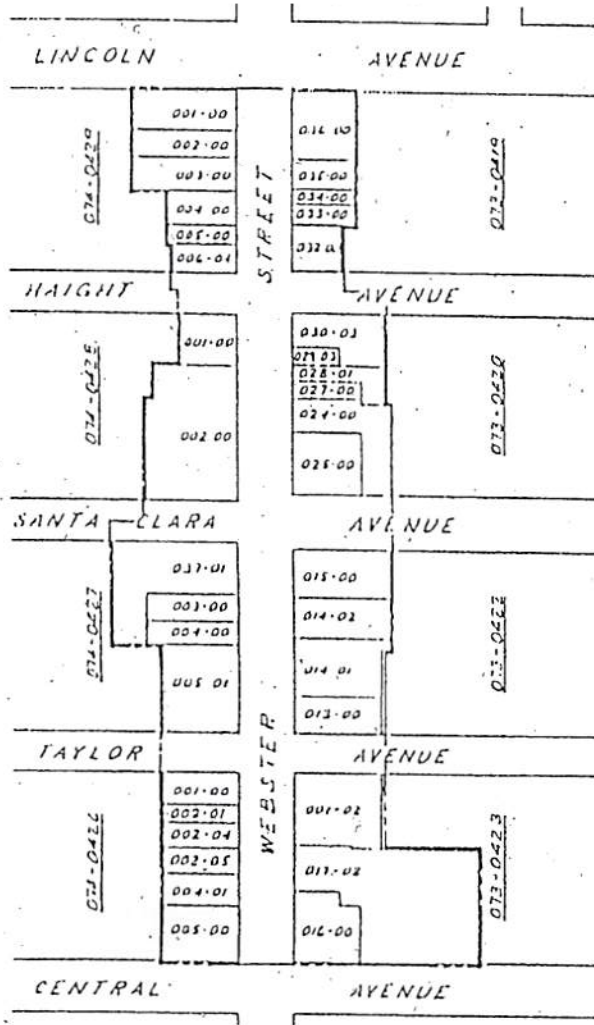
SPECIFICATIONS

<u>ZONE NO.</u>	<u>LIMIT OF WORK</u>	<u>DESCRIPTION OF WORK</u>
7	HAY STREET BETWEEN SAN ANTONIO AVENUE AND SOUTHERLY TERMINUS	TREE REPLACEMENT TREE SPRAYING SPECIAL PRUNING



CITY OF ALAMEDA CALIFORNIA ENGINEERING DEPARTMENT		Drawn by <i>Jessie Anderson</i> 5/23/05 Date 10 11 8884 51
DIAGRAM OF ISLAND CITY LANDSCAPING & LIGHTING DISTRICT 4-3		MAY 19 11 2005 MAY 19 11 2005
CHECKED DRAWN CALLED MAY 19 11 2005	REFERENCE	SCALE 1" = 100'

ZONE 8 (Formerly Zone 2)




SPECIFICATIONS

ZONE NO.	LIMIT OF WORK	DESCRIPTION OF WORK
1	LINCOLN (ST CHARLES TO SHERMAN)	TREE MAINTENANCE MEDIAN MAINTENANCE REFUSE CONTAINER MAINTENANCE
2	WEBSTER (CENTRAL TO LINCOLN)	TREE MAINTENANCE REFUSE CONTAINER MAINTENANCE
3	WEBSTER (LINCOLN TO ATLANTIC)	TREE MAINTENANCE REFUSE CONTAINER MAINTENANCE
4	11th ST (SAN JOSE TO ESTURAN) LINCOLN (OAK TO EVRETT) SANTA CLARA (OAK TO BROADWAY) CENTRAL (OAK TO EVRETT)	TREE MAINTENANCE REFUSE CONTAINER MAINTENANCE

LEGEND

- 012-2224 INDICATES ASSESSOR'S BOOK / PAGE NO.
- 015-03 INDICATES ASSESSOR'S PARCEL NO.
- INDICATES DISTRICT / ZONE BOUNDARY

FOR A DETAILED DESCRIPTION OF THE LINES AND DIMENSIONS OF ANY LOTS OR PARCELS SHOWN HEREON, REFER TO THE ASSESSOR'S MAPS OF ALAMEDA COUNTY.

BENCH MARK		REFERENCES		CITY OF ALAMEDA ENGINEERING DEPARTMENT	
				DIAGRAM OF ISLAND CITY LANDSCAPING & LIGHTING DISTRICT	
				 5/23/95 8684 51	

