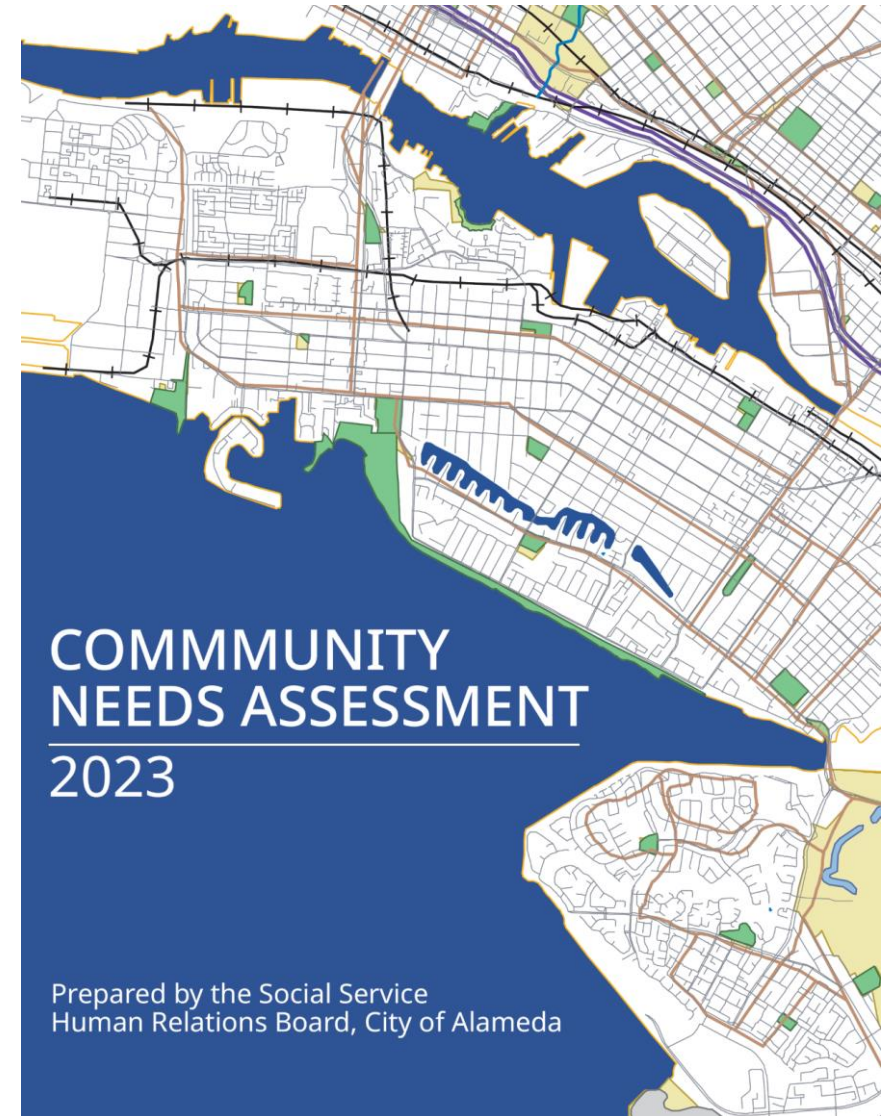


2023 Community Needs Assessment

Presented by the Social Services and Human Relations Board



Background

- The Social Services Human Relations Board (SSHRB) has the responsibility of assessing and responding to social service and human relations needs
- SSHRB has periodically conducted a Community Needs Assessment
- The last CNA was presented to City Council in June 2018
- In March 2022 SSHRB finalized the 2023 methodology
 - Eliminate the previous survey format
 - Gather existing secondary data
 - Supplement with community meetings

11 Quality of Life Domains

Demographics

Income/Economy

Education

Housing

Health

Social Connectedness

Social Supports

Transportation

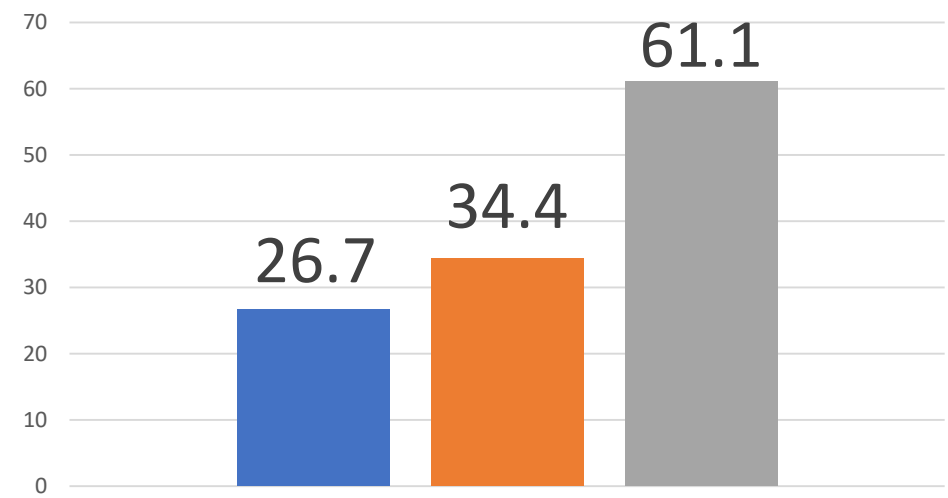
Civic Engagement

Personal Security

Environmental Quality

Demographics

Age Dependency Ratios



- Old-age Dependency Ratio
- Child Dependency Ratio
- Age Dependency Ratio

- Alameda remains a diverse community in terms of age, race/ethnicity, language and incomes
- The number of young people and older adults outnumber the population of economically active adults. The City’s age dependency ratio is significantly higher than the County and the U.S.
- 13% of residents over age 5 speak English less than very well, 7% of households are linguistically isolated

U.S. Census Bureau. 2020 5 Year Estimates. Table S1101.

Income

- Poverty thresholds are roughly 1/3 to 1/5 of what is estimated to maintain self-sufficiency in Alameda County
- Seven percent (7%) of the population of Alameda lives in poverty
- Low income affects households of color disproportionately

Alameda County Self-sufficiency Standards vs Poverty Thresholds

	Single Adult	Single Adult, One Preschooler	Two Adults, One Preschooler and One School Ager
Hourly Wage	\$20.66	\$43.57	\$29.14
Annual Income	\$43,633	\$92,015	\$123,080
Poverty Threshold	\$12,880	\$17,420	\$26,500

The Self-Sufficiency Standard for California 2021, Center for Women's Welfare.

Education

- 9% of students are not graduating on time
- Students of color were more likely to drop out
- 72% of 5th graders feel connected, 57% of 9th and 11th graders
- 53% of 9th graders reported having a caring adult at school

Annual High School Drop Out by Race/Ethnicity	
Race/Ethnicity	Percent
African American	2.0%
Asian	1.6%
Filipino	3.1%
Hispanic or Latino	7.1%
Two or More Races	4.7%
White	2.0%

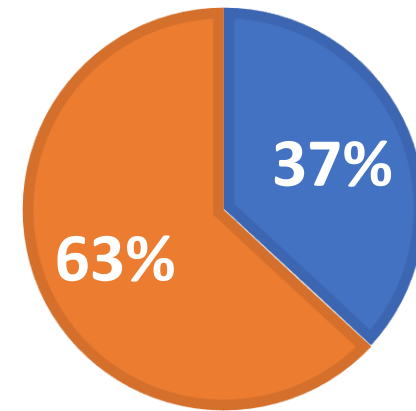
California Department of Education. Analysis, Measurement, & Accountability Reporting Division.

Housing

- More than one-third of households in Alameda have a significant housing burden
- In January of 2022, 264 individuals were unhoused
- 41% of unhoused people reported they first lost housing prior to age 25
- 51% without housing suggested rental assistance would have prevented them from losing their housing

Housing Burden (households paying 30% or more on housing)

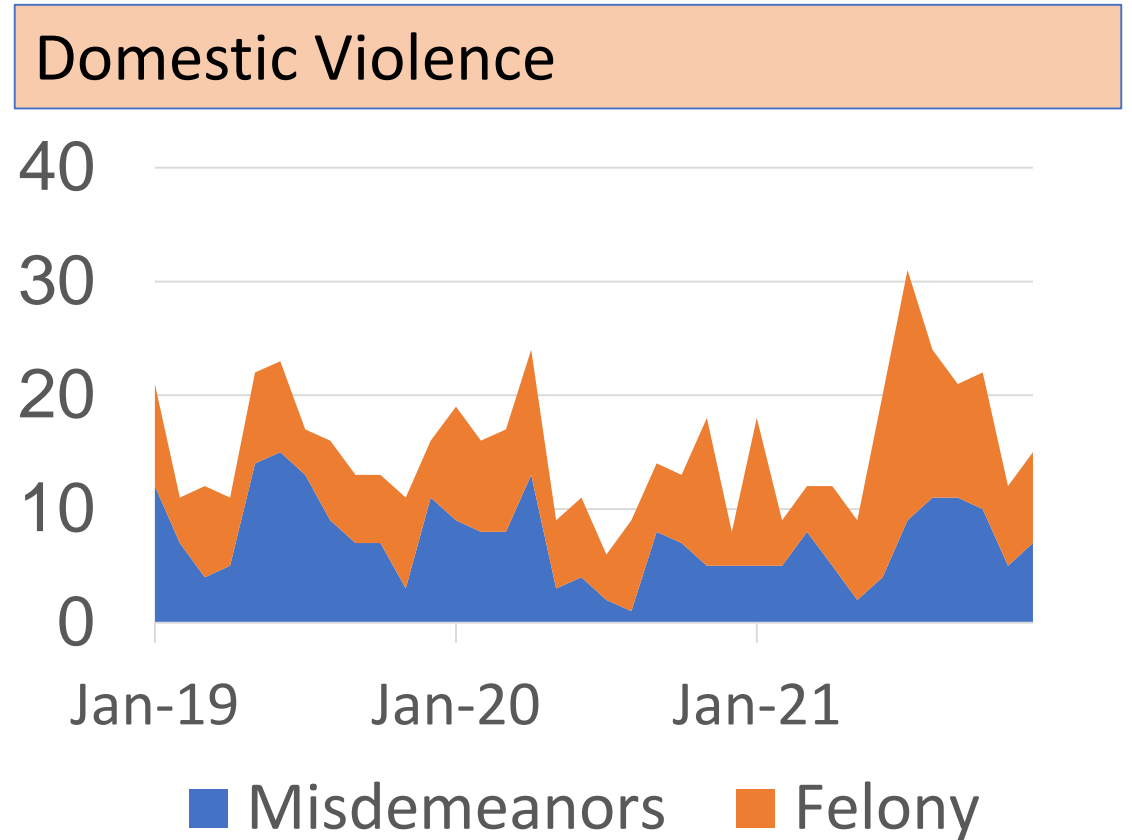
- Households paying 30% or more
- Households paying less than 30%



U.S. Census Bureau, 2016-2020 American Community Survey 5-Year Estimates. Table S2503: Financial Characteristics.

Personal Safety

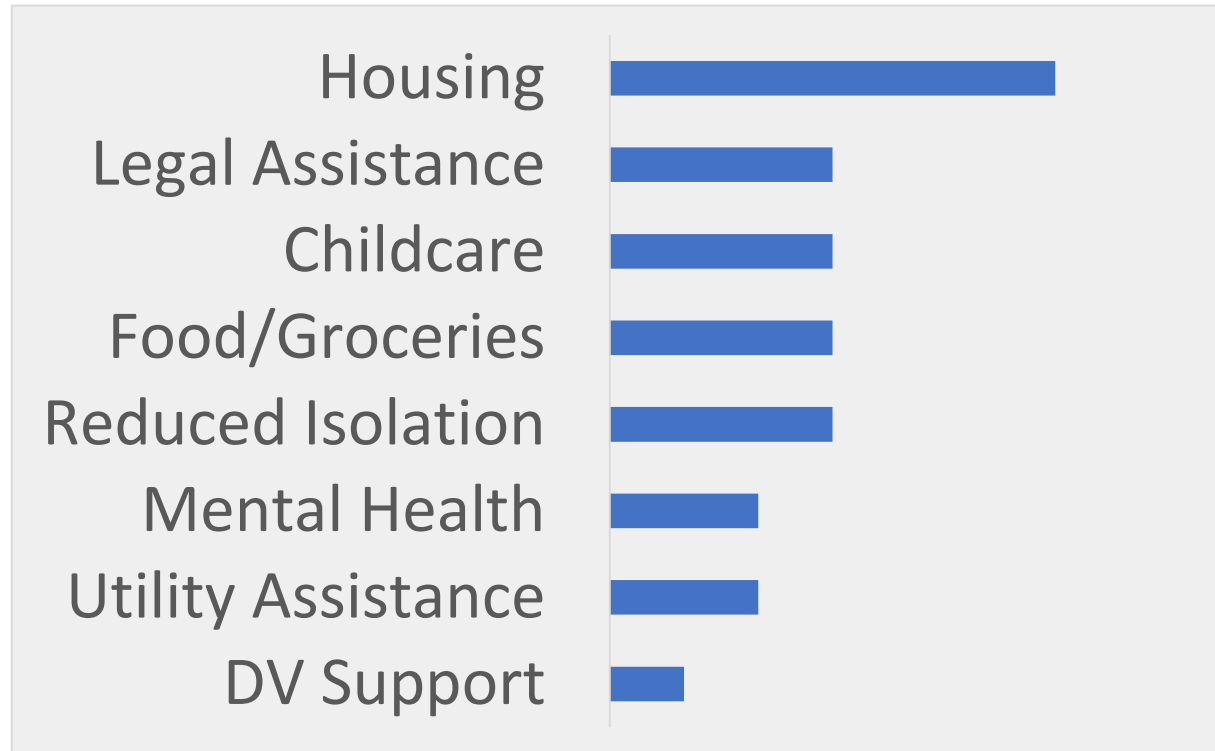
- Between 2019 and 2021 there was a 36% increase in the number of felony domestic violence cases
- Less than two-thirds of students in all grades reported feeling “safe” or “very safe” at school



Alameda Police Department. Domestic Violence Incidents. Data Received May 2022.

Social Supports

Identified Needs



- Community organizations reported safe, affordable housing was the primary need for their clients
- Clients were struggling to meet other basic needs such as food, gas, utilities, and childcare
- There is also a need for increased social connectedness and a reprieve from social isolation, particularly among youth and older adults

SSHRB. (2022). Survey of Local Service Providers.

A large orange circle is positioned on the left side of the slide, partially overlapping the white background. The word "Conclusions" is written in white text inside this circle.

Conclusions

Segments of the population require special attention to meet needs equitably

Racial inequity runs across domains

Many households with children require additional support

Housing remains a top concern for many households and community members