



Richard Jenkins
Saildrone founder & CEO
richard@saildrone.com

- Richard Jenkins set a land speed record of 126 mph in Nevada in 2009
- Moved to Alameda in 2009
- 2010 - Applied patented wing technology to Ocean research
- Started Saildrone in 2013

Harnessing Renewable Power

Near zero carbon footprint

Saildrone harnesses wind and solar power to enable access to any part of the world's oceans, at any time of year

Products

Sector

OCEAN DATA

Weather, Climate,
Conservation

BATHYMETRY

Mapping, Natural
resources, Offshore Wind

MDA / ISR

Homeland Security,
Defense



1050 W Tower Ave



About Saildrone

- HQ in Alameda, California.
- Remote offices in Florida, Mass. & Washington DC
- Control centers in US, UK and Australia
- 150 Employees
- Private company
- VC Backed - \$200m raised to date
- 100 + people to hire in the next 12 months

USA

USA

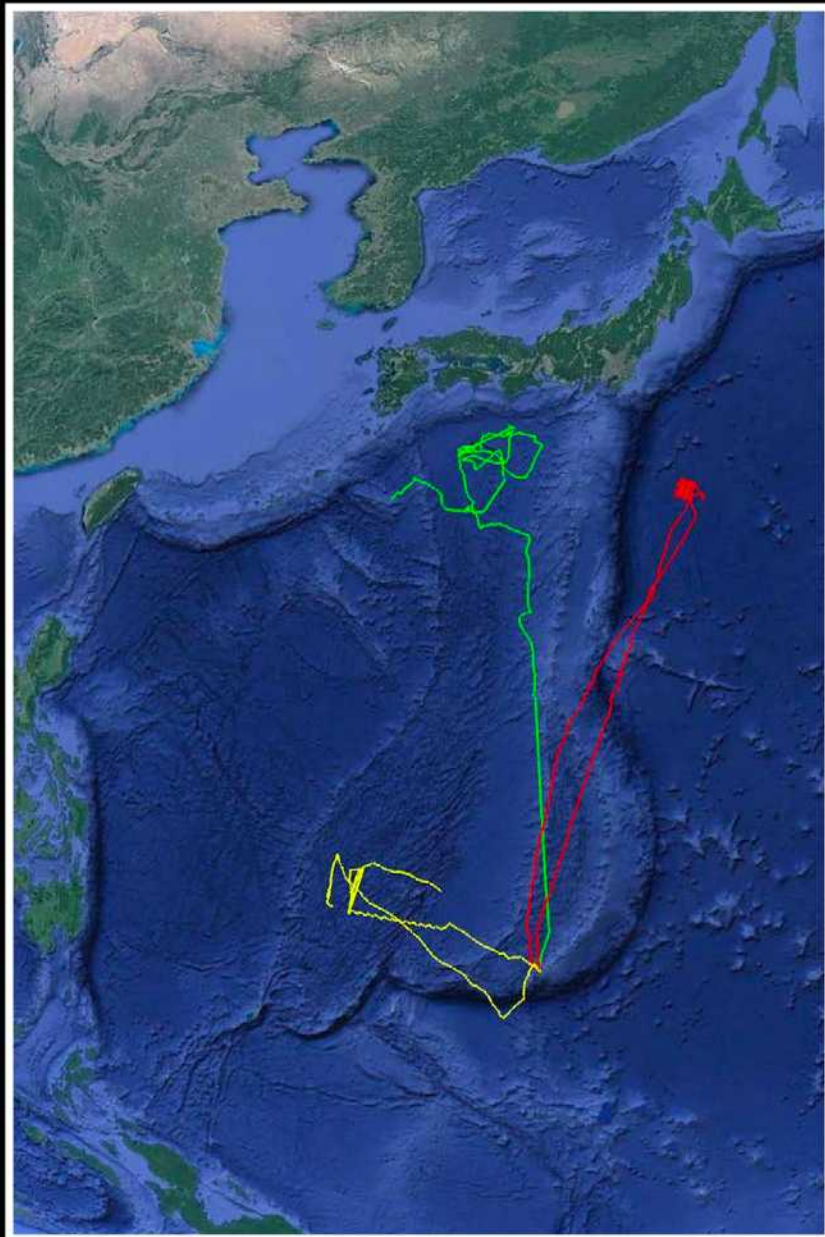
Proven Technology

Global operations

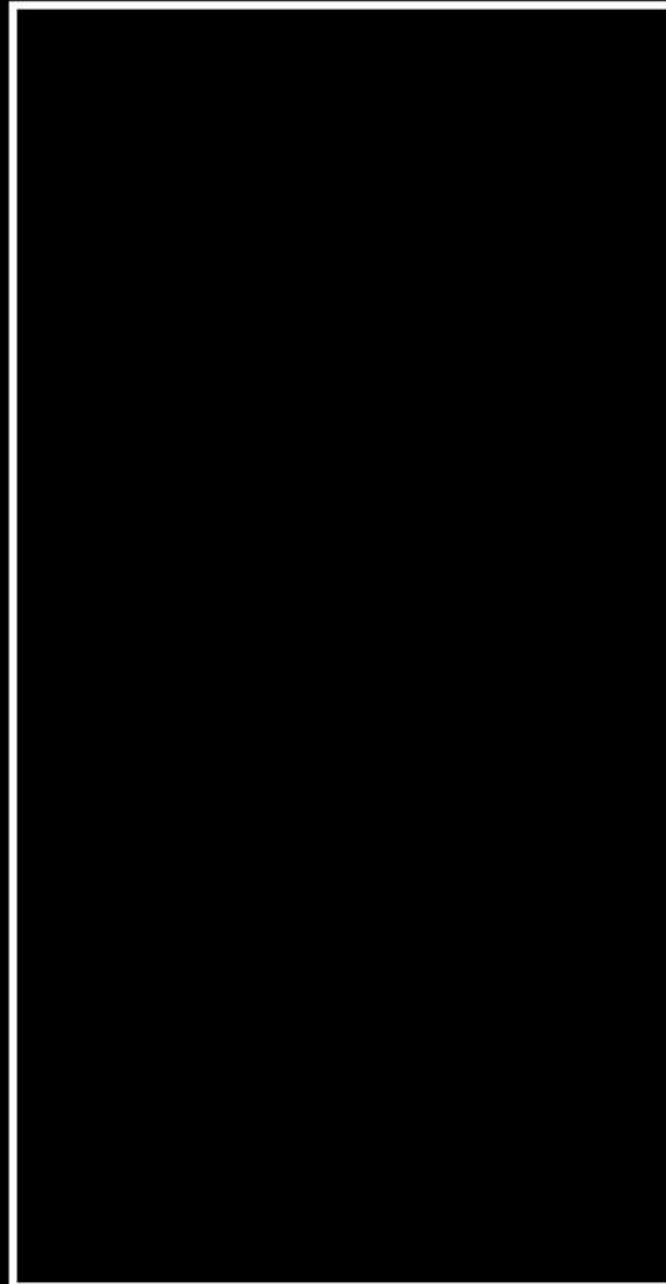
> 750,000 NM Sailed

> 17,000 Days at Sea

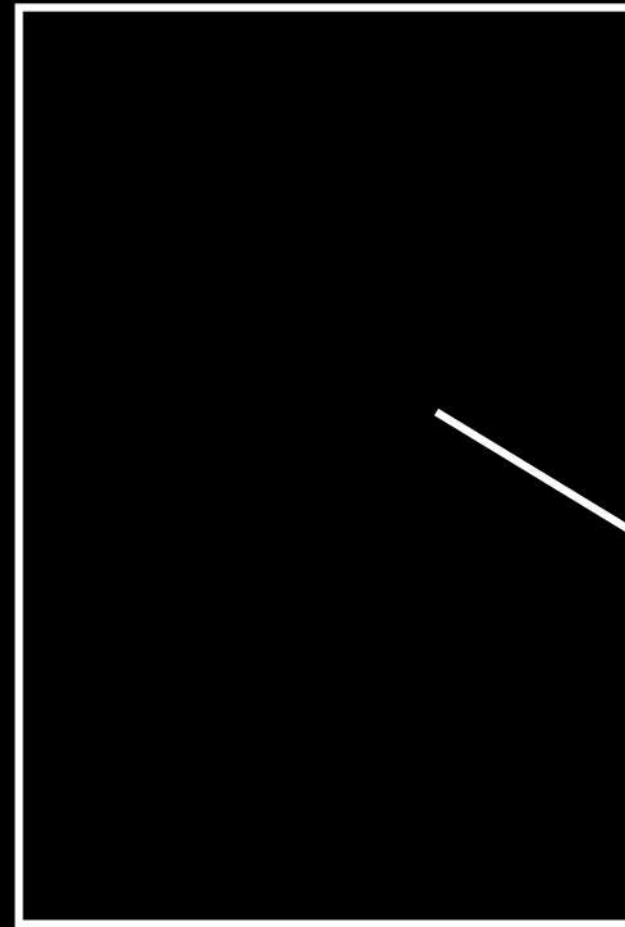
Guam - Japan



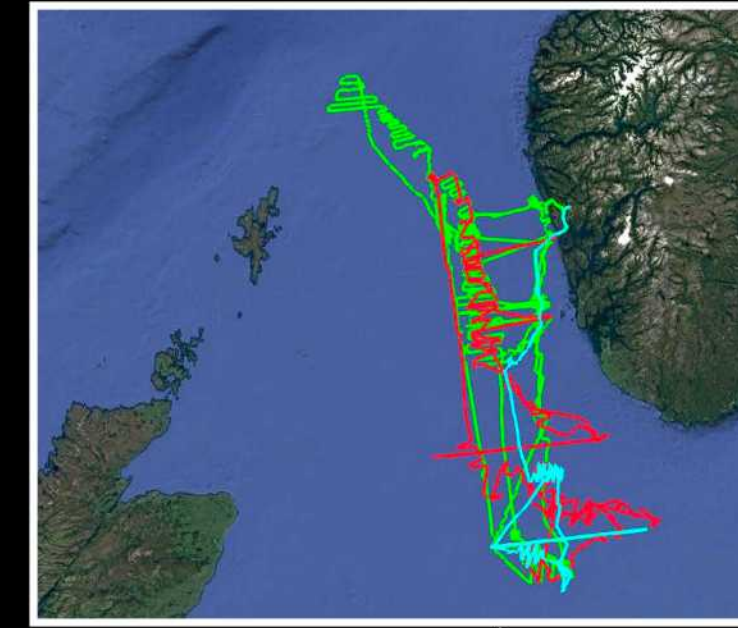
West Coast USA



Arctic



North Sea



Transatlantic



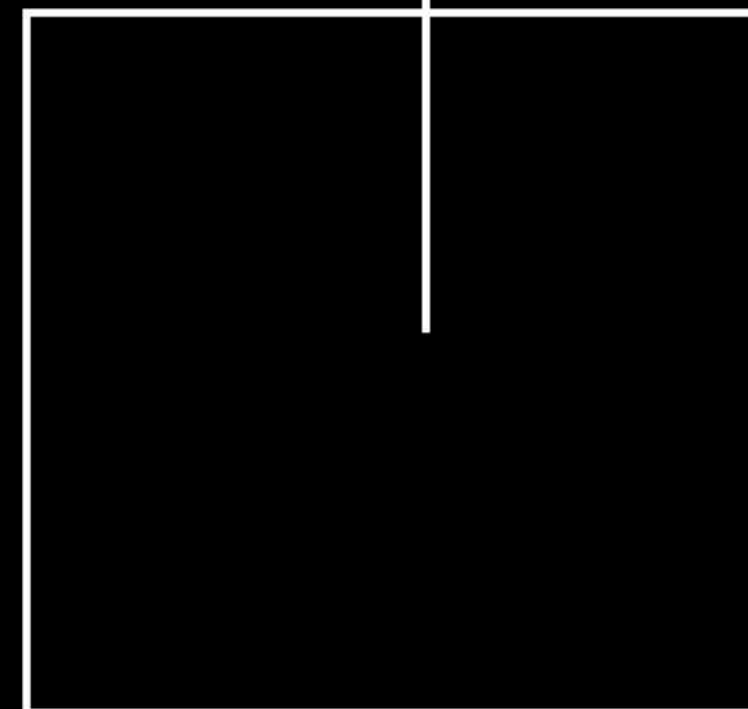
Atlantic to Med



Tropical Pacific



Antarctic Circumnavigation



Barbados

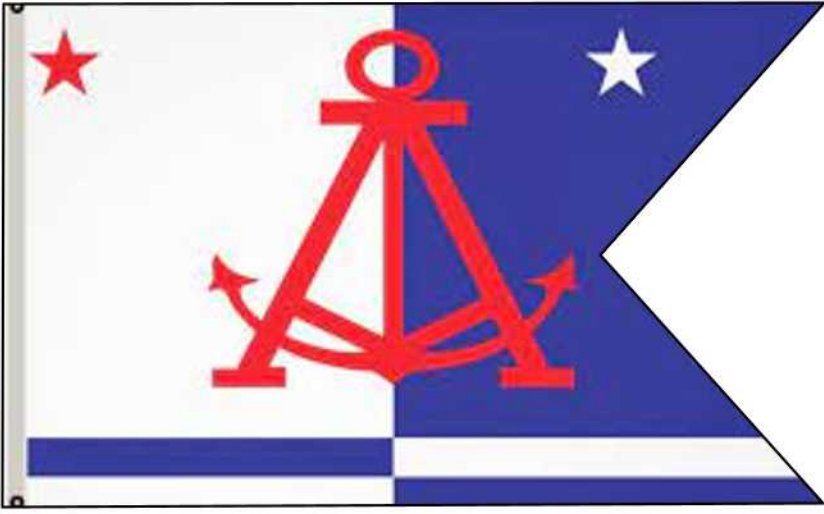


SAILDRONE SUPPORTING SCIENCE AND OCEAN HEALTH

Collaborating with the world's leading ocean scientific organizations



		The logo for the European Centre for Medium-Range Weather Forecasts (ECMWF), featuring the acronym "ECMWF" in a bold, blue, sans-serif font, with the full name in smaller text below it. EU			
					The logo for the Integrated Carbon Observation System (ICOS), featuring the acronym "ICOS" in a large, bold, black font, with the full name in smaller text to the right. NOR
					The logo for the Institute of Marine Research, featuring a circular emblem with a sailboat and the text "INSTITUTE OF MARINE RESEARCH" around the perimeter. NOR
					The logo for Copernicus, featuring the word "Copernicus" in a blue, sans-serif font, with the tagline "Europe's eyes on Earth" below it. EU
The logo for the Climate Observations and Monitoring (COM) program, featuring the NOAA logo and the text "COM Climate Observations and Monitoring". USA					The logo for Ifremer, featuring a stylized blue fish icon and the word "Ifremer" in a bold, blue, sans-serif font. FRA
The logo for the Bering Sea Fisheries Research Foundation (BSFRF), featuring the acronym "BSFRF" in a large, bold, blue font, with the full name below it. USA	The logo for the Monterey Bay Aquarium Research Institute (MBARI), featuring a stylized blue fish icon and the acronym "MBARI" in a bold, blue, sans-serif font. USA			The logo for the Schmidt Ocean Institute, featuring a stylized blue and yellow wave icon and the text "SCHMIDT OCEAN INSTITUTE". USA	



Building 19

1050 W Tower Ave