

Natel Energy PLN24-0059 Figures and Renderings

STREET VIEW 1, FACING WEST.
PROPOSED



Exhibit 2
Item 5-A, April 22, 2024
Planning Board Meeting

2024 NATEL ENERGY INC.
GREGOR CADMAN, C.O.O.
GREGOR@NATELENERGY.COM
617.413.0778

Confidential, Natel Energy Inc. Not for distribution beyond intended recipient.

STREET VIEW 1, FACING WEST.
PROPOSED

(alternative without screen facade over aquaculture system. Natel will work with staff for appropriate material if screening is preferred.)

2024 NATEL ENERGY INC.
GREGOR CADMAN, C.O.O.
GREGOR@NATELENERGY.COM
617.413.0778

Confidential, Natel Energy Inc. Not
for distribution beyond intended
recipient.

STREET VIEW 1, FACING WEST.
EXISTING

2024 NATEL ENERGY INC.
GREGOR CADMAN, C.O.O.
GREGOR@NATELENERGY.COM
617.413.0778

Confidential, Natel Energy Inc. Not
for distribution beyond intended
recipient.

STREET VIEW 2, FACING WEST.
PROPOSED



2024 NATEL ENERGY INC.
GREGOR CADMAN, C.O.O.
GREGOR@NATELENERGY.COM
617.413.0778

Confidential, Natel Energy Inc. Not
for distribution beyond intended
recipient.

STREET VIEW 2, FACING WEST.
PROPOSED

(alternative without screen facade
over aquaculture system. Natel will
work with staff for appropriate
material if screening is preferred.)



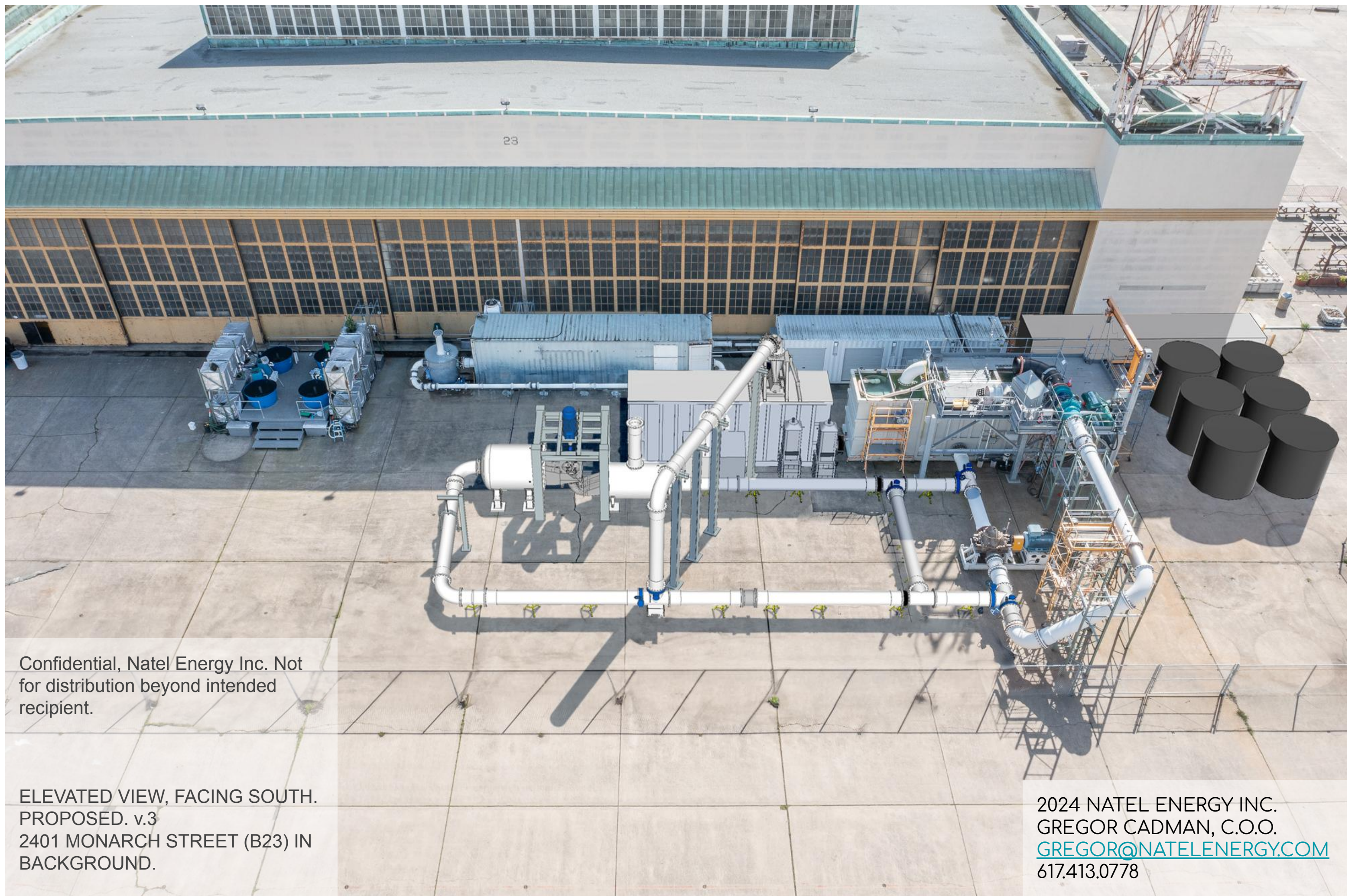
2024 NATEL ENERGY INC.
GREGOR CADMAN, C.O.O.
GREGOR@NATELENERGY.COM
617.413.0778

Confidential, Natel Energy Inc. Not
for distribution beyond intended
recipient.

STREET VIEW 2, FACING WEST.
EXISTING



2024 NATEL ENERGY INC.
GREGOR CADMAN, C.O.O.
GREGOR@NATELENERGY.COM
617.413.0778



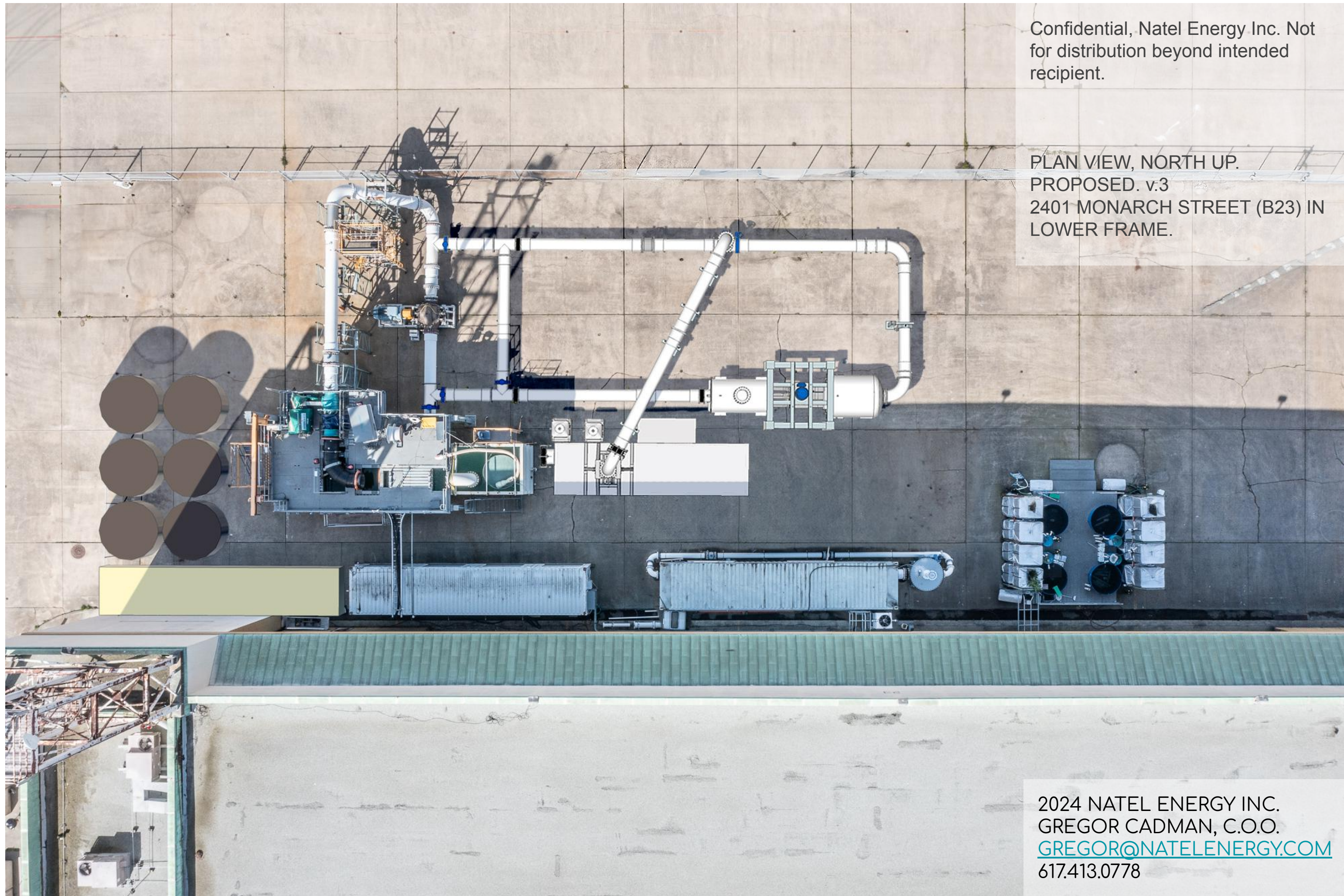
Confidential, Natel Energy Inc. Not
for distribution beyond intended
recipient.

ELEVATED VIEW, FACING SOUTH.
PROPOSED. v.3
2401 MONARCH STREET (B23) IN
BACKGROUND.

2024 NATEL ENERGY INC.
GREGOR CADMAN, C.O.O.
GREGOR@NATELENERGY.COM
617.413.0778

Confidential, Natel Energy Inc. Not
for distribution beyond intended
recipient.

PLAN VIEW, NORTH UP.
PROPOSED. v.3
2401 MONARCH STREET (B23) IN
LOWER FRAME.



2024 NATEL ENERGY INC.
GREGOR CADMAN, C.O.O.
GREGOR@NATELENERGY.COM
617.413.0778



VA Alameda Point
Site Entrance

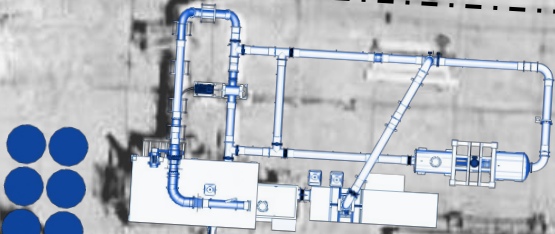
PROPERTY LINE (APPROX.)

MIDWAY AVENUE

|GATE|

FENCELINE (EXISTING)

|GATE|



PROPOSED
EQUIPMENT

Natel Energy

2401 MONARCH
(BUILDING 23)

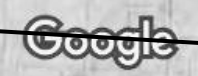
2024 NATEL ENERGY INC.
GREGOR CADMAN, C.O.O.
GREGOR@NATELENERGY.COM
617.413.0778

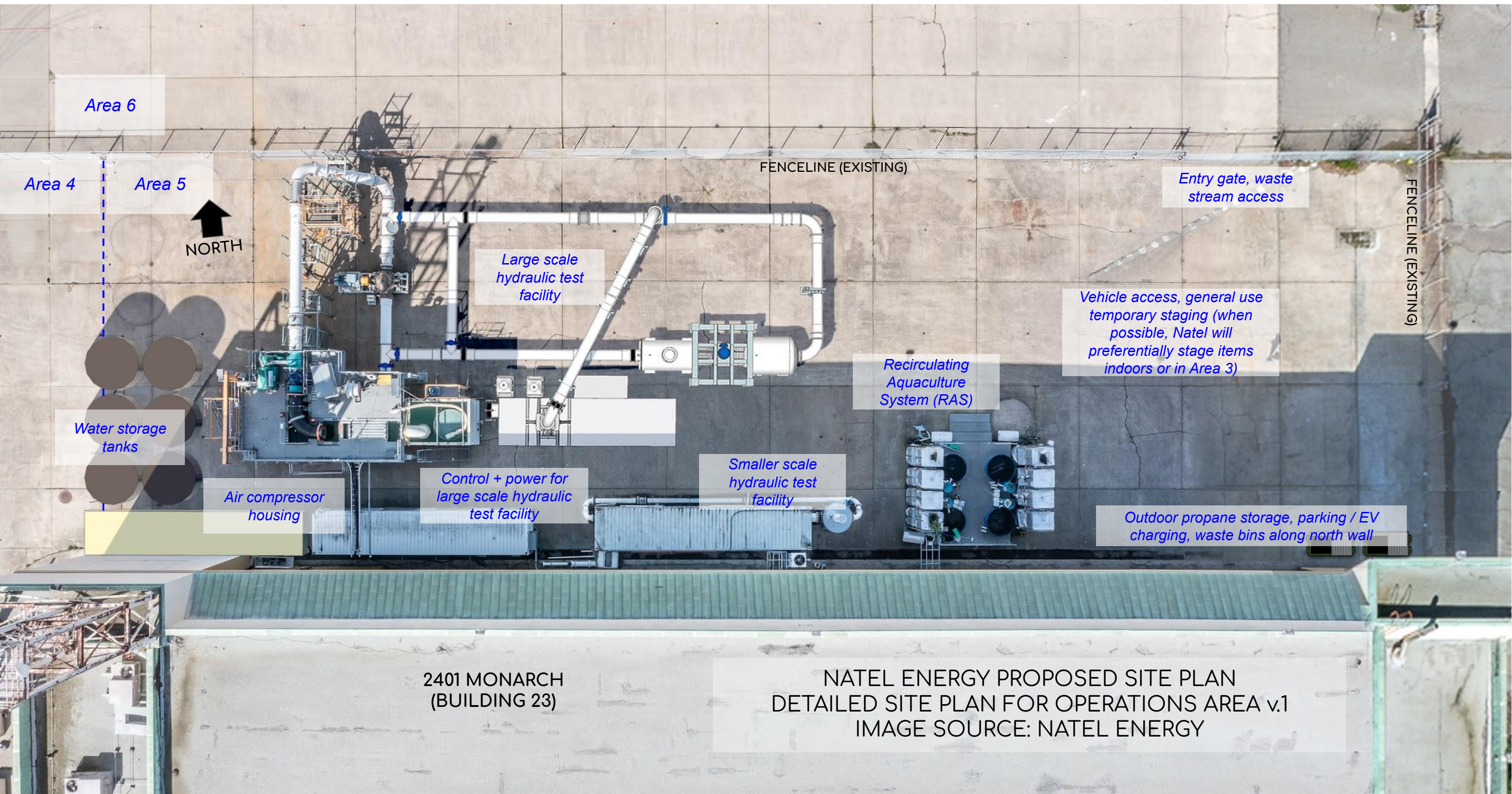
PUBLIC ROAD (MONARCH ST)
Monarch St

Monarch St

h St

NATEL ENERGY PROPOSED SITE PLAN
INTERMEDIATE SCALE VIEW v.2
IMAGE SOURCE: GOOGLE MAPS





Area 6

Area 4

Area 5



NORTH

FENCELINE (EXISTING)

Entry gate, waste stream access

FENCELINE (EXISTING)

Large scale hydraulic test facility

Vehicle access, general use temporary staging (when possible, Natel will preferentially stage items indoors or in Area 3)

Recirculating Aquaculture System (RAS)

Water storage tanks

Air compressor housing

Control + power for large scale hydraulic test facility

Smaller scale hydraulic test facility

Outdoor propane storage, parking / EV charging, waste bins along north wall

2401 MONARCH (BUILDING 23)

NATEL ENERGY PROPOSED SITE PLAN
DETAILED SITE PLAN FOR OPERATIONS AREA v.1
IMAGE SOURCE: NATEL ENERGY

NATEL ENERGY PROPOSED
SCALE TEST MODEL
EQUIPMENT - LOCATION

WIDE SCALE VIEW v.2

IMAGE SOURCE: CITY OF
ALAMEDA

PROPOSED
EQUIPMENT
LOCATION



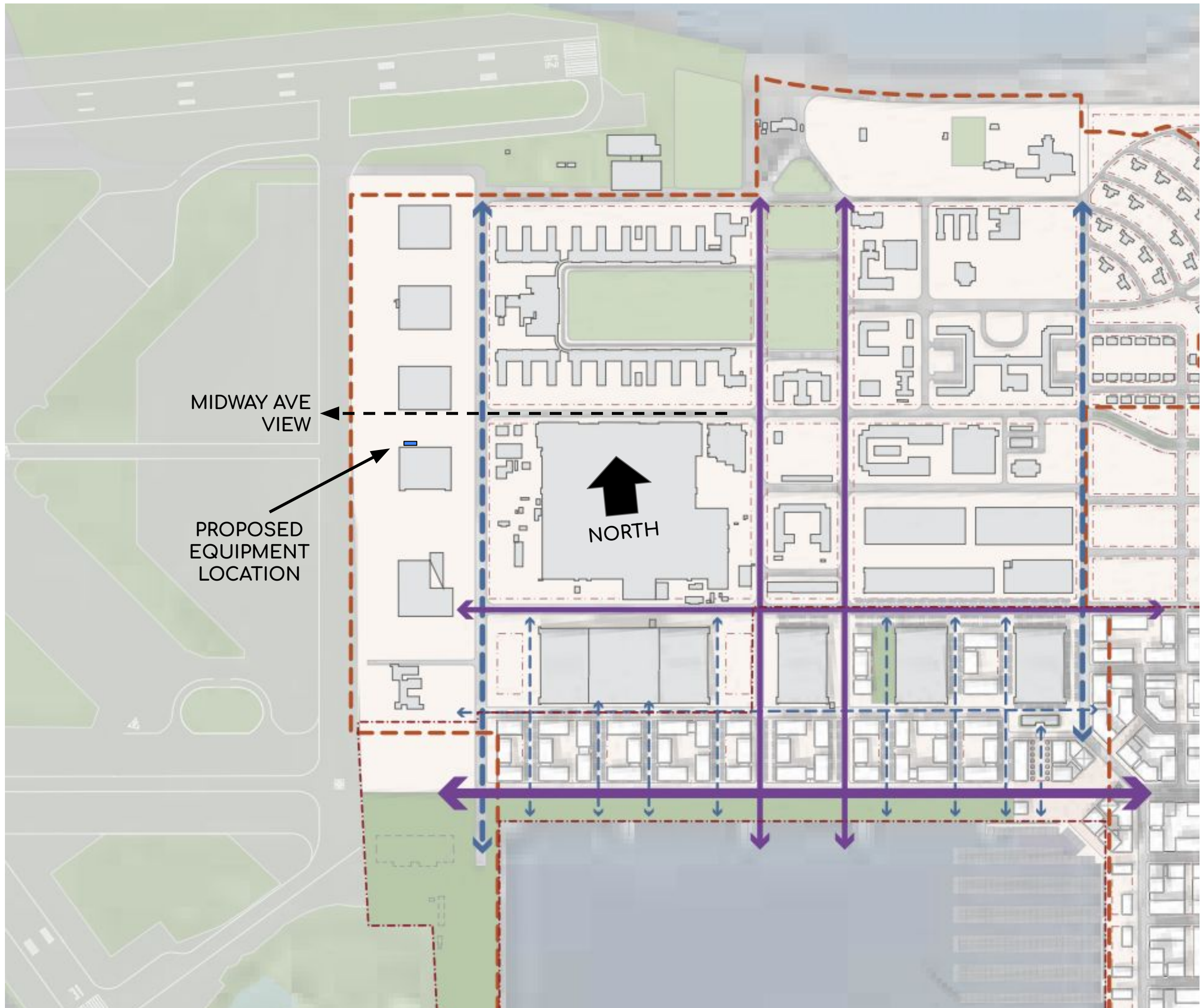
MONARCH STREET

REDLINE AVENUE

400'

NORTH

2024 NATEL ENERGY INC.
GREGOR CADMAN, C.O.O.
GREGOR@NATELENERGY.COM
617.413.0778

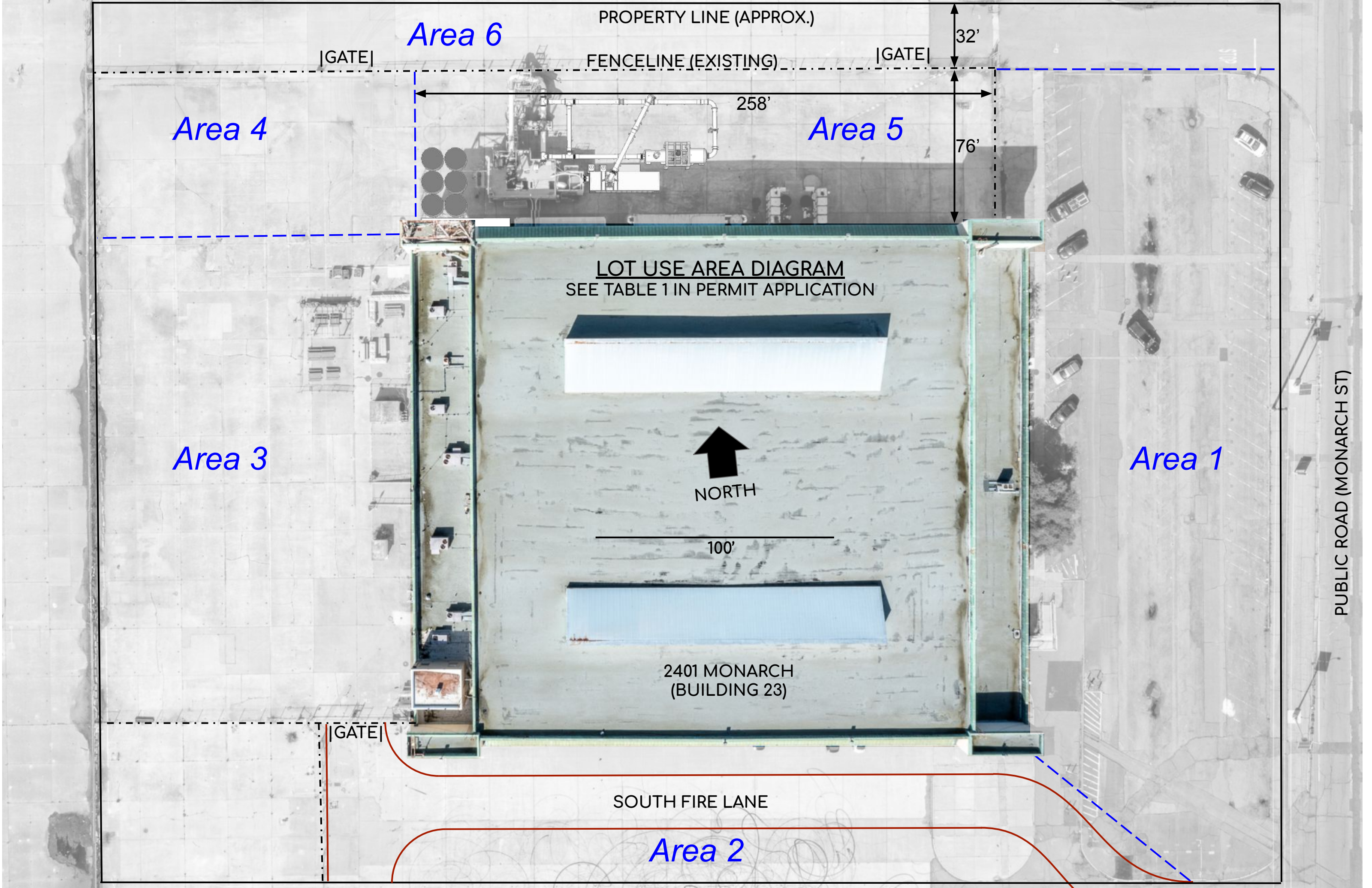


NATEL ENERGY PROPOSED
SCALE TEST MODEL
EQUIPMENT - LOCATION
RELATIVE TO VIEW CORRIDORS

VIEW CORRIDOR OVERLAY v.2
GBC

IMAGE SOURCE: CITY OF
ALAMEDA, ALAMEDA POINT
PRECISE PLAN

2024 NATEL ENERGY INC.
GREGOR CADMAN, C.O.O.
GREGOR@NATELENERGY.COM
617.413.0778



Area 6

PROPERTY LINE (APPROX.)

|GATE|

FENCELINE (EXISTING)

|GATE|

32'

258'

Area 4

Area 5

76'

LOT USE AREA DIAGRAM
SEE TABLE 1 IN PERMIT APPLICATION

Area 3

Area 1



NORTH

100'

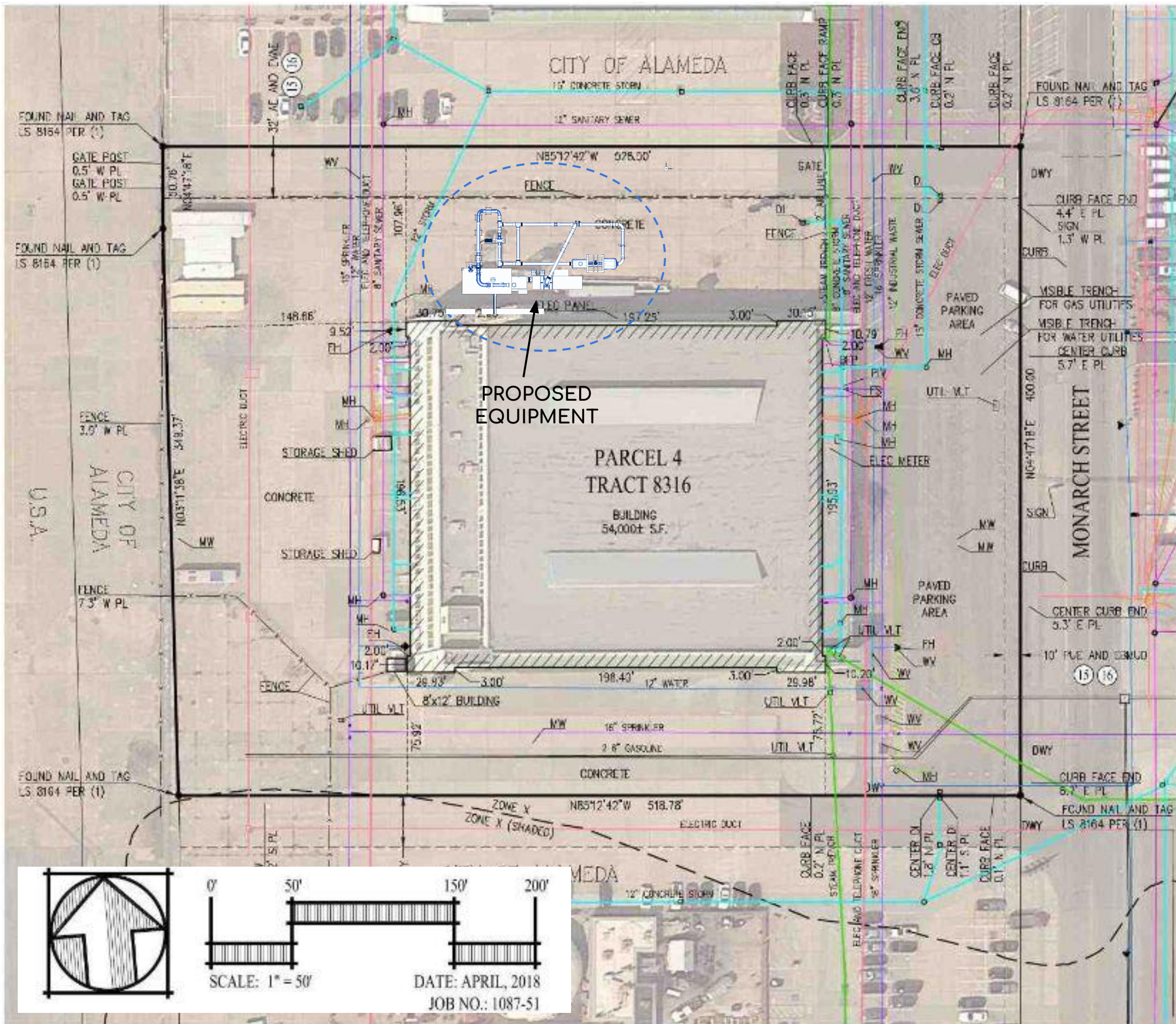
2401 MONARCH
(BUILDING 23)

|GATE|

SOUTH FIRE LANE

Area 2

PUBLIC ROAD (MONARCH ST)



NATEL ENERGY PROPOSED
SCALE TEST MODEL
EQUIPMENT - LOCATION

ALTA SURVEY OVERLAY v.2

IMAGE SOURCE: CITY OF
ALAMEDA 2018 ALTA SURVEY

2024 NATEL ENERGY INC.
GREGOR CADMAN, C.O.O.
GREGOR@NATELENERGY.COM
617.413.0778

