

I-880 Operational and Safety Improvements at 29th Avenue and 23rd Avenue Overcrossings



Agenda – May 20, 2014 City Council Meeting

- Agency Roles
- Project Overview
- Review Actions from 9-26-12 Transportation Commission Meeting
- Construction Staging & Detours
- Traffic Management Plan During Construction
- Caltrans Public Information Officer
- Questions / Comments

Agency Roles

- Alameda CTC
 - *Funding Partner*
 - *Project Development*

- Caltrans
 - *Construction Administration*
 - *Traffic Management Plan*
 - *Public Outreach*

Project Overview – Existing Condition



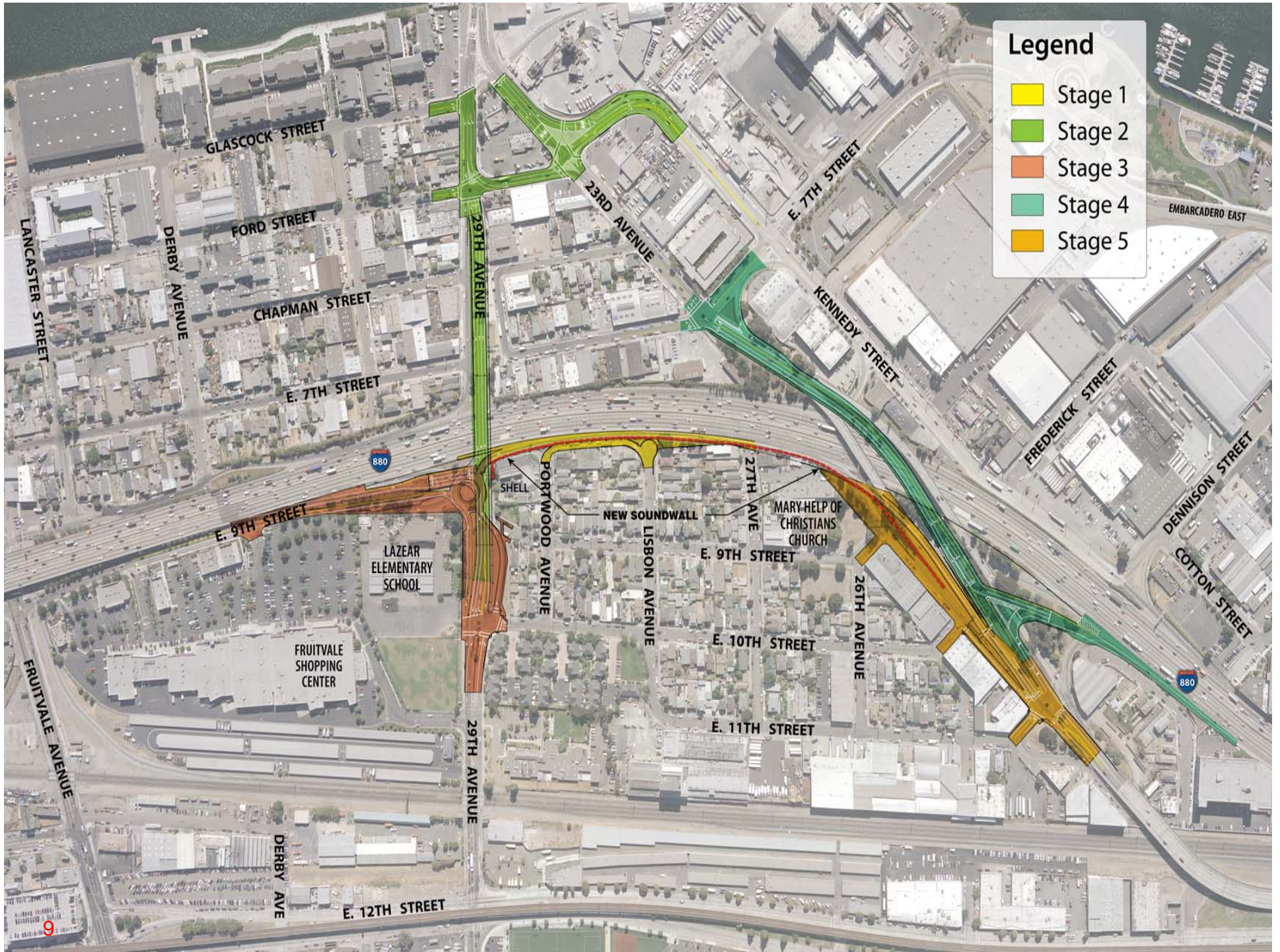
Project Overview – Proposed Condition



Transportation Commission Review

- Coordination Meeting with AC Transit
 - *Review Operations During Construction*
 - *Review Operations After Construction*
- Incorporation of Transit into Contingency Plan
- Incorporation of Transit into Public Information Program

Construction Staging & Detours



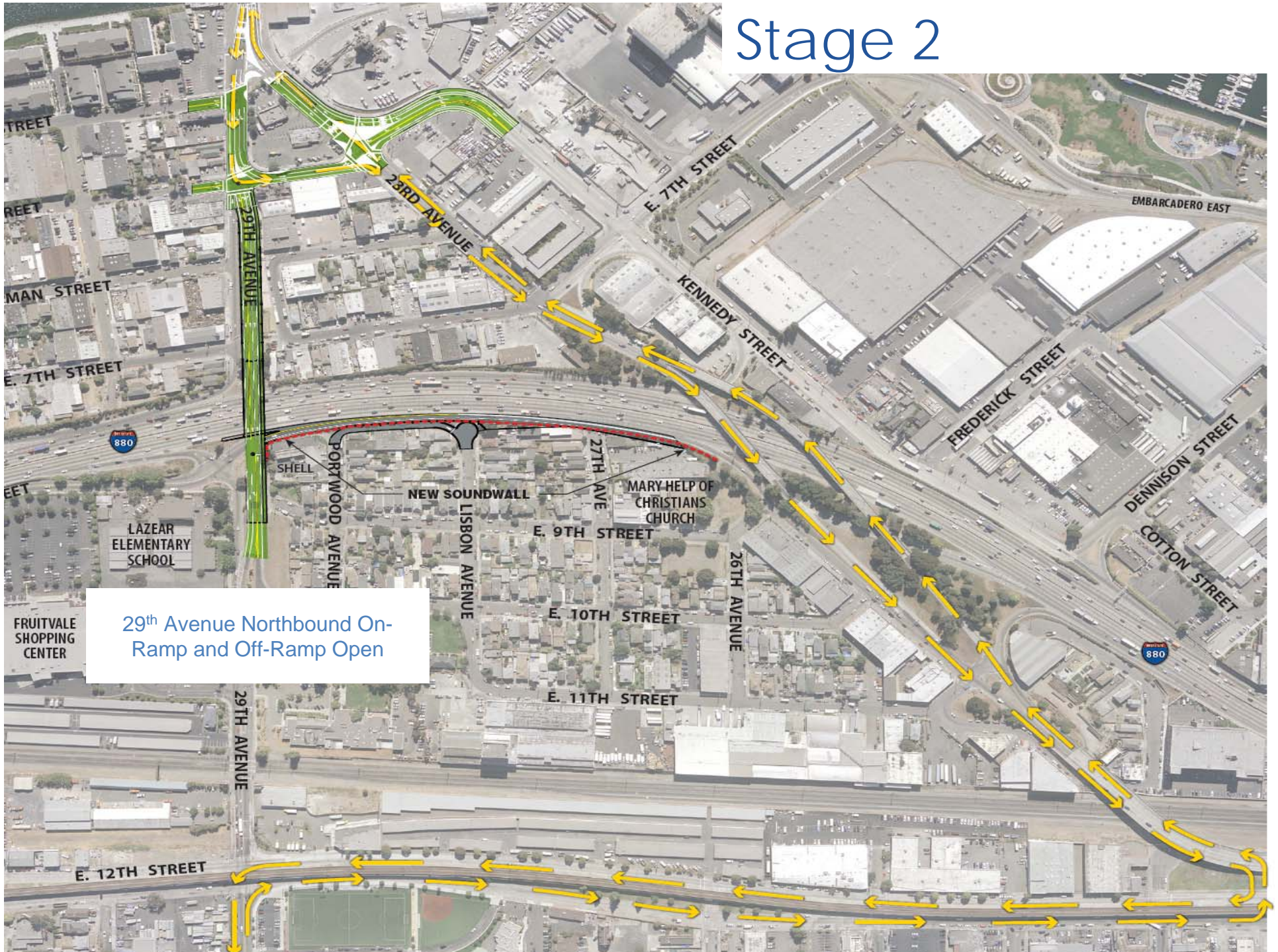
Legend

- Stage 1
- Stage 2
- Stage 3
- Stage 4
- Stage 5

Stage 1

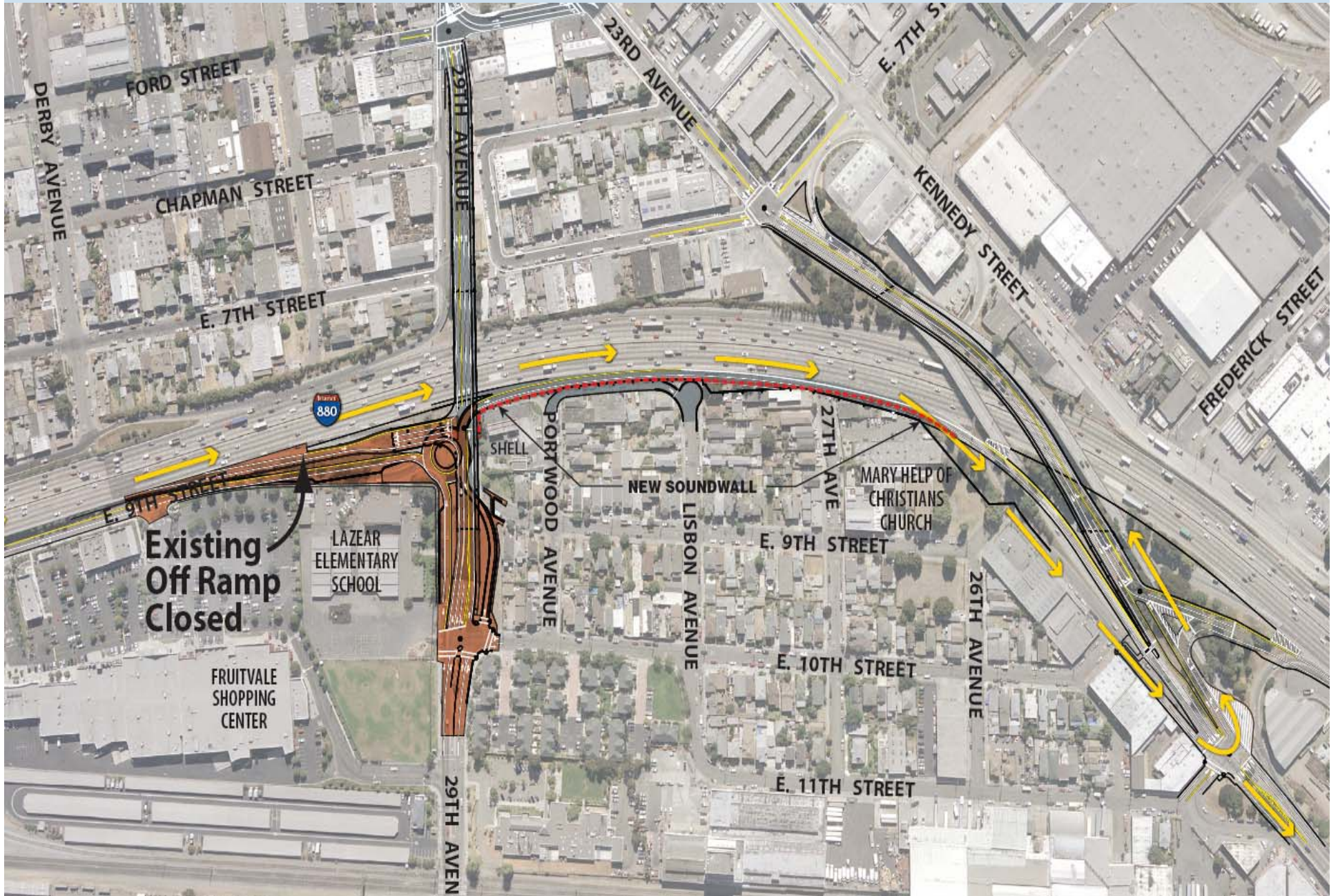


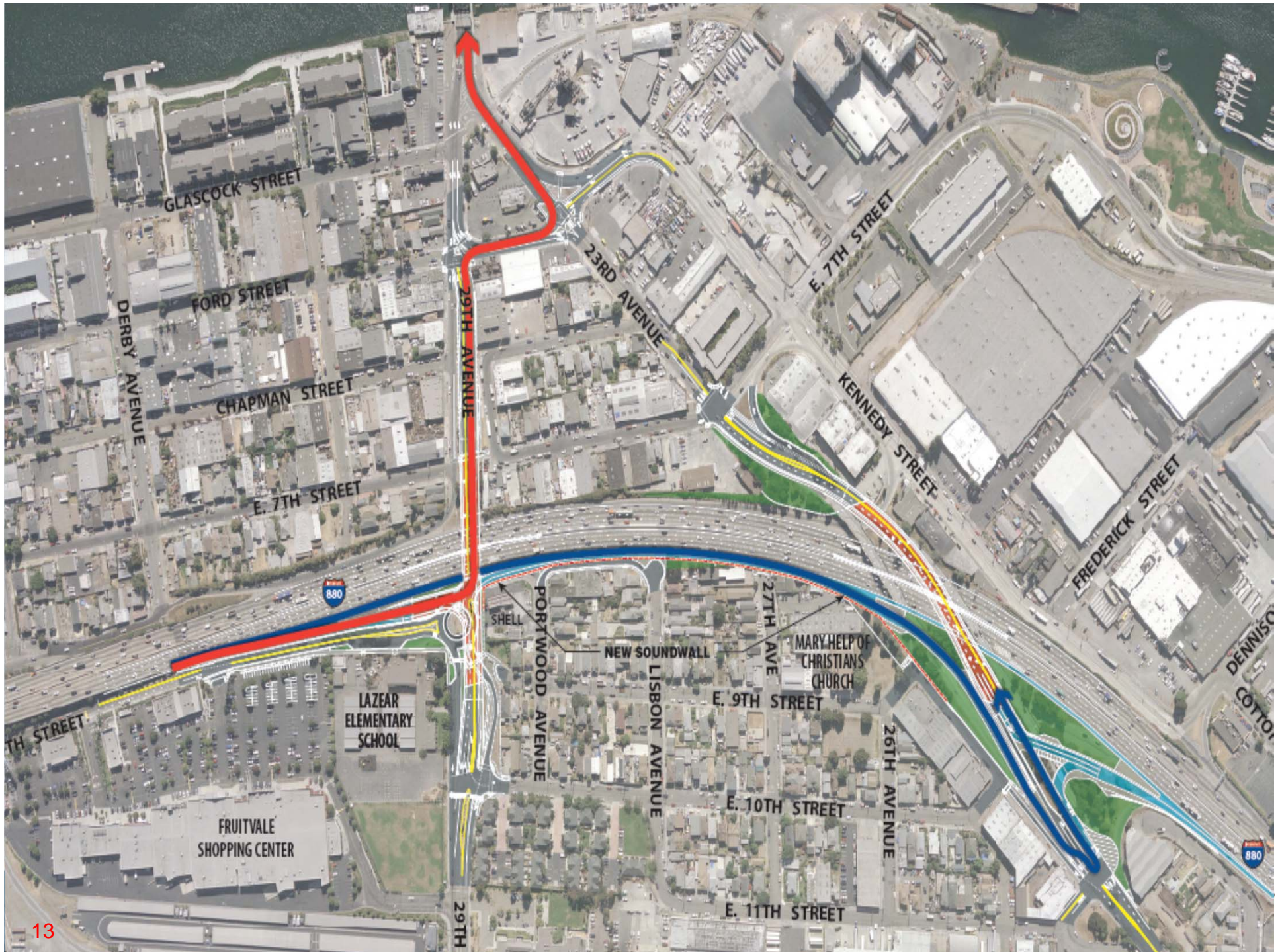
Stage 2



29th Avenue Northbound On-Ramp and Off-Ramp Open

Stage 3



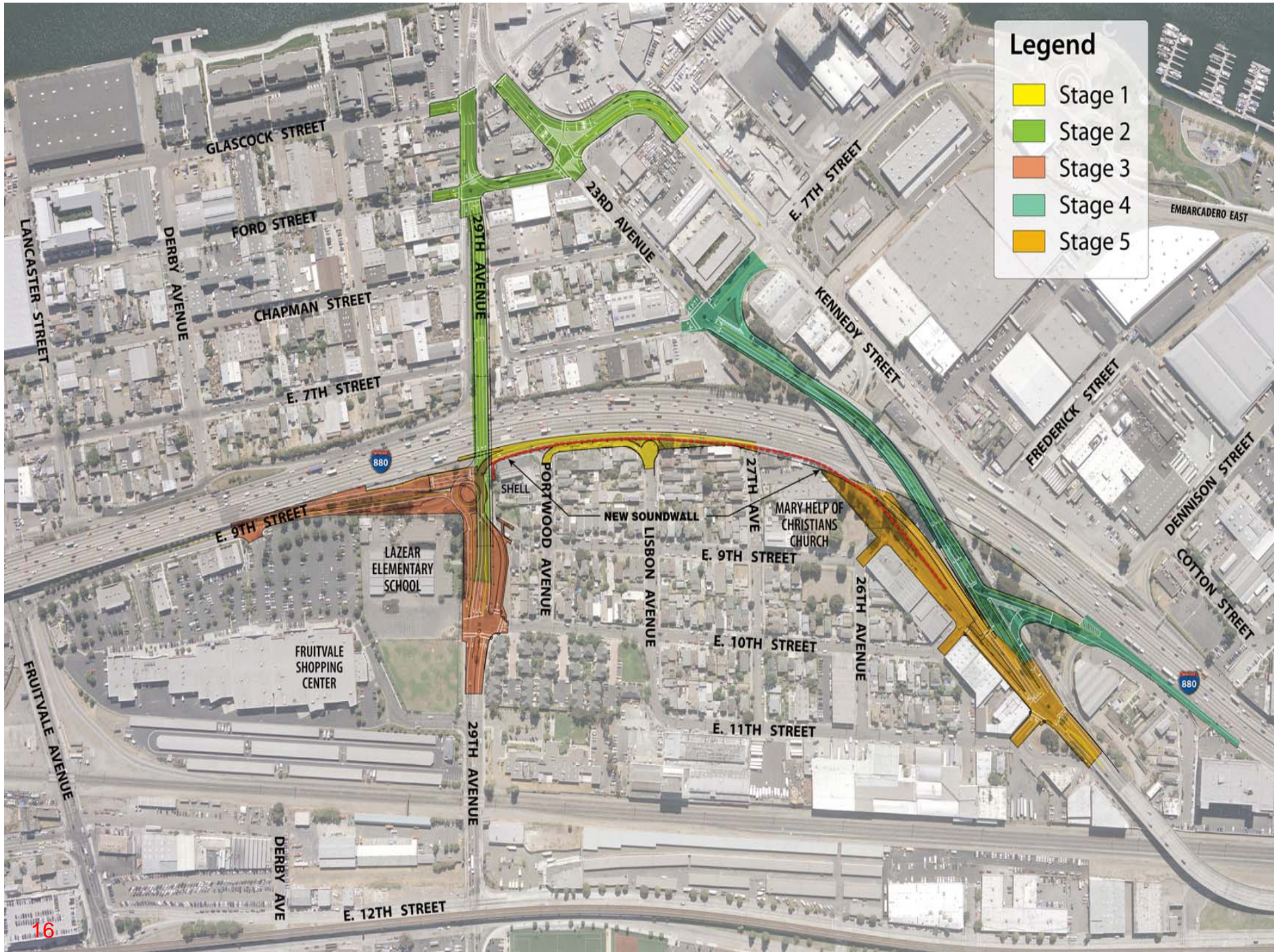


Stage 4



Stage 5





Legend

- Stage 1
- Stage 2
- Stage 3
- Stage 4
- Stage 5

Traffic Management Plan

- Construction strategies – construction staging, lane closure coordination, reduce speed zone
- Traveler Information: CMS and construction area signs
- Incident Management: CHP, Freeway Service Patrol, Traffic Management Center
- Traffic Monitoring – observation during closures, CCTV, signal timing & alternative detours
- Public Information – flyers, press releases, hot line, web site

Traffic Management Plan (cont'd)

- Contingency Planning –

Corridor Traffic Management Contingency Plan (CTMCP) Committee consisting of one member each from City of Oakland, City of Alameda and Caltrans. The Committee can be convened to meet at any time via request by City of Oakland staff, City of Alameda staff or Caltrans staff to attempt to minimize traffic impacts during traffic closures or detours.

Traffic Management Plan (cont'd)

- For long term closures, a 7 day “trial” period after closure will be implemented to monitor traffic conditions. City of Oakland, City of Alameda and Caltrans will monitor traffic conditions. Committee will meet within 24 hours from the initial substantial traffic impact encountered, and to come to a consensus within 48 hours of the meeting and implement proposed solution to minimize traffic impact.

Public Outreach

- Open House Meetings
- Alameda
 - *Held April 8th @ Alameda Main Library, Alameda*
 - *Additional meeting(s) may be held; for time and location visit website.*
 - *Public notified through flyers, newspaper advertising, and website.*
- Oakland
 - *Held April 24th @ Unity Council at Fruitvale Station*

Public Outreach

- Project Website
 - <http://www.dot.ca.gov/dist4/projects/88023rd29thovercrossing/>
 - *Translations of Flyer in Spanish.*
- Social Media
 - *Follow us on Twitter @CaltransD4.*

End of Presentation