

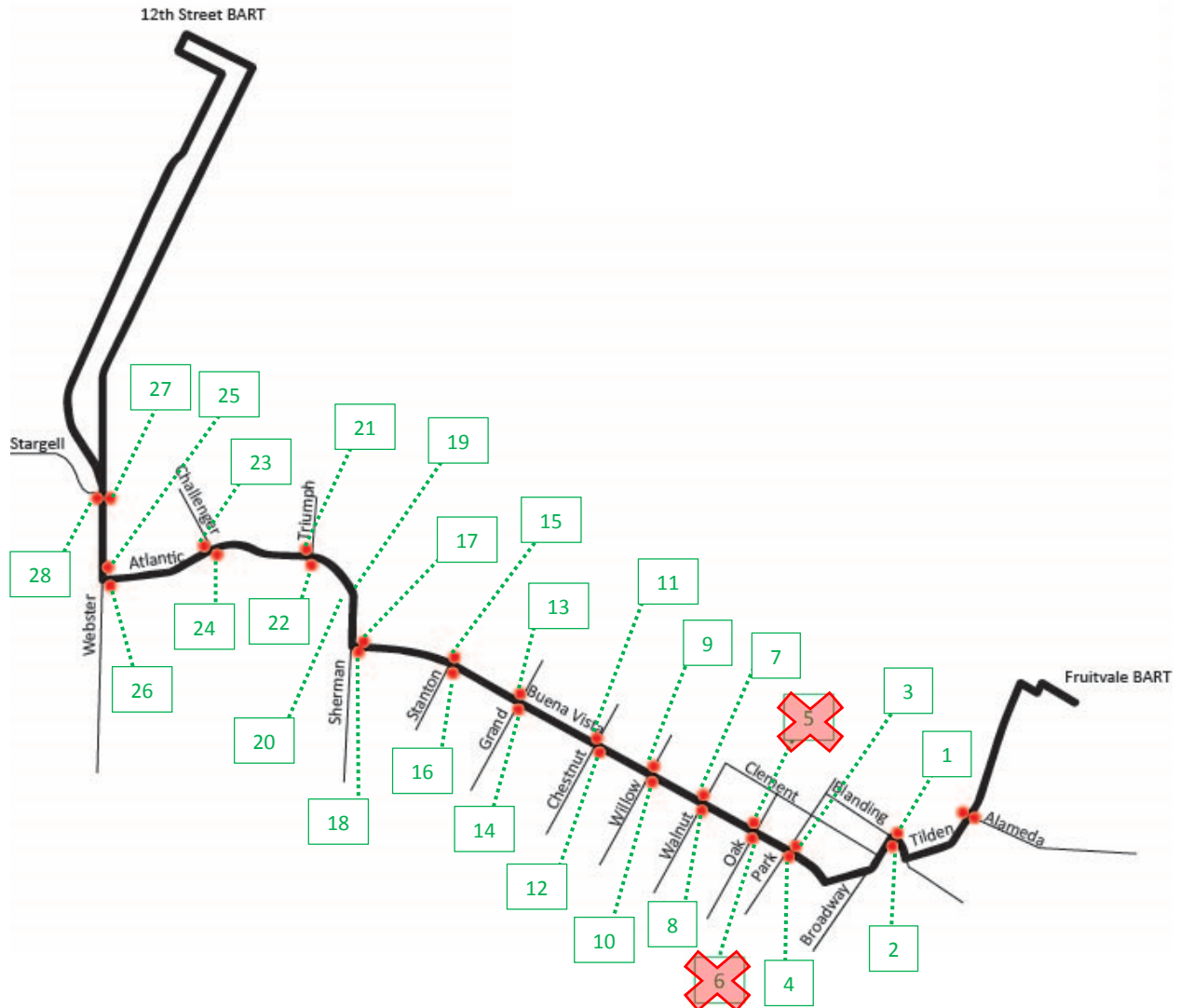
RECOMMENDED Locations for Bus Stops for Line 19
May 16, 2016

DETAILS OF **RECOMMENDED** BUS STOPS FOR AC TRANSIT'S LINE 19 WITH MAP, PHOTOS AND IMPROVEMENTS/CHANGES

AC Transit is introducing a new Line 19, using parts of the former Line 19, through Alameda. The new line will provide bus transit service between Fruitvale and 12th Street BART Stations via Alameda along Webster Street, Atlantic Avenue, Buena Vista Avenue, Broadway, Blanding Avenue and Tilden Way.

The City of Alameda and AC Transit staff have developed **updated** bus stop locations, as shown on the map below. This document provides pictures of each of the general locations, an estimated number of parking spaces lost, and other likely needed changes to the locations. Please note that "Farside" and "nearside" of intersection refers to the far side or near side of the intersection, *with respect to the direction of travel*.

MAP: LINE 19 BUS ROUTE and RECOMMENDED BUS STOP LOCATIONS



#1 Westbound, Broadway at Blanding Avenue, Farside

Existing bus stop location. No parking spaces lost.



#2 Eastbound, Blanding Avenue at Broadway, Farside

Existing bus stop. No parking spaces lost.



#3A Westbound, Buena Vista Avenue at Park Street, Farside

~~2 parking spaces lost. AC Transit had proposed this farside stop, since farside stops generally improve efficiency of bus service. City staff's preliminary analysis found that the distance between the centerline and face of curb is too narrow to provide a bus stop, and vehicles going around the bus would encroach onto oncoming traffic. Staff has provided bus stop 3B as an alternative.~~

There is not enough room for a vehicle to pass a stopped bus.



#3B Westbound, Buena Vista Avenue at Park Street, Nearside

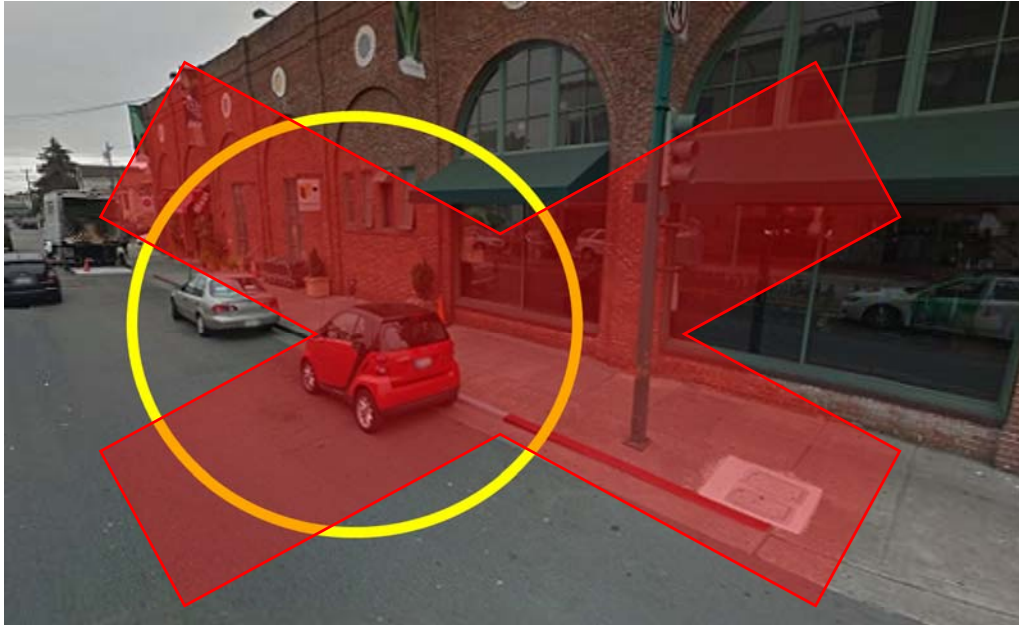
2 parking spaces lost. Staff has provided this nearside stop as an alternative to bus stop 3A.



#4A Eastbound, Buena Vista Avenue at Park Street, Farside

~~3 parking spaces lost. AC Transit had proposed this farside stop, since farside stops generally improve efficiency of bus service. In the instance that bus stop 4A is not supported, AC Transit has suggested bus stop 4B and staff has provided bus stop 4C for consideration.~~

Business concerns of parking loss, already a bus stop on the Park St side of this corner.



#4B Eastbound, Buena Vista Avenue at Park Street, Nearside

No parking spaces lost. AC Transit has provided this nearside stop as an alternative to bus stop 4A.



#4C Eastbound, Buena Vista Avenue at Park Street, Nearside

No parking spaces lost. Staff has provided this nearside stop as an alternative to bus stops 4A and 4B.



#5 Westbound, Buena Vista Avenue at Oak Street, Farside

~~2 parking spaces lost.~~

Location is close to the Park Street stop.



#6 Eastbound, Buena Vista Avenue at Oak Street, Farside

~~2 parking spaces lost. Potential changes to the planter strip. It may be paved over to allow for ADA access.~~

Location is close to the Park Street stop.



#7 Westbound, Buena Vista Avenue at Walnut Street, Farside

Add 43 feet of red curb; equivalent of 2 parking spaces lost.



#8 Eastbound, Buena Vista Avenue at Walnut Street, Farside

Add 66 feet of red curb; equivalent of 3 parking spaces lost. Potential changes to the planter strip. It may be paved over to allow for ADA access.



#9 Westbound, Buena Vista Avenue at Willow Street, Farside

No parking spaces lost. Existing red curb. Potential changes to the pavement by the curb for ADA access.



#10 Eastbound, Buena Vista Avenue at Willow Street, Farside

Add 45 feet of red curb (includes one driveway); equivalent of 2 parking spaces lost. Potential changes to the planter strip. It may be paved over to allow for ADA access.



#11 Westbound, Buena Vista Avenue at Chestnut Street, Farside

Add 30 feet of red curb; equivalent of 2 parking spaces lost. Potential changes to the planter strip. It may be paved over to allow for ADA access.



#12 Eastbound, Buena Vista Avenue at Chestnut Street, Farside

Add 50 feet of red curb (includes two driveways); equivalent of 1 parking space lost.



#13A Westbound, Buena Vista Avenue at Grand Street, Nearside

1 parking space lost. In the instance that bus stop 13A is not supported, staff has provided bus stop 13B for consideration.

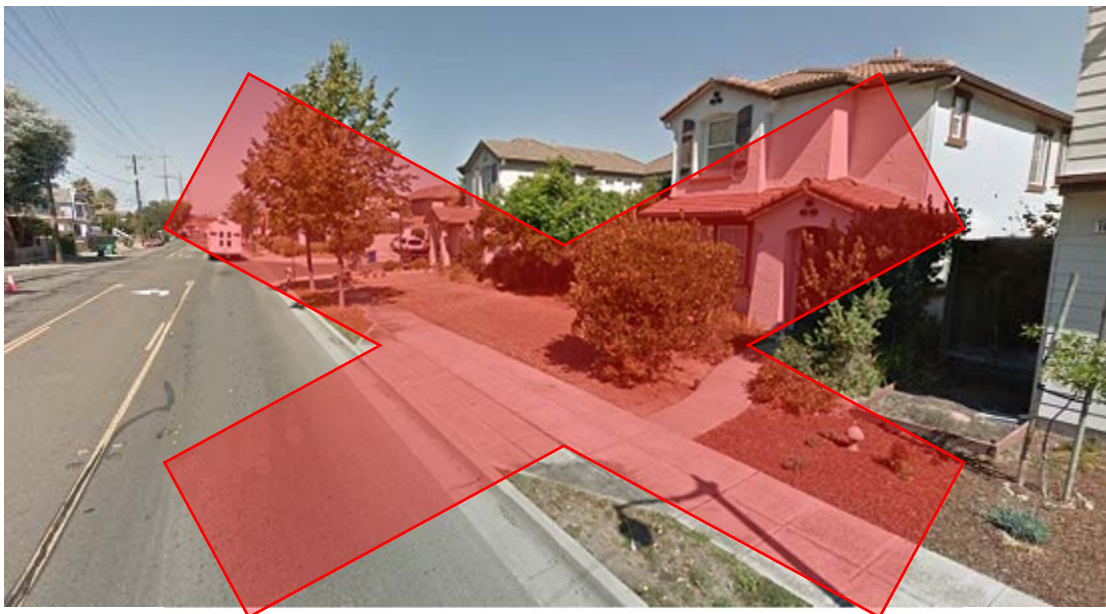
Due to the two existing driveways, ADA access is not possible.



#13B Westbound, Buena Vista Avenue at Paru Street, Nearside

No parking spaces lost. Existing ADA bus pad. Staff has provided this nearside stop as an alternative to bus stop 13A. This stop is approximately 550 feet west of stop 13A.

This midblock stop is not acceptable to AC Transit.



#13C (NEW) Westbound, Buena Vista Avenue at Minturn Street, Farside

Add 40 feet of red curb (includes driveway); equivalent of 1 parking space lost.
Installation of an ADA pad is required.

Note: The two parked vehicles are in a red zone in front of a fire hydrant.



#14 Eastbound, Buena Vista Avenue at Grand Street, Farside

Add 20 feet of red curb; equivalent of 1 parking space lost.

Note: The vehicle in the picture is parked in front of the driveway.



#15 Westbound, Buena Vista Avenue at Stanton Street, Farside
No parking spaces lost.



#16 Eastbound, Buena Vista Avenue at Stanton Street, Farside
Add 45 feet of red curb (includes one driveway); equivalent of 2 parking spaces lost.
Installation of ADA pad required.



#17 Westbound, Buena Vista Avenue at Sherman Street, Nearside

No parking spaces lost. Potential changes to the planter strip. It may be paved over to allow for ADA access. Stop will be placed at Streetlight # 1313. Vehicles will still be able to pass stopped buses in order to enter the right turn pocket.



#18 Eastbound, Buena Vista Avenue at Sherman Street, Farside

4 parking spaces lost.



#19 Westbound, Atlantic Avenue at Wind River Way, Farside

No parking spaces lost. City must provide an ADA pad in order for a bus stop to be installed here.



#20 Eastbound, Atlantic Avenue at Wind River Way, Nearside

No parking spaces lost. This would location would require additional ADA and pedestrian improvements.



#21 Westbound, Atlantic Avenue at Triumph Drive, Farside
No parking spaces lost. Existing bus bay.



#22 Eastbound, Atlantic Avenue at Triumph Drive, Nearside
No parking spaces lost. Existing bus bay.



#23A Westbound, Atlantic Avenue at Challenger Drive, Farside

No parking spaces lost. There are potential changes to the planter strip; it may be paved over to allow for ADA access. AC Transit had proposed this farside stop, since farside stops generally improve bus service efficiency. ~~City staff's preliminary analysis found that vehicles may not have enough room to pass a stopped bus due to the existing infrastructure. Staff has provided bus stop 23B as an alternative.~~ Staff recommends this location with a bus bay is installed. Traffic will be obstructed and heavily impacted without one.



#23B Westbound, Atlantic Avenue at Challenger Drive, Nearside

No parking spaces lost. ~~Potential changes to the planter strip; it may be paved over to allow for ADA access. Staff has provided this nearside stop as an alternative to bus stop 23A.~~

Farside stops provide better visibility of pedestrians.



#24 Eastbound, Atlantic Avenue at Challenger Drive, Farside
No parking spaces lost. Existing bus bay.



#25 Westbound, Webster Street at Atlantic Avenue, Farside
Existing bus stop. No parking spaces lost.



#26 Eastbound, Atlantic Avenue at Webster Street, Farside
Existing bus stop. No parking spaces lost.



#27 Westbound, Webster Street at Stargell Avenue, Nearside
Existing bus stop. No parking spaces lost.



#28 Eastbound, Webster Street at Stargell Avenue, Farside
Existing bus stop. No parking spaces lost.

