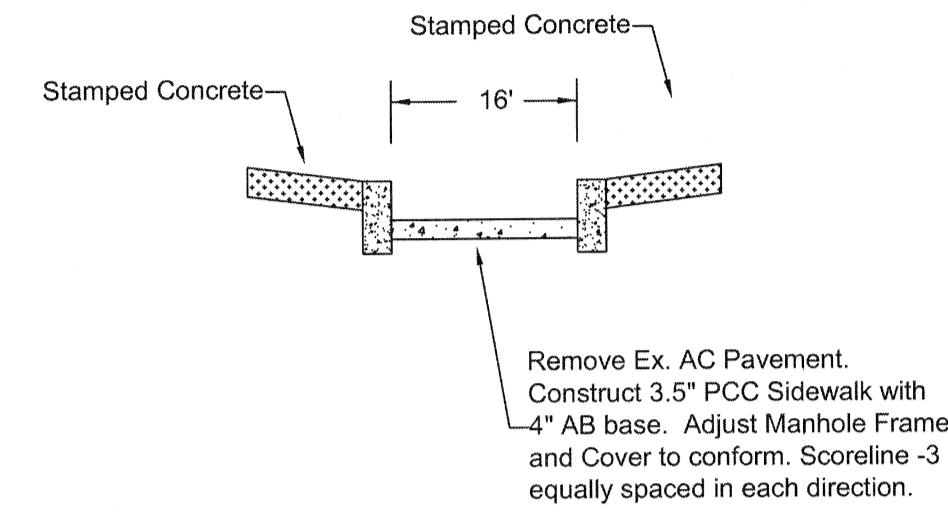


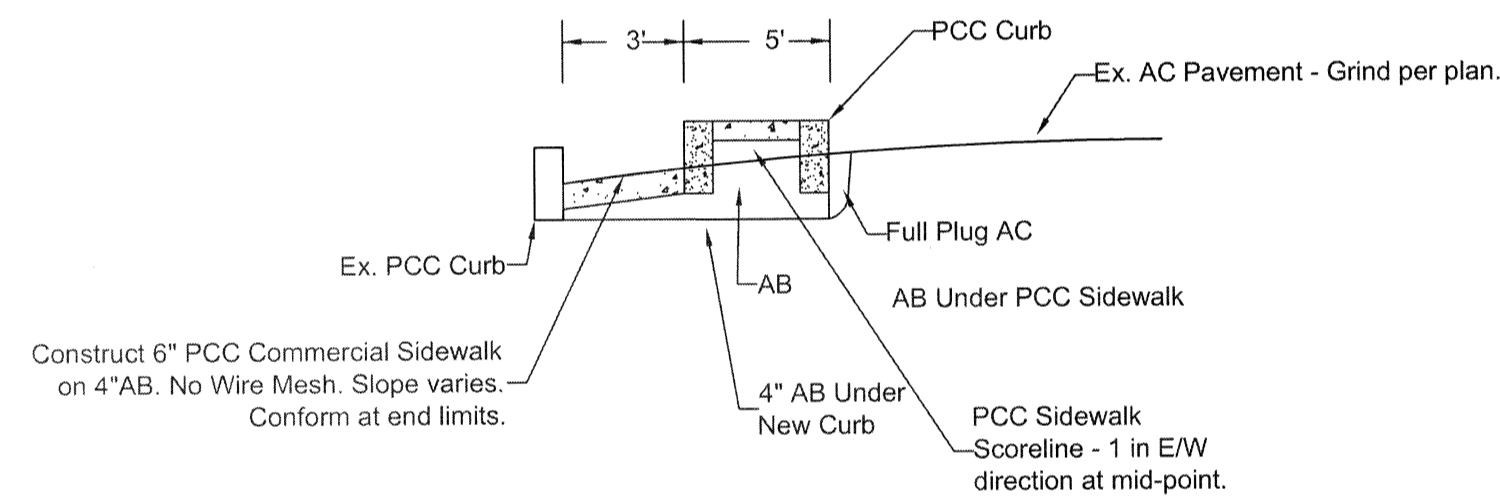
DETAIL A-A
TYPICAL STREET CROSS SECTION
WITH PROPOSED TRAFFIC MEDIAN,
STREET GRIND AND PAVEMENT RESURFACING

NOT TO SCALE

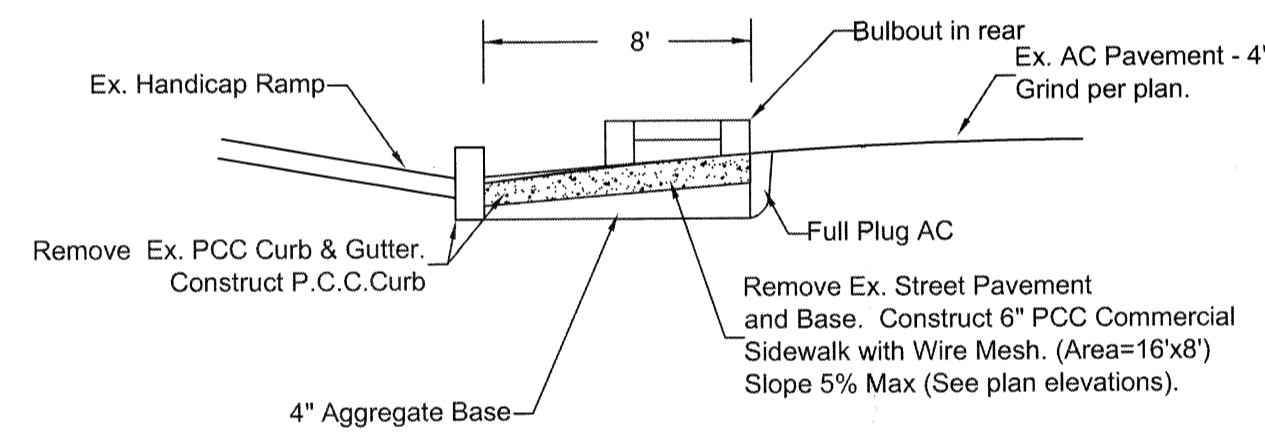


DETAIL B-B

NOT TO SCALE

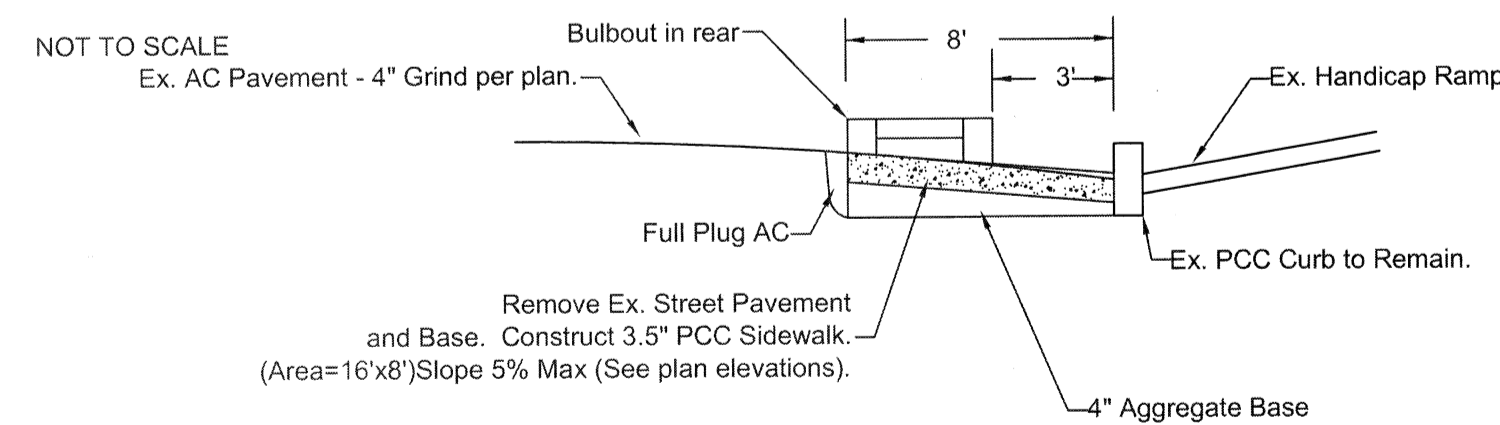


DETAIL C-C
TYPICAL BULB-OUT
SECTION



DETAIL D-D

NOT TO SCALE



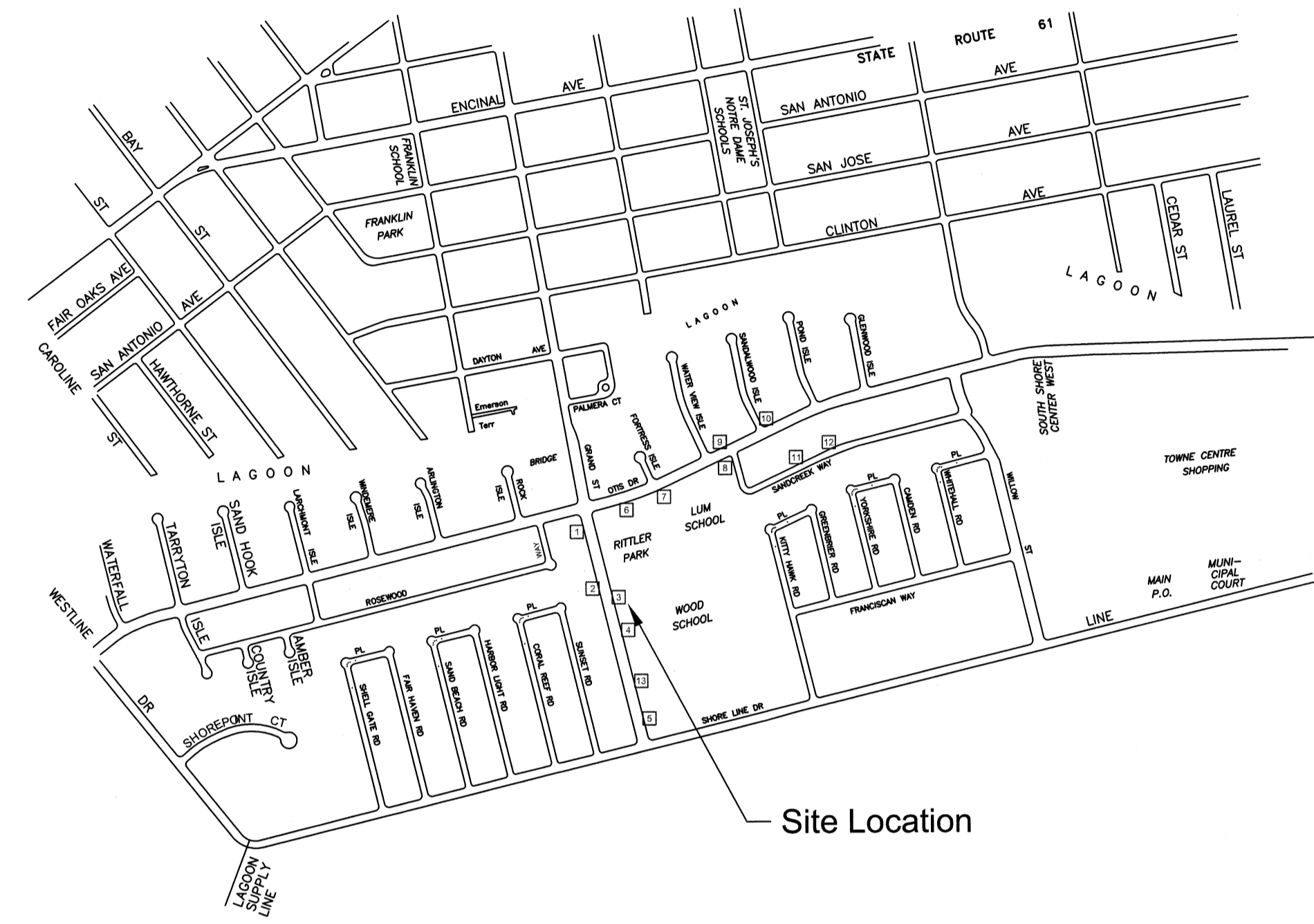
DETAIL E-E

NOT TO SCALE



DETAIL F-F
IRRIGATION SLEEVE
TRENCH RECONSTRUCTION
SECTION

NOT TO SCALE



VICINITY MAP

SHEET INDEX

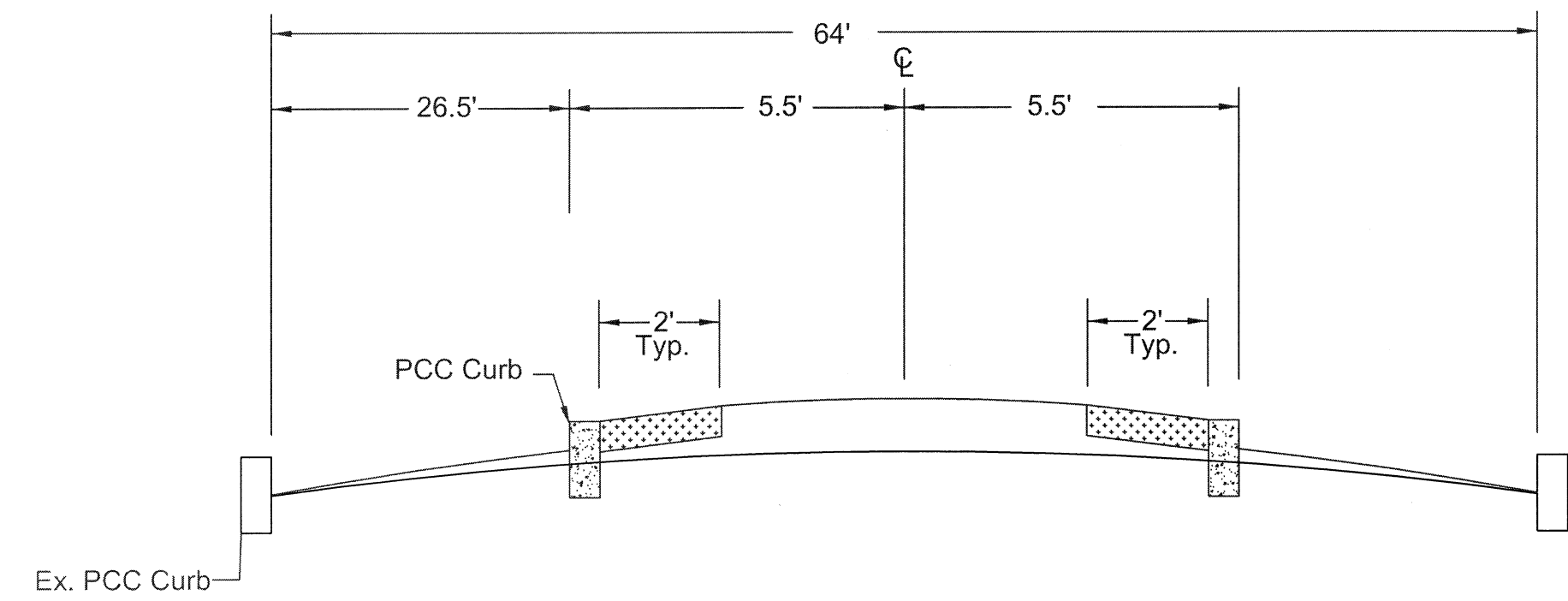
- Sheet 1: Sections and Vicinity Map
- Sheet 2: Hardscape Improvements
- Sheet 3: Traffic Striping & Signage
- Sheet 4: Landscape, Irrigation & Fence Improvements
- Sheet 5: Median and Bulbout Layout



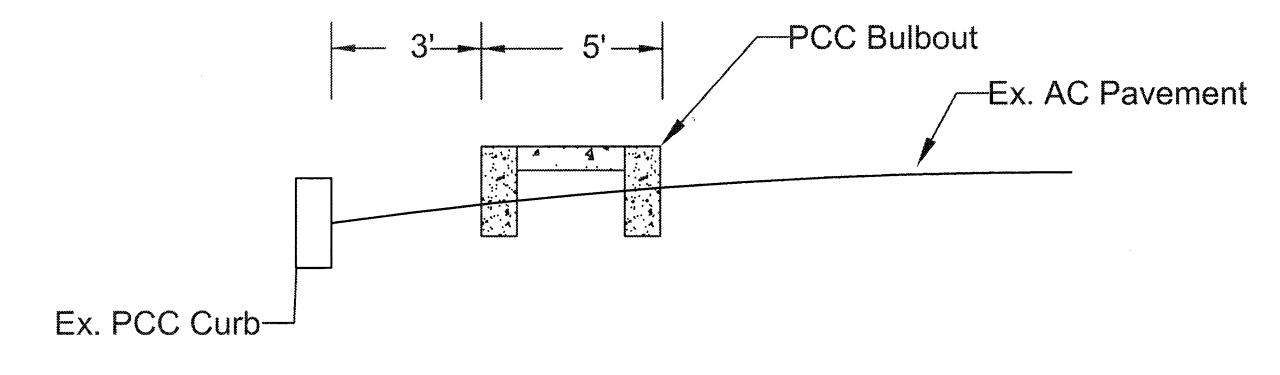
BENCH MARK		REFERENCE		NO.		REVISION		BY		APP.	
CITY OF ALAMEDA CALIFORNIA ENGINEERING DEPARTMENT RAISED MEDIAN AND CURB BULBOUTS ON GRAND STREET AT WOOD SCHOOL											
DESIGNED: <i>Ta. Paune, Sommerauer</i> DRAWN: <i>Ta. Sommerauer</i> CHECKED: <i>Sommerauer</i> DATE: 04-24-14 SCALE: No Scale										APPROVED BY: _____ CITY ENGINEER DATE: _____ SHEET: 1 OF 5 DWG: 9375 CASE: 25	

G:\pubworks\vip\Grand St. Wood School\plot sheet.dwg 4/29/2014 10:00 AM

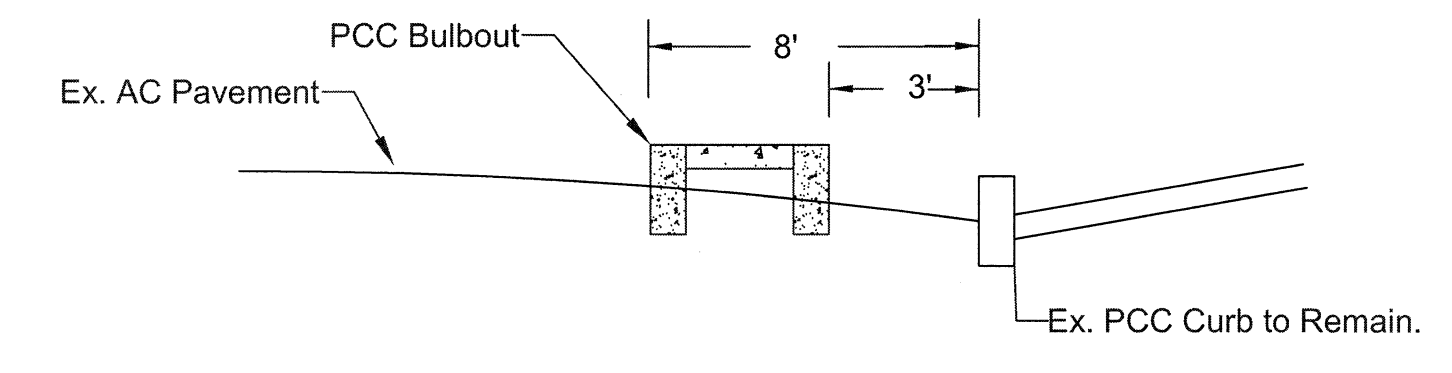
G:\pubworks\vcip\Grand St Wood School\plot sheet.dwg 4/29/2014 10:05 AM



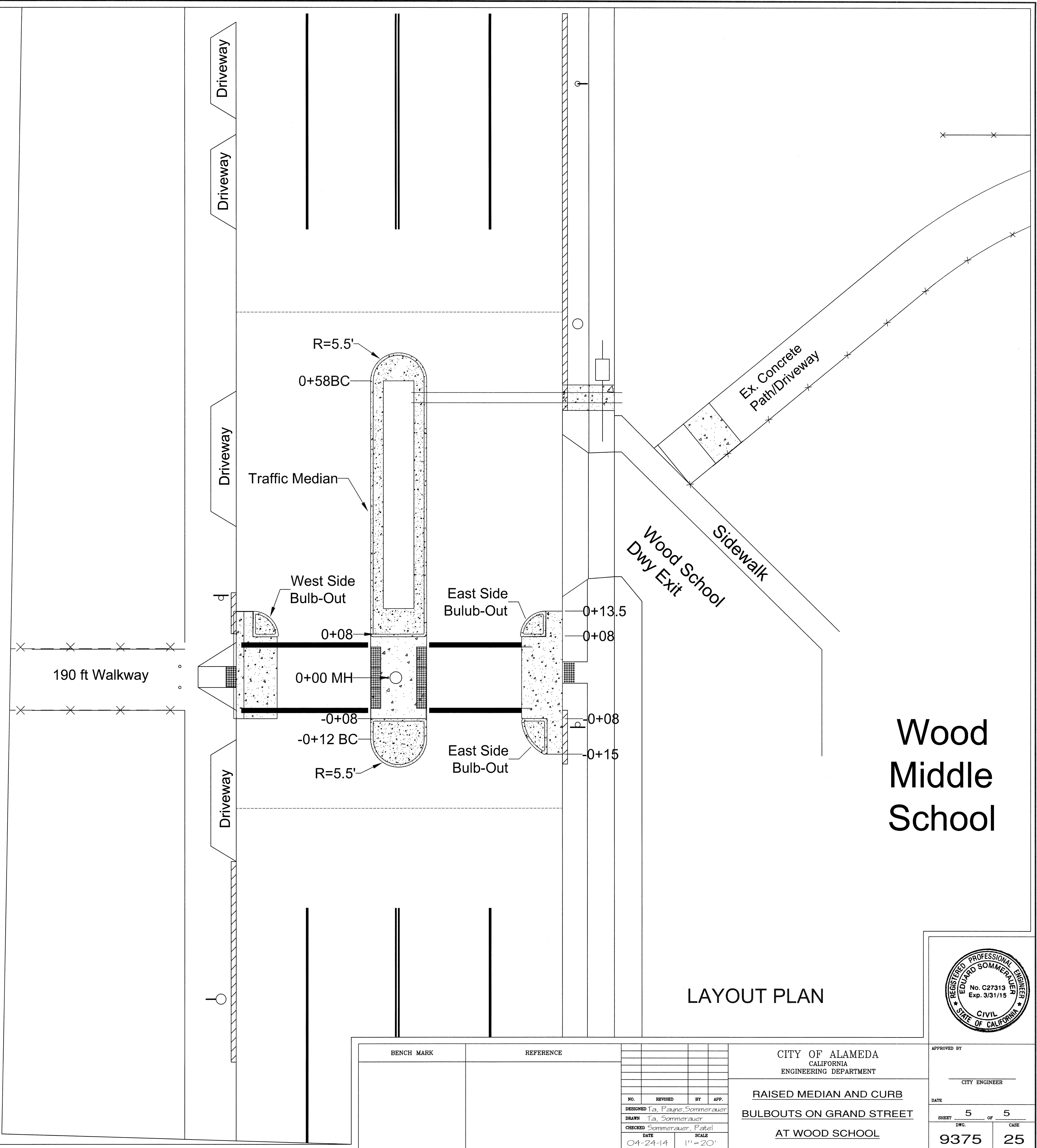
TRAFFIC MEDIAN LAYOUT
NOT TO SCALE



TYPICAL BULB-OUT WEST SIDE STREET SECTION
NOT TO SCALE



TYPICAL BULB-OUT EAST SIDE STREET SECTION
NOT TO SCALE



Wood Middle School

LAYOUT PLAN

BENCH MARK		REFERENCE		CITY OF ALAMEDA CALIFORNIA ENGINEERING DEPARTMENT		APPROVED BY CITY ENGINEER	
				RAISED MEDIAN AND CURB		DATE	
				BULBOUTS ON GRAND STREET		SHEET 5 OF 5	
				AT WOOD SCHOOL		DWC CASE	
				NO. REVISED BY APP. DESIGNED Ta. Payne, Sommerauer DRAWN Ta. Sommerauer CHECKED Sommerauer, Patel DATE 04-24-14 SCALE 1" = 20'		REGISTERED PROFESSIONAL ENGINEER EDWARD SOMMERAUER No. C27313 Exp. 3/31/15 CIVIL STATE OF CALIFORNIA	
						9375 25	