

ALAMEDA POINT

Enterprise District / Alameda, CA



COMMUNITY • VISION • FUTURE • OPPORTUNITY

82 Acre Development Opportunity

The Best Major Waterfront Development Site on the San Francisco Bay
Fully Entitled Parcels for Users and Developers
Parcels from 9.1 to 23.9 Contiguous Acres

John H. McManus, CCIM, MCR
Lic. #01129064
Executive Vice President
john.mcmanus@cushwake.com

Ted J. Anderson
Lic. #01332000
Director
ted.anderson@cushwake.com

Andrew Schmieder
Lic. #01828740
Associate Director
andrew.schmieder@cushwake.com

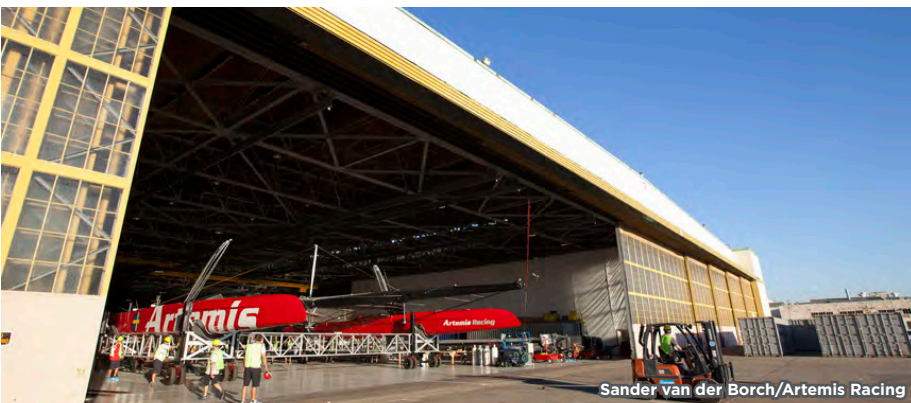
Cushman & Wakefield
1111 Broadway, Suite 1600
Oakland, CA 94607
(510) 763 4900

ALAMEDA POINT Enterprise District / Alameda, CA

Background

Located in the heart of the San Francisco Bay Area, the now decommissioned Naval Air Station presents a prime opportunity for redevelopment. With an iconic waterfront setting, stunning views, large tracts of available land area, and close proximity to both Oakland and Downtown San Francisco, Alameda Point is a once-in-a-generation opportunity.

The Community Reuse Plan's objectives are to seamlessly integrate Alameda Point with the rest of the city to create a strong employment and commercial base with a mix of open space, recreational, residential, and retail uses.



Sander van der Borch/Artemis Racing

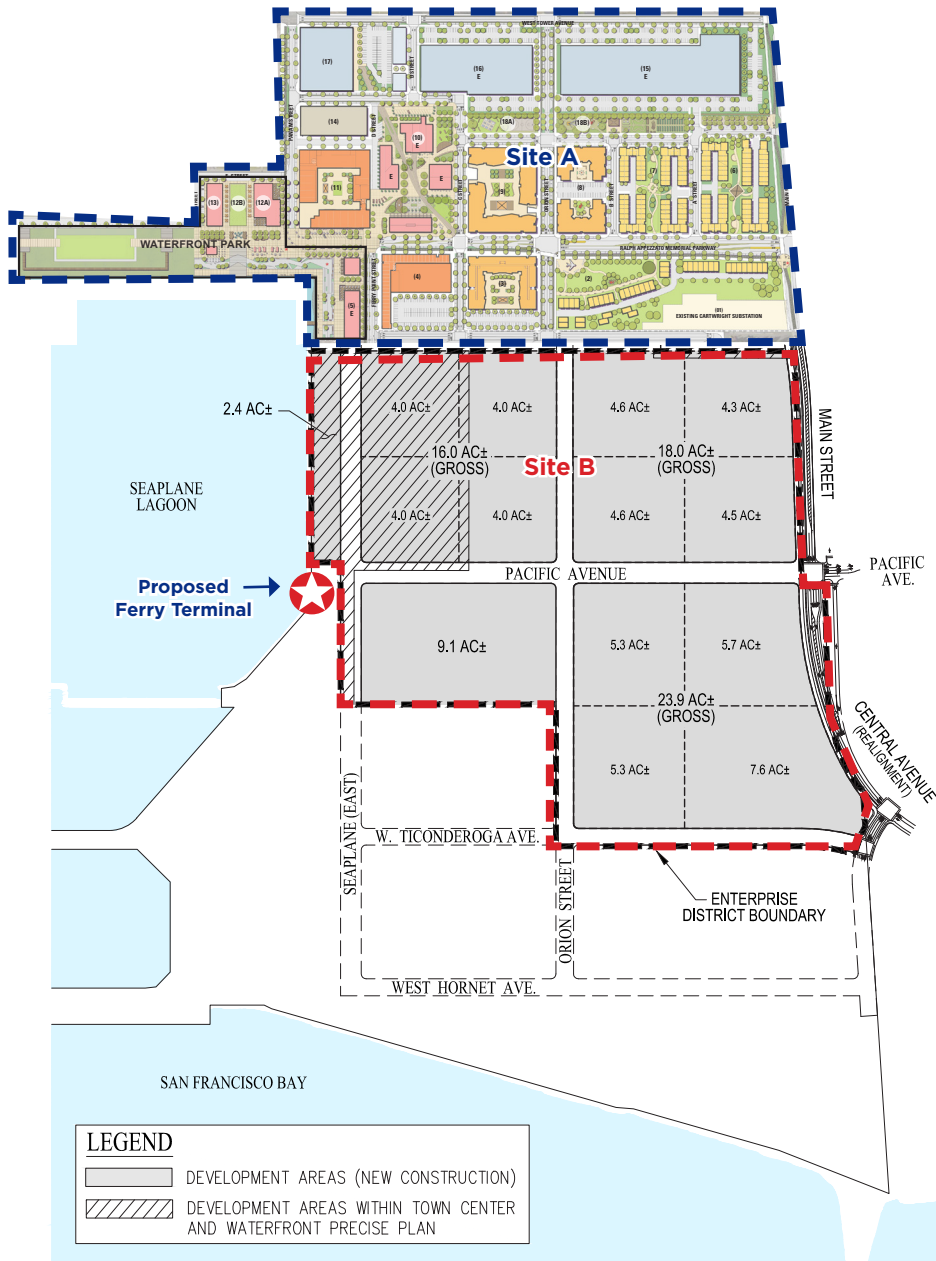


The Bladium is the existing recreational hub of Alameda Point

ALAMEDA POINT TENANTS

ADVANCED ROOFING ♦ AIRCRAFT CARRIER HORNET FOUNDATION
 ♦ ALAMEDA COMMUNITY SAILING COMMUNITY ♦ ALAMEDA DEVELOPMENT CORP ♦ ALAMEDA MUNICIPAL POWER ♦ ALAMEDA NATIONAL WILDLIFE REFUGE ♦ **ALAMEDA NAVAL AIR MUSEUM** ♦ ALAMEDA POINT COLLABORATIVE ♦ ALAMEDA POINT STORAGE
 ♦ ALAMEDA SOCCER CLUB ♦ AMBER KINETICS ♦ ANTIQUES BY THE BAY ♦ **ARTEMIS RACING USA** ♦ AT&T ♦ BAY SHIP AND YACHT COMPANY ♦ **BLADIUM** ♦ BRIX BEVERAGE ♦ BUILDING 43 WINERY
 ♦ CHABOT SPACE & SCIENCE CENTER ♦ CHANGING GEARS ♦ COMPLETE COACH WORKS ♦ CONMAR, INC ♦ CONTAINER STORAGE
 ♦ DELPHI PRODUCTIONS ♦ DREYFUSS CAPITAL PARTNERS ♦ EDGE INNOVATIONS ♦ ENVIRONMENTAL MANAGEMENT SERVICES
 ♦ EVENT PRODUCTIONS ♦ **FACTION BREWING** ♦ FRIENDS OF ALAMEDA THEATER ♦ GFC MOVING & STORAGE ♦ **GOOGLE** ♦ **HANGAR 1** ♦ KAI CONCEPTS ♦ LOVE FELLOWSHIP ♦ MARAD ♦ NATEL ENERGY ♦ NAVIGATOR SYSTEMS ♦ NRC ENVIRONMENTAL
 ♦ O'KALANI OUTRIGGER CANOE CENTER ♦ PACIFIC FINE FOODS ♦ PHOTON COMPOSITES INC ♦ PLOUGH SHARE NURSERY ♦ POWER ENGINEERING ♦ PUGLIA ENGINEERING ♦ RAIN DEFENSE ♦ RENOVARE INTERNATIONAL, INC ♦ **ROCKWALL WINE COMPANY**
 ♦ SACCHI ENTERPRISES ♦ SAILDRONE ♦ SBA COMMUNICATIONS ♦ **ST. GEORGE SPIRITS** ♦ SUSTAINABLE TECHNOLOGIES ♦ THE PACIFIC PINBALL MUSEUM ♦ TURNKEY PRODUCTIONS ♦ VOLOCHEM, INC ♦ WALASHEK INDUSTRIAL MARINE ♦ WATERTIGHT RESTORATION ♦ WEST COAST NOVELTY ♦ WONKY KITCHEN

ALAMEDA POINT Enterprise District / Alameda, CA



Enterprise District Development Opportunity

Character and Land Uses within the Enterprise District

- **Thriving Employment Center.** Potential uses: executive and/or research and development office, technology campus, manufacturing, and light industrial applications.
- **New Commercial Block.** Buildings will be organized around a grid of tree-lined streets with on-street parking and a network of parks and civic spaces.
- **Maximum Permitted Height For Buildings.** 100 feet, with the exception of buildings that front along the west side of Main Street which would be restricted to 40 feet in height in order to provide reasonable transition to the adjacent residential neighborhood to the east of the site.



ALAMEDA POINT Enterprise District / Alameda, CA

Amenities

- **Bay Trail.** The Bay Trail will consist of a Class I separated bicycle and pedestrian path.
- **Ferry Terminal and Transit Service Access.** The future Seaplane Lagoon ferry terminal will serve as a multi-modal transportation hub.
- **Sports & Recreation.** Existing tenant Bladium is a 175,000 SF indoor/outdoor sports club. Future plans include a 44-acre sports complex that may include a gym, skate park, aquatic facility, ballfields, multi-purpose fields, volleyball, tennis and basketball courts.
- **Seaplane Lagoon Waterfront Promenade.** Waterfront park that includes visitor serving, waterfront related uses such as concessions related to maritime activities, boat rentals, hotels and restaurants.
- **Enterprise Park.** These lands are located along the southern waterfront of Alameda Point with extensive views of the San Francisco Bay.
- **Spirits Alley.** Located along Monarch Street, Spirits Alley is a cluster of artisan distilleries and tasting rooms which include Rock Wall Wine Company, Faction Brewing, Hanger 1 Vodka, & St. George Spirits.
- **Site A Retail.** 100,000 to 150,000 SF of destination-oriented ground floor retail space, offering a “town center” environment integrated into the vibrant Alameda Point Community.

For more information, please contact:

John H. McManus, CCIM, MCR
 Lic. #01129064
 Executive Vice President
john.mcmanus@cushwake.com

Andrew Schmieder
 Lic. #01828740
 Associate Director
andrew.schmieder@cushwake.com

Ted J. Anderson
 Lic. #01332000
 Director
ted.anderson@cushwake.com

Cushman & Wakefield
 1111 Broadway, Suite 1600
 Oakland, CA 94607
 (510) 763 4900

