

# SURVEY INSIDE



**ALAMEDA**

**Residents & Property Owners:**

**Our City has  
significant  
infrastructure needs.**

**We hope to hear from you!**



# City of Alameda

April 2024

**Dear City of Alameda Resident:**

**Your input is needed!** The City of Alameda is committed to providing public services and facilities that contribute to maintaining your high quality of life. Every day, our City employees work hard to support community safety, preserve the quality of our neighborhood parks, libraries, and roads, and prioritize emergency preparedness for natural disasters like rising sea and ground water levels and flooding.

**We want to hear from you before important decisions are made.**

Here's our challenge: The City of Alameda has been careful with its maintenance dollars, but our General Fund budget for maintenance is nowhere near enough to address the critical needs of Alameda—from pothole repair to protecting our shoreline. The preservation of our community **requires significant investment in infrastructure.**

Our City leaders are actively exploring solutions to address our infrastructure needs with community input. One option being considered is to propose an infrastructure bond measure to help spur investment in our City's most critical needs.

**No decisions have been made but we'd like your input. Please join the conversation.**

You can complete our survey via the tear-off response card attached here, respond online by visiting **[www.alamedaca.gov](http://www.alamedaca.gov)**, or email us with your input at: **[feedback@alamedaca.gov](mailto:feedback@alamedaca.gov)**.

Please respond—we value your feedback. We are listening! Thank you.

Sincerely,

**Jennifer Ott**, City Manager





# Our City's Greatest Needs:



► **AFFORDABLE HOUSING:** Support the creation of affordable housing units, including repurposing vacant lots for residential development and providing shelter for the unhoused, all of which help address rising rental expenses.

► **PROTECT OUR SHORELINE:** Our bridges, tunnels, homes, and wildlife need protection from natural disasters such as flooding, rising sea and ground water levels, erosion, and earthquakes.



► **STREETS & ROADS:** Repair potholes, repave and maintain roads, and improve pedestrian and bicycle safety with safe sidewalks and crosswalks.

► **PUBLIC SAFETY & COMMUNITY INFRASTRUCTURE:** Invest in making our community safer by improving outdated police and fire stations and replacing aging infrastructure to prevent power outages, stormwater drainage and sewer systems problems.



## What Do You Think?

**City of Alameda Residents:** Your feedback is important to us. Please respond.

For additional information, please visit:

**[www.alamedaca.gov](http://www.alamedaca.gov)**

Email: [feedback@alamedaca.gov](mailto:feedback@alamedaca.gov)

Phone: (510) 747-4700



# CITY SURVEY

Your input is important to us.

Complete and return this survey by mail or take this survey online. Scan the QR code or go to:

[www.alamedaca.gov](http://www.alamedaca.gov)

Please rank these City of Alameda priorities in order of their importance to you (1 = most important, 5 = least important).



► **AFFORDABLE HOUSING:** Support the creation of affordable housing units, including repurposing vacant lots for residential development and providing shelter for the unhoused, all of which help address rising rental expenses.

☐

► **PROTECT OUR SHORELINE:** Our bridges, tunnels, homes, and wildlife need protection from natural disasters such as flooding, rising sea and ground water levels, erosion, and earthquakes.

☐

► **STREETS & ROADS:** Repair potholes, repave and maintain roads, and improve pedestrian and bicycle safety with safe sidewalks and crosswalks.

☐

► **PUBLIC SAFETY & COMMUNITY INFRASTRUCTURE:** Invest in making our community safer by improving outdated police and fire stations and replacing aging infrastructure to prevent power outages, stormwater drainage and sewer systems problems.

☐

► **OTHER:** \_\_\_\_\_

☐

*Comments/questions:*

---

---

---

---

---

---

*Contact information is optional:*

NAME

ADDRESS

CITY

STATE

ZIP

PHONE

EMAIL

PLACE  
1st CLASS  
STAMP  
HERE

---

---

---

---

City of Alameda  
City Hall  
2263 Santa Clara Avenue  
Alameda, CA 94501

ATTN: City Manager Jennifer Ott





**ALAMEDA**

**City of Alameda**

2263 Santa Clara Avenue  
Alameda, CA 94501

# Our City has significant infrastructure needs.



**SURVEY INSIDE**

**We hope to hear from you!**



[www.alamedaca.gov](http://www.alamedaca.gov)



[feedback@alamedaca.gov](mailto:feedback@alamedaca.gov)



(510) 747-4700





#### SURVEY INSIDE



Residents & Property Owners:  
**Our City has  
significant  
infrastructure needs.**  
We hope to hear from you!

**Recently, we asked for your input  
on City of Alameda priorities.**

**Here's what you told us...**





# City of Alameda



## Dear City of Alameda Residents:

Thank you for sharing your priorities for the City of Alameda. Your input is helping us serve you better and shape the future of our city.

Our recent City of Alameda mailer generated a huge response. All together, we received over 3,000 completed surveys and 1,500 personal comments from residents. Here are a few examples:

*"Public safety is essential to building a strong community, a strong community is what makes Alameda so great." — Gordon W.*

*"Reducing crimes!! Keeping Alameda safe..." — Linda F.*

*"Please continue to make Alameda more walkable and bikeable! Reduce cars on the road." — Dave H.*

*"I am a senior resident. There are many areas in Alameda where I don't feel entirely safe walking, biking, and driving. Traffic, especially from off Island, to work and shop is often very fast and not always cautious... There are lots of important things to do, but keeping people safe is #1." — K.C.*



**Thank you, City of Alameda!** Your input helps inform the City's process. We will be exploring the feasibility of an infrastructure bond to spur investment in our City's most critical needs and allow us to provide the services and facilities most valued by our community.

The City Council may be making important decisions about a possible ballot measure this summer. If a bond measure is placed on the ballot, City of Alameda voters will vote on it in November.

Thank you again for your interest and ongoing support of our city! Your opinions matter to us. For more information, please read this publication or visit [www.alamedaca.gov](http://www.alamedaca.gov).

Sincerely,

**Jennifer Ott**, City Manager





# Thank you, Alameda. We appreciate your input!

## Top Community Priority Rankings

City priorities ranked in order of importance by survey respondents

**DATA SOURCE:** Over 3,000 + surveys received via mail and online.

**#1**

### **PUBLIC SAFETY AND COMMUNITY INFRASTRUCTURE**

Invest in making our community safer by improving outdated police and fire stations and replacing aging infrastructure to prevent power outages, stormwater drainage, and sewer systems problems.

**#2**

### **STREETS AND ROADS**

Repair potholes, repave and maintain roads, and improve pedestrian and bicycle safety with safe sidewalks and crosswalks.

**#3**

### **PROTECT OUR SHORELINE**

Our bridges, tunnels, homes, and wildlife need protection from natural disasters such as flooding, rising sea and ground water levels, erosion, and earthquakes.

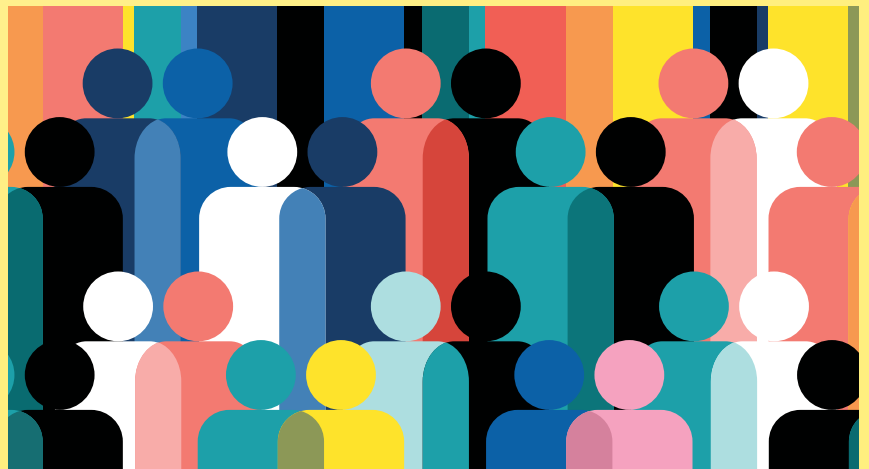
**#4**

### **AFFORDABLE HOUSING**

Support the creation of affordable housing units, including repurposing vacant lots for residential development and providing shelter for the unhoused, all of which help address rising rental expenses.

## **City Council Meetings/Actions:**

The City Council may be making important decisions regarding a potential ballot measure this summer. If a bond measure is placed on the ballot, Alameda voters will have the opportunity to vote on it in November.



[www.alamedaca.gov](http://www.alamedaca.gov)



[feedback@alamedaca.gov](mailto:feedback@alamedaca.gov)



(510) 747-4700



**ALAMEDA**

City of Alameda

2263 Santa Clara Avenue  
Alameda, CA 94501

# Frequently Asked Questions

## What is this project all about?

As a full-service City committed to providing essential services in a fiscally responsible manner, we prioritize sustaining the services most valued by residents: improving public safety, reducing flood risks, combating shoreline erosion and natural disasters, creating affordable housing, maintaining quality streets and roads, and keeping our neighborhoods safe.

The City's facilities plan provides solutions and allocates funding for a wide range of services to improve infrastructure. Although our city has long-term financial forecasts and infrastructure plans, we have identified budget deficits and significant funding needs for repair and replacement in the upcoming years.

The City is now considering new revenue options to responsibly address community needs. City leaders are engaging with the community to ensure residents' voices are heard before important decisions are made.

## What are the City's greatest needs that make this project necessary?

- ▶ **PROTECTING OUR SHORELINE:** Investing in addressing climate-related challenges such as protecting our bridges, tunnels, and wildlife from natural disasters such as flooding, rising sea levels, erosion, winds, and earthquakes.
- ▶ **STREETS & ROADS:** Repairing potholes, repaving and maintaining roads, and improving pedestrian and bicycle safety by providing safer sidewalks and crosswalks.
- ▶ **PUBLIC SAFETY & COMMUNITY INFRASTRUCTURE:** Investing in updating outdated police and fire stations and replacing aging infrastructure to prevent power outages, stormwater drainage issues, and sewer system problems.
- ▶ **AFFORDABLE HOUSING:** Supporting the creation of affordable housing units, including repurposing vacant lots for residential development and providing shelter for the unhoused, all of which help address rising rental expenses.

## What is the City doing to manage its finances responsibly?

The City makes every effort to use resources wisely. The City of Alameda has been careful with its maintenance dollars but it's not enough to address its critical needs.

We need to consider other sources of funding, including a General Obligation (GO) bond, to invest in Alameda's future.

## What solution is being considered?

The City has been evaluating various funding options to generate additional revenues to support City services and infrastructure.

Although no decisions have been made, City leaders are assessing options that would help raise revenues to close the current funding gap, such as placing a possible revenue measure on the November 2024 ballot.

A potential bond measure would require approval from Alameda voters to take effect. Funding for the bond would be sourced from property taxes, ensuring an equitable distribution of costs among property owners in the community. Implementation of this measure would allow Alameda's residents to maintain their current quality of life and preserve community benefits for the future.

## What would funds raised by a possible bond measure go toward?

This bond measure would go towards funding the City's most crucial infrastructure needs including:

- ▶ **Maintaining** rapid 911 emergency response by upgrading police and fire stations for better neighborhood safety, improving emergency and disaster preparedness.
- ▶ **Repairing** potholes, repaving and maintaining local roads, and improving pedestrian safety with safe sidewalks and crosswalks.
- ▶ **Maintaining and replacing** aging infrastructure and facilities to make our community safer and prevent power outages, flooding, and sewer system problems.

## Does the City have a facilities plan for spending money raised by a new measure?

If a measure is placed on the ballot and approved by voters, funds would be allocated directly to the City's improvement needs. The City Council would oversee decision-making regarding the allocation of funds, with a likely focus on addressing the priorities outlined above.

## How much would an infrastructure bond measure cost?

While no decisions have been made yet, if the City Council votes to issue \$150,000,000 in bonds, with an average levy of \$29 per \$100,000 of assessed value, it would generate approximately \$19,500,000 annually while the bonds are outstanding. This transparent process requires independent oversight and a published audit.

## When would an infrastructure bond measure be placed on the ballot?

If there is support from the community to consider placing a bond measure on a future ballot, the City Council could take action this summer. To qualify for the November 2024 election, the City must file the bond measure with the Alameda County Registrar of Voters by August 9, 2024.

## Where can I go for more information?

For more information, email [feedback@alamedaca.gov](mailto:feedback@alamedaca.gov) or call (510) 747-4700.

[www.alamedaca.gov](http://www.alamedaca.gov)

*Provided as a public service by the City of Alameda June 2024.*