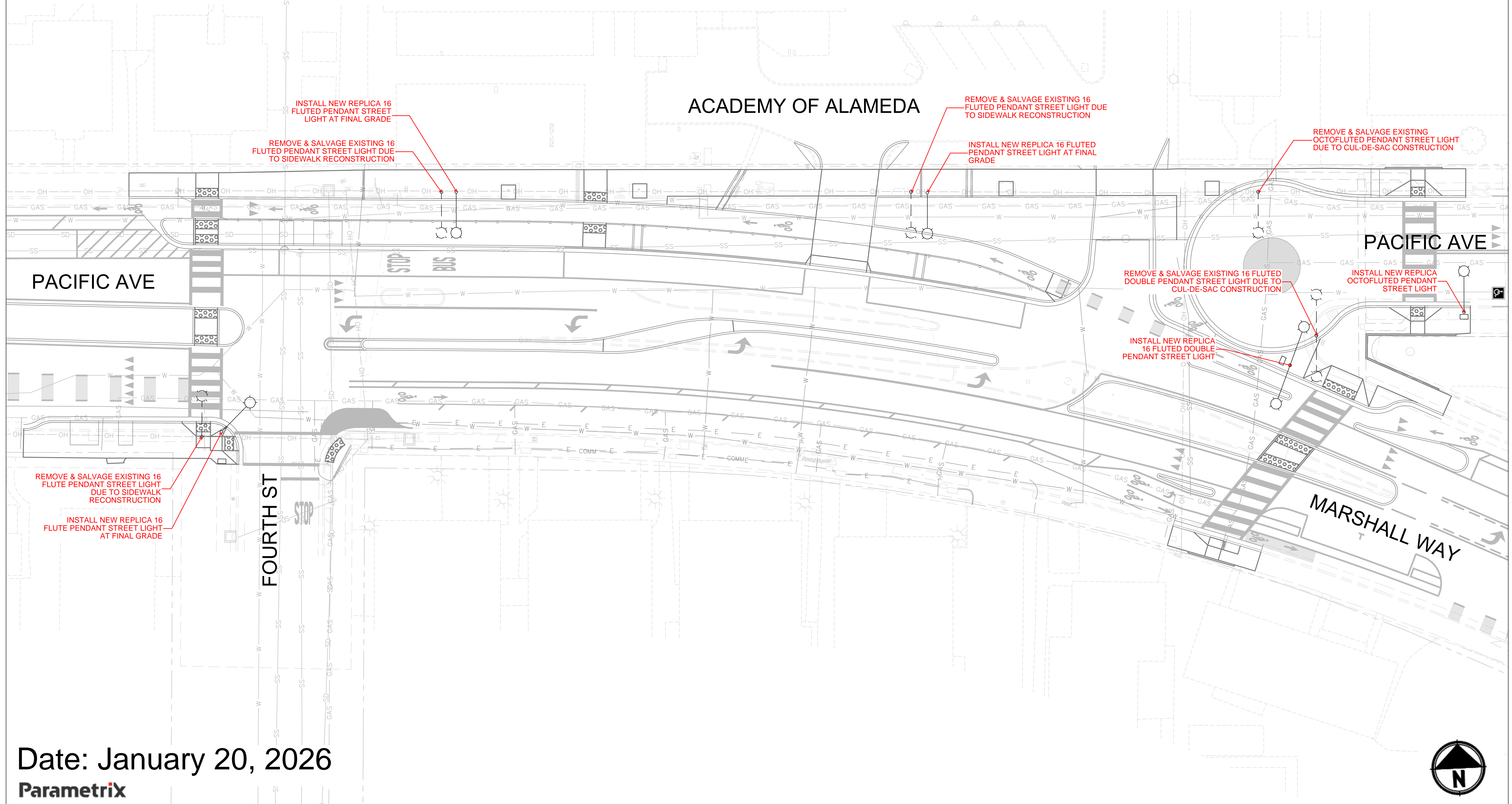
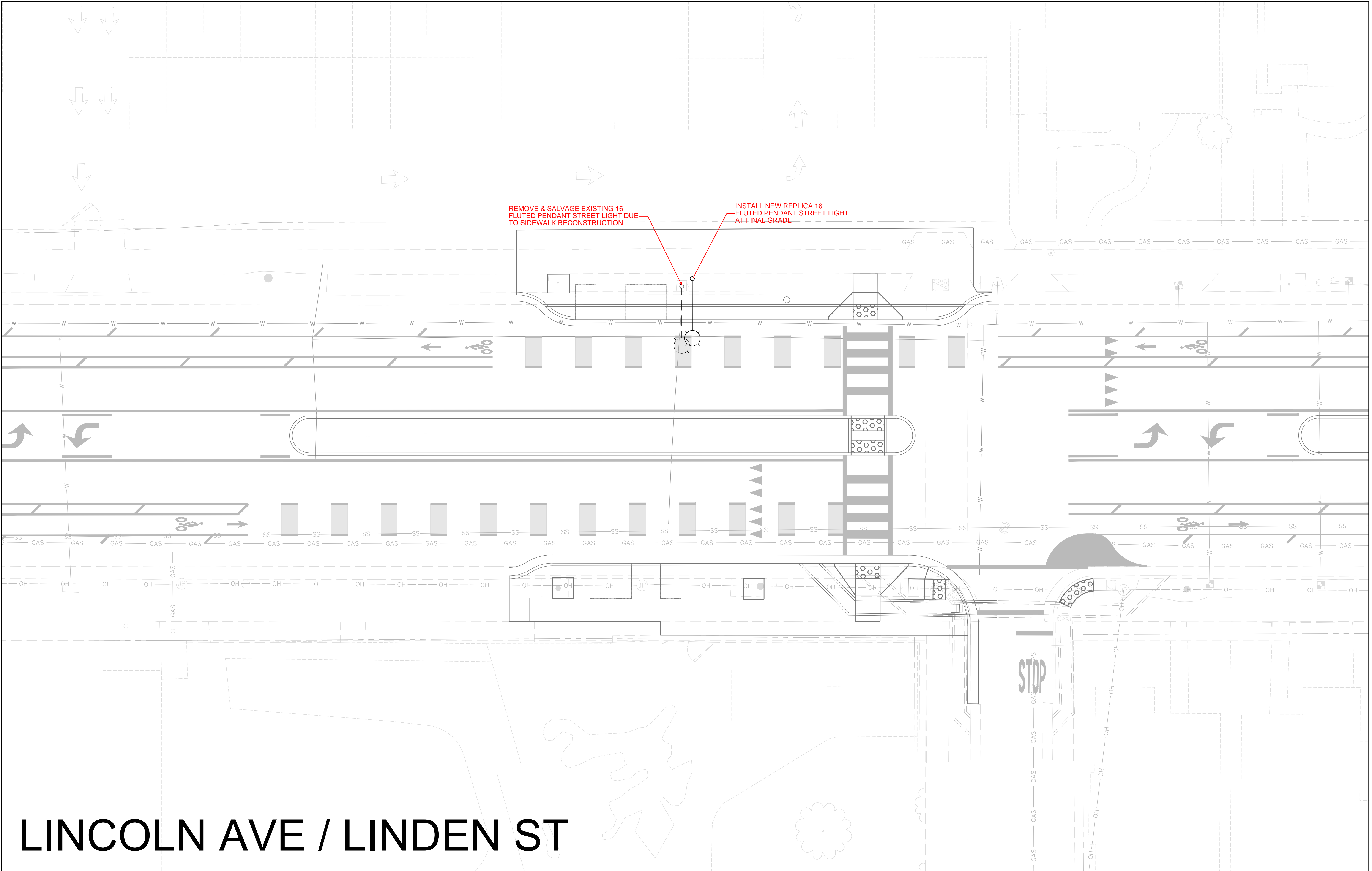


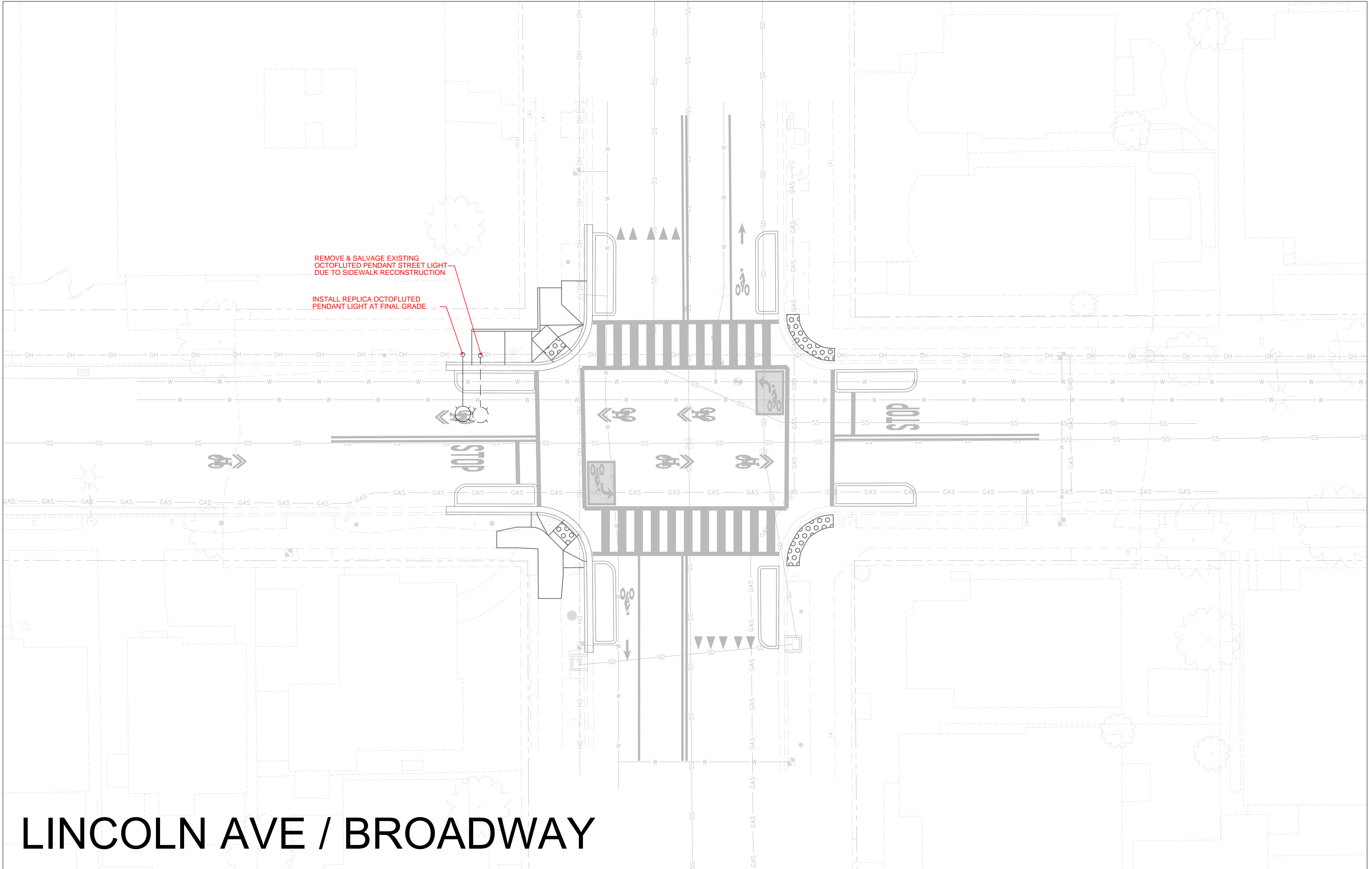
Exhibit 5 Item 4B  
Historical Advisory Board Meeting  
February 5, 2026





# LINCOLN AVE / LINDEN ST

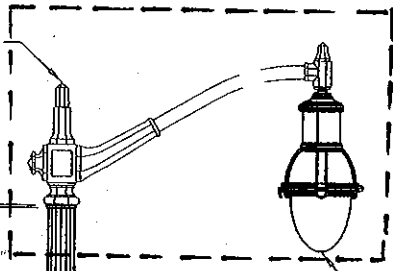




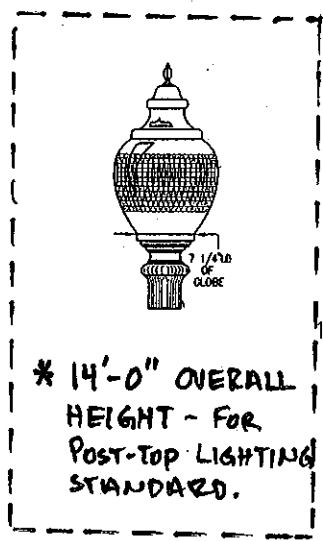
LINCOLN AVE / BROADWAY

Handwritten of this document are considered uncontrolled and are to be used for reference only. Those using this document for reference must take all precautions available to ensure that this document matches the current revision assigned in digital format, within a single source and protected by digital restrictions.

EXISTING ARM  
BOLTED TO  
TOP PLATE



LUMEC RNS-LED  
LUMINAIRE



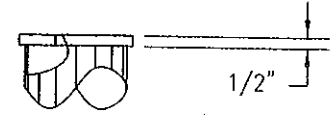
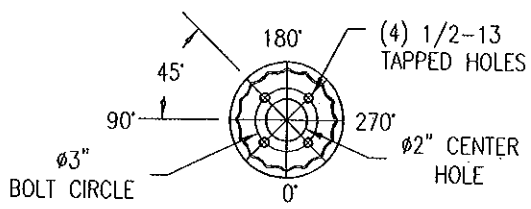
19'-7" OVERALL HEIGHT  
16 FLUTE TAPERED STEEL TUBE  
11GA (.1196") .14"/FT TAPER  
11F-7.64x4.93"x19'-4"

TUBE SIZE AT  
TOP OF BASE  
Ø7.21" GIRTH  
Ø7.25" ACTUAL

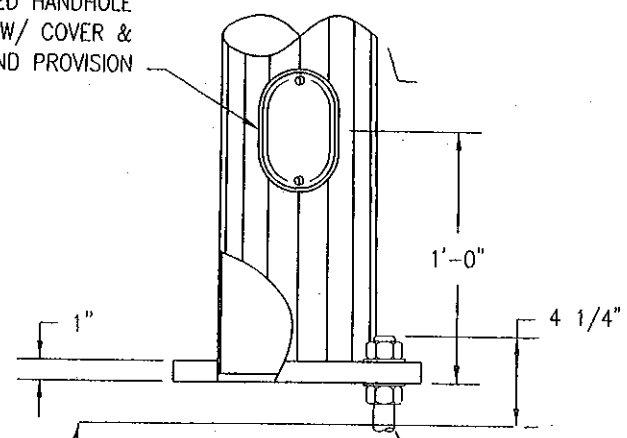
35"  
EXISTING BASE  
SLIPS OVER POLE

NOTES:

1. BASE CASTINGS TO BE PROVIDED TO CONFIRM INSIDE DIAMETERS ARE LARGE ENOUGH TO SLIP OVER POLE.
2. ARM & BASE CASTING SAMPLES TO BE PROVIDED TO DUPLICATE IF NEW CASTINGS ARE REQUIRED.
3. CUSTOMER TO CONFIRM ALL ORIENTATIONS AND DIMENSIONS.
4. ANCHOR BOLTS ASTM A307 FULL GALV BY OTHERS.
5. FINISH H.D.GALV. TO ASTM A123 & POWDER COATED RAL6005.



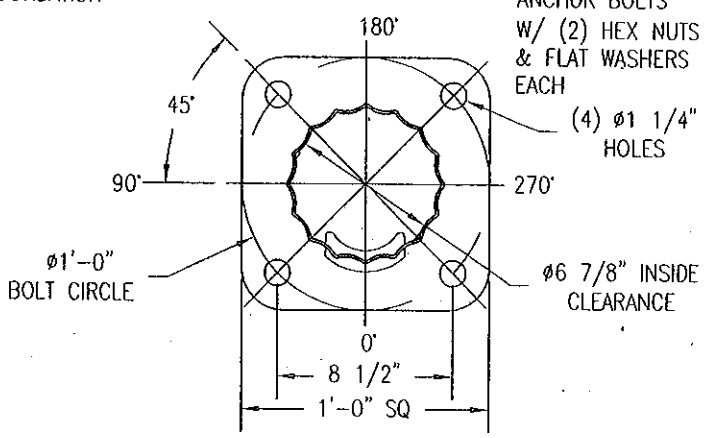
3x5 CURVED HANDHOLE  
FRAME W/ COVER &  
1/2" GROUND PROVISION



TOP OF FOUNDATION

(4) Ø1"x36"x4"  
ANCHOR BOLTS  
W/ (2) HEX NUTS  
& FLAT WASHERS  
EACH


(4) Ø1 1/4"  
HOLES



STATE: CALIFORNIA	REQ / SO# : NCA45016	REV	DESCRIPTION	DATE	REV BY/CHK BY
-------------------	----------------------	-----	-------------	------	---------------

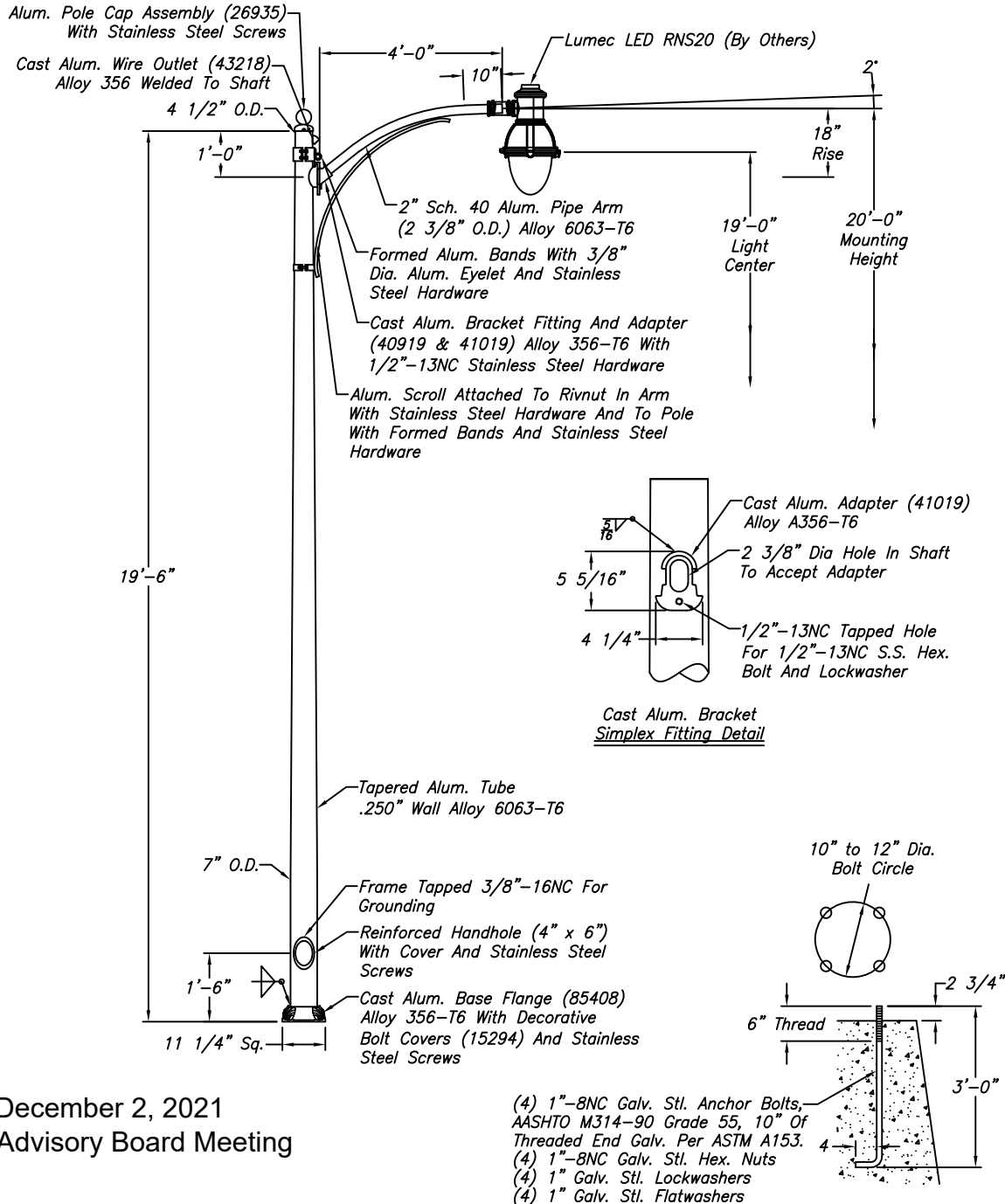
PROJECT NAME: ALAMEDA MUNICIPAL POWER, CITY OF ALAMEDA	REVISIONS
--	-----------

REPLACEMENT POLES TO REFURBISH EXISTING LIGHTING STANDARDS  
DESIGN NUMBER B99-A573-Y1

 Union Metal Corporation	This document and the contents herein are proprietary and the property of Union Metal Corporation. This document is not to be copied, reproduced, or used for any reason except for the purposes which it was issued without the express written consent of Union Metal Corporation. Furthermore Union Metal Corporation reserves the right to recall this document and all copies at any time for any reason.	DESIGNED BY MB	CHECKED BY JLR	DATE 7/12/12	SCALE	ENG REF
		N99-A573			REVISION R0	SHEET 1 of 1

**Notes:**

- 1) Pole Designed To Meet AASHTO, 2013 Edition (Excluding Breakaway)  
For A 90 mph Wind Velocity When Supporting A Luminaire With A  
Maximum Size Of 3.6 ft<sup>2</sup> E.P.A And 75 lbs.
- 2) Overhead Wiring Specifications:
  - Wt./ft.: 0.049 lbs./ft.
  - Span Length: 150' Maximum
  - Sag: 2.253'
- 3) The Pole Assembly Shall Be Powder Coated With An RAL Finish Which  
Is To Be Chosen By Customer.



B104376

Exhibit 2  
Item 7-B, December 2, 2021  
Historical Advisory Board Meeting

Ref: 26829, 33862, & 28694

**WARNING: DO NOT INSTALL LIGHTING POLES WITHOUT LUMINAIRES**

NO.	REVISIONS	DATE
1	Shaft Height Was 20' (tnb)	4/20
2	Added Bolt Covers And Wire Hook & Outlet (tnb)	10/20

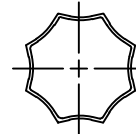
**hapco**

Abingdon, Va.

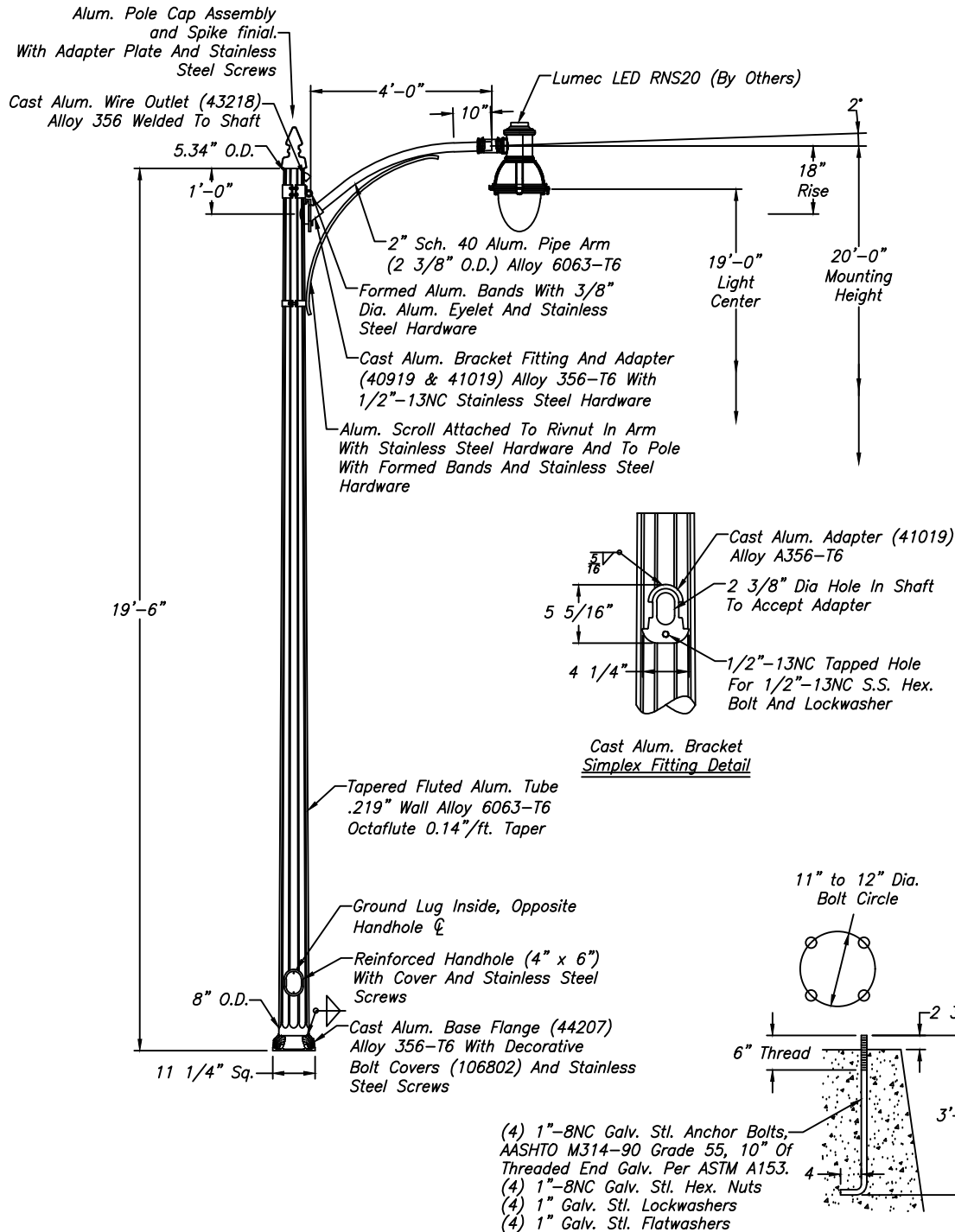
TITLE 20' MH LIGHTING POLE	
CUSTOMER City of Alameda	
SCALE 24	DATE 04/01/2020
BY TNB	DWG. NO.
CHK'D	B104376

**Notes:**

- 1) Pole Designed To Meet AASHTO, 2013 Edition (Excluding Breakaway)  
For A 90 mph Wind Velocity When Supporting A Luminaire With A  
Maximum Size Of 3.6 ft<sup>2</sup> E.P.A And 75 lbs.
- 2) Overhead Wiring Specifications:
  - Wt./ft.: 0.049 lbs./ft.
  - Span Length: 150' Maximum
  - Sag: 2.253'
- 3) The Pole Assembly Shall Be Powder Coated With An RAL Finish Which  
Is To Be Chosen By Customer.



Cross Section  
Of Flutes



Ref: 104376 & 26762

WARNING: DO NOT INSTALL LIGHTING POLES WITHOUT LUMINAIRES

NO.	REVISIONS	DATE

**hapco**

Abingdon, Va.

TITLE 20' MH LIGHTING POLE

CUSTOMER City of Alameda

SCALE 24 DATE 07/20/2021

BY TNB DWG. NO.

CHK'D B106937

B106937