



Alameda Point - Site A - DESIGN REVIEW • Waterfront Park • PHASE I

JANUARY 7, 2016 HISTORIC ADVISORY BOARD - JANUARY 11, 2016 PLANNING BOARD - JANUARY 14, 2016 RECREATION AND PARKS

TABLE OF CONTENTS

GENERAL DRAWINGS

L - 1	Cover Sheet - Table of Contents, Site Context Map, List of Consultants/contact info
L - 2	Site A Development Plan - Waterfront Park
L - 3	Waterfront Park - Existing Conditions
L - 4	Phase I Design Review - Waterfront Park
L - 5	Sea Level Rise Defense Plan
L - 6	Waterfront Park Site Sections
L - 7	Site A - Open Space Programming
L - 8	Site A - Family Play Programming Ideas

WATERFRONT PARK - PHASE I

LW - 1	Waterfront Park Phase I Site Plan
LW - 2	Circulation - Bike and Vehicular
LW - 3	Circulation - Pedestrian and ADA Access
LW - 4	Waterfront Park - The Overlook
LW - 5	The Overlook - Perspective
LW - 6	The Overlook - Plan
LW - 7	The Overlook - Section A
LW - 8	Pavilion @ The Overlook (by BCV Architects)
LW - 9	Waterfront Park - The Promenade and Terraces
LW - 10	The Promenade - Perspective
LW - 11	The Promenade and Terraces - Plan

LW - 12	The Promenade and Terraces - Section B
LW - 13	The Promenade and Terraces - Section C
LW - 14	Waterfront Park - The Taxiway
LW - 15	The Taxiway - Perspective
LW - 16	The Taxiway - Plan
LW - 17	The Taxiway - Historic Timeline
LW - 18	The Taxiway - Section B
LW - 19	The Taxiway - Section C
LW - 20	Park Programming
LW - 21	Sustainable Features
LW - 22	Universal Design
LW - 23	Planting Palette: Trees
LW - 24	Planting Palette: Shrubs and Grasses
LW - 25	Conceptual Lighting Plan

STORMWATER C-3 DRAWINGS BY BKF

C - 1	Untreated Stormwater Conceptual Collection System
C - 2	Treatment Concept and Treated Stormwater Collection System

PROJECT TEAM

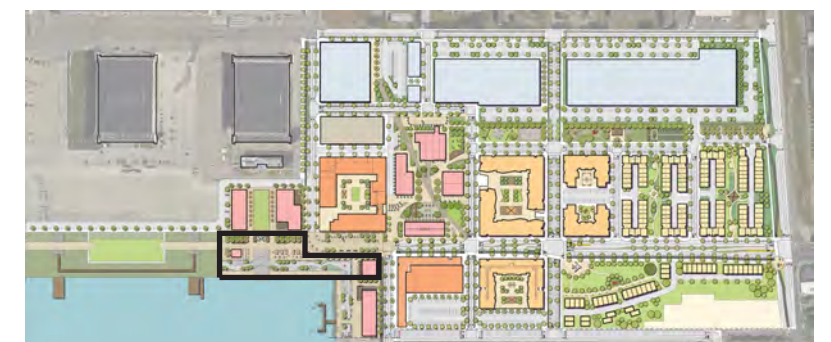
OWNER:
ALAMEDA POINT PARTNERS LLC.
2220 LIVINGSTON STREET | SUITE
208 | OAKLAND, CA 94606
T: 510-219-5376
CONTACT: JOE ERNST
EMAIL: JERNST@SRMERNST.COM

LANDSCAPE ARCHITECT:
APRIL PHILIPS DESIGN WORKS
1530 5TH AVE, STE A,
SAN RAFAEL CA, 94901
T: 415.457.2774
CONTACT: APRIL PHILIPS
EMAIL: APHILIPS@APDW.COM

PAVILION ARCHITECT:
BALDAUF CATTON VON
ECKARTSBERG ARCHITECTS
1527 STOCKTON STREET, 4TH FLR
SAN FRANCISCO, CA 94133
T: 415.398.6538
CONTACT: Colin Alley
EMAIL: ALLEY@BCVARCH.COM

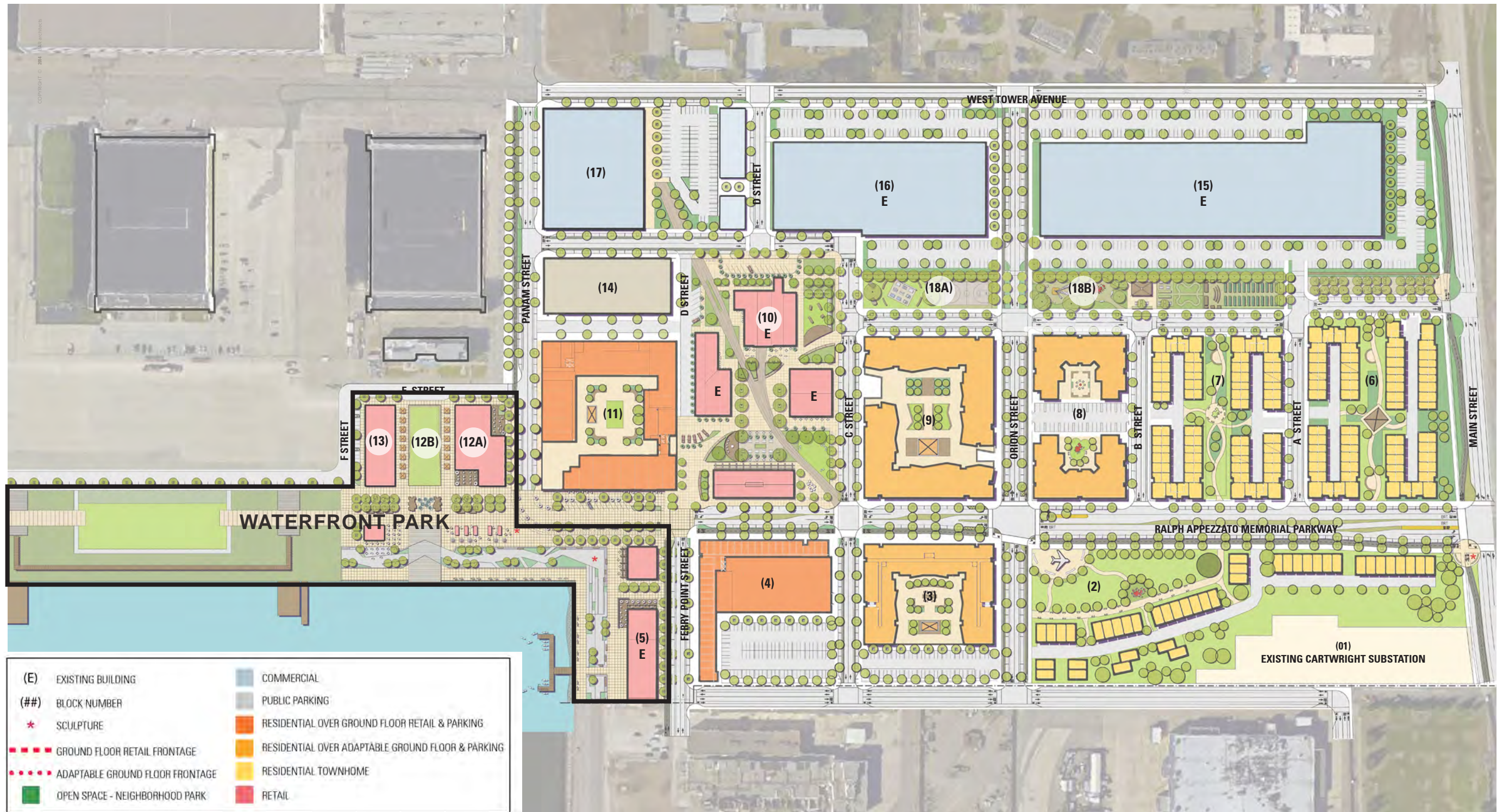
CIVIL ENGINEER:
BKF ENGINEERS
150 CALIFORNIA ST. #650
SAN FRANCISCO, CA 94111
T: (415) 930-7900
CONTACT: DANIEL SCHAEFER
EMAIL: DSCHAEFER@BKF.COM

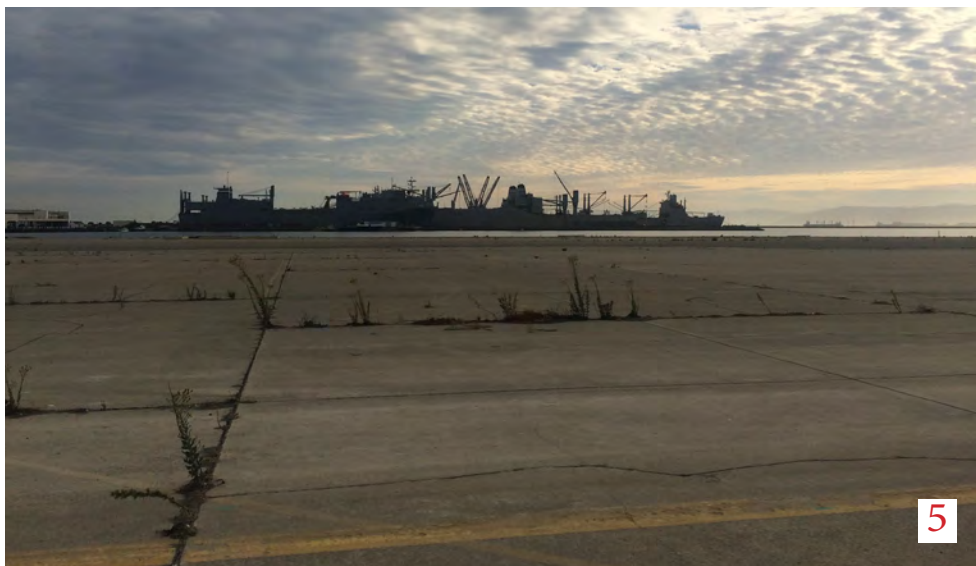
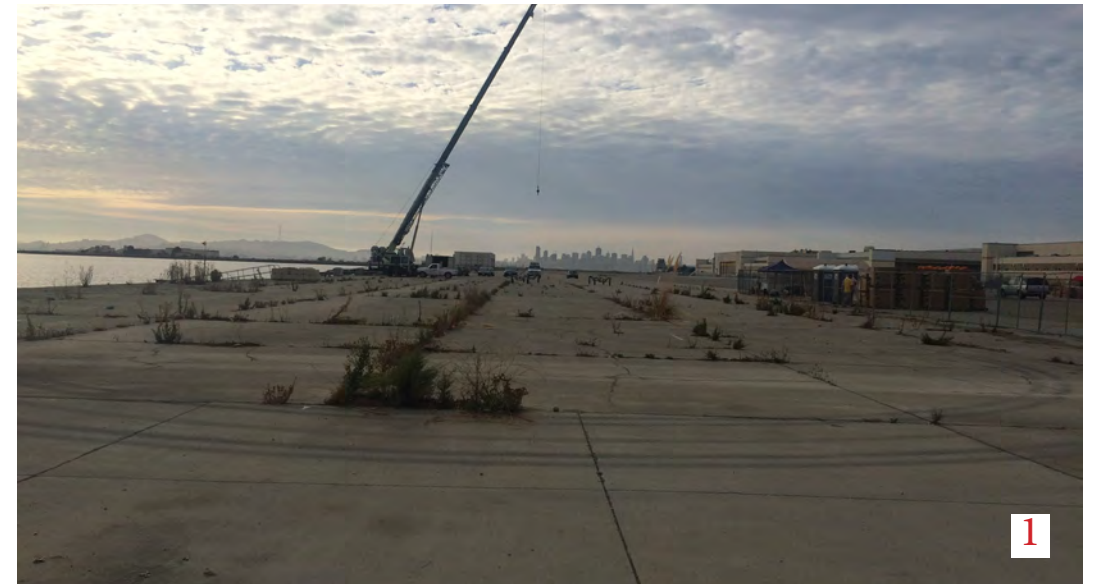
VICINITY MAP

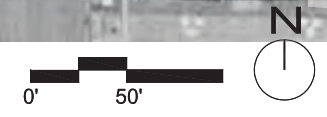
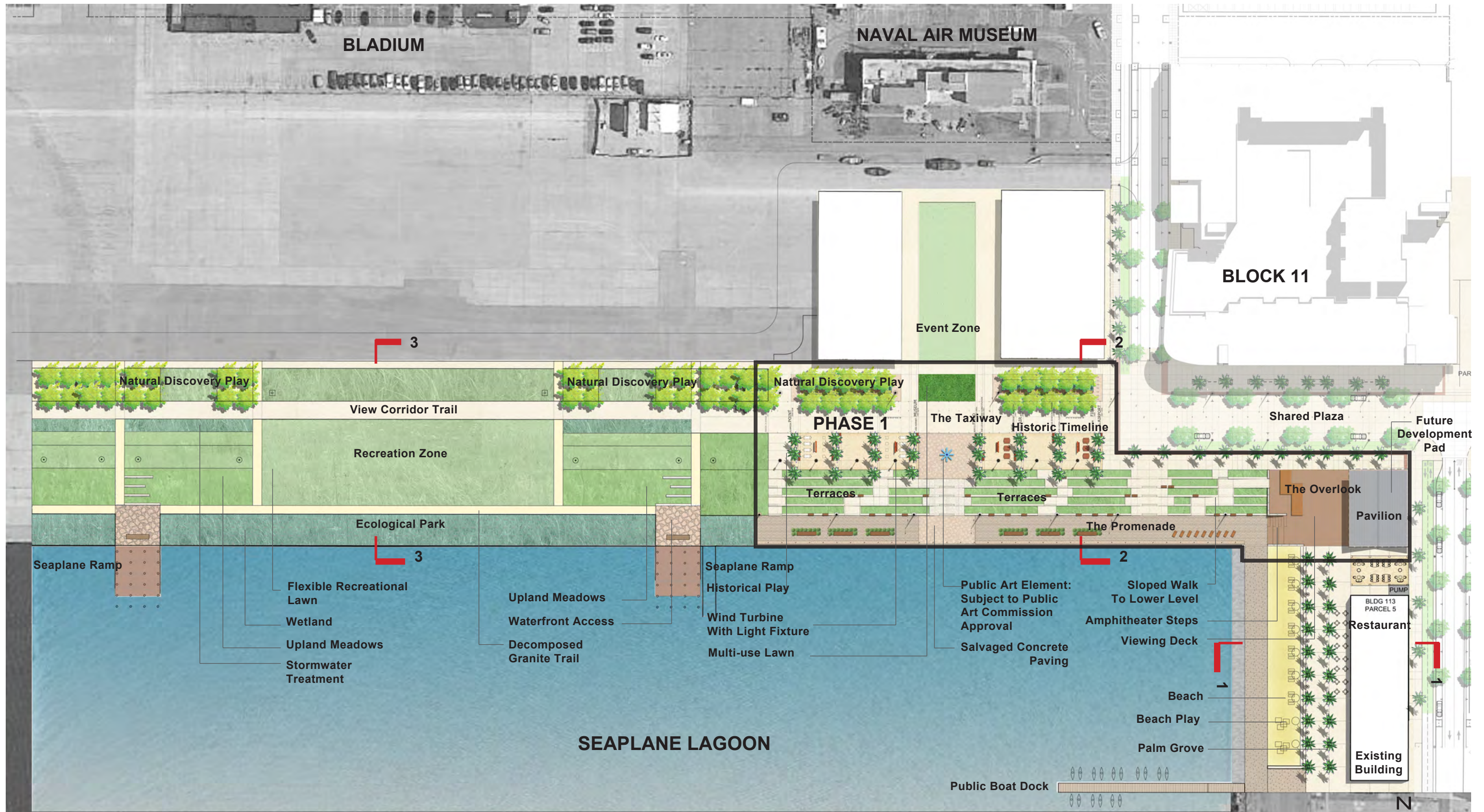


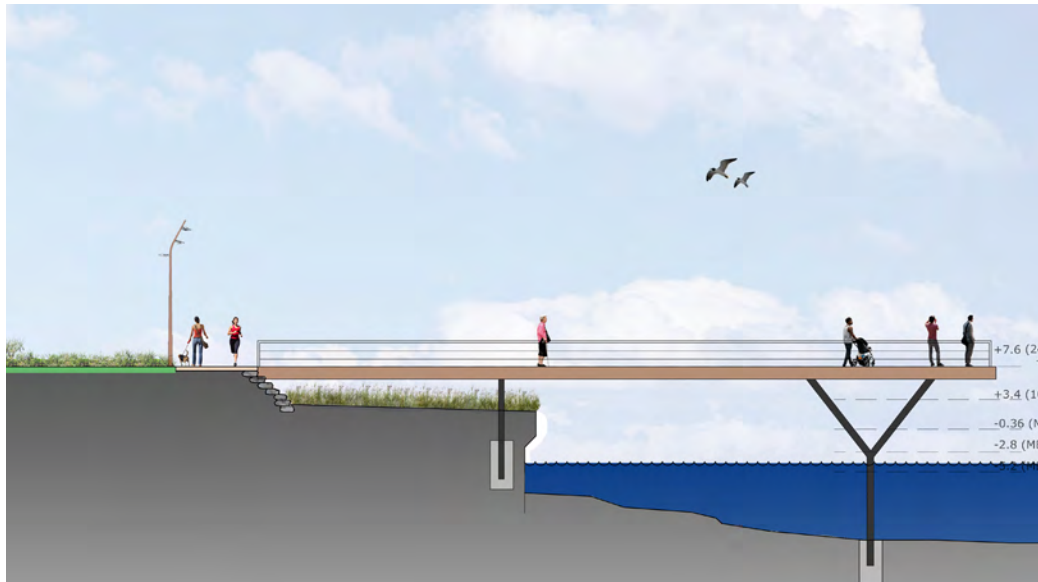
SITE AREA: 2.63 ACRES











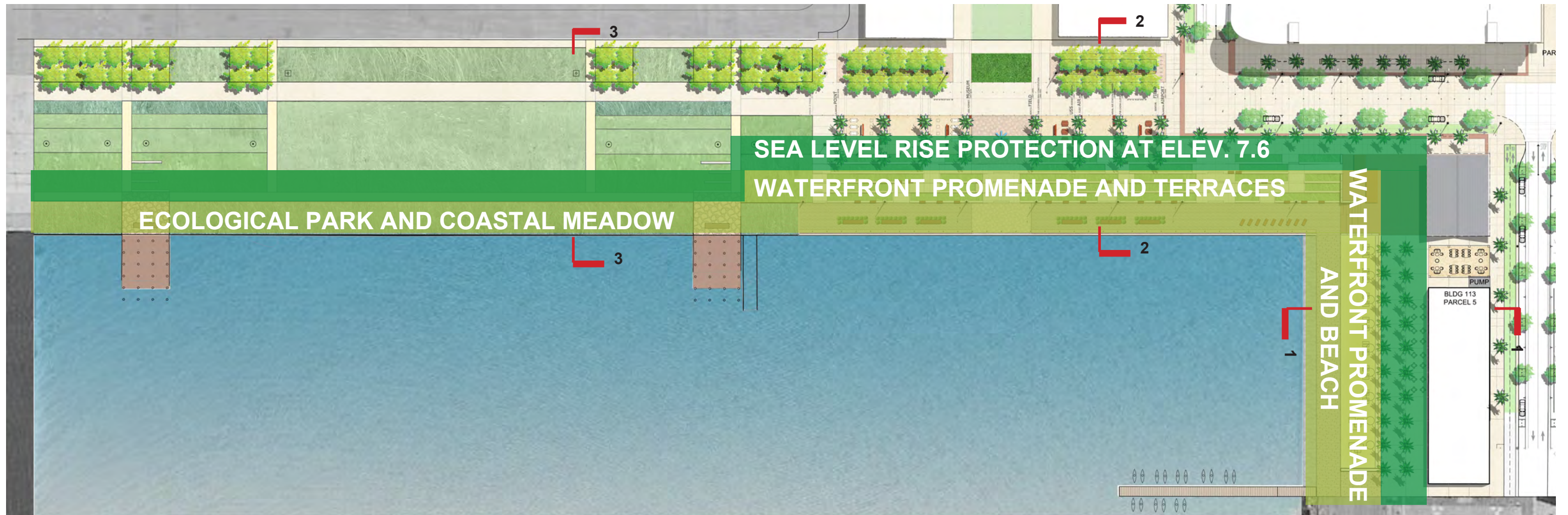
SECTION 3



SECTION 2



SECTION 1





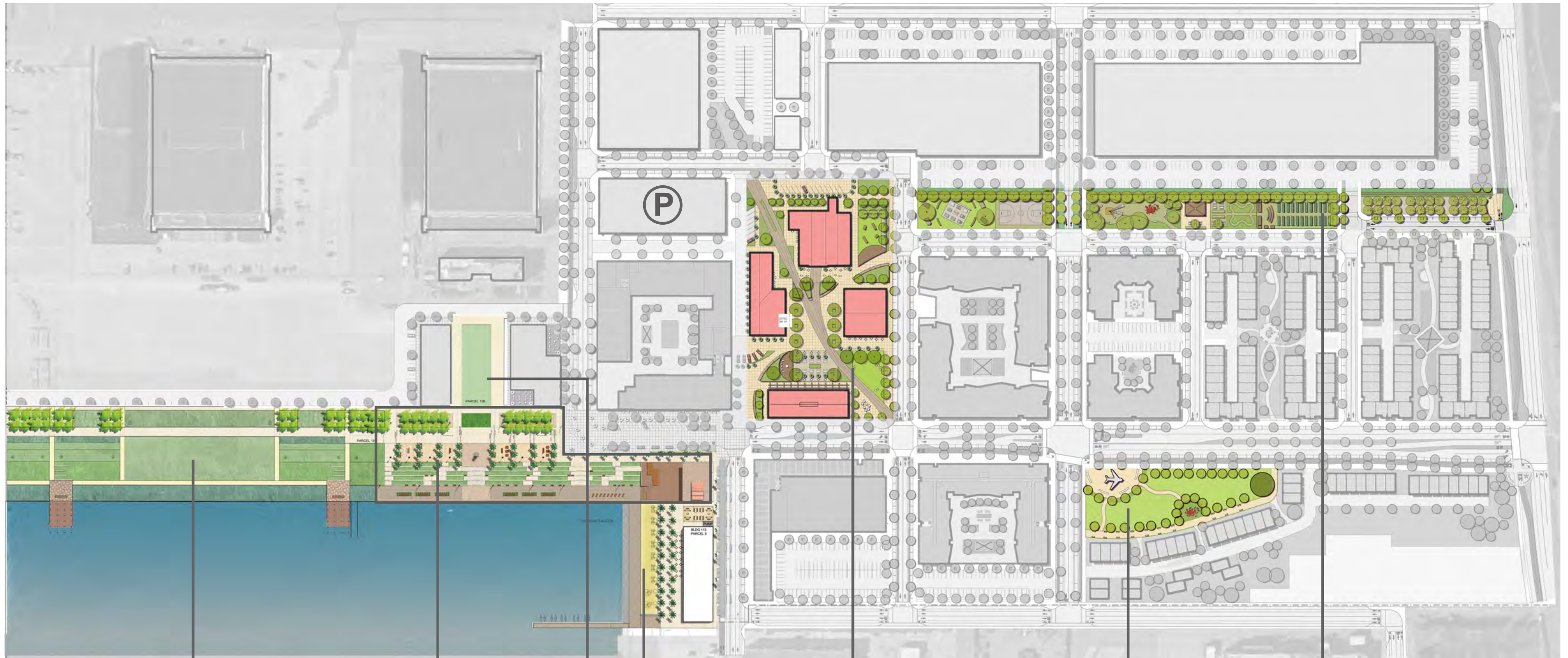
SECTION 1



SECTION 2



SECTION 3



WATERFRONT PARK PHASE 3

1. Native Ecological Area
2. Recreational Lawn
3. Areas for Volleyball, etc.
4. Natural Discovery Play
5. Access to Water
6. Trails and Pathways
7. Historic Seaplane Ramps

WATERFRONT PARK PHASE 1

1. Waterfront Promenade
2. Overlook and Deck
3. Waterfront Cafe
4. Public Restrooms
5. View Terraces
6. Flexible Event Space
7. Multi-Purpose Lawn
8. Natural Discovery + Historical Play
9. Timeline and History Elements
10. Picnic and Hammock Area
11. Public Art

WATERFRONT PARK PHASE 2

1. Waterfront Promenade
2. Sunset Deck
3. Restaurant
4. Beach Terrace
5. Beach Play
6. Public Small Craft Boat Dock
7. Sloped Event Lawn
8. Potential Market Area

URBAN PARK PHASE 1

1. Plazas and Event Space
2. Natural Discovery + Historical Play
3. Cafe and Outdoor Dining Areas
4. Restroom
5. Varied Seating Areas
6. Public Art
7. Historic Rail Tracks in Paving
8. Retrofitted Existing Buildings
9. Retail/Maker Focus

COMMUNITY PARK PHASE 3

1. Plaza with Historic Plane
2. Community Event Lawn
3. Historical Play
4. Sitting and Strolling Gardens
5. Flexible Open

NEIGHBORHOOD PARK PHASE 1, 2, & 3

1. Cross Training Fitness Station
2. Trails and Pathways
3. Variety of Site Furnishings
4. Recreation Courts for Sports
5. Active and Passive Open Space
6. Structured Play + Discovery Play
7. BBQ Shelter and Picnic Area
8. Community Garden
9. Sitting & Strolling Gardens
10. Game Tables and Ping Pong

Natural Discovery Play

AT: WATERFRONT PARK PHASE I & 3, URBAN PARK, NEIGHBORHOOD PARK

ranges from natural features that can be enjoyed in play to features using natural materials for interaction



Historical Play

AT: WATERFRONT PARK PHASE I & URBAN PARK

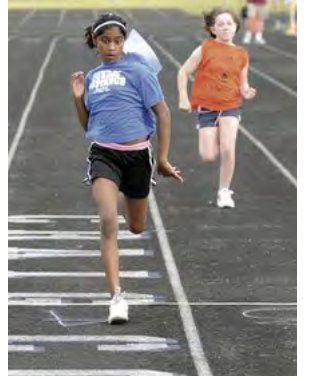
ranges from interacting with Naval Air Station historical facts



Beach Play

AT: WATERFRONT PARK PHASE 2

ranges from sand play and features in sand to play with

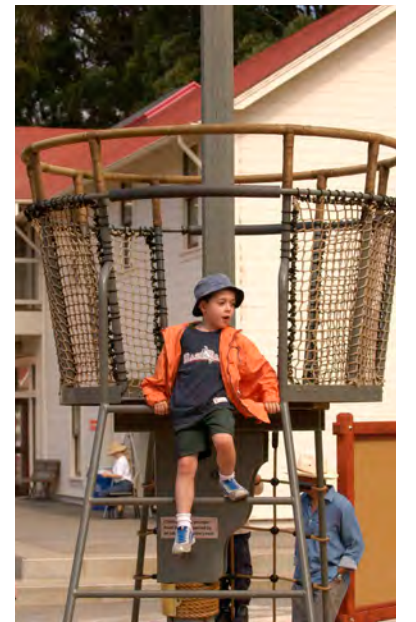


and elements and includes features such as hammocks and creative chalk zones

Structured Play

AT: NEIGHBORHOOD PARK

ranges from fitness to play ground structures for various age groups with an emphasis on family fitness

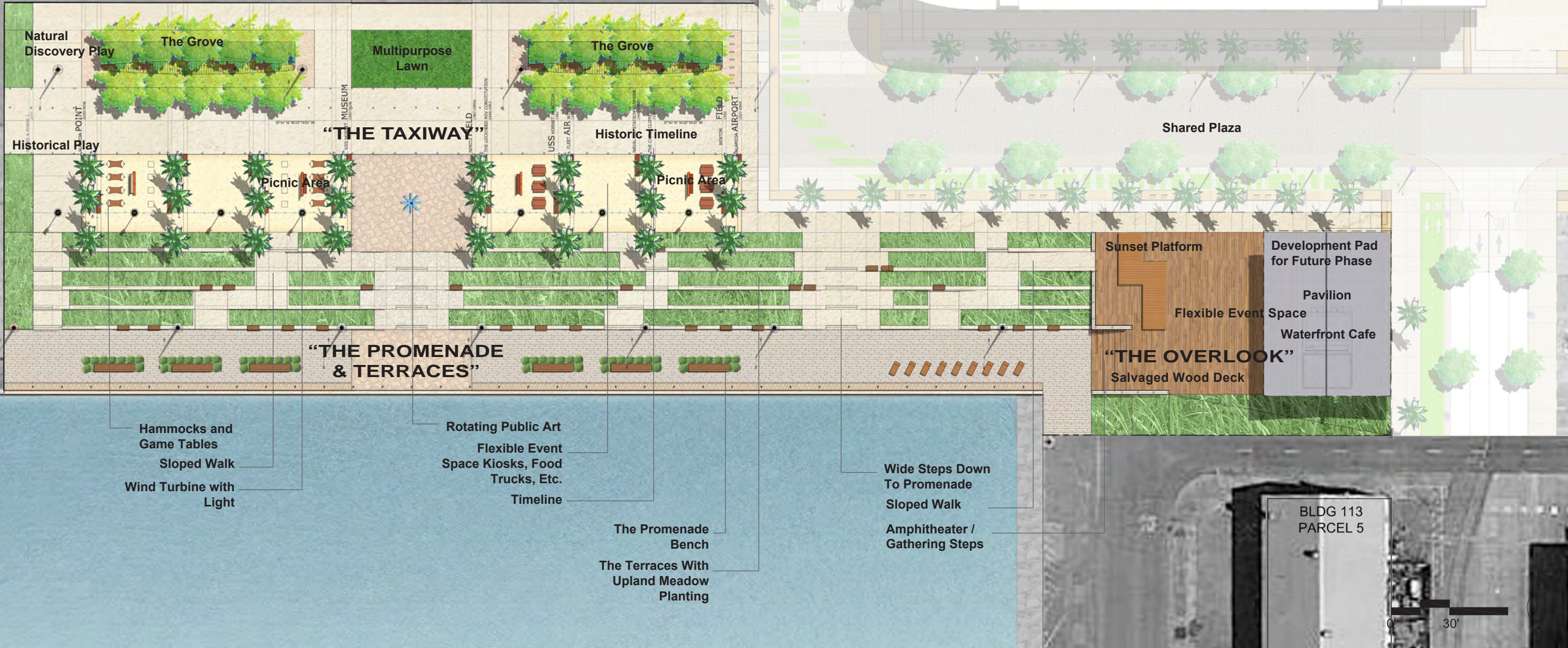


**WATERFRONT PARK
PHASE 1 PROGRAMING**

1. Waterfront Promenade
2. Overlook and Deck
3. Waterfront Cafe
4. Public Restrooms
5. View Terraces
6. Flexible Event Space
7. Multi-Purpose Lawn
8. Natural Discovery + Historical Play
9. Timeline and History Elements
10. Picnic and Hammock Area
11. Public Art

TEMPORARY **P**

BLOCK 11



Hammocks and Game Tables
Sloped Walk
Wind Turbine with Light

Rotating Public Art
Flexible Event Space
Space Kiosks, Food Trucks, Etc.
Timeline

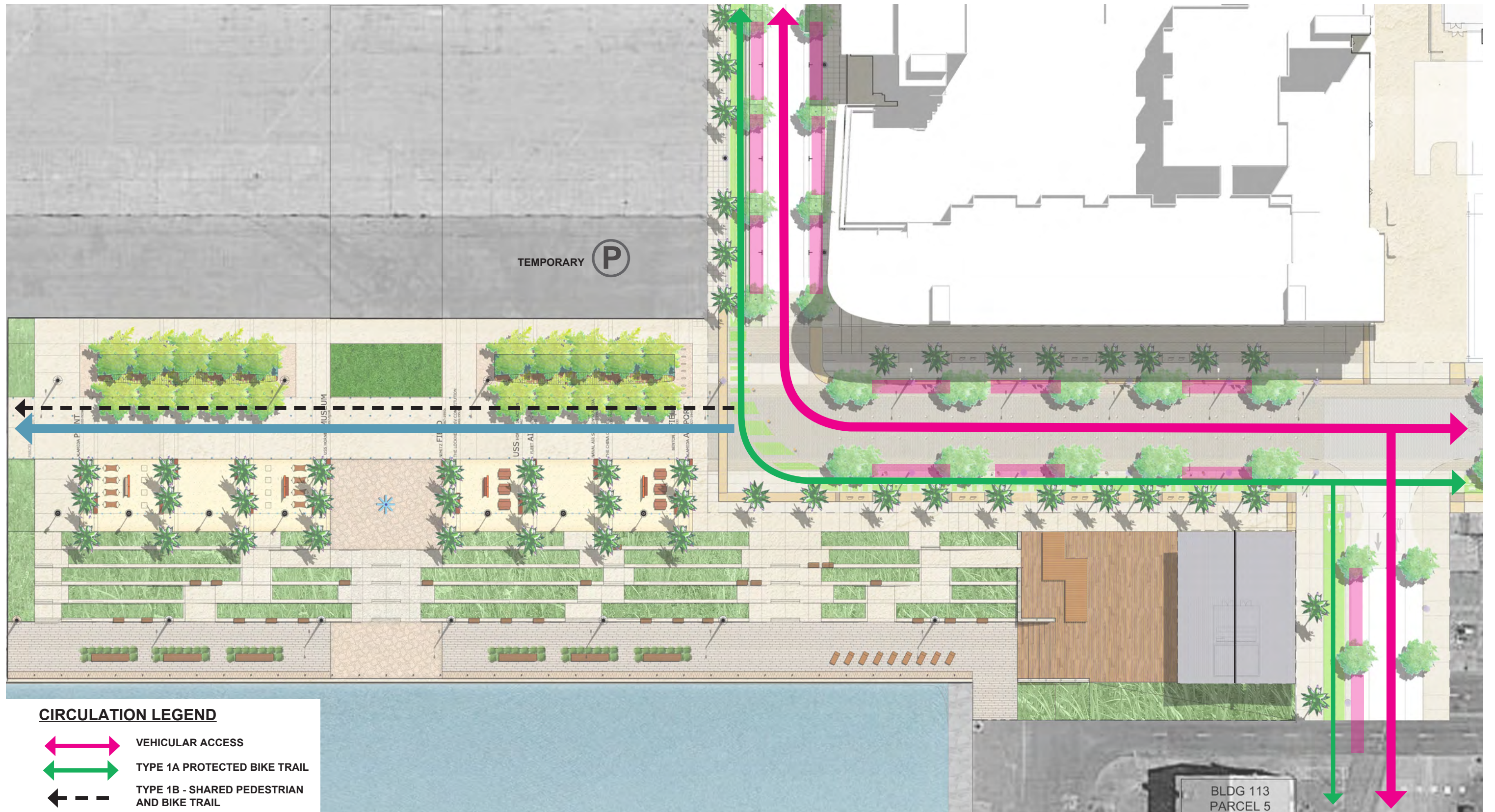
The Promenade Bench
The Terraces With Upland Meadow Planting

Wide Steps Down To Promenade
Sloped Walk
Amphitheater / Gathering Steps

Sunset Platform
Development Pad for Future Phase
Pavilion
Flexible Event Space
Waterfront Cafe
"THE OVERLOOK"
Salvaged Wood Deck

BLDG 113
PARCEL 5

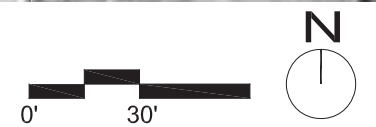
0 30'

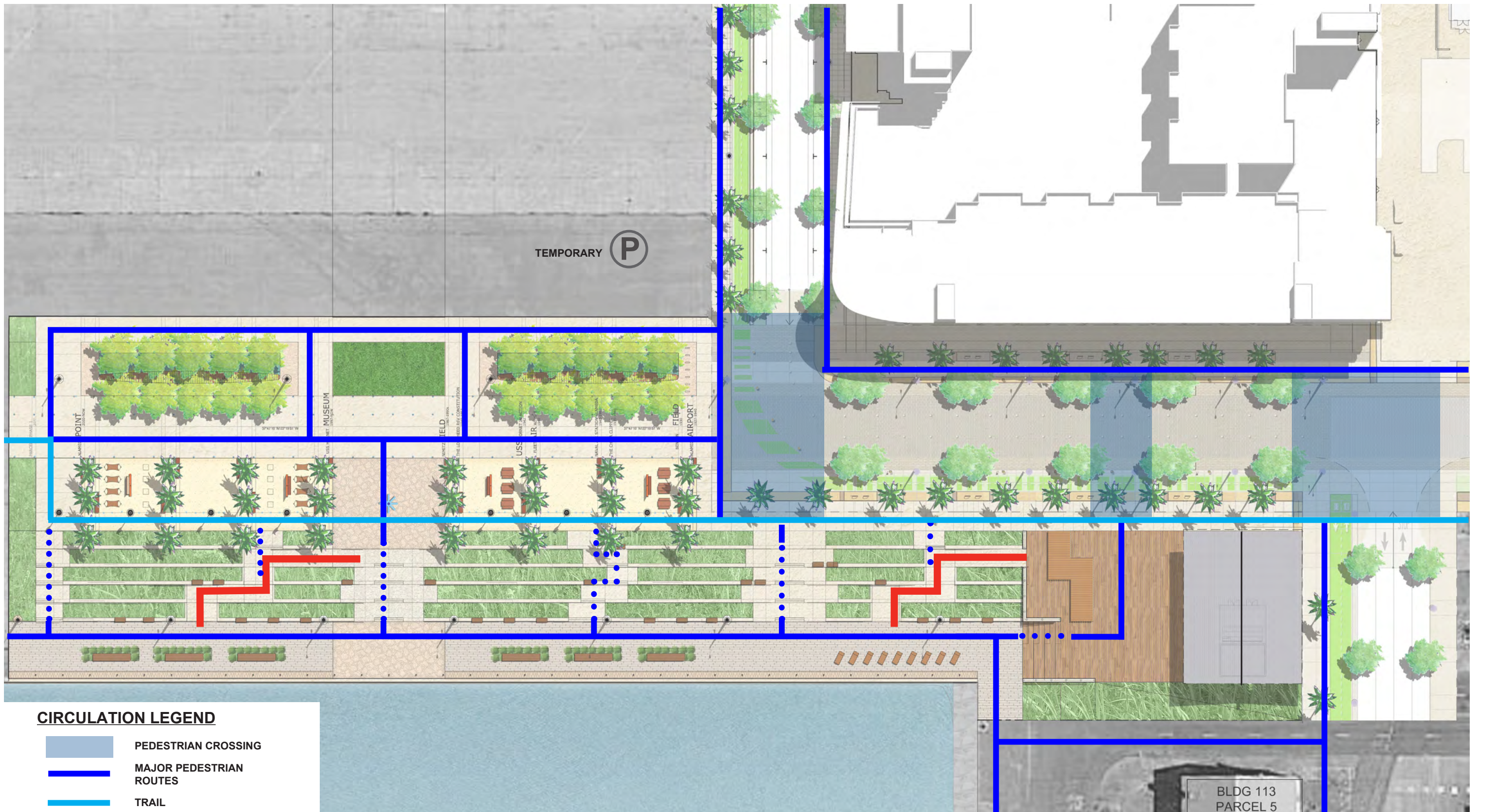


CIRCULATION LEGEND






- VEHICULAR ACCESS
- TYPE 1A PROTECTED BIKE TRAIL
- TYPE 1B - SHARED PEDESTRIAN AND BIKE TRAIL
- EVA AND EVENT ACCESS
- PARALLEL PARKING

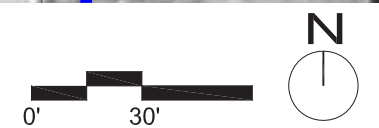
BLDG 113
PARCEL 5





CIRCULATION LEGEND

-  PEDESTRIAN CROSSING
-  MAJOR PEDESTRIAN ROUTES
-  TRAIL
-  STEPS TO THE PROMENADE
-  ADA SLOPED WALK





THE OVERLOOK





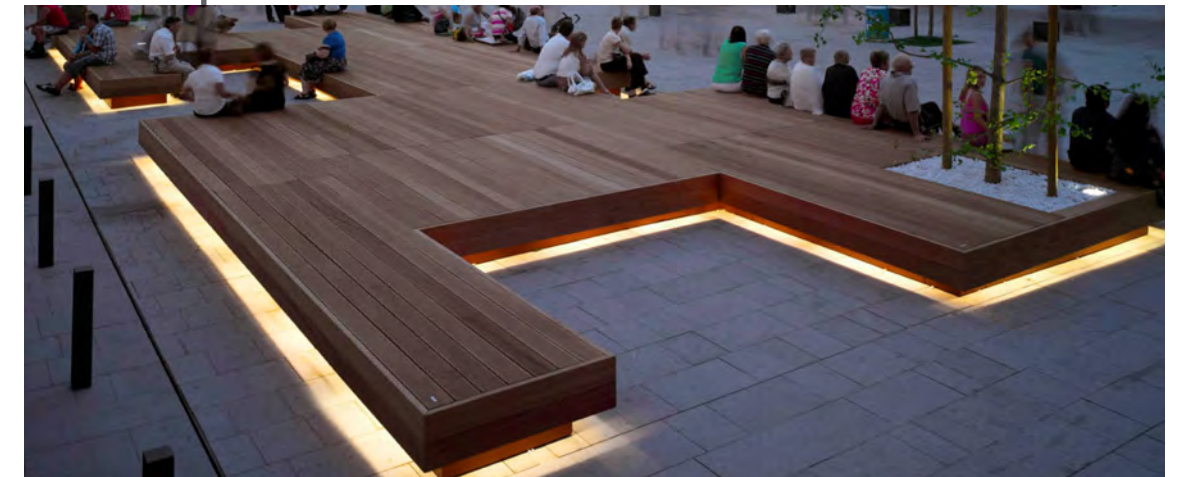
COBBLE PAVING & LIGHTED MARKER



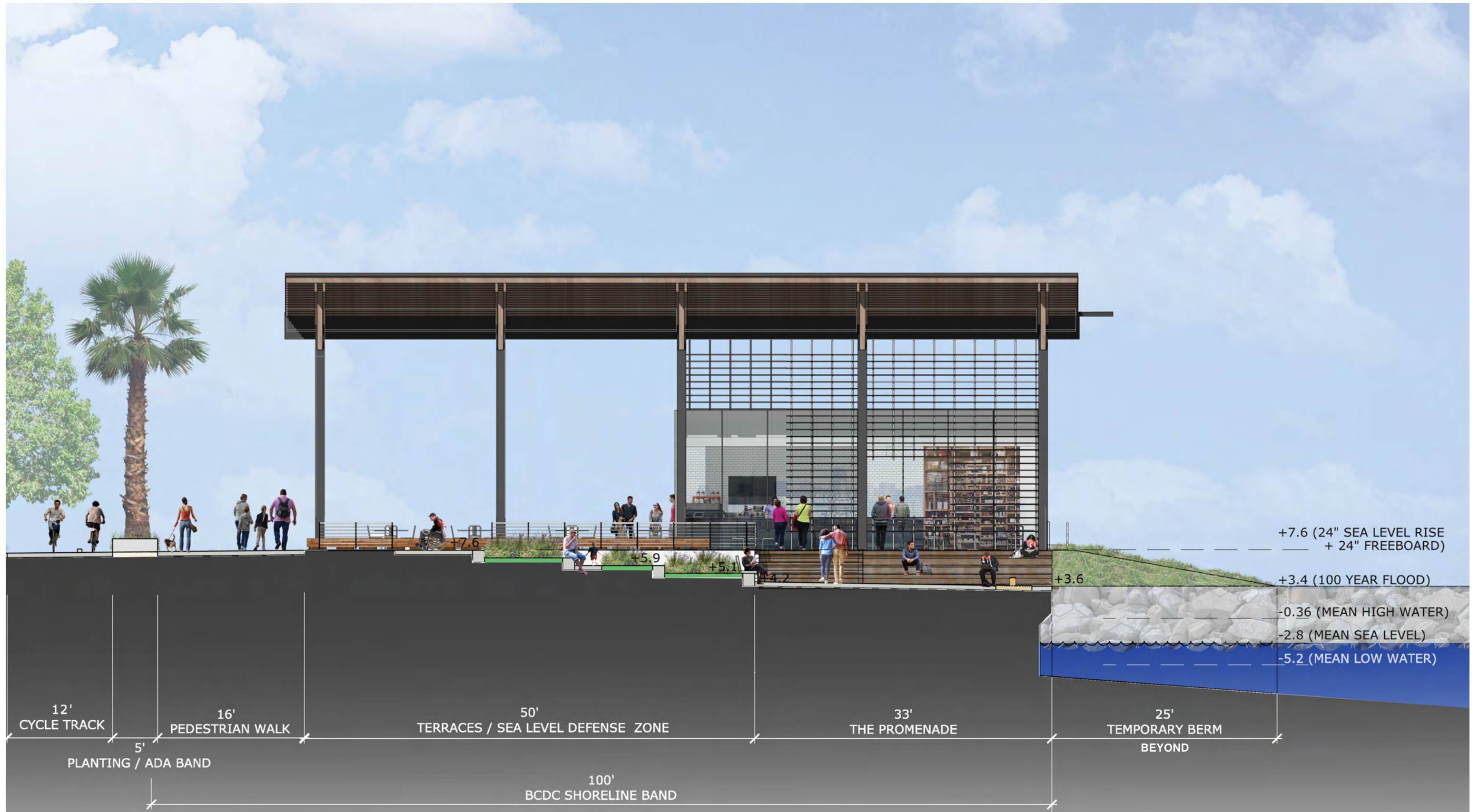
CHAISE LOUNGE CHAIR



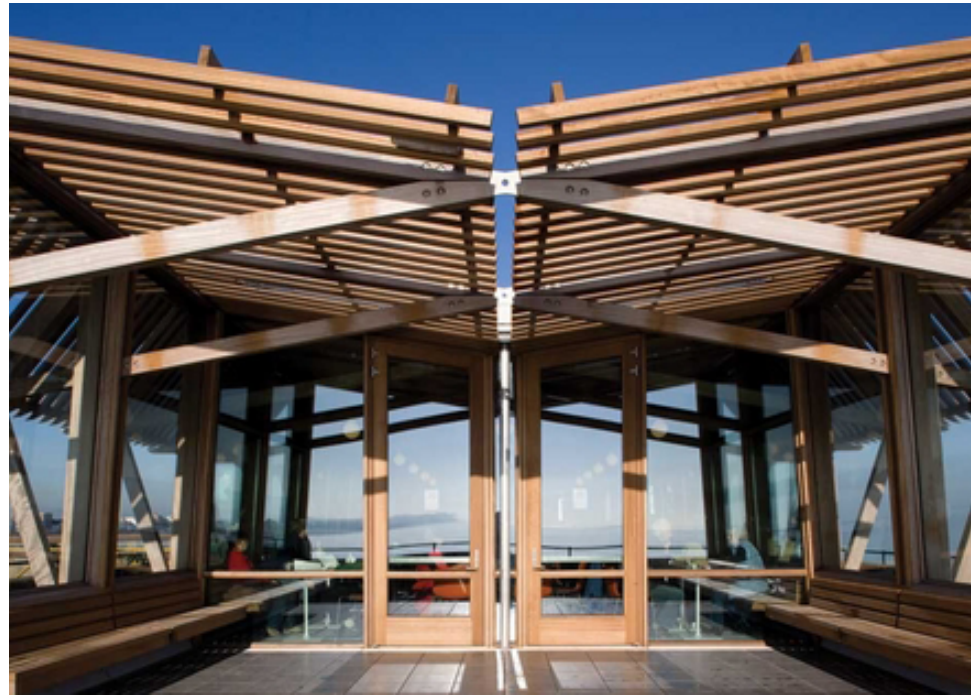
STEPS / AMPHITHEATER



FEATURED PLATFORM SEATING WITH ACCENT LIGHT



SECTION A



Pavilion



BCV

BALDAUF CATTON VON
ECKARTSBERG ARCHITECTS
1527 STOCKTON Street, 4TH
FLOOR San Francisco, CA 94133
415.398.6538 | BCVARCH.com

Alameda Point - Site A - Package I:
WATERFRONT

PAVILION AT
THE OVERLOOK

LW - 8

01.07.2016
01.11.2016
01.14.2016

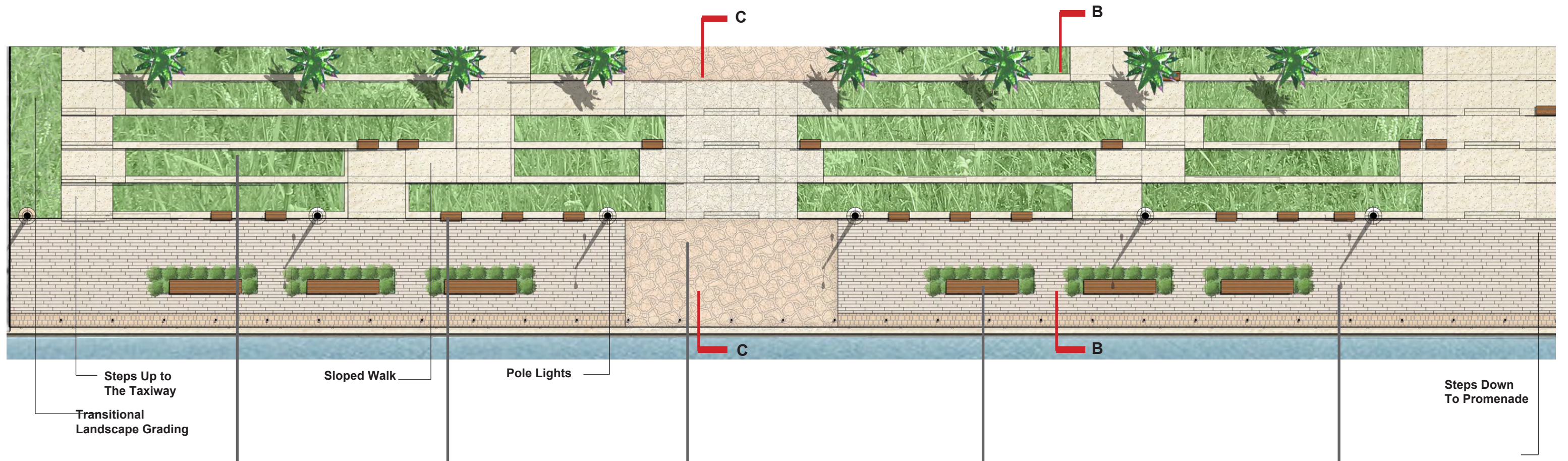
SRMERNST
MADISON MARQUETTE
THOMPSON DORFMAN PARTNERS
TRAMMELL CROW RESIDENTIAL





THE PROMENADE & TERRACES





TERRACES WITH UPLAND MEADOW PLANTING



BENCHES AT TERRACE EDGE WITH MIX OF ADA SEATING OPTIONS



SPECIALTY SEATING & SALVAGED CONCRETE PAVING



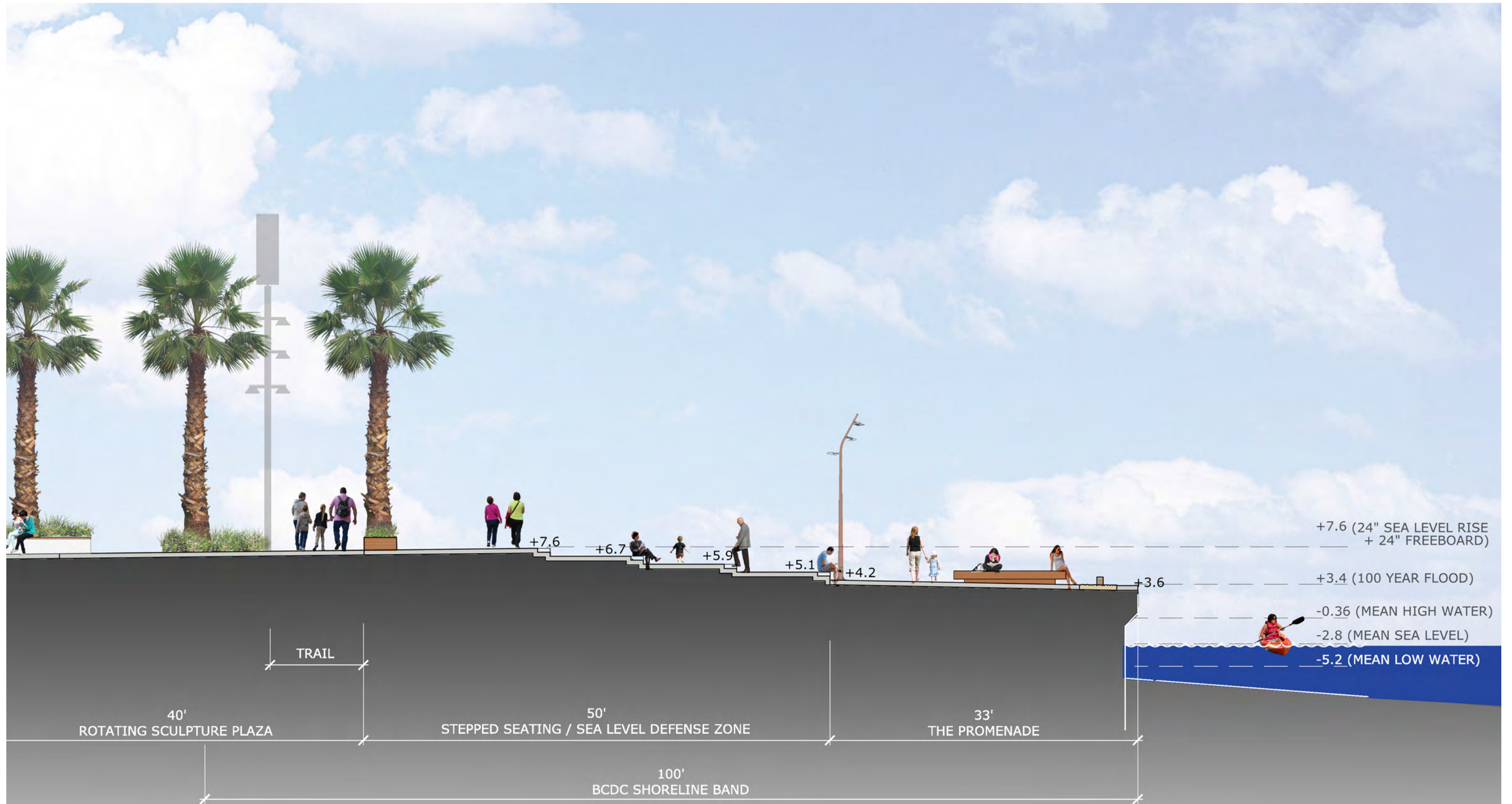
BENCHES AT PROMENADE EDGE WITH MIX OF ADA SEATING OPTIONS



LINEAR PAVERS AT PROMENADE



SECTION B

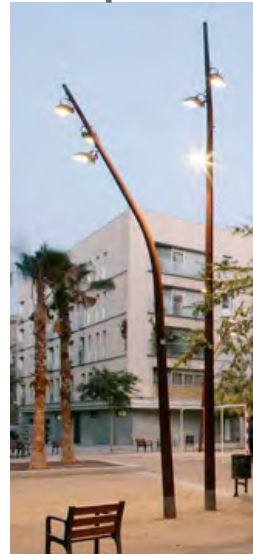
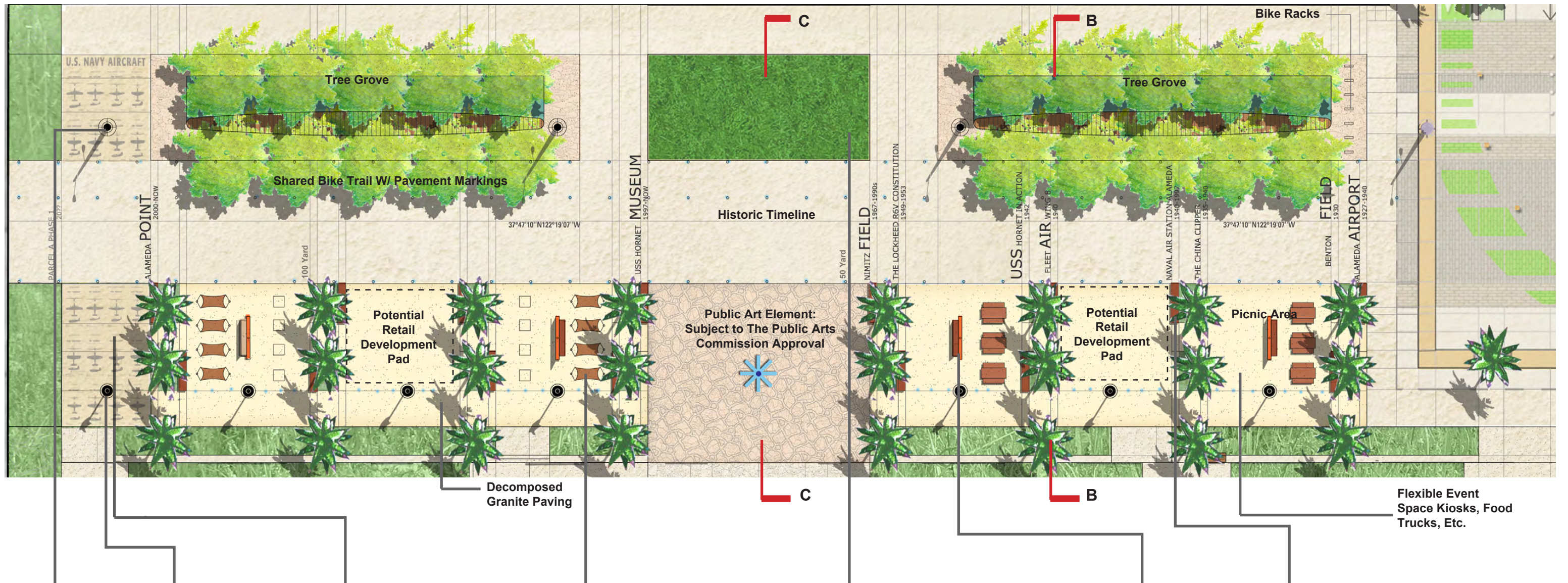


SECTION C

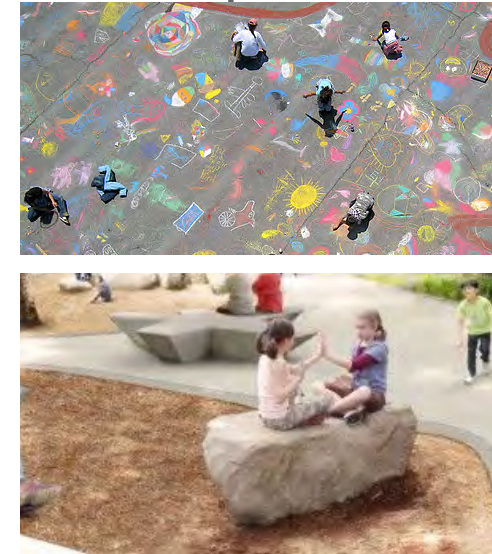


THE TAXIWAY





POLE LIGHT AND WIND TURBINE



HISTORICAL PLAY WITH CHALK AND CLIMBABLE ROCK



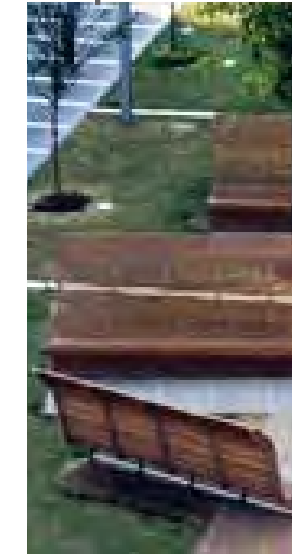
HAMMOCKS AND GAME TABLES



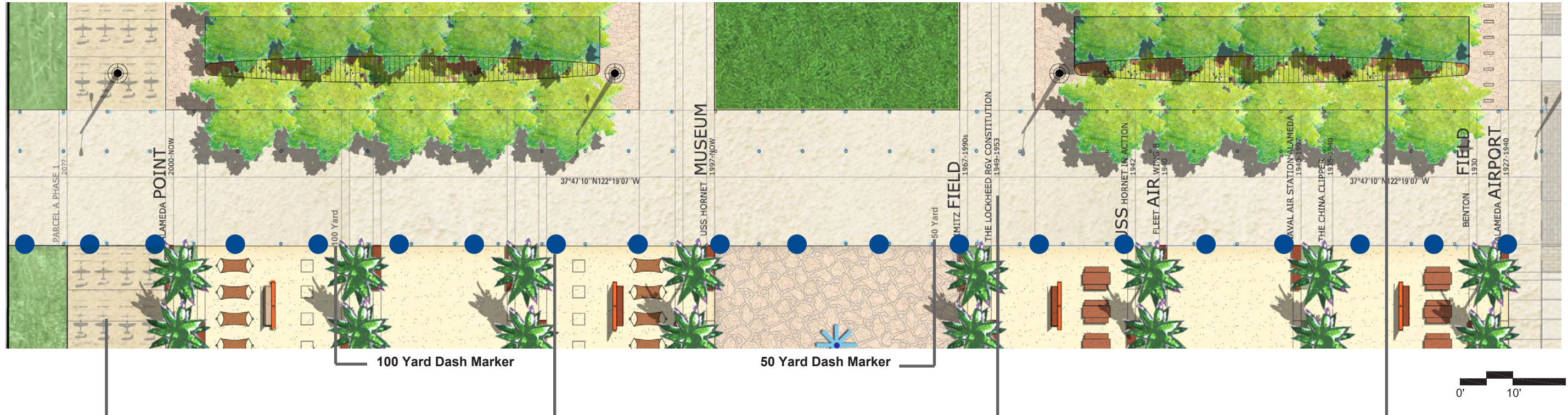
MULTIPURPOSE LAWN



PIVOT WALL WITH BENCH & GABION SEAT WALL



SITE AMENITIES



KIDS PLAY INSPIRED BY HISTORY



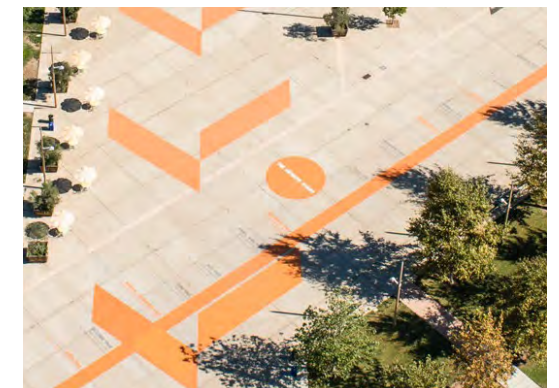
20 SQUADRONS - HISTORIC MARKERS



HISTORY TIMELINE IN PAVING



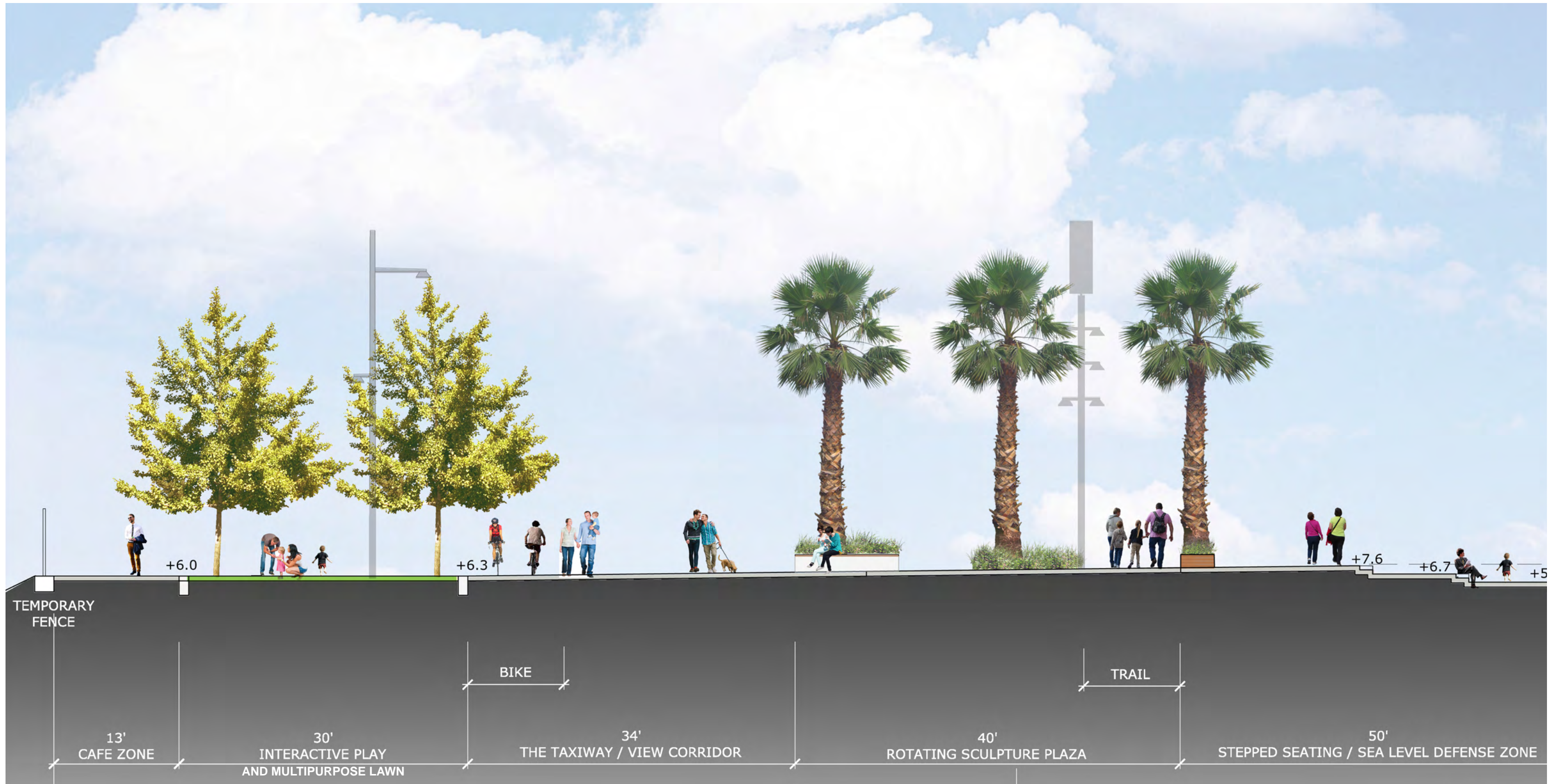
AVIATION THEMED BENCH



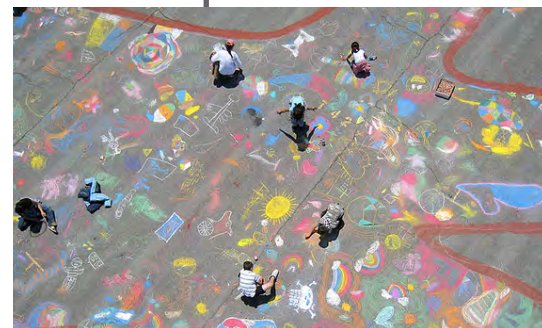
NOTE: The Waterfront Park will adhere to the Cultural Landscape Guidelines of The Naval Air Station Alameda Historic District set forth by the City of Alameda in Resolution No. 14771. The park will endeavor to retain and enhance the historic character of the property.



SECTION B



SECTION C



CHALK PLAY



MULTIPURPOSE LAWN



FOOD TRUCKS / FLEXIBLE EVENTS



YOGA & GROUP MEDITATION



ART WALK



NATURAL DISCOVERY PLAY



SAILBOAT VIEWING



OUTDOOR MOVIES



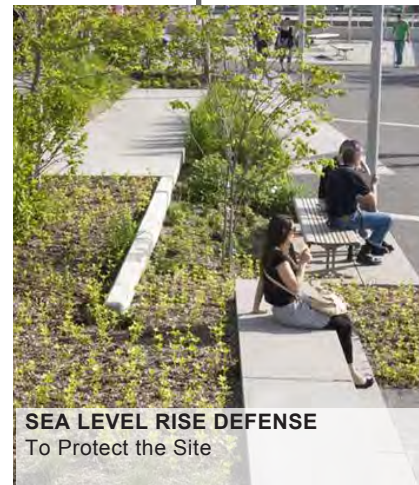
SEASONAL EVENTS



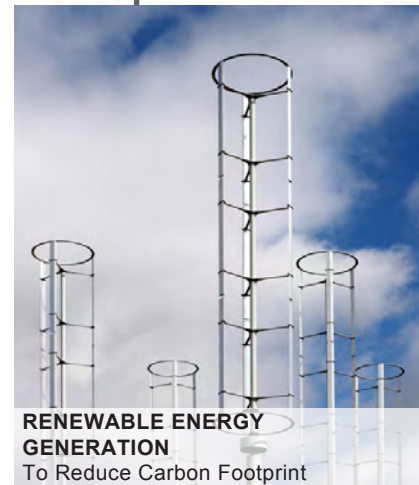
MARKET



ON SITE STORMWATER MANAGEMENT
For Clean Bay



SEA LEVEL RISE DEFENSE
To Protect the Site



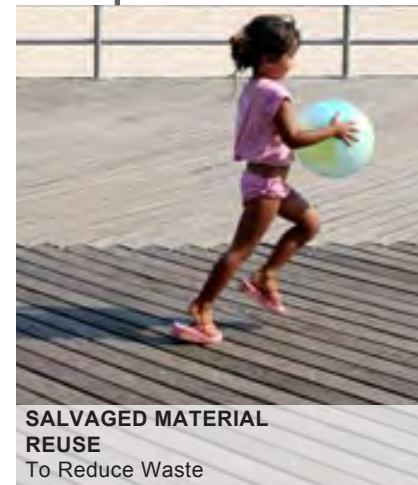
RENEWABLE ENERGY GENERATION
To Reduce Carbon Footprint



BIKE PATH AND PARKING
To Reduce Vehicle Demand



NATIVE, DROUGHT TOLERANT PLANTING
To Conserve Water Use



SALVAGED MATERIAL REUSE
To Reduce Waste



LOW FLOW TOILET FIXTURES
To Conserve Water Use

Note: The Waterfront Park design will adhere to the Site Biological Restrictions to provide the necessary protection of the nearby Alameda Point California Least Tern colony.



ACCESSIBLE PICNIC AREA AND EVENT SPACES



WIDE STEPS AND LANDINGS TO PROMENADE



VARIETY OF BENCH TYPES FOR VARIETY OF USERS AND NEEDS



WIDE SIDEWALKS, PATHWAYS AND BIKEWAYS



WIDE GRADUAL SLOPED PATHS TO PROMENADE



PROTECTED SEATING AREA



PUBLIC RESTROOMS AT CONVENIENT LOCATION



GROVE TREE

OPTION 1: GINKGO BILOBA

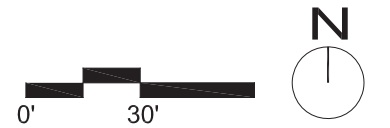


OPTION 2: PLATANUS X ACERIFOLIA
'YARWOOD'



TAXIWAY PALM

WASHINTONIA ROBUSTA



Note: The planting will follow the Bay Friendly landscaping guidelines.

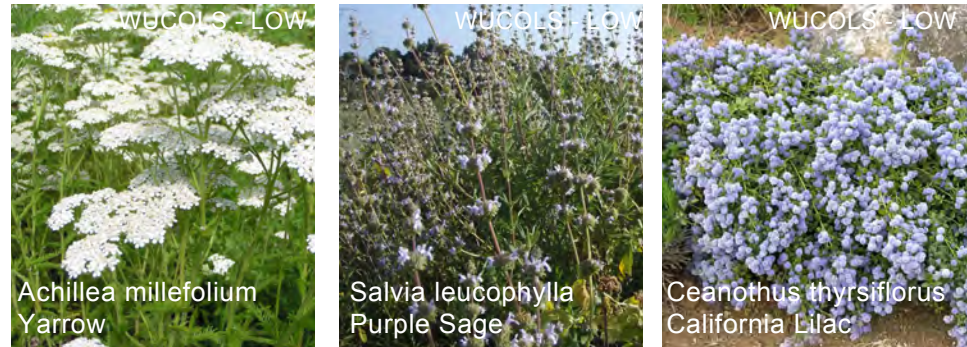
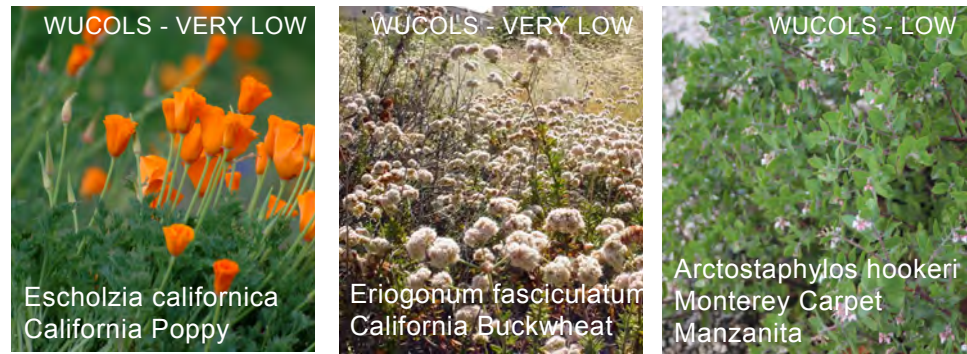
Note: The Waterfront Park design will adhere to the Site Biological Restrictions to provide the necessary protection of the nearby Alameda Point California Least Tern colony.



STORMWATER PLANTS



URBAN SHRUBS

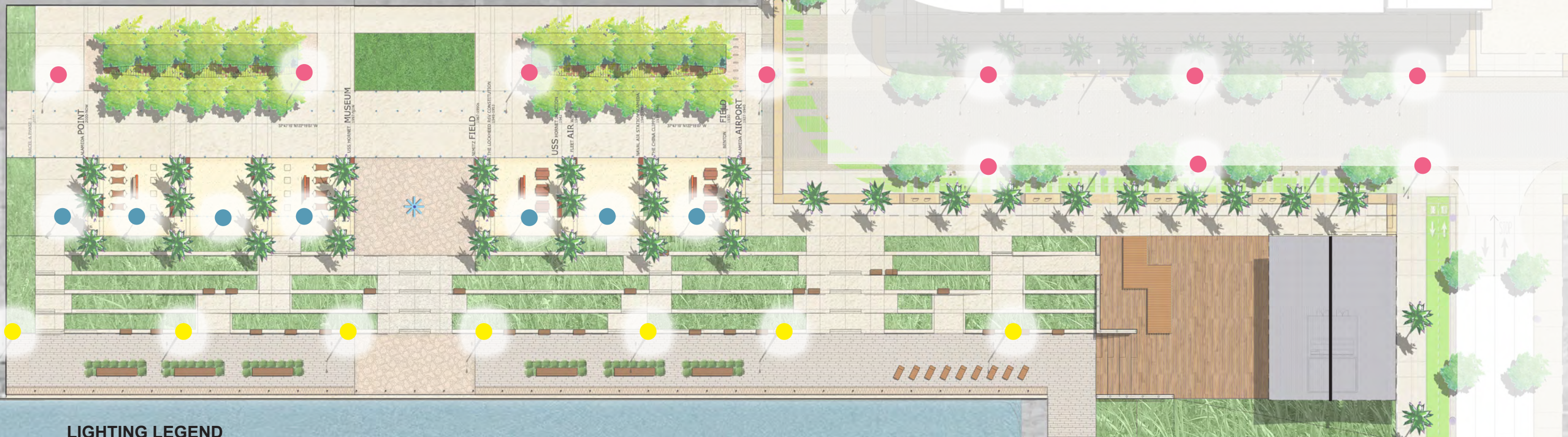


UPLAND MEADOW + DUNES






LIGHTING NOTES:
 THE PHASE 1 SITE IS IN EAST MARINA AREA. LIGHTING IN THIS AREA HAS NO POTENTIAL TO IMPACTING THE NIGHTTIME AMBIENT LIGHTING AT THE LEAST TERN COLONY.

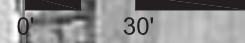
THE SITE IS IN AREA H (ALAMEDA POINT BIOLOGICAL OPINION AREAS). THE LIGHTING PLAN WILL COMPLY WITH THE SECTION BO-AMM-7

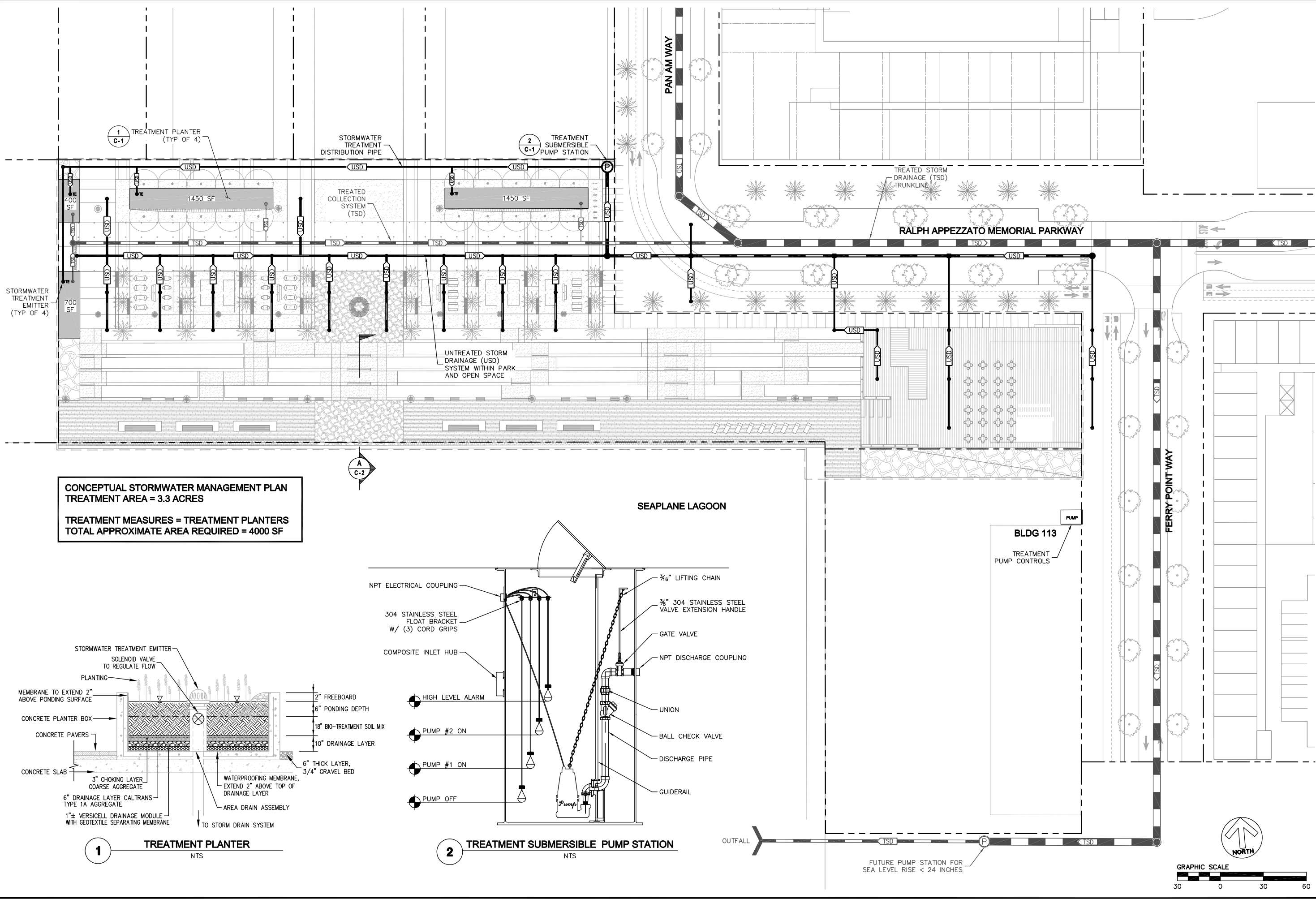


LIGHTING LEGEND

-  WIND TURBINE WITH POLE LIGHT
-  TAXIWAY POLE LIGHT
-  PROMENADE POLE LIGHT

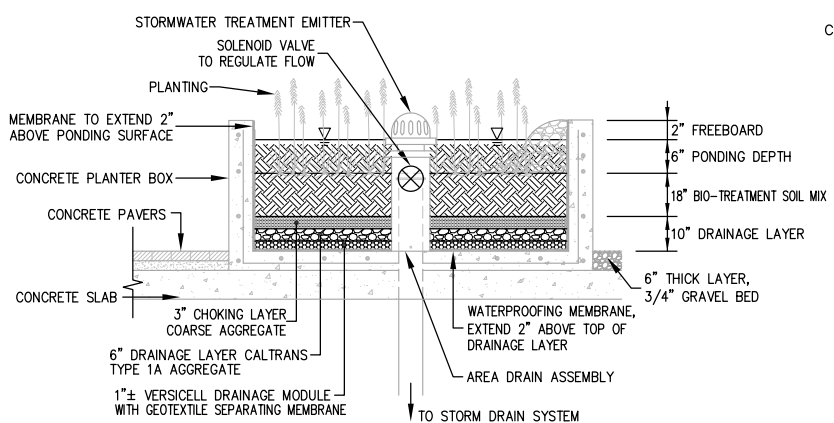
BLDG 113
 PARCEL 5



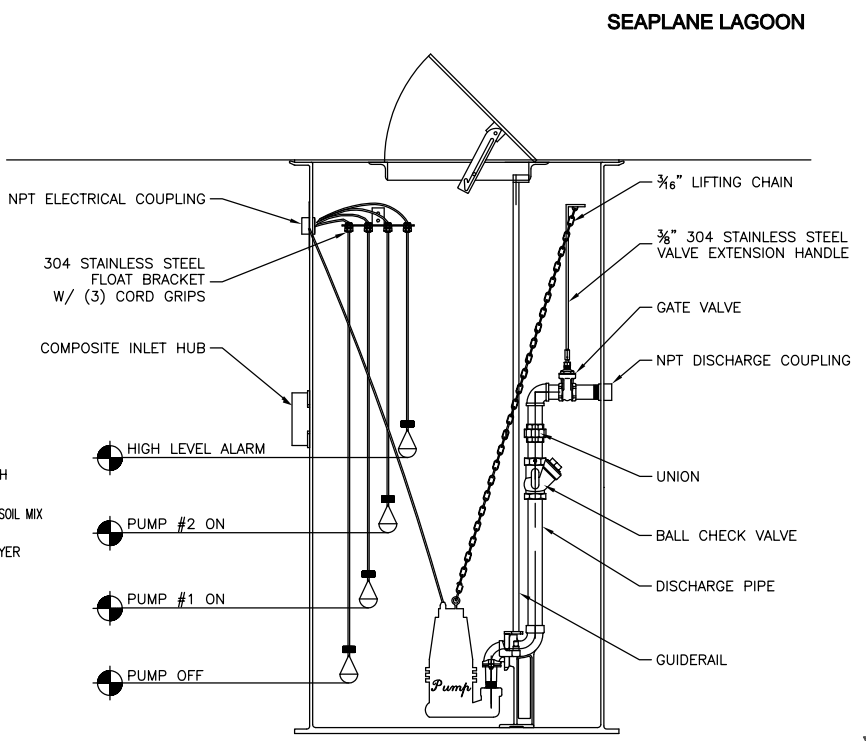


CONCEPTUAL STORMWATER MANAGEMENT PLAN
TREATMENT AREA = 3.3 ACRES

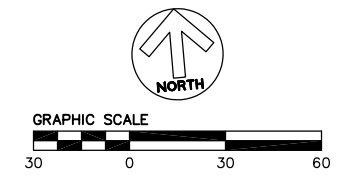
TREATMENT MEASURES = TREATMENT PLANTERS
TOTAL APPROXIMATE AREA REQUIRED = 4000 SF



1 TREATMENT PLANTER
NTS



2 TREATMENT SUBMERSIBLE PUMP STATION
NTS



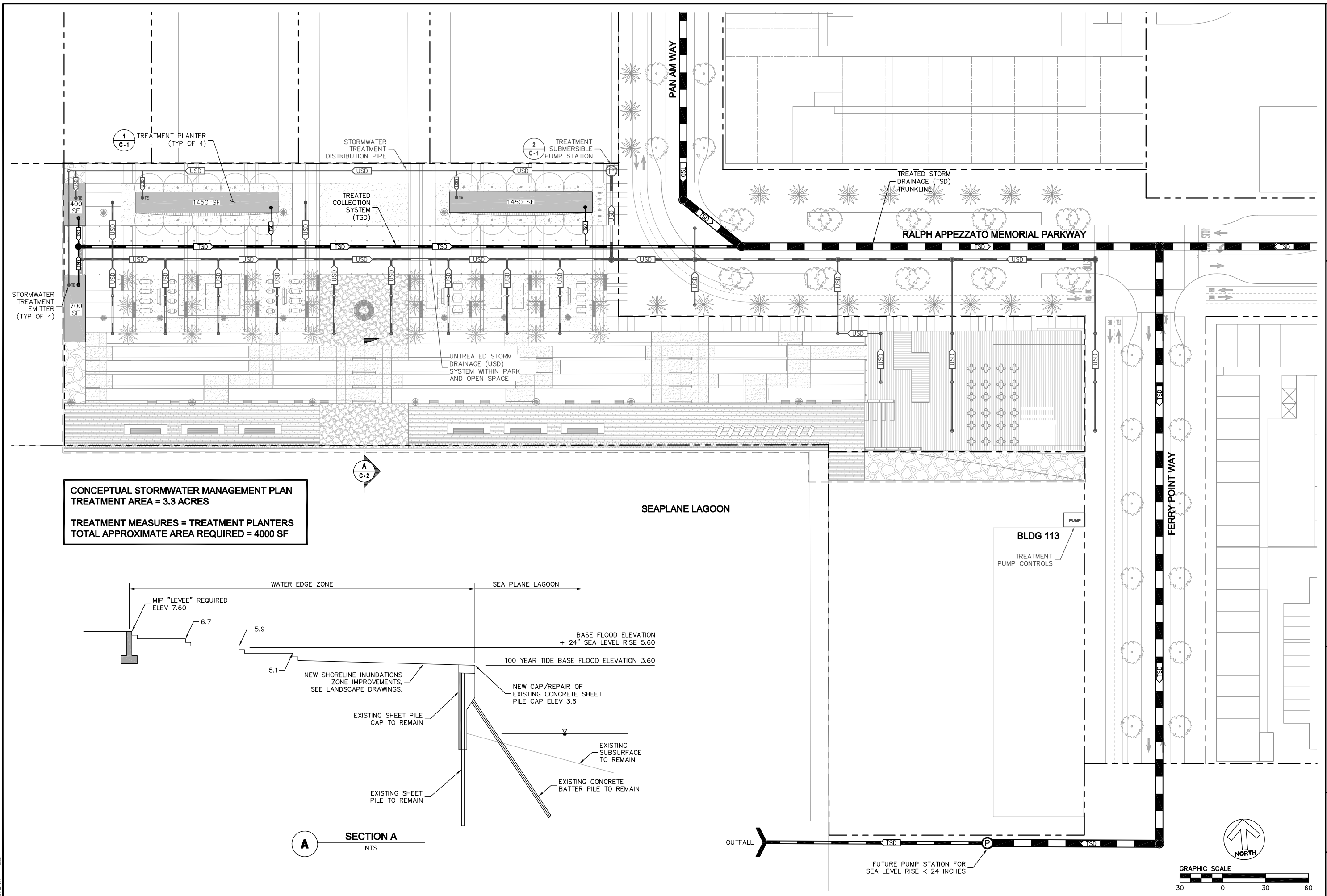
Revisions	
No.	Description

Date: 12/15/15	No.
Scale: AS SHOWN	
Design: DGS	
Drawn: JK	
Approved: DGS	
Job No: 20145170	

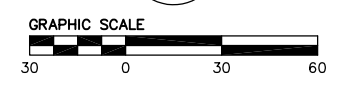
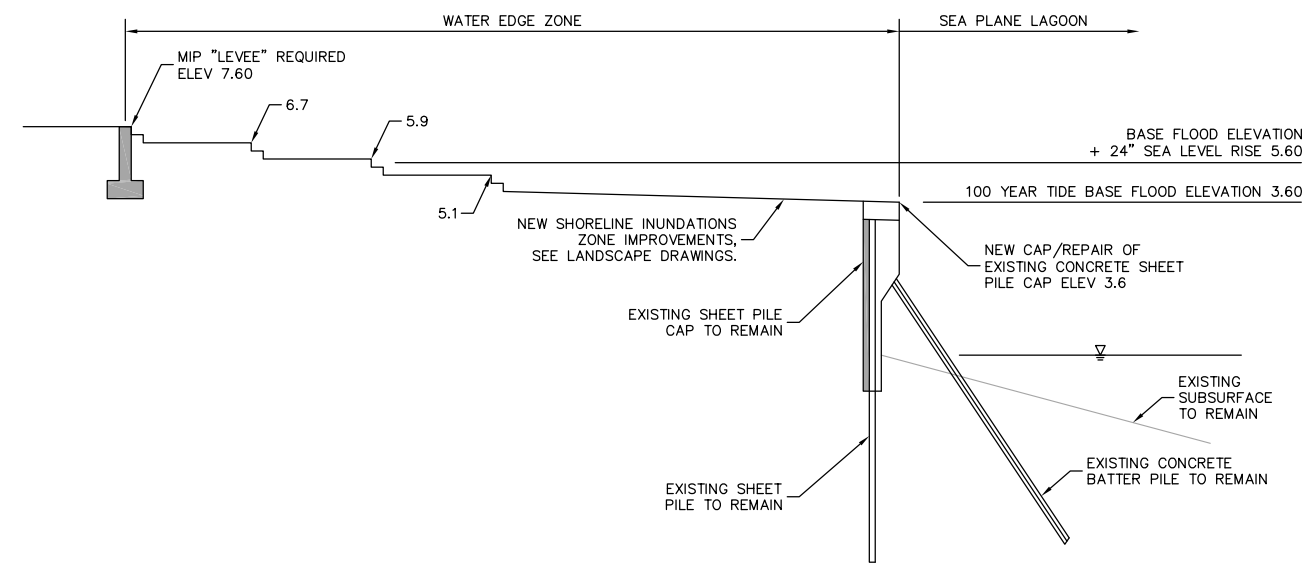
Drawing Number: **C - 1**
1 OF 2

DATE PLOTTED: 12/15/15 10:45 AM
 PLOTTER: HP DesignJet T1100e
 PLOT SCALE: 1" = 10'-0"

ALAMEDA POINT - OPEN SPACE PHASE I
TREATMENT CONCEPT AND
TREATED STORMWATER COLLECTION SYSTEM
ALAMEDA COUNTY
CITY OF ALAMEDA
CALIFORNIA



CONCEPTUAL STORMWATER MANAGEMENT PLAN
TREATMENT AREA = 3.3 ACRES
TREATMENT MEASURES = TREATMENT PLANTERS
TOTAL APPROXIMATE AREA REQUIRED = 4000 SF



No.	Date	Revisions
	12/15/15	

Date: 12/15/15
Scale: AS SHOWN
Design: DCS
Drawn: JK
Approved: DCS
Job No: 20145170

Drawing Number:
2 OF 2

DRAWING NAME: ALAMEDA POINT - OPEN SPACE PHASE I - TREATED STORMWATER COLLECTION SYSTEM
DATE: 12/15/15
PROJECT NO: 20145170