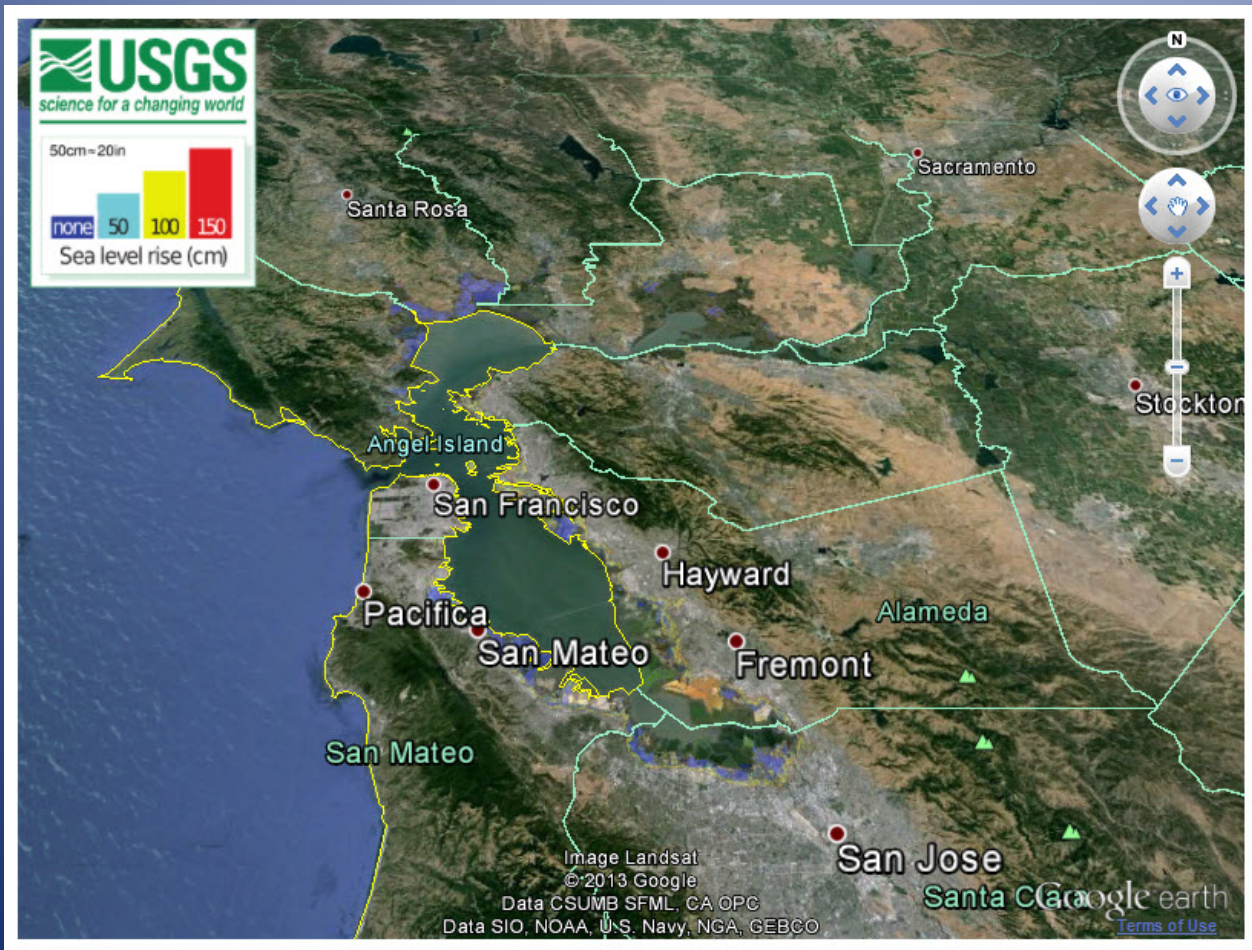


# *Swimming to New Orleans*



Dedicated to VPB-71 Black Cat Squadron

# Who do you Trust?



# Andrew is Right

## POTENTIAL INUNDATION DUE TO RISING SEA LEVELS IN THE SAN FRANCISCO BAY REGION

*A Paper From:*  
**California Climate Change Center**

*Prepared By:*  
**Noah Knowles**  
**U.S. Geological Survey**

### DISCLAIMER

This paper was prepared as the result of work sponsored by the California Energy Commission (Energy Commission) and the California Environmental Protection Agency (Cal/EPA). It does not necessarily represent the views of the Energy Commission, Cal/EPA, their employees, or the State of California. The Energy Commission, Cal/EPA, the State of California, their employees, contractors, and subcontractors make no warrant, express or implied, and assume no legal liability for the information in this paper; nor does any party represent that the uses of this information will not infringe upon privately owned rights. This paper has not been approved or disapproved by the California Energy Commission or Cal/EPA, nor has the California Energy Commission or Cal/EPA passed upon the accuracy or adequacy of the information in this paper.



Arnold Schwarzenegger, *Governor*



# The Problem

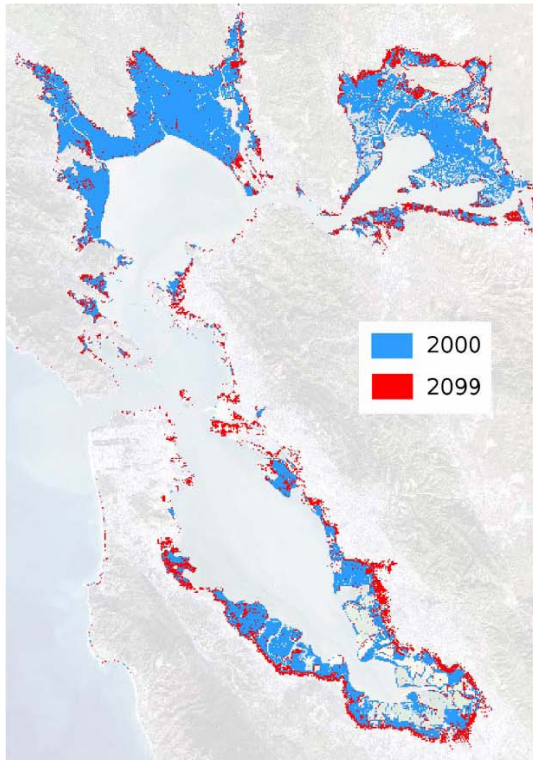


Figure 5. Areas inundated or vulnerable to inundation by average yearly Bay high-water levels as of 2000 (blue), and as of 2099 under a projected 139 cm sea level rise (red)

- Alameda Point is under water in 2099
  - Or maybe sooner.
- What are we planning for?



# *The Bus Solution?*



12 | Burr R., San Francisco, CA | burr@alameda.org



# *Ferry will still work*



# *Catalina Cove Maybe*



- What Plan will work in the long term?
- Or are we just Dunking for Dollars now?

It would look even better if it wasn't underwater.



# *Swimming to New Orleans*



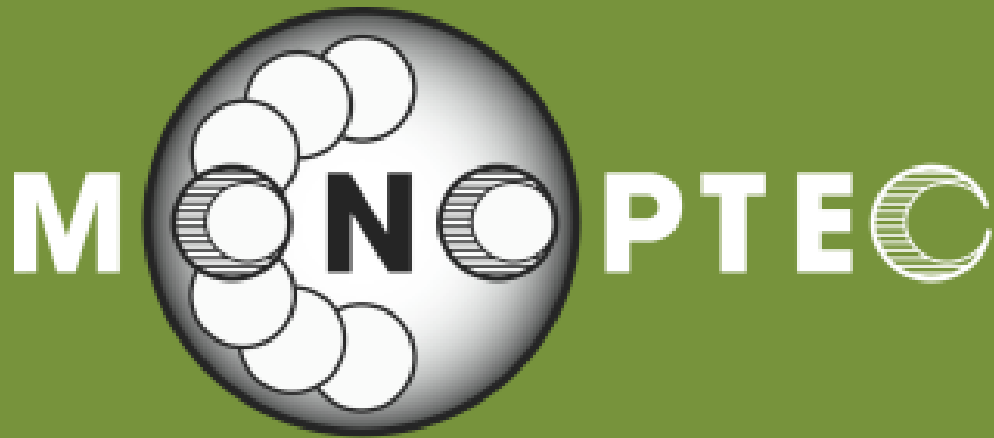
© SWNS.COM

Alameda Catalytic Corporation by  MONOPTIC

2/5/2014







*A Singular Vision of Technology*

*Please direct your letters of interest,  
and your questions regarding **Alley Cat** to:*

Ethan W. Clifton CEO

MONOPTEC Corporation

1933 Davis Street, Suite 289

San Leandro, California 94577 USA

+ 1 415 264-6519

[fixedshutterdome@monooptec.com](mailto:fixedshutterdome@monooptec.com)