

# Natel Energy PLN24-0059 Figures and Renderings

STREET VIEW 1, FACING WEST.  
PROPOSED



Exhibit 2  
Item 5-A, April 22, 2024  
Planning Board Meeting

2024 NATEL ENERGY INC.  
GREGOR CADMAN, C.O.O.  
[GREGOR@NATELENERGY.COM](mailto:GREGOR@NATELENERGY.COM)  
617.413.0778

Confidential, Natel Energy Inc. Not for distribution beyond intended recipient.

STREET VIEW 1, FACING WEST.  
PROPOSED  
(alternative without screen facade over aquaculture system. Natel will work with staff for appropriate material if screening is preferred.)



2024 NATEL ENERGY INC.  
GREGOR CADMAN, C.O.O.  
[GREGOR@NATELENERGY.COM](mailto:GREGOR@NATELENERGY.COM)  
617.413.0778

Confidential, Natel Energy Inc. Not for distribution beyond intended recipient.

STREET VIEW 1, FACING WEST. EXISTING



2024 NATEL ENERGY INC.  
GREGOR CADMAN, C.O.O.  
[GREGOR@NATELENERGY.COM](mailto:GREGOR@NATELENERGY.COM)  
617.413.0778

Confidential, Natel Energy Inc. Not for distribution beyond intended recipient.

STREET VIEW 2, FACING WEST.  
PROPOSED



2024 NATEL ENERGY INC.  
GREGOR CADMAN, C.O.O.  
[GREGOR@NATELENERGY.COM](mailto:GREGOR@NATELENERGY.COM)  
617.413.0778

Confidential, Natel Energy Inc. Not for distribution beyond intended recipient.

STREET VIEW 2, FACING WEST.  
PROPOSED

(alternative without screen facade over aquaculture system. Natel will work with staff for appropriate material if screening is preferred.)



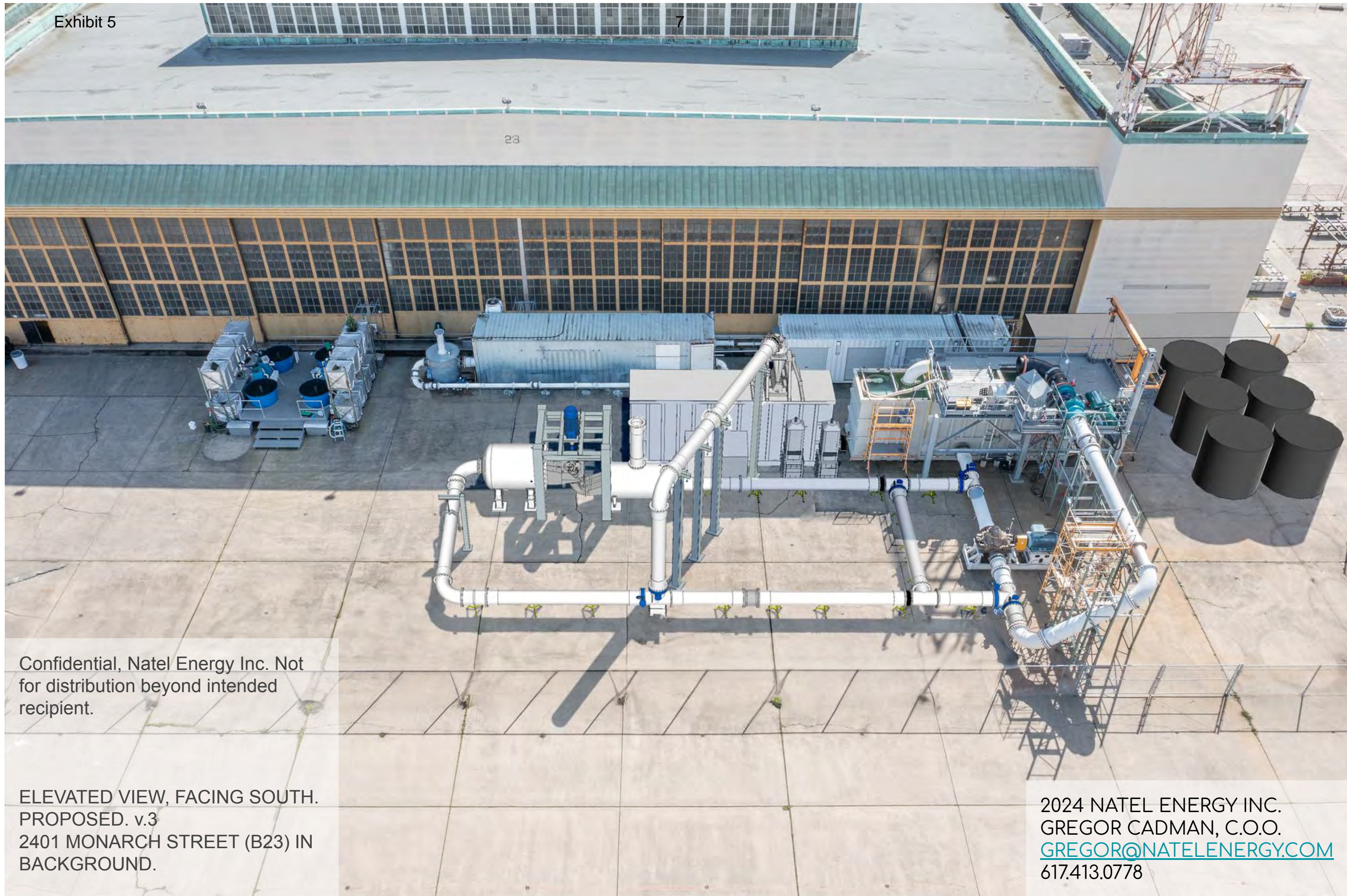
2024 NATEL ENERGY INC.  
GREGOR CADMAN, C.O.O.  
[GREGOR@NATELENERGY.COM](mailto:GREGOR@NATELENERGY.COM)  
617.413.0778

Confidential, Natel Energy Inc. Not for distribution beyond intended recipient.

STREET VIEW 2, FACING WEST. EXISTING



2024 NATEL ENERGY INC.  
GREGOR CADMAN, C.O.O.  
[GREGOR@NATELENERGY.COM](mailto:GREGOR@NATELENERGY.COM)  
617.413.0778



Confidential, Natel Energy Inc. Not for distribution beyond intended recipient.

ELEVATED VIEW, FACING SOUTH. PROPOSED. v.3  
2401 MONARCH STREET (B23) IN BACKGROUND.

2024 NATEL ENERGY INC.  
GREGOR CADMAN, C.O.O.  
[GREGOR@NATELENERGY.COM](mailto:GREGOR@NATELENERGY.COM)  
617.413.0778

Confidential, Natel Energy Inc. Not for distribution beyond intended recipient.

PLAN VIEW, NORTH UP.  
PROPOSED. v.3  
2401 MONARCH STREET (B23) IN  
LOWER FRAME.



2024 NATEL ENERGY INC.  
GREGOR CADMAN, C.O.O.  
[GREGOR@NATELENERGY.COM](mailto:GREGOR@NATELENERGY.COM)  
617.413.0778





VA Alameda Point Site Entrance

PROPERTY LINE (APPROX.)

MIDWAY AVENUE

|GATE|

FENCELINE (EXISTING)

|GATE|

PROPOSED EQUIPMENT

Natel Energy



NORTH

100'

200'

2401 MONARCH (BUILDING 23)

2024 NATEL ENERGY INC.  
 GREGOR CADMAN, C.O.O.  
[GREGOR@NATELENERGY.COM](mailto:GREGOR@NATELENERGY.COM)  
 617.413.0778

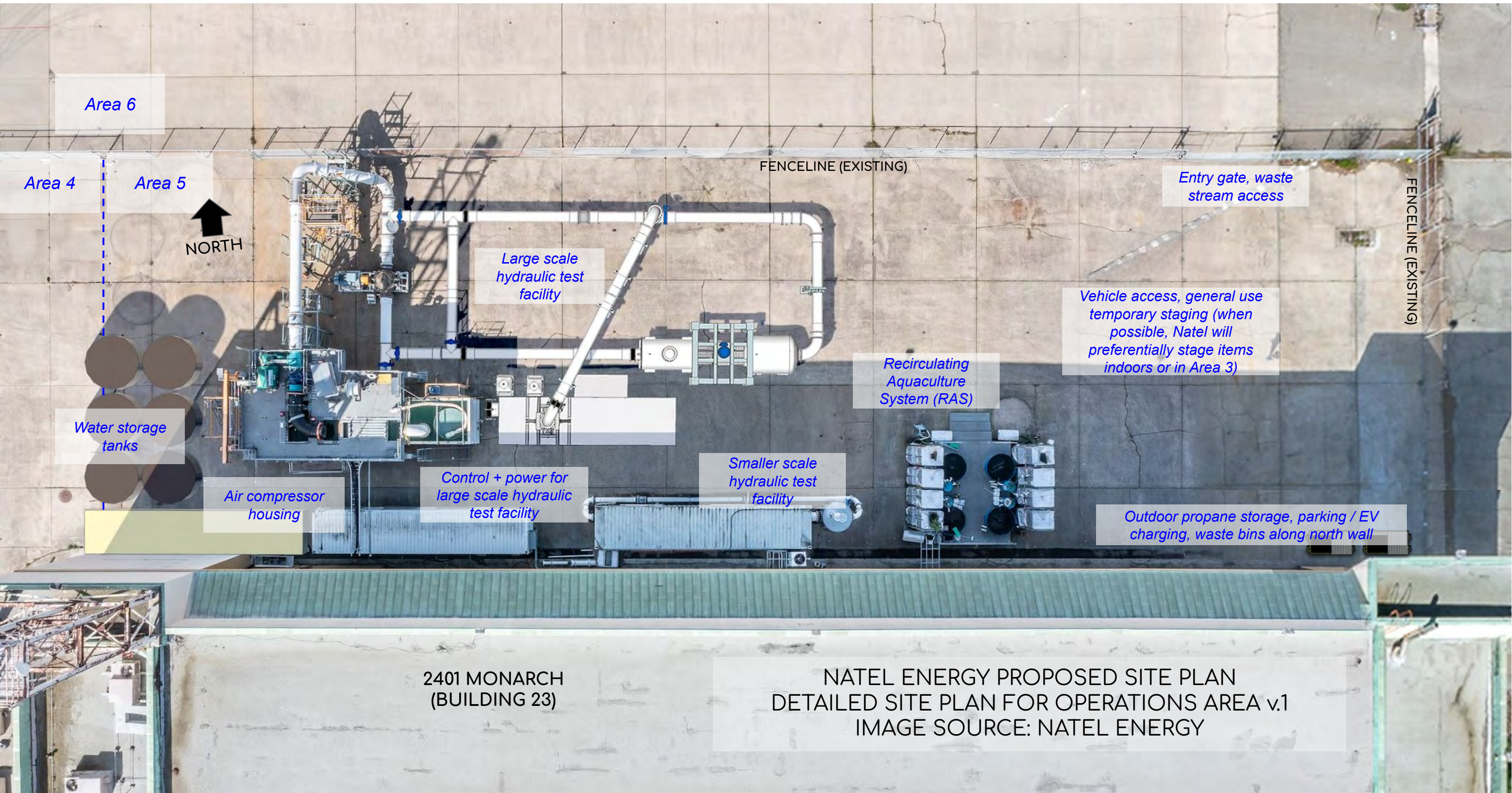
PUBLIC ROAD (MONARCH ST)  
Monarch St

Monarch St

h St

NATEL ENERGY PROPOSED SITE PLAN  
 INTERMEDIATE SCALE VIEW v.2  
 IMAGE SOURCE: GOOGLE MAPS





Area 6

Area 4

Area 5



Water storage tanks

Air compressor housing

Control + power for large scale hydraulic test facility

Smaller scale hydraulic test facility

Recirculating Aquaculture System (RAS)

Outdoor propane storage, parking / EV charging, waste bins along north wall

Large scale hydraulic test facility

Entry gate, waste stream access

Vehicle access, general use temporary staging (when possible, Natel will preferentially stage items indoors or in Area 3)

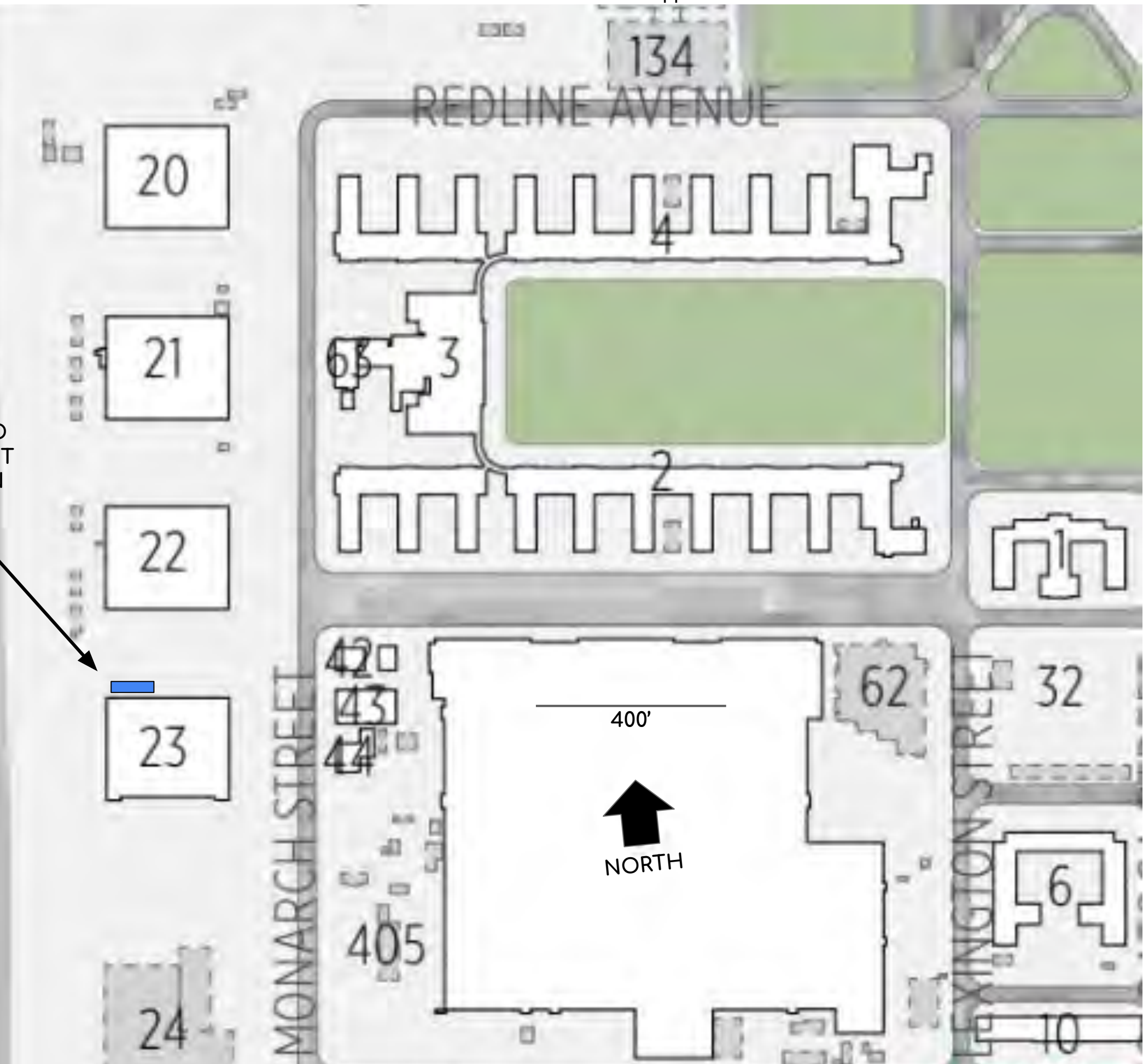
FENCELINE (EXISTING)

FENCELINE (EXISTING)

2401 MONARCH (BUILDING 23)

NATEL ENERGY PROPOSED SITE PLAN  
DETAILED SITE PLAN FOR OPERATIONS AREA v.1  
IMAGE SOURCE: NATEL ENERGY

PROPOSED  
EQUIPMENT  
LOCATION

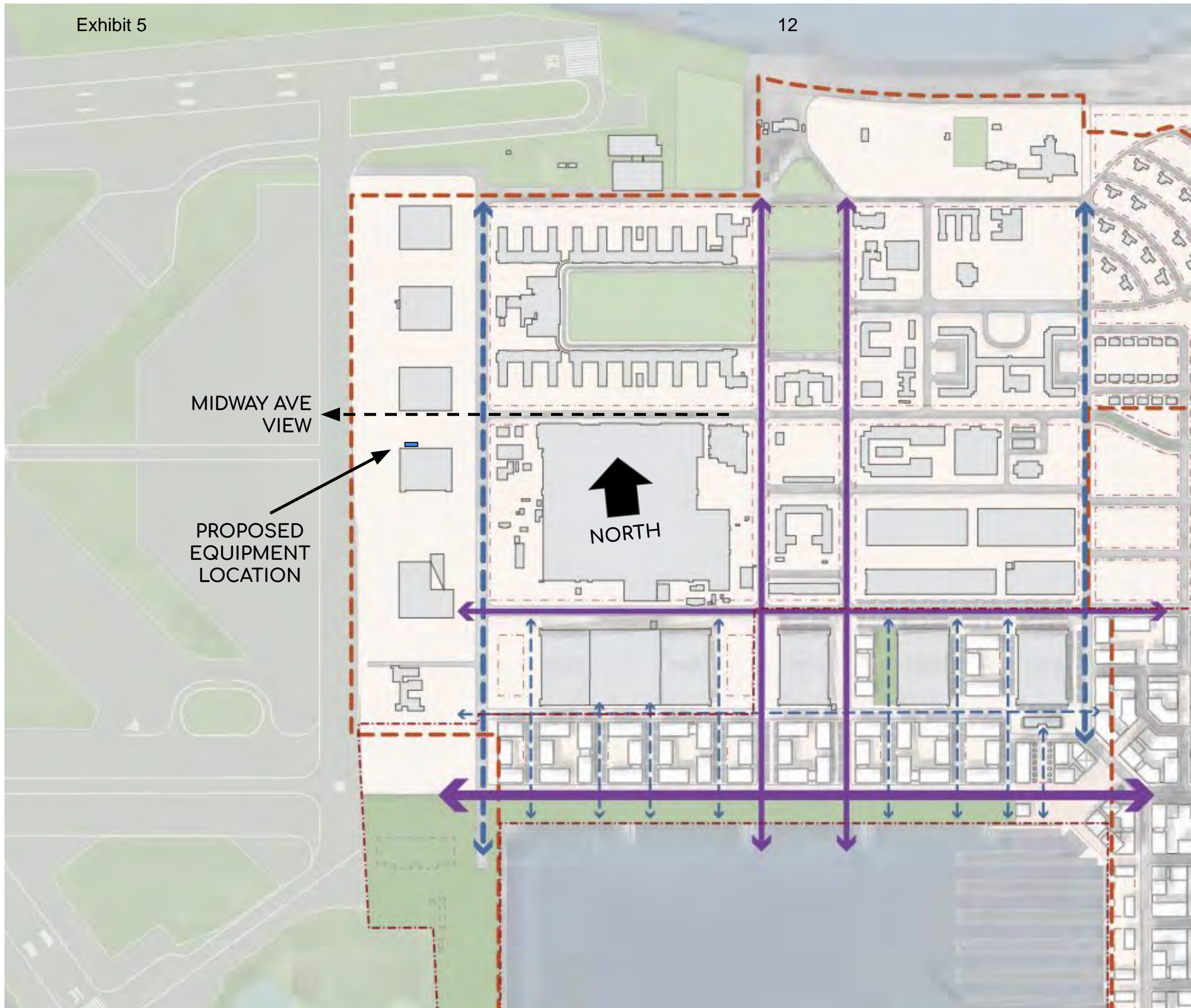


NATEL ENERGY PROPOSED  
SCALE TEST MODEL  
EQUIPMENT - LOCATION

WIDE SCALE VIEW v.2

IMAGE SOURCE: CITY OF  
ALAMEDA

2024 NATEL ENERGY INC.  
GREGOR CADMAN, C.O.O.  
[GREGOR@NATELENERGY.COM](mailto:GREGOR@NATELENERGY.COM)  
617.413.0778



NATEL ENERGY PROPOSED  
SCALE TEST MODEL  
EQUIPMENT - LOCATION  
RELATIVE TO VIEW CORRIDORS

VIEW CORRIDOR OVERLAY v.2  
GBC

IMAGE SOURCE: CITY OF  
ALAMEDA, ALAMEDA POINT  
PRECISE PLAN

MIDWAY AVE  
VIEW

PROPOSED  
EQUIPMENT  
LOCATION

NORTH

2024 NATEL ENERGY INC.  
GREGOR CADMAN, C.O.O.  
[GREGOR@NATELENERGY.COM](mailto:GREGOR@NATELENERGY.COM)  
617.413.0778

PROPERTY LINE (APPROX.)

Area 6

FENCELINE (EXISTING)

|GATE|

32'

|GATE|

258'

76'

Area 4

Area 5

LOT USE AREA DIAGRAM  
SEE TABLE 1 IN PERMIT APPLICATION

Area 3

Area 1



NORTH

100'

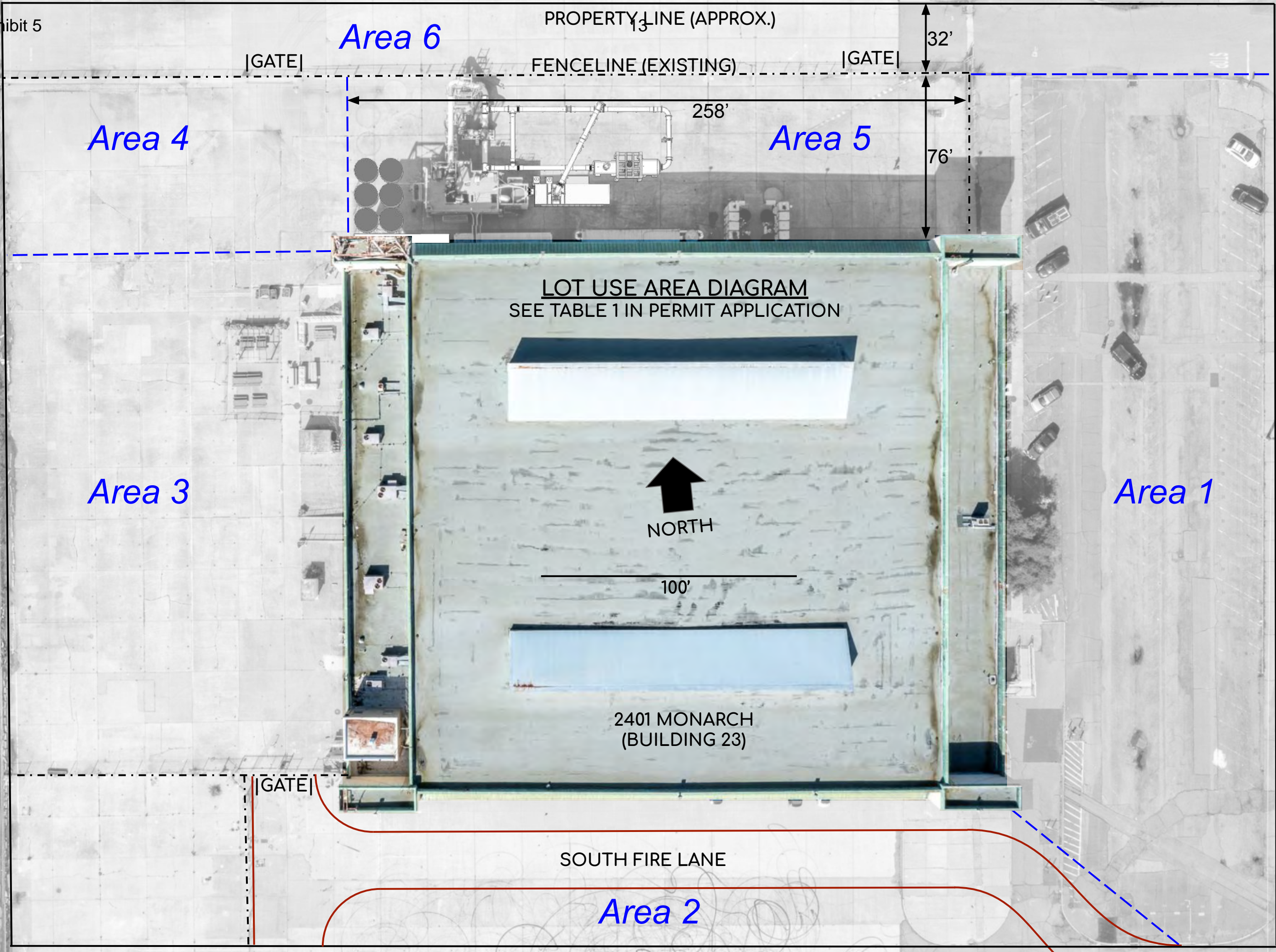
2401 MONARCH  
(BUILDING 23)

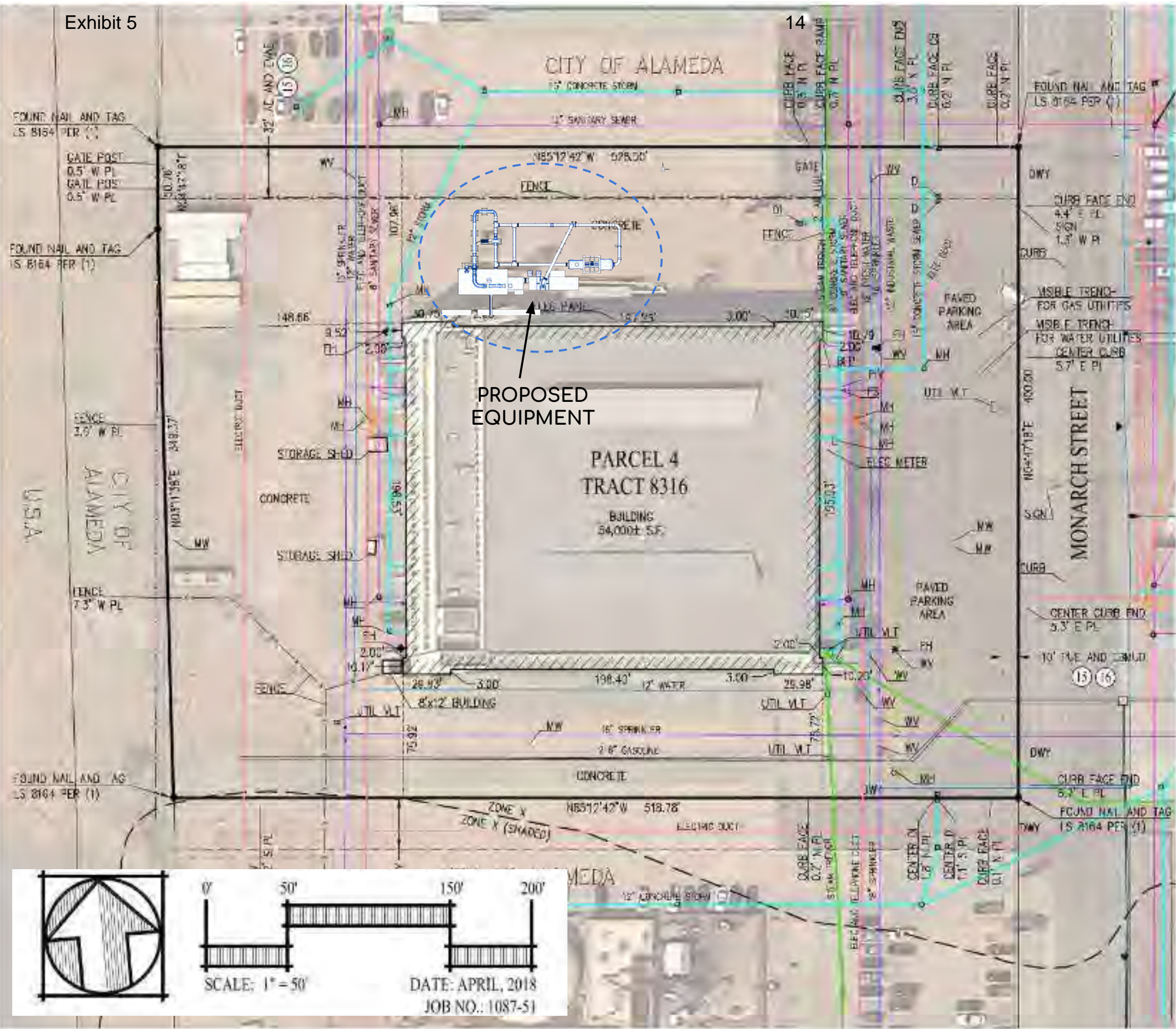
SOUTH FIRE LANE

Area 2

|GATE|

PUBLIC ROAD (MONARCH ST)





NATEL ENERGY PROPOSED SCALE TEST MODEL EQUIPMENT - LOCATION

ALTA SURVEY OVERLAY v.2

IMAGE SOURCE: CITY OF ALAMEDA 2018 ALTA SURVEY

2024 NATEL ENERGY INC.  
 GREGOR CADMAN, C.O.O.  
[GREGOR@NATELENERGY.COM](mailto:GREGOR@NATELENERGY.COM)  
 617.413.0778

REVISION HISTORY				
ZONE	REV	DESCRIPTION	DATE	APPROVED
	0.0	INITIAL RELEASE	20240131	RJS
	0.1	EASTWARD EXPANSION	20240325	RJS

PLANNING DEPARTMENT SUBMISSION FOR REVIEW BY NATEL ENERGY INC. - MARCH 26, 2024

**PROPOSED**  
TOP VIEW

PROPOSED SCALE MODEL HYDRAULIC TEST EQUIPMENT

2024 NATEL ENERGY INC.  
GREGOR CADMAN, C.O.O.  
GREGOR@NATELENERGY.COM  
617.413.0778

STORM DRAIN  
(REF)

PROPERTY LINE NORTH SIDE

3'-6"  
FENCE LINE NORTH SIDE

NORTH

108'-0"

54'-7"

122'-3"

18'-4"

NW CORNER FIRE HYDRANT

LIGHT TOWER

B23 EAST SIDE

PROPERTY LINE WEST SIDE

148'-8" B23 WEST SIDE

B23 NORTH SIDE LENGTH  
257'-6"

OUTDOOR HYDRAULIC TURBINE TEST EQUIPMENT FOR SCALE MODEL PERFORMANCE TESTING IN ACCORDANCE WITH INTERNATIONAL STANDARDS. EQUIPMENT CONSISTS OF MULTIPLE WATER STORAGE TANKS OF A TOTAL CAPACITY OF APPROX. 30,000 GALLONS; A PUMP, PUMP MOTOR, AND VARIABLE FREQUENCY DRIVE SYSTEM; PIPING; AND TURBINE TEST LOCATIONS, INSTRUMENTATION, AND CALIBRATION EQUIPMENT. ELEVATED WORK PLATFORMS FOR TURBINE TESTING ARE INCORPORATED.

UNLESS OTHERWISE SPECIFIED DIMENSIONS ARE IN ENGLISH UNITS.		DRAFTER RJS	INFORMATION DISCLOSED HEREIN IS THE PROPERTY OF NATEL. IT IS FURNISHED FOR EVALUATION PURPOSES ONLY AND SHALL NOT BE DISCLOSED OR USED FOR ANY PURPOSE WITHOUT THE WRITTEN CONSENT OF NATEL. DUPLICATION OF ANY PORTION OF THIS DATA SHALL INCLUDE THIS LEGEND.	
THIRD ANGLE PROJECTION		CHECKER GBC	TITLE NATEL TEST STRUCTURE TOP VIEW	
ENGINEER RJS		SIZE STATUS DWG NO REV 24X36 MASS 153560 A		
3D CAD MASTER PART NAME 153560-E002-SYSTEM-LOOP_ASM.0.5		SCALE 1/8 IN:1 FT MASS SHEET 1 OF 3		

**CONFIDENTIALITY NOTICE**

This drawing contains confidential and/or privileged information property of Natel Energy Inc. and may be legally protected from disclosure. Use, dissemination, or copying of this drawing outside of your organization without permission from Natel Energy is strictly prohibited.

PLANNING DEPARTMENT SUBMISSION FOR REVIEW BY NATEL ENERGY INC. - MARCH 26, 2024

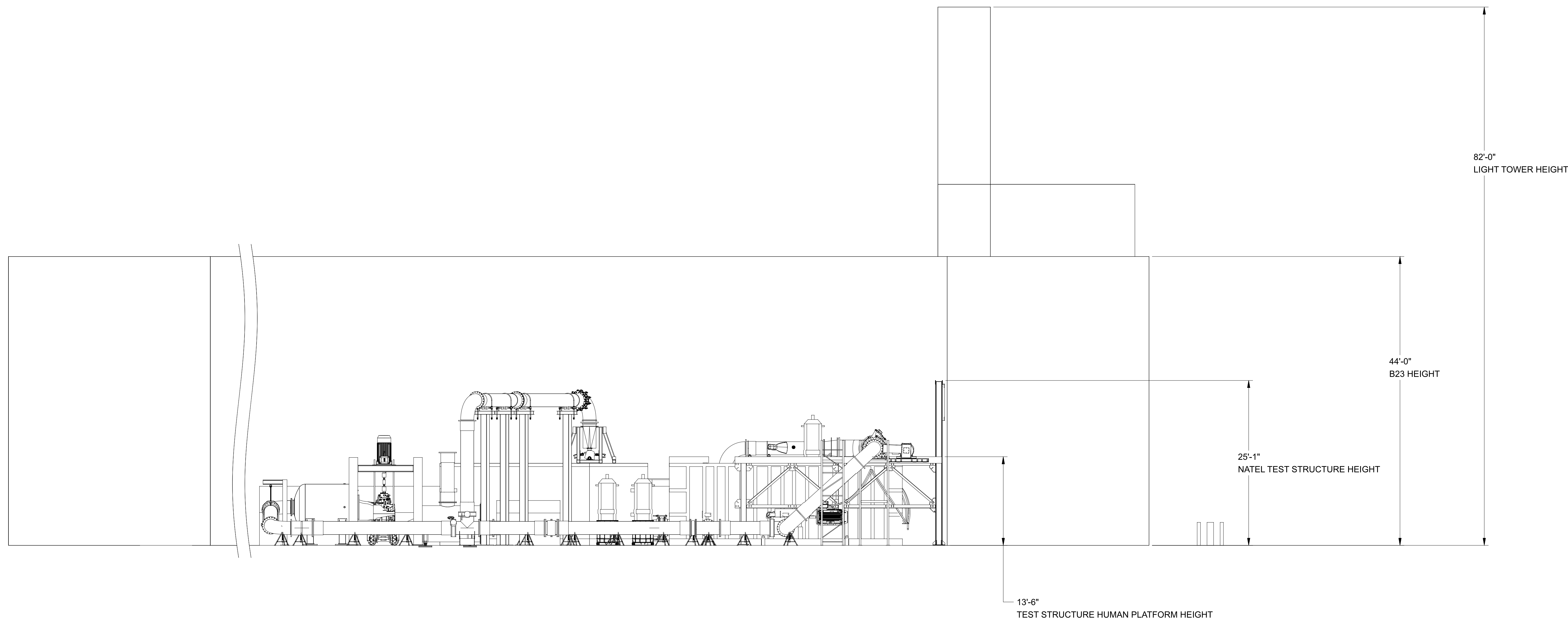
PROPOSED SCALE MODEL HYDRAULIC TEST EQUIPMENT

2024 NATEL ENERGY INC.  
GREGOR CADMAN, C.O.O.  
GREGOR@NATELENERGY.COM  
617.413.0778

REVISION HISTORY				
ZONE	REV	DESCRIPTION	DATE	APPROVED
	0.0	INITIAL RELEASE	20240131	RJS
	0.1	EASTWARD EXPANSION	20240324	RJS

### PROPOSED

SOUTH FACING VIEW



OUTDOOR HYDRAULIC TURBINE TEST EQUIPMENT FOR SCALE MODEL PERFORMANCE TESTING IN ACCORDANCE WITH INTERNATIONAL STANDARDS. EQUIPMENT CONSISTS OF MULTIPLE WATER STORAGE TANKS OF A TOTAL CAPACITY OF APPROX. 30,000 GALLONS; A PUMP, PUMP MOTOR, AND VARIABLE FREQUENCY DRIVE SYSTEM; PIPING; AND TURBINE TEST LOCATIONS, INSTRUMENTATION, AND CALIBRATION EQUIPMENT. ELEVATED WORK PLATFORMS FOR TURBINE TESTING ARE INCORPORATED.

#### CONFIDENTIALITY NOTICE

This drawing contains confidential and/or privileged information property of Natel Energy Inc. and may be legally protected from disclosure. Use, dissemination, or copying of this drawing outside of your organization without permission from Natel Energy is strictly prohibited.

UNLESS OTHERWISE SPECIFIED DIMENSIONS ARE IN ENGLISH UNITS.		DRAFTER CHECKER ENGINEER	RJS GBC RJS	INFORMATION DISCLOSED HEREIN IS THE PROPERTY OF NATEL. IT IS FURNISHED FOR EVALUATION PURPOSES ONLY AND SHALL NOT BE DISCLOSED OR USED FOR ANY PURPOSE WITHOUT THE WRITTEN CONSENT OF NATEL. DUPLICATION OF ANY PORTION OF THIS DATA SHALL INCLUDE THIS LEGEND.	
THIRD ANGLE PROJECTION					
TITLE			NATEL TEST STRUCTURE SOUTH FACE		
3D CAD MASTER PART NAME		SIZE	STATUS	DWG NO	REV
153560-E002-SYSTEM-LOOP_ASM.0.5		24x36		153560	B
SCALE 1/8 IN:1 FT			MASS	SHEET 2 OF 3	



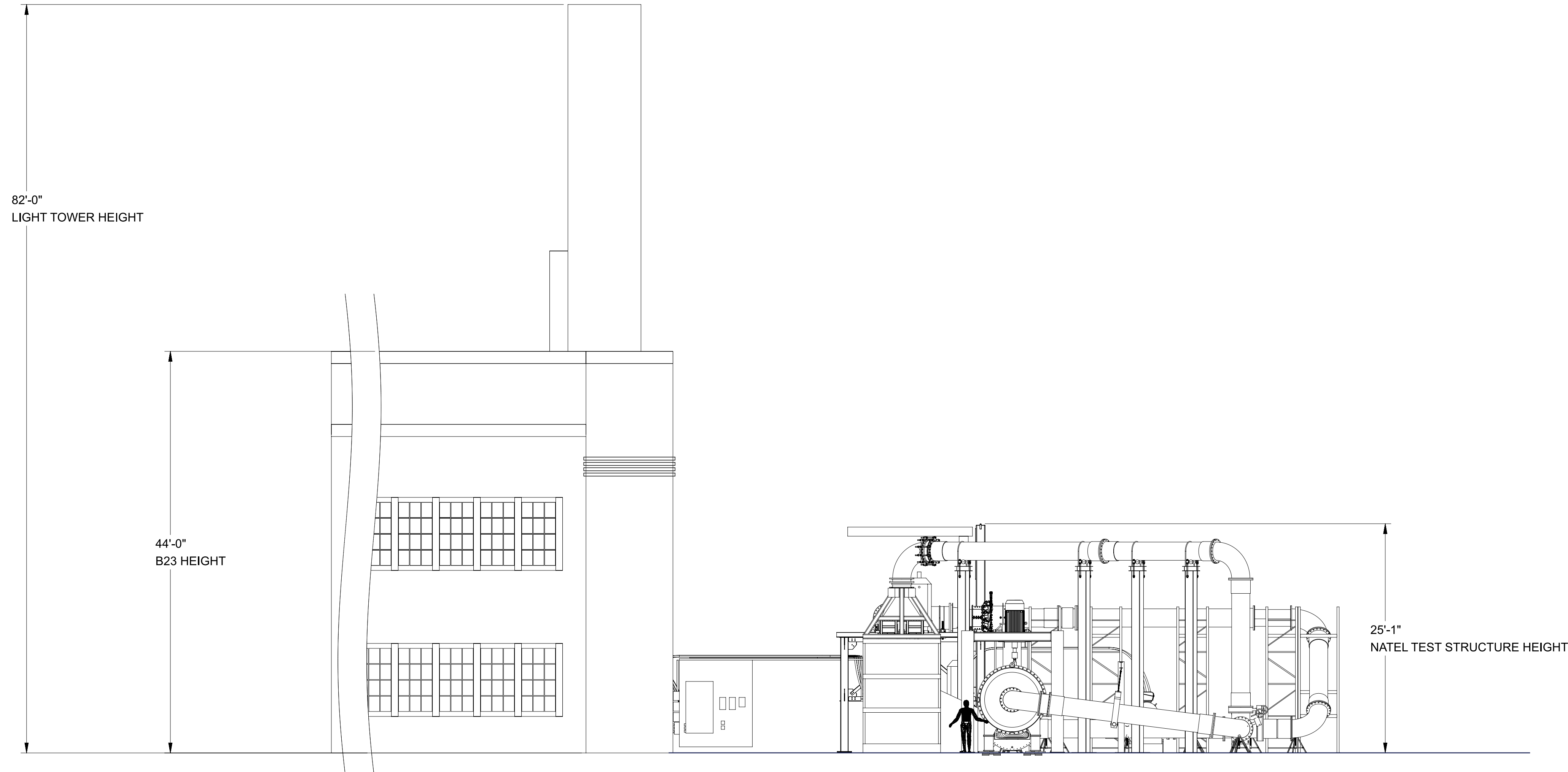
PLANNING DEPARTMENT SUBMISSION FOR REVIEW BY NATEL ENERGY INC. - MARCH 26, 2024

PROPOSED SCALE MODEL HYDRAULIC TEST EQUIPMENT

2024 NATEL ENERGY INC.  
GREGOR CADMAN, C.O.O.  
GREGOR@NATELENERGY.COM  
617.413.0778

REVISION HISTORY				
ZONE	REV	DESCRIPTION	DATE	APPROVED
	0.0	INITIAL RELEASE	20240131	RJS
	0.1	EASTWARD EXPANSION	20240325	RJS

**PROPOSED**  
WEST FACING VIEW



OUTDOOR HYDRAULIC TURBINE TEST EQUIPMENT FOR SCALE MODEL PERFORMANCE TESTING IN ACCORDANCE WITH INTERNATIONAL STANDARDS. EQUIPMENT CONSISTS OF MULTIPLE WATER STORAGE TANKS OF A TOTAL CAPACITY OF APPROX. 30,000 GALLONS; A PUMP, PUMP MOTOR, AND VARIABLE FREQUENCY DRIVE SYSTEM; PIPING; AND TURBINE TEST LOCATIONS, INSTRUMENTATION, AND CALIBRATION EQUIPMENT. ELEVATED WORK PLATFORMS FOR TURBINE TESTING ARE INCORPORATED.

**CONFIDENTIALITY NOTICE**

This drawing contains confidential and/or privileged information property of Natel Energy Inc. and may be legally protected from disclosure. Use, dissemination, or copying of this drawing outside of your organization without permission from Natel Energy is strictly prohibited.

UNLESS OTHERWISE SPECIFIED DIMENSIONS ARE IN ENGLISH UNITS.		DRAFTER RJS	INFORMATION DISCLOSED HEREIN IS THE PROPERTY OF NATEL. IT IS FURNISHED FOR EVALUATION PURPOSES ONLY AND SHALL NOT BE DISCLOSED OR USED FOR ANY PURPOSE WITHOUT THE WRITTEN CONSENT OF NATEL. DUPLICATION OF ANY PORTION OF THIS DATA SHALL INCLUDE THIS LEGEND.	
THIRD ANGLE PROJECTION		CHECKER GBC	TITLE NATEL TEST STRUCTURE WEST FACE	
ENGINEER RJS		3D CAD MASTER PART NAME 153560-E002-SYSTEM-LOOP_ASM.0.5		REV B
SIZE 24x36	STATUS	DWG NO 153560	SCALE 1/8 IN:1 FT MASS SHEET 3 OF 3	