

F. Clay Fry Architect Inc.  
 1164 Crescenta Court  
 Lafayette, CA 94549  
 925-765-2876  
 clayfry@studiofct.com



**BLDG 19**  
 CLEMENT AVENUE  
 ALAMEDA, CALIFORNIA



SOUTH ELEVATION



INTERIOR: CRANE AND STRUCTURE TO REMAIN



SOUTH EAST CORNER

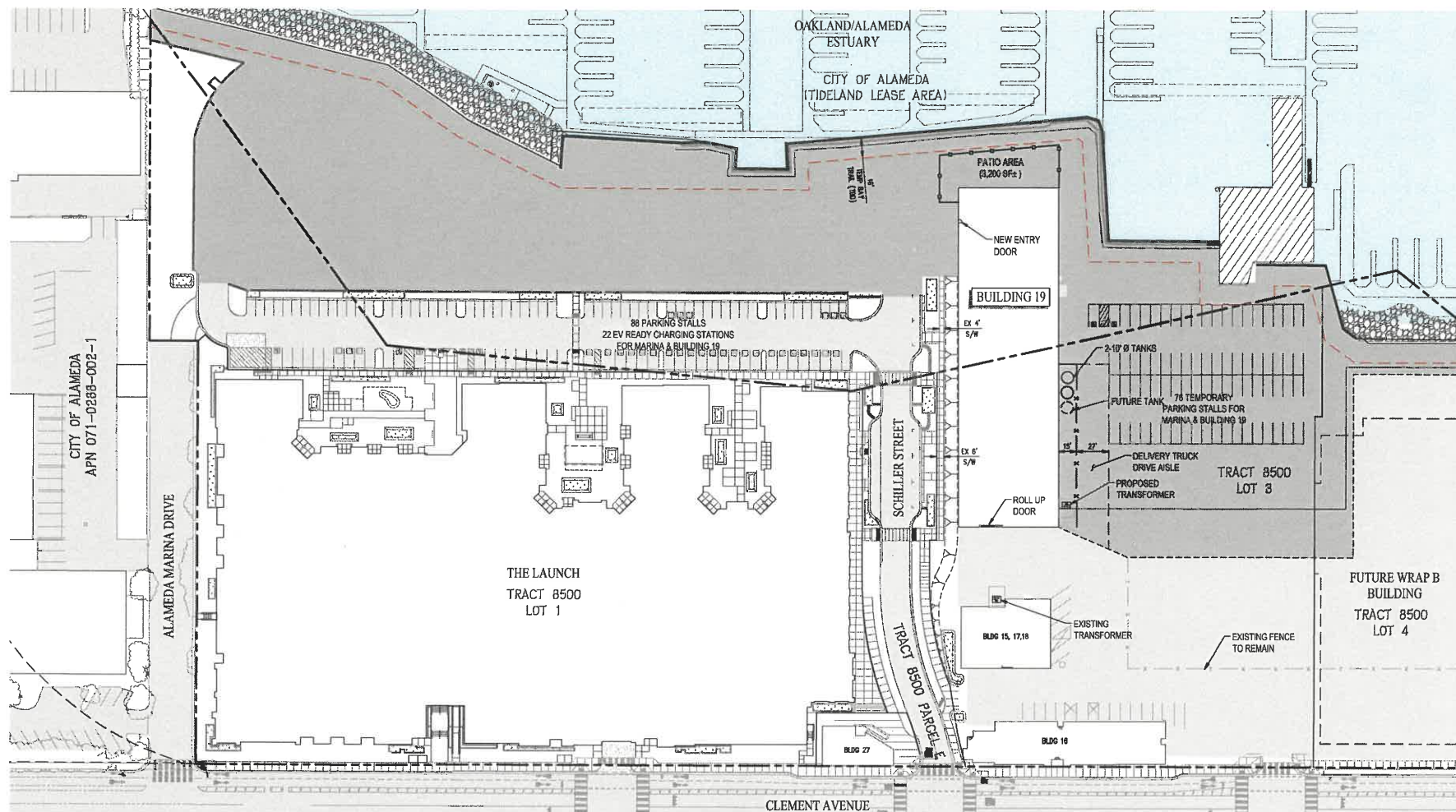


AERIAL (2018)

AUGUST 09, 2022  
 CITY SUBMITTAL

SITE PLAN  
 BLDG PHOTOS

**A1.0**



# BUILDING 19 SITE PLAN ALAMEDA MARINA

CITY OF ALAMEDA ALAMEDA COUNTY CALIFORNIA  
SCALE: 1"=40' DATE: AUGUST 11, 2022

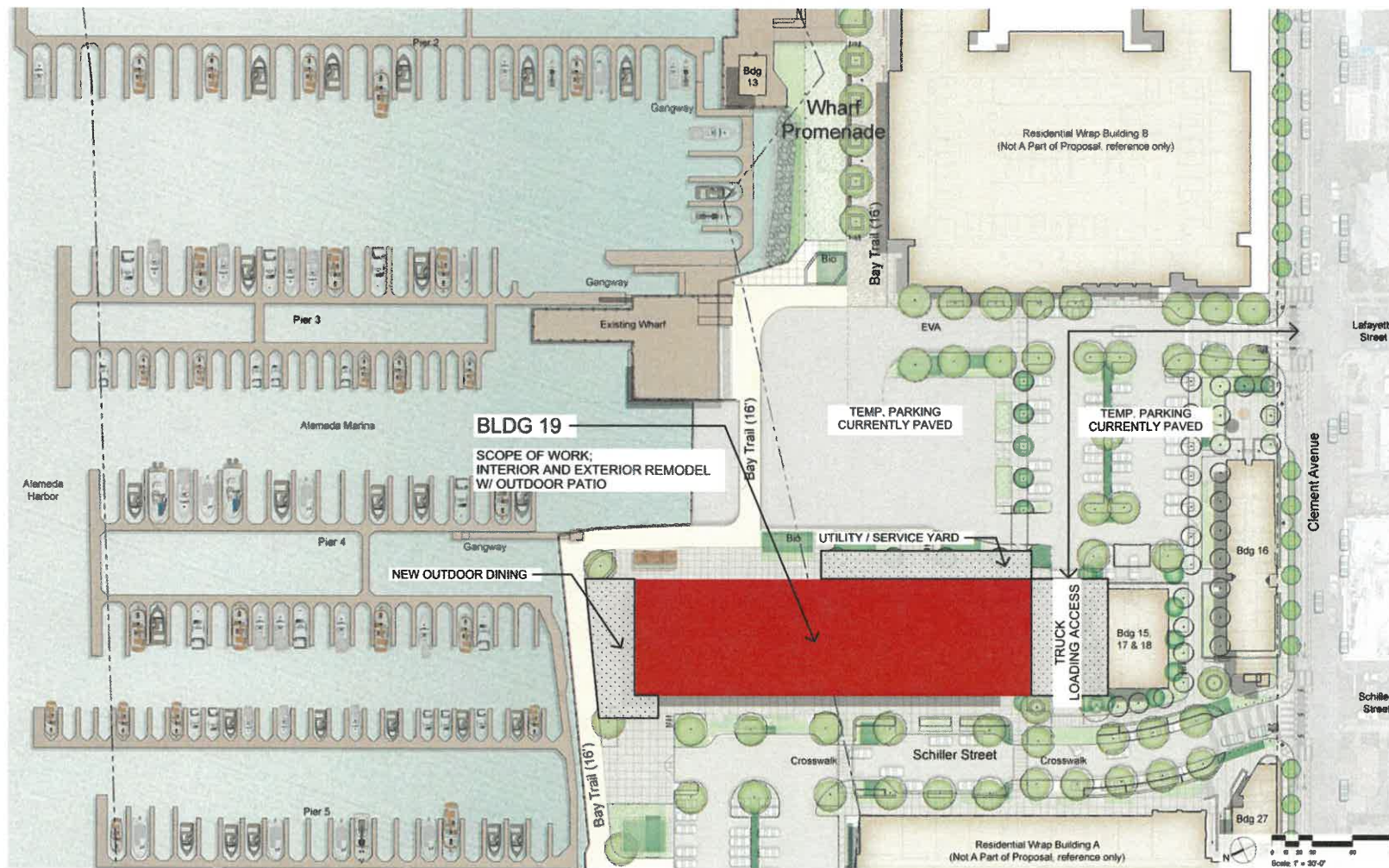
## LEGEND

- EXISTING PAVEMENT TO REMAIN
- TEMPORARY PAVEMENT



SAN RAMON (925) 868-0322  
SACRAMENTO (916) 375-1877  
WWW.CBSANGO.COM  
CIVIL ENGINEERS SURVEYORS PLANNERS





Open Space Enlargement Plan: Commercial Core



F. Clay Fry Architect Inc.  
1164 Crescenta Court  
Lafayette, CA 94549  
925-765-2876  
clayfry@studiofcf.com



**BLDG 19**  
CLEMENT AVENUE  
ALAMEDA, CALIFORNIA

AUGUST 09, 2022  
CITY SUBMITTAL

COMMERCIAL  
CORE

BLDG 19





F. Clay Fry Architect Inc.  
1164 Crescenta Court  
Lafayette, CA 94549  
925-765-2876  
clayfry@studiofcf.com



**BLDG 19**  
CLEMANT AVENUE  
ALAMEDA, CALIFORNIA

AUGUST 09, 2022  
CITY SUBMITTAL

EXISTING  
AERIAL



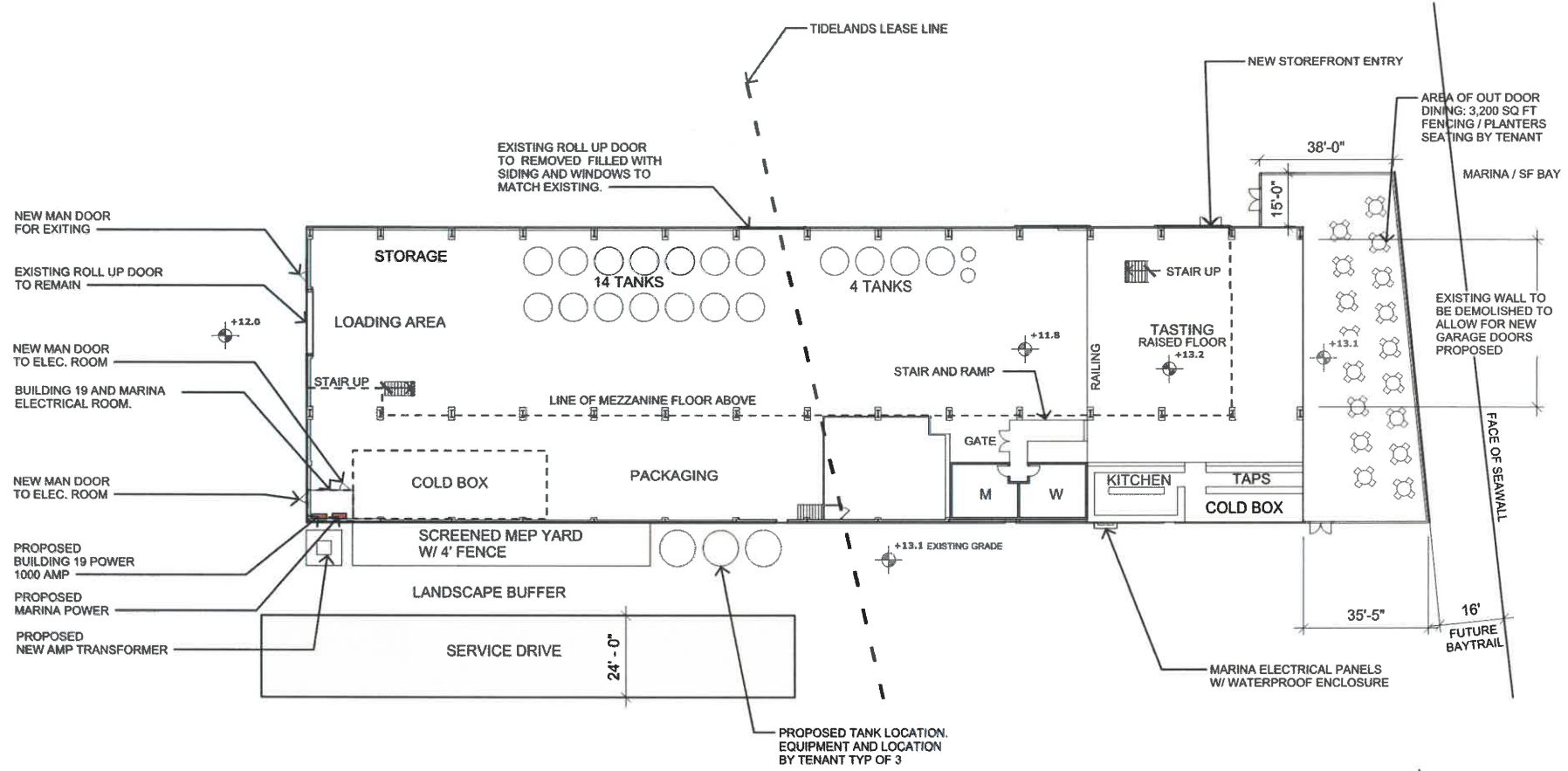
F. Clay Fry Architect Inc.  
1164 Crescenta Court  
Lafayette, CA 94549  
925-765-2876  
clayfry@studiofcf.com



**BLDG 19**  
**CLEMENT AVENUE**  
**ALAMEDA, CALIFORNIA**

AUGUST 09, 2022  
CITY SUBMITTAL

1ST FLOOR  
SPACE PLAN



1ST FLOOR: SPACE PLAN

SCALE: 1" = 30'-0"





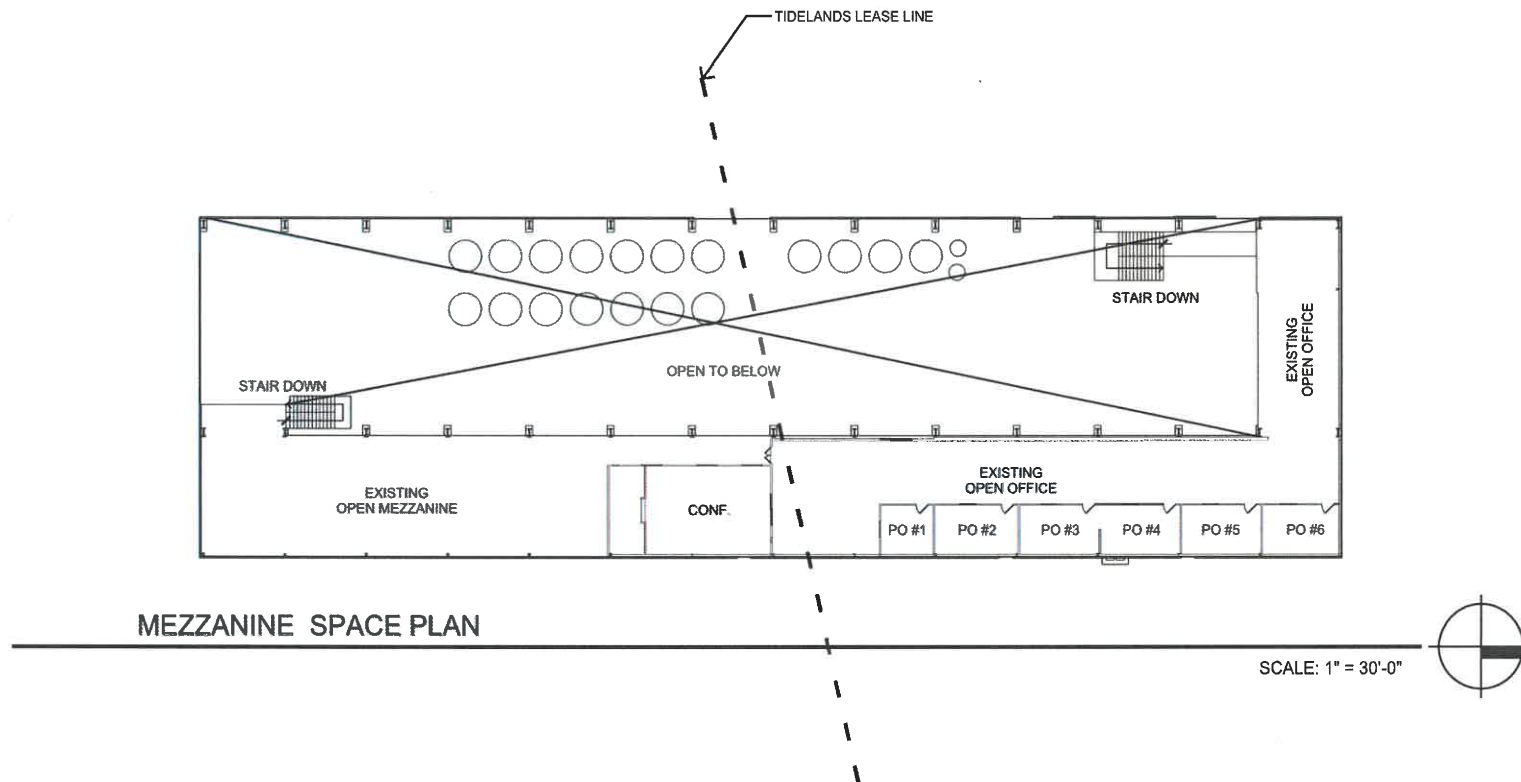
F. Clay Fry Architect Inc.  
1164 Crescenta Court  
Lafayette, CA 94549  
925-765-2876  
clayfry@studiofct.com



**BLDG 19**  
CLEMENT AVENUE  
ALAMEDA, CALIFORNIA

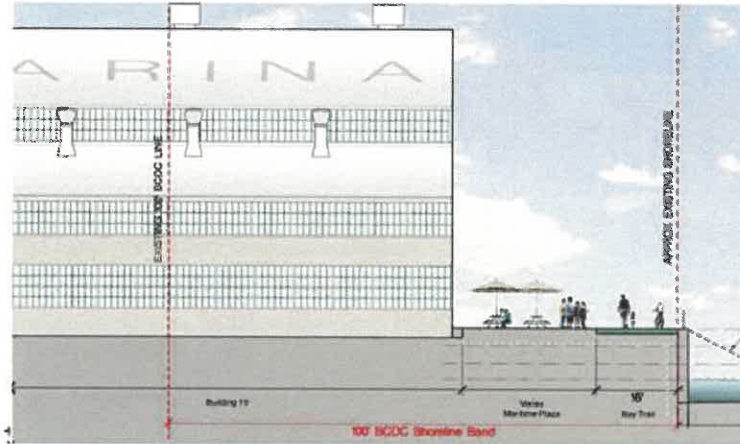
AUGUST 09, 2022  
CITY SUBMITTAL

2ND FLOOR  
SPACE PLAN





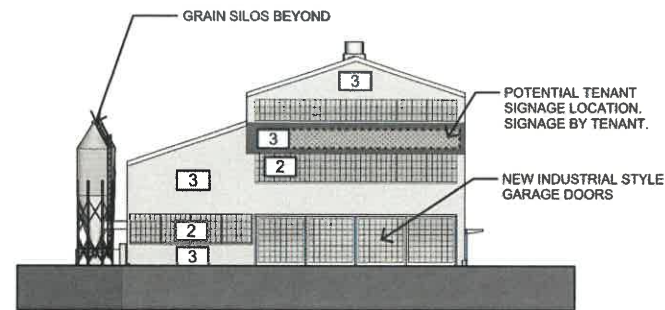
## Section B - Maritime Plaza (EXCERPT FROM MASTER PLAN)



IMAGERY FROM MASTER PLAN



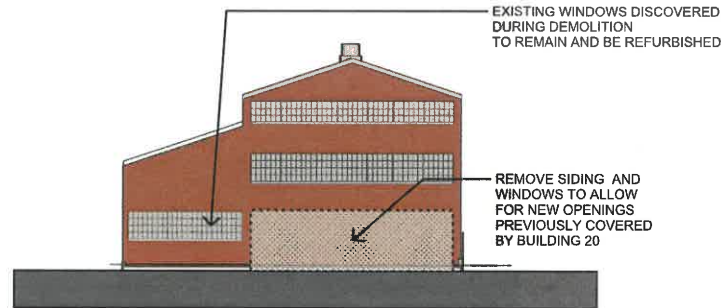
ROLL UP DOOR IMAGE



1

### PROPOSED NORTH ELEVATION

SCALE: 1" = 30'-0"



3

### EXISTING NORTH ELEVATION

SCALE: 1" = 30'-0"

- 1 (E) ROOF TO BE RE-ROOFED
- 2 (E) INDUSTRIAL SASH WINDOWS TO REMAIN. REPAIR, RE-GLAZE AND REPAINT AS REQUIRED.  
  
FLAT BLACK RUSTOLEUM OR EQUAL
- 3 (E) METAL SIDING TO REMAIN. REPAIR AND RE-PAINT GREY AS APPROVED BY HAB. REPLACE DAMAGED OR MISSING SIDING TO MATCH EXISTING PROFILE.

SILVER GALVANIZED METAL PAINT RUSTOLEUM OR EQUAL  
  
FLAT BLACK RUSTOLEUM OR EQUAL



F. Clay Fry Architect Inc.  
1164 Crescenta Court  
Lafayette, CA 94549  
925-765-2876  
clayfry@studiofcl.com



BLDG 19  
CLEMENT AVENUE  
ALAMEDA, CALIFORNIA

AUGUST 09, 2022  
CITY SUBMITTAL

NORTH  
ELEVATION

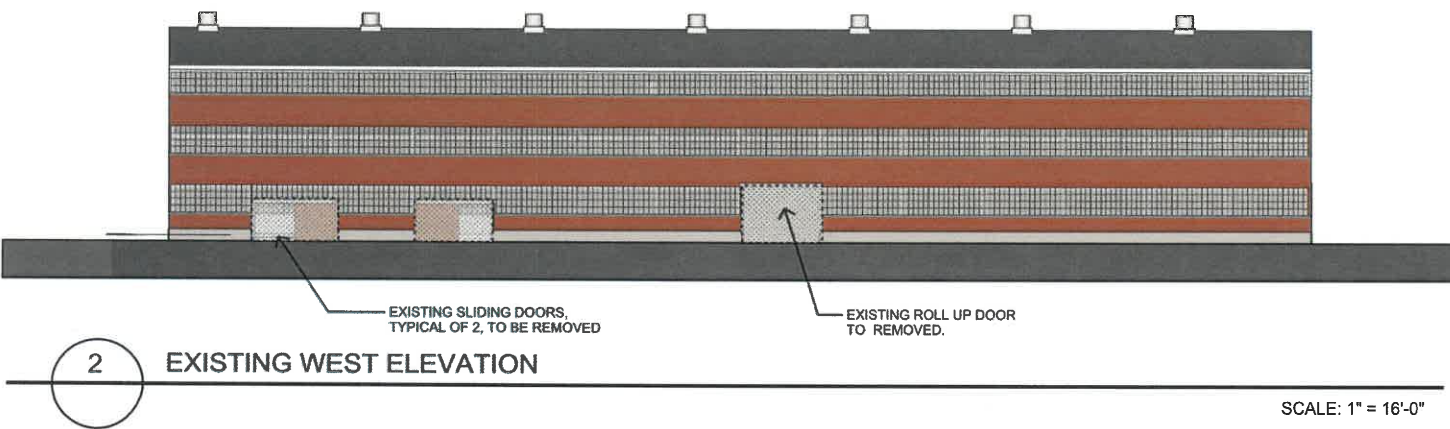
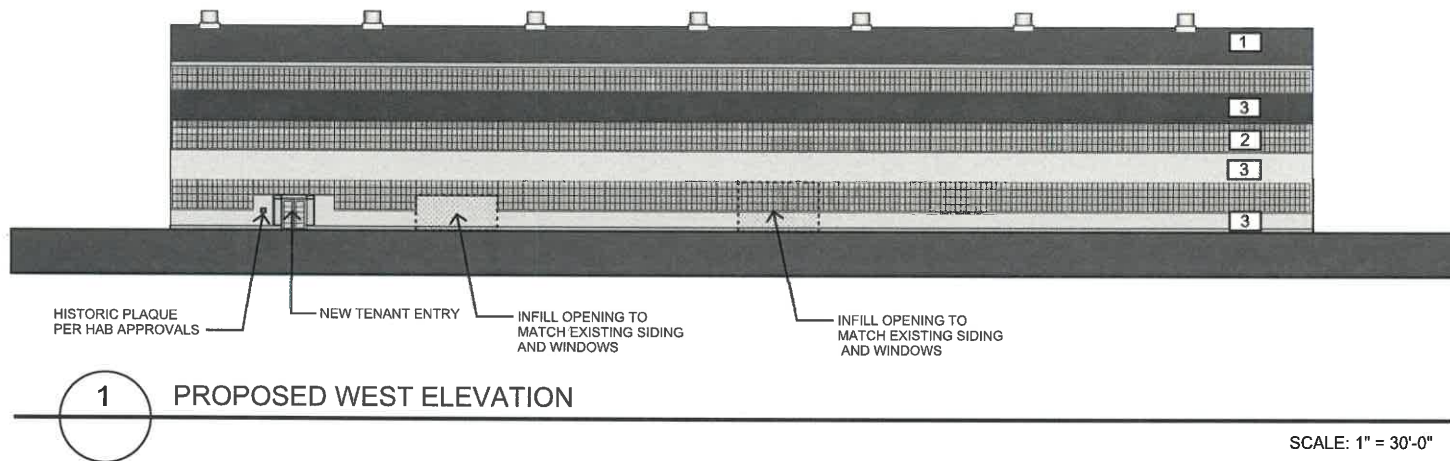
A3.1



PRE - DEMOLITION OF BLDG. 20



POST DEMOLITION OF BLDG. 20



- 1 (E) ROOF TO BE RE-ROOFED
- 2 (E) INDUSTRIAL SASH WINDOWS TO REMAIN. REPAIR, RE-GLAZE AND REPAINT AS REQUIRED.  
FLAT BLACK RUSTOLEUM OR EQUAL
- 3 (E) METAL SIDING TO REMAIN. REPAIR AND RE-PAINT GREY AS APPROVED BY HAB. REPLACE DAMAGED OR MISSING SIDING TO MATCH EXISTING PROFILE.  
SILVER GALVANIZED METAL PAINT RUSTOLEUM OR EQUAL  
FLAT BLACK RUSTOLEUM OR EQUAL



STUDIO  
f c f  
F. Clay Fry Architect Inc.  
1164 Crescenta Court  
Lafayette, CA 94549  
925-765-2876  
clayfry@studiofcf.com



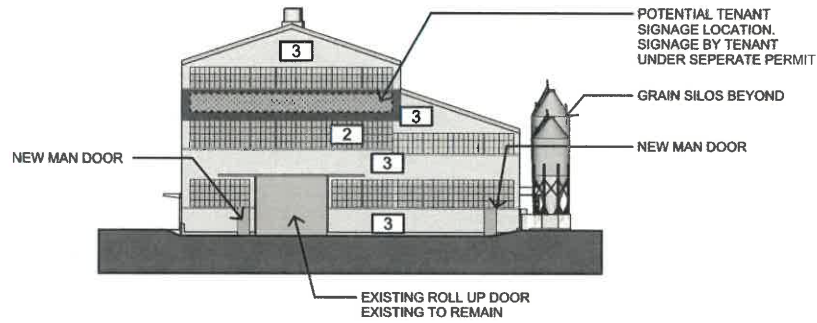
BLDG 19  
CLEMENT AVENUE  
ALAMEDA, CALIFORNIA

AUGUST 09, 2022  
CITY SUBMITTAL

WEST  
ELEVATION

A3.0

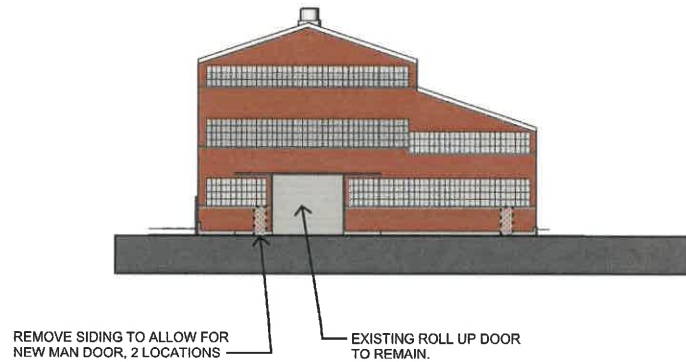




2

## PROPOSED SOUTH ELEVATION

SCALE: 1" = 30'-0"



4

## EXISTING SOUTH ELEVATION

SCALE: 1" = 30'-0"

1 (E) ROOF TO BE RE-ROOFED

2 (E) INDUSTRIAL SASH WINDOWS TO REMAIN. REPAIR, RE-GLAZE AND REPAINT AS REQUIRED.

FLAT BLACK RUSTOLEUM OR EQUAL

3 (E) METAL SIDING TO REMAIN. REPAIR AND RE-PAINT GREY AS APPROVED BY HAB. REPLACE DAMAGED OR MISSING SIDING TO MATCH EXISTING PROFILE.

SILVER GALVANIZED METAL PAINT RUSTOLEUM OR EQUAL

FLAT BLACK RUSTOLEUM OR EQUAL



F. Clay Fry Architect Inc.  
1164 Crescenta Court  
Lafayette, CA 94549  
925-765-2876  
clayfry@studiofcf.com

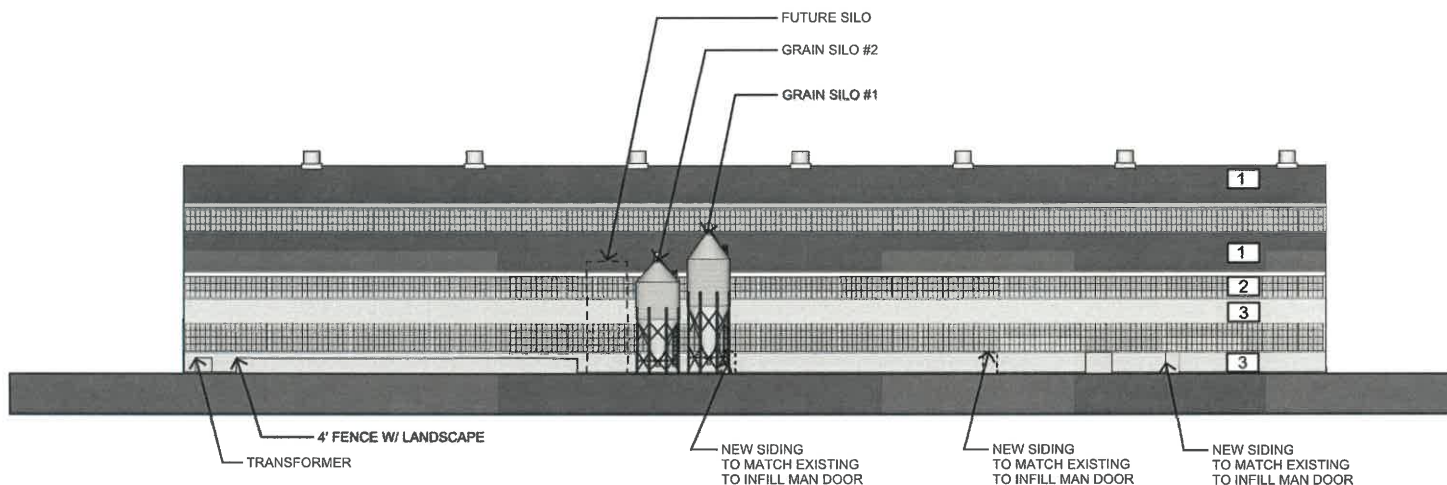


BLDG 19  
CLEMENT AVENUE  
ALAMEDA, CALIFORNIA

AUGUST 09, 2022  
CITY SUBMITTAL

SOUTH  
ELEVATION

A3.1



- 1 (E) ROOF TO BE RE-ROOFED
- 2 (E) INDUSTRIAL SASH WINDOWS TO REMAIN. REPAIR, RE-GLAZE AND REPAINT AS REQUIRED.

FLAT BLACK  
RUSTOLEUM OR EQUAL

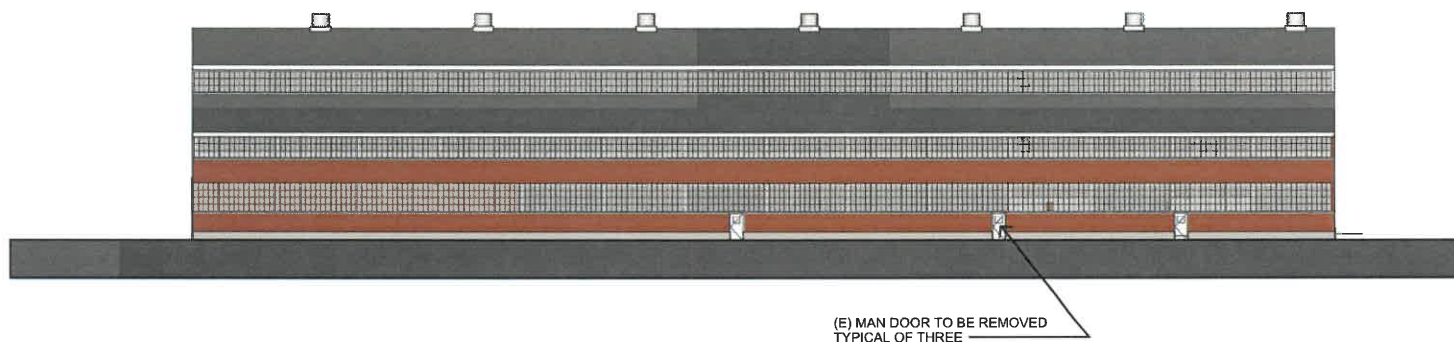
- 3 (E) METAL SIDING TO REMAIN. REPAIR AND RE-PAINT GREY AS APPROVED BY HAB. REPLACE DAMAGED OR MISSING SIDING TO MATCH EXISTING PROFILE.

SILVER GALVANIZED  
METAL PAINT  
RUSTOLEUM OR EQUAL

FLAT BLACK  
RUSTOLEUM OR EQUAL

1 PROPOSED EAST ELEVATION

SCALE: 1" = 30'-0"



2 EXISTING EAST ELEVATION

SCALE: 1" = 16'-0"



F. Clay Fry Architect Inc.  
1164 Crescenta Court  
Lafayette, CA 94549  
925-765-2876  
clayfry@studiofcf.com



BLDG 19  
CLEMENT AVENUE  
ALAMEDA, CALIFORNIA

AUGUST 09, 2022  
CITY SUBMITTAL

EAST  
ELEVATION

A3.2