

EXTERIOR PAINT GUIDELINES
FOR EXISTING BUILDINGS IN THE
NAS ALAMEDA HISTORIC DISTRICT

THE CITY OF ALAMEDA
May 7, 2015

TABLE OF CONTENTS

SHEET TITLE	PAGE NUMBER
General Guidelines.....	1
Four Functional Areas Map.....	2
Table of Colors - Operations and Shops Areas.....	3
Examples of Color Applications.....	4
Hangar Doors - Color Applications.....	5
Shops Areas - Color Applications.....	6

GENERAL GUIDELINES

OVERVIEW:

The proposed color scheme is intended to retain the historical integrity of the Alameda Naval Air Base. Designed in the Streamlined Moderne style, the architecture of the Naval Air Base exhibits the following characteristics in the Four Functional Areas (Fig. 1):

- Emphasis on the mass of the building;
- Emphasis on geometric forms;
- Simplified classical compositions;
- Stylized detailing;
- Symmetrical patterns;
- Colors vivid and in high contrast;
- Reduced applied decoration;
- Decorative composition as overall effect;
- Horizontality (grooves and lines in walls);
- Flat roof with coping;
- Rounded edges;
- Stark differentiation between base color and color of design features;

COLOR RECOMMENDATIONS

- Color Districts based on the four functional areas;
- Color as an architecture and graphic design element;
- Color to provide orientation and identity;
- Color to reinforce the architectural heritage;
- Hues, brightness, and saturation to differentiate elements;
- Same background color for all buildings except entry points;
- Contrast between background color and design elements;
- Coloring of architectural elements different for entry points;
- Accent coloring in door and window casings;
- Unique color within color district for access door.

DESIGN PRINCIPLES:

- Plastered surfaces (walls, ceilings, mouldings) to be painted using matt colors per the proposed color palette;
- Metallic surfaces (window mullions, hangar doors, metal doors, reglets, hardware, fastenings) to be painted using the metallic version of the matt colors per the proposed color palette;
- All buildings in the Operations and Shop Areas to be painted using the same off-white base color; (see page 4)
- Buildings in the Operation and Shops Areas featuring a podium/and or a recessed termination to be painted using one of the two gray options. Once a gray option has been picked, that building to be painted ONLY with that color in those architectural elements and the window mullions of the side elevations (see page 4);
- Hangar Doors in the Operation and Shops Areas to be painted using one of the four color options. Once a color option has been picked, the entry doors of the side elevations of that building to be painted with that SAME color (see page 4);
- New energy efficient low-e clear dual glass panes can be installed to a full row of windows for the entire length of the impacted facade;
- Copper roofs and flashing to remain as patina of the buildings;
- Color palette in Administrative Core and Residential Area to remain as existing;

MAIN ARCHITECTURAL ELEMENTS:

- BACKGROUND COLOR
- HORIZONTAL BANDS
- HANGAR DOORS
- COPING
- ROOF TERMINATION
- HORIZONTAL WINDOWS
- PUNCHED WINDOWS
- EXTERIOR STAIRS
- CANOPIES
- CEILINGS' UNDERSIDE

FOUR
FUNCTIONAL
AREAS

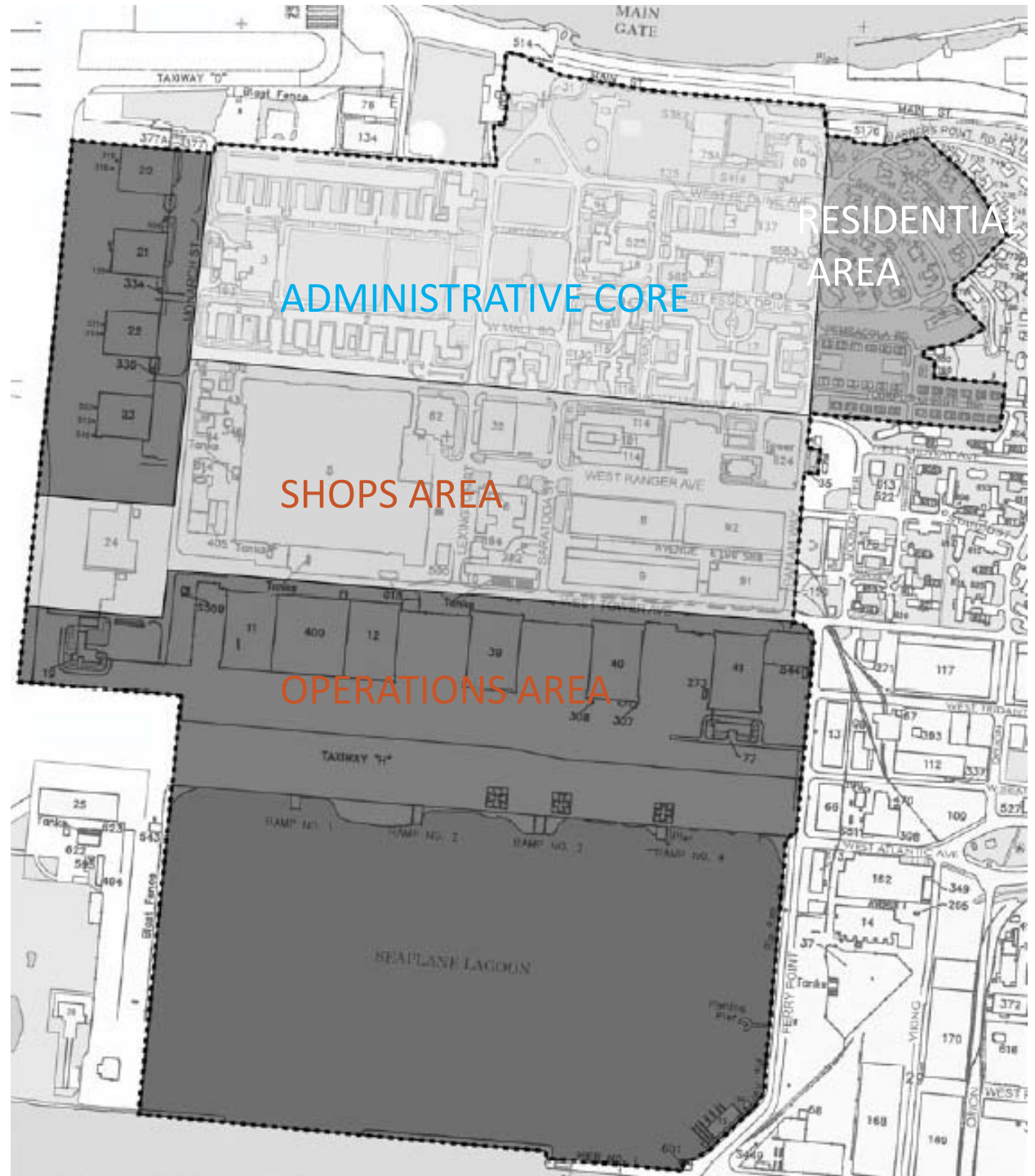
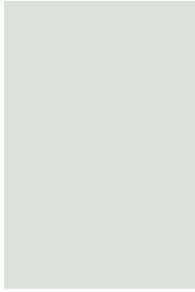
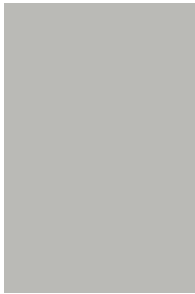


Fig. 1

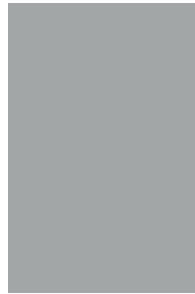
TABLE OF COLORS



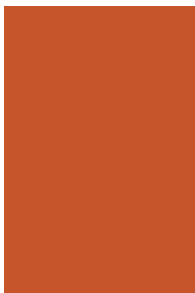
SW 7063 Nebulous White
R-222 | G-224 | B-220
#DEE0DC



SW 7065 Argos
R-185 | G-187 | B-182
#B9BBB6



SW 7073 Network Gray
R-161 | G-167 | B-168
#A1A7A8



SW 6883 Raucous Orange
R-198 | G-84 | B-41
#C65429



SW 6870 Ablaze
R-196 | G-68 | B-61
#C4443D



SW 6608 Rave Red
R-165 | G-56 | B-48
#A53830



SW 6636 Husky Orange
R-189 | G-98 | B-58
#BD623A

OPERATIONS AND SHOP AREAS

BASE | ONE OPTION

SW 7063 Nebulous White R-222 | G-224 | B-220 #DEE0DC

PEDESTAL AND RECESSED TERMINATION | TWO OPTIONS

SW 7065 Argos R-185 | G-187 | B-182 #B9BBB6

SW 7073 Network Gray R-161 | G-167 | B-168 #A1A7A8

HANGAR DOORS | FOUR OPTIONS

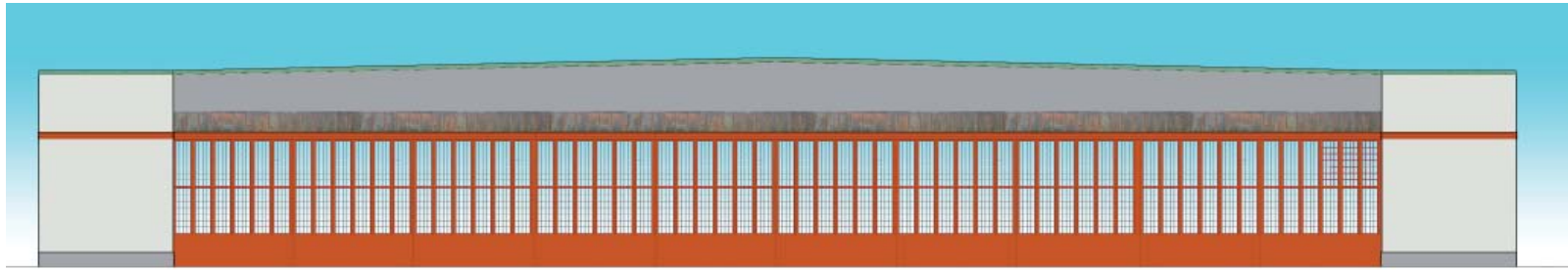
SW 6883 Raucous Orange R-198 | G-84 | B-41 #C65429

SW 6870 Ablaze R-196 | G-68 | B-61 #C4443D

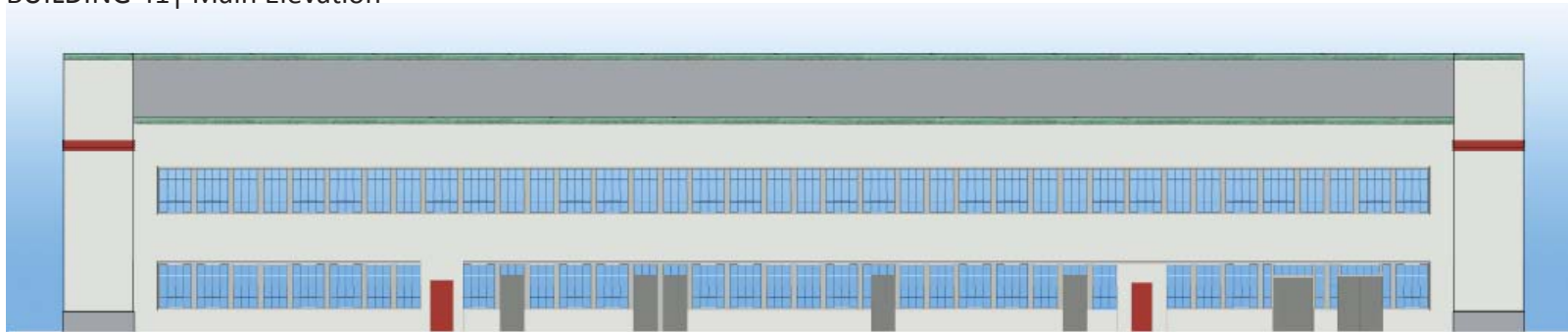
SW 6608 Rave Red R-165 | G-56 | B-48 #A53830

SW 6636 Husky Orange R-189 | G-98 | B-58 #BD623A

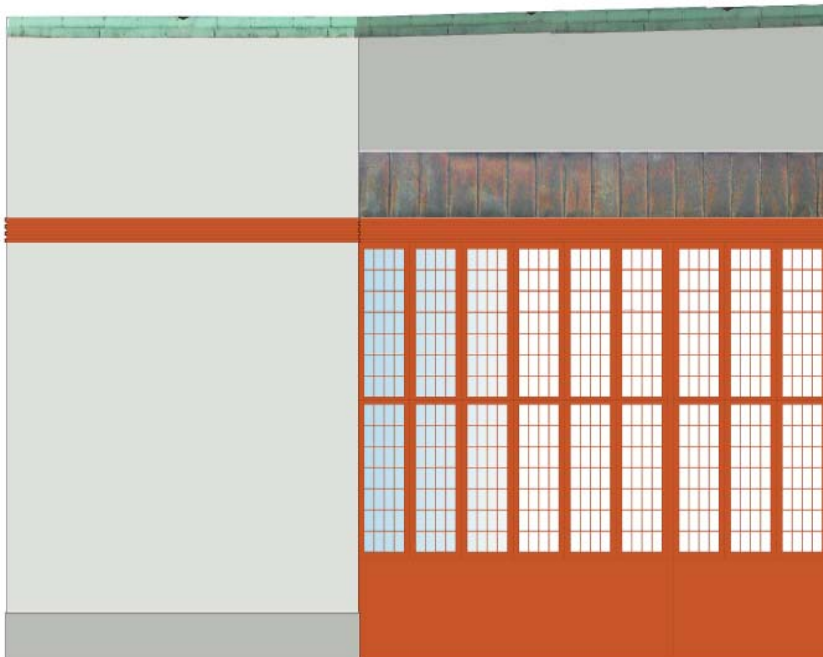
EXAMPLES OF COLOR APPLICATION



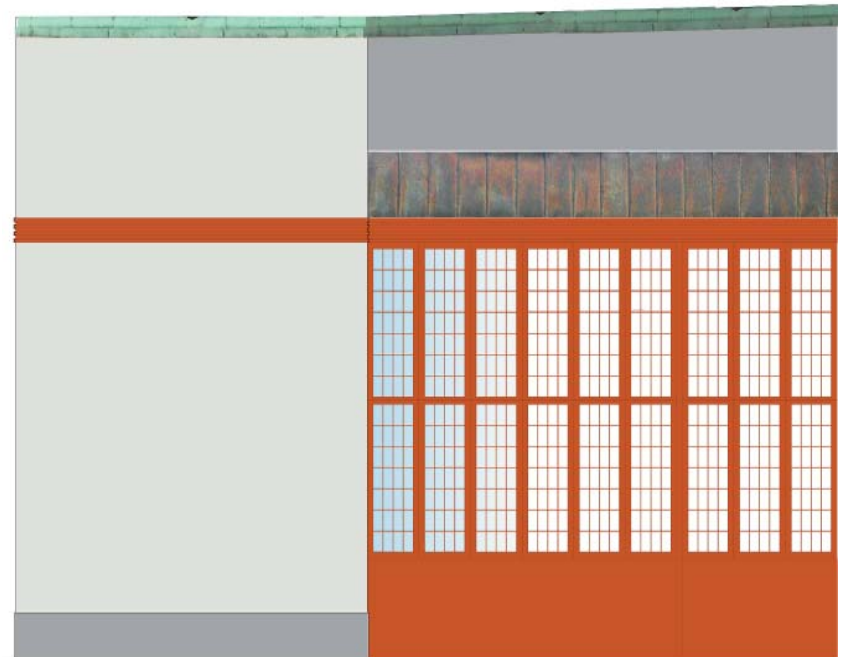
BUILDING 41 | Main Elevation



BUILDING 41 | Side Elevation



BUILDING 41 | Detail Main Elevation. Color: #B9BBB6
PEDESTAL AND RECESSED TERMINATION

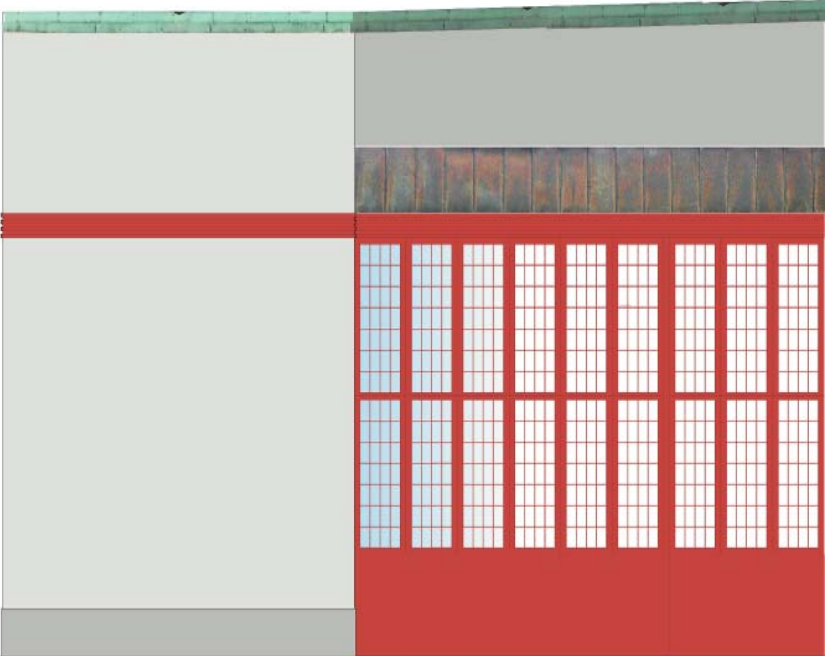


BUILDING 41 | Detail Main Elevation. Color: #A1A7A8
PEDESTAL AND RECESSED TERMINATION

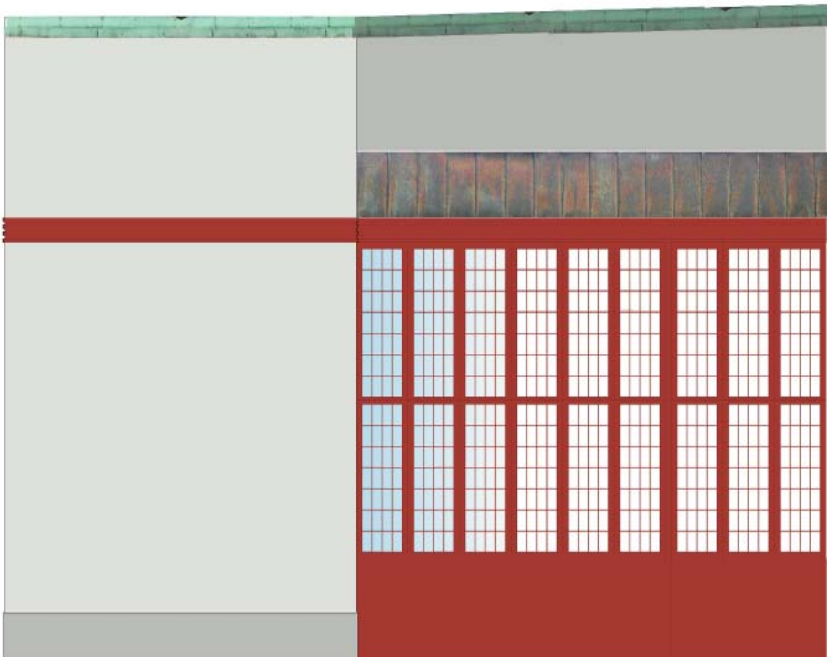
HANGAR DOORS | COLOR APPLICATIONS



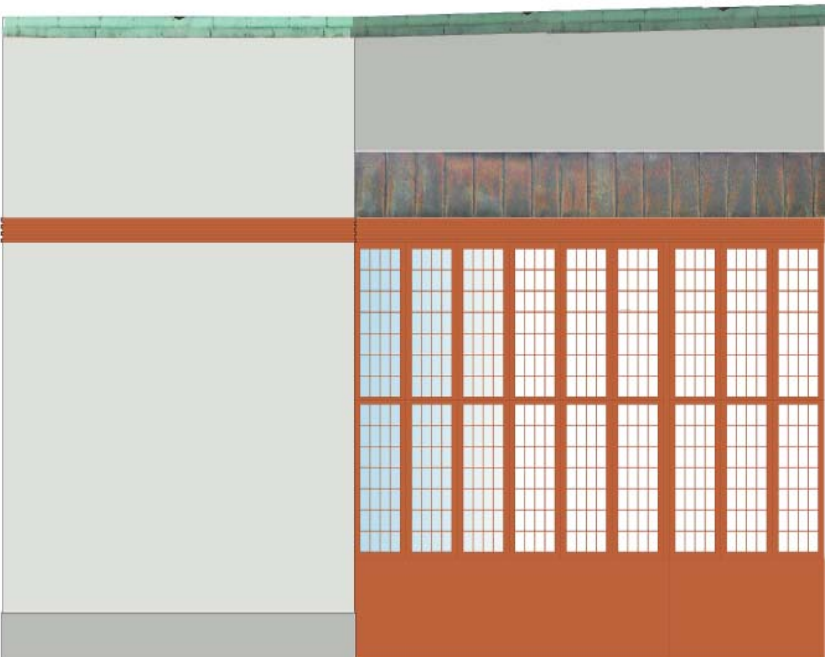
BUILDING 41 | Detail Main Elevation. Color: #C65429



BUILDING 41 | Detail Main Elevation. Color: #C4443D



BUILDING 41 | Detail Main Elevation. Color: #A53830

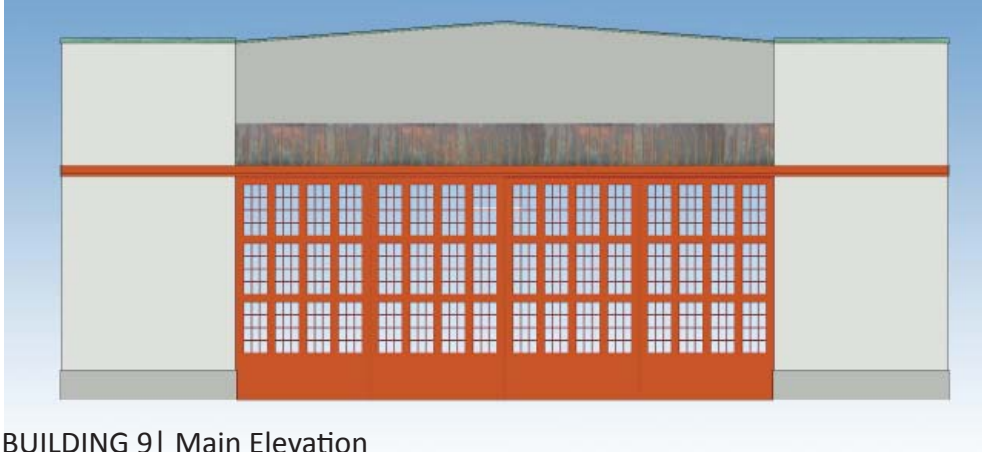


BUILDING 41 | Detail Main Elevation. Color: #BD623A

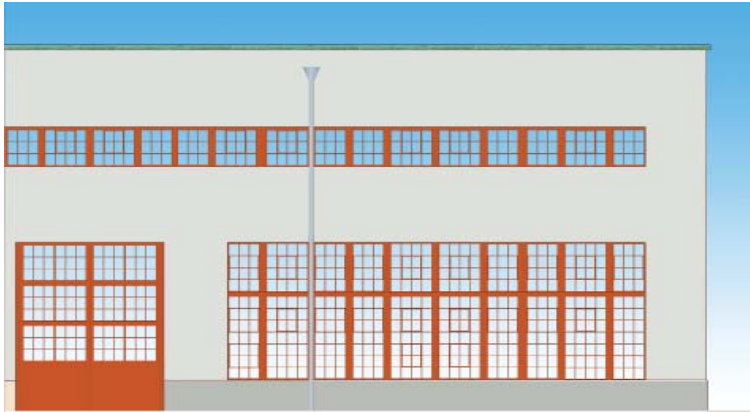
SHOPS AREAS | COLOR APPLICATIONS



BUILDING 9 | Side Elevation



BUILDING 9 | Main Elevation



BUILDING 9 | Detail Side Elevation