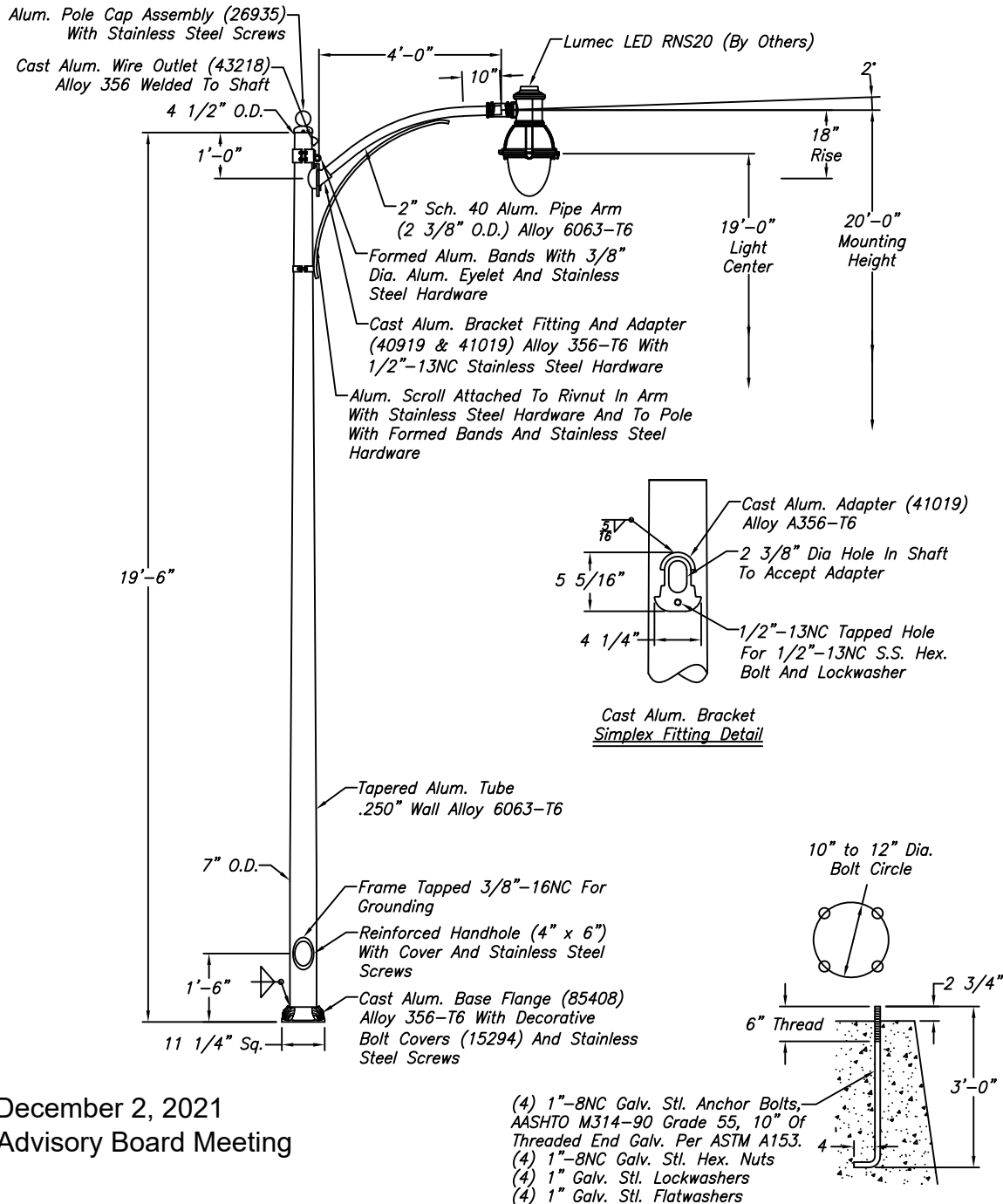


Notes:

- 1) Pole Designed To Meet AASHTO, 2013 Edition (Excluding Breakaway)
For A 90 mph Wind Velocity When Supporting A Luminaire With A
Maximum Size Of 3.6 ft² E.P.A And 75 lbs.
- 2) Overhead Wiring Specifications:
 - Wt./ft.: 0.049 lbs./ft.
 - Span Length: 150' Maximum
 - Sag: 2.253'
- 3) The Pole Assembly Shall Be Powder Coated With An RAL Finish Which
Is To Be Chosen By Customer.



B104376

Exhibit 2
Item 7-B, December 2, 2021
Historical Advisory Board Meeting

Ref: 26829, 33862, & 28694

WARNING: DO NOT INSTALL LIGHTING POLES WITHOUT LUMINAIRES

| NO. | REVISIONS | DATE |
|-----|--|-------|
| 1 | Shaft Height Was 20' (tnb) | 4/20 |
| 2 | Added Bolt Covers And Wire Hook & Outlet (tnb) | 10/20 |
| | | |
| | | |
| | | |
| | | |

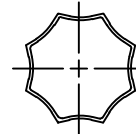
hapco

Abingdon, Va.

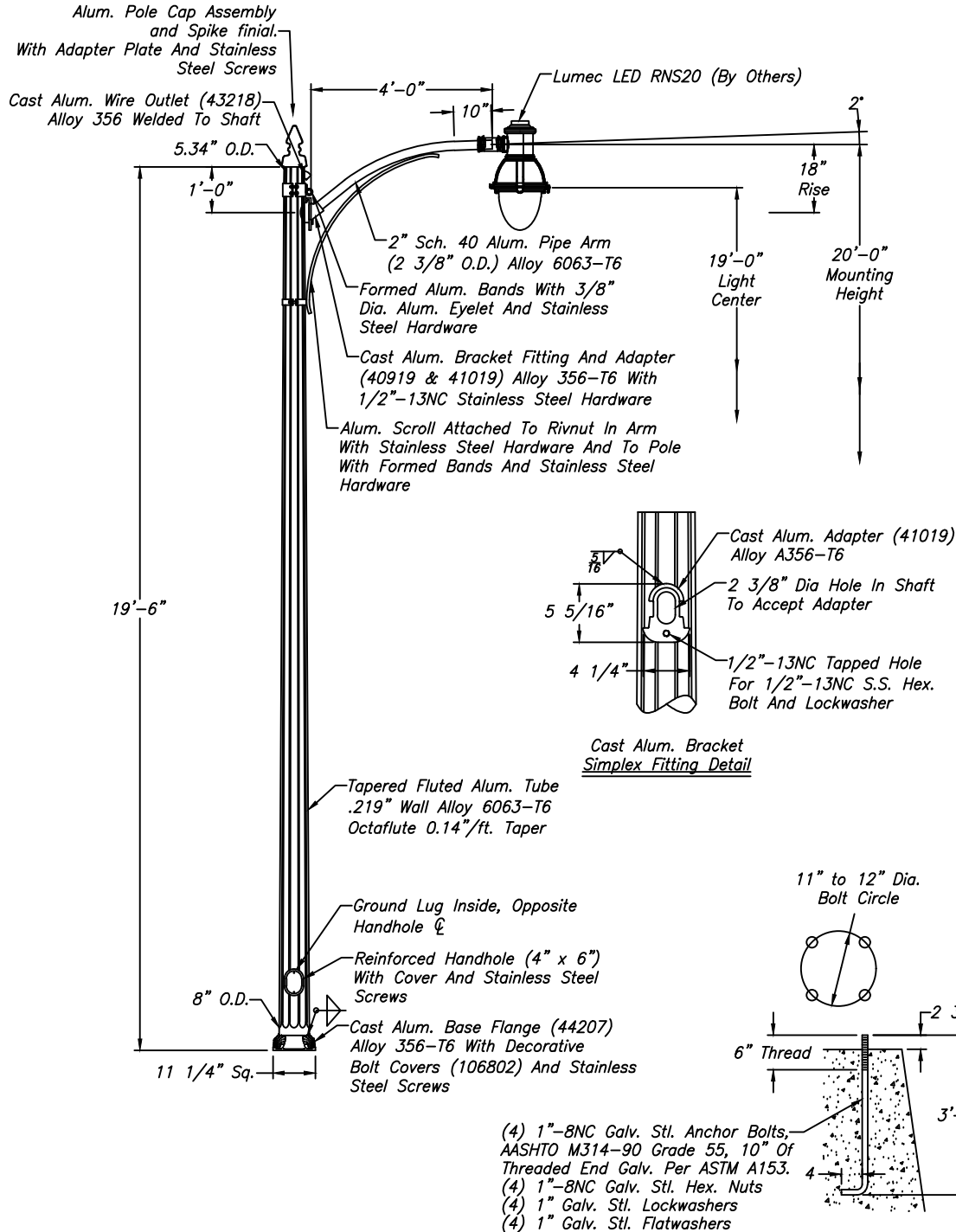
| | |
|----------------------------|-----------------|
| TITLE 20' MH LIGHTING POLE | |
| CUSTOMER City of Alameda | |
| SCALE 24 | DATE 04/01/2020 |
| BY TNB | DWG. NO. |
| CHK'D | B104376 |

Notes:

- 1) Pole Designed To Meet AASHTO, 2013 Edition (Excluding Breakaway)
For A 90 mph Wind Velocity When Supporting A Luminaire With A
Maximum Size Of 3.6 ft² E.P.A And 75 lbs.
- 2) Overhead Wiring Specifications:
 - Wt./ft.: 0.049 lbs./ft.
 - Span Length: 150' Maximum
 - Sag: 2.253'
- 3) The Pole Assembly Shall Be Powder Coated With An RAL Finish Which
Is To Be Chosen By Customer.



Cross Section
Of Flutes



Ref: 104376 & 26762

WARNING: DO NOT INSTALL LIGHTING POLES WITHOUT LUMINAIRES

| NO. | REVISIONS | DATE |
|-----|-----------|------|
| | | |
| | | |
| | | |
| | | |
| | | |
| | | |
| | | |

hapco
Abingdon, Va.

| | |
|----------------------------|-----------------|
| TITLE 20' MH LIGHTING POLE | |
| CUSTOMER City of Alameda | |
| SCALE 24 | DATE 07/20/2021 |
| BY TNB | DWG. NO. |
| CHK'D | B106937 |

B106937