

TC I 2421
BLANDING LLC
2018-244054 O.R.
APN: 070-0195-015

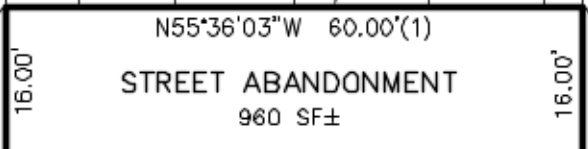
TC I 2421
BLANDING LLC
2018-244054 O.R.
APN: 070-0196-023

19 MAPS 60

12' PUBLIC
UTILITY EASEMENT
9171 O.R. 247

10' SEWER AND STORM
DRAIN EASEMENT
9171 O.R. 247

EVERETT STREET
(CLOSED AND
ABANDONED)
9171 O.R. 247



TC I 2421
BLANDING LLC
2018-244054 O.R.
APN: 070-0195-003

6 MAPS 12

N55°36'03"W 60.00'

EVERETT STREET
(60' WIDE PUBLIC RIGHT OF WAY)

CAL VITA LLC
2003-215257 O.R.
APN: 070-0196-022

TC I 2421 BLANDING LLC
2018-244054 O.R.
APN: 070-0195-004

(N34°23'08"E 116.00')(1)
N34°24'00"E 116.00'

100.00'
N34°24'00"E 116.00'

LEGEND:

- STREET ABANDONMENT
- SUBJECT PROPERTY LINE
- ADJOINER OR RIGHT OF WAY LINE
- ASSESSOR'S PARCEL LINE
- EASEMENT LINE
- EVERETT STREET ABANDONMENT
- O.R. OFFICIAL RECORD
- (100.00')(1) DENOTES RECORD DATA PER 9171 O.R. 247, RESOLUTION NO. 5949

N55°36'03"W

N55°36'03"W

BLANDING AVENUE
(60' WIDE PUBLIC RIGHT OF WAY)

CITY OF ALAMEDA
COUNTY OF ALAMEDA
STATE OF CALIFORNIA EXHIBIT "B"



1646 N CALIFORNIA BLVD
SUITE 400
WALNUT CREEK, CA 94596
925-940-2200
925-940-2299 (FAX)

Subject PLAT TO ACCOMPANY
ABANDONMENT DESCRIPTION
Job No. 20191315-51
By MLH Date 09/25/20 Chkd PK
SHEET 1 OF 1