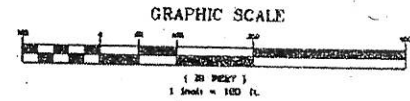


VICINITY MAP  
NO SCALE

## BOUNDARIES OF MAINTENANCE ASSESSMENT DISTRICT NO.1

CITY OF ALAMEDA, COUNTY OF ALAMEDA, STATE OF CALIFORNIA  
DATE: MAY 2002 SCALE 1"=100'  
BELLUCCI & ASSOCIATES, INC.  
CONCORD



### LEGEND

— BOUNDARY LINE OF PROPOSED MAINTENANCE ASSESSMENT DISTRICT NO.1

FOR THE PARTICULARS AND LINES OF DIMENSIONS OF THE ASSESSOR'S PARCEL NUMBERS REFERENCES IS MADE TO MARINA COVE TRACT MAP NO 7170 ON FILE WITH THE CITY ENGINEER, CITY OF ALAMEDA

FILED IN THE OFFICE OF THE CITY CLERK OF THE CITY OF ALAMEDA, STATE OF CALIFORNIA, THIS \_\_\_\_\_ DAY OF \_\_\_\_\_, 200\_\_.

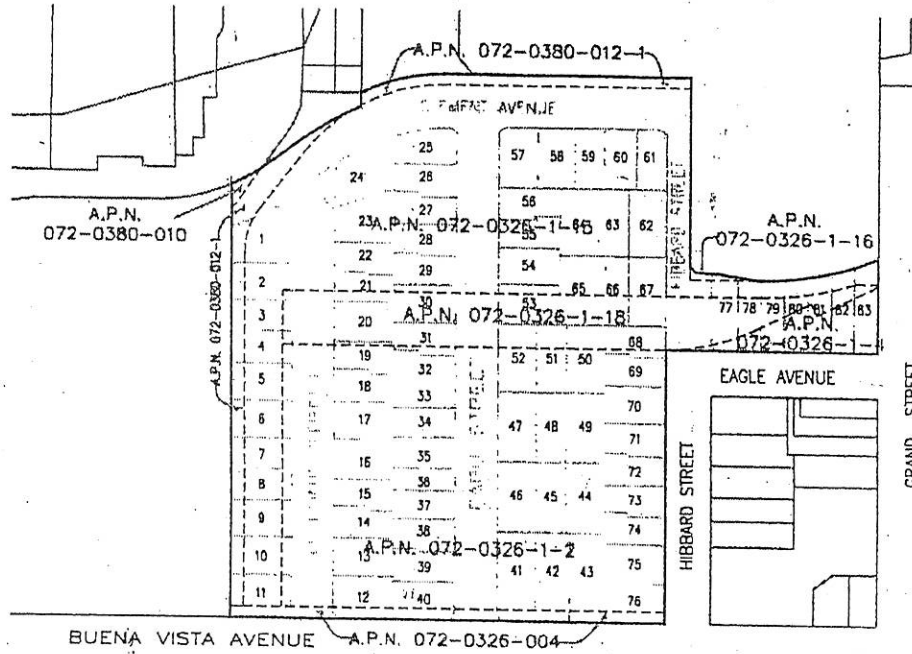
\_\_\_\_\_  
LARA WEISGER, CITY CLERK

I HEREBY CERTIFY THAT THE WITHIN MAP SHOWING PROPOSED BOUNDARIES OF CITY OF ALAMEDA MAINTENANCE ASSESSMENT DISTRICT NO. 1 (MARINA COVE TRACT 7170), COUNTY OF ALAMEDA, STATE OF CALIFORNIA, WAS APPROVED BY THE CITY COUNCIL OF THE CITY OF ALAMEDA AT A REGULAR MEETING THEREOF HELD ON THE DAY OF \_\_\_\_\_, 200\_\_ BY ITS RESOLUTION NO. \_\_\_\_\_

\_\_\_\_\_  
LARA WEISGER, CITY CLERK

FILED THIS \_\_\_\_\_ DAY OF \_\_\_\_\_, 200\_\_ AT THE HOUR OF \_\_\_\_\_ O'CLOCK \_\_\_\_\_, IN BOOK \_\_\_\_\_ OF MAPS OF ASSESSMENT AND COMMUNITY FACILITIES DISTRICTS AT PAGE \_\_\_\_\_ IN THE OFFICE OF THE COUNTY RECORDER IN THE COUNTY OF ALAMEDA, STATE OF CALIFORNIA.

\_\_\_\_\_  
COUNTY RECORDER  
COUNTY OF ALAMEDA  
STATE OF CALIFORNIA



TRACT 7170