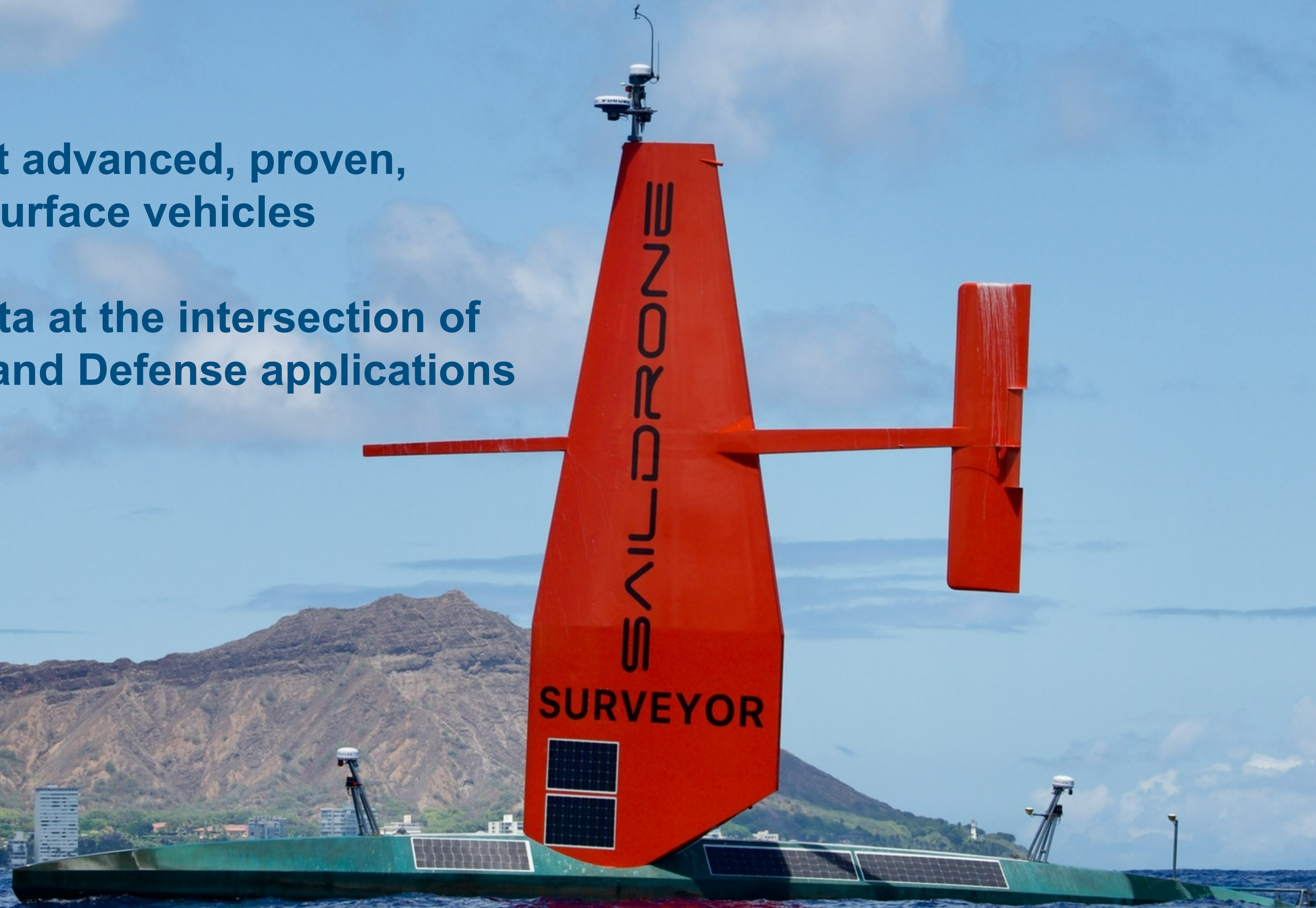


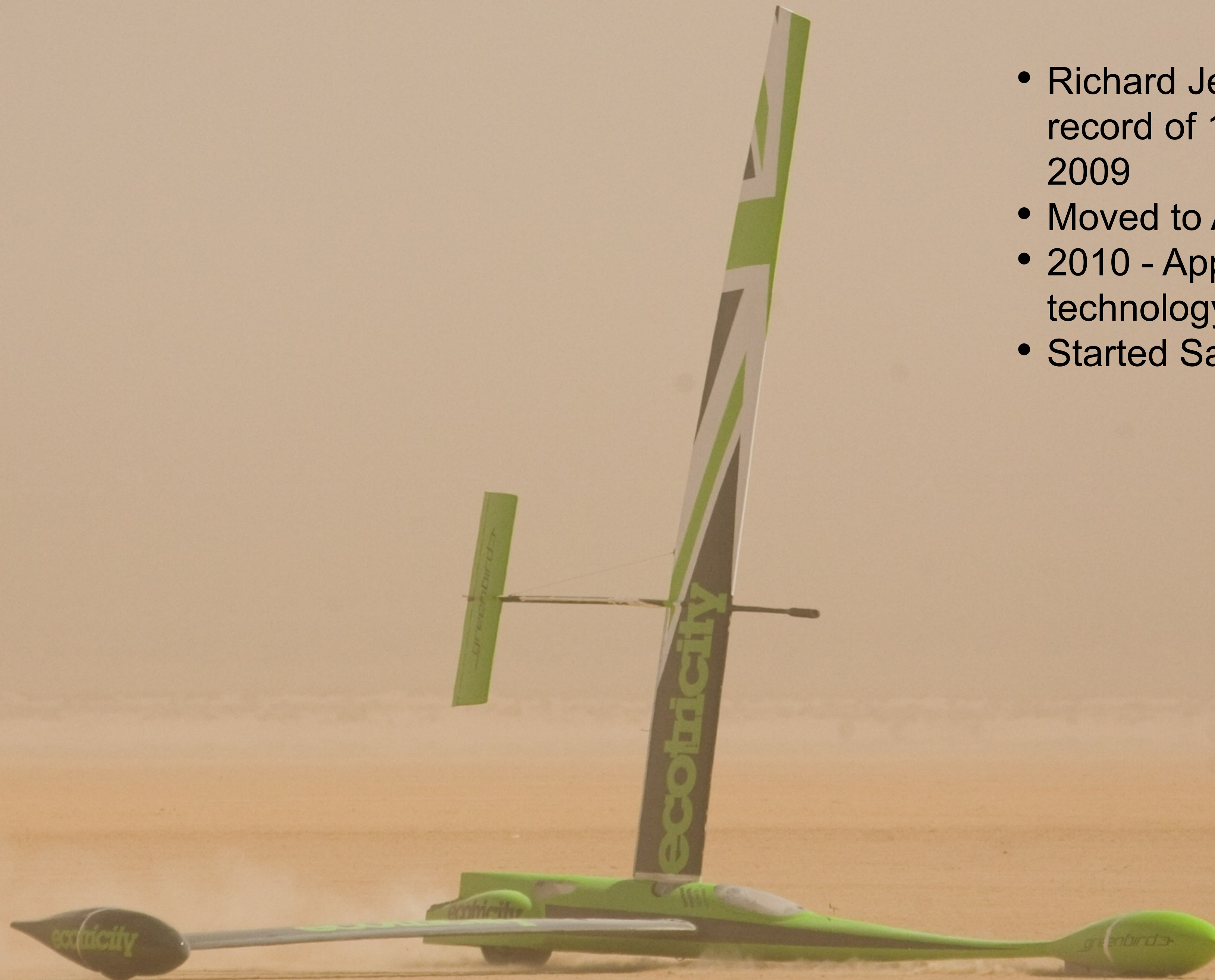


SAILDRONE

The world's most advanced, proven,
unmanned surface vehicles

Providing critical data at the intersection of
Climate, Commercial and Defense applications





- Richard Jenkins set a land speed record of 126 mph in Nevada in 2009
- Moved to Alameda in 2009
- 2010 - Applied patented wing technology to Ocean research
- Started Saildrone in 2013

Harnessing Renewable Power

Near zero carbon footprint

Saildrone harnesses wind and solar power to enable access to any part of the world's oceans, at any time of year

Products

Sector

OCEAN DATA

Weather, Climate,
Conservation

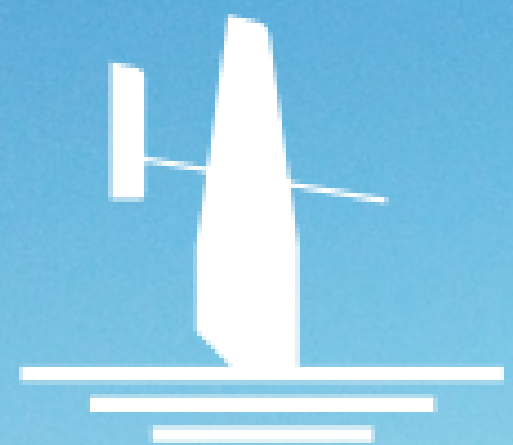
BATHYMETRY

Mapping, Natural
resources, Offshore Wind

MDA / ISR

Homeland Security,
Defense





SAILDRONE



1050 W Tower Ave



About Saildrone

- HQ in Alameda, California.
- Remote offices in Florida, Mass. & Washington DC
- Control centers in US, UK and Australia
- 150 Employees
- Private company
- VC Backed - \$200m raised to date
- 100 + people to hire in the next 12 months



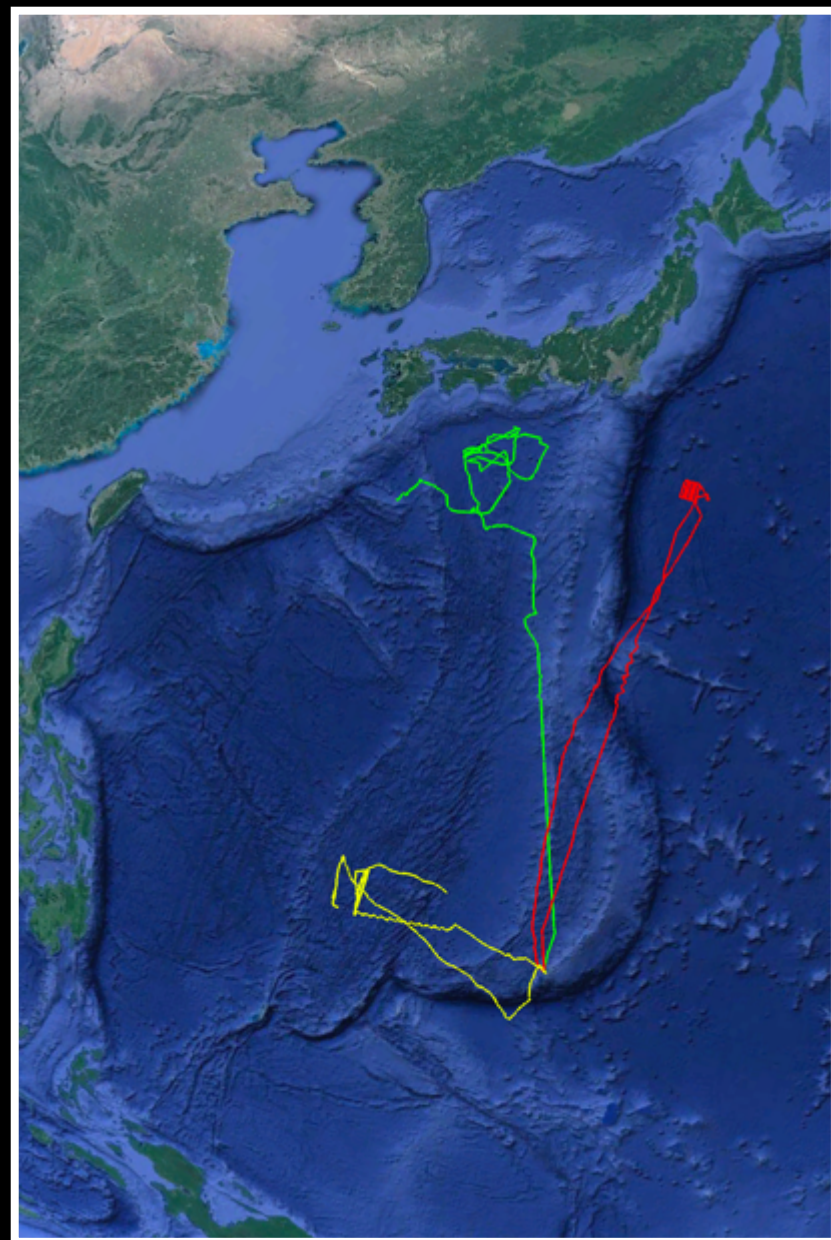
Proven Technology

Global operations

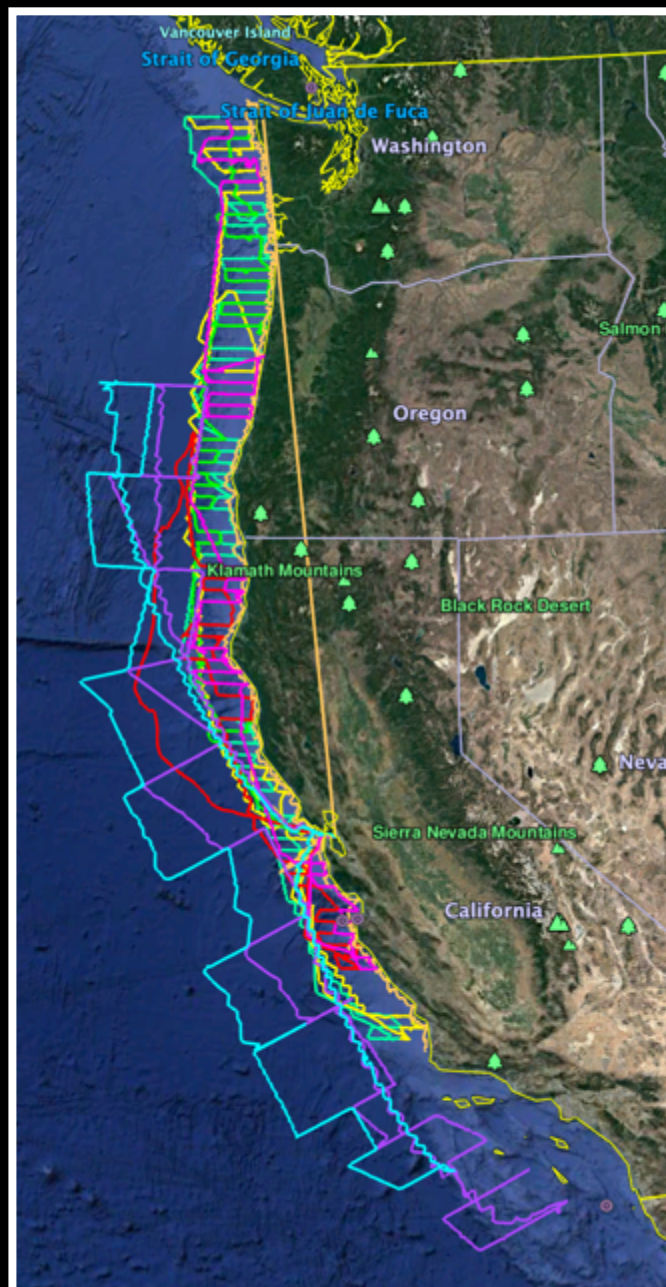
> 750,000 NM Sailed

> 17,000 Days at Sea

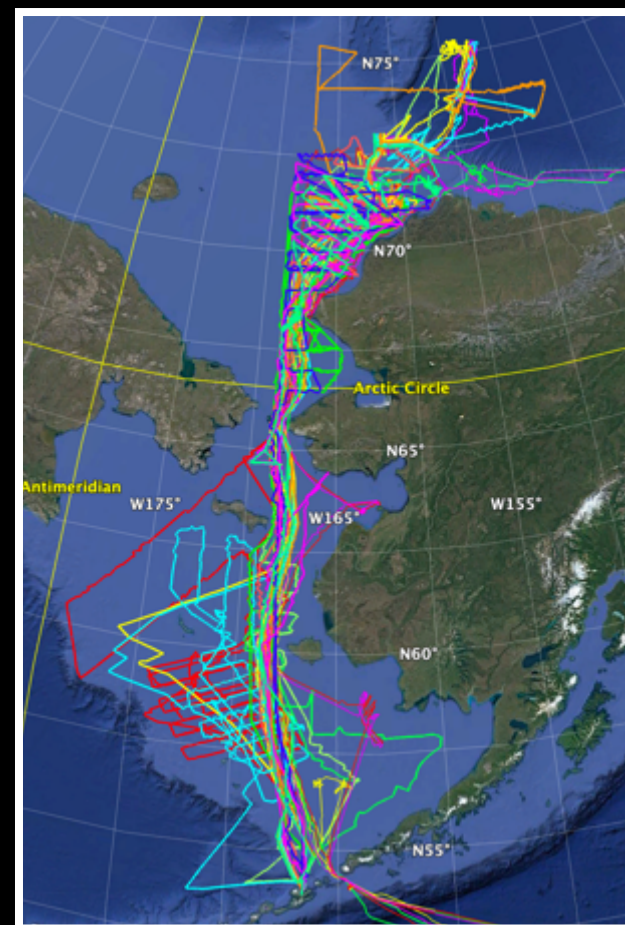
Guam - Japan



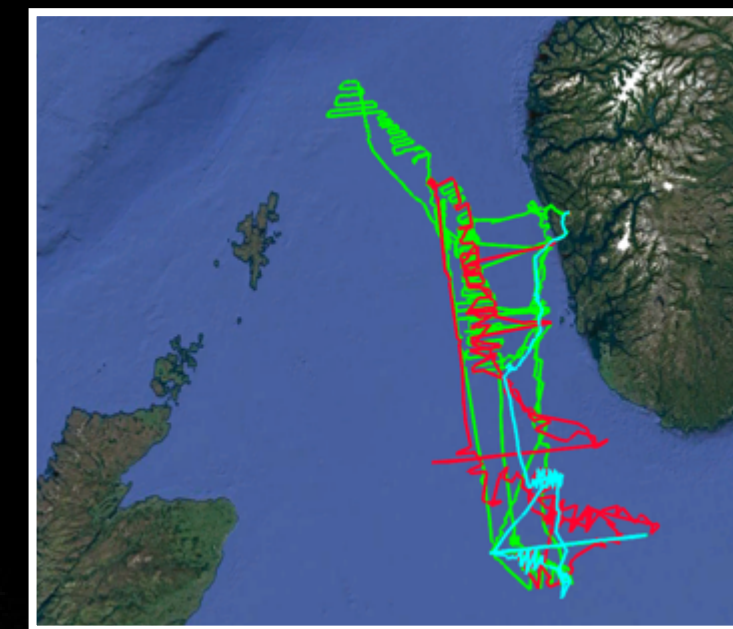
West Coast USA



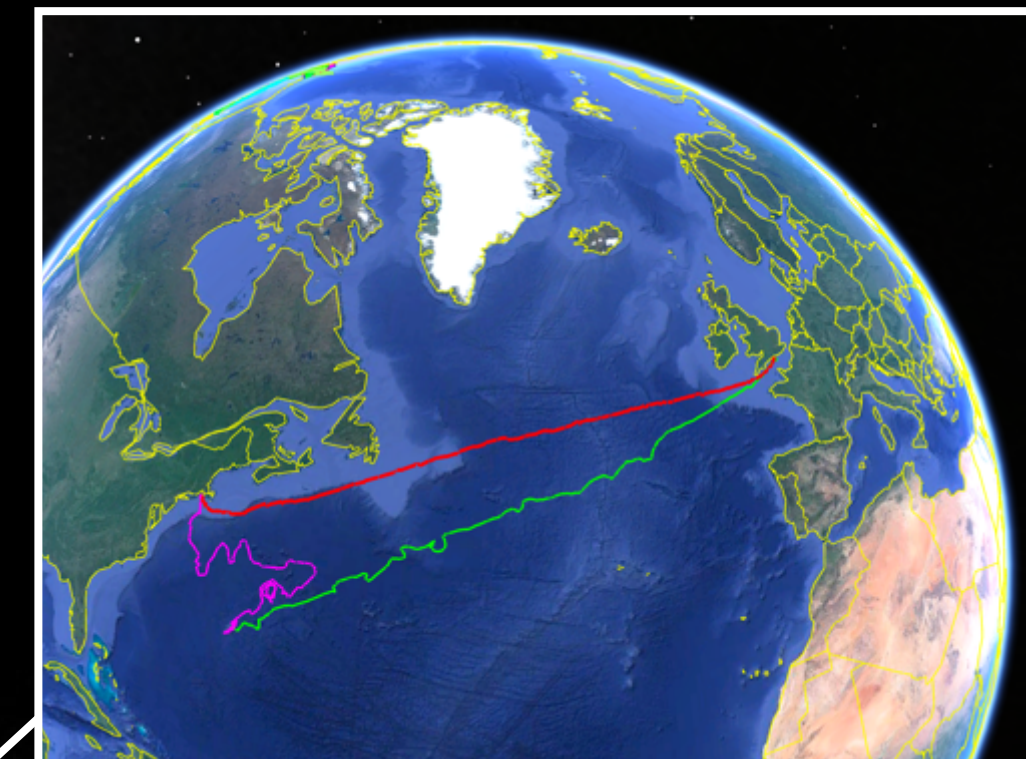
Arctic



North Sea



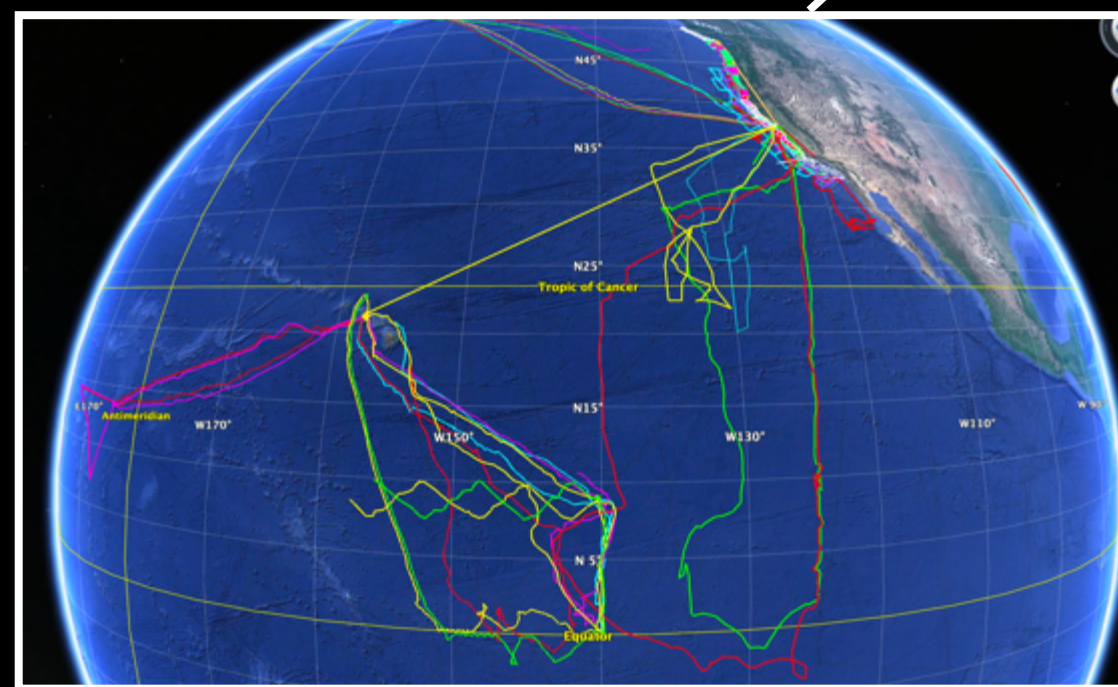
Transatlantic



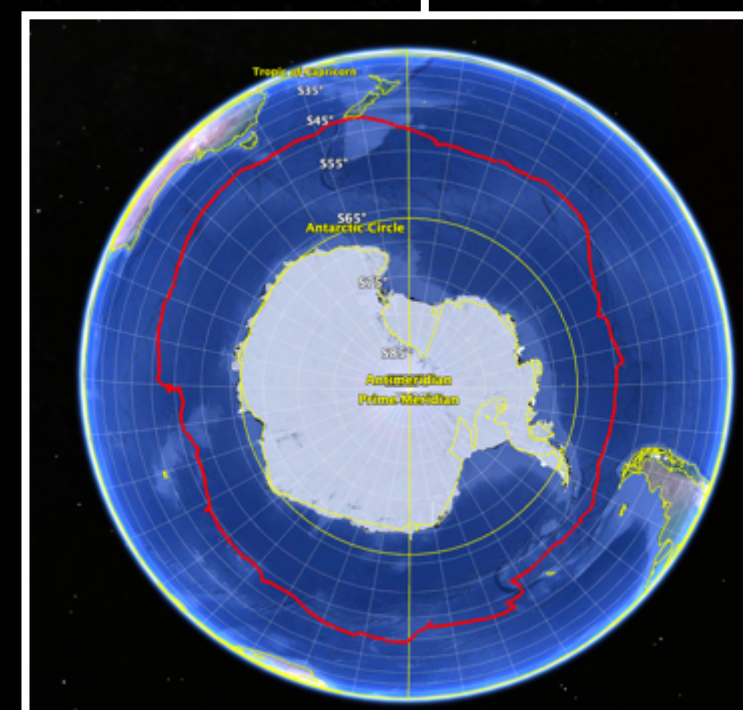
Atlantic to Med



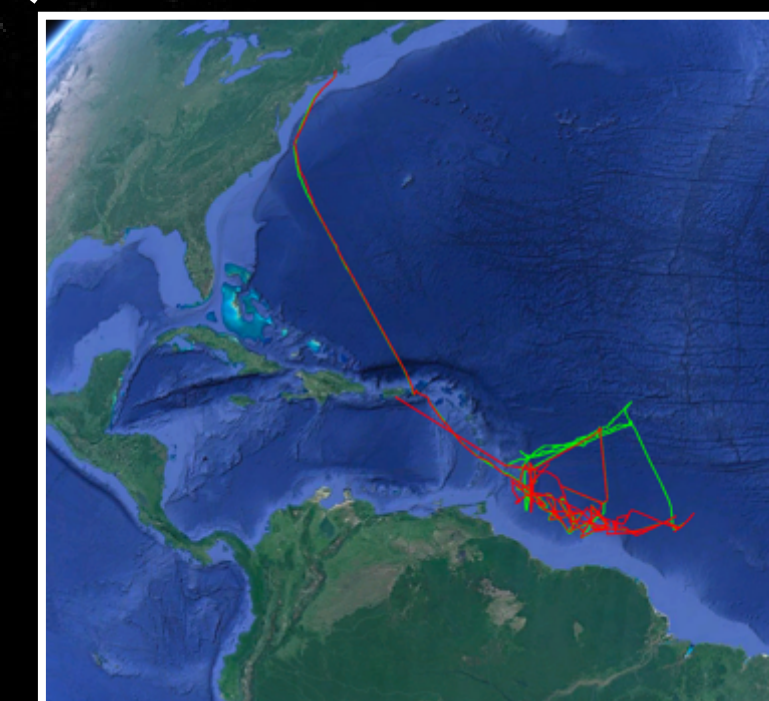
Tropical Pacific



Antarctic Circumnavigation



Barbados



SAILDRONE SUPPORTING SCIENCE AND OCEAN HEALTH

Collaborating with the world's leading ocean scientific organizations

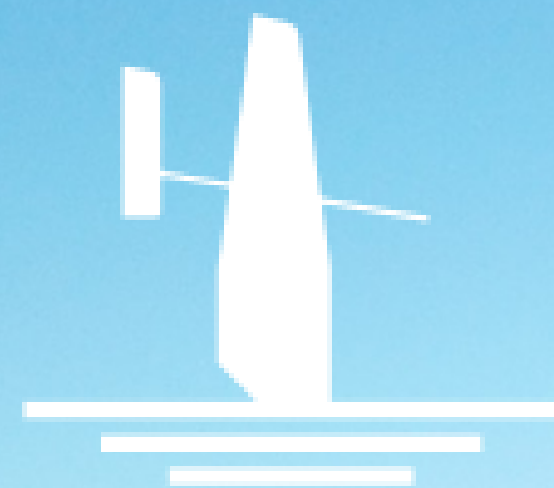
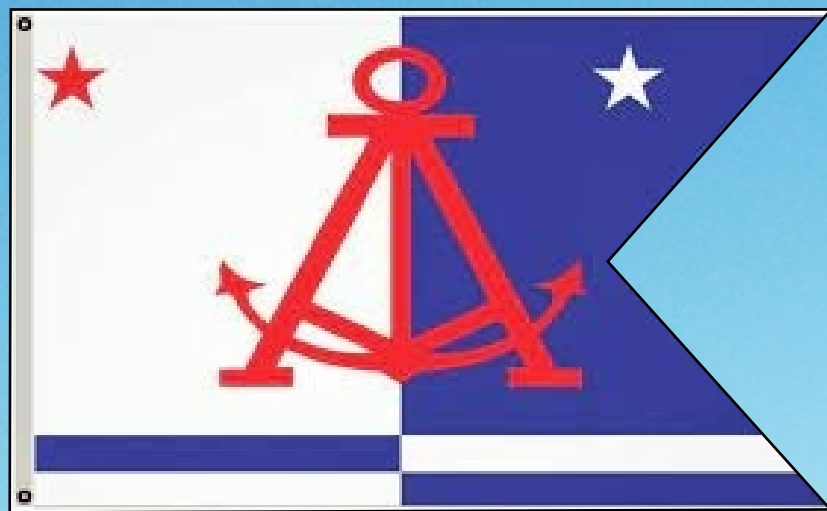




SAILDRONE



SAILDRONE FOR HOMELAND SECURITY



SAILDRONE

Building 19

Drone
Deployment

1050 W Tower Ave