

Alameda Point:  
Enabling *Daily Space*  
*Delivery*

July 12, 2022



JUDITH RIPKA



JUDITHRIPKA.COM

Absen

Nasdaq



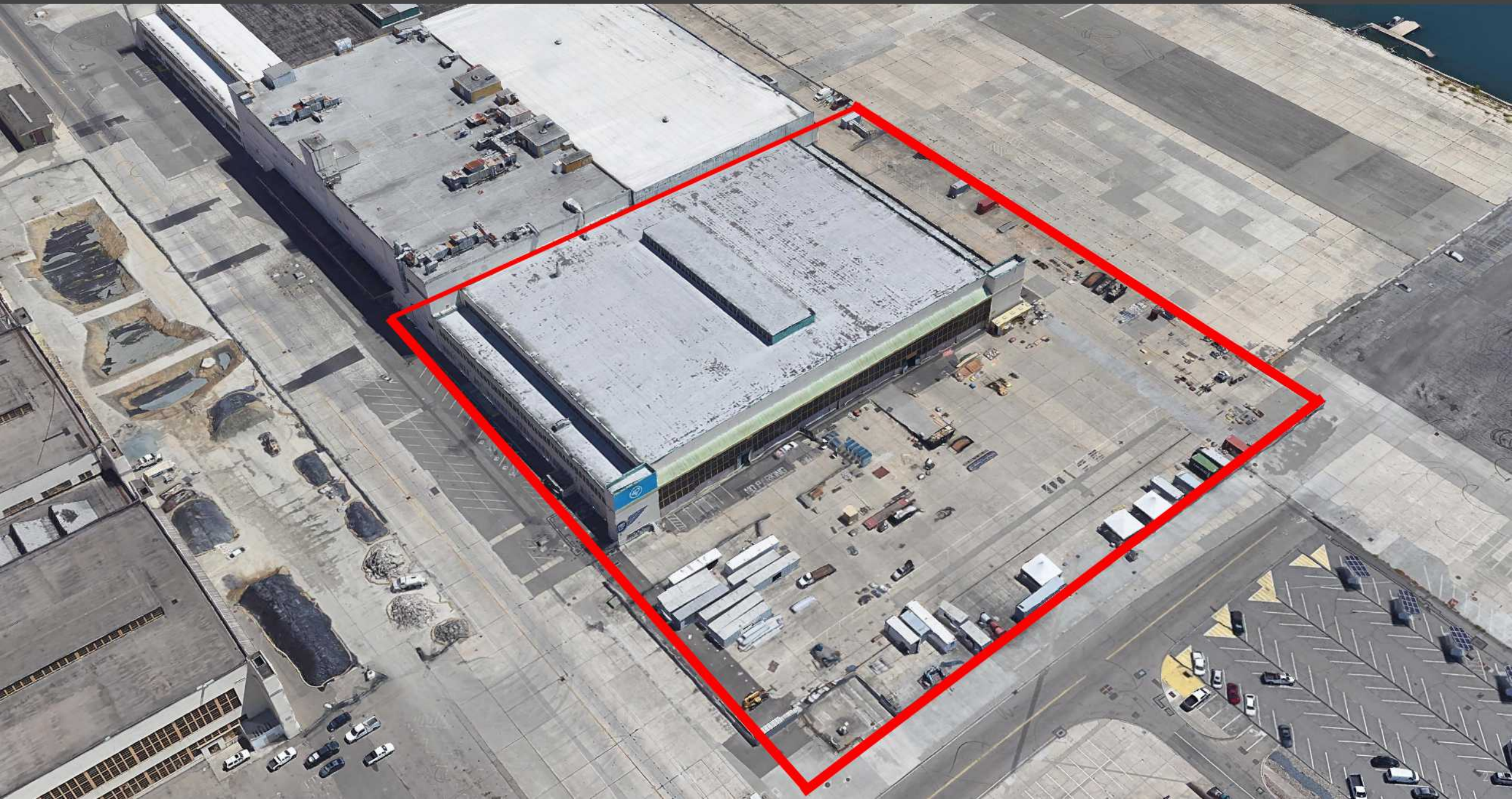
IX | NOW STREAMING

BAD VEGAN  
FAME. FRAUD. FUGITIVES.



Late  
film  
hit  
Listen







# A PROVEN PARTNER

The reuse of Alameda's historical aerospace assets has uniquely aligned with Astra's design/build/test culture.

**2017-2022**

ASTRA WORKED WITH REGULATORS TO REUSE AND REHABILITATE THE NAVY'S DEFUNCT ENGINE REFURBISHMENT SPACES AND WAREHOUSES FOR R&D, DEVELOPMENT, AND LIMITED PRODUCTION.

ENABLED PATHWAY TO SUCCESSFUL LAUNCH AND PUBLIC OFFERING.





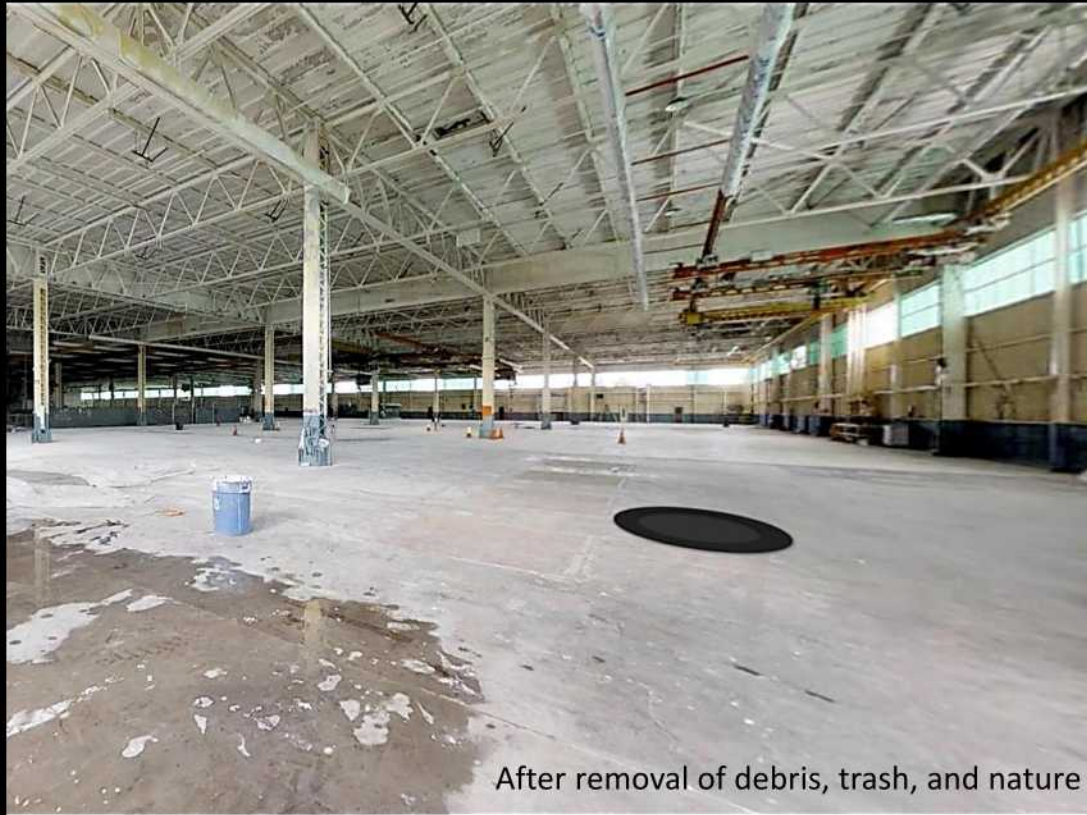
## 1690 ORION STREET: REUSE & REVITALIZATION (BEFORE AND AFTER)



**Astra's first home:** Required costly clean-up and improvements.



## 1900 SKYHAWK STREET: REUSE & REVITALIZATION (BEFORE AND AFTER)



**Today, Astra occupies more than 200,000sf of rehabilitated space at Alameda Point.**



# STATE SUPPORT





