



Date: June 14, 2022

Quotation for City of Alameda

Quote No:632157-00

Prepared For:	Forrest Heiderick	Quote No:	632157-00
	City of Alameda	iQuote No:	23784-4
	2040 Grand Avenue	Sales Person:	Nolan Stark
	Alameda, CA 94501		nolan.stark@turfstar.com
			(510) 342-4708

Quoted at Sourcewell Pricing. City of Alameda Member Number #926. Westward Industries Sourcewell Contract Number #122220-WWI

Summary

Configuration Name	Qty	Unit Price	Sub Total	Sales Tax	Total
010-GO-4 Sliding Door EV 20.2KW - Up to 100 Miles	3	\$44,440.25	\$133,320.75	\$14,332.02	\$147,652.77
020-Custom ALPR provided by TDS installed by WWI Qty 3	1	\$4,500.00	\$4,500.00	\$483.75	\$4,983.75
Totals:			\$137,820.75	\$14,815.77	\$152,636.52



Date: June 14, 2022

Quotation for City of Alameda

Quote No:632157-00

Configuration Product Details 010-GO-4 Sliding Door EV 20.2KW - Up to 100 Miles

Model	Product Description	Qty	Unit Price	Extended	Sales Tax	Total
7-003-307-72P	Air Conditioning	3	\$2,935.00	\$8,805.00	\$946.54	\$9,751.54
1-96-039P	Radio w/Speakers, and Bluetooth	3	\$577.50	\$1,732.50	\$186.25	\$1,918.75
6-880-018P	Full Length Rear View Mirror	3	\$158.00	\$474.00	\$50.96	\$524.96
6-880-009P	Rear Parking Safety Sensors w/ Audible Alarm	3	\$520.00	\$1,560.00	\$167.70	\$1,727.70
1-96-024P	Extra Set of Keys	3	\$36.75	\$110.25	\$11.85	\$122.10
1-96-003P	Back Up Alarm	3	\$205.00	\$615.00	\$66.12	\$681.12
7-944-003P	Hella LED Amber Roof Light - installed	3	\$730.00	\$2,190.00	\$235.43	\$2,425.43
7-965-013P	J 1772 Portable Charging Cord 120V	3	\$367.00	\$1,101.00	\$118.36	\$1,219.36
601-831-010/011P	Inside Door Locks	3	\$205.00	\$615.00	\$66.12	\$681.12
1-86-114P	Nerf Bar Front Bumper	3	\$404.00	\$1,212.00	\$130.29	\$1,342.29
6-86-130P	Nerf Bar Rear Bumper	3	\$404.00	\$1,212.00	\$130.29	\$1,342.29
VSUR	Manufacturer's surcharge	3	\$2,346.00	\$7,038.00	\$756.59	\$7,794.59
FSD2	Delivery	3	\$2,000.00	\$6,000.00	\$645.00	\$6,645.00
7-800-006	GO-4 Sliding Door EV 20.2KW - Up to 100 Miles	3	\$33,552.00	\$100,656.00	\$10,820.52	\$111,476.52
Totals:						\$147,652.77



Date: June 14, 2022

Quotation for City of Alameda

Quote No:632157-00

Configuration Product Details

020-Custom ALPR provided by TDS installed by WWI Qty 3

Model	Product Description	Qty	Unit Price	Extended	Sales Tax	Total
FSD1	Setup	3	\$1,500.00	\$4,500.00	\$483.75	\$4,983.75
Totals:						\$4,983.75



Date: June 14, 2022

Quotation for City of Alameda

Quote No:632157-00

Standard Terms and Conditions

Prices including all finance options are subject to change based on Turf Star Western's receipt of product and estimated shipments. Currently, product availability is a minimum of 6-18 months. Your Final Price will be determined at time of shipment. Delivery is FOB point of origin unless otherwise stated.

Office Locations

Northern California:

3928 N.Blattela Lane
Fresno, CA 93727
Fax: (559) 277-7123

2438 Radley Court
Hayward, CA 94545
Fax: (510) 785-3576

11373 Sunrise Gold Circle
Rancho Cordova, CA 95742
Fax: (800) 241-1997

Southern California:

79-253 Country Club Drive
Bermuda Dunes, CA 92203
Fax: (760) 345-4297

955 Beacon Street
Brea, CA 92821
Fax: (800) 775-8873

2110 La Mirada Ste 100
Vista, CA 92083
Fax: (760) 734-4285

Pacific Northwest:

1750 Industrial Dr.NE
Salem, OR 97301
Ph: (503) 691-0250

5869 South 194th
Kent, WA 98032
Fax: (253) 872-6942

2824 East Garland
Spokane, WA 99207
Fax: (509) 483-7563



WARNING:

Cancer and Reproductive Harm-<http://www.P65Warnings.ca.gov>

For more information, please visit <http://www.ttcocalprop65.com>

CALIFORNIA SPARK ARRESTER WARNING

Operation of this equipment in the State of California may create sparks that can start fires around dry vegetation. A spark arrester may be required. The operator should contact local fire agencies for laws or regulations relating to fire prevention requirements.



Westward Industries

Fleet Utility Vehicles

#122220-WWI

Maturity Date: 01/29/2025

Products & Services



Products & Services

Sourcewell contract 122220-WWI gives access to the following types of goods and services:

- GO-4 parking vehicle fuel
- GO-4 parking vehicle EV
- On Road vehicles with ALPR
- GO-4 XTR compact trash hauler
- MAX-EV LSV low-speed vehicles
- MAX-EV LSV delivery vehicles
- MAX-EV 3-wheel transporter
- MAX-EV 3-wheel parking
- GO-4 XTF utility 3 wheel
- Medium-duty utility vehicles

- Medium-duty hauler
- Maintenance vehicles

Locate your local dealer or representative [↗](#)

(nongovernment site)

Become a Member

Simply complete the online application or contact the Client Development team at service@sourcewell-mn.gov or 877-585-9706.

Search Vendors & Contracts

General Contracts

eziQC Contracts

Sourcewell's website may contain links to nongovernment websites being provided as a convenience and for informational purposes only. Sourcewell neither endorses nor guarantees, in any way, the external organization's services, advice, or products included in these website links. Sourcewell bears no responsibility for the accuracy, legality, or timeliness of any content on the external site or for that of subsequent links. All questions related to content on external sites should be addressed directly to the host of that particular website.



[About](#)
[Careers](#)
[Compliance & Legal](#)
[Contact](#)
[News](#)

[Terms & Conditions](#)

[Privacy Policy](#)

[All Solutions →](#)

[Minnesota-Only Solutions →](#)

[Supplier Resources →](#)



© 2022 Sourcewell. All rights reserved.



GO-4 Parking Enforcement Vehicle

Smart Parking Enforcement on the Go



- *LPR integration ready*
- *Reduce traffic interruption*
- *Dual sided entry/exit*
- *Sustainable EV option*

The Right Vehicle for the Job

The GO-4 is the only task specific vehicle on the market designed specifically for parking enforcement. It has a small automotive footprint, while providing features and functions to keep your parking operations moving efficiently and safely. With the latest in License Plate Reader (LPR) and chalking technologies integrated into the design, the GO-4 is a small but mighty powerhouse that drives an increase in revenue for your department and sustainability goals for your city.

We have multiple models designed to meet your needs and budget:

- **GO-4 Gas** - 3-wheels (new and improved!)
- **GO-4 EV** - 3-wheels
- **MAXX™ EV** - 4-wheels (new LSV coming late 2019)

All vehicles come with the standard outfit and you have the option of upgrading to a fully-loaded vehicle, including comfort amenities, additional bed space for hauling cones and equipment, and integrated parking enforcement technologies. We customize our vehicles based on your operational needs, which can vary from location to location.



GO-4 Gas - 3-wheels



GO-4 EV - 3-wheels



new LSV coming late 2019
(also available with white exterior)

MAXX™ EV - 4-wheels

GO-4 Delivers Results

At Westward Industries (WWI), our aim is to understand what matters most to our customers and deliver on our promises. The GO-4 has evolved to meet your operational needs and we will continue to not only adapt to the ever-changing city environment, but plan to continue to lead the industry with smart enforcement vehicle technology that will propel your operations into the future.

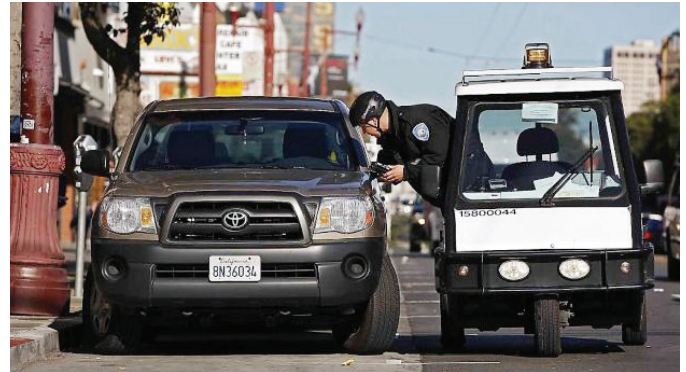


Technology and LPR

Technology is driving the pace of change in the parking industry and Westward Industries has taken the lead in developing smart parking enforcement vehicles with officers and cities in mind. Today's GO-4 vehicle, designed for parking enforcement, is the first to integrate license plate readers into the vehicles during manufacturing while allowing the systems to be transferable to outfitted GO-4's in the fleet.

With LPR cameras mounted on the GO-4, operators can optimize their routes and become more efficient at covering many types of parking zones throughout a city. As each plate is read, user-friendly in-vehicle software shows plate and vehicle images and time stamps, which can be used as supportive evidence in case of disputes. Wheel images and/or full vehicle images can be recorded for additional proof against citation appeals.

Our capabilities are endless given we design and manufacture vehicles in-house at our centrally located North American facility in Winnipeg, Manitoba Canada.



Improving Efficiencies

The GO-4 is the ONLY street legal vehicle on the market designed specifically for parking enforcement accessibility. Hop in, hop out, hop up with state-of-the-art suspension and easy glide doors, officers increase ticketing rates in a vehicle designed for repetitive entry and exit on or off curbs.

Our dual-entry vehicles allow parking enforcement officers to easily transition from both sides of the vehicle, while leaving a small footprint in traffic lanes. The vehicle's doors can remain open while driving permitting the operator easy access while navigating.



Fuel efficiency is unparalleled in the GO-4 and with fuel mileage up to 45mpg, our EV model can travel up to 100 miles without a charge and reduces your agency's carbon footprint.



*Efficiency =
More Enforcement =
More Revenue*



Safety First

Street lanes were not designed to allow for traffic flow and a vehicle enforcing parking. The GO-4 was designed and manufactured at the request of the City of New York in 1990 to create a vehicle that allowed officers to safely operate in congested streets.

The GO-4 was designed not only to keep officers out of harms way while entering and exiting the vehicle, our built-tough roll bar steel chassis has been proven to protect officers when accidents do happen. Vehicles have an optional rearview mirror inside the cab with a backup camera image and rear back up sensors that alarm as you approach a parked vehicle — offering additional safety to the driver.



Dependability and Parts Portal

Our vehicles have a proven lifespan of up to 20 years. Unlike traditional passenger vehicles, the GO-4 was designed for short distance stop-and-go driver behavior. This means more time on the road and a better return on your investment.

Maintenance needs are minimal on the GO-4 and when there is a need for repair, our online parts portal allows dealers to quickly process and deliver parts. Most parts needed for repairs are available off-the-shelf and for operators that would prefer to leave repairs to the dealership, maintenance contracts are available at most locations.

Proven in America's Finest Cities

“

The GO-4 is the most suitable parking enforcement vehicle operating today. It is the most maneuverable parking enforcement vehicle and affords the enforcement officer a high degree of safety and comfort. We have tested other vehicles but continue to return to the GO-4 as it provides the greatest overall return on investment.

~ Mark Lyons, Co-Chair International Parking Institute, CAPP; Parking Division General Manager City of Sarasota

”

We are trusted by parking operators and agencies of all sizes and in all climates. Westward Industries not only provides vehicles, but continued technical and customer support for customers in over 500 locations in the U.S. for almost 30 years.



San Francisco, CA

Population: 884,363

Customer Since: 1995

Vehicles Used: 300 Gas GO-4, 2 EV GO-4
– with chalking and some LPR integration

Primary Use: Parking Enforcement

Major Challenge: Severe traffic & density

The Solution: The GO-4 and GO-4 EV

With nearly 40,000 parking spaces to monitor, San Francisco Municipal Transit Agency (SFMTA) needed a vehicle that could withstand the high usage and short distance wear and tear impact that would typically limit their fleet's lifespan. SFMTA looked to Westward Industries to improve their parking enforcement department's efficiency while limiting their vehicle's footprint in very challenging terrain and severe traffic congestion - and has grown their GO-4 fleet over the last 24 years. Recently, the City has begun replacing units at the end of their life cycle, some aged 23 years – a testament to the durability of the vehicle.



Aspen, CO

Population: 7,359

Customer Since: 1994

Vehicles Used: 3 Gas GO-4 – LPR integrated

Primary Use: Parking Enforcement

Major Challenge: Tourist season & space constraints

The Solution: The GO-4 with LPR install

The City of Aspen is known as a tourist hot spot in Colorado. The population influxes drastically during the winter months, increasing traffic congestion and parking management needs. Aspen needed a parking enforcement vehicle that delivered superior maneuverability to help meet their goals of decreasing congestion and improving efficiencies while enforcing their residential paid parking zones. The City of Aspen originally purchased GO-4 vehicles in 1994 and have relied on GO-4's as their primary enforcement vehicle through all weather conditions, including extreme wind and snow.



Santa Monica, CA

Population: 92,306

Customer Since: 1993

Vehicles Used: 30 EV GO-4, 22 Gas GO-4

Primary Use: Parking Enforcement

Major Challenge: Operating a low emissions vehicle for severe usage in Parking Enforcement

The Solution: The GO-4 EV

The City of Santa Monica, an early adopter of the GO-4, has mixed density and terrain in just over 8 square miles. From a coastline full of tourists, to a dense city center and hilly suburbs, the City's demanding environment led them to test multiple vehicles for parking enforcement. In recent years, the GO-4 electric vehicle was tested in Santa Monica and passed all requirements for range and usage. Soon after, a total of 30 units were ordered and deployed. Now running in their fourth year, the units have proven to be reliable and dependable. The vehicles are under severe usage every day and continue to be workhorses for the department.

Westward Industries - Where Quality and Innovation Merge

At Westward Industries we have a strong history of designing and manufacturing task specific vehicles for use in cities as large as New York City to as small as Fargo, North Dakota. Our dedication to excellence has taught us that we must create collaboratively – with our suppliers, technology partners, and you – our customers. Since our rebirth under new ownership in 2012 we've leveraged customer feedback to make improvements not only to our vehicles, but to our processes.

With over 4000 vehicles sold, we are one of the largest manufacturers of task specific vehicles in North America.

1990  Original Westward Industries creates small footprint vehicle on request from New York City


2016  Launch of online parts portal for dealers for easy ordering


2012  Purchase of Westward Industries by Franz Brothers

2016  Integration of LPR on GO-4 EV

2013  Launch production of new and improved drivetrain, increasing efficiency and reliability

2017  Increased dealer network, serving over 500 cities in the U.S.

2014  Internal quality control culture firmly established

2018  WWI launches the most nimble refuse hauler on the market, GO-4 XTR

2015  GO-4 EV, first electric task specific vehicle hits the market with 100 mile range

2019  New 4-wheel Low Speed Vehicle model launches in late 2019



Contact us today for a free demo.

Email: sales@wwi-go4.com or Call: 204-594-4100