

THIS IS YOUR QUOTE

DOWNTOWN FORD SALES
525 N16th Street, Sacramento, CA. 95811
916-442-6931 fax 916-491-3138

QUOTE#

RJM110720231249

QUOTATION

Customer

Name CITY OF ALAMEDA
Address F550 DIESEL 4X2 EXTENDED CAB WITH VERSALIFT
City AERIAL BODY
Phone ATT: DAN OLBERG

Date 11/7/2022
REP BOB
Phone 916.442.6931
FOB SACRAMENTO

Qty	Description	Unit Price	TOTAL
	STATE OF CALIFORNIA CONTRACT I-22-23-20F CLIN 53		
*****	PRICES & OPTIONS BELOW THIS LINE WILL CHANGE		
1	NEW FORD F550 4x2 REGULAR CAB/CHASSIS, 6.7L Diesel Engine, 10 Speed Auto Trans, 169"WB, 84"CA 19,500# GVWR, Black Front Bumper, 40 Gal Fuel Tank Rubber Flooring, Manual Windows/Locks, A/C, Vinyl Seat XL Trim, Tilt Wheel, 4:88 L/S Rear	\$55,283.00	\$55,283.00
1	19,500 lbs GVWR - std	\$0.00	\$0.00
1	Change to Extended Cab with 84" CA	\$2,989.00	\$2,989.00
1	PTO Provision - STANDARD	\$0.00	\$0.00
1	Power Group - STANDARD	\$0.00	\$0.00
1	Extra Heavy Duty Front Suspension (7,500 lbs) (67P)	\$285.00	\$285.00
1	Snow Plow Package <i>needed for HD Suspension</i>	\$250.00	\$250.00
1	Running Boards	\$445.00	\$445.00
1	Spare Tire	\$375.00	\$375.00
1	Trailer Brake Controller - STANDARD	\$0.00	\$0.00
1	Rear Camera Kit	\$415.00	\$415.00
2	Extra Key (w/Power)	\$299.00	\$598.00
1	Utility Crane & Equipment Quote for Versalift SST40-EIH Aerial Lift per Quote #221031	\$113,330.00	\$113,330.00
1	DOCUMENT FEE	\$85.00	\$85.00

Subtotal \$174,055.00

Delivery \$400.00

Taxes 10.75% Sales Tax \$18,710.92

CA Tire Tax \$12.25

TOTAL \$193,178.17

Payment Details

- Cash
- Check
- Credit Card

Name _____
CC # _____
Expires _____

Office Use Only

\$500 DISCOUNT WITH PAYMENT IN 20 DAYS



X 10/10
STATE CONTRACT

Utility Equipment & Supply, Inc.
dba Utility Crane & Equipment
8800 West Buckeye Road
Tolleson, AZ 85353
(866) 832-4831

QUOTATION

AERIAL BASKETS - DIGGER DERRICKS - UNDERGROUND LINE & WATER LEAK LOCATORS

Date: 11/2/2022

To: Downtown Ford

Re: City of Alameda

Submitted by: Chip Reed

Quote Number

221031

We submit for your consideration and acceptance the following equipment and prices:

Quantity	Model	Description	Price	Total
1		Versalift SST40-EIH with steel body mounted on your supplied chassis	\$ 103,028.00	\$ 103,028.00
		FOB City of Alameda		
	Note	Delivery the latter of 630 days after receipt of PO, 260 days after approval of body drawings, or not less than 120 days after receipt of chassis from manufacturer, subject to change.		
	Note	Due to volatility in the steel and aluminum markets this quote will expire on 12/03/2022. After this date please contact your sales representative for an updated quote.		

Delivery: Included

Taxes: As applicable

Terms: Net 15 Days

Remit to: 8800 West Buckeye Road
Tolleson, AZ 85353

Extended Total: \$ 103,028.00

Due to significant increases from our suppliers over the past 12 months, Utility Crane & Equipment's (UCE) quote contained herein is based upon current price quotations from our vendors, which often notify UCE of price increases due to their increases in labor and material costs and supply chain shortages. UCE has no control over these increases. Accordingly, in the event that any individual part or component of a vehicle's equipment, or if applicable freight charges increase by more than 1%, irrespective of the above quotation, by accepting the above Quotation, customer agrees that UCE may increase its cost of the above vehicle to cover its increased costs. UCE agrees to provide supporting documentation to support any such price increase. Furthermore, as a result of supply chain shortages and delays by our suppliers, any promised delivery date of any vehicle ordered may itself be delayed; and UCE disclaims any liability for such delay. Customer's acceptance of this Quote, even though evidenced by a separate Purchase Agreement, serves as Customer's agreement to the above, and this language is hereby incorporated into any such separate Purchase Agreement; and, in the event of any conflict between the language of that Purchase Agreement and the foregoing language, the foregoing language shall control.

Cab and Chassis Requirements:

- ✓ Ford F-550 4x2, regular cab
- ✓ Diesel engine
- ✓ 84" CA
- ✓ GVWR: 19,500 lb. Payload Plus Upgrade Package
- ✓ Extra Heavy Duty Front End Suspension 7,500 GAWR
- ✓ Snowplow Prep Package *needed FOR H.D. Suspension*
- ✓ Transmission Power Take-Off Provision *STD*
- ✓ Rear View Camera & Prep Kit

Steel Body 132" long x 40" high x 96" wide service body including the following:

- 24" tread plate tail shelf with cutout for arrow stick and grip strut steps on curbside
- Grab handles at side access.
- Stainless steel automotive rotary door latches with rod and socket hinges.
- Chain stops on all horizontal doors, spring checks on vertical doors.
- Master locking system excluding 1st vertical curbside.
- Wheel chock storage on curbside.
- All shelf dividers on 2-inch centers.
- Headache rack with strobe light mounting plates.
- Two pool style grab handles one each side of tailshelf.
- Drop board, one at the end of load space.
- Two outrigger pad holders one under each first vertical compartment.

Street side Compartmentation:

- 1st Vertical: Two (2) adjustable shelves with dividers.
- 2nd Vertical: One (2) adjustable shelf with dividers.
- Horizontal: One (1) adjustable Shelf.
- Rear Vertical: Two (2) adjustable shelves with dividers.

Curbside Compartments:

- 1st Vertical: Two (2) adjustable shelves with dividers.
- 2nd Vertical: Two adjustable shelves with dividers
- Horizontal: One (1) adjustable shelf.
- Rear Vertical: Two (2) adjustable shelves.

Lighting and Electrical:

- FMVSS lights, LED.
- Eight (8) LED warning lights. Two (2) mounted in chassis grill. Two (2) mounted in body on each side over wheel wells. Two (2) mounted in rear of body curb and street side high as possible. Two (2) mounted left and right at rear of tail shelf.
- LED arrow stick installed in tailshelf with controller in cab.
- 3000-Watt Inverter wired to chassis battery.
- Two (2) amber strobes mounted on headache rack, one (1) each side, inboard of Golights.
- Two (2) Golights mounted on headache rack, one (1) each side, outboard of beacons.

Installation to include the following:

- VERSALIFT SST-40-EIH, mounting hardware, PTO and pump.
- H-Frame outriggers between body and cab.
- Outrigger/boom interlock.
- Paint steel service body and accessories.
- Back up alarm.
- ICC bumper (No Hitch).
- Mud flaps and park brake interlock system.
- Furnish fire extinguisher, 3-piece triangle reflector kit and wheel chocks.
- Test ride completed unit for 1 hour.
- Test and certify per ANSI A92.2-2001.

Thank you for the opportunity to quote.

Sincerely,

Chip Reed
Regional Sales Manager
Utility Crane & Equipment
chip@utilityce.com
916-413-1911

SST-37/40-EIH

Insulated Lightweight Workhorse

- **WORKING HEIGHT:** Up to 45 ft (13.7 m)
with Standard Pedestal
- **HORIZONTAL REACH:** Up to 27 ft 9 in (8.5 m)
- **PLATFORM CAPACITY:** Up to 450 lbs (204 kg)

**FULL
PRESSURE
HYDRAULIC
CONTROLS**

**BEST
IN CLASS
PAYLOAD**



SST-40-EIH model shown here

VERSALIFT®

**LOWER TRUE
COST OF
OWNERSHIP**

7601 Imperial Drive | Waco, Texas 76712 | 254.399.2100 | VERSALIFT.com

SST-37/40-EIH

Insulated Lightweight Workhorse



GENERAL SPECIFICATIONS:

(Based on 40 in Frame)

Horizontal Reach 27 ft 9 in (8.5 m)

Maximum Platform Capacity 450 lbs (204 kg)

WITH STANDARD PEDESTAL:

Height to Bottom of Platform

SST-37-EIH 37 ft (11.3 m)

SST-40-EIH 40 ft (12.2 m)

Working Height

SST-37-EIH 42 ft (12.8 m)

SST-40-EIH 45 ft (13.7 m)

Stowed Travel Height 10 ft 4 in (3.15 m)

INSULATION GAP:

Upper Boom Fully Retracted 42 in (1.07 m)

Lower Boom Insert (optional) 12 in (0.3 m)

Upper Boom Fully Retracted 10 in (.25 m)

(w/o Electrogard)

HYDRAULIC SYSTEM:

Operating Pressure 2250 psi (155 bar)

Flow Rate 5 gpm (18.9 lpm)

System Type Open Center

BOOM ACTION:

Inner Boom Extension 116 in (2.9 m)

Outer Boom -14° to +74°

Lower Boom

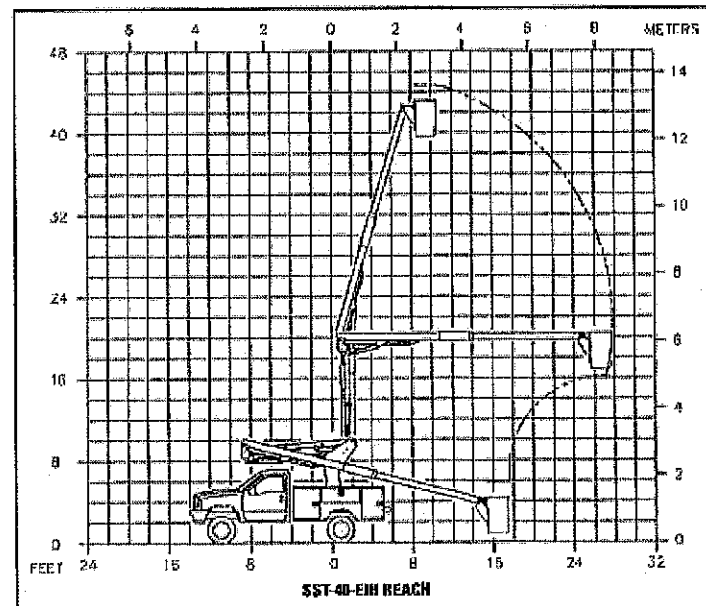
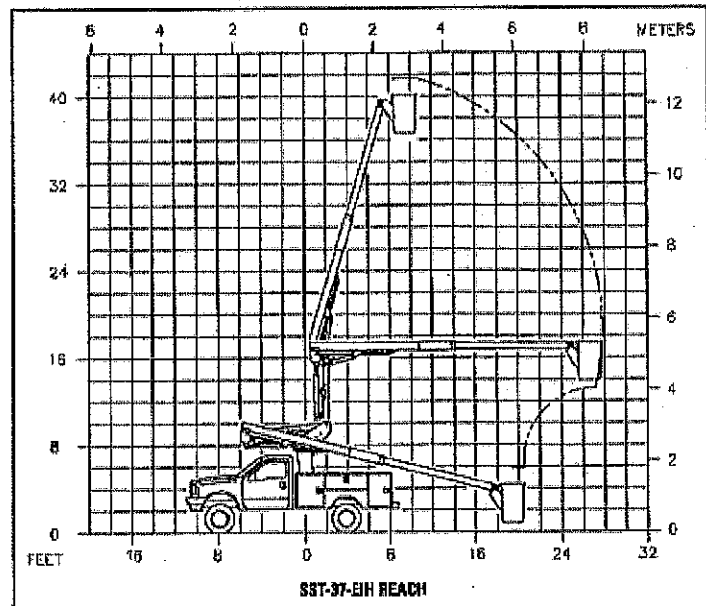
SST-37-EIH -7° to Vertical

SST-40-EIH -5° to Vertical

Rotation 370° Non-Continuous

OPTIONS:

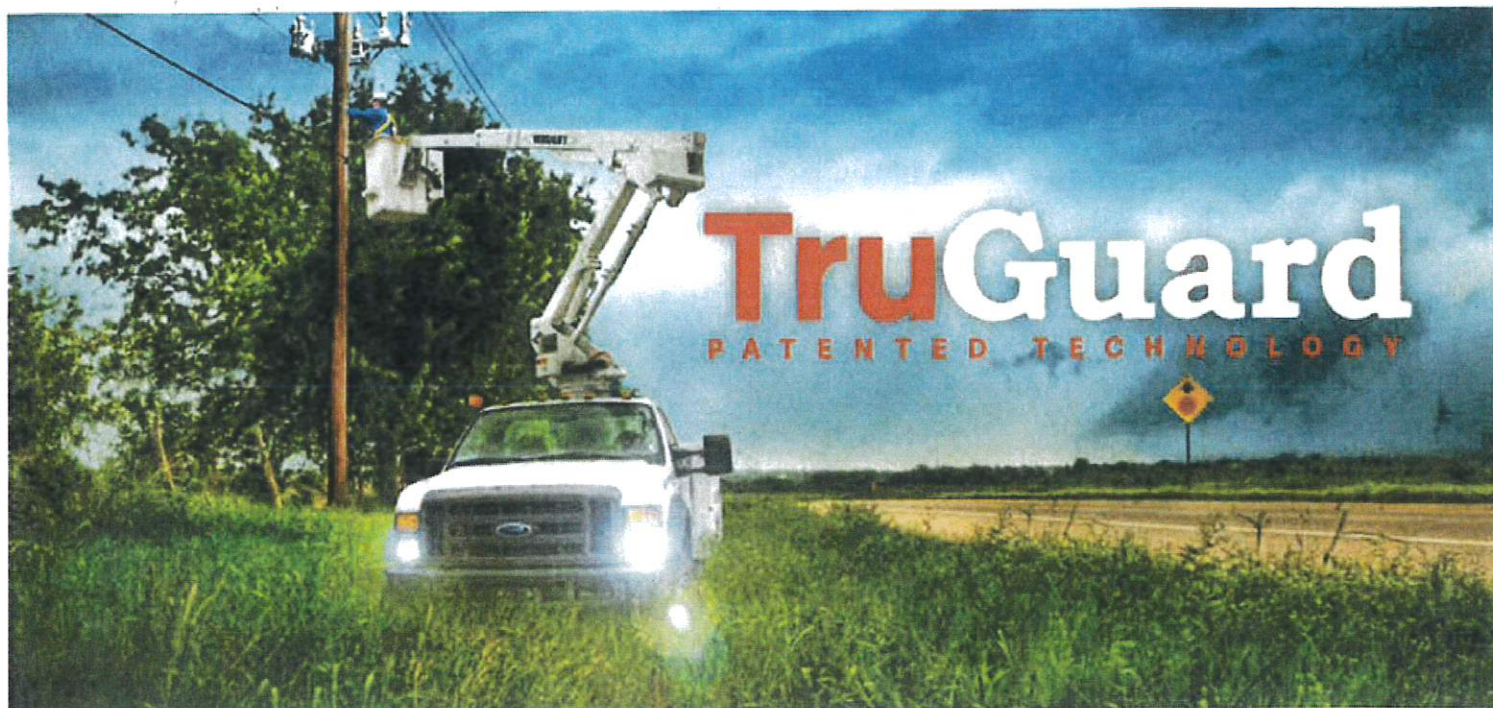
- 4-Axis Controller
- Continuous Rotation
- Rear Torsion Bars
- Independent Outriggers
- Backup 12-Volt Pump
- Engine Throttle Control
- Lift Eye (500 lb max)
- Automatic Boom Latch
- 180° Rotating Platform
- Hydraulic Tool Circuit at the Platform



Note: Specifications on units may vary or change without prior notification due to option selections.

REV. 03/20

VERSALIFT is a leading manufacturer of bucket trucks, digger derricks and cable placers. Customers in the electric utility, telecommunications, forestry and sign, light & traffic industries experience a lower true cost of ownership by choosing Versalift. Our equipment is engineered to be lighter, while keeping the designs simple, which provides advantages like less unscheduled maintenance, greater payloads and ease of maintenance. Versalift has the lowest recall rate in the industry making it the smarter and most reliable choice. Versalift aerial lifts are the only units to feature the patented TruGuard safety system, which provides additional protection to linemen in the bucket. Versalift is a TMA Manufacturing Company, and together with Aspen Aerials has more than 1,400 employees worldwide.



TruGuard

PATENTED TECHNOLOGY

No matter if you're in the bucket or on the ground, Safety for you and your AERIAL OPERATORS is a TOP PRIORITY.

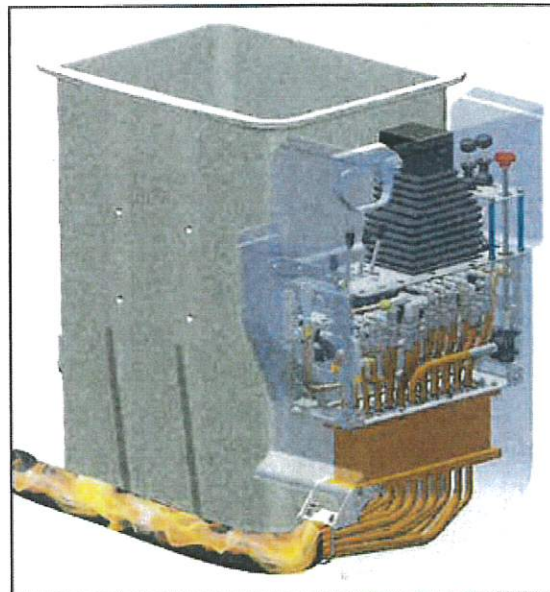
With operators or lift boom tips easily coming into contact with electrical phases through the upper controls, severe injury and/or death is not only possible, but a safety risk you cannot afford in the lives of your operators and your business. In the past, lift companies have offered a solution of plastic handles for the protection of the upper controls.

However, these handles still provide only limited safety with dirt and grime contamination, breakage and frequent repair, and incomplete electrical blockage.

OUR SOLUTION

At VERSALIFT, we believe you deserve safety that you can count on when faced with your job's everyday situations. Which is why our world-class engineers created TruGuard® technology, a complete upper control isolating system.

TruGuard® is a "true guard" protection against phase-to-phase and phase-to-ground electrical contact when in an aerial lift, all the way from the boom tip and jib to the ground contact.

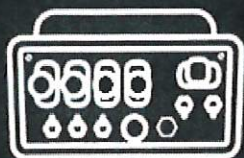


TruGuard
PATENTED TECHNOLOGY

◀ **VERSALIFT** ▶

TruGuard

PATENTED TECHNOLOGY



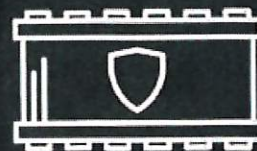
HYDRAULIC

Offers full hydraulic controls that are mechanic-friendly, operator-preferred, and last for 30+ years.



ISOLATION GAP

Protects all control handles at the upper control, hydraulic tool power ports, and console area.



DEBRIS RESISTANCE

Easily passes ANSI A92.2 and protects surfaces from road grime and environmental contamination.

WHY IS TRUGUARD® DIFFERENT?

With TruGuard®, you are able to offer your lift operators unprecedented security and safety while working near electrical phases.

Our world-class engineers have created a uniquely engineered polymer with high dielectric properties and ultra high strength. By isolating the entire area, TruGuard® is the only true upper control safety panel that protects all control handles at the upper control, as well as hydraulic tool power ports, and the console area itself. Giving you the power you want when operating your lift, TruGuard®'s full hydraulic controls with durable metal handles are long lasting and preferred both by mechanics and operators. TruGuard® passes ANSI A92.2 by resisting the dirt and grime you'll encounter throughout the life of your lift, giving you greater security. We've tested it in every challenging situation you'll ever face on the job, along with high pressure and extreme temperatures—and it's exceeded all expectations, including ours. We know it will exceed yours, too.

YOUR TURN

Safety and security for you and your lift operators when working with high phase electrical currents is possible. Interested in hearing more about TruGuard® or how to add it to your lift? Contact one of our knowledgeable VERSALIFT distributors today.



Note: Specifications on units may vary or change without prior notification due to option selections.

REV. 09/19

VERSALIFT is a leading manufacturer of bucket trucks, digger derricks and cable placers. Customers in the electric utility, telecommunications, forestry and sign, light & traffic industries experience a lower true cost of ownership by choosing Versalift. Our equipment is engineered to be lighter, while keeping the designs simple, which provides advantages like less unscheduled maintenance, greater payloads and ease of maintenance. Versalift has the lowest recall rate in the industry making it the smarter and most reliable choice. Versalift aerial lifts are the only units to feature the patented TruGuard® safety system, which provides additional protection to linemen in the bucket. Versalift is a Time Manufacturing Company, and together with Aspen Aerials has more than 1,000 employees worldwide.



OWNER'S WARRANTY

The **Versalift** Aerial Platform Lift is engineered and designed to perform as stated on published specifications. Only quality material and workmanship are used in the manufacture of this product. With proper installation, regular maintenance, and periodic repair service, the equipment will provide excellent service.

Those parts of the **Versalift** that are manufactured by **Time Manufacturing Company** are warranted for one full year from date of purchase. Structural components will carry a lifetime warranty for defects in material and workmanship which existed at the time of initial delivery, wear components are not covered by this statement. This warranty is issued only to the original purchaser and promises that **Time Manufacturing Company** manufactured products are free from defects in material and factory workmanship when properly installed, serviced, and operated under normal conditions, according to the manufacturer's instructions.

Manufacturer's obligation under this warranty is limited to correcting without charge at its factory any part or parts thereof which shall be returned to its factory or one of its Authorized Service Stations, transportation charges prepaid, within one year after being put into service by the original user, and which upon examination shall disclose to the Manufacturer's satisfaction to have been originally defective. Correction of such defects by repair to, or supplying of replacements for defective parts, shall constitute fulfillment of all obligations to original user.

This warranty shall not apply to any of the Manufacturer's products which must be replaced because of normal wear, which have been subject to misuses, negligence or accident, or which shall have been repaired or altered outside of the Manufacturer's factory (unless authorized by the Manufacturer in writing), products which have not been maintained and operated in accordance with Time Manufacturing Company's operators, maintenance manuals and bulletins, products which are repaired without using original Time Manufacturing Company parts. This limited warranty does not cover transportation fees and/or consumables used for the repair.

Manufacturer shall not be liable for loss, damage, or expense directly or indirectly from the use of its product or from any cause.

The above warranty supersedes and is in lieu of all other warranties, expressed or implied, and of all other liabilities or obligations on part of Manufacturer. No person, agent, or dealer is authorized to give any warranties on behalf of the Manufacturer or to assume for the Manufacturer any other liability in connection with any of its products unless made in writing and signed by an officer of the Manufacturer.



**Utility Equipment & Supply Inc.
Dbas: Utility Crane & Equipment.**

10160 Redwood Ave.
Fontana, CA 92335
(866) 832-4831



Date: 11/02/2022
Quote: 221031

**City of Alameda
Attn: Dan Olberg**

We are pleased to submit a quote for a Versalift SST-40-EIH Insulated 40 ft. telescopic aerial platform lift, 45 ft. working height including the following items:

Standard features and options include the following:

- Platform capacity of 350 lbs. (158.7 kg).
- Platform mounted full pressure Unitrol single-lever control including safety trigger and emergency stop control.
- Tru-Guard
- 180° hydraulic platform rotator.
- Full hydraulic controls on the turret with stow/unstow (platform leveling) at turret.
- Engine start/stop system with controls at platform and lower controls.
- Continuous unrestricted rotation including five pass collector rings.
- Five GPM open center hydraulic system.
- Chassis insulating system (lower boom insert) including fiberglass compensation link providing 12 inches insulation gap.
- Fiberglass inner boom and patented ELECTROGARD providing 42 in. (1.07 m) insulation gap fully retracted meeting ANSI A92.2-2001 requirements for Category C, 46 KV and below.
- ELECTROGARD and inner boom finished with white urethane paint over white gel coat.
- Integral hydraulic oil reservoir with dual sight gauges and 17-gallon capacity.
- End mounted closed 24 in. x 30 in. x 42 in. (0.61 m x 0.76 m x 1.07 m) fiberglass platform with one step, liner and cover.
- Master/slave hydraulic leveling with upper control to tilt for clean-out and rescue.
- Non-lube bearings used at all pivot points.
- Multi-link hose carrier system through booms.
- Boom cradle and ratchet type tie down strap.
- Back up pump providing power to all boom functions.
- Mounting hardware for chassis/cab installation.
- Full body harness and lanyard.
- Lifting eye 500 lb. capacity
- Outrigger interlock
- Painted standard white urethane.
- Two operator's manuals and two service manuals.
- ANSI A92.2-2001 data plate.