

A photograph of a street intersection. In the foreground, there is a large orange rectangular overlay containing text. The background shows a clear blue sky, green trees, and residential buildings. A person is riding a bicycle across a crosswalk in the middle ground. Several cars are visible on the street, including a white sedan and a dark SUV. Traffic lights and a utility pole with a red and white striped arm are also present.

# Clement Avenue/Tilden Way Project

January 25, 2023

# Introduction

Clement Avenue  
Extension Alternatives at  
Tilden Way



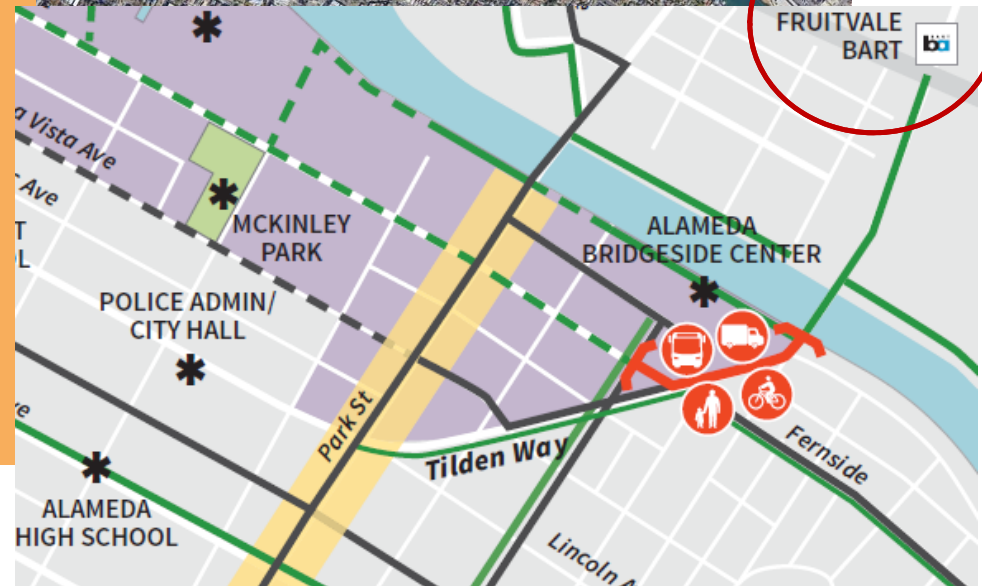
## Project Team:

- City of Alameda
- Kittelson & Associates, Inc
- Stakeholder Participants:

City, AC Transit, Alameda Housing Authority, BART, Bike Walk Alameda, County, DABA, Edison School, Members of the Public

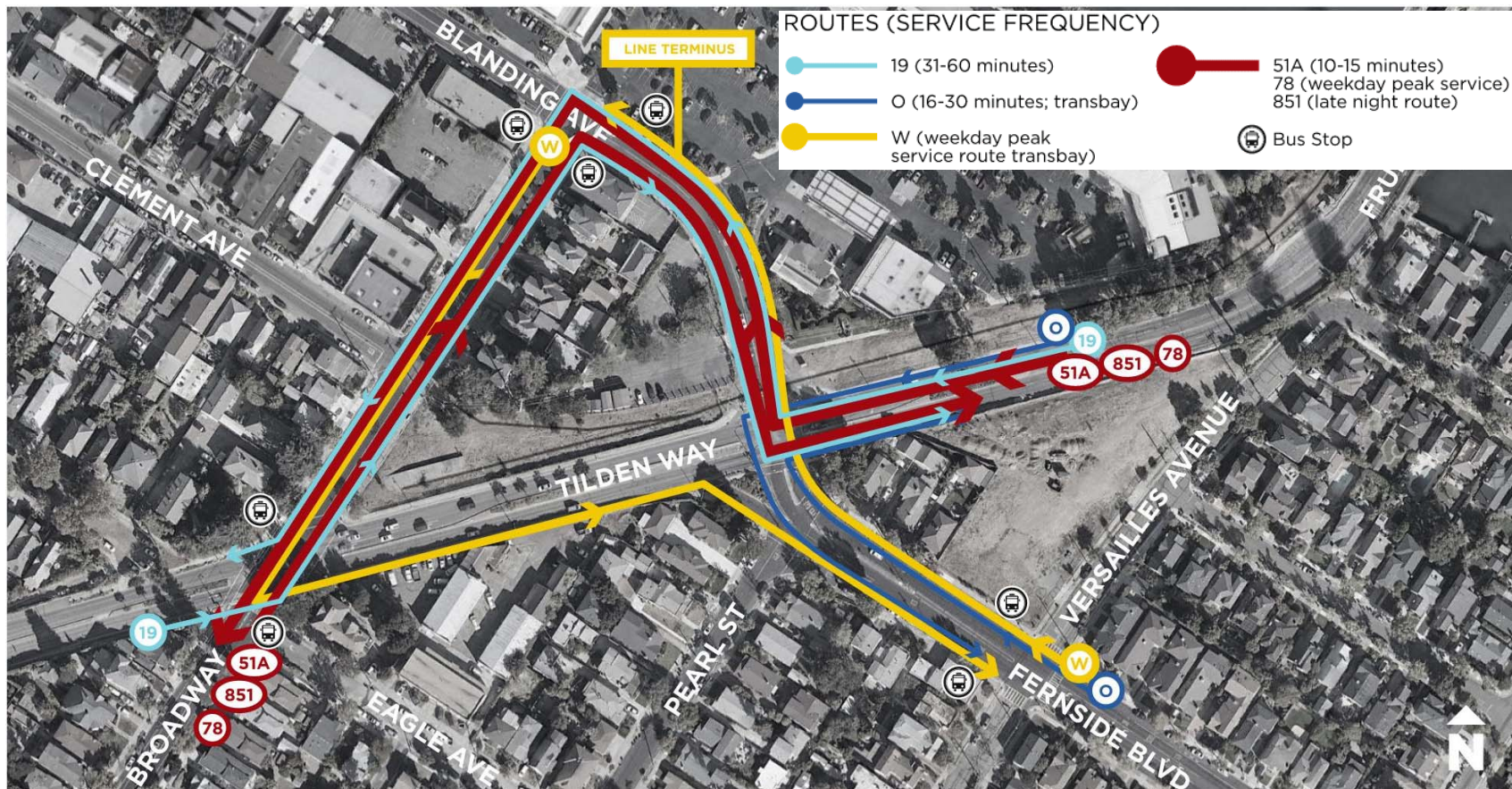
## Engagement and Outreach Update:

- Letter to adjacent properties
- Outreach via social media, emails and sandwich boards
- Website: [www.alamedaca.gov/ClementTilden](http://www.alamedaca.gov/ClementTilden)



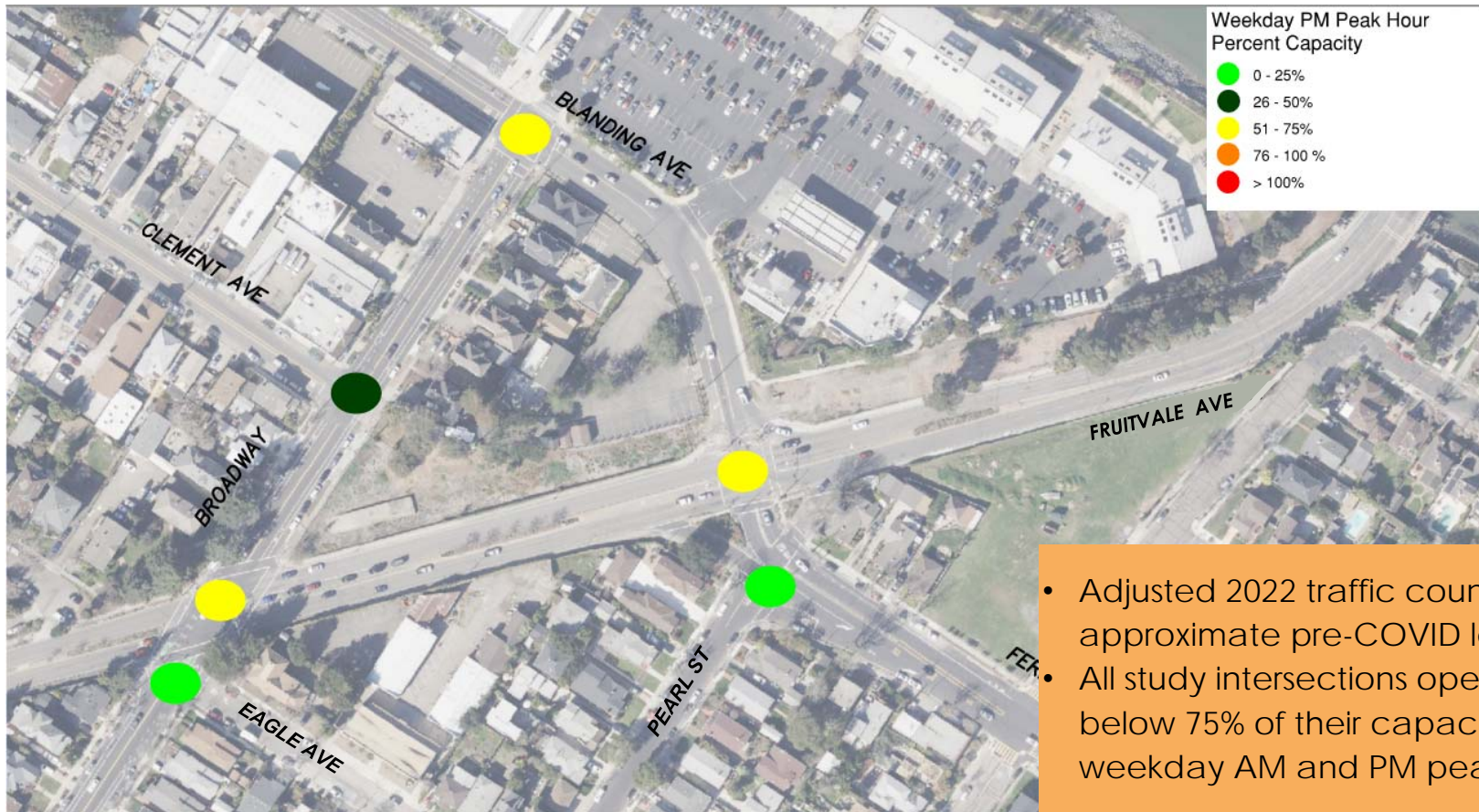


# Study Area AC Transit Bus Service





# Traffic Operations



- Adjusted 2022 traffic counts to approximate pre-COVID levels
- All study intersections operate at or below 75% of their capacity during the weekday AM and PM peak hour

## Project Goals and Intended Outcomes

- Prioritize **safety**
- Improve **mobility** for all roadway users
- Improve **bicycle and pedestrian** access
- Provide **flood reduction** and **landscaping** opportunities
- Reduce **greenhouse gas** emissions
- Comply with City plans and policies



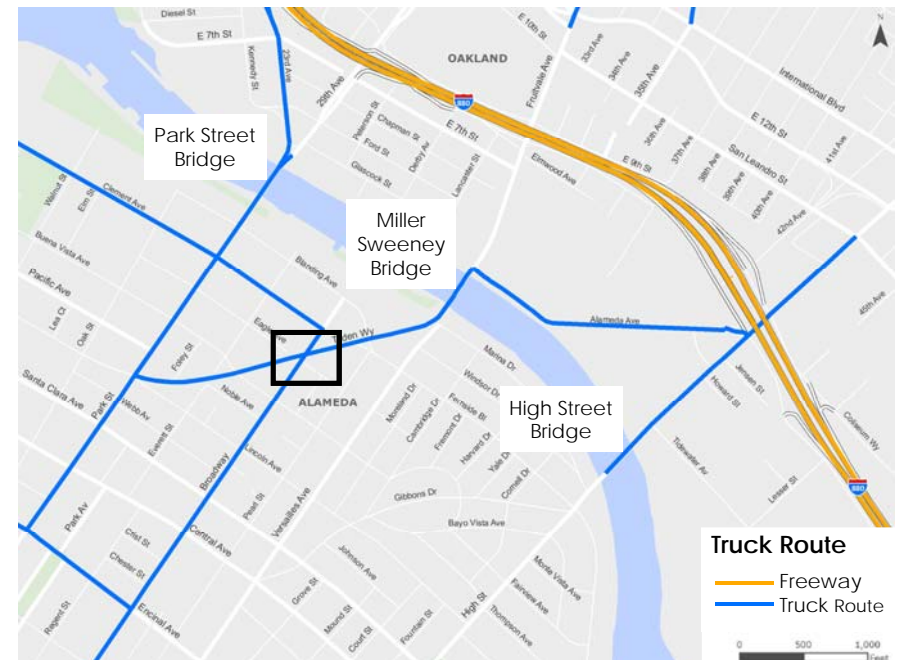
# Truck Connections

## Designated Truck Routes

- Alameda: Park St. Bridge and Miller-Sweeney Bridge
- Oakland: Park St. Bridge, Miller-Sweeney Bridge, and High St. Bridge

## Truck Usage

- Trucks east of Broadway are funneled to Miller-Sweeney Bridge
- Trucks west of Broadway use Park Street (heavy truck usage on Park St)
- Clement eastbound truck extension may be redundant



Note: Sharp right turn from Tilden to Broadway is on designated truck route.

# Public Input

(2 rounds of outreach)

## Virtual Workshop

- 1<sup>st</sup>: 31 attendees and 21 responses
- 2<sup>nd</sup>: 32 attendees and 14 responses

## In-Person Open Houses

- 1<sup>st</sup>: 19 attendees
- 2<sup>nd</sup>: 15 attendees

## Online Surveys

- 1<sup>st</sup>: 175 respondents
- 2<sup>nd</sup>: 116 respondents

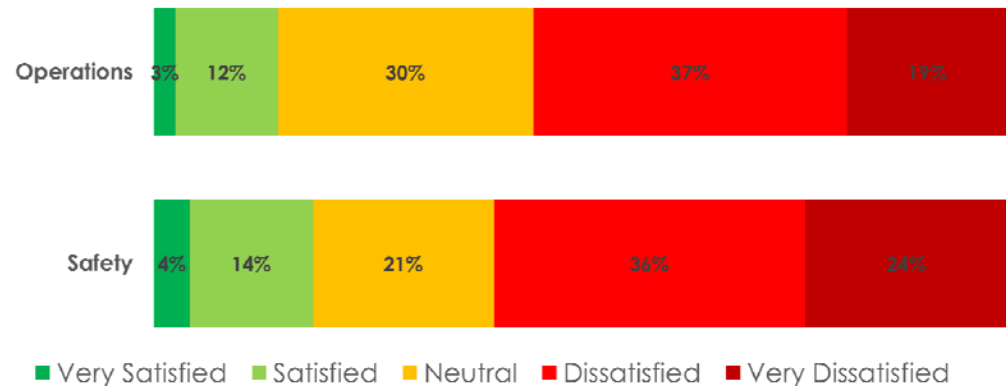
## Desires:

- Safety and slower speeds
- Connectivity for bicyclists
- Safer pedestrian crossings
- More greenery, open space and dog park

## Concerns:

- Through traffic and speeding on Clement Ave.
- Increase of truck traffic with extension
- Drivers' unfamiliarity with roundabouts
- Speeding along Pearl St and Fernside Blvd

How satisfied are you with the Clement/Tilden project area?





# Background

- Measure BB grant for \$10 million
- Union Pacific property acquisition
- Environmental clean-up
- Fill gap in active transportation and truck network



**MODES**

- |  |   |
|--|---|
|  Bus Route                  |  Bus Stop                    |
|  Truck Route                |  Proposed Truck Route       |
|  Existing Bike Lane or Path |  Proposed Bike Lane or Path |

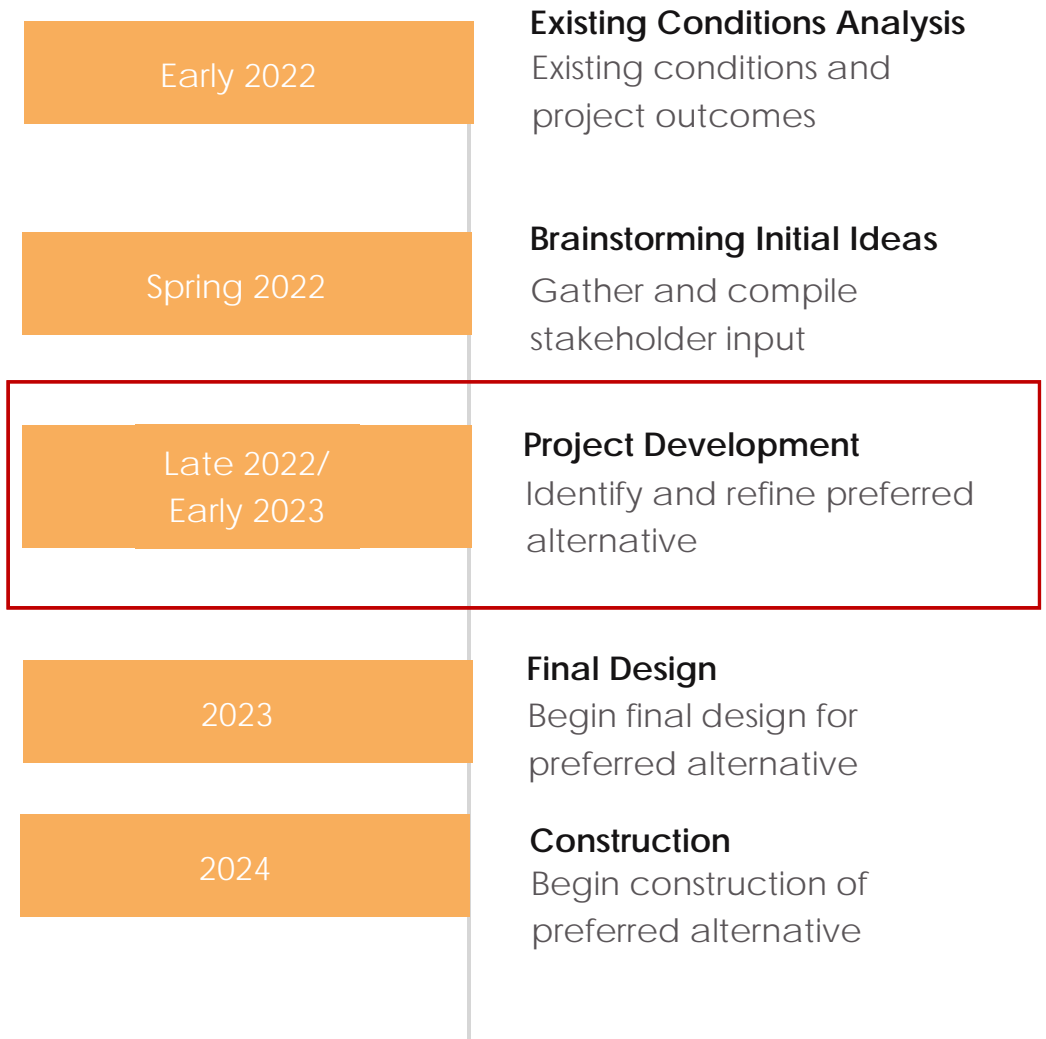
**Clement Avenue & Tilden Way  
Existing Routes/Facilities by Mode**





# Project Timeline

Project webpage:  
[www.alamedaca.gov/ClementTilden](http://www.alamedaca.gov/ClementTilden)



# Draft Concept

