



# Clement Avenue/Tilden Way Project

Recreation and Parks Commission  
February 9, 2023



# Introduction

## Clement Avenue Extension Alternatives at Tilden Way

### Project Team:

- City of Alameda
- Kittelson & Associates, Inc
- Stakeholder Participants:

City, AC Transit, Alameda Housing Authority, BART, Bike Walk Alameda, County, DABA, Edison School, Bay Trail, BCDC, Bridgeside Shopping Center, City of Oakland, Commission on Persons with Disabilities, Greer Mortuary, Unity Council in Oakland, Members of the Public

### Engagement and Outreach Update:

- Letter to adjacent properties
- Outreach via social media, emails and sandwich boards
- Website: [www.alamedaca.gov/ClementTilden](http://www.alamedaca.gov/ClementTilden)





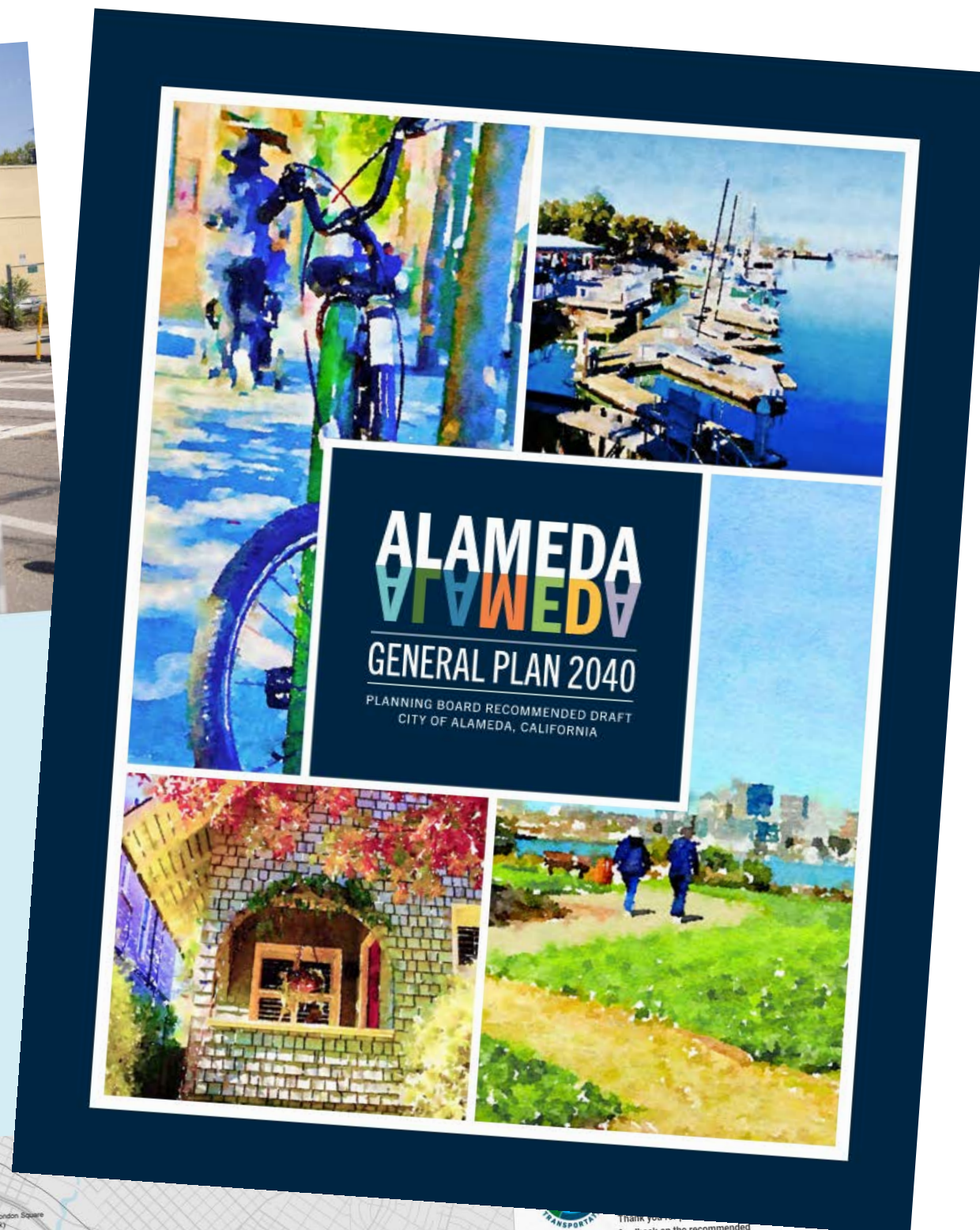
# Project Goals and Intended Outcomes

- Prioritize **safety**
- Improve **mobility** for all roadway users
- Improve **bicycle and pedestrian** access
- Provide **flood reduction** and **landscaping** opportunities
- Reduce **greenhouse gas** emissions
- **Comply** with City plans and policies



## Alameda Vision Zero Action Plan

November 3, 2021



## Active Transportation Plan Draft Bicycle Network



# Background

- Measure BB grant for \$10 million
- Union Pacific property acquisition
- Environmental clean-up
- Fill gap in active transportation and truck network



## MODES

Bus Route	Bus Stop
Truck Route	Proposed Truck Route
Existing Bike Lane or Path	Proposed Bike Lane or Path

**Clement Avenue & Tilden Way  
Existing Routes/Facilities by Mode**

# Project Timeline

Project webpage:  
[www.alamedaca.gov/ClementTilden](http://www.alamedaca.gov/ClementTilden)



# Public Input

## (2 rounds of outreach)

### Virtual Workshop

- **6/18/22:** 31 attendees; 21 responses
- **10/11/22:** 32 attendees; 14 responses

### In-Person Open Houses

- **6/19/22:** 19 attendees
- **10/12/22:** 15 attendees

### Online Surveys

- **6/19/22:** 175 respondents
- **10/2022:** 116 respondents

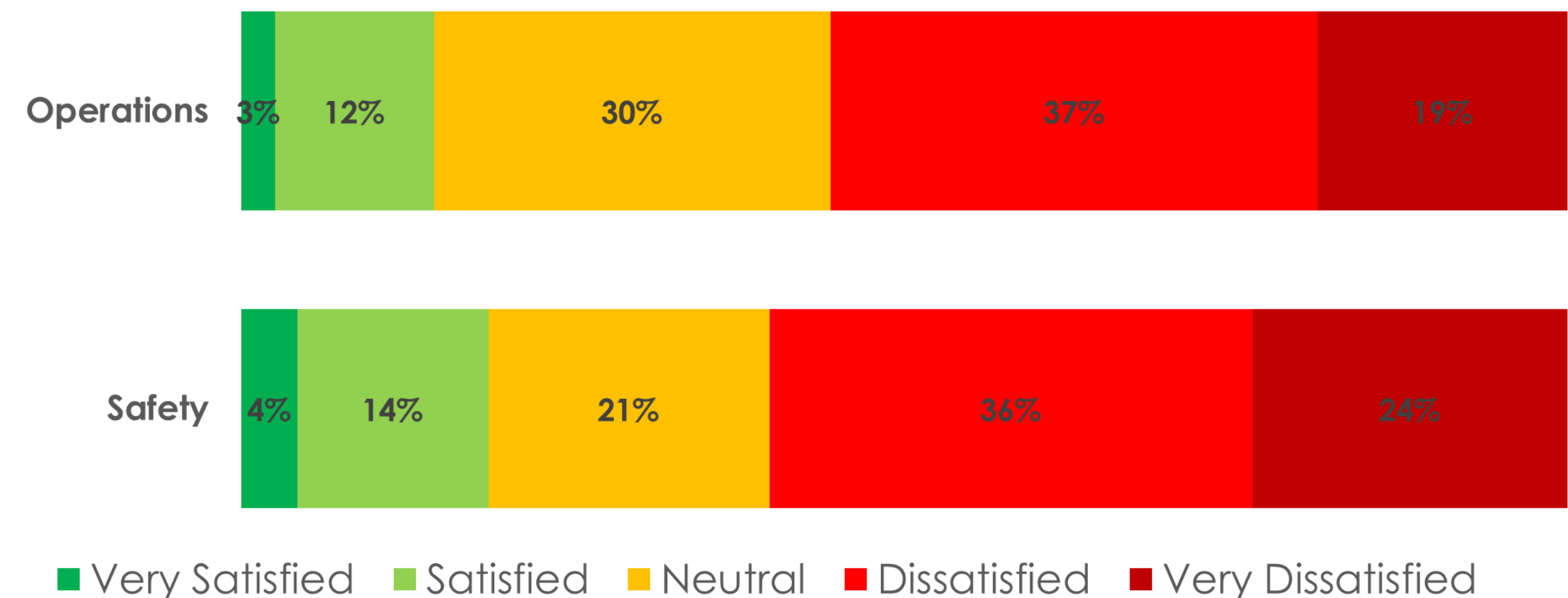
### Desires:

- Safety and slower speeds
- Connectivity for bicyclists
- Safer pedestrian crossings
- More greenery, open space and dog park

### Concerns:

- Through traffic and speeding on Clement Ave.
- Increase of truck traffic with extension
- Drivers' unfamiliarity with roundabouts
- Speeding along Pearl St and Fernside Blvd

How satisfied are you with the Clement/Tilden project area?



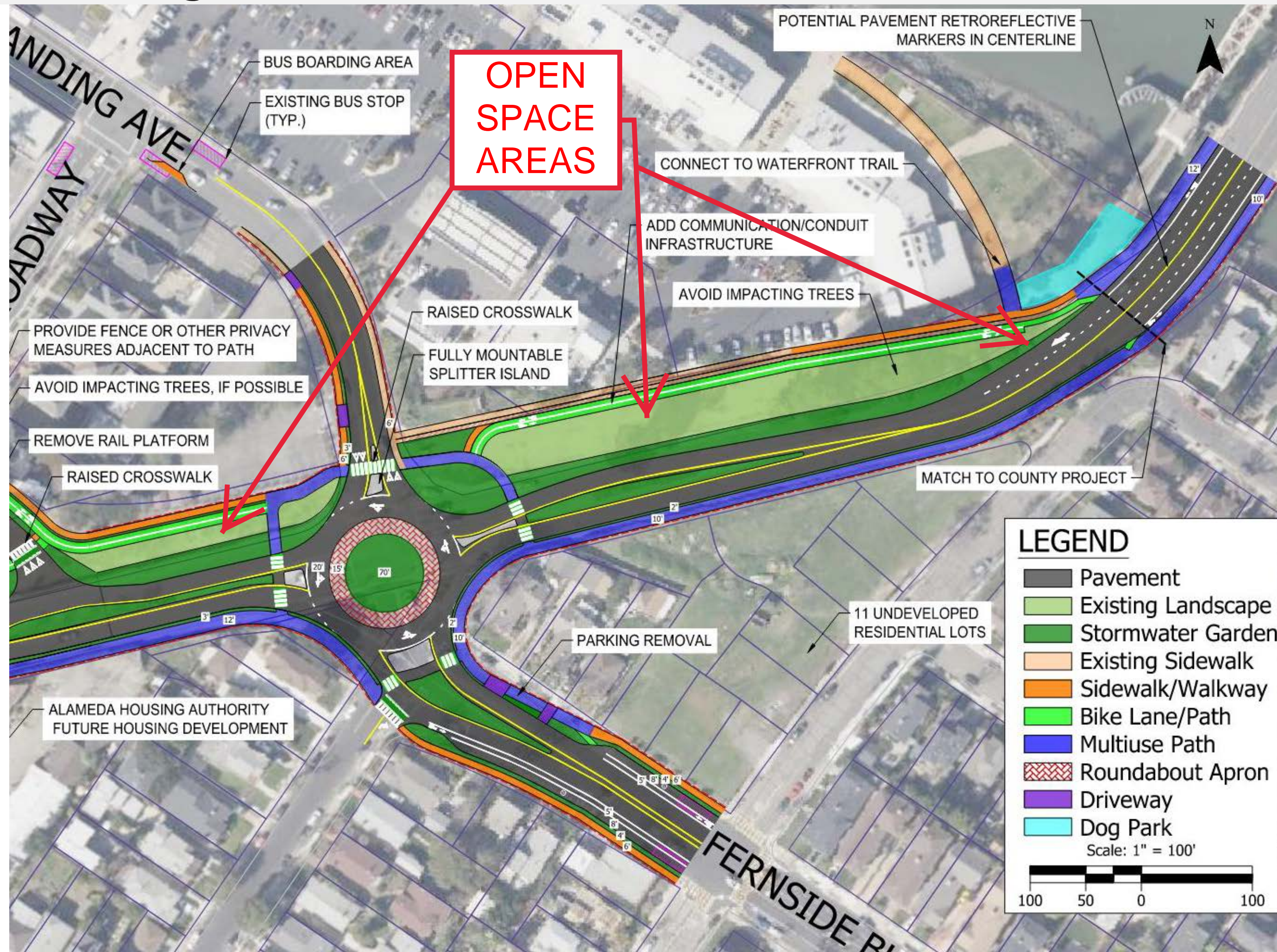


# Study Area: Cross Alameda Trail



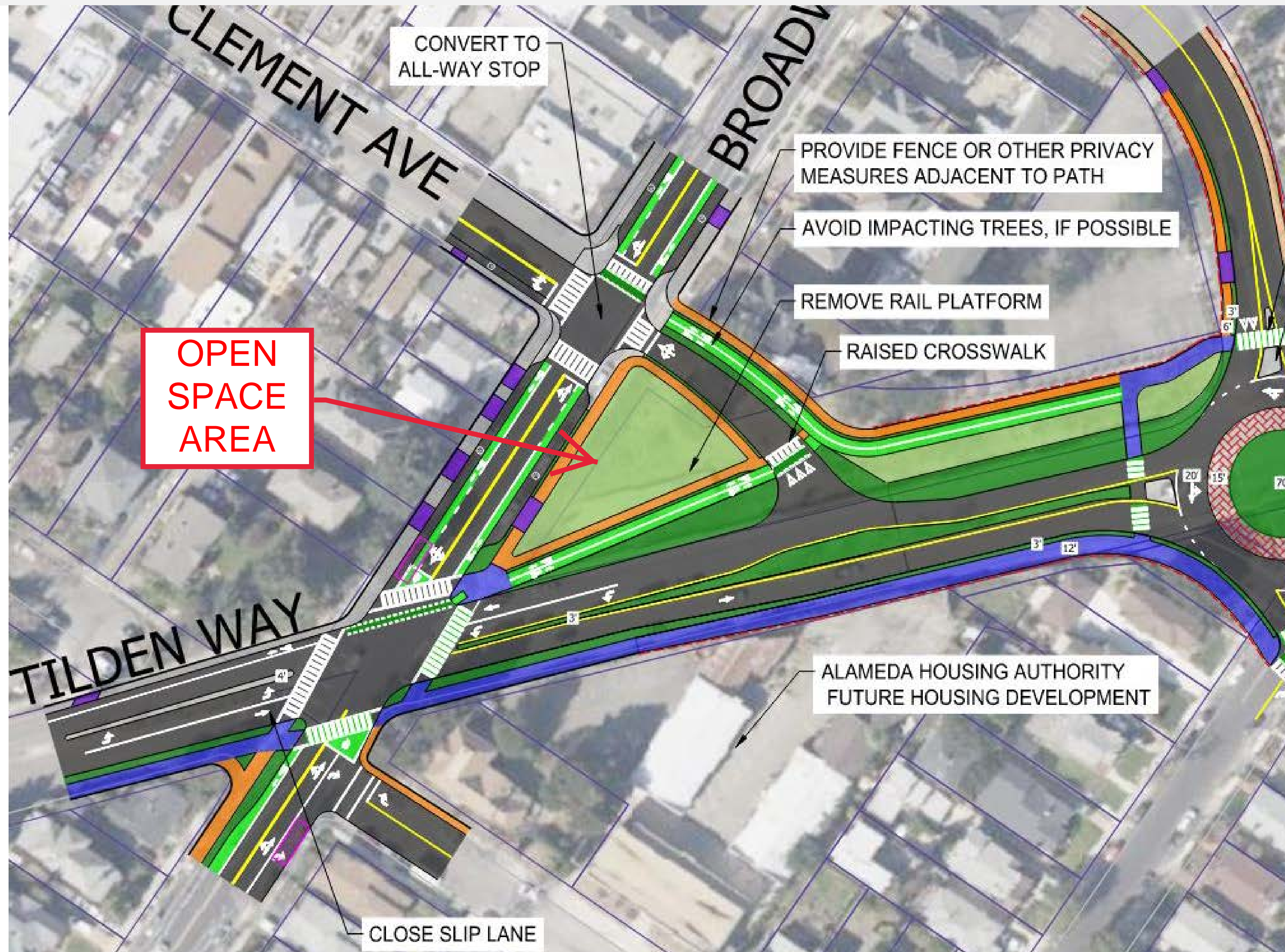


# Draft Concept Tilden/Blanding/Fernside Intersection





# Draft Concept Broadway/Tilden Intersection





# Overall Evaluation

Project Intended Outcome	Benefits
<ul style="list-style-type: none"> <li>Safety</li> </ul>	<ul style="list-style-type: none"> <li>Improvements for all modes at roundabout and Broadway/Tilden</li> <li>Reduce speeds</li> <li>Adding sidewalks and crossings</li> <li>Restricting high-conflict movements</li> <li>Reduced volume at Broadway/Blanding</li> <li>Reduces truck volumes along Park Street (High Injury corridor)</li> <li>Trucks connecting to Clement extension do not cross over CAT</li> </ul>
<ul style="list-style-type: none"> <li>Improve mobility for all roadway users</li> <li>Improve bicycle and pedestrian access</li> <li>Reduce greenhouse gas emissions</li> </ul>	<ul style="list-style-type: none"> <li>Improved biking/walking connections</li> <li>Improved bus access</li> <li>Direct truck and motor vehicle access to Clement</li> <li>Improved walking and biking conditions encourages mode shift</li> </ul>
<ul style="list-style-type: none"> <li>Flood Reduction/Landscaping</li> </ul>	<ul style="list-style-type: none"> <li>New stormwater gardens and bioretention areas</li> </ul>
<ul style="list-style-type: none"> <li>Comply with City plans and policies</li> </ul>	<ul style="list-style-type: none"> <li>Completes General Plan truck network</li> <li>Extends Cross Alameda Trail</li> </ul>



# Next Steps

- 2023: Design
- 2024: Construction
- 2025: Complete
- Project webpage:  
[www.alamedaca.gov/ClementTilden](http://www.alamedaca.gov/ClementTilden)

Gail Payne  
Senior Transportation Coordinator  
[gpayne@alamedaca.gov](mailto:gpayne@alamedaca.gov) or 510-747-6892

