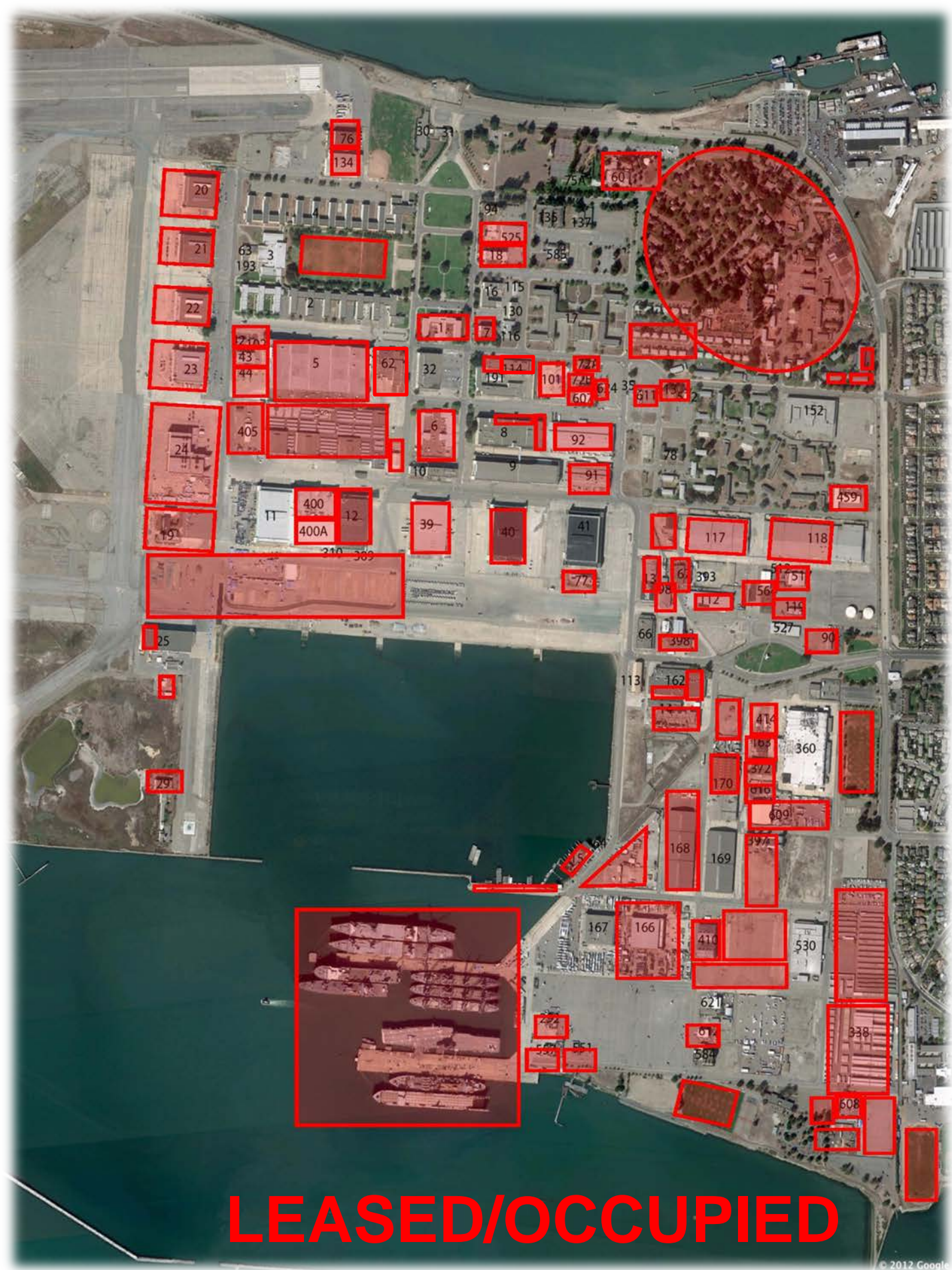


An aerial photograph of Alameda Point, showing a dense cluster of buildings, parking lots, and green spaces. The point is situated on a peninsula with water on three sides. Numerous buildings are labeled with numbers, including 20, 21, 22, 23, 24, 25, 29, 30, 31, 35, 36, 37, 38, 39, 40, 41, 42, 43, 44, 45, 46, 47, 48, 49, 50, 51, 52, 53, 54, 55, 56, 57, 58, 59, 60, 61, 62, 63, 64, 65, 66, 67, 68, 69, 70, 71, 72, 73, 74, 75, 76, 77, 78, 79, 80, 81, 82, 83, 84, 85, 86, 87, 88, 89, 90, 91, 92, 93, 94, 95, 96, 97, 98, 99, 100, 101, 102, 103, 104, 105, 106, 107, 108, 109, 110, 111, 112, 113, 114, 115, 116, 117, 118, 119, 120, 121, 122, 123, 124, 125, 126, 127, 128, 129, 130, 131, 132, 133, 134, 135, 136, 137, 138, 139, 140, 141, 142, 143, 144, 145, 146, 147, 148, 149, 150, 151, 152, 153, 154, 155, 156, 157, 158, 159, 160, 161, 162, 163, 164, 165, 166, 167, 168, 169, 170, 171, 172, 173, 174, 175, 176, 177, 178, 179, 180, 181, 182, 183, 184, 185, 186, 187, 188, 189, 190, 191, 192, 193, 194, 195, 196, 197, 198, 199, 200. The text "ALAMEDA POINT" is overlaid in large, bold, yellow letters with a black outline. The word "ALAMEDA" is on the top line and "POINT" is on the bottom line. The text is centered horizontally and vertically over the main cluster of buildings.

# ALAMEDA POINT





**LEASED/OCCUPIED**





**ACTIVE NEGOTIATIONS**



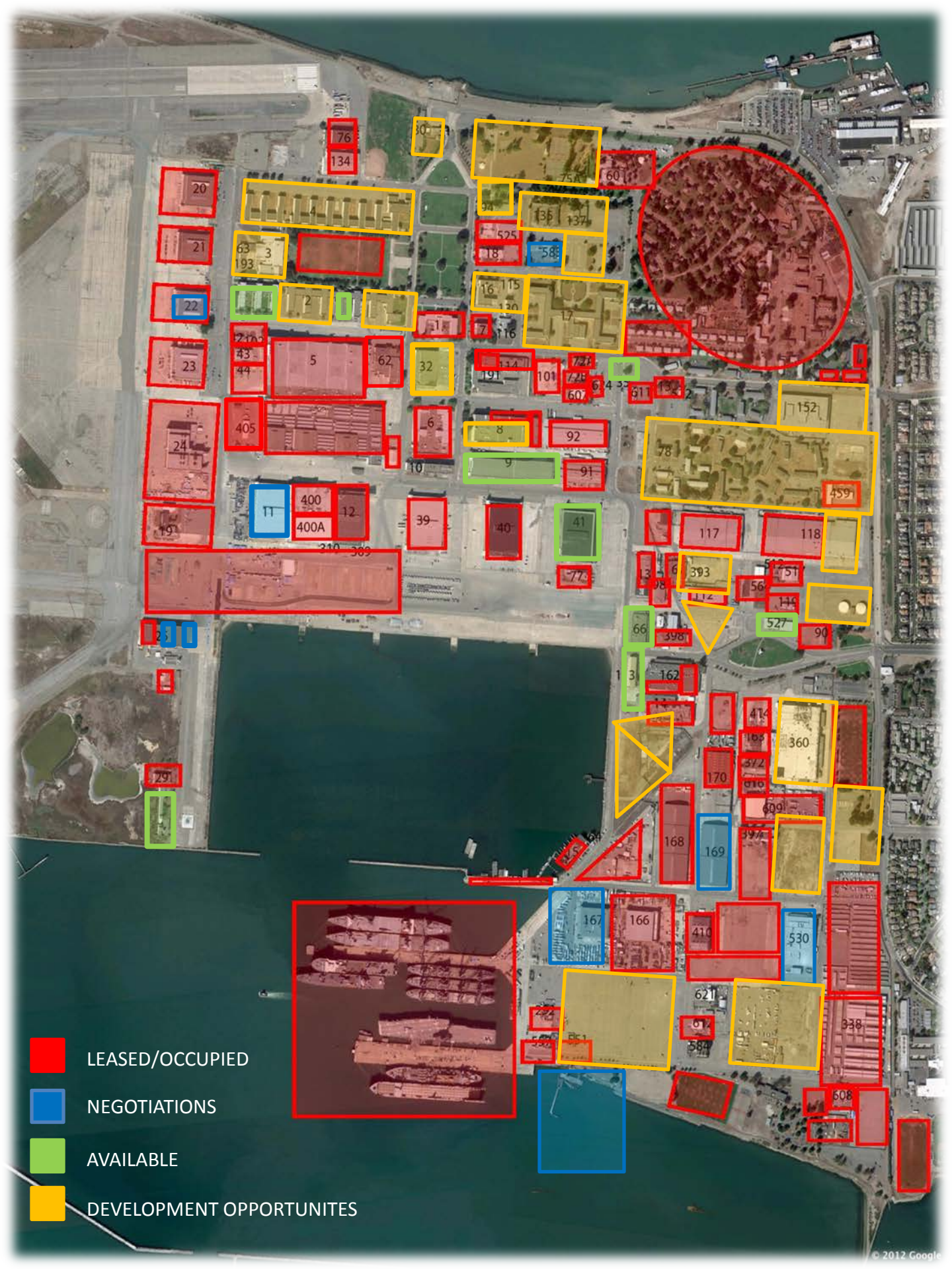






**DEVELOPMENT  
OPPORTUNITIES**





LEASED/OCCUPIED



NEGOTIATIONS



AVAILABLE



DEVELOPMENT OPPORTUNITIES