

Item 5A. Approve Harbor Bay Ferry Parking Recommendations

Public Works Department

March 25, 2015



Background



- Ferry Service: Weekdays
- First leaves at 6:30 am, last arrives at 8 pm

Concerns

Due to past Bart strikes and Bay Bridge construction, ferry usage has increased. These are the main concerns that have developed.

1. Insufficient parking supply at the ferry terminal
 2. Spillover parking in the neighborhoods
-

Phase 1 and 2



1. December 2014, improve visibility and access with red curbs
2. January 2015, install street sweeping signs

Phase 3 (Current)



Initial Recommendation #1, Adelphian Way

1. Provide 24 unrestricted parking spaces
2. Maintain 7 two-hour parking spaces

Phase 3



Initial Recommendation #2, Mecartney Road

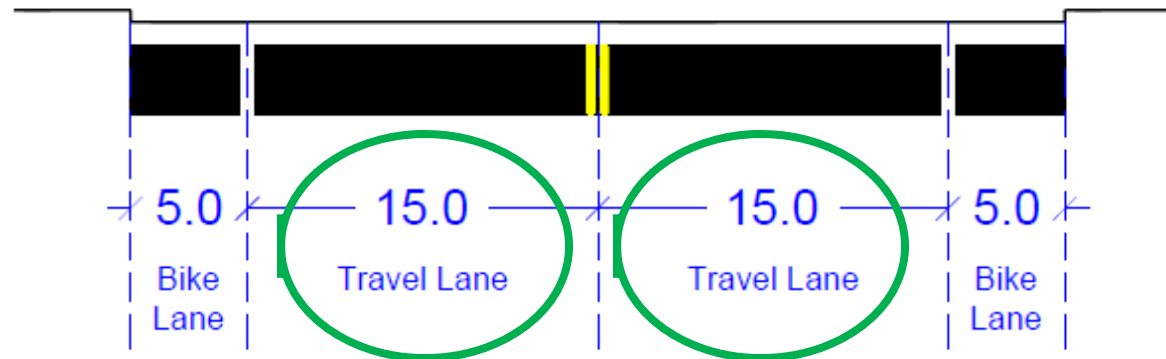
1. Provide 32 unrestricted parking spaces
2. Maintain bike lanes

Phase 3



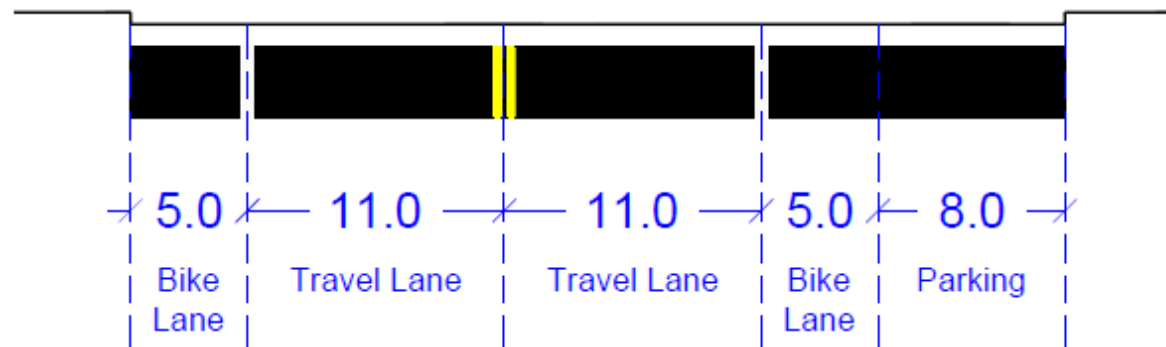
Northside
(towards
Adelphian Way)

Southside
(Ferry side)



Northside
(towards
Adelphian Way)

Southside
(Ferry side)



Ini

1.

2.

Public Outreach

1. Notified adjacent neighborhoods
2. Placed notification on barricades
3. Issued press release
4. Held a Community Meeting on February 24, 2015

Comments

1. Residents want ferry parking out of the neighborhoods
 2. 63% not in favor of Adelphian Way recommendations
 3. 84% not in favor of Mecartney Road recommendations
 4. Some would support the Adelphian Way recommendations if temporary
 5. Concerned about overnight parking on-street
-

Comments (cont.)

6. Vehicles parked in ferry parking lot overnight
 7. Request parking on Harbor Bay Parkway
 8. Community of Harbor Bay Isle Owners Association opposes both recommendations, wants enforcement of 2-hour parking
 9. Headlands HOA opposes both recommendations, enforce after an alternate parking solution is established
-

Recommendation #1

Conditional parking changes to Adelphian Way

1. Not intended to be permanent
 2. Easy solution that provides relief while longer range solutions are reviewed
 3. Conditions provided to address the concerns of the residents
-

Recommendation #1 (cont.)



No parking 10 pm to 6 am

Recommendation #1 (cont.)

Conditions:

1. If additional, sufficient off-street ferry parking provided, revert some, or all, to 2-hour parking
 2. If other improvements decrease the need for parking, revert some, or all
 3. Maintain if City, WETA, and appropriate HOA's determine it's beneficial to residents
 4. Evaluations occur no sooner than 12 months from last review/change
-

Recommendation #1 (cont.)



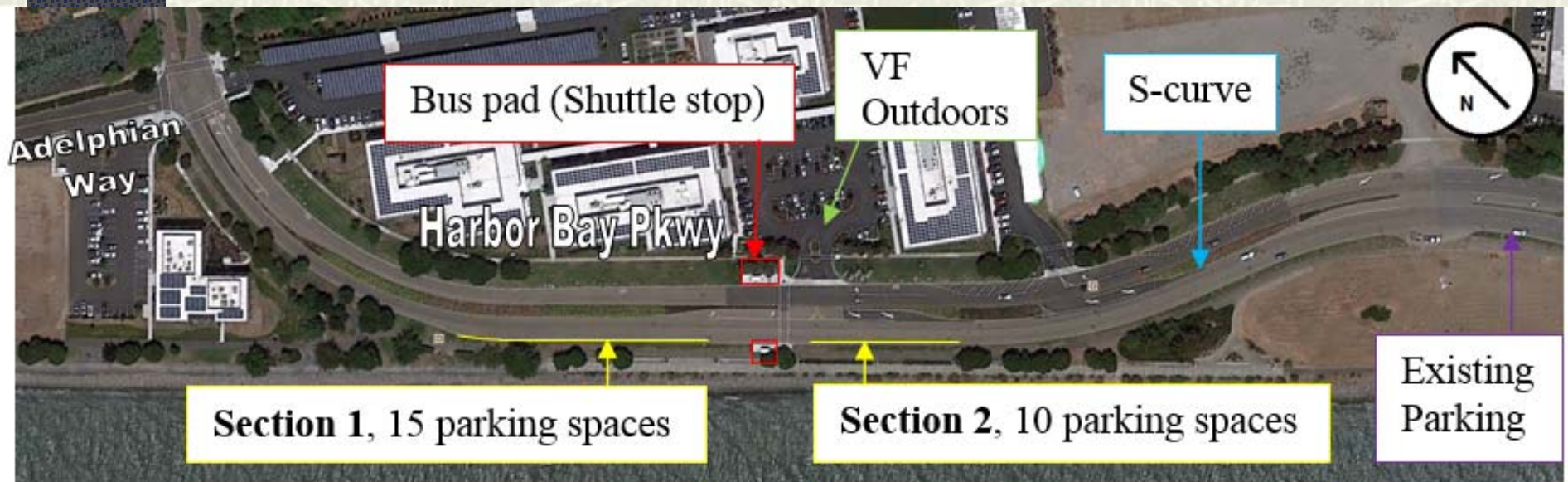
Spillover parking

Recommendation #1 (cont.)



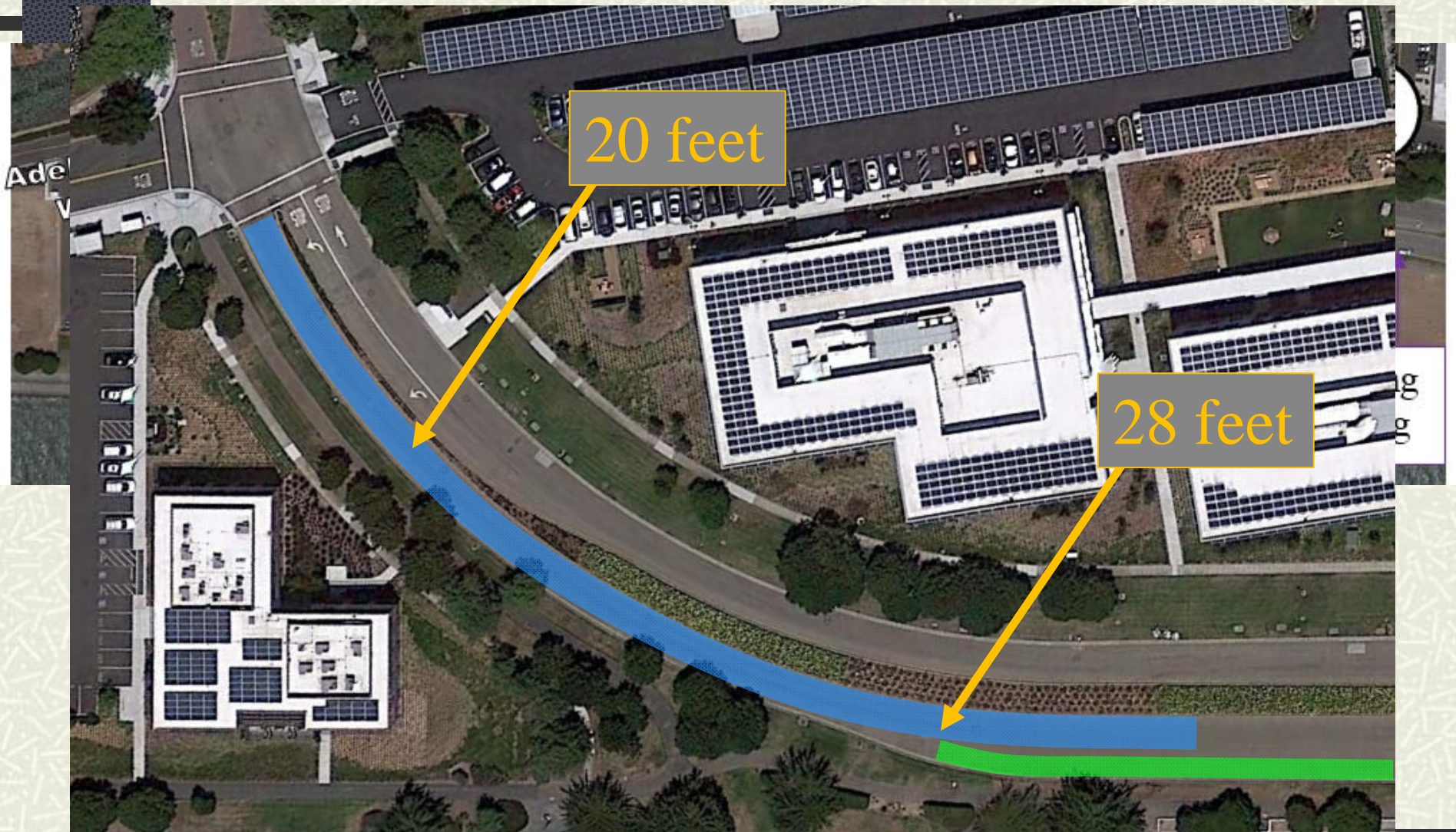
Recreational access

Recommendation #2

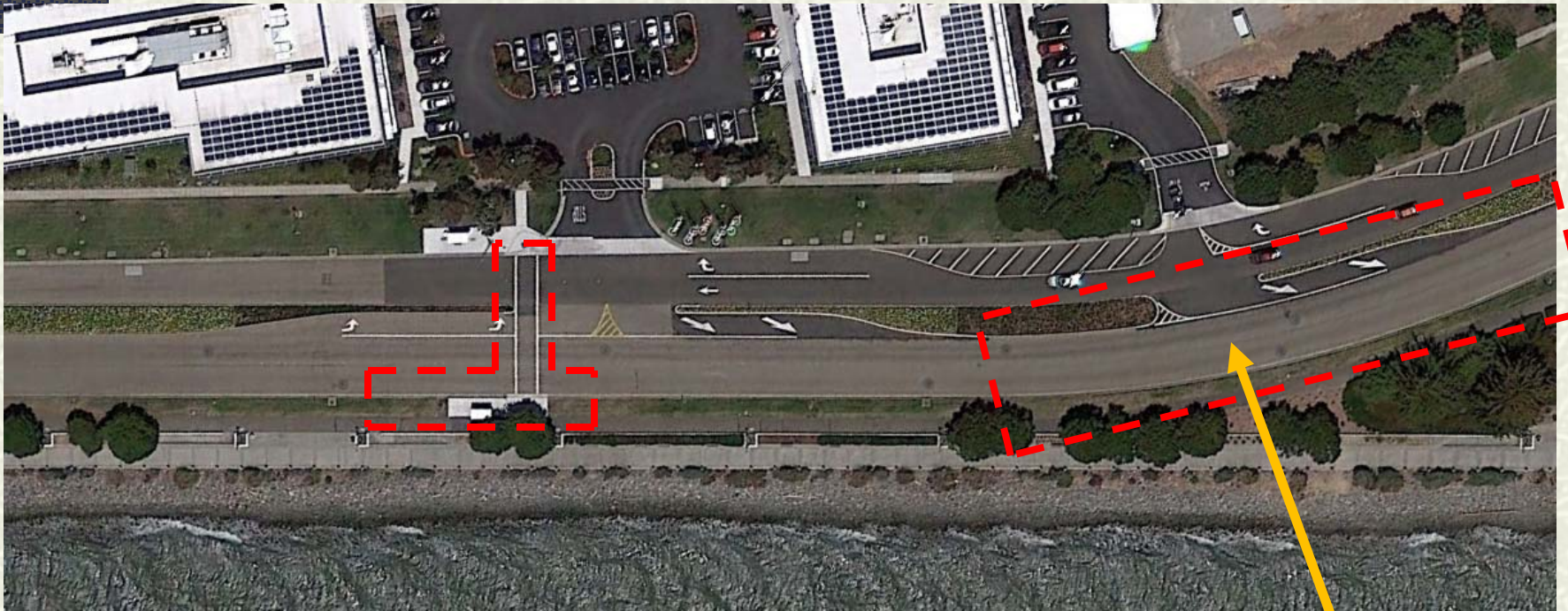


25 parking spaces total

Recommendation #2 (cont.)



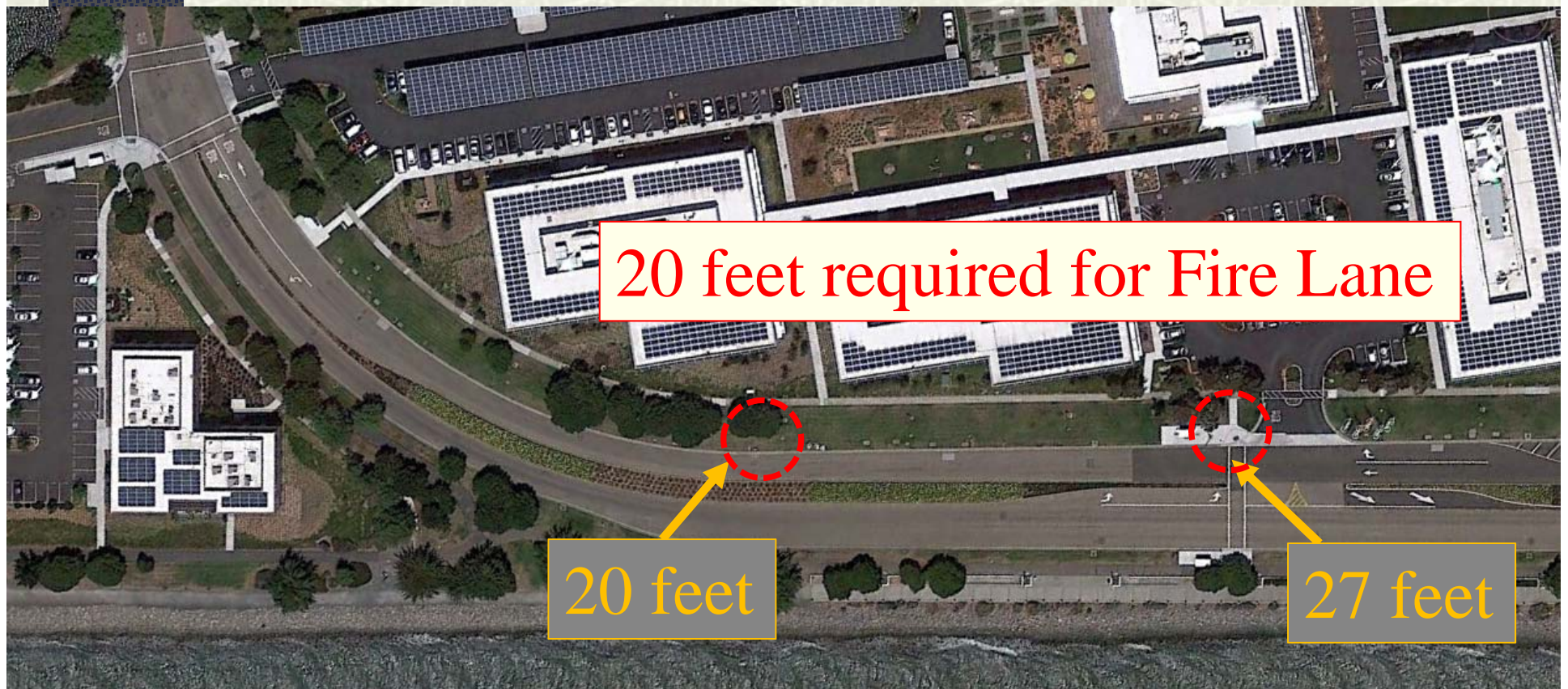
Recommendation #2 (cont.)



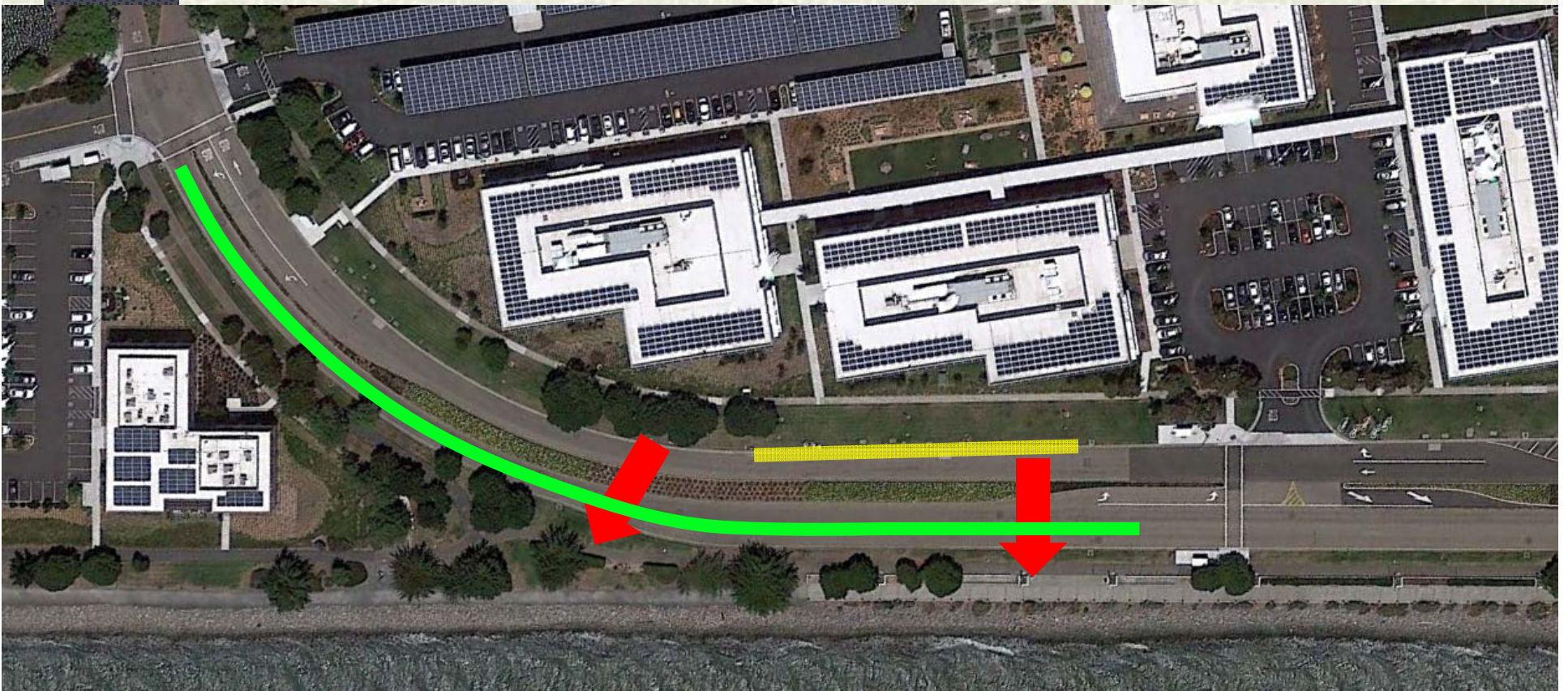
No parking areas

32 feet

Recommendation #2 (cont.)



Recommendation #2 (cont.)



Expected pedestrian crossings

Recommendation #2 (cont.)

1. No parking 10 pm to 6 am
2. Intended to be a permanent solution pending BCDC approval of the amended permit

Under Consideration

1. Motorcycle parking in parking lot
 2. Shuttle/bus
 3. Develop adjacent lot into additional parking.
Provide open field (park) in case of
disasters/emergencies
 4. Charge for parking in the parking lot
 5. Prohibit overnight parking in the parking lot
-

Under Consideration (cont.)

6. Residential parking permits
7. All-way stop at Adelphian/Sweet
8. All-way stop at Adelphian/Mecartney
9. All-way stop at Mecartney/Sharon

Reviewed Items

1. The following items have been reviewed.
2. Staff does not recommend the following items.
3. No Transportation Commission action is necessary

Mecartney Road

Initial Recommendation #2

Staff does not recommend due to:

1. Significant feedback not in favor
 2. Potential motor vehicle-bicycle conflicts
 3. Potential impacts to circulation and congestion
-

Adelphian Way, One-Way



Conclusion

Staff recommends the following:

1. Conditional changes to Adelphian Way with intent to revert to two-hour parking, in the future, as needed.
 - a. 24 unrestricted parking spaces
 - b. 7 two-hour parking spaces
 - c. No parking 10 pm to 6 am
 2. Add 25 unrestricted parking spaces to Harbor Bay Parkway. No parking 10 pm to 6 am
-

Next Steps

1. All City approved recommendations are ultimately subject to the approval of BCDC
2. Appeals of TC recommendations, or calls for review, would be heard by City Council