

## Matchline B

## Matchline A

## Remove white stripe

Remove white stripe

- Remove white stripe

10 unrestricted parking spaces  
(along straight portion)

Harbor Bay Pkwy

23 unrestricted parking spaces (along S-Curve)

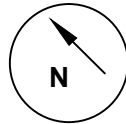
No parking zone  
to maintain visibility  
for the driveway of  
a future development

### Legend

Light Blue	Face of curb
Light Blue	Existing white striping
Yellow	Existing yellow striping
Gray	Removal of existing striping
Red	Recommended changes
Green	Matchlines and comments

BENCH MARK	REFERENCES				CITY OF ALAMEDA CALIFORNIA ENGINEERING DEPARTMENT	APPROVED BY
		NO.	REVISED	BY	APP.	CITY ENGINEER
		DESIGNED <i>AT</i>				DATE
		DRAWN <i>AT</i>				SHEET <b>2</b> OF <b>3</b>
		CHECKED <i>VP</i>				DWG.
		DATE <i>4/2/15</i>		SCALE <i>NIS</i>		CASE
		<b>EXHIBIT 9</b> <b>FINAL RECOMMENDATIONS FOR</b> <b>HARBOR BAY PARKWAY</b> <b>CONCEPTUAL DRAWING</b>				





1:50 Scale



### Legend

Light Blue	Face of curb
Light Blue	Existing white striping
Yellow	Existing yellow striping
Gray	Removal of existing striping
Red	Recommended changes
Green	Matchlines and comments

BENCH MARK		REFERENCES				CITY OF ALAMEDA CALIFORNIA ENGINEERING DEPARTMENT				APPROVED BY	
										CITY ENGINEER	
						EXHIBIT 9				DATE	
						FINAL RECOMMENDATIONS FOR				SHEET 3 OF 3	
						HARBOR BAY PARKWAY				DWG.	
						CONCEPTUAL DRAWING				CASE	