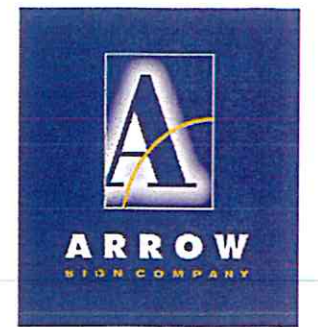


A.1 SIGN ELEVATION

SCALE: 3/4" = 1'-0"

One (1) D/F Illuminated Tenant Monument Sign. NOTE: Font used is (EXOTC 350 BD BT)

ITEM	DESCRIPTION	VENDOR	SPECIFICATION
Cap	Aluminum	Matthews	ICI 1136 30GG15/195 Newfoundland Green
Cabinet	Aluminum	Dunn Edwards w/Texcote	DE 6170 Rice Bowl
ID Copy (Marina Village)	Aluminum FCO	Matthews	ICI 1136 30GG15/195 Newfoundland Green
Shopping Center Copy	Vinyl	3M	7725-10 White
Tenant Cabinets	Routed Aluminum Pan	Dunn Edwards	DE 5187 Weathered Saddle
Face (Backer)	3/16"	Sabik	White
Base	Brick Veneer	H.C. Muddox	To Match Close to Building Brick
Base Cap	Aluminum	Matthews	PM Warm Gray #5, satin
Illumination	Fluorescent		Per engineering



1051 46th Avenue
Oakland, Ca 94601
T. 510.533.7693
F. 510.533.0815
www.arrowsigncompany.com

Project Marina Village Shopping Center

Marina Village Parkway, Alameda, Ca

Date:
10.07.2013

Sales:
☐ Tom Salmon

Design:
☐ Randy Tucker

File Name/Location:
2013/M/Marina Village Monument Signs 1

Rev.	Date	Description
L	10.03.14	Removed Copy Added Standard Font
M	10.06.14	Changed Sign Callout Name
N	10.27.14	Added New Letter Style to Signs
O	10.30.14	Revised Sign Material Callouts
P	11.10.14	Revised Paint Callouts
Q	11.13.14	Revised Callouts
R	11.14.14	Correct base spec

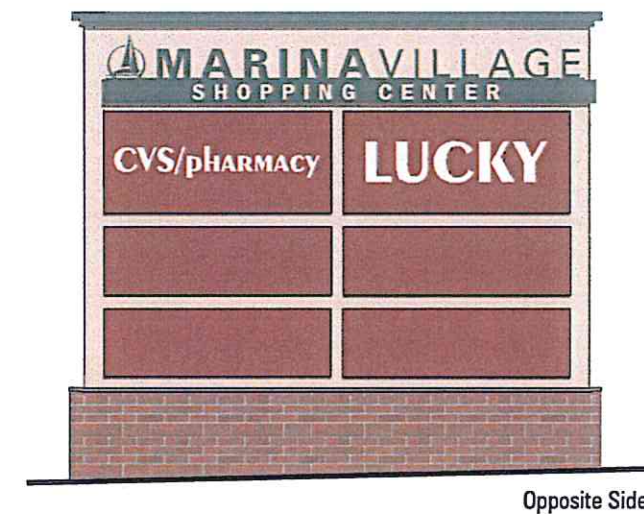
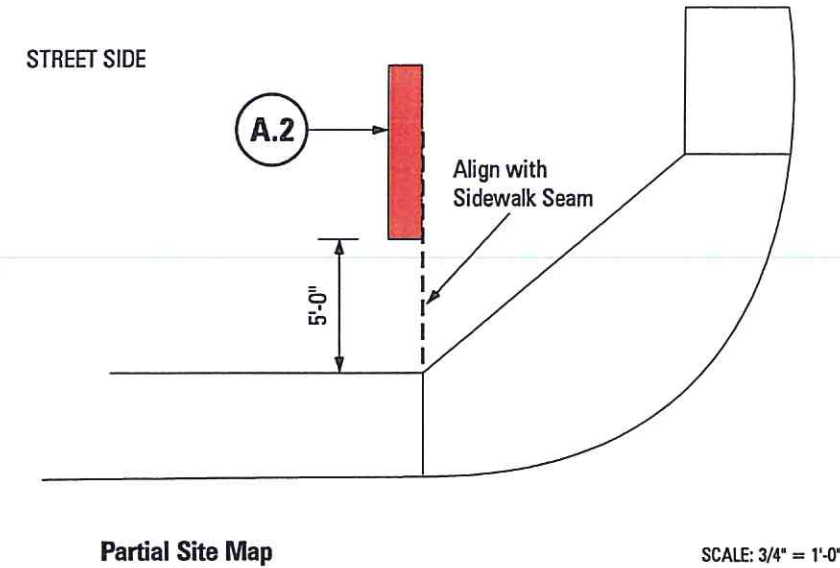
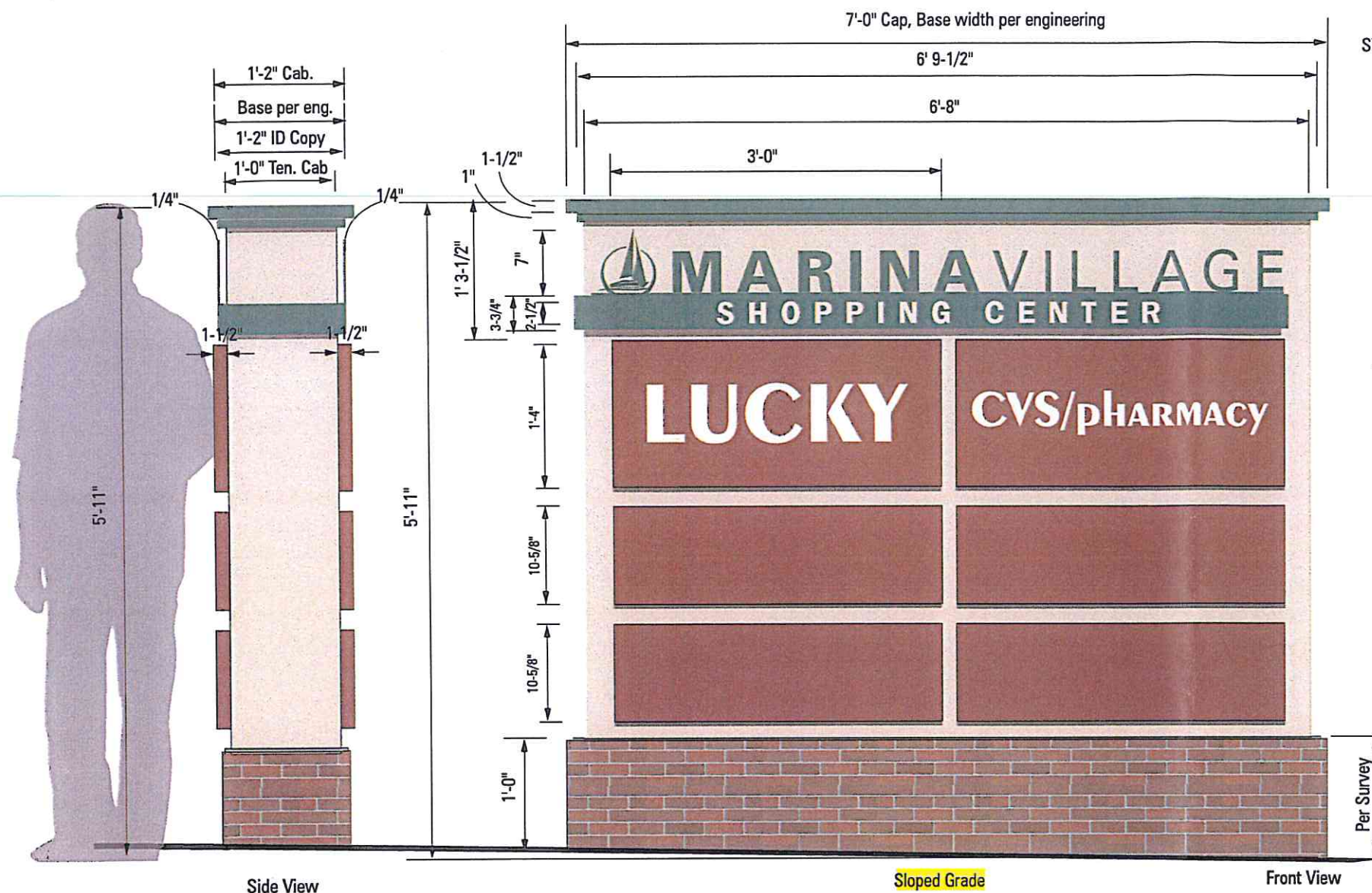
Customer Approval

This drawing is a representation of colors and may not accurately depict final color of product. Refer to paint swatch or material samples for color reference.

ALL RIGHTS RESERVED
This is an original unpublished drawing prepared for you by Arrow Sign Co. in a sign program designed for your business. It is not to be shown to anyone outside of your organization nor to be reproduced, copied or exhibited in any fashion.

131007

Sheet 1

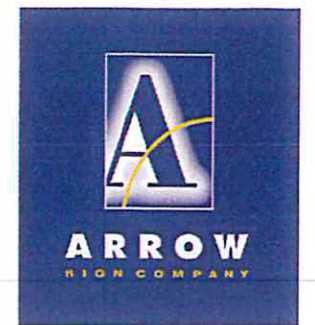


A.2 SIGN ELEVATION

SCALE: 3/4" = 1'-0"

One (1) D/F Illuminated Tenant Monument Sign. NOTE: Font used is (EXOTC 350 BD BT)

ITEM	DESCRIPTION	VENDOR	SPECIFICATION
Cap	Aluminum	Matthews	ICI 1136 30GG15/195 NewFoundland Green
Cabinet	Aluminum	Dunn Edwards w/Textcote	DE 6170 Rice Bowl
ID Copy (Marina Village)	Aluminum FCO	Matthews	ICI 1136 30GG15/195 NewFoundland Green
Shopping Center Copy	Vinyl	3M	7725-10 White
Tenant Cabinets	Routed Aluminum Pan	Dunn Edwards	DE 5187 Weathered Saddle
Face (Backer)	3/16"	Sabik	White
Base	Brick Veneer	H.C. Muddox	To Match Close to Building Brick
Base Cap	Aluminum	Matthews	PMS Warm Gray #5, satin
Illumination	Fluorescent		Per engineering



1051 46th Avenue
Oakland, Ca 94601
T. 510.533.7693
F. 510.533.0815
www.arrowsigncompany.com

Project Marina Village Shopping Center

Marina Village Parkway, Alameda, Ca

Date:
10.07.2013

Sales:
☐ Tom Salmon

Design:
☐ Randy Tucker

File Name/Location:
2013/M/Marina Village Monument Signs 1

Rev.	Date	Description
A	10.06.14	Changed Sign Callout Name
B	10.27.14	Added New Letter Style to Signs
C	10.30.14	Revised Sign Material Callouts
D	11.10.14	Revised Paint Callouts
E	11.13.14	Revised Callouts
F	11.14.14	Correct base spec

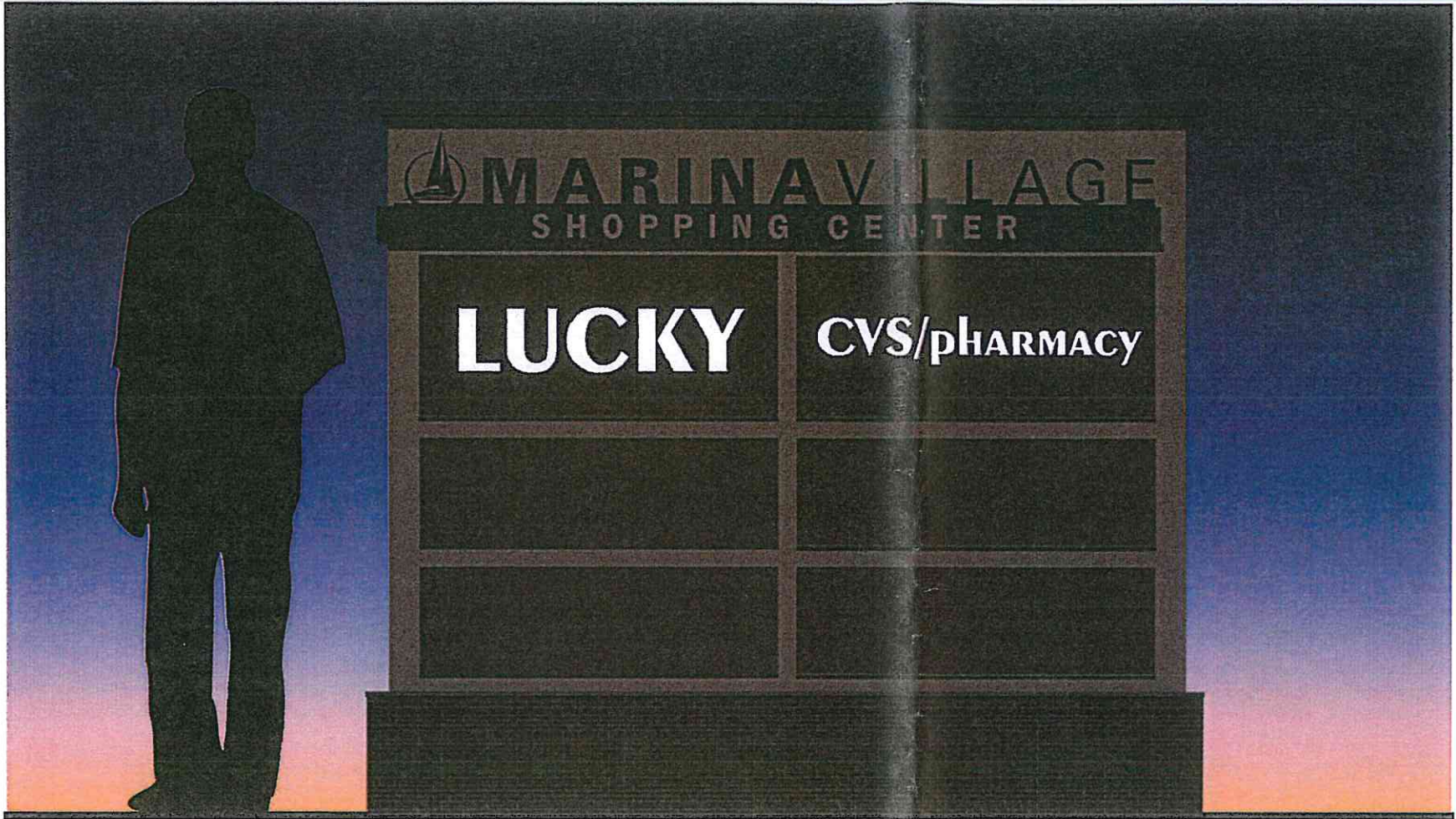
Customer Approval

This drawing is a representation of colors and may not accurately depict final color of product. Refer to paint swatch or material samples for color reference.

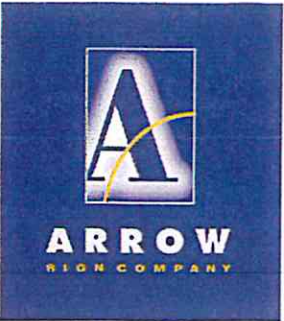
ALL RIGHTS RESERVED
This is an original unpublished drawing prepared for you by Arrow Sign Co. in a sign program designed for your business. It is not to be shown to anyone outside of your organization nor to be reproduced, copied or exhibited in any fashion.

131007

Sheet 2



Simulated Night View



1051 46th Avenue
Oakland, Ca 94601
T. 510.533.7693
F. 510.533.0815
www.arrowsigncompany.com

Project
Marina Village Shopping Center
Marina Village Parkway, Alameda, Ca

Date:
10.07.2013

Sales:
☐ Tom Salmon

Design:
☐ Randy Tucker

File Name/Location:
2013/M/Marina Village Monument Signs 1

Rev.	Date	Description

Customer Approval

This drawing is a representation of colors and may not accurately depict final color of product. Refer to paint swatch or material samples for color reference.
ALL RIGHTS RESERVED
This is an original unpublished drawing prepared for you by Arrow Sign Co. in a sign program designed for your business. It is not to be shown to anyone outside of your organization nor to be reproduced, copied or exhibited in any fashion.

B.1 SIGN ELEVATION

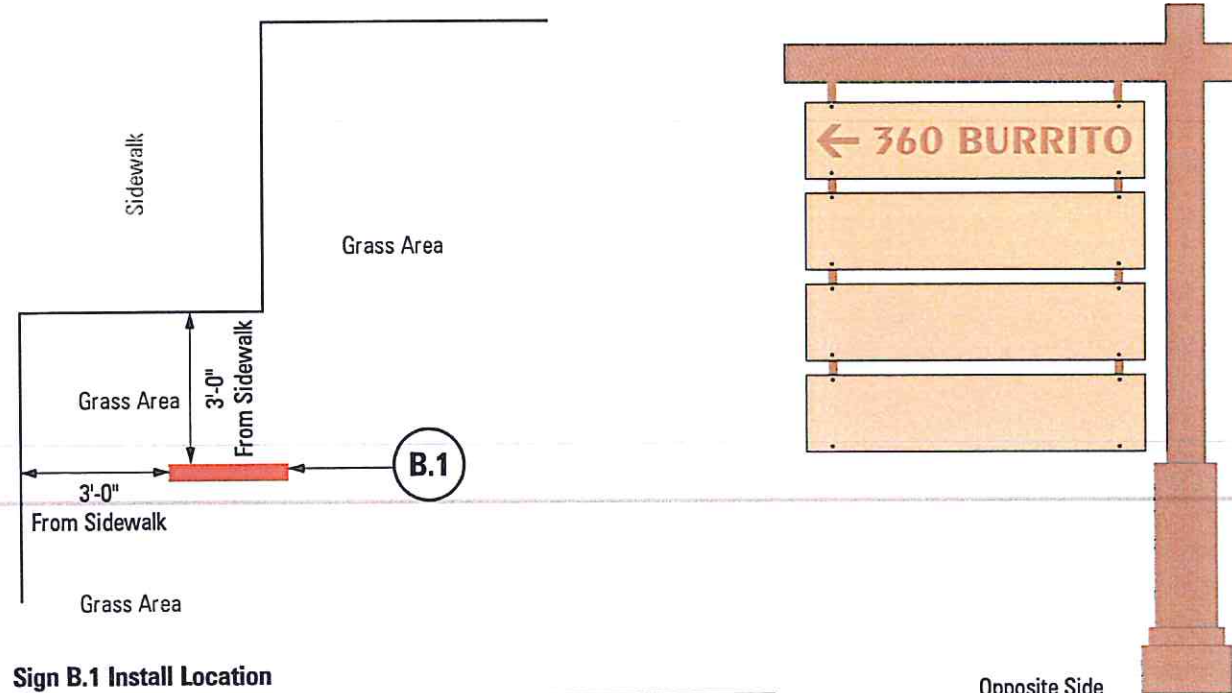
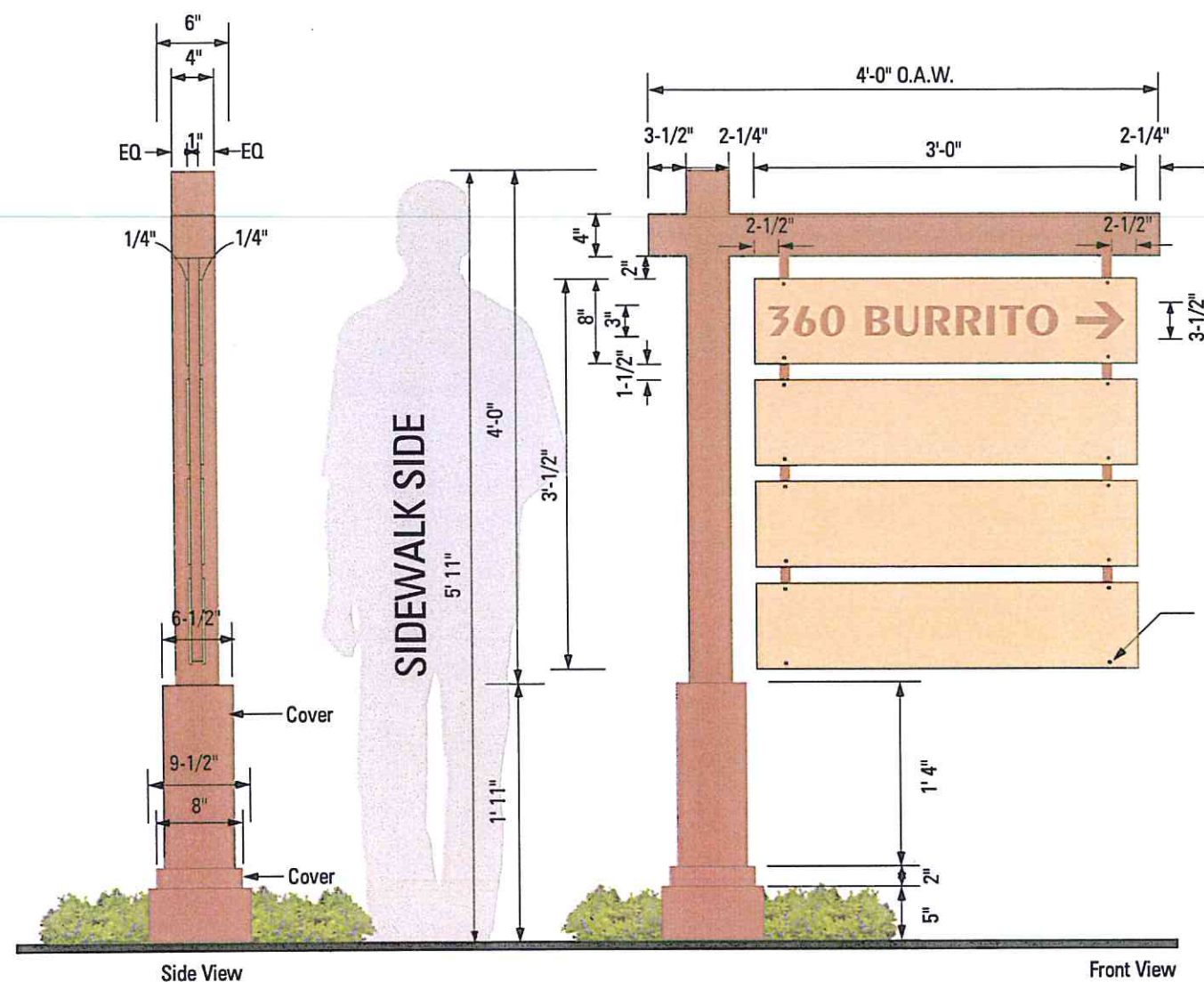
SCALE: 3/4" = 1'-0"

One (1) D/F Tenant ID Sign

ITEM	DESCRIPTION	VENDOR	SPECIFICATION
Post	Aluminum	Matthews	To Match PMS 464
Vertical Brackets	Aluminum	Matthews	To Match PMS 464
Tenant Panels	Aluminum	3M	7725-99 Fawn
Tenant Copy	Vinyl	3M	7725-39 Tan
Post base	Aluminum	Matthews	To Match PMS 464

NOTE: Font used is (EXOTC 350 BD BT)

Signs to be Screwed onto Frame



Sign Location B.1



1051 46th Avenue
Oakland, Ca 94601
T. 510.533.7693
F. 510.533.0815
www.arrowsigncompany.com

Project Marina Village Shopping Center

Marina Village Parkway, Alameda, Ca

Date:

10.07.2013

Sales:

☐ Tom Salmon

Design:

☐ Randy Tucker

File Name/Location:

2013/M/Marina Village Monument Signs 1

Rev.	Date	Description
E	10.01.14	Added Partial Site Map
F	10.03.14	Updated Tenant Copy
G	10.27.14	Added New Letter Style to Signs
H	10.30.14	Revised Sign Material Callouts
I	11.10.14	Added Note
J	11.13.14	Adjusted Measurements
K	11.14.14	Change height

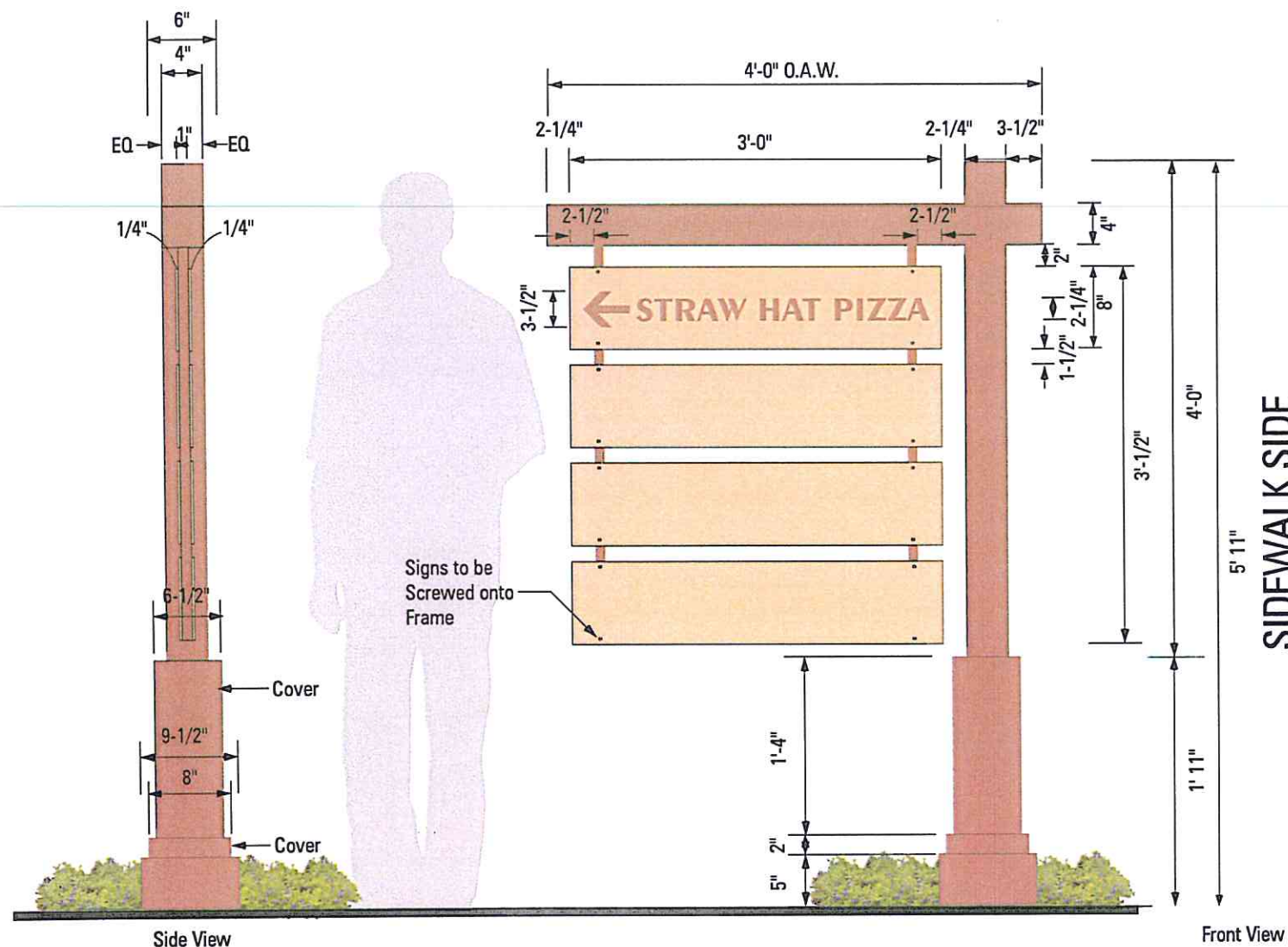
Customer Approval

This drawing is a representation of colors and may not accurately depict final color of product. Refer to paint swatch or material samples for color reference.

ALL RIGHTS RESERVED
This is an original unpublished drawing prepared for you by Arrow Sign Co. in a sign program designed for your business. It is not to be shown to anyone outside of your organization nor to be reproduced, copied or exhibited in any fashion.

131007

Sheet 4



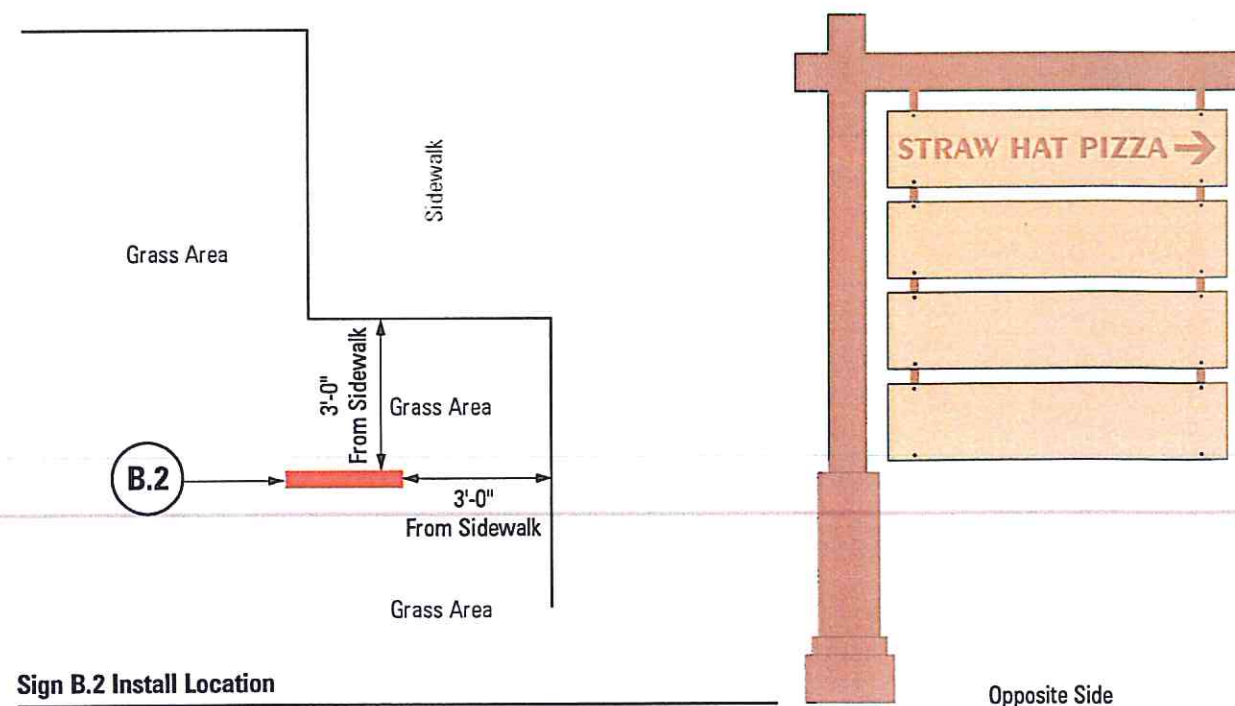
B.2 SIGN ELEVATION

SCALE: 3/4" = 1'-0"

One (1) D/F Tenant ID Sign

ITEM	DESCRIPTION	VENDOR	SPECIFICATION
Post	Aluminum	Matthews	To Match PMS 464
Vertical Brackets	Aluminum	Matthews	To Match PMS 464
Tenant Panels	Aluminum	3M	7725-99 Fawn
Tenant Copy	Vinyl	3M	7725-39 Tan
Post base	Aluminum	Matthews	To Match PMS 464

NOTE: Font used is (EXOTC 350 BD BT)



Sign Location B.2



1051 46th Avenue
Oakland, Ca 94601
T. 510.533.7693
F. 510.533.0815
www.arrowsigncompany.com

Project Marina Village Shopping Center

Marina Village Parkway, Alameda, Ca

Date:
10.07.2013

Sales:
☐ Tom Salmon

Design:
☐ Randy Tucker

File Name/Location:
2013/M/Marina Village Monument Signs 1

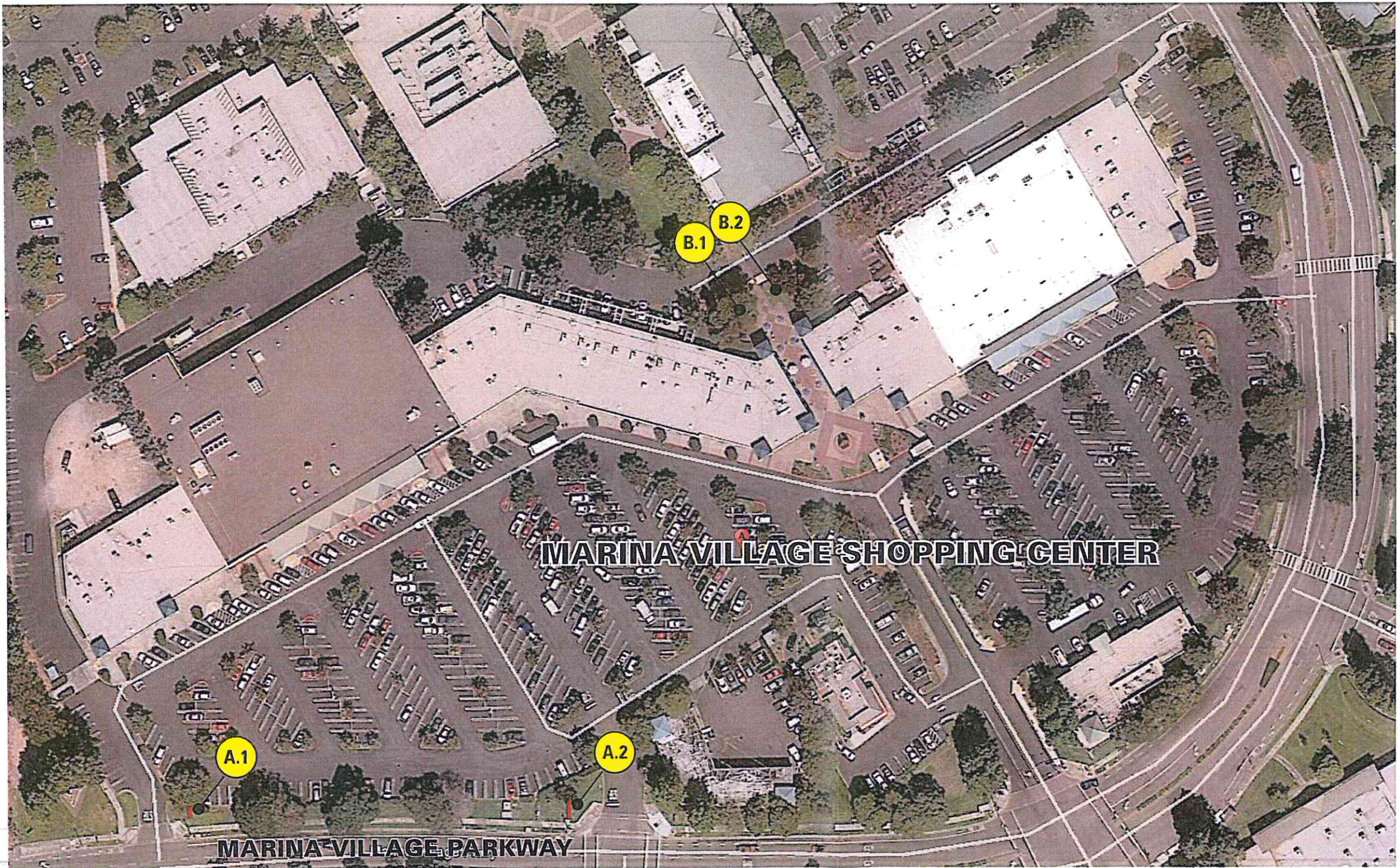
Rev.	Date	Description
E	10.01.14	Added Partial Site Map
F	10.03.14	Updated Tenant Copy
G	10.27.14	Added New Letter Style to Signs
H	10.30.14	Revised Sign Material Callouts
I	11.10.14	Revised Sign
J	11.10.14	Revised Sign
K	11.14.14	Change height

Customer Approval

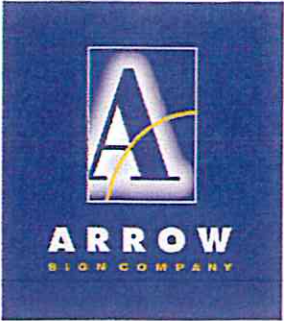
This drawing is a representation of colors and may not accurately depict final color of product. Refer to paint swatch or material samples for color reference.

ALL RIGHTS RESERVED
This is an original unpublished drawing prepared for you by Arrow Sign Co. in a sign program designed for your business. It is not to be shown to anyone outside of your organization nor to be reproduced, copied or exhibited in any fashion.

131007



Site Map



1051 46th Avenue
Oakland, Ca 94601
T. 510.533.7693
F. 510.533.0815
www.arrowsigncompany.com

Project
Marina Village Shopping Center
Marina Village Parkway, Alameda, Ca

Date:
10.07.2013

Sales:
☐ Tom Salmon

Design:
☐ Randy Tucker

File Name/Location:
2013/M/Marina Village Monument Signs 1

Rev.	Date	Description
A	12.09.13	Updated Site Map
B	06.04.14	Updated Site Map
D	09.30.14	Removed Sign C

Customer Approval

This drawing is a representation of colors and may not accurately depict final color of product. Refer to paint swatch or material samples for color reference.

ALL RIGHTS RESERVED
This is an original unpublished drawing prepared for you by Arrow Sign Co. in a sign program designed for your business. It is not to be shown to anyone outside of your organization nor to be reproduced, copied or exhibited in any fashion.