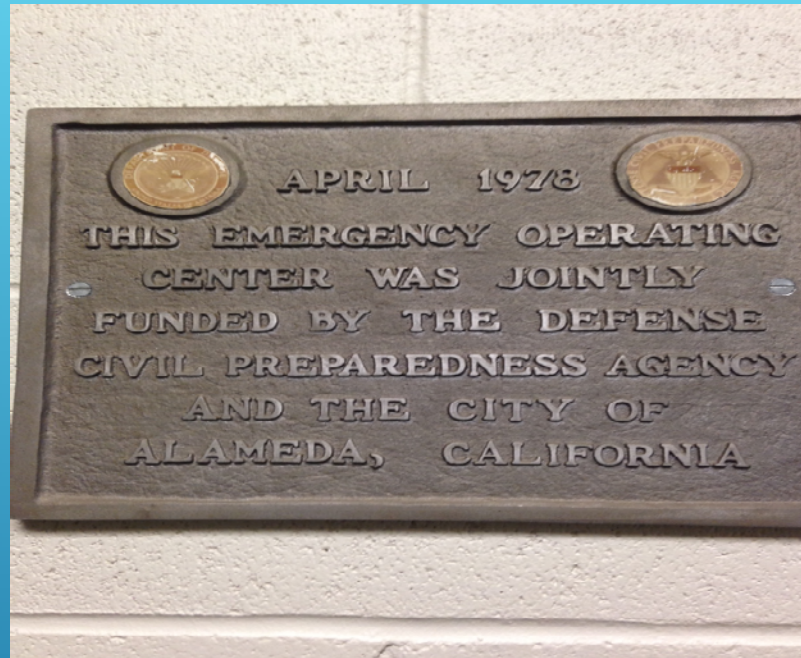


EMERGENCY OPERATIONS CENTER

Past, Present, and Future



CURRENT
EMERGENCY OPERATIONS CENTER (EOC)
BUILT IN 1978



CURRENT EOC = LINE UP ROOM FOR POLICE
FEMA CAPACITY - 16



HALLWAY & STAIRS SERVE AS OVERFLOW
FOR THE EOC



CURRENT STORAGE AND EQUIPMENT
AREA FOR THE EOC.



CURRENT STORAGE AND EQUIPMENT
AREA FOR THE EOC.



SATELLITES AND ANTENNAE ON ROOF TOP OF THE
POLICE DEPT

CONDUITS ARE AT FULL CAPACITY WITH NO
ROOM FOR NEW TECHNOLOGY.



ENTRANCE OF OLD FIRE STATION 3

SEISMICALLY UNSAFE AND NO LONGER IN
USE BY THE FIRE DEPARTMENT STAFF.



OLD FIRE STATION 3 - TOO SMALL FOR
LARGER TRUCKS



SIGNAGE DIRECTING THE PUBLIC TO
CURRENT LOCATION OF FIRE STATION 3
IN HOUSE NEXT DOOR



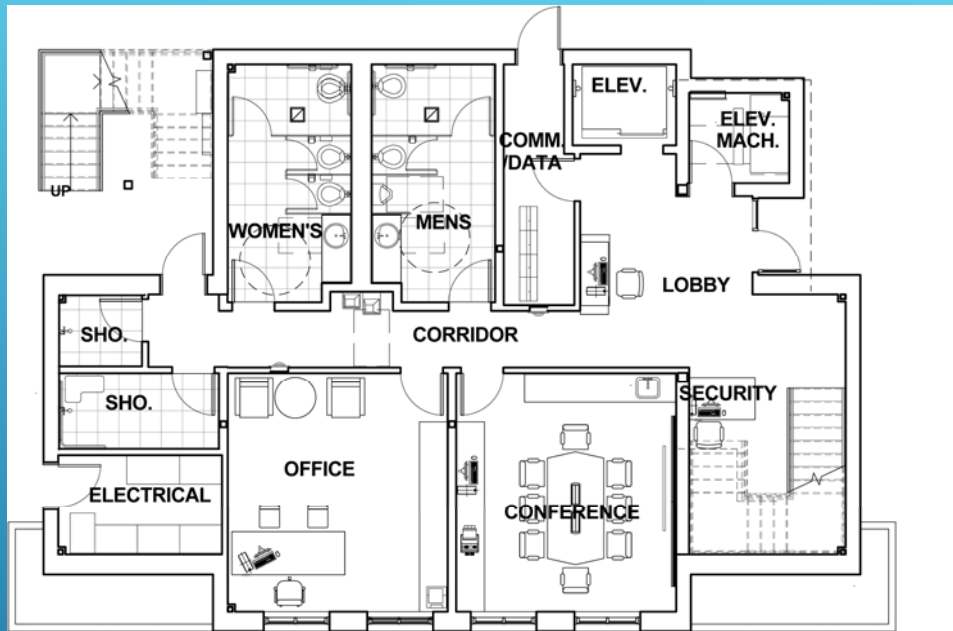
FRONT ENTRANCE TO CURRENT FIRE
STATION 3 - RENTED HOUSE NEXT DOOR



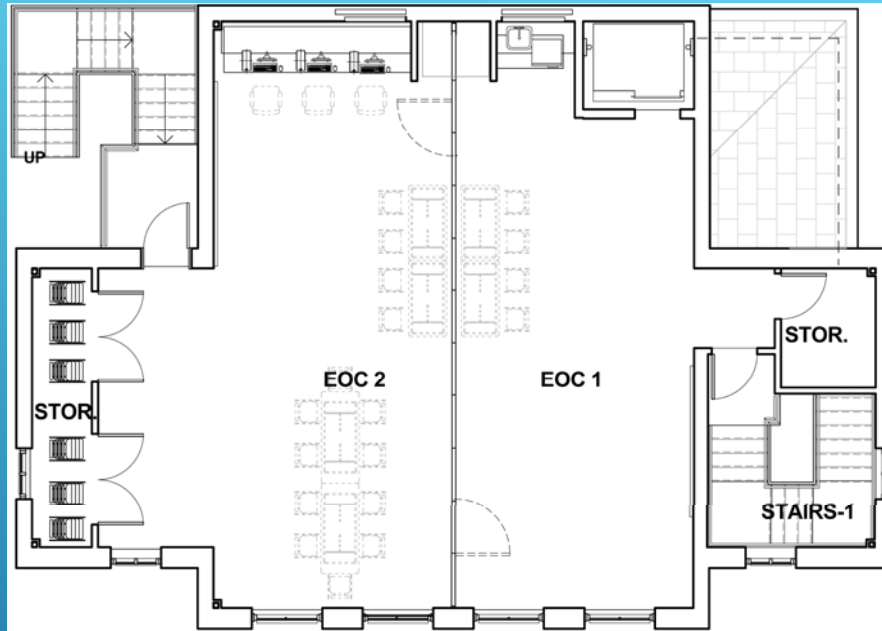
KITCHEN AND WORK STATIONS COMBINED



PANORAMIC VIEW OF FIRE STATION 3 (OLD FIREHOUSE, ENGINE BAY, AND RENTED HOUSE).



PROPOSED NEW EOC – FIRST FLOOR



PROPOSED NEW EOC – SECOND FLOOR –
OPEN FLOOR PLAN FOR FLEXIBILITY

FEMA CAPACITY – 35