

Municipal Operations

• Six city facilities
• 250 vehicles and equipment, 300 buildings

Sidewalks

26 miles of sidewalk

Sewers & Storm Drains

Sewers

Maintain 180 miles of sewer main,
2,950 manholes and 34 pump stations

Storm Drains

15 miles of storm drain
1,000 manholes and 10 pump stations

Trash & Recycling

Alamedans are succeeding on diversion

Trees

Maintain the municipal tree fund of
15,000 trees and 10 acres

Streets & Transportation

Maintain 125 miles of streets

Resurfacing

10,000 square feet of asphalt
10,000 square feet of concrete

Traffic signals

Maintain 10 traffic signals

2 new miles of sidewalk, 40 miles total

City of Alameda
**Public Works
Department**
2014-2015
ANNUAL REPORT

Streets & Transportation

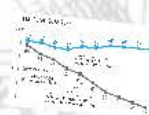
Maintain 125 miles of streets

Broadway Repair

"Only in Alameda" Service



Resurfacing



Traffic signals

Maintain 87 signalized intersections



2 new miles of bikeways,
40 miles total



2 miles resurfaced

66

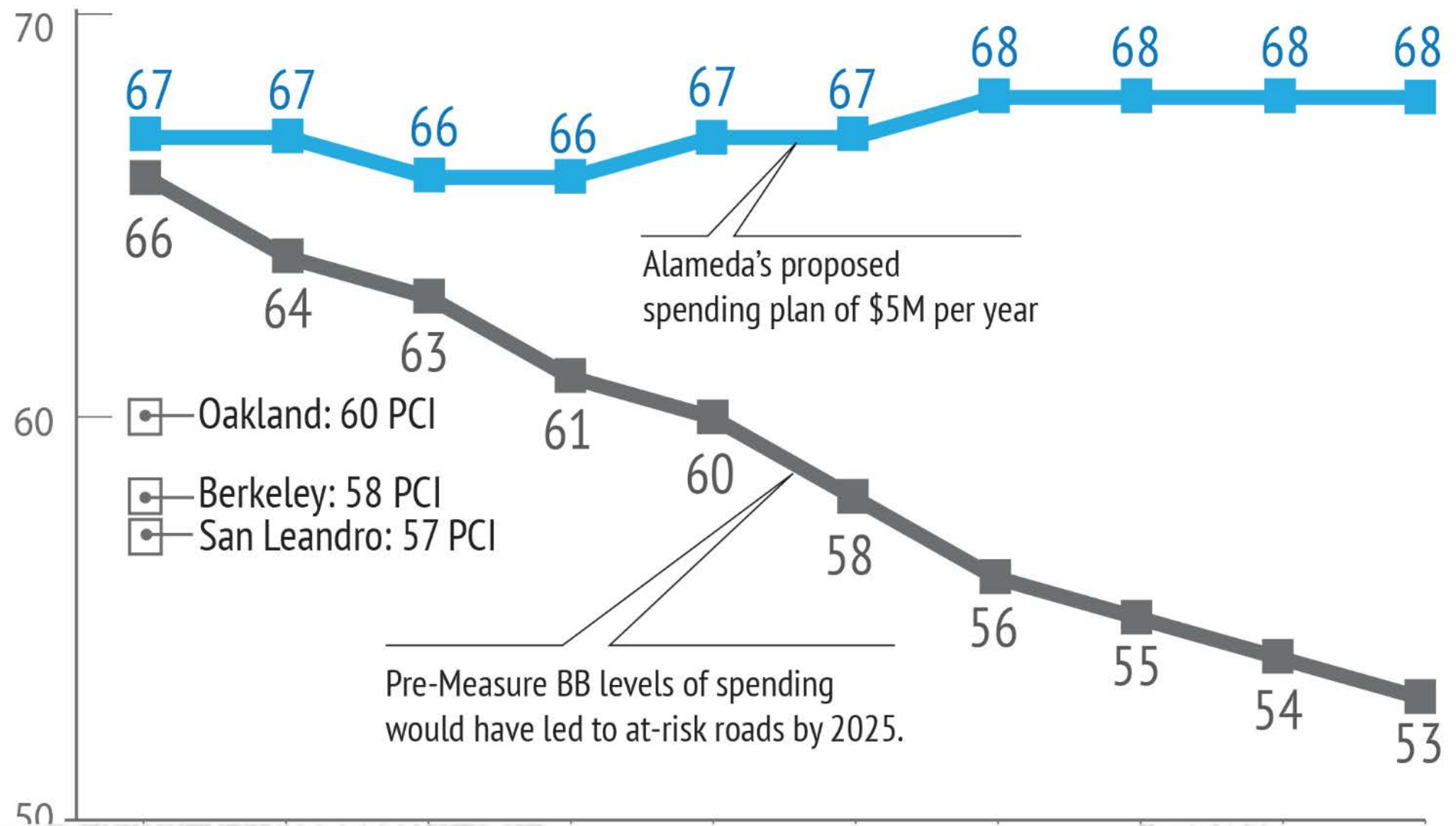
Bay Area

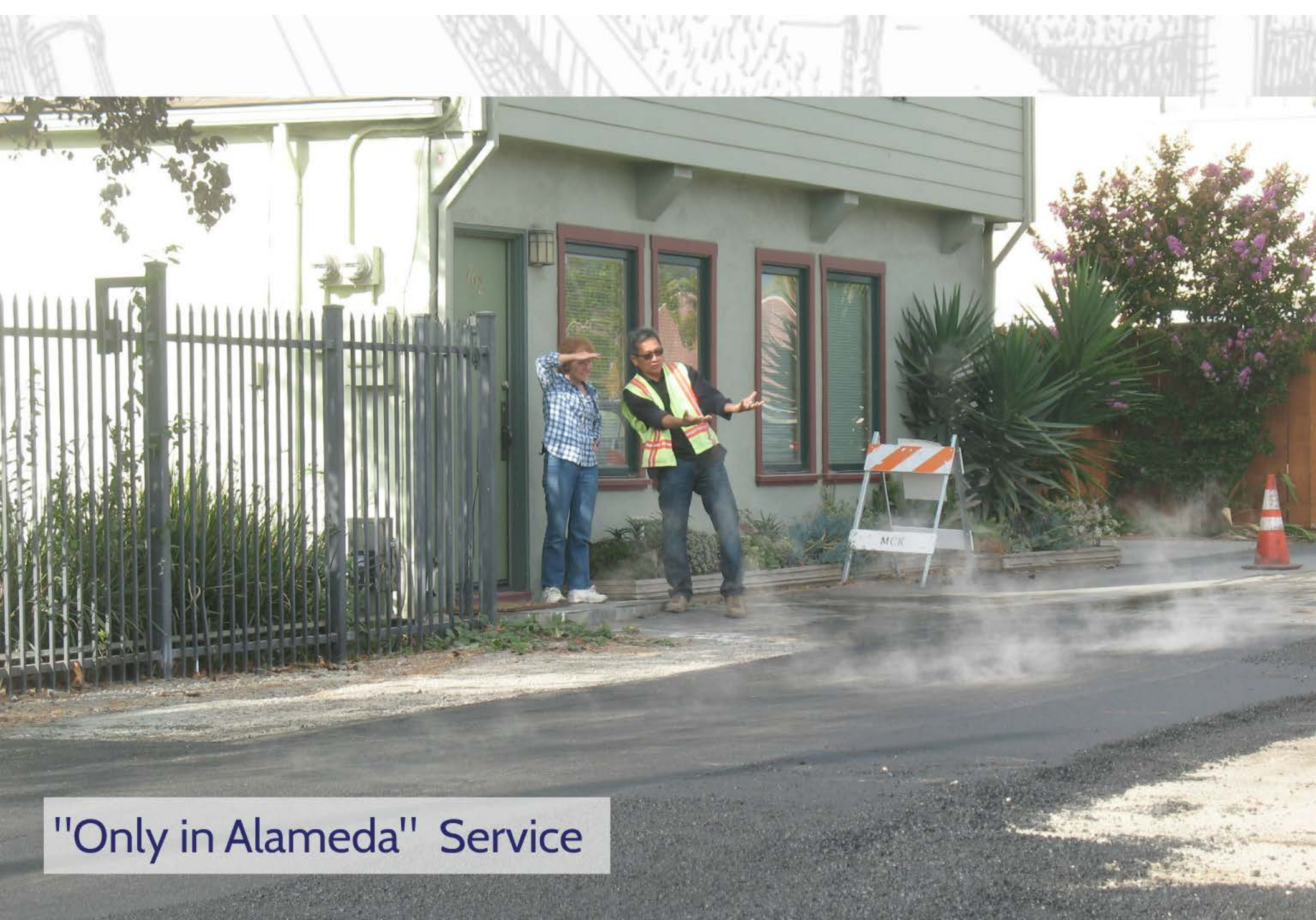
67

Alameda

Pavement Condition Index

PROJECTED 2016-2025

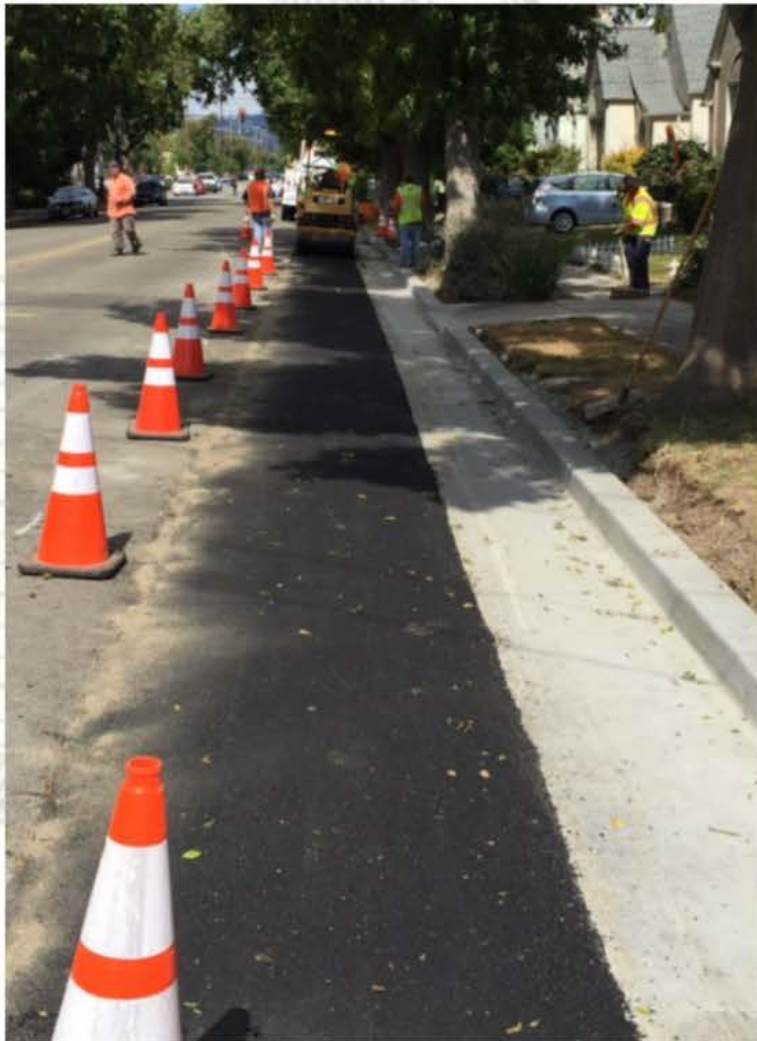




"Only in Alameda" Service

Broadway Repair

"Only in Alameda" Service



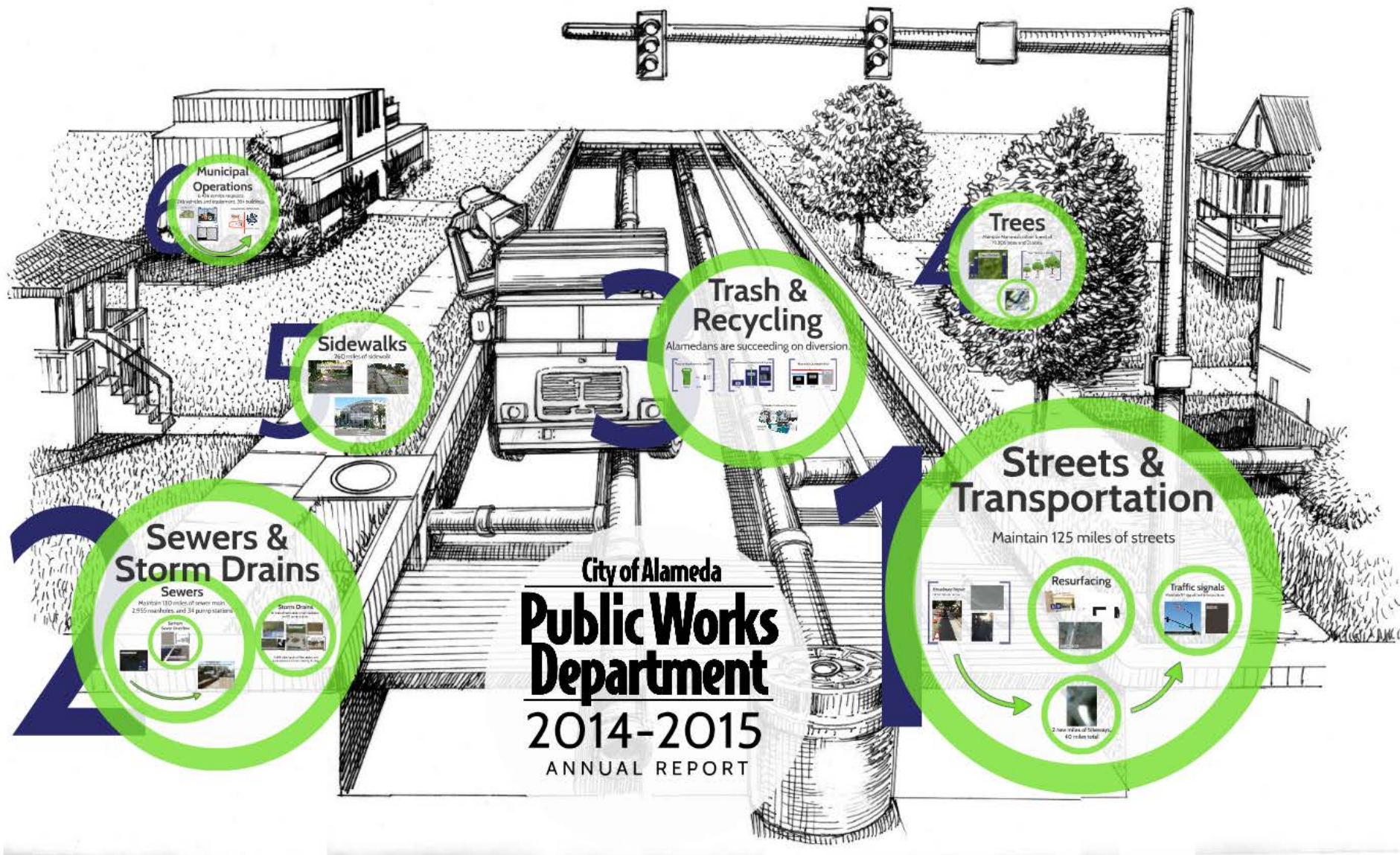


**2 new miles of bikeways,
40 miles total**

Traffic signals

Maintain 87 signalized intersections





Sewers & Storm Drains

Sewers

Maintain 130 miles of sewer main,
2,955 manholes, and 34 pump stations

Sanitary Sewer Overflow



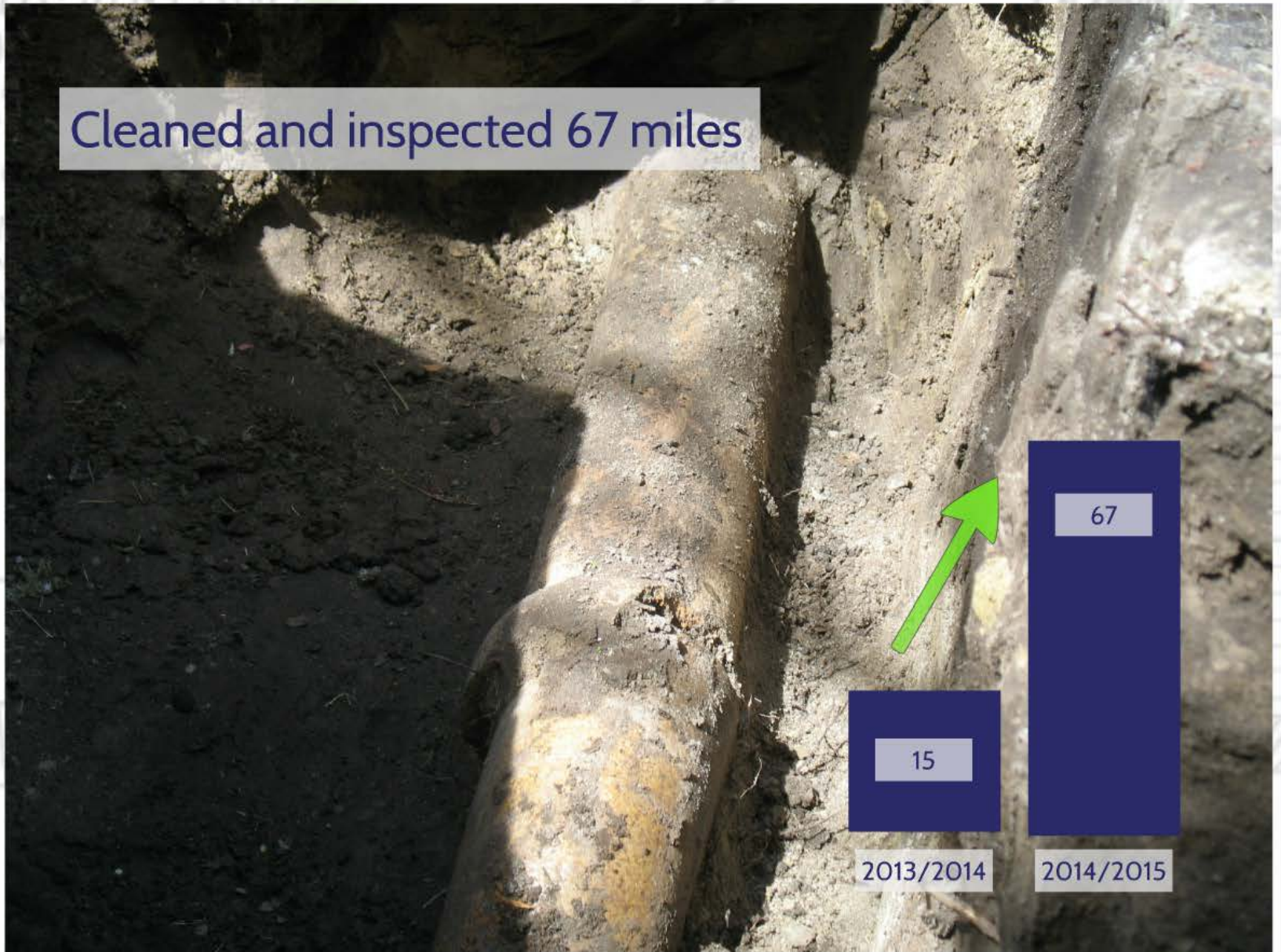
Storm Drains

81 miles of storm drain, 2,150 manholes,
and 10 pump stations



11,699 cubic yards of litter, debris, and
leaves prevented from entering the bay.

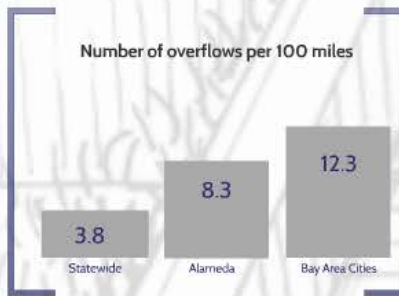
Cleaned and inspected 67 miles

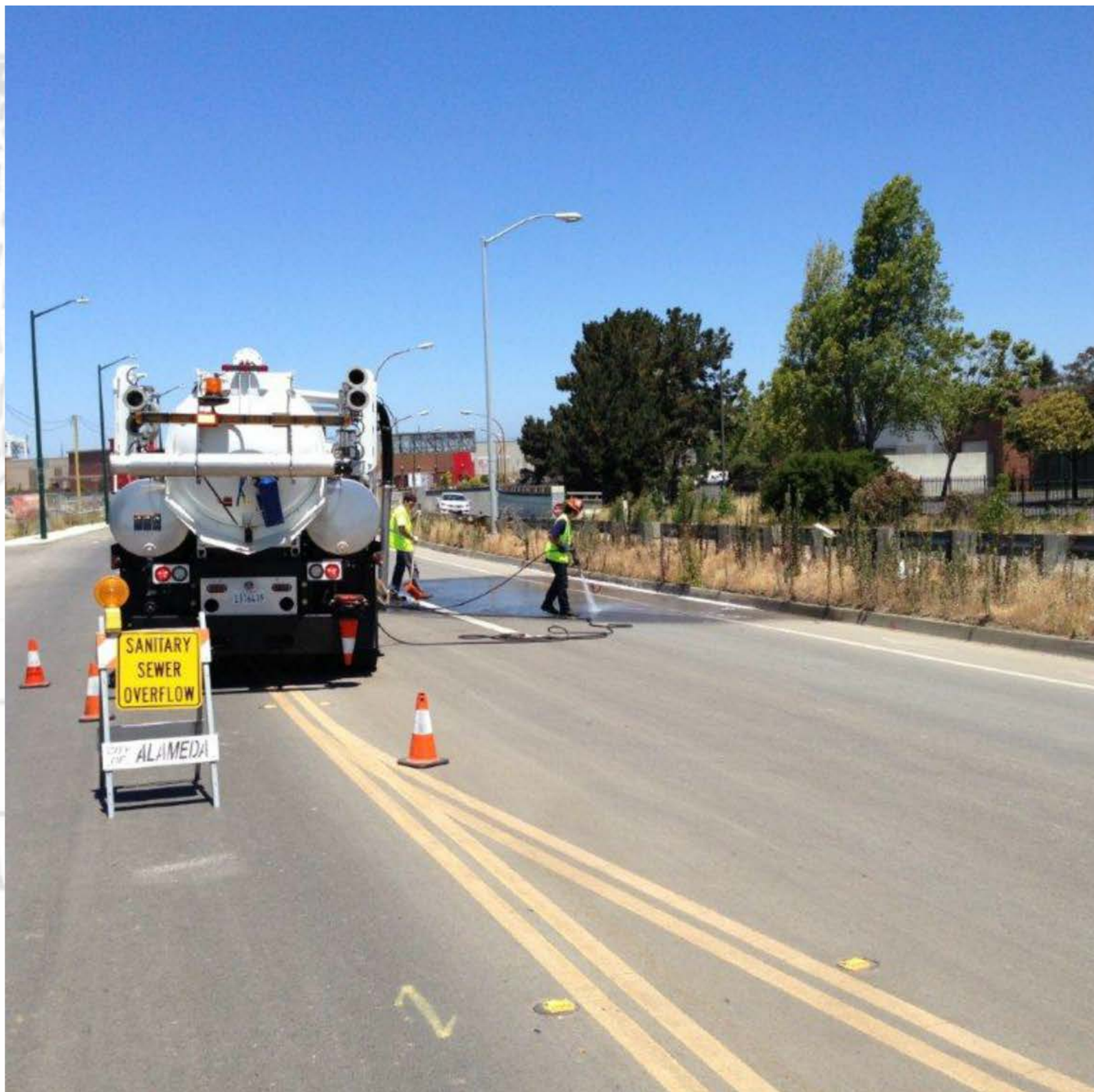


Replaced 2.8 miles of sewer main

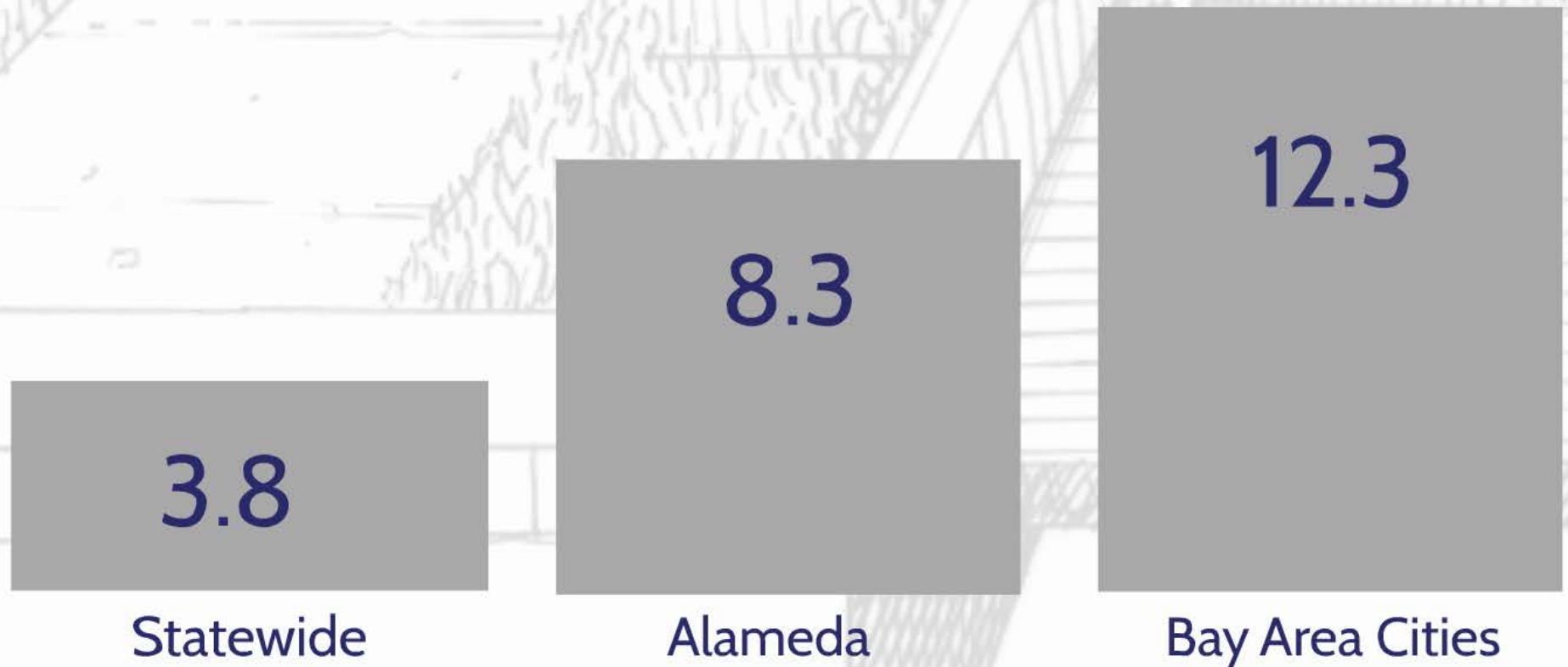


Sanitary Sewer Overflow





Number of overflows per 100 miles



Storm Drains

81 miles of storm drain, 2,150 manholes,
and 10 pump stations



11,699 cubic yards of litter, debris, and leaves prevented from entering the bay.



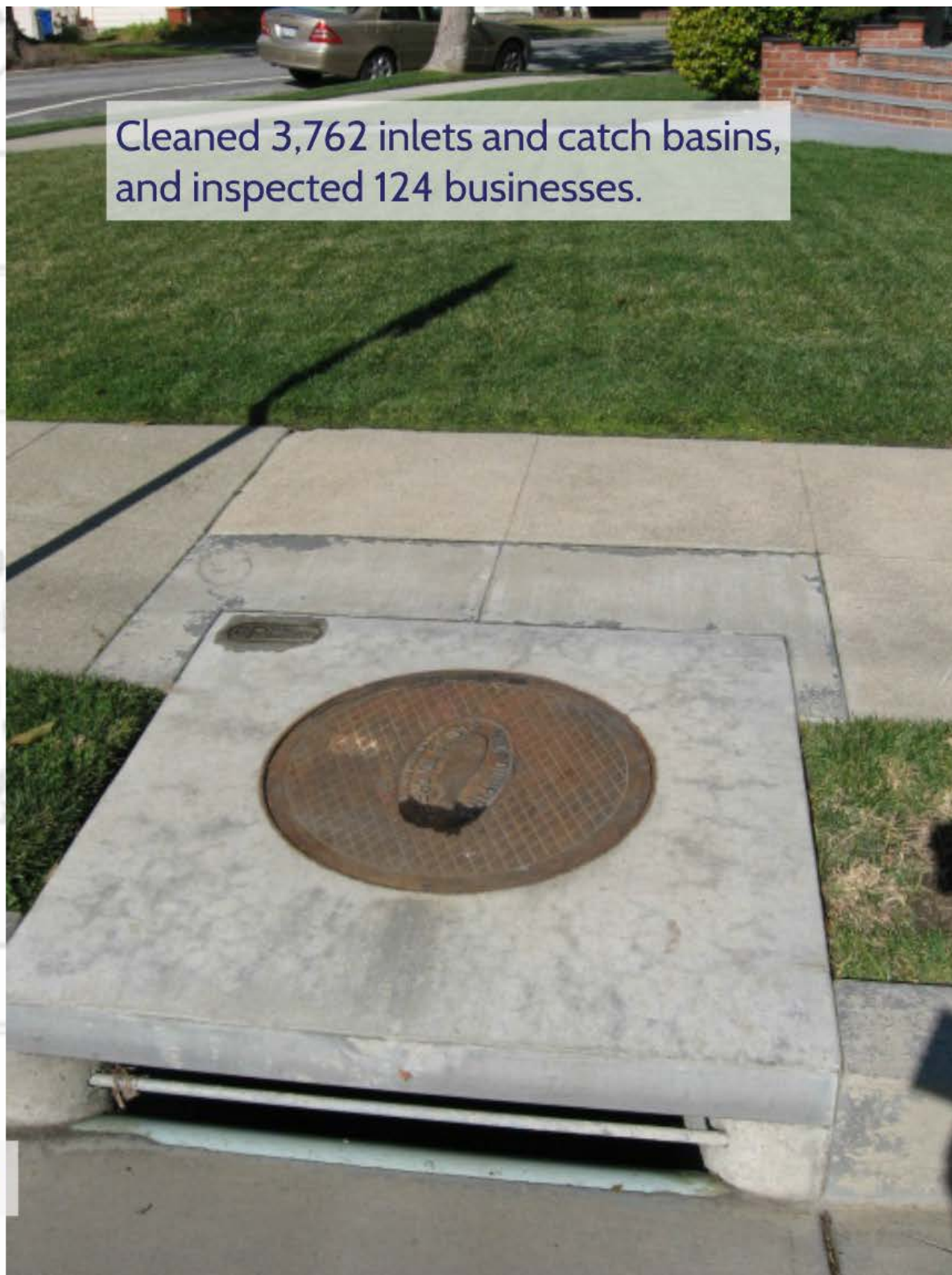
24,123 street miles
swept to remove litter,
leaves, and debris.



et miles
move litter,
d debris.



ash capture devices



Cleaned 3,762 inlets and catch basins,
and inspected 124 businesses.



55 trash capture devices
only 12 installed



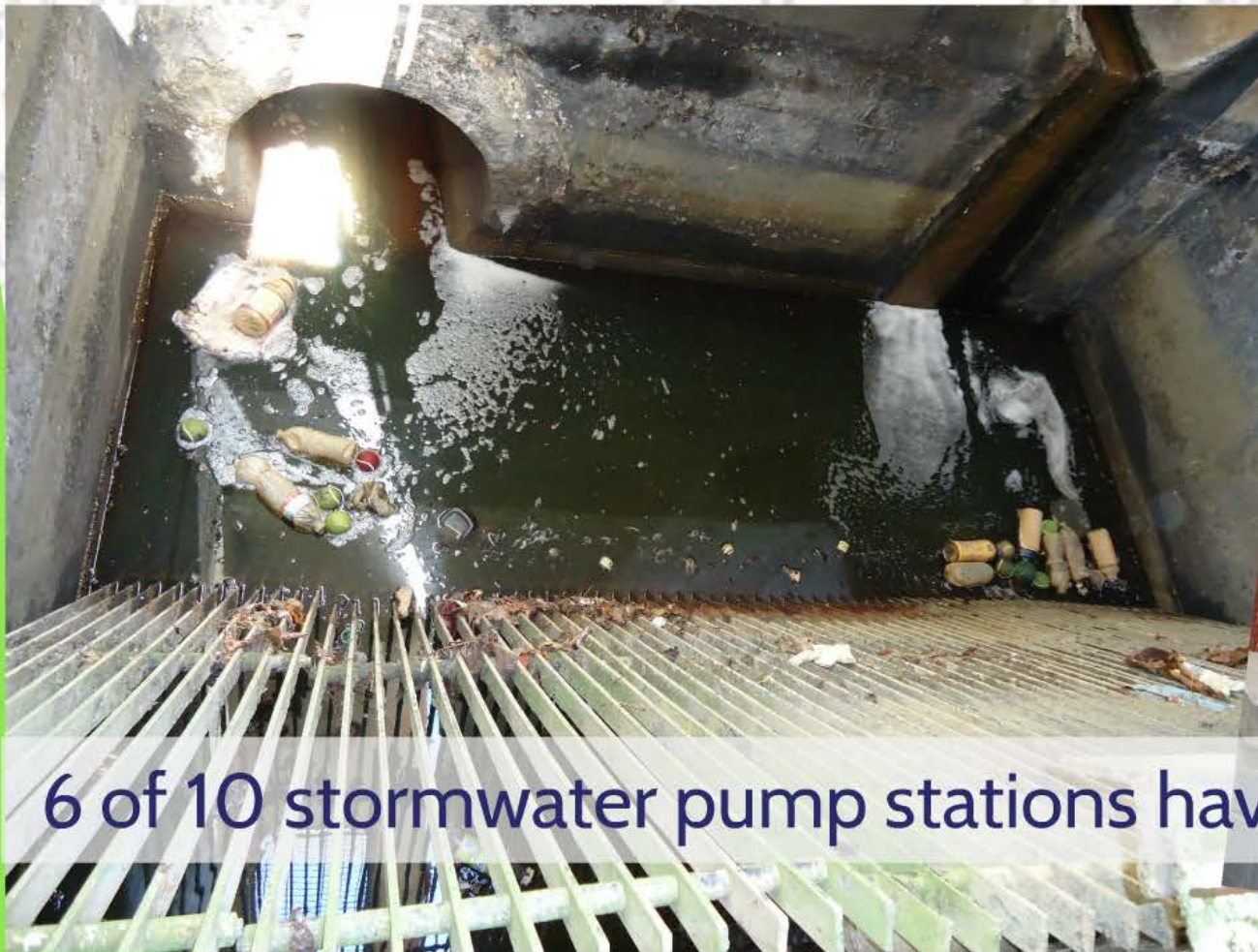
South
Dredging



55 trash capture devices installed,
only 12 installed the year prior.



leaves, and debris.



6 of 10 stormwater pump stations have trash capture devices



water pump stations have trash capture devices



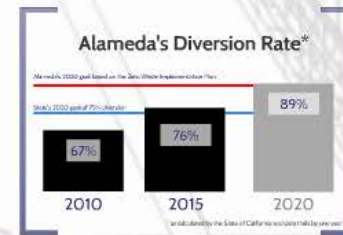
South Shore Lagoon
Dredging Completed

11,699 cubic yards of litter, debris, and leaves prevented from entering the bay.

South Shore Lagoon Dredging Completed



Alamedans are succeeding on diversion.



Tons of trash sent to landfill



2004



2015

Down
28%

Tons of Commercial Recycling and Organics

By July 1, 2014,
mandatory commercial
recycling and organics

767

2010

2,362

2014

3,064



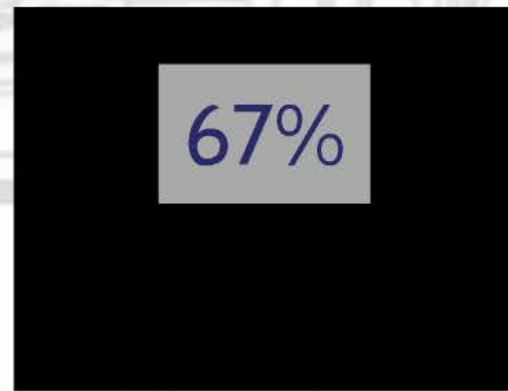
...and where some of Alameda's
composted material goes

2015

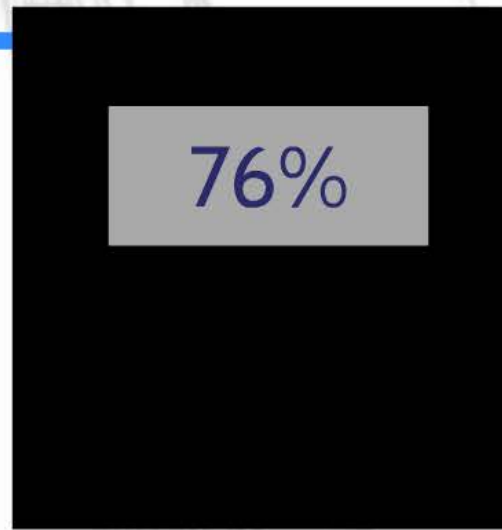
Alameda's Diversion Rate*

Alameda's 2020 goal based on the Zero Waste Implementation Plan

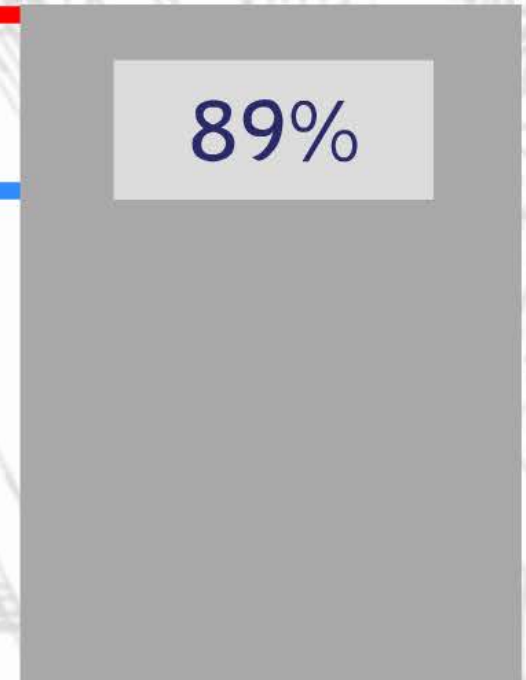
State's 2020 goal of 75% diversion



2010



2015



2020

*as calculated by the State of California and data trails by one year

Collection Trucks and Containers



All CNG
Trucks

Residential
X 3

~3,100,000
pickups

1, 2, and 3 -
yard bins

20, 32, 64,
and 96 -
gallon

Trees

Maintain Alameda's urban forest of
19,305 trees and 21 acres



"Pineapple Express" Storm



Trees Planted

216

187

149

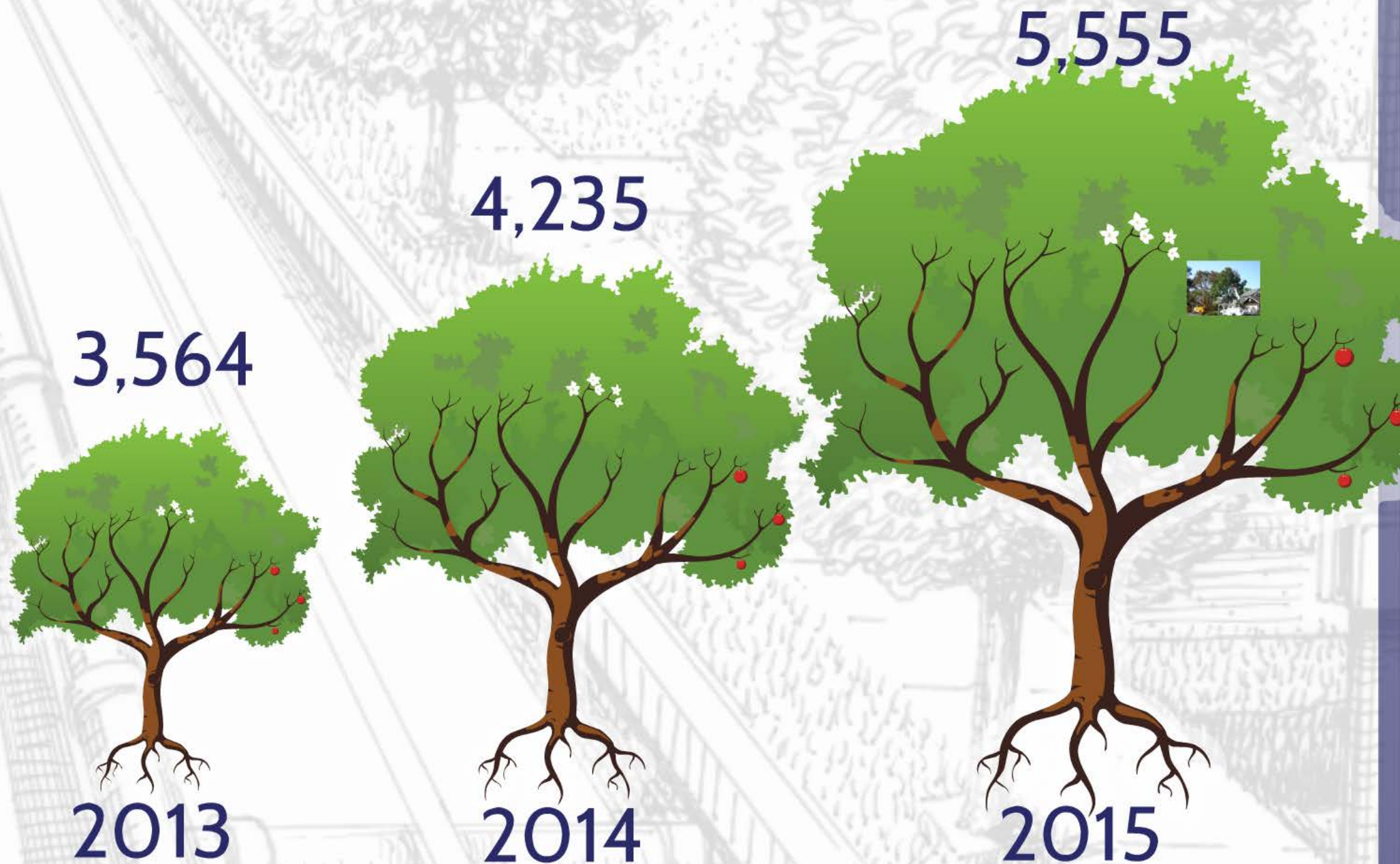
2012-
2013

2013-
2014

2014-
2015



Trees Trimmed & Pruned





"Pineapple Express" Storm



198 service requests over 3 days

Trees

Maintain Alameda's urban forest of
19,305 trees and 21 acres



"Pineapple Express" Storm



Sidewalks

260 miles of sidewalk

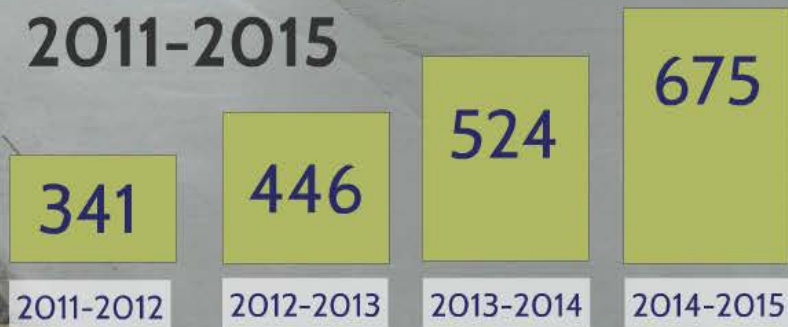


Trees vs. Sidewalks





Sidewalk Repairs 2011-2015



44 bus shelters

28 acres of medians
and bulb outs

193 litter cans



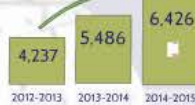
Municipal Operations

6,426 service requests

246 vehicles and equipment, 35+ buildings

6,426 Service Requests

50% increase



Building and Fleet Maintenance

35 buildings maintained, 782 service requests



Investing in our People: trainings and certifications

Positions:	Certificates:
Maintenance Workers	Platwork Finisher
Traffic Signal Tech's	Pipeline Assessment
Fleet Mechanics	Collections Operator
Inspectors	Traffic Signal Technician
Program Specialists	Signs Technician
Supervisors	Recycling Associate
Analyst/Coordinator	Fleet Manager
Directors	Stormwater Manager
	Public Works Supervision
	Capital Budgeting

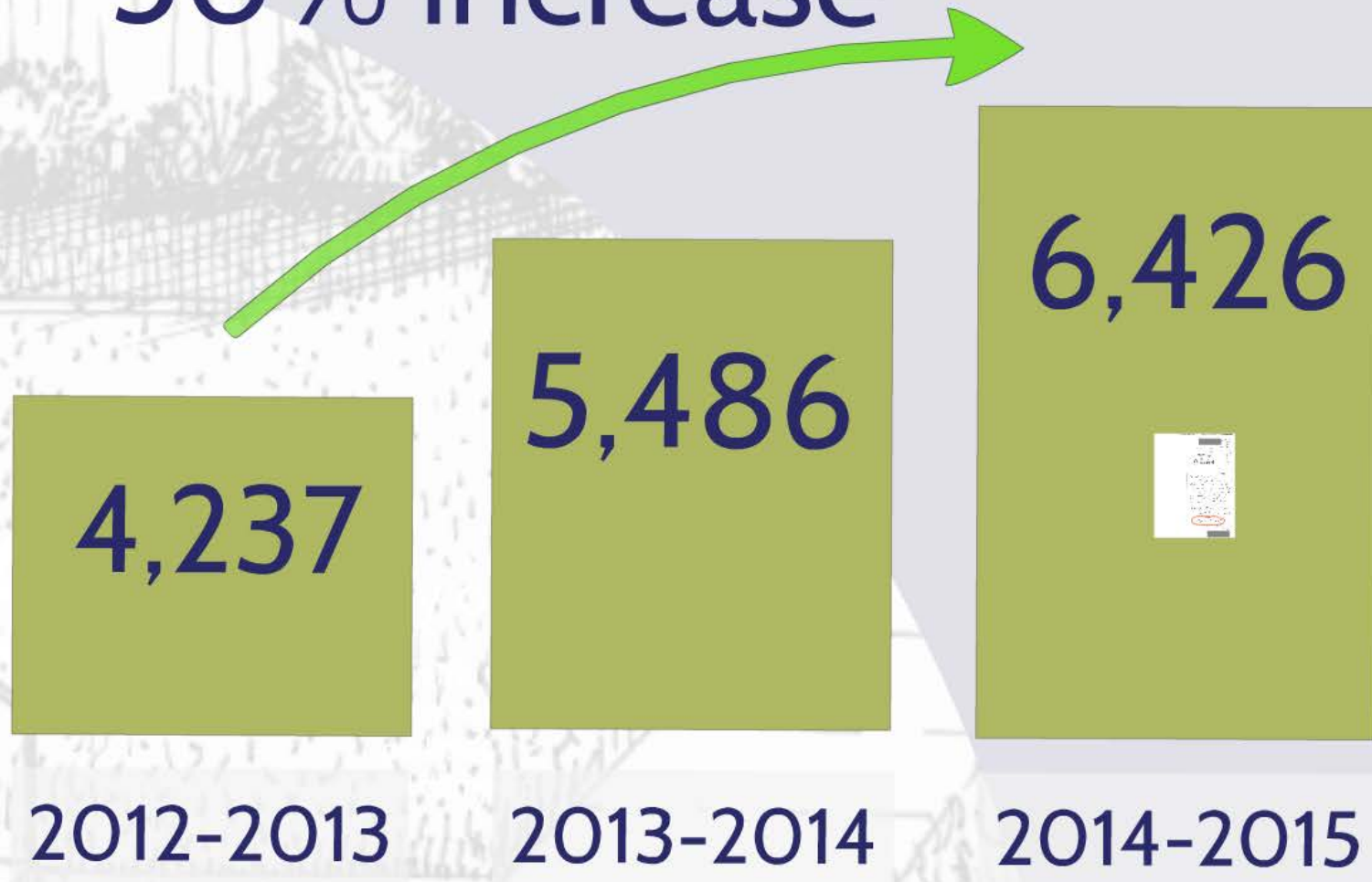
Investing in People and Public Works



3 chapters written, 25 to go

6,426 Service Requests

50% increase



RECEIVED
OCT 27 2014
PUBLIC WORKS
CITY OF ALAMEDA

Peter Stern
SOA-61-

10/23/14

Dear Public Works Department,

Thank you for saving my day!
My keys fell down the storm drain.
I thought, "maybe Public Works can help".

Indeed, a very nice woman ~~who~~
who answered the phone there said
someone would be right over.
Here came Al, within 10 minutes.

He quickly retrieved my keys.

I can't thank you enough -
I was so happy!

Only in Alameda!

Thank you, Thank you, Thank
you!

Building and Fleet Maintenance

35 buildings
maintained,
782 service
requests

366 vehicles/equipment,
1,013 service requests



GREEN CERTIFYING THE CITY OF ALAMEDA



Gaining Alameda County's green business certification for enhanced standards of environmental conservation

 **Green certified**
 **Up next**



City Hall West/Public Works
Certified 3/3/14



Recreation and Parks Dept.
Certified 3/31/15



City Hall
Certified 6/30/2015



Maintenance Services Ctr.
Certified 6/23/15



Fleet Services Center
Certified 12/14/13



Main Library
Certified 1/27/15

**Fire Department
Administration
and Station #1**

Fire Station #3
Mastick Senior Center

Fire Station #2

Fire Station #4



29% less water used,
saving
120,564,277 gallons

Investing in our People: trainings and certifications

Positions:

Maintenance Workers
Traffic Signal Tech's
Fleet Mechanics
Inspectors
Program Specialists
Supervisors
Analyst/Coordinator
Directors

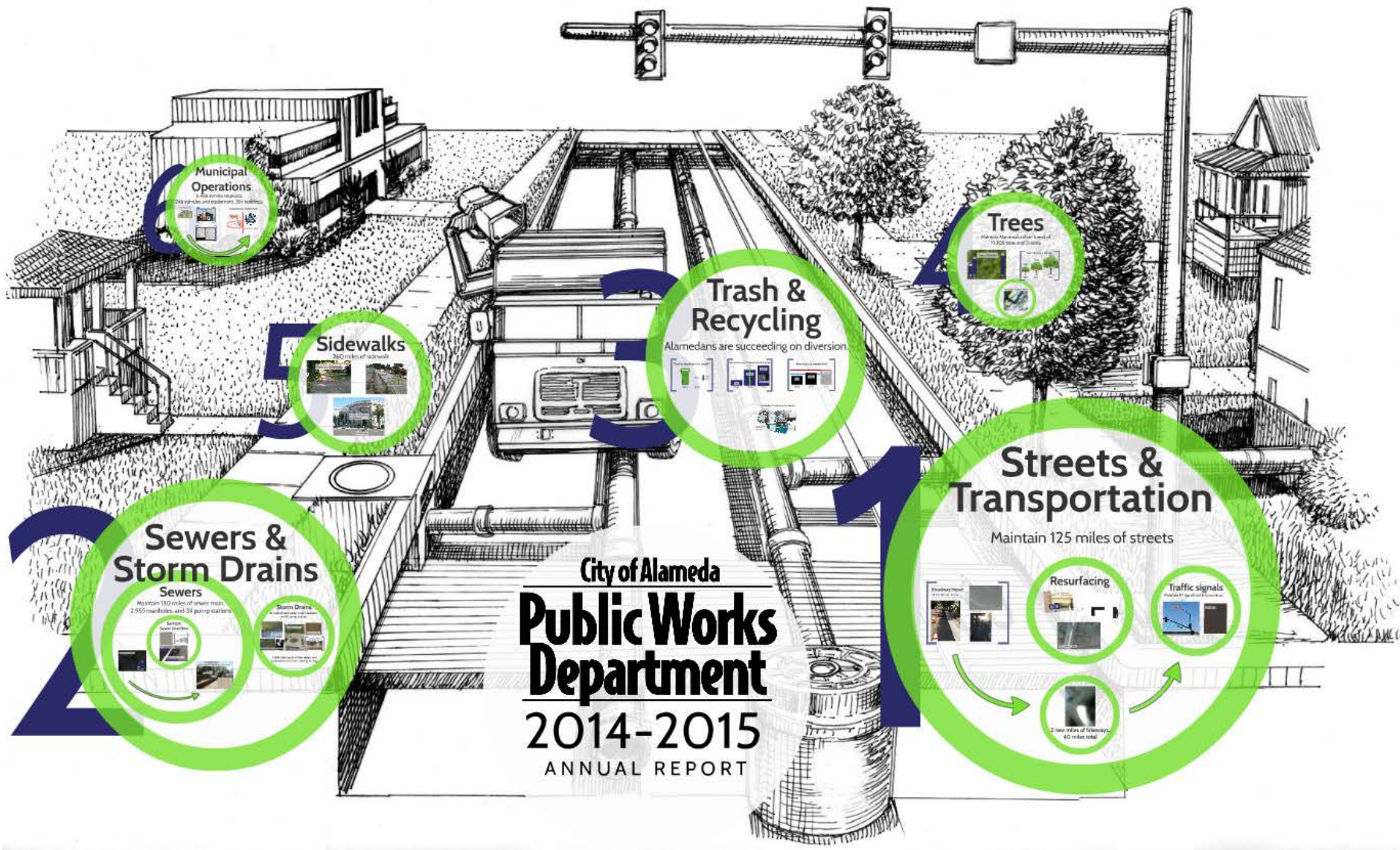
Certificates:

Flatwork Finisher
Pipeline Assessment
Collections Operator
Traffic Signal Technician
Signs Technician
Recycling Associate
Fleet Manager
Stormwater Manager
Public Works Supervision
Capital Budgeting

Investing in People and Public Works



3 chapters written, 25 to go



Municipal Operations

6 fire engines
250 vehicles and equipment
300 buildings

Sidewalks

26 miles of sidewalk

Sewers & Storm Drains

Sewers

Maintain 180 miles of sewer main
2,950 manholes and 34 pump stations

Storm Drains

10 miles of storm drain
1,000 manholes and 10 pump stations

Trash & Recycling

Alamedans are succeeding on diversion

Trees

Maintain the municipal tree fund of
10,000 trees and 10 acres

Streets & Transportation

Maintain 125 miles of streets

Resurfacing

10 miles of street
10,000 tons of material

Traffic signals

Maintain 10 traffic signals

2 new miles of sidewalk 40 miles total

City of Alameda
**Public Works
Department**
2014-2015
ANNUAL REPORT