

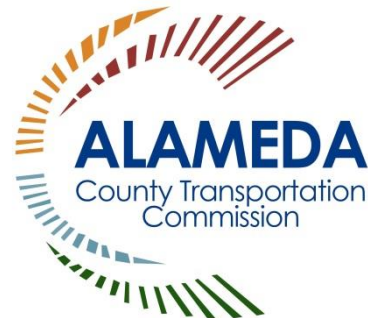


City of Alameda Paratransit Program Fiscal Year 2016/2017

Funded by Measures B and BB

Sponsors:

City of Alameda Public Works Dept
Mastick Senior Center



Agenda Overview

- Service Overview
- Program Changes
- Budget
- Planning Process Overview



Service Overview

- **Shuttle Service:**

- Acts as a bridge between AC Transit and East Bay Paratransit

- **Taxi Services:**

- Provide same day services

- **Group Trips:**

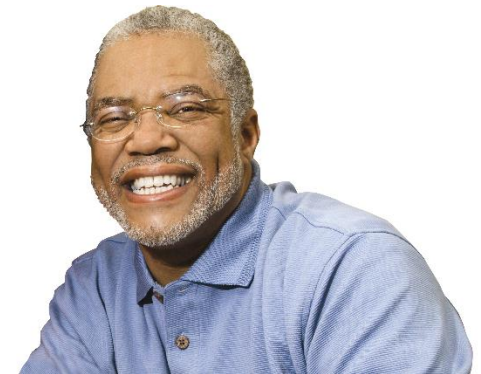
- Provide leisure activities

- **Scholarship Program:**

- Assists low-income individuals

- **Volunteer Driver Program:**

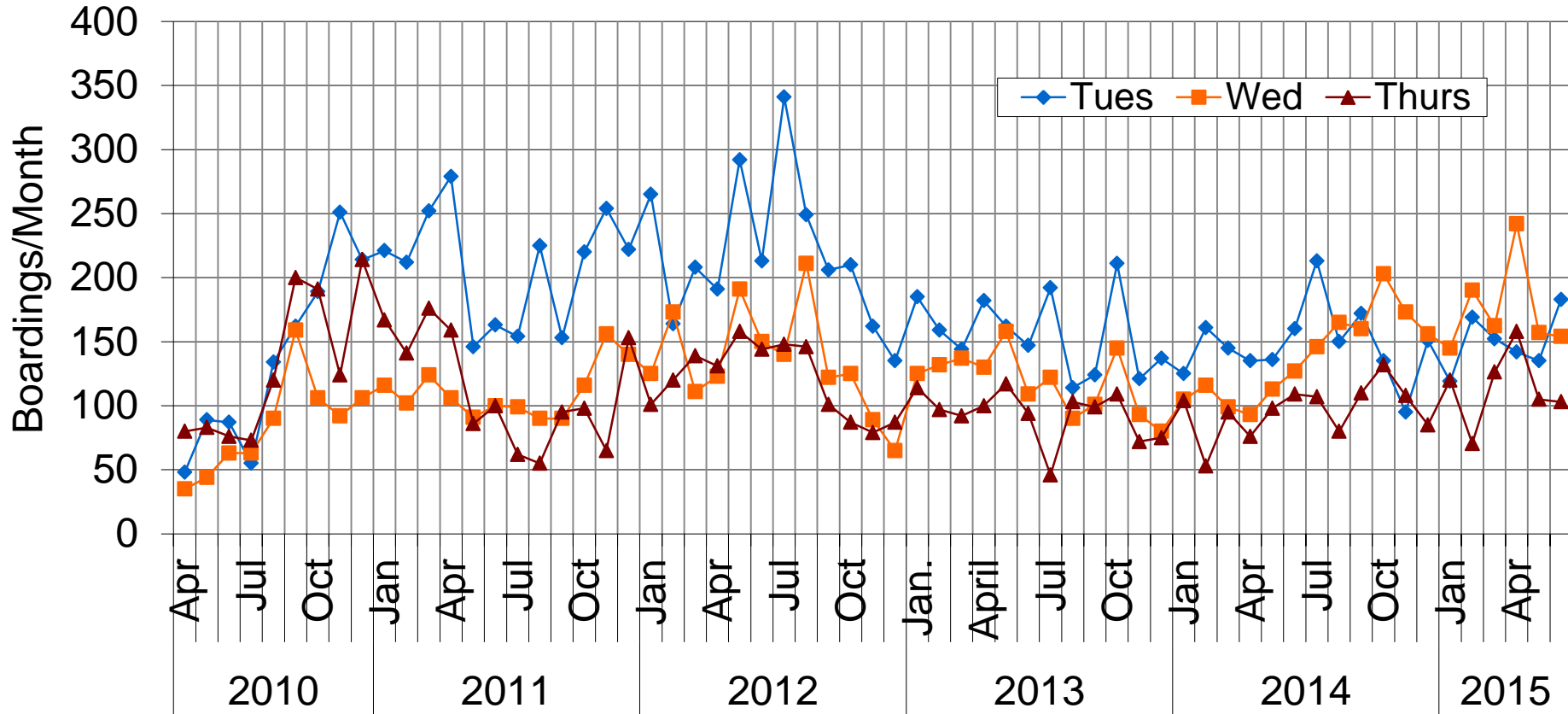
- Door-through-door service



Service Overview - Shuttle



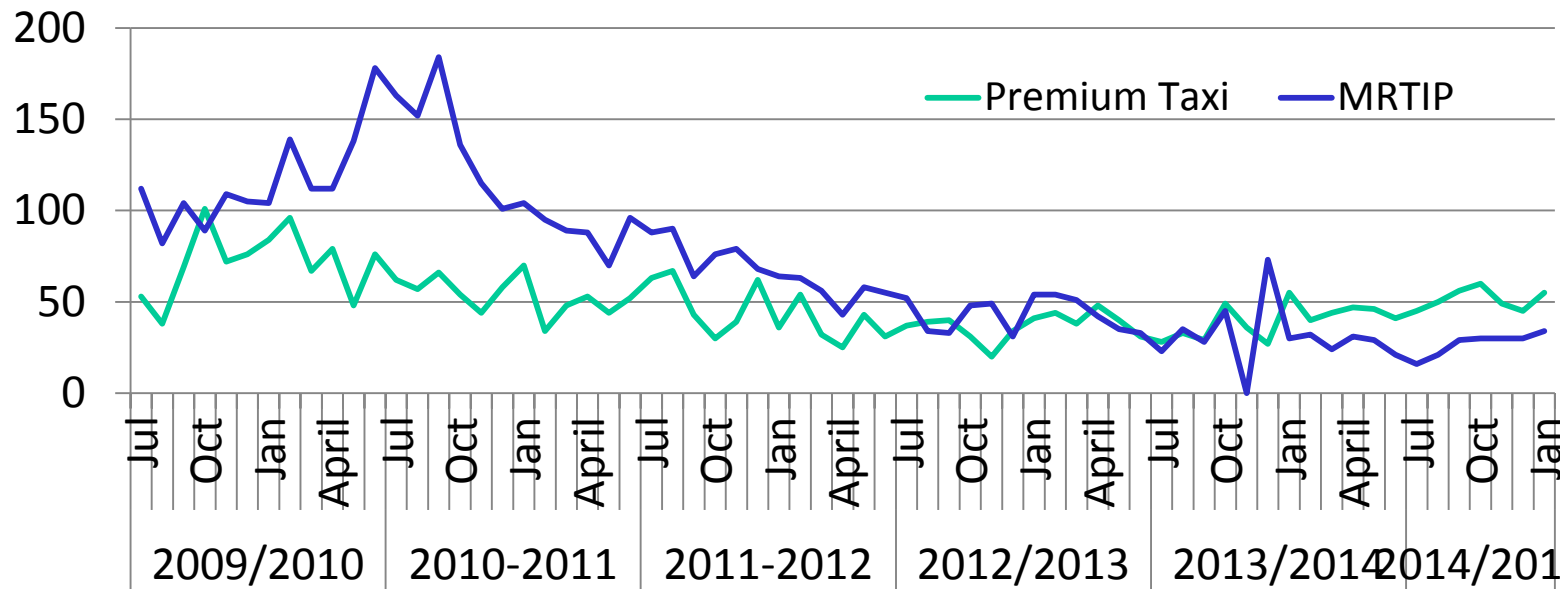
Service Overview - Shuttle



- Average 430 boardings per month,
- 25% higher than last year
- Cost per trip = \$14

Service Overview – Taxi Programs

Passengers per Month



- Average 92 taxi trips per month
- 30% higher than last year
- Cost per MRTIP trip = \$30, per Premium trip = \$10

Program Changes

- Shuttle Service
 - Serve Fruitvale BART
 - Increase Shuttle Service Frequency
 - Evaluate routes
 - Rebrand shuttle
- Taxi Services
 - Increase MRTIP taxi options



Program Changes (cont.)

- Volunteer Driver Program
 - Continue expanded program
- Group Trips
 - Continue current trips and add new ones
- Scholarship Program
 - Continue taxi subsidies and Alameda Point Collaborative program



Program Changes (cont.)

- Capital Program (new)
 - Bus benches, poles, signs at shuttle stops
 - Curb ramps, truncated domes, accessible trail improvements, accessible pedestrian push buttons, etc
- Outreach/Marketing
 - Website
 - Alameda Theatre ads
 - Print advertisements
 - New cross-street banners
 - New brochures

City of Alameda
Paratransit

*Transportation for Seniors
and People With Disabilities*

We offer the following services:



- Alameda Shuttle – free and open to the public!
- Taxi ride discounts*
- East Bay Paratransit ticket sales
- Group trips – from Mastick Senior Center to various Bay Area locations
- Scholarship program*
- Transportation assistance

*Restrictions apply

Mastick Senior Center
1155 Santa Clara Avenue
Alameda, CA 94501
Ph: (510) 747-7513
Fax: (510) 523-0247
TDD/TTY: (510) 522-5160

ALAMEDA
County Transportation
Commission

www.AlamedaParatransit.com



Budget



Revenues

Measure B/BB	\$360,000
	(+ \$217,000 balance)
East Bay Paratransit tickets	\$6,000
Taxi vouchers	\$8,000
Total revenues	\$590,000

Expenditures

Management	\$50,400
Customer Service	\$86,600
Trip Provision	\$295,000
Capital	\$100,000
Total expenditures	\$532,000
<i>(Reserves</i>	<i>\$58,000)</i>

Planning Process Overview

- Survey (December 2015/January 2016)
- Outreach to Commissions (early 2016)
 - Transportation Commission
 - Commission on Disability Issues
 - Recreation and Park Commission
 - Social Service Human Relations Board
- Submit Program Plan (March 2016)





City of Alameda Paratransit Program Fiscal Year 2016/2017

Funded by Measures B and BB

Sponsors:

City of Alameda Public Works Dept
Mastick Senior Center

