

Jim's on the Course

Patio and Event Center Plan

Overall Plan

- Enclosed patio – 75 person capacity
- Event center – 200 person capacity
 - Heating & air conditioning
 - Metal frame with glass windows
 - Restroom
 - Ability to create space for two concurrent events
- Extended outdoor patio seating with tables, fire pits, and a fountain
- Cart parking
- Memorial garden remains but is moved
- New putting green

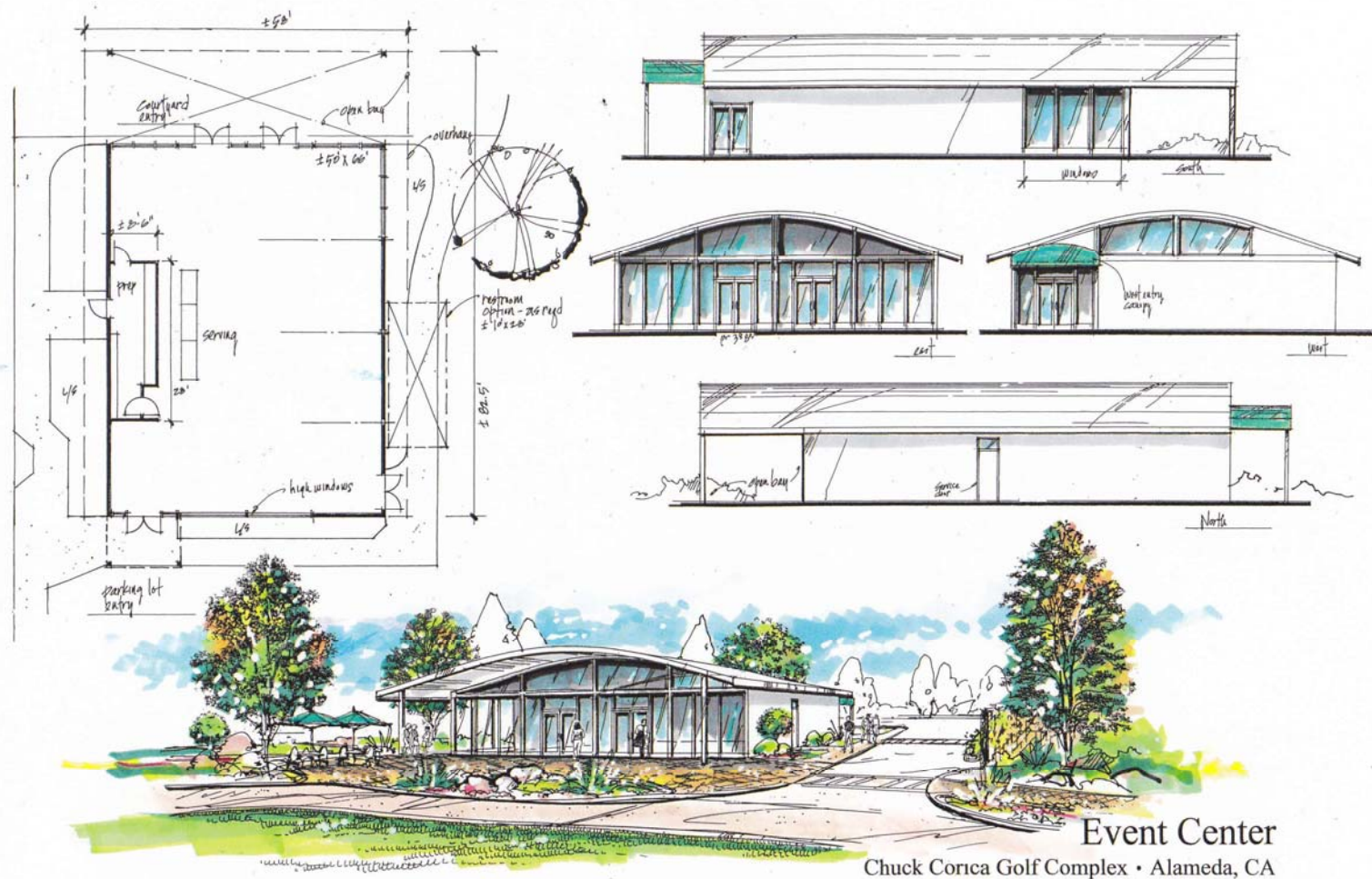
Plan Overview



Event Center Changes

- Fourth entrance for access from parking lot
- Restroom option added
- Preparation, pass through and serving area delineated
- Covered event courtyard added
- Pathways designed for flow and access.

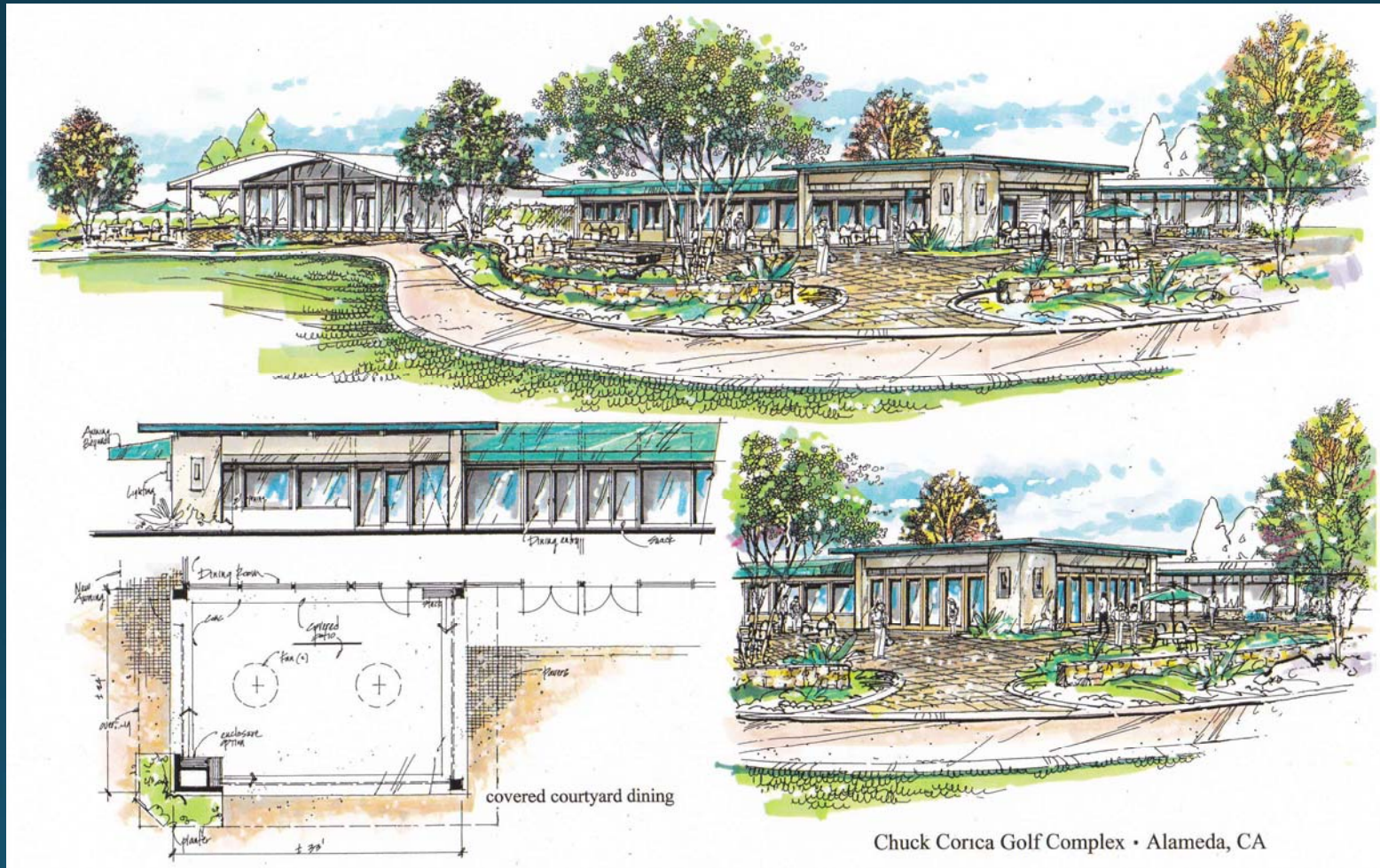
Event Center



Enclosed Patio and Outdoor Seating

- Refined enclosed patio design
 - Includes an enclosure system for glass doors to fold in so that in warm weather the patio can be opened up.
 - Added an awning over the dining entryway
- Added cart parking
- Awning covering over the bar patio

Enclosed Patio and Outdoor Seating



Partnership & Responsibilities

- Jim's on the Course
 - Event Center construction
 - Enclosed patio
 - Fire pits and all amenities in outdoor patio
- Greenway Golf
 - Event Center base
 - ADA pathway to connect to restrooms
 - Outdoor patio paving, low wall, sidewalk, moving the memorial, plumbing, drainage, demolition, grading and installing the fountain.

Next Steps

- 1) Planning Board approval – July 2016
- 2) Revised Concessionaire Agreement and Plan to City Council for approval – Sept 2016
- 3) Construction – Winter/Spring 2017