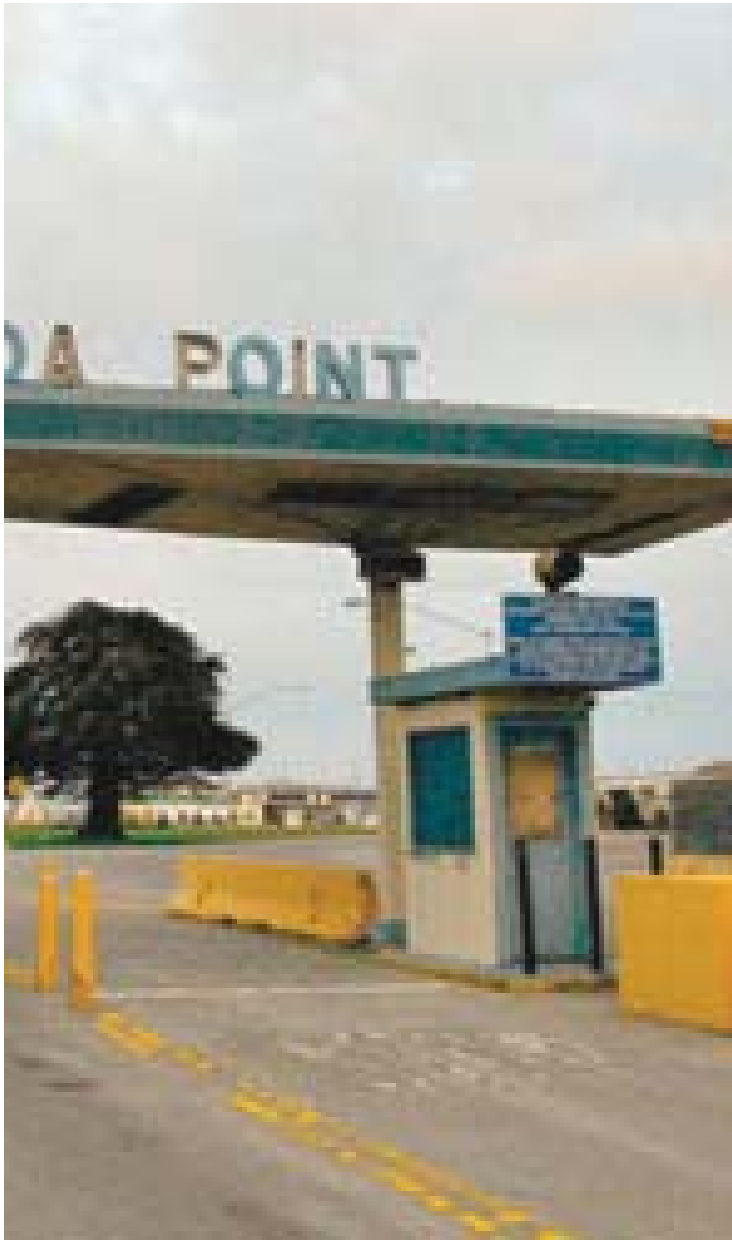


ALAMEDA FERRY TERMINAL SCHEMATIC DESIGN EXHIBITS

07.13.16





INSIGNIA OF THE U. S. NAVY

AND RELATED SERVICES

OFFICER'S CREST
 NAVY NURSE CORPS
 MARINE CORPS EMBLEM
 NAVY FOULED ANCHOR
 COAST GUARD EMBLEM
 WAVES
 NAVY DEPARTMENT SEAL

OFFICERS

AND MIDSHIPMEN, WARRANTS AND CADETS¹

SHOULDER BOARDS ²	SLEEVE STRIPES ³	PIN-ON DEVICES
ADMIRAL		
VICE ADMIRAL		
REAR ADMIRAL		
COMMODORE		
CAPTAIN		
COMMANDER		
LT. COMMANDER		
LIEUTENANT		
LIEUTENANT (JG)		
ENSIGN		
CHIEF WARRANT		
MIDSHIPMAN ⁴		
WARRANT		
AVIATION CADET		

ENLISTED

SPECIALTY MARKS⁵

SEAMAN BRANCH				
SIGNALMAN FIRE CONTROLMAN				
ARTIFICER BRANCH				
TELEGRAPHER				
ARTIFICER BRANCH—ENGINE ROOM FORCE				
AVIATION BRANCH				
SPECIAL BRANCH				

CORPS DEVICES^{1,4}

LINE	MEDICAL	HOSPITAL	SUPPLY	CHAPLAIN	CHAPLAIN (Jewish)	CIVIL ENGINEER	DENTAL

COAST GUARD AND OTHER SERVICES WEARING NAVAL UNIFORM

OFFICER'S CREST	CORPS DEVICE	ENLISTED MAN	ENLISTED MAN	CORPS DEVICE	ENLISTED MAN	CORPS DEVICE	ENLISTED MAN

CAPS OF OFFICERS, MIDSHIPMEN, WARRANTS AND CADETS

FLAG	JUNIOR OFFICER AND CHIEF WARRANTS	WAVE OFFICERS	MIDSHIPMEN	WARRANTS	AVIATION CADET

SPECIAL BREAST INSIGNIA

NAVAL AVIATION	NAVAL OBSERVER	FLIGHT SURGEON	SUBMARINE	AIR CREW	SUBMARINE COMBAT

WARRANT SPECIALTIES¹

BOATSWAIN	GUNNER	TORPEDOMAN	ELECTRICIAN	RADIO ELECTRICIAN	MACHINIST	CARPENTER	SHIP'S CLERK	AEROGRAPHER	PHOTOGRAPHER	PHARMACIST	PAY CLERK

ENLISTED DISTINGUISHING MARKS

AIRSHIP SERVICE	AVIATION UTILITY	SUBMARINE SERVICE	GUN CAPTAIN	BOMBSIGHT MECHANIC	EXCELLENCY IN COMMUNICATIONS	EX-APPRENTICE	GUN POINTER FIRST CLASS	GUN DIRECTOR POINTER, FIRST CLASS	PARACHUTE MAN	AIR GUNNER	EXPERT RIFLEMAN	EXPERT PISTOL SHOT	GUN POINTER SECOND CLASS	GUN DIRECTOR POINTER SECOND CLASS	SHARPSHOOTER	RIFLE	CONSTRUCTION BATTALION	SEAMAN GUNNER

SERVICE STRIPES FOR ENLISTED MEN

AFTER 12 YEARS	ONE FOR EACH 4 YEARS SERVICE WITH GOOD CONDUCT	C. P. O.	STEWARDS	OTHER ENLISTED MEN

ENLISTED CAPS

NAVAL MINE WARFARE	MASTER DIVER FIRST CLASS	DIVER, SECOND CLASS	SALVAGE DIVER	GUN RANGE FINDER OPERATOR	EXCELLENCY IN GUNNERY	EXCELLENCY IN ENGINEERING

SHORE PATROL

SP

WATCH MARKS

SEAMAN BRANCH	FIREMAN BRANCH

ENLISTED RATING BADGES¹

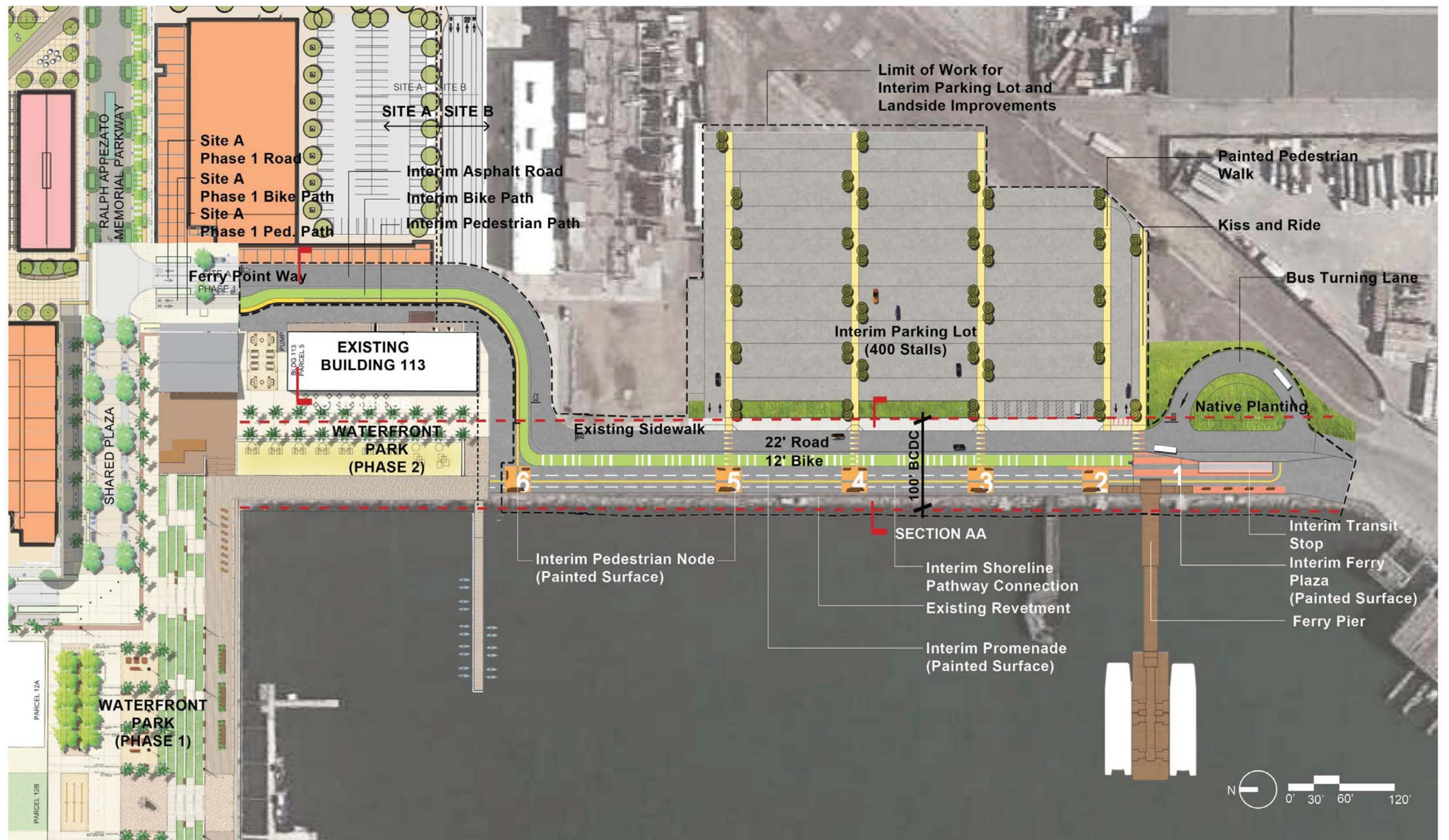
CHIEF PETTY OFFICER	FIRST CLASS P. O.	SECOND CLASS P. O.	THIRD CLASS P. O.

Above badges gold after 12 years continuous service with good conduct.

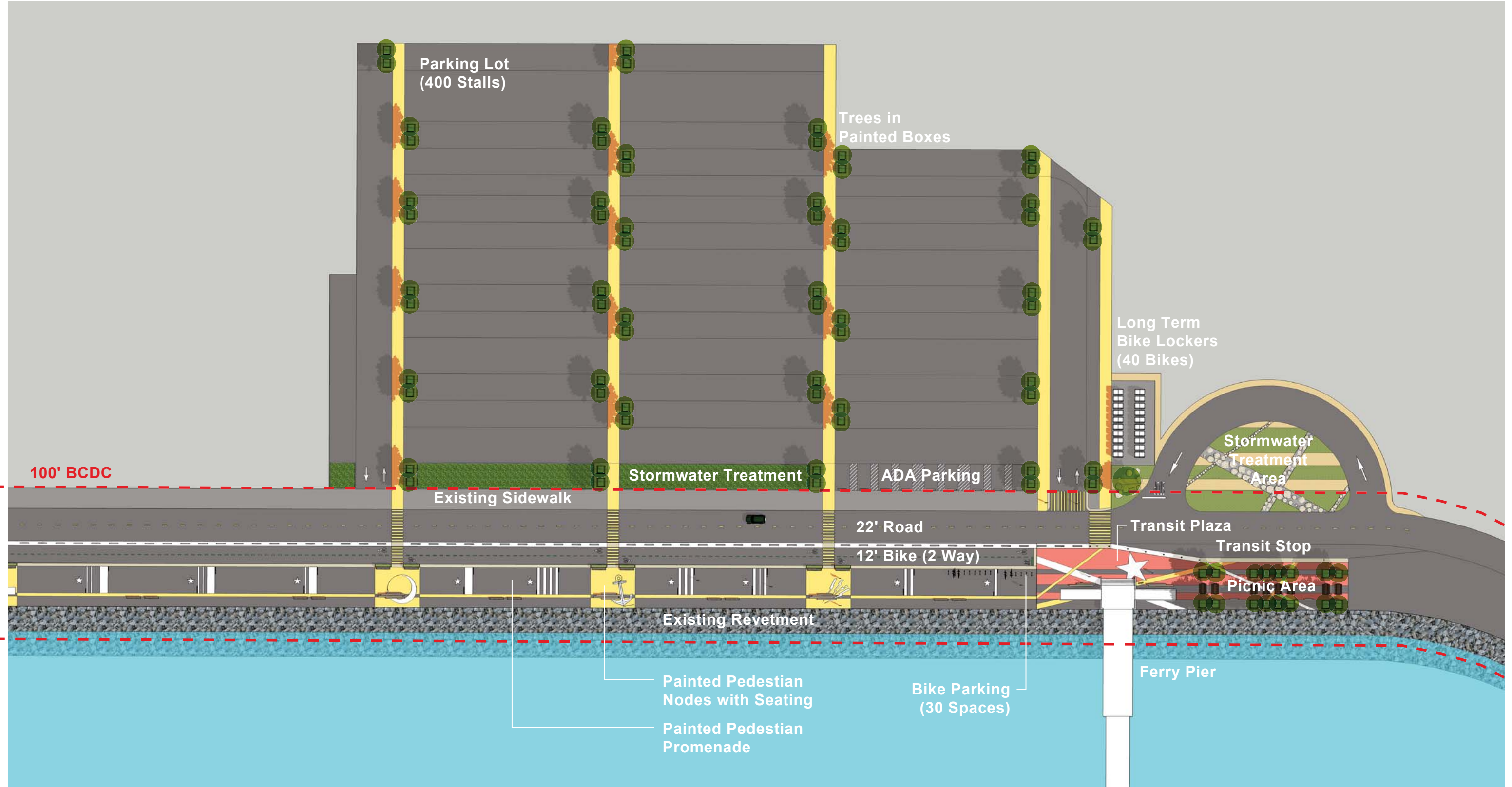
ENLISTED CUFF STRIPES¹

SEAMAN FIRST CLASS	FIREMAN FIRST CLASS	FIREMAN SECOND	SEAMAN SECOND	FIREMAN THIRD	APPRENTICE SEAMAN

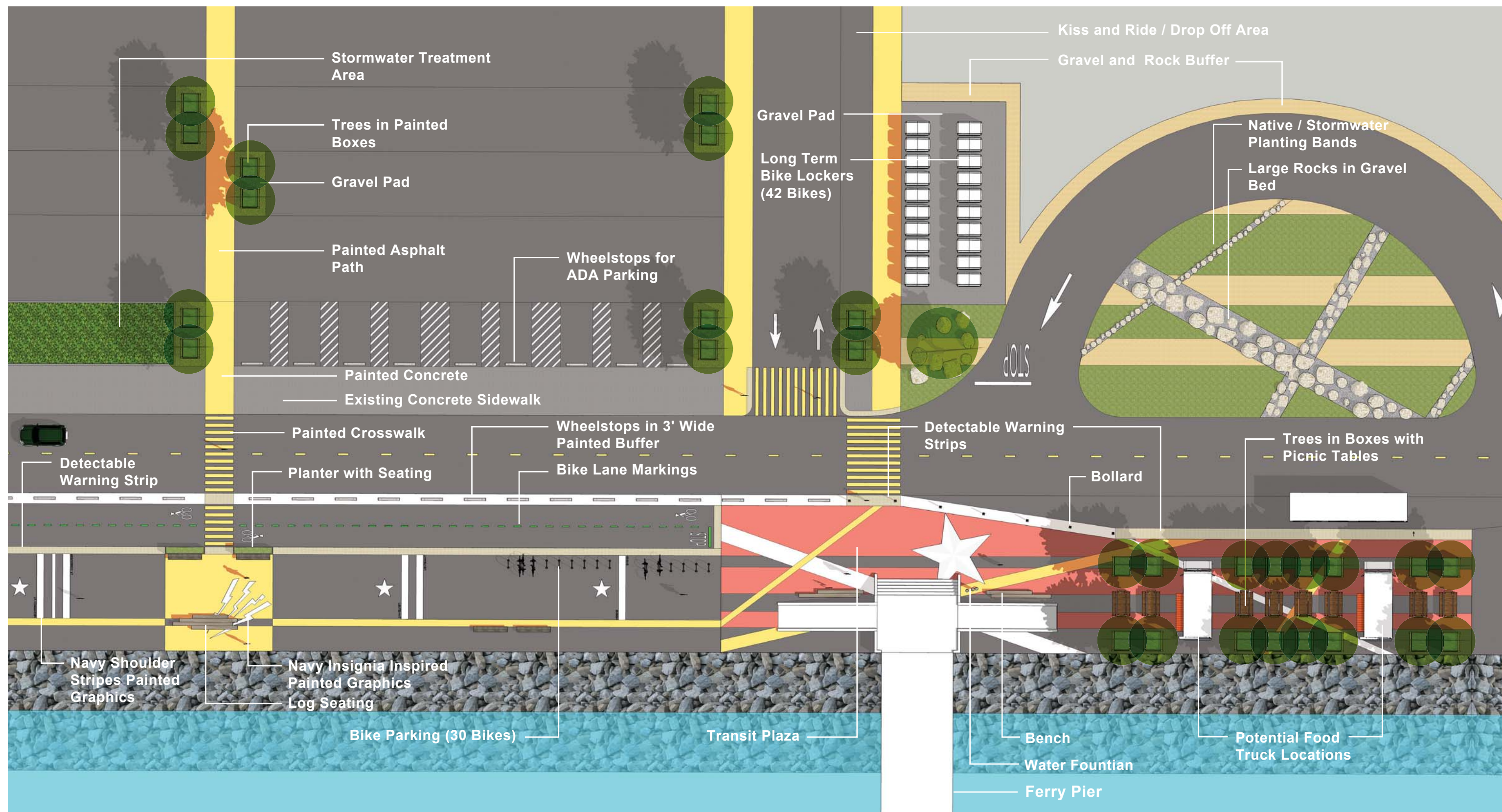
1. Shown in order of precedence. 2. Stars (except on Flag Officers' shoulder boards) indicate Line officers. Substitute corps insignia for stars on others. 3. Showing, left to right, First, Second, Third and Fourth Classes. 4. Also pin-on devices (except Line). 5. This plate shows only insignia worn on Naval Uniforms. Marine Corps insignia follows Army insignia in general. 6. Bar indicates awards for successive years.



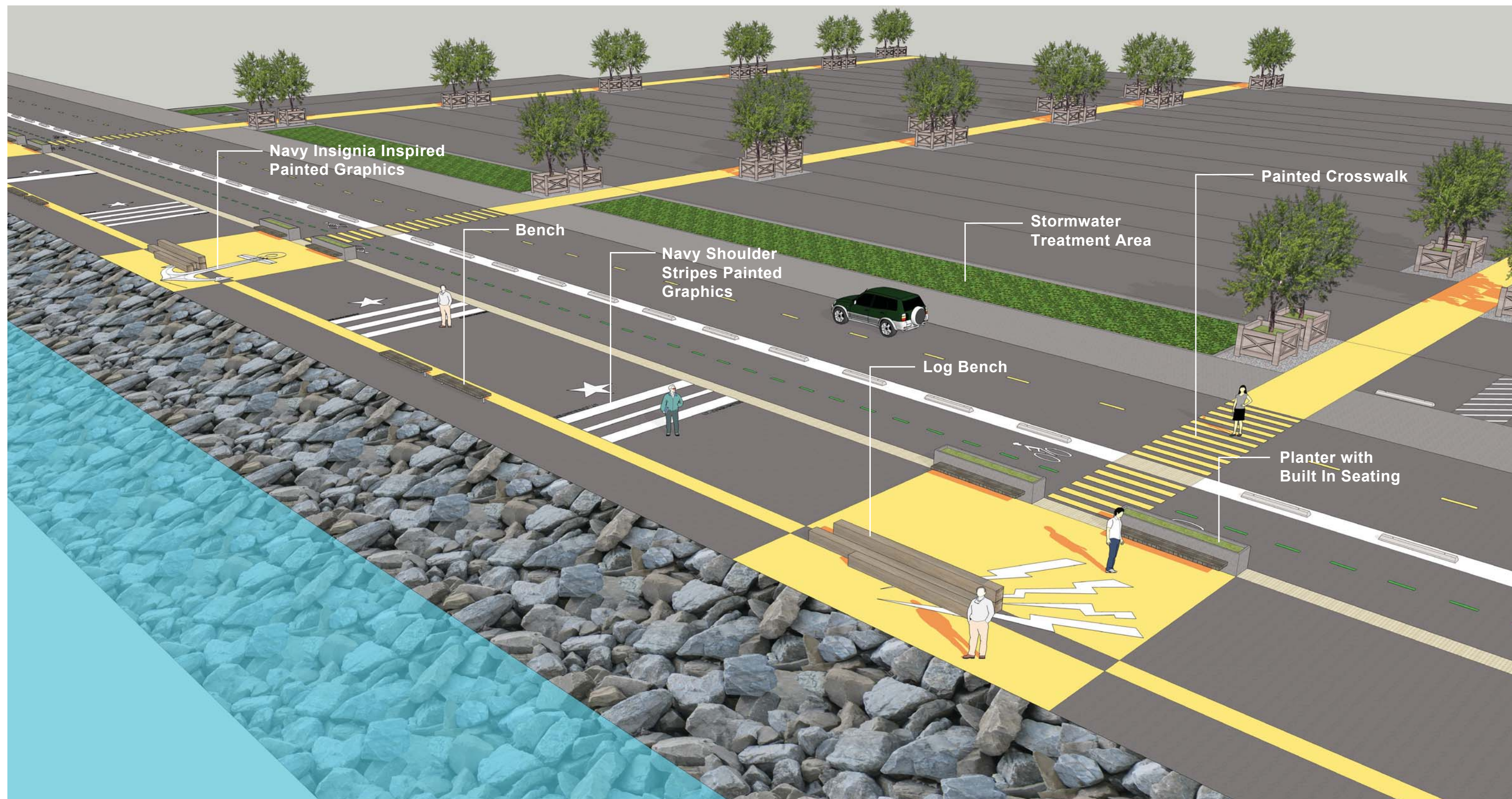
BCDC REVIEWED SITE PLAN



REVISED SITE PLAN



PLAZA ENLARGEMENT PLAN



PROMENADE + PARKING DESIGN PERSPECTIVE

ALAMEDA FERRY TERMINAL SCHEMATIC DESIGN EXHIBITS

07.13.16





PLAZA + PROMENADE DESIGN PERSPECTIVE



PROMENADE + PLAZA DESIGN PERSPECTIVE (NO FOOD TRUCKS)



PROMENADE + PLAZA DESIGN PERSPECTIVE (FOOD TRUCKS)



Streetlife Rough and Ready 10 Bench



Log Bench



Trees in Large Boxes



Elkay Bi Level Water Fountain



Streetlife X Table Picnic Set



Dero Newport Bollard



Gray-Blue Pea Gravel



White Surface Applied Detectable Warning Tile



Dero Hoop Bike Rack



Bike Link Storage Locker



Painted Asphalt



Rocks, Gravel and Grasses

Tree Options:



Option 1: Arbutus unedo



Option 2: Pinus contorta



Option 3: Ilex cassine

Ground / Meadow Options:



Muhlenbergia rigens



CA Native Coastal Meadow Flowers



Festuca californica

Container Options:



Erigeron glauca 'Albus'



Penstemon 'Margarita BOP'



Eriogonum fasciculatum foliolosum

Stormwater Options:



Solidago confinis



Arrhenatherum elatius



Iris longipetala