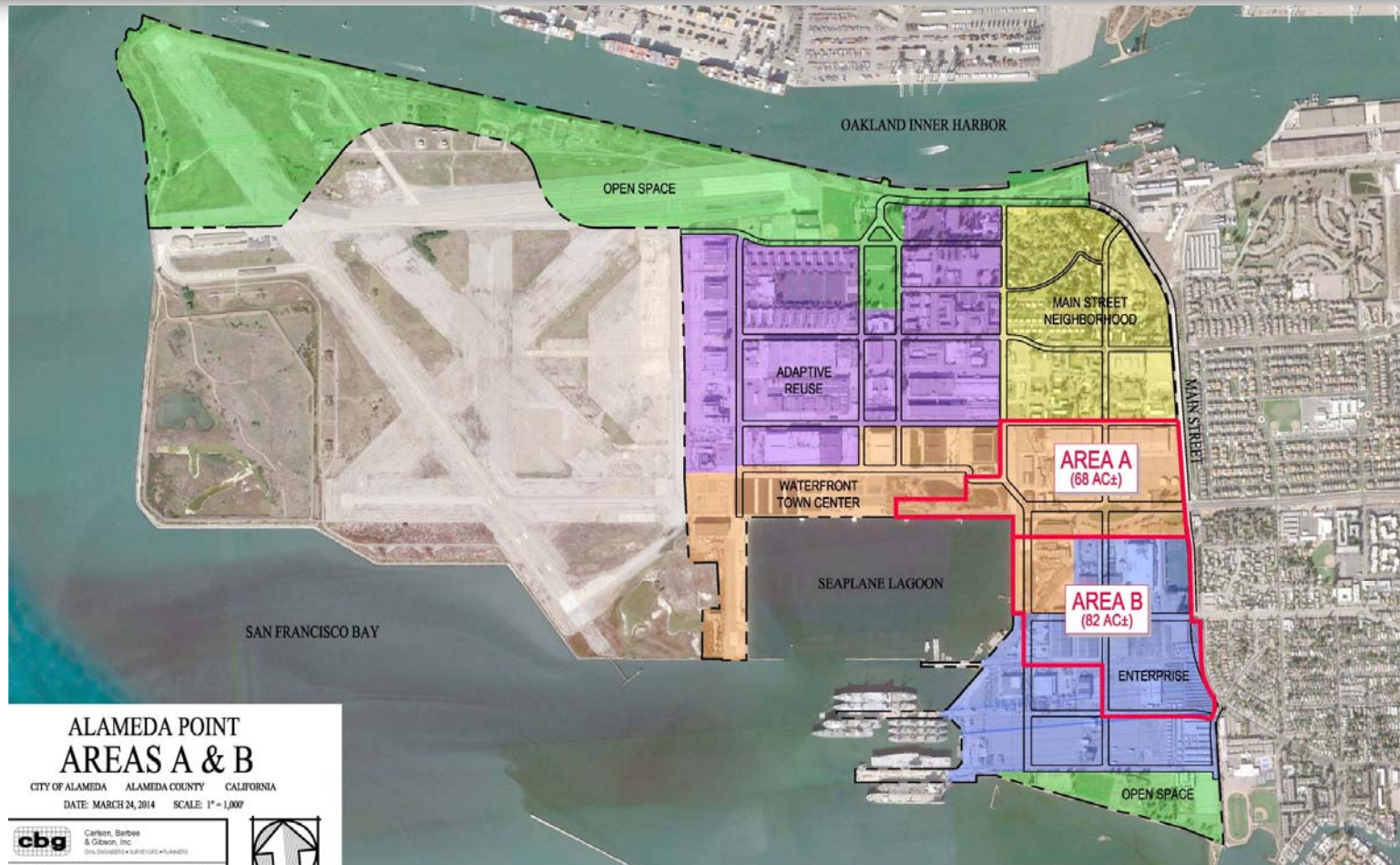


Site A at Alameda Point: Neighborhood Park

Recreation and Park Commission
September 8, 2016



First New Development Parcel: Site A

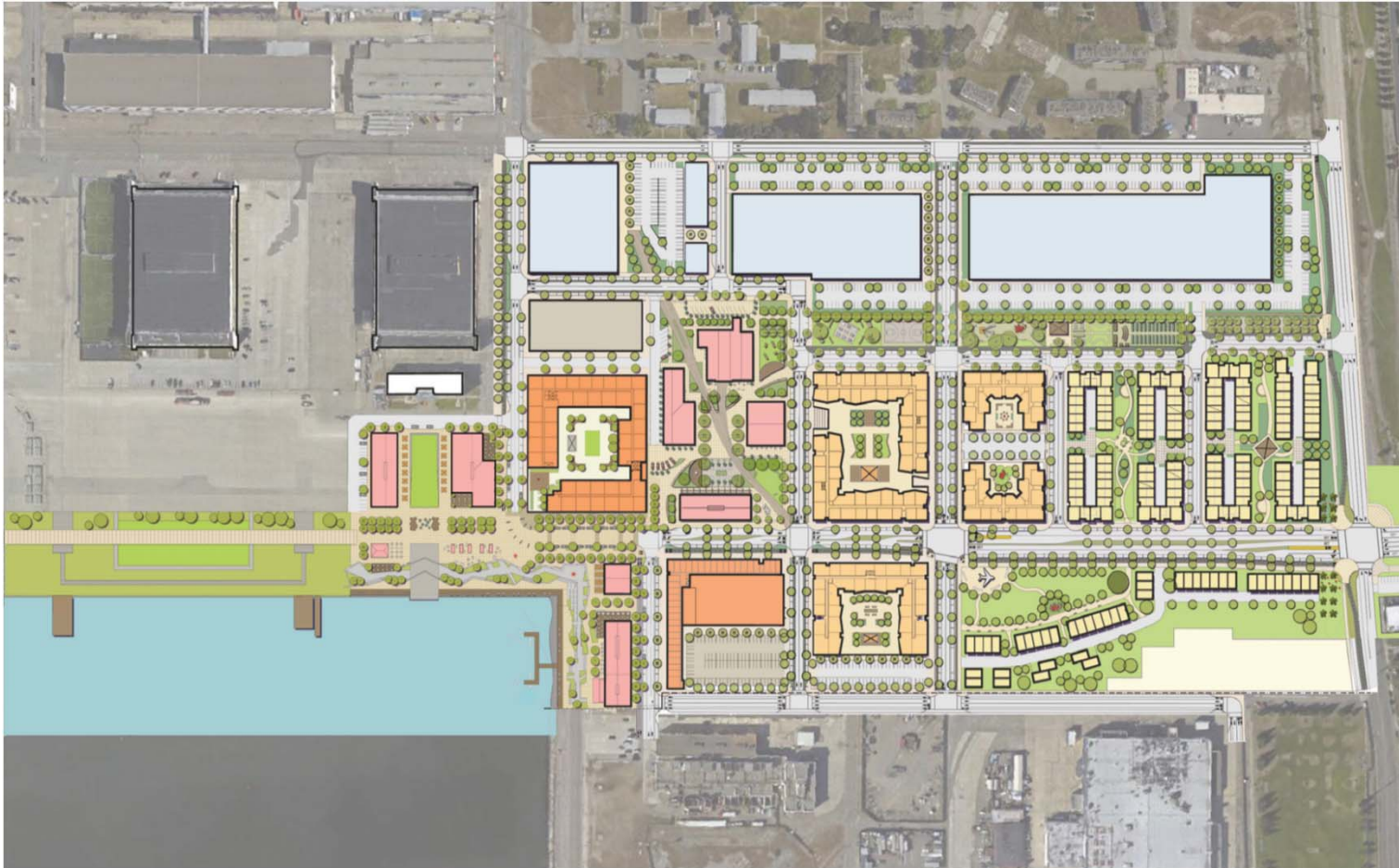


Site A Summary

- Site A
 - 68-acre “gateway” parcel
 - Mixed-use
 - 800 housing units (25% BMR)
 - 600,000 SF of commercial
 - 15 acres of parks
 - Consistent with City plans
 - Approved Development Agreement with Alameda Point Partners (APP)
 - Approved Development Plan



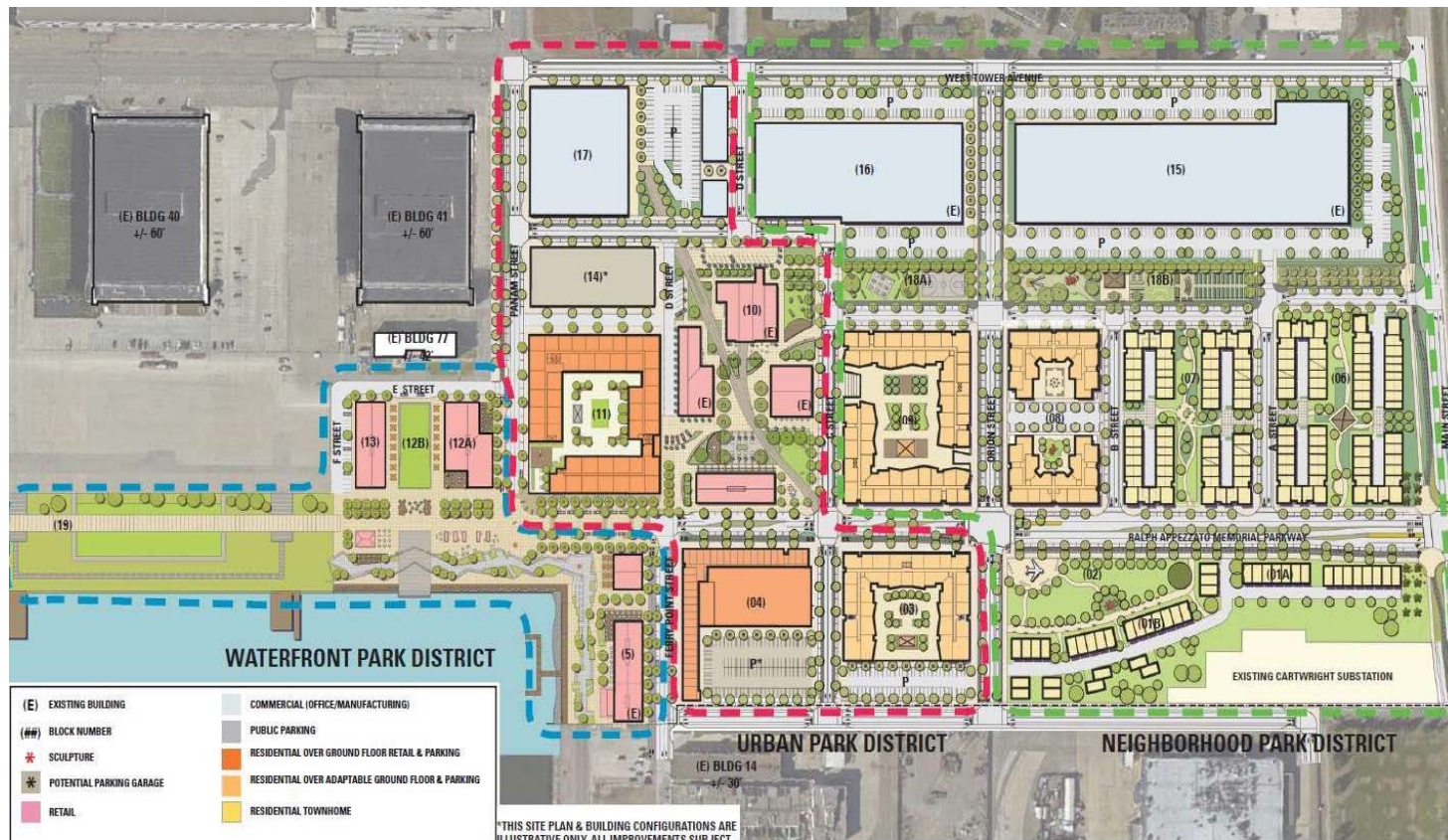
Site A Development Plan



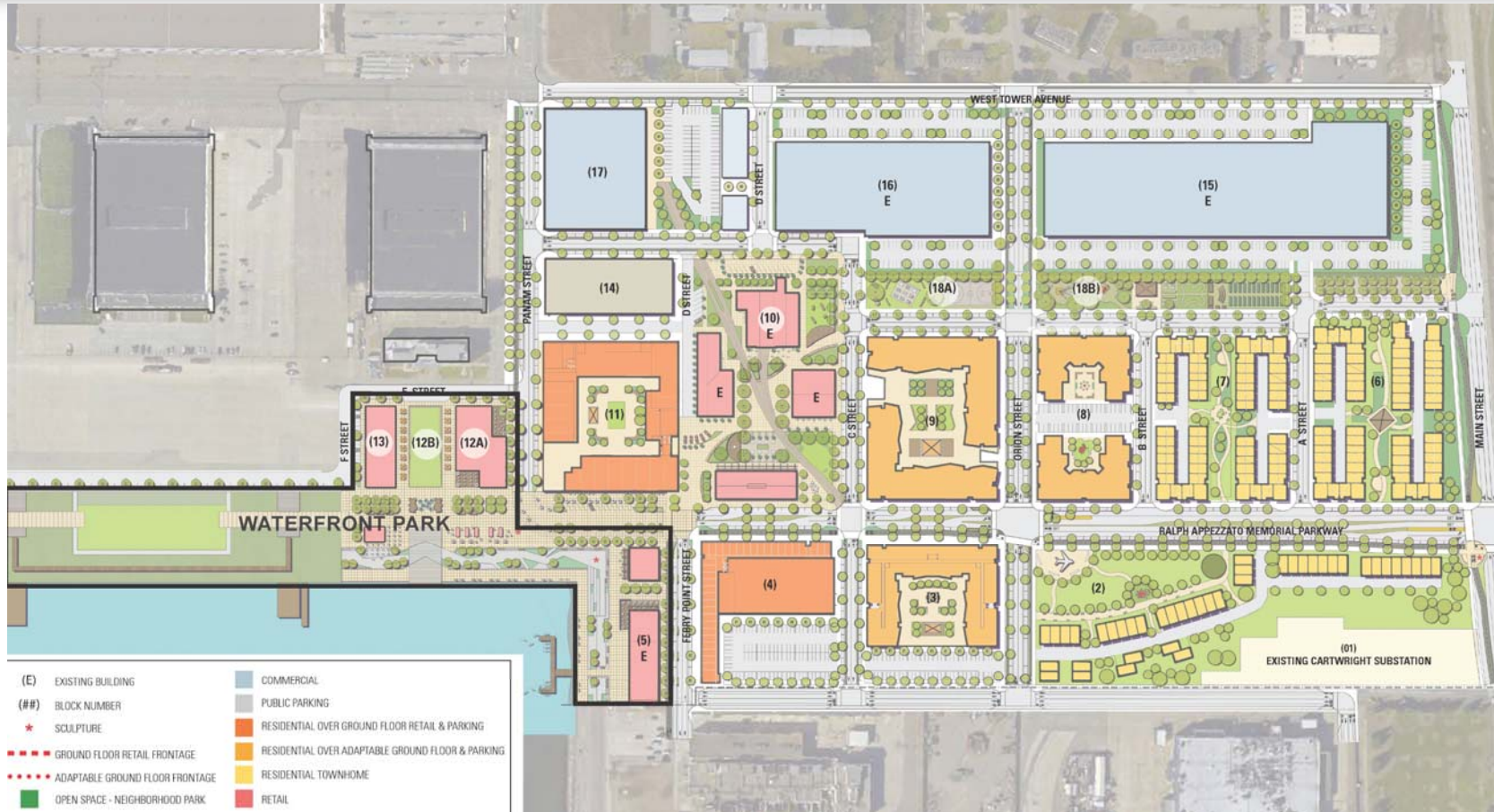
Site A: Phase 1



Site A: Park Districts



Waterfront Park



Approved Waterfront Park Design



CHALK PLAY



MULTIPURPOSE LAWN



FOOD TRUCKS / FLEXIBLE EVENTS



YOGA & GROUP MEDITATION



ART WALK



NATURAL DISCOVERY PLAY



SAILBOAT VIEWING



OUTDOOR MOVIES

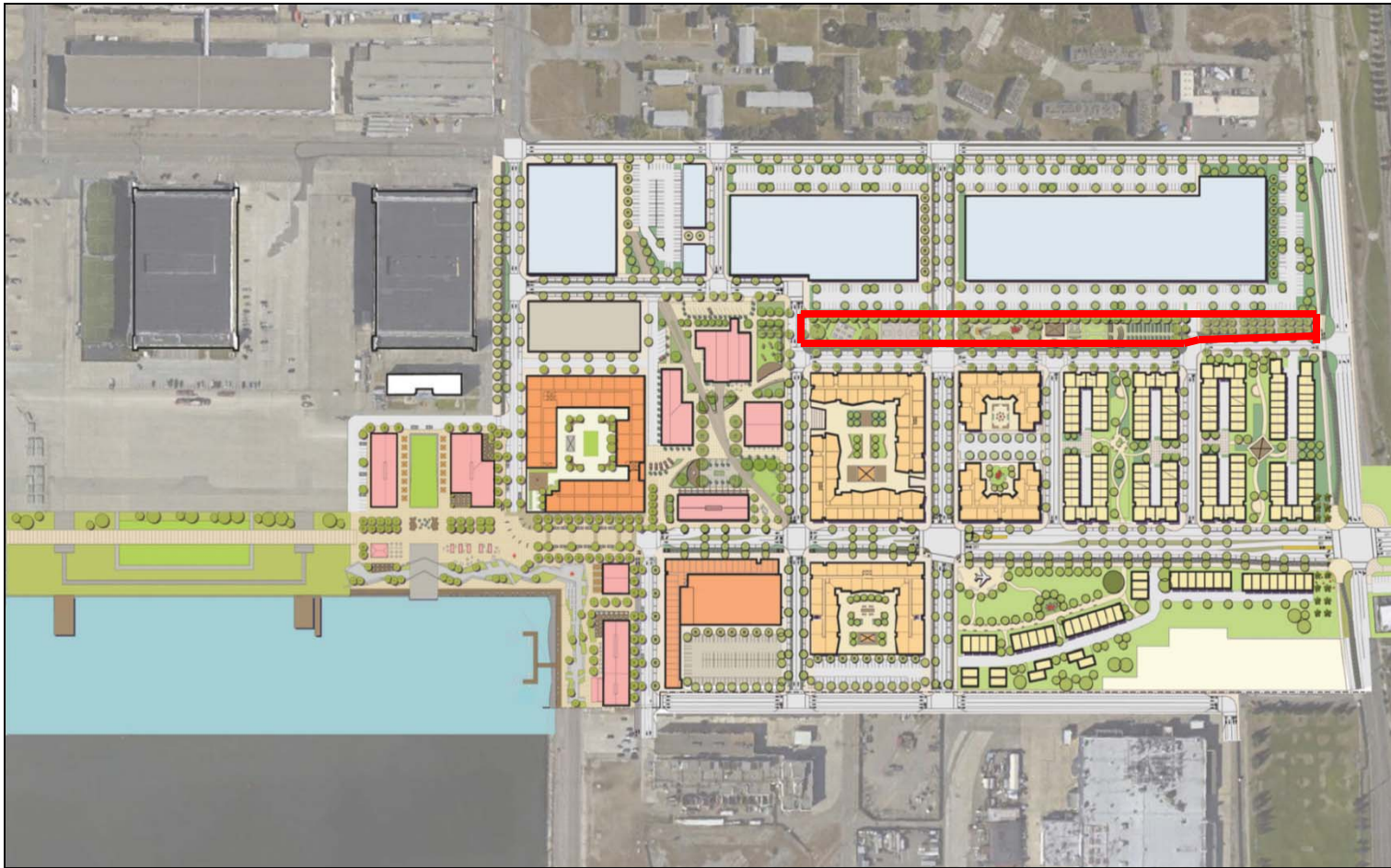


SEASONAL EVENTS



MARKET

Neighborhood Park



Neighborhood Park Conceptual Design

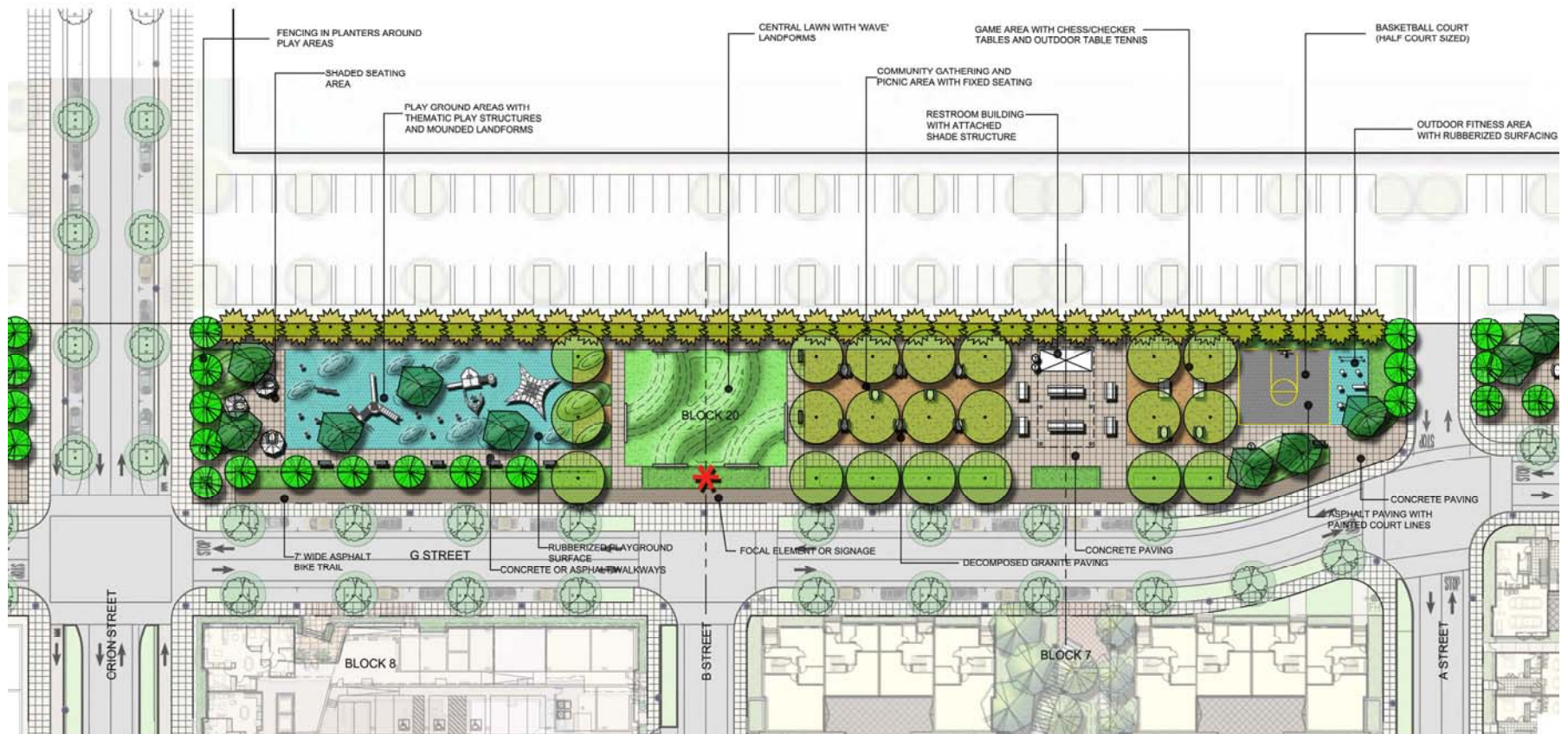


Neighborhood Park Conceptual Design



NEIGHBORHOOD PARK - BLOCK 21

Neighborhood Park Conceptual Design



NEIGHBORHOOD PARK - BLOCK 20

Neighborhood Park Conceptual Design



NEIGHBORHOOD PARK - BLOCK 18

Contact Information

- Jennifer Ott,
Base Reuse and Transportation Planning Director
 - jott@alamedaca.gov
 - <http://alamedaca.gov/alameda-point>



Q & A

