



2014–2015
ANNUAL
REPORT



JIMINY



SANCHEZ



SPECKLES



SANDY





MISSION

To shelter and care for abandoned companion animals, find them new homes, and prevent animal cruelty through education and community programs.

VISION

Friends of the Alameda Animal Shelter (FAAS) aims to partner with the community of Alameda to achieve a truly humane society that promotes responsible pet guardianship and eliminates animal suffering due to abuse, neglect and ignorance.

FAAS Envisions a Time When:

- Our community fully celebrates the human-animal bond;
- There are no homeless pets; and
- Our society as a whole treats animals with compassion and respect.

ORGANIZATIONAL HISTORY

FAAS was founded in 2009 by a small group of volunteers dedicated to raising funds for the medical care of the animals living at the municipal Alameda Animal Shelter.

In 2011, FAAS expanded to help keep the animal shelter open during city budget cuts. On January 1, 2012, after several months of negotiations, FAAS took over management of the shelter from the City of Alameda.

2014–2015 BOARD OF DIRECTORS

NANCY EVANS
Board President
Harbor Bay Realty

ALISON BOTTS
Board Vice President
Placer Title Company

STEVE BUSSE
Board Secretary
Park Centre Animal Hospital

MICHAEL MILLER, DVM
Board Treasurer
Providence Veterinary Hospital
& Clinic

GAIL ARTIKASLAN
Enrolled Agent

JANET DAVIS
JD's Pet Care

DEBBORAH S. KNOWLES
Edward Jones Investments

JOHN L. LIPP
California CASA Association

KEN WERNER
Chevron Corp.

KATHLEEN C. WOULFE
*Alameda Council,
Boy Scouts of America*

STAFF

NANCY S. BAGLIETTO
Executive Director

TINA AEDO
Operations Manager

CINDY SHELBY
Community Outreach Coordinator

CARLA THORNTON
*Marketing, Communications and
Development Coordinator*

LETTER FROM THE PRESIDENT



When I began volunteering at the Alameda Animal Shelter in 2008, the first animal I met was Toto. He had been left in the overnight box with a note. And now the little blind dog with dirty matted coat had been at the shelter for two weeks and no one had shown any interest.

Toto was afraid of leashes, so I sat down on the floor with him and he climbed onto my lap and licked my face. At that moment I decided to adopt him. I still have my sweet Toto. He is one of the reasons I still volunteer. He reminds me every day of how much the animals need our help.

In September 2009, another volunteer named Lizette Weiss and I founded a non-profit group we called Friends of the Alameda Animal Shelter (FAAS). As volunteers, we could see that the shelter needed help with medical care, grooming and training. The community was enthusiastic and we began raising money for the animals.

Things changed suddenly in May 2011 when we learned the city was planning to close the shelter due to budgetary constraints. My first thought was, "No, you're not!" With the help of volunteers and the community, the FAAS board immediately started an emergency Save the Shelter campaign. It was successful, and FAAS took over shelter operations from the City of Alameda in January 2012 and we have not looked back.

Before I became a shelter volunteer, I thought, "I could never do that." Who could bear to see all those pets in cages? Once I started volunteering, I realized the animals are better off at the shelter than out on the streets fending for themselves. At the shelter they got food, medical care, beds to sleep in and, most importantly, love from everyone there.

After I became a volunteer, I could not imagine running the shelter as board president. However, I believe things happen for a reason, and I am so happy that I have been able to play a leadership role. It is wonderful to see how the shelter has grown and improved since FAAS agreed with the city to take over operations.

As I near the end of my term, I want to thank all of the staff and volunteers who have made FAAS successful. If it were not for everyone working together, we would not be able to give the animals the great care they deserve. I look forward to seeing FAAS continue to grow under our new executive director, Nancy Baglietto, who has already accomplished many wonderful things for the shelter since taking over the post in January 2015.

Sincerely,

NANCY EVANS
Board President
Friends of the Alameda Animal Shelter

LETTER FROM THE EXECUTIVE DIRECTOR



Joining Friends of the Alameda Animal Shelter as executive director was one of the best decisions I have ever made. I've always adored animals, and this job has ignited that passion anew.

It is deeply fulfilling to work with so many professionals dedicated to serving the people and pets of Alameda — from the experienced FAAS board of directors to our extraordinary staff to our outstanding shelter volunteers.

Friends of the Alameda Animal Shelter (FAAS) has made many improvements to the shelter since assuming management in 2012. The animals now have top-notch veterinary care, behavior assessments, canine training, and a foster program, among many other benefits. Through careful stewardship and increased fundraising, FAAS has been able to add these programs without ballooning the budget.

FAAS continues to make saving lives a priority. In fiscal year 2014–2015, FAAS boasted a live release rate of 94%, an improvement of 20% over fiscal year 2010–2011. More than 900 pets were returned to their owners, adopted into new homes, or transferred to local rescues.

Another high point for us was the first redesign of our logo in four years. KenCreative of Emeryville gave generously of its time and talent to design our new look, a cheerful depiction of pets peering over a white picket fence. The pit bull and Chihuahua reflect our shelter residents and our mission to find new, loving homes for every animal we receive.

In 2015, our After the Ball fundraiser was the most successful in Alameda animal shelter history, raising more than \$106,000. This gratifying outpouring of community support enabled FAAS to continue to shelter, feed and medically care for the lost and abandoned animals of Alameda.

FAAS is humbled to have the help of so many friends who care just as deeply as we do about the homeless pets of Alameda. We pledge to continue to give each animal in our shelter the best care possible, and every possible chance to find a new forever home.

Sincerely,

NANCY S. BAGLIETTO
Executive Director
Friends of the Alameda Animal Shelter

COMMUNITY PARTNERSHIPS

As FAAS has grown, so have our partnerships, which we value greatly. From individual donors to our local veterinarians to big and small businesses here and outside of Alameda, our supporters are exceptional and very much appreciated. Our sincere thanks go to:

Alameda Mobile Animal Care and **Under One Woof** for grooming;

Alameda Rotary Club and **Kiwanis** for their generous grants;

Alameda See Spot Run, **Holistic Hound** and **Vintq** for hosting Santa Paws;

Alameda veterinarians at **Providence Veterinary Hospital**, **Park Centre Animal Hospital** and **Alameda Pet Hospital** for their generous discounts, especially to **Dr. Marie-Anne Woolley of Providence** for making “house” calls;

Chevron Corp. and **Ken Werner** for monetary and furniture donations;

Humane Society of Alameda (HSA) for donating \$27,000 in kibble, microchips, animal carriers, kennel sanitizers and medical services in 2015 alone;

Kent, Kathy and Shauna Rosenblum for their generous donations of venues, wine sales and After the Ball sponsorships;

Pet Food Express for mobile adoptions, food donations, My Mutt donations and Giving Tree donations;

Petco for grants and mobile adoptions; and last but far from least,

Veterinary Centers of America (VCA) animal hospitals Bay Area Veterinary Services of San Leandro and **San Francisco Vet Services** for their generous discounts.



Top Photo: Cameron and Tony of Alameda Mobile Animal Care trimming a client’s hair.

Bottom Photo: Dr. Woolley of Providence Veterinary Hospital & Clinic with a patient.

PROGRAMS

ANGEL FUND

Some animals arrive at our shelter with serious medical problems. The Angel Fund was established in 2012 to pay the cost of their veterinary care. Since its founding, the Fund has saved the lives of more than 100 pets, all of whom went on to be adopted into new loving homes.

The Angel Fund gives critically ill animals a second chance. Without the ongoing generosity of the community, the Angel Fund could not exist and these special pets could not go on to live happy, healthy lives.

Arthur, a mastiff, came to FAAS with a life-threatening case of mange. He was in such poor condition it was impossible to tell he had once been a beautiful brindle. The Angel Fund paid for the full course of antibiotics and expensive skin treatments he needed to get well.



Poe, a pit bull puppy, was surrendered by his owners because of his partially paralyzed hindquarters. The Angel Fund paid for an MRI and back surgery to remove a growth on his spine.



Red arrived at the shelter blind in one eye, which eventually became painfully infected. Once again, we turned to the Angel Fund for help, and Red quickly bounced back!



PET FOOD PANTRY

In 2013, FAAS staff noticed that an increasing number of low-income families were coming to the shelter requesting food for their pets. To help these Alamedans keep their pets we created a Pet Food Pantry program.

Once a month, working closely with the Alameda Food Bank, we provide free pet food and cat litter to low-income pet owners. The number of Alameda families participating in the program has grown to 167.

SASHA FUND

All dog adopters are entitled to six weeks of free canine training paid for by the Sasha Fund, named for FAAS supporter Shelly Gable's beloved German shepherd, Sasha.

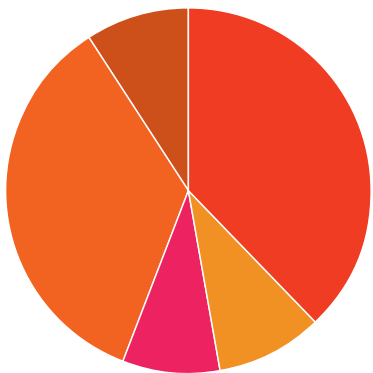
Sasha was a stray Shelly took in. The pup had terrible manners — she chewed shoes, socks and furniture and was even known to knock people down because of her exuberance. In desperation, Shelly enrolled Sasha in a six-week canine training program. It changed Sasha's — and the Gable family's — life. Sasha emerged a different dog who followed commands and walked calmly on a leash. She became a beloved family member.

In 2013, Shelly donated \$10,000 to FAAS to start the Sasha Fund so other new dog owners could enjoy the same benefits of canine training. FAAS contracts with local companies such as BravoPup and training experts such as Barbara Gallardo to provide group and individualized training opportunities free of charge to our adopters.



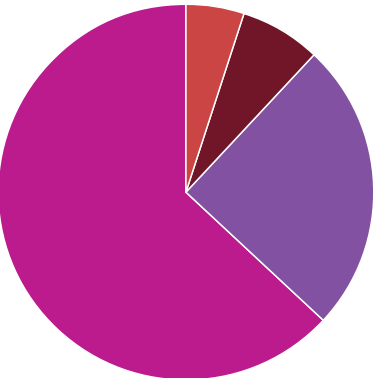
Shelly and her mother, Sherry Gable, have donated more than \$30,000 to the Sasha Fund to date. Thanks to the generosity and vision of the Gable family, more than 70 adopted dogs have been trained so far and none has been returned to the shelter. At a cost of less than \$200 per dog, FAAS believes this method of helping adopted dogs succeed in their new homes is well worth the investment.

FRIENDS OF THE ALAMEDA ANIMAL SHELTER FINANCIALS



REVENUES IN 2014–2015:
\$911,629.87

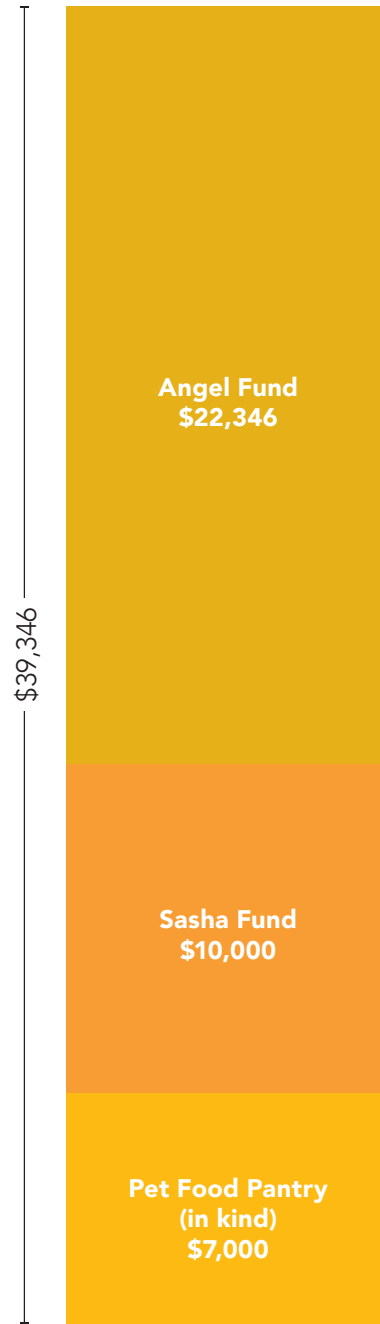
- Individual and business contributions: \$344,954.60 (38.00%)
- Contributed services and property: \$86,024.26 (9.40%)
- Grants: \$81,262.48 (8.80%)
- Government contracts: \$318,664.40 (34.90%)
- Fees and miscellaneous revenue: \$80,724.13 (8.90%)



EXPENDITURES IN 2014–2015:
\$907,753.13

- Fundraising: \$42,628.87 (5.00%)
- Operating and administrative: \$63,298.24 (7.00%)
- Shelter expenses: \$229,761.71 (25.00%)
- Other (salaries, insurance, professional services): \$572,064.31 (63.00%)

FUNDRAISING SUPPORT FOR
PROGRAMS IN 2014–2015:
\$39,346



Income Statement at Fiscal Year End June 30, 2015 and 2014

REVENUE	2014–2015	2013–2014
INDIVIDUAL AND BUSINESS CONTRIBUTIONS		
Events	\$121,366.50	\$117,762.36
Special Funds	\$32,356.55	\$15,938.71
Appeals	\$62,124.81	\$46,303.14
Wine Sale Donations	\$3,108.75	\$2,352.00
Other	\$126,007.99	\$107,948.55
Total individual and business contributions	\$344,954.60	\$290,304.76
INVESTMENT RETURN		
Interest income	\$3,226.70	\$1,324.29
Unrealized gain/(loss) on investments	\$39.43	\$2,384.00
Total investment return	\$3,266.13	\$3,708.29
IN-KIND DONATIONS		
Total contributed services and property	\$86,024.26	\$82,232.33
FEES		
Pet licenses	\$32,220.00	\$33,803.20
Adoptions	\$28,730.00	\$25,453.50
Redemptions and boarding	\$4,375.00	\$7,191.37
Miscellaneous fees	\$7,536.00	\$6,687.00
Total fees	\$72,861.00	\$73,135.07
GRANTS		
Maddie’s Fund	\$32,000.00	\$27,000.00
Miscellaneous grants	\$49,262.48	\$30,717.88
Total grants	\$81,262.48	\$57,717.88
GOVERNMENT CONTRACTS		
City of Alameda	\$318,664.40	\$307,200.00
Total government contracts	\$318,664.40	\$307,200.00
MISCELLANEOUS REVENUE		
Merchandise sales	\$4,597.00	\$5,573.84
Total miscellaneous revenue	\$4,597.00	\$5,573.84
TOTAL REVENUE	\$911,629.87	\$819,872.17

FRIENDS OF THE ALAMEDA ANIMAL SHELTER FINANCIALS (CONTINUED)

Income Statement at Fiscal Year End June 30, 2015 and 2014 (CONTINUED)

EXPENSE	2014–2015	2013–2014
Payroll expenses (salaries, taxes, healthcare, Workers Compensation)	\$496,984.70	\$401,192.90
Shelter expenses	\$229,761.71	\$157,956.03
Building occupancy	\$31,627.79	\$74,744.48
Insurance	\$12,166.26	\$11,776.55
Professional services	\$30,572.62	\$14,995.81
Operating and administrative	\$63,298.24	\$52,765.07
Fundraising	\$42,628.87	\$45,204.46
Community outreach	\$712.94	\$528.08
TOTAL EXPENSE	\$907,753.13	\$759,163.38



Statement of Financial Position at Fiscal Year End June 30, 2015 and 2014

ASSETS	2014–2015	2013–2014
<i>Current Assets</i>		
CASH AND CASH EQUIVALENTS		
Checking accounts	\$182,764.00	\$117,839.00
Certificates of deposit	\$198,573.00	\$30,160.00
Total cash and cash equivalents	\$381,337.00	\$147,999.00
INVESTMENTS		
Edward Jones	\$111,998.00	\$102,546.00
Total investments	\$111,998.00	\$102,546.00
RECEIVABLES		
Rent, current portion	\$31,864.00	\$31,864.00
Rent, long-term portion	\$383,422.00	\$415,286.00
Total receivables	\$415,286.00	\$447,150.00
TOTAL CURRENT ASSETS	\$908,621.00	\$697,695.00
FIXED ASSETS		
Inventory	\$1,537.00	\$21.00
Office equipment and furniture	\$87,396.00	\$82,764.00
TOTAL FIXED ASSETS	\$88,933.00	\$82,785.00
OTHER ASSETS		
Prepaid expenses	\$11,276.00	\$8,893.41
TOTAL OTHER ASSETS	\$11,276.00	\$8,893.41
TOTAL ASSETS	\$1,008,830.00	\$789,373.41
LIABILITIES AND NET ASSETS	2014–2015	2013–2014
LIABILITIES		
Accounts payable	\$18,252.00	\$20,713.00
Accrued payroll	\$38,016.00	\$14,005.00
Total liabilities	\$56,268.00	\$34,718.00
NET ASSETS		
Unrestricted	\$389,325.00	\$331,837.00
Temporarily restricted	\$419,179.00	\$450,357.00
Permanently restricted	\$102,547.00	\$100,005.00
Total net assets	\$911,051.00	\$882,199.00
TOTAL LIABILITIES AND NET ASSETS	\$967,319.00	\$916,917.00

Our volunteers are doctors, homemakers, lawyers, painters, electricians, media professionals, artists, writers, architects. They come from as far away as San Leandro and some have volunteered for a decade or longer.

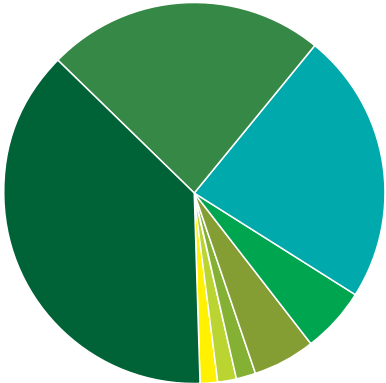
FAAS could not operate successfully without its 150 active volunteers.

During the 2014–2015 fiscal year, volunteers donated more than 23,000 hours at a value of \$207,000 (based on \$9 an hour).

FAAS depends on volunteers to help walk dogs, clean kennels, socialize cats and rabbits, foster underage and sick pets, perform office work, and plan and staff events. Without volunteers, FAAS could not provide our animal guests with the exercise, nursing, love and attention they so need to stay happy and healthy as they await their new families.

TOTAL VOLUNTEER HOURS DONATED:
23,004

- Fostering: (38.00%)
- Canine: (23.50%)
- Feline: (23.00%)
- Shelter upkeep: (5.50%)
- Events: (5.50%)
- Mobile outreach: (1.50%)
- Admin: (1.50%)
- Rabbits: (1.50%)



VOLUNTEERS

FOSTER PARENTS

Foster families are very special volunteers who open their homes to the shelter's most fragile animals. They care for pets recovering from injuries or surgery, fearful animals, and those who simply need a break from the noise of the kennel.

In the spring, fosters also serve as surrogate parents, bottle feeding underage puppies and kittens around the clock if necessary. Often, dozens of kittens are in foster care at any one time.

Caring for so many little ones cannot be done by staff alone. By generously sharing their homes, fosters provide a critical bridge to an animal's successful adoption and surely save the lives of hundreds of FAAS pets a year.

ON-SITE VOLUNTEERS

CATS

FAAS relies on more than 50 on-site cat and kitten volunteers. They cuddle frightened newcomers, play with and supervise kitty interactions, and keep staff informed of behavioral and medical changes. Volunteers also respond to visitor questions and inquiries, clean cages, perform laundry duties and sweep floors at the end of the day.

Barbara Coapman shied away from volunteering for years "because I was afraid I would want to take all the cats home," she says. "But when the shelter was in danger of closing in 2011, I had to get involved." Five years later, she has no regrets thanks to FAAS's great track record of finding homes for its animals. She's adopted just one cat despite personally caring for about 500!

Ingrid Russell-White, who has been a feline volunteer for a year, once cared for the San Francisco Zoo's big cats, bears and otters before becoming a zoo administrator. She recently adopted her second cat from FAAS, a black kitten named Abby.

Barbara and Ingrid agree that helping shy cats gain confidence and find homes is their biggest reward. But their most memorable guest? Max, a big black muscular tomcat who waited nine months for his forever family. Despite his intimidating battle scars, Max was "very sweet" and eventually was adopted by a retiree looking for some animal companionship.

" I WAS AFRAID I WOULD WANT TO TAKE ALL THE CATS HOME. BUT WHEN THE SHELTER WAS IN DANGER OF CLOSING, I HAD TO GET INVOLVED. —Barbara Coapman, Feline Volunteer



Mike Baglietto and Nancy Baglietto



Barbara Coapman and Ingrid Russell-White



Paula Pirack

ON-SITE VOLUNTEERS (CONTINUED)



“IT HELPS ME AS MUCH AS THE DOGS.”
—Jim Gotelli, Dog Volunteer



“I’M ENCHANTED BY THE PERSONALITIES & SPIRITS OF RABBITS.”
—Paul Gumpel, Small Animal Volunteer

DOGS

FAAS has 85 active canine volunteers, who put in untold hours keeping shelter guests happy and cared for. They feed, play with, and walk shelter dogs, pitching in with cleaning when needed. No matter what the weather, they make sure the dogs get out at least once a day.

Jim Gotelli has been volunteering at Bay Area animal shelters for 25 years, the last four at FAAS. He can be found at FAAS almost every day, walking dogs of all sizes and temperaments, from Chihuahuas to the biggest, most rambunctious canines.

Jim always has a smile on his face and a kind word for his charges, who keep him on his toes. “I love getting out every day, and it helps me as much as them.”

SMALL ANIMALS

A small, expert group of volunteers help care for the rabbits, guinea pigs and other small creatures FAAS welcomes as an open-intake shelter.

Paul Gumpel has extensive experience with his favorite small pet.

“I’m enchanted by their personalities, their spirits,” he says of rabbits, which he has owned for more than 15 years. He feeds, cleans cages and takes rabbits for “hops” in the enclosed patio. Before FAAS he volunteered with several rabbit rescue groups.

During the recession, when pet releases and surrenders were at a high, he helped capture a colony of 14 rabbits and, for a time, fostered a dozen bunnies in his apartment. “People don’t realize that escaped pet rabbits, although they do not become feral, will multiply into large colonies the same as cats,” he notes. “This was back when people didn’t spay rabbits.”

HAPPILY EVER AFTER: ADOPTION STORIES

DOGS AND CATS

Healthy puppies and kittens and “purebreds” that find themselves in the shelter tend to be adopted quickly. But we have many heartwarming stories of “imperfect” pets finding forever love, too.



TATE

The Alameda Point “Pack.” In July, FAAS received a call that a small pack of Chihuahua-dachshund mixes (“Chiweenies”) were running loose on Alameda Point. They were in good health but terrified of people. FAAS asked city animal control to bring them in so behavior coordinator Ariana Keedy could get to work helping them. One by one (and occasionally all together), Ariana fostered Kate, Kit, Tot, Tate and Pip until each was ready for adoption.



CHACHA

Nine-year-old ChaCha, a Chihuahua mix, had a large abdominal growth that had never been diagnosed. As part of FAAS’s routine care, ChaCha was taken to the vet where an ultrasound revealed a herniated uterus. Thanks to the Angel Fund, ChaCha was able to undergo surgery to fix her serious condition. She was adopted on New Year’s Eve 2015 by an 89-year-old woman who had lost her 16-year-old dog that morning. It was a clear love match!



CHESTER

Chester was 12 years old and had heart problems, but got a new lease on life when a loving family adopted him so that he could join them on their beautiful 25-foot boat!



SASHA & SHIRLEY

Sasha was a typical FAAS dog: a nondescript mix. And at 10, she wasn’t a puppy anymore. It seemed she would have to wait a long time for the right family to see her inner beauty. Then Shirley saw Sasha’s online profile and drove all the way from Oregon to adopt her. Sasha now lives on a 50-acre property with Shirley’s other pets, including llamas and horses.

SPECIAL GUESTS

As an open-intake shelter FAAS welcomes any and all homeless pets, including rabbits, guinea pigs, rats, turtles, pigeons, parrots and chickens. One of FAAS’s most unusual guests in 2015 was a goat.

FAAS is not equipped to accommodate barnyard animals, marine life and certain domesticated exotics for long periods of time. However, FAAS can provide a temporary home to just about any visitor until it can be transferred to the appropriate rescue group.



FUNDRAISING

FAAS annually raises private funds to support and improve upon our services and facilities.



WIGGLE WAGGLE WALK

Our annual dog walkathon is an afternoon of summer fun featuring games, raffles, a dog costume contest and a 1-mile stroll. Wiggle Waggle Walk raises money through registrations, sponsorships and exhibitors.



The 2015 Walk was a well-attended event at Crab Cove that grossed \$15,000.

AFTER THE BALL



After the Ball, held each fall, is the shelter’s biggest fundraiser. Guests are treated to live music, gourmet hors d’oeuvres, cocktails and live auctions, and surprise entertainment.

Last year’s gala, hosted at Rock Wall Wine Company at Alameda Point, was FAAS’s most successful event ever, attracting more than 475 guests and 125 local businesses.

The successful 2015 gala raised more than \$106,000.

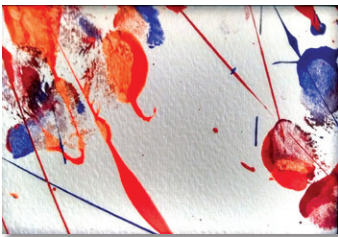


FUNDRAISING (CONTINUED)

THIRD PARTIES

FAAS is fortunate to have many friends in the community who held third-party fundraising events for the shelter. These events included:

Pets Unleashed: Redux Studios & Gallery, run by St. Vincent de Paul of Alameda County, hosts this gallery show and sale of paw paintings made by FAAS dogs and cats.



An original paw painting by a FAAS animal.

Dine With Your Dog: High Street Station donated a portion of the proceeds from this special series of dinners open to the public.

Tip-A-Cop: Alameda’s finest help serve customers at a different Alameda dining establishment each year, with tips donated to FAAS.

Succulent Sale: The Alameda Support Foundation offered the public a private garden tour and sold custom succulent arrangements and black-and-white prints.

Jewelry Sale: Creative art director Vali Ebert opens her home each holiday season to sell new and vintage jewelry and other small fine gift items for the shelter.

NEW LOGO

In 2015 we were fortunate to gain the generous support of **KenCreative**, an Emeryville marketing and design company that donated more than \$50,000 in services, including a new four-color logo for the shelter.



The Petco Foundation, The Rotary Club, and **an anonymous donor** from the community joined forces to pay for a van wraparound featuring the new logo. This let us upgrade our shelter transportation from a plain white van to one that serves as an attractive mobile advertisement.

KenCreative continues to give generously of its time and expertise by designing letterhead, event logos, invitations, programs and other much-needed materials for the shelter.



OUR STAFF



FAAS staff from left: Geneva Aquino, Cindy Shelby, Ariana Keedy, Carla Thornton, Levi Lopez, Tina Aedo, Lou Schroeder, Brynna Bergen-Harper, Nancy Baglietto, Edward Gutierrez, Chris O’Connell





Friends of the
Alameda Animal Shelter

1590 Fortmann Way
Alameda, CA 94501

510.337.8565

alamedaanimalshelter.org

