

# ALAMEDA POINT - NEIGHBORHOOD PARK DESIGN REVIEW 10.24.16



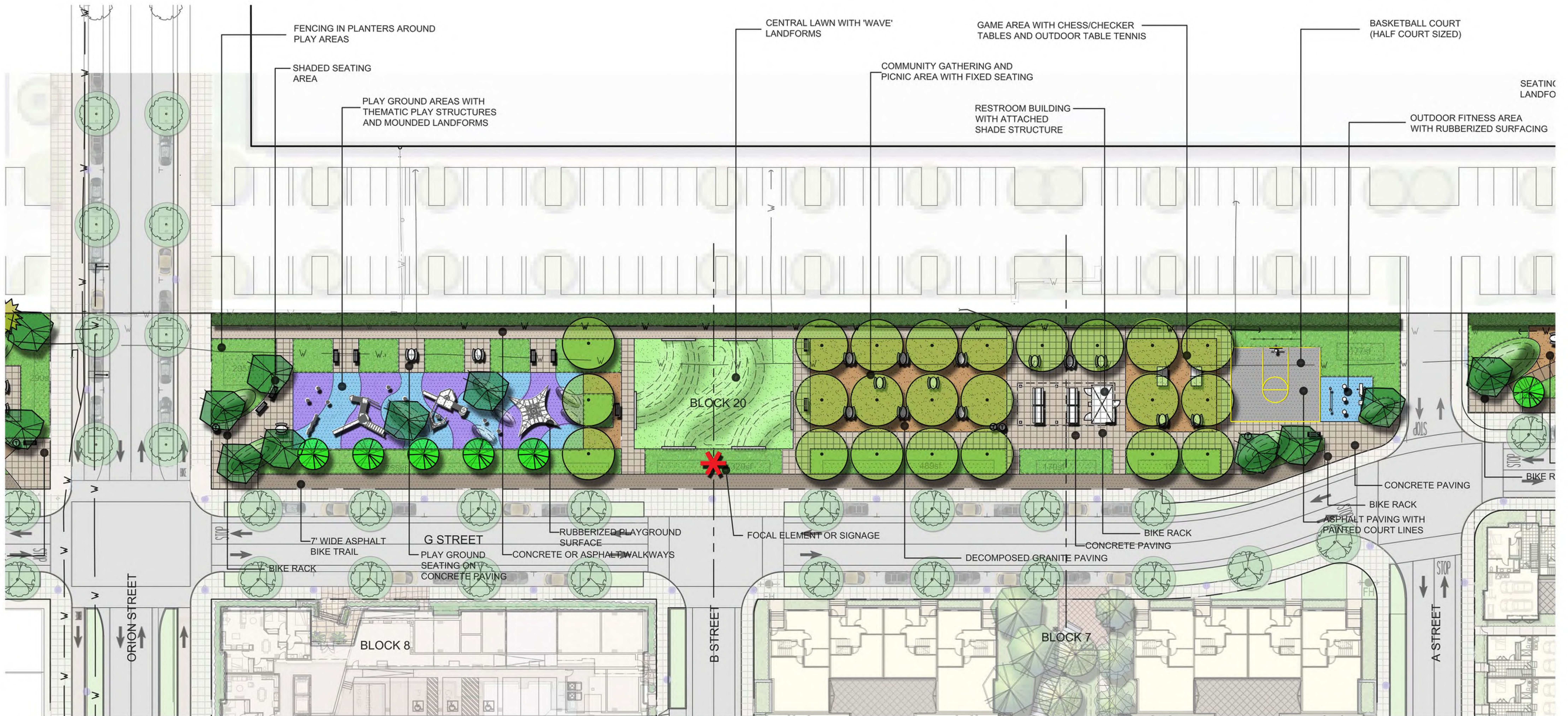






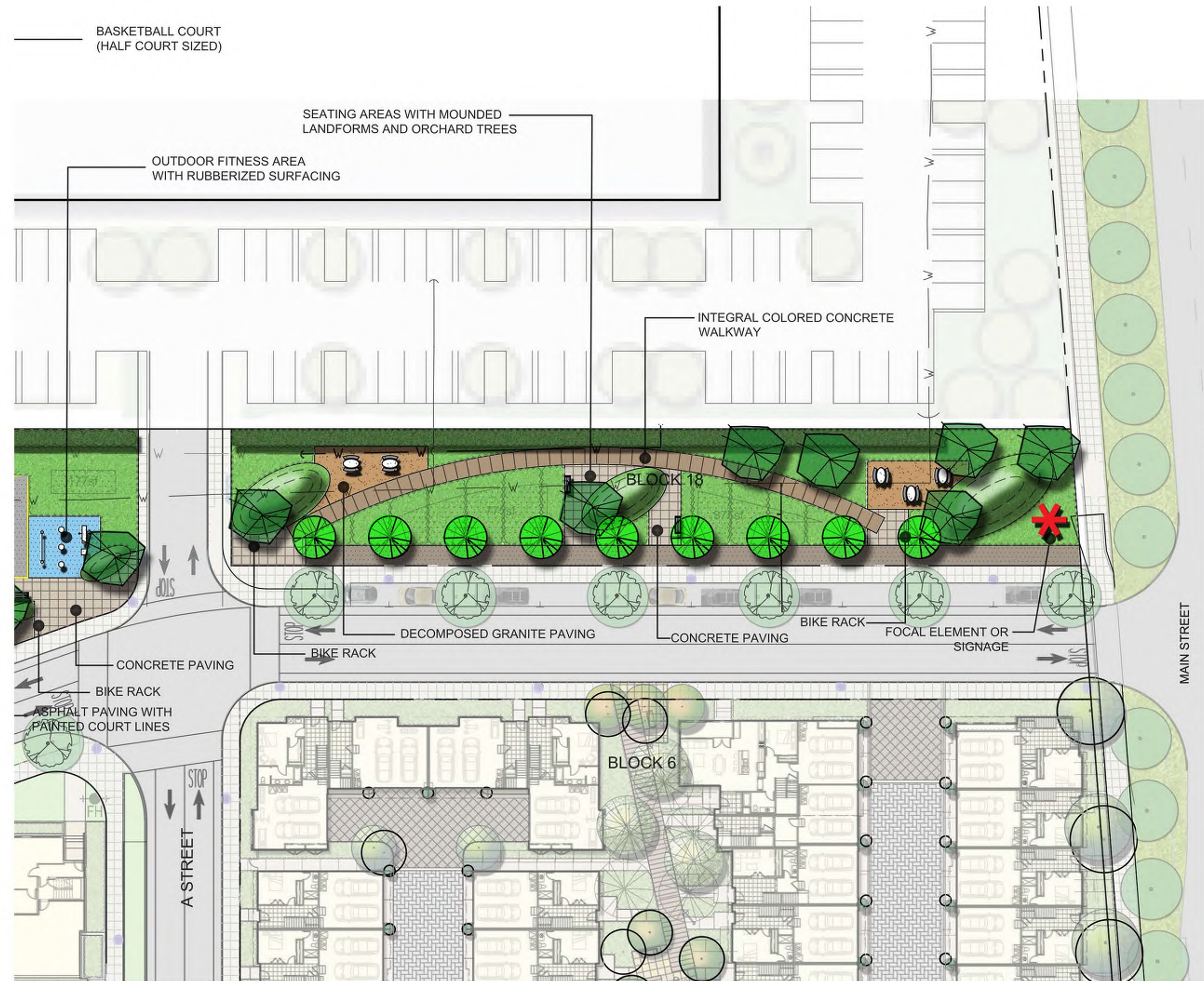
NEIGHBORHOOD PARK - BLOCK 21





NEIGHBORHOOD PARK - BLOCK 20





NEIGHBORHOOD PARK - BLOCK 18



COLOR AND FINISH SCHEDULE

PEDESTRIAN CONCRETE PAVING  
Type 1 Natural gray match city sidewalk  
Type 2 Color with medium Kahlua sandblast

DECOMPOSED GRANITE  
Sunset gold from Lyngso

PLAYGROUND SURFACE  
Poured in place "PlayBound" by Surface America  
Contact: Ross Recreation 855.892.3240  
Color and pattern TBD

CONCRETE WALLS  
Color to be kahlua

SKATE STOPPERS ON WALL  
D135-8 FR chamfer  
from SKATE STOPPERS

PLAYGROUND AND FITNESS EQUIPMENT  
To be Determined

TRASH AND RECYCLING RECEPTACLES:  
Outdoor Creations: #504 and #504R

DRINKING FOUNTAIN  
Most Dependable Fountains: #10150 SMSS

RESTROOM  
Public Restroom Company:  
Model SP-132 Sports  
Park Series

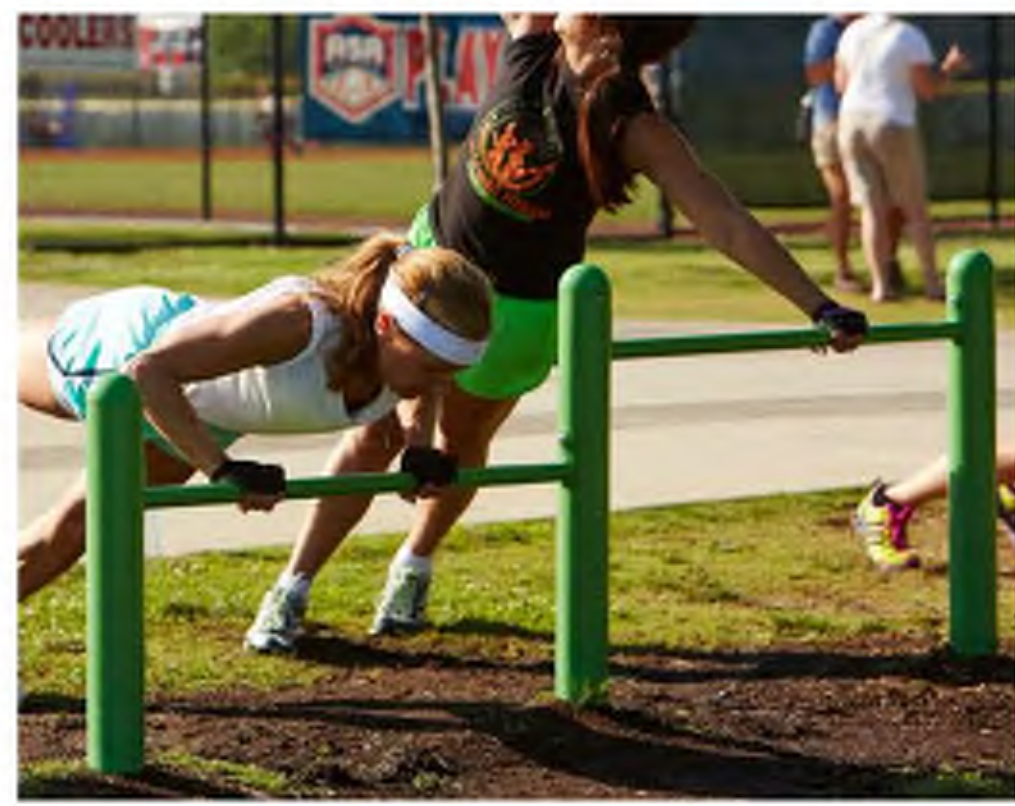
PICNIC TABLE  
DuMor #475  
Metalwork to be Charcoal  
Wood to be IPE

BENCH  
Backed-DuMor #472  
Backless-DuMor #473  
Metalwork to be Charcoal  
Wood to be IPE

BBQ  
Outdoor Creations: Model #300A

BIKE RACK  
DuMor #292  
Powder Coated, Aluminum Color

BASKETBALL GOAL  
BSN Sports: SKU# 987344XX  
Bison Ultimate Outdoor Glass  
System w/ Bison Steel Chain  
NO-Tie Net



OUTDOOR FITNESS EQUIPMENT



THEMATIC AND ADVENTURE PLAY FEATURES



PLAYGROUND SURFACING AND MOUNDS



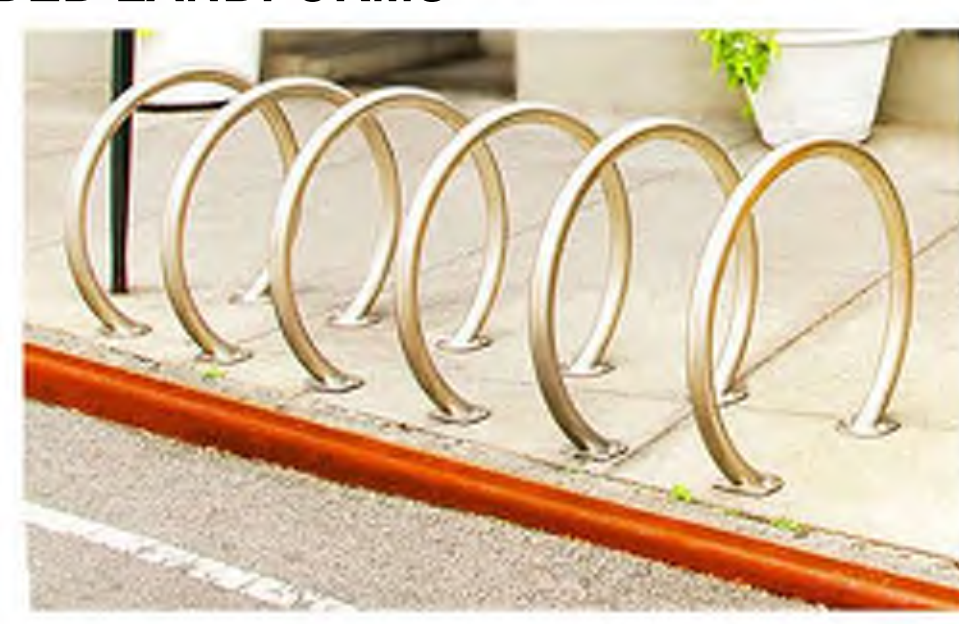
DECOMPOSED GRANITE SEATING AREA



BBQ GRILLS



WASTE RECEPTACLES



BIKE RACK



PICNIC TABLES



PARK BENCHES



PEDESTRIAN CONCRETE PAVING



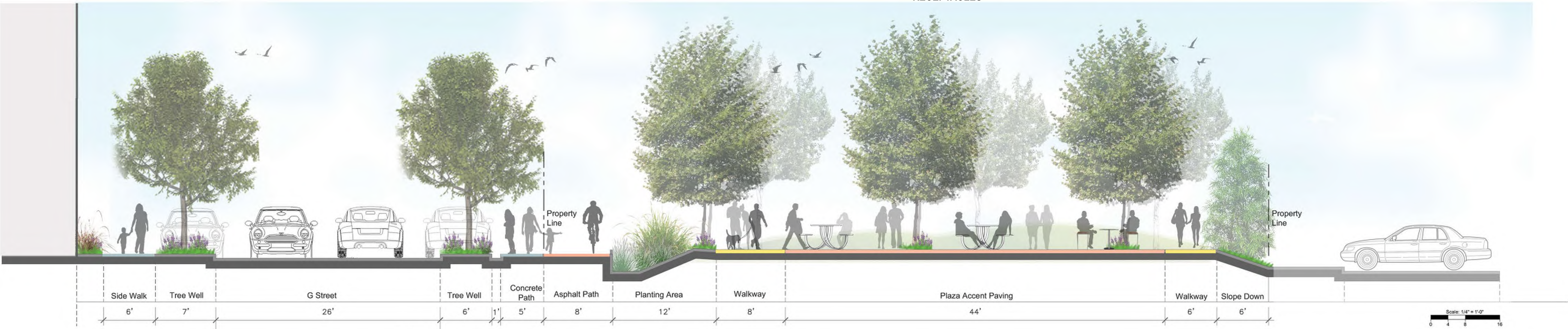
SHADE STRUCTURE, Precast Columns with Aluminum Trellis



MOUNDED LANDFORMS



STORMWATER TREATMENT AREAS WITH DROUGHT TOLERANT PLANTING



ALAMEDA POINT - NEIGHBORHOOD PARK | ALAMEDA, CA

NEIGHBORHOOD PARK DESIGN REVIEW MATERIALS PALLETTE, IMAGERY AND SECTION



PLANT PALETTE

TREES					
KEY	SIZE	BOTANICAL NAME	COMMON NAME	WUCOLS	
ARB MAR	*	Arbutus 'Marina'	Strawberry Tree	Low	
COR FIC	*	Corymbia ficifolia	Red Flowering Gum	Low	
LAG MUS		Lagerstoemia 'Muskogee'	Crape Myrtle	Low	
LAG NAT	*	Lagerstroemia 'Natchez'	Crape Myrtle	Low	
LAG TUS	*	Lagerstroemia 'Tuscarora'	Crape Myrtle	Low	
LYO FLO	*	Lyonothamnus floribundus	Catalina Ironwood	Low	
PIS CHI	*	Pistacia chinensis	Pistache	Low	
POD MAC	*	Podocarpus gracillior	Yew Pine	Medium	
QUE AGR	*	Quercus agrifolia	Coast Live Oak	Very Low	
QUE SHU	*	Quercus shumardii	Shumard Red Oak	Medium	
QUE PAL		Quercus palustris	Pin Oak	Medium	
* All trees to be 24" box standards unless otherwise noted					
SHRUBS					
KEY	SIZE	BOTANICAL NAME	COMMON NAME	SPACING	WUCOLS
ASD	5 gal	Asparagus densiflorus 'Myers'	Foxtail Fern	36"	Medium
AZB	5 gal	Anigozanthos 'Bush Gold'	Yellow Kangaroo Paw	24"	Low
CHT	5 gal	Chondropetalum tectorum	Cape Rush	18"	Low
CXT	1 gal	Carex tumulicola	Berkeley Sedge	18"	Low
DIB	5 gal	Dietes bicolor	Fortnight Lily	36"	Low
MCR	5 Gal	Muhlenbergia capillaris 'Regal Mist'	Regal Mist Pink Muhly Grass	30"	Low
PES	1 gal	Pennisetum spathiolatum	Slender Veldt Grass	30"	Low
PHB	5 Gal	Phormium t. 'Bronze Baby'	Bronze Baby Flax	48"	Low
RHI	5 gal	Rhaphiolepis indica 'Clara'	Indian Hawthorn	36"	Low
SAC	5 gal	Salvia clevelandii	Clevand Sage	30"	Low
SIB	1 Gal	Sisyrinchium bellum	Blue-Eyed Grass	18"	Low
GROUNDCOVERS					
KEY	SIZE	BOTANICAL NAME	COMMON NAME	SPACING	WUCOLS
ARP	1 gal	Arctostaphylos 'Pacific Mist'	Manzanita	18"	Low
ERG	1 Gal	Erigeron glaucus 'Sea Breeze'	Seaside Daisy	12"	Low
LAN	1 gal	Lantana x 'New Dawn'	Spreading Lantana	24"	Low
MYP	1 gal	Myoporum parvifolium 'Putah Creek'	Myoporum	48"	Low
LAWN	Sod	Blue Rye 50/50 Mix	Available from Delta Bluegrass Company		

Trees



Arbutus 'Marina'



Corymbia ficifolia



Lagerstoemia 'Muskogee'



Lagerstoemia 'Natchez'



Lagerstoemia 'Tuscarora'



Lyonothamnus floribundus



Pistacia chinensis



Podocarpus gracillior



Quercus agrifolia



Quercus shumardii

Shrubs



Asparagus densiflorus 'Myers'



Anigozanthos 'Bush Gold'



Chondropetalum tectorum



Carex tumulicola



Dietes bicolor



Muhlenbergia capillaris 'Regal Mist'



Pennisetum spathiolatum



Phormium t. 'Bronze Baby'



Rhaphiolepis indica 'Clara'



Salvia clevelandii



Sisyrinchium bellum

Groundcovers / Lawn



Arctostaphylos 'Pacific Mist'



Erigeron glaucus 'Sea Breeze'



Lantana 'New Dawn'



Myoporum parvifolium 'Putah Creek'



Blue ryegrass 50/50 mix